



# TOWN OF ELIZABETH

COMMUNITY DEVELOPMENT DEPARTMENT

**To:** Historic Advisory Board  
**From:** Alex Cramer, Planner/Project Manager  
**Date:** May 5, 2025  
**Subject:** Discussion and Possible Action on Stampede Booth & Promotional Items

## Summary

The Main Street Board of Directors have reserved a booth at the Stampede this year. The MSBOD have opened the option for the HAB to use the booth as well. Attached is a signup sheet if anyone on HAB is interested.

If there is interest among the group, then staff recommend discussing promotional materials for the booth. This can be in the form of the brochures that were adapted from the 2024 Walk and Talk. There is also an opportunity to have information boards about the oral history program. Staff would like the HAB to discuss what other ideas they have, keeping in mind the Stampede booth is reserved for June 6-8, 2025.

## Staff Recommendation

Staff recommends the HAB consider signing up for timeslots on the signup sheet for the Stampede weekend and decide on which promotional materials would be most effective for this event.

## Budget Considerations

There is approximately \$5,000 in the Community Outreach and Education budget and \$7,500 in the Preservation Initiatives budget that can fund promotional materials depending on the type.

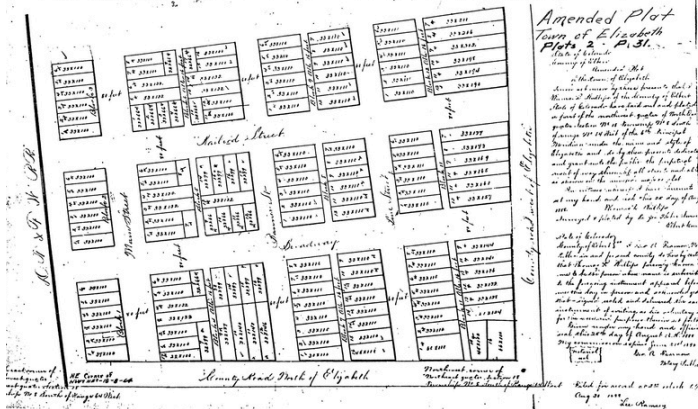
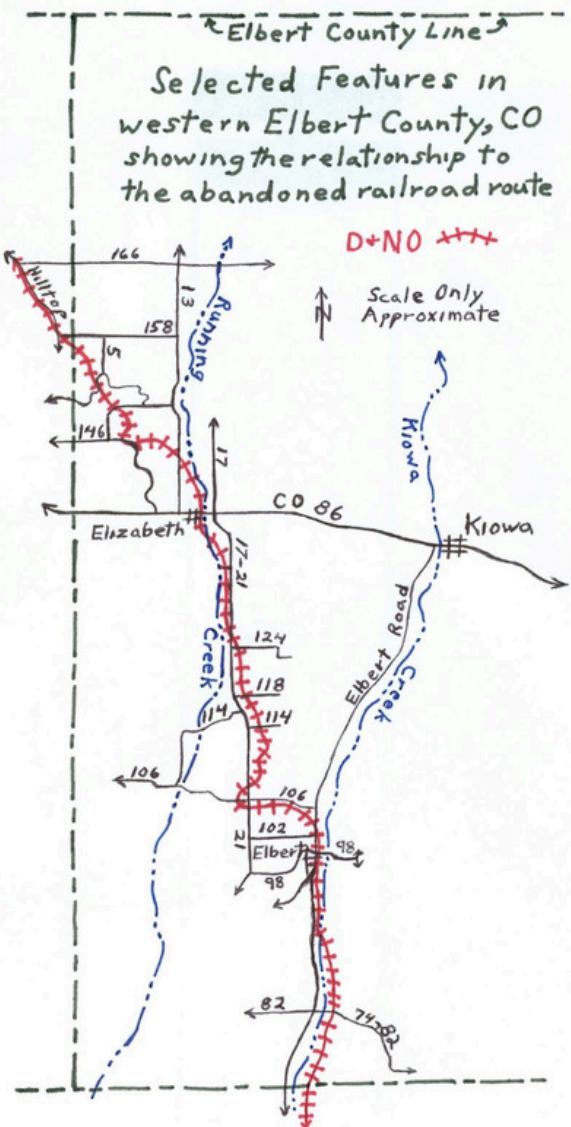
## Attachments

1. Stampede Booth Sign-Up Sheet
2. A Guide to Elizabeth's Roots Brochure

## Elizabeth Stampede Booth Sign-Up Sheet

Friday 6/6	Name(s)	Saturday 6/7	Name(s)	Sunday 6/8	Name(s)
4:00pm-7:00pm	Brandon	10:30am-1:00pm		10:30am-1:30pm	Carrie
	Linda				
7:00pm-10:00pm	Carrie	1:00pm-4:00pm	Carrie	1:30pm-5:00pm	
			Jeff Lehman		
		4:00pm-7:00pm	Brandon		
		7:00pm-10:00pm			

# TRACKS THROUGH TIME: ELIZABETH'S RAILROAD LEGACY



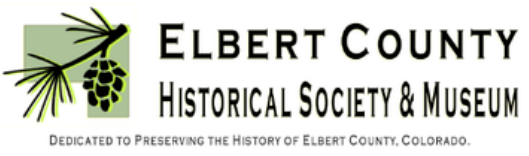
Discover More of Elizabeth's History



Scan the QR code or visit [www.historicelizabethco.org](http://www.historicelizabethco.org) to learn more about Elizabeth's history and ongoing preservation projects.

This map shows the route of the Denver & New Orleans Railroad through Elizabeth and the surrounding area, illustrating the town's strategic position along this important railway line. (Map from Jim Jones, 'Colorado & Southern Railway's D&NO Route')

A Special Thank You To:



American Legion Post 82



Town of Elizabeth Historic Advisory Board



Commercial Hotel, Former Site to the West of 377 E Kiowa Avenue

Built by the railroad company, the Commercial Hotel was a vital part of Elizabeth's early development. It housed Jack McKimmie's barber shop and provided boarding facilities, serving as a center of activity for travelers and residents alike. The hotel stood as a symbol of the town's railroad-driven growth until it was tragically lost to fire in February 1970.



Odd Fellows Hall, 122 S Main Street

The Odd Fellows Hall, built in the early 1900s, housed the International Order of Odd Fellows and its women's auxiliary, the Rebekahs. This fraternal organization often attracted railroad workers, serving as a community hub. Over the years, the building has been home to various businesses, including a saloon, bakery, grocery, and tack shop. It even served as the town hall for a period, reflecting its importance to Elizabeth's social and civic life during the railroad era and beyond.



Railroad Section House, 338 S Main Street

The Section House stands as one of the best-preserved examples of railroad housing in Elizabeth. Originally facing the tracks, this building housed the workers responsible for maintaining a section of the railroad. Its distinctive color scheme - dark red with olive-green trim - reflects the palette of the Colorado & Southern Railroad, though it originally sported the buff and brown colors of the Denver & New Orleans line. The Section House not only represents the critical role of railroad maintenance in Elizabeth's history but also offers a glimpse into the daily lives of the workers who kept the trains running smoothly through our town.



Former Farmer's State Bank, 377 E Kiowa Avenue

Established in 1902 as Farmer's State Bank, this building represents Elizabeth's railroad-era growth. It later merged with First National Bank, adapting to changing times. Over the years, it has housed various businesses, including a church, real estate office, and electronics store, showcasing the town's evolving economy. Today, it stands as a reminder of Elizabeth's financial history and architectural heritage.



The Little Blue Building, 144 S Main Street

This distinctive blue building at 144 S Main Street, moved from Elbert around 1901, reflects the economic opportunities that drew businesses to Elizabeth during the railroad era. It has housed various enterprises, including a dentist's office, Nature's Way store, and a confectionery. Today, it stands as a quaint reminder of Elizabeth's evolving commercial landscape in the early 1900s.



Aerial View of Elizabeth, circa 1900s

View looking west along the tracks, showing the Depot (center) and Section House (left). The railroad tracks once ran where Running Creek Park Trail is today.



Russell Gates Mercantile, 349 E Kiowa Ave

The Russell Gates Mercantile, established in the 1890s, was the commercial heart of Elizabeth during the railroad boom. As the town's largest employer until 1922, Russell Gates owned seven different stores in the area, selling general merchandise and building materials. A railroad spur to the large barn across the alley facilitated easy transport of goods. In 1901, it housed the first telephone lines in Kiowa, later connecting Elizabeth to Elbert and Eastonville stores. After 1943, the Hundley family repurposed the space for various businesses, including a meat locker plant and apartments.



Elizabeth Railroad Depot, Former Site Near Running Creek Park

The Elizabeth Railroad Depot, established in 1882 with the arrival of the Denver & New Orleans Railroad, was the heart of the town's transportation hub. Located near 490 E Elm Street, it served as Elizabeth's vital link to the wider world. The depot handled daily mail services between Elizabeth and Kiowa, and was a crucial shipping point for local farmers' products, especially milk and cream destined for Denver markets. Though the original structure is no longer standing, the depot's legacy lives on in Elizabeth's layout and the economic growth it spurred, playing a key role in shaping the town we know today.

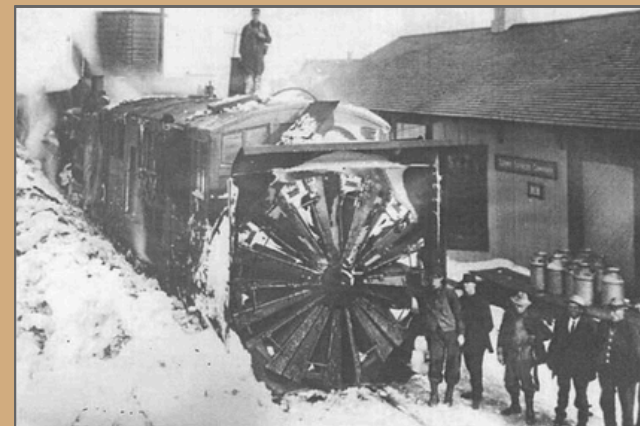


Photo credit: Jim Jones, 'Colorado & Southern Railway's D&NO Route

This image shows C&S rotary snowplow No. 99201, which cleared snow from the mainline between Cheyenne, Wyoming, Denver, and Falcon, Colorado. The snowplow and its crew are seen here during a brief stop in Elizabeth to take on water. (Information from Jim Jones, 'Colorado & Southern Railway's D&NO Route')