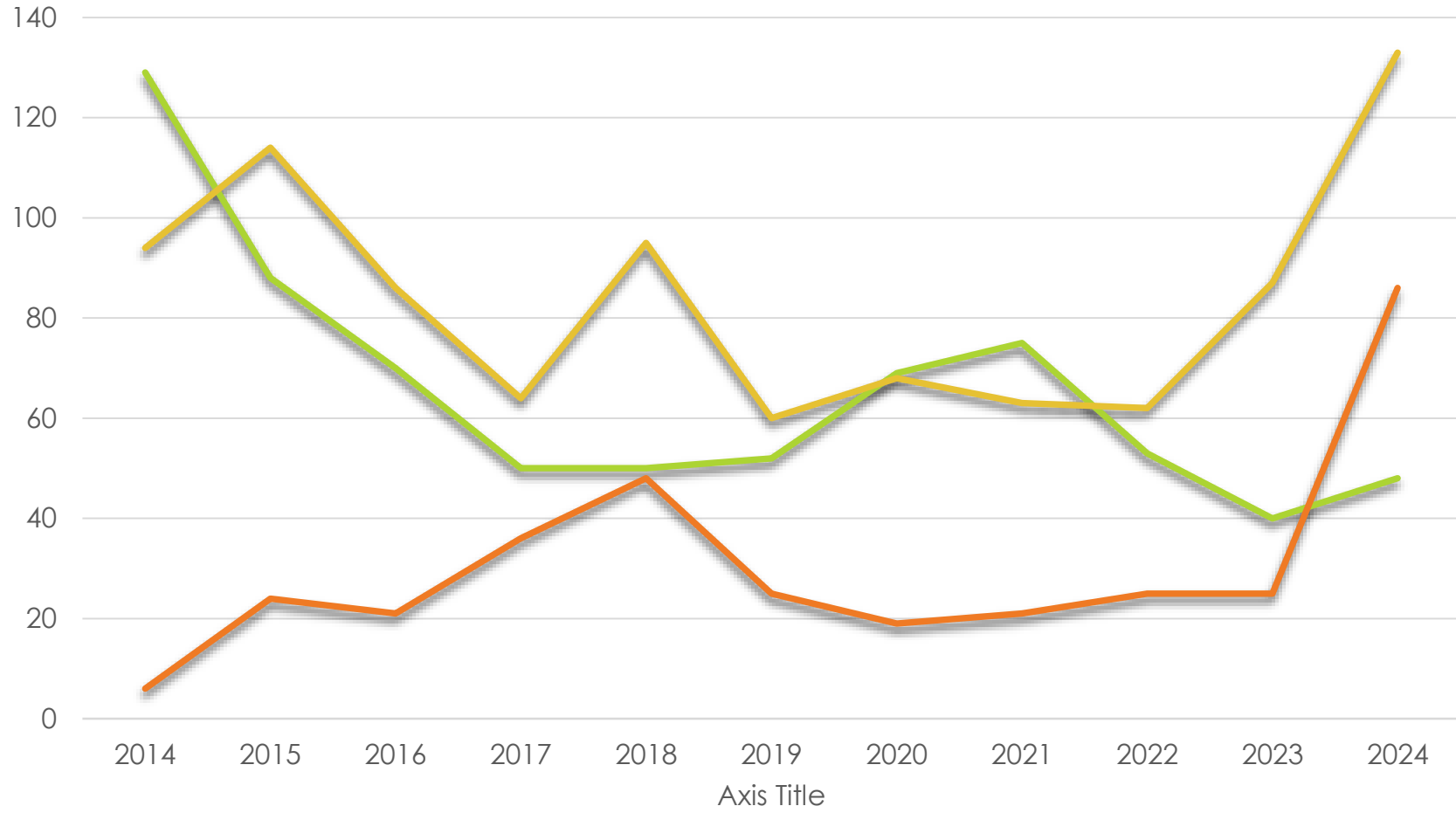


Elizabeth Deer Management Plan

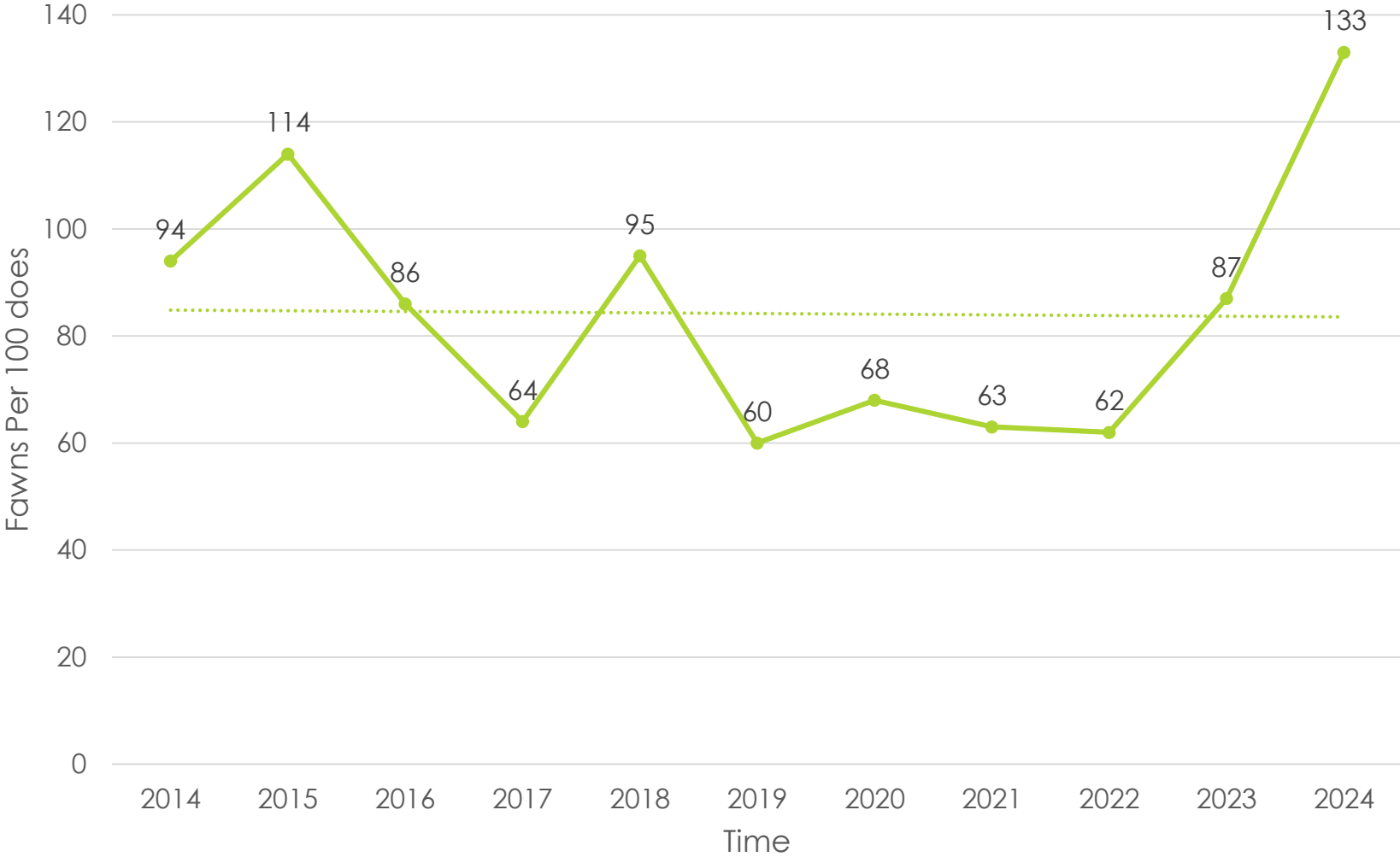


Elizabeth Town Deer Population Dynamics

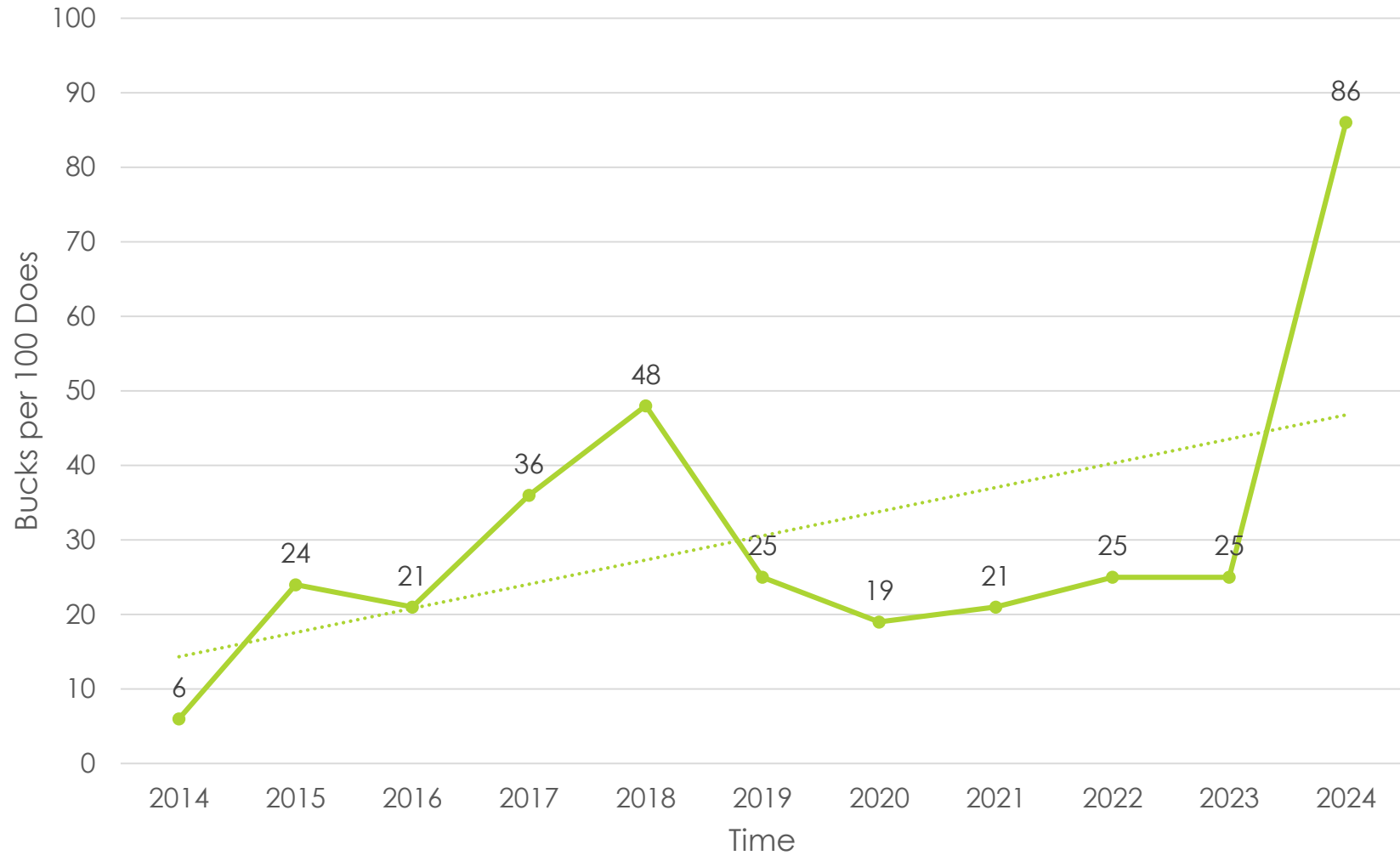


Population Size Fawn Ratio Buck Ratio

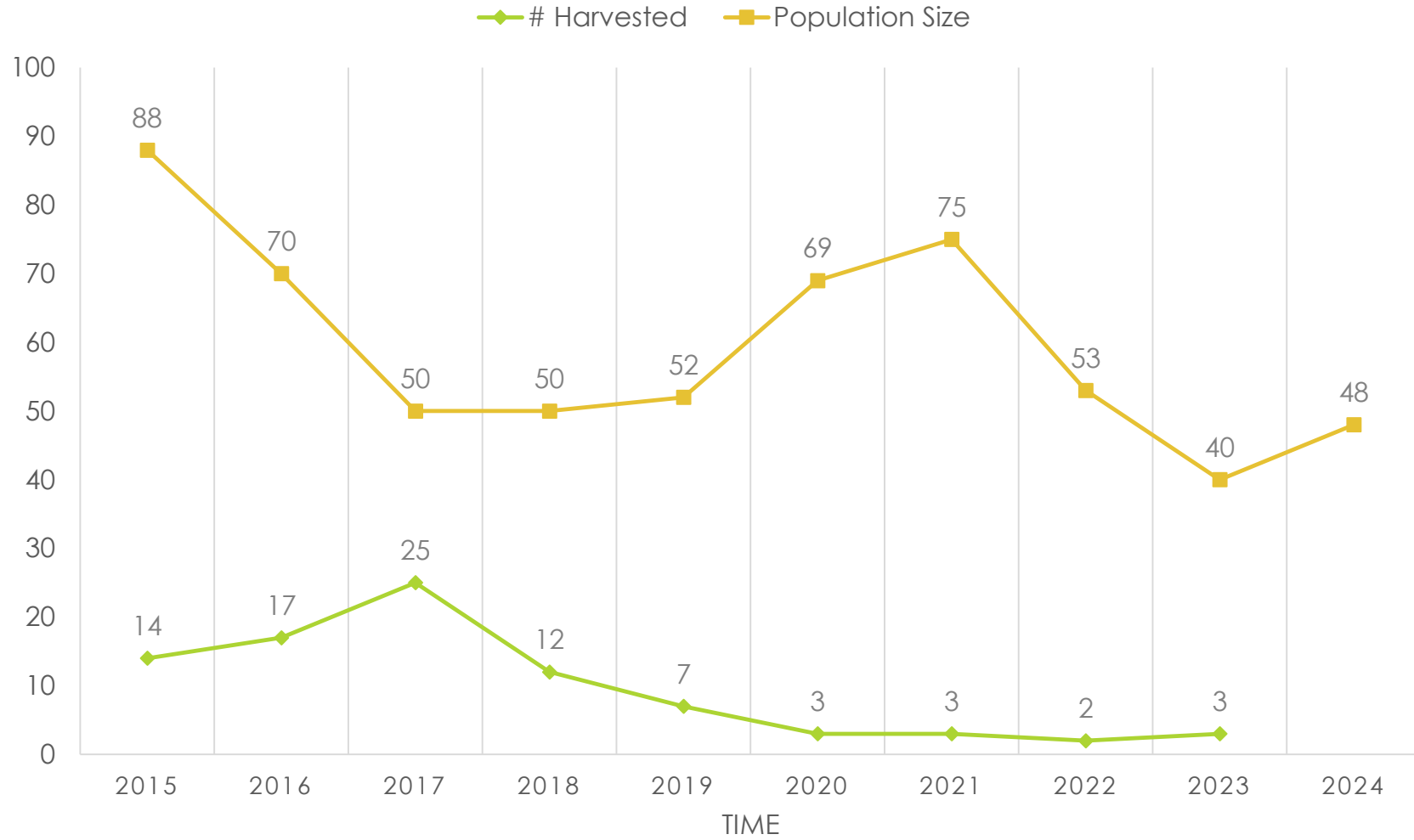
Fawn Recruitment



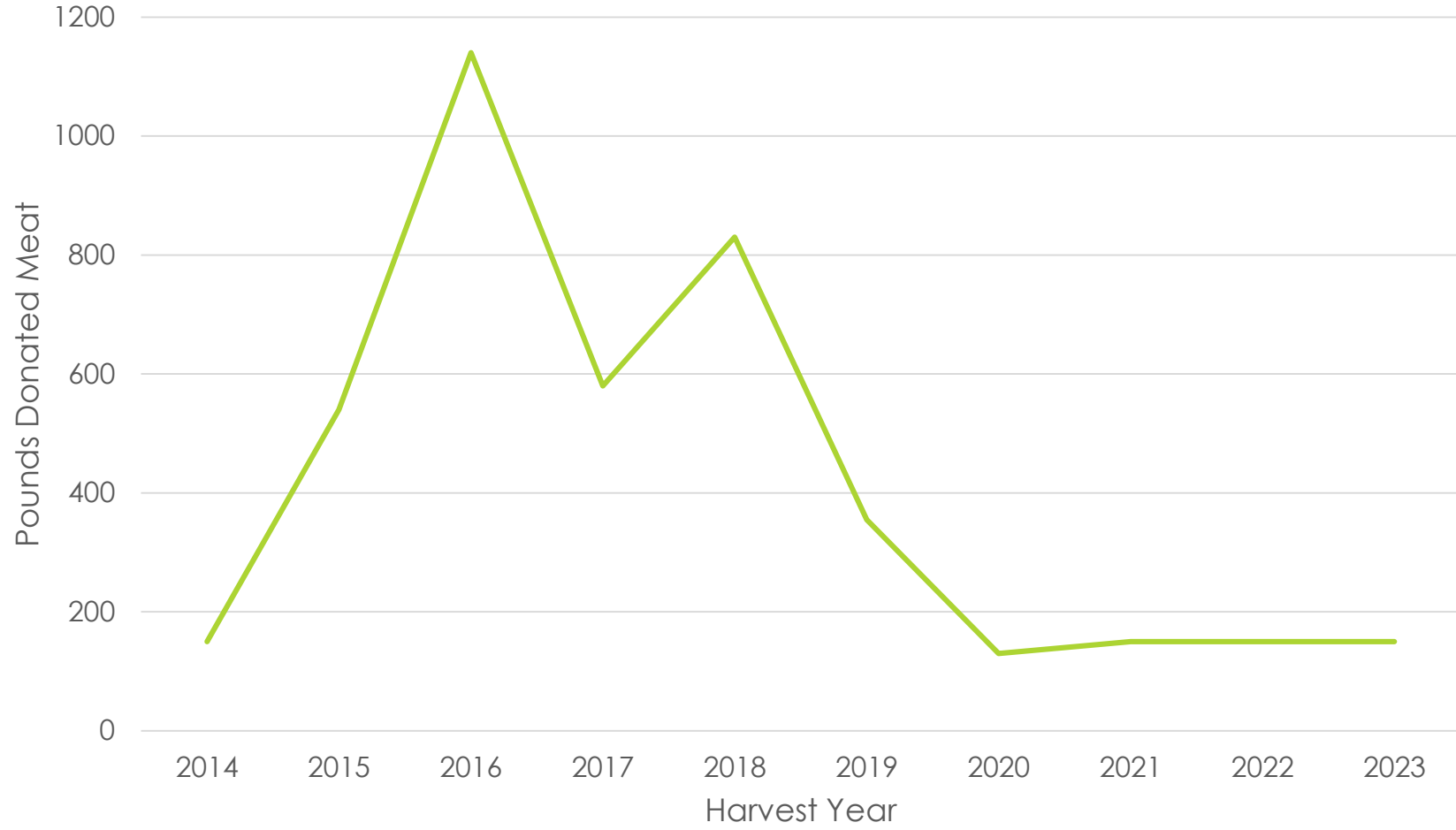
Buck Ratios



HARVEST VS POPULATION RESPONSE



Meat Donated to Community

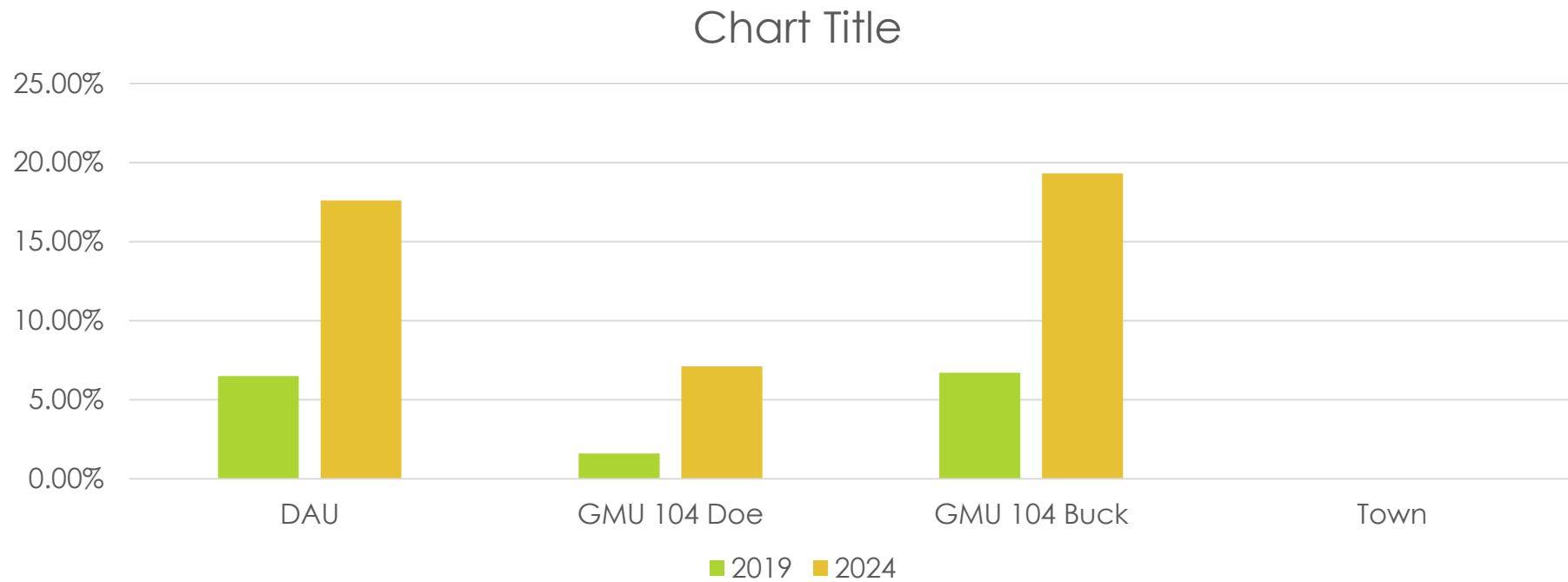


Series 1

Chronic Wasting Disease

- ▶ Mandatory Testing for CWD in 2024
- ▶ 2019 monitoring (goal <5%)
 - ▶ DAU = 6.5%
 - ▶ GMU 104 Doe = 1.4%
 - ▶ GMU 104 Bucks = 6.4%
 - ▶ Town deer 0 of 7 does
- ▶ Future Mgmt.
 - ▶ Deer density reduction
 - ▶ Reduce feeding
 - ▶ Hot spot mgmt.
 - ▶ B/D ratio reduction

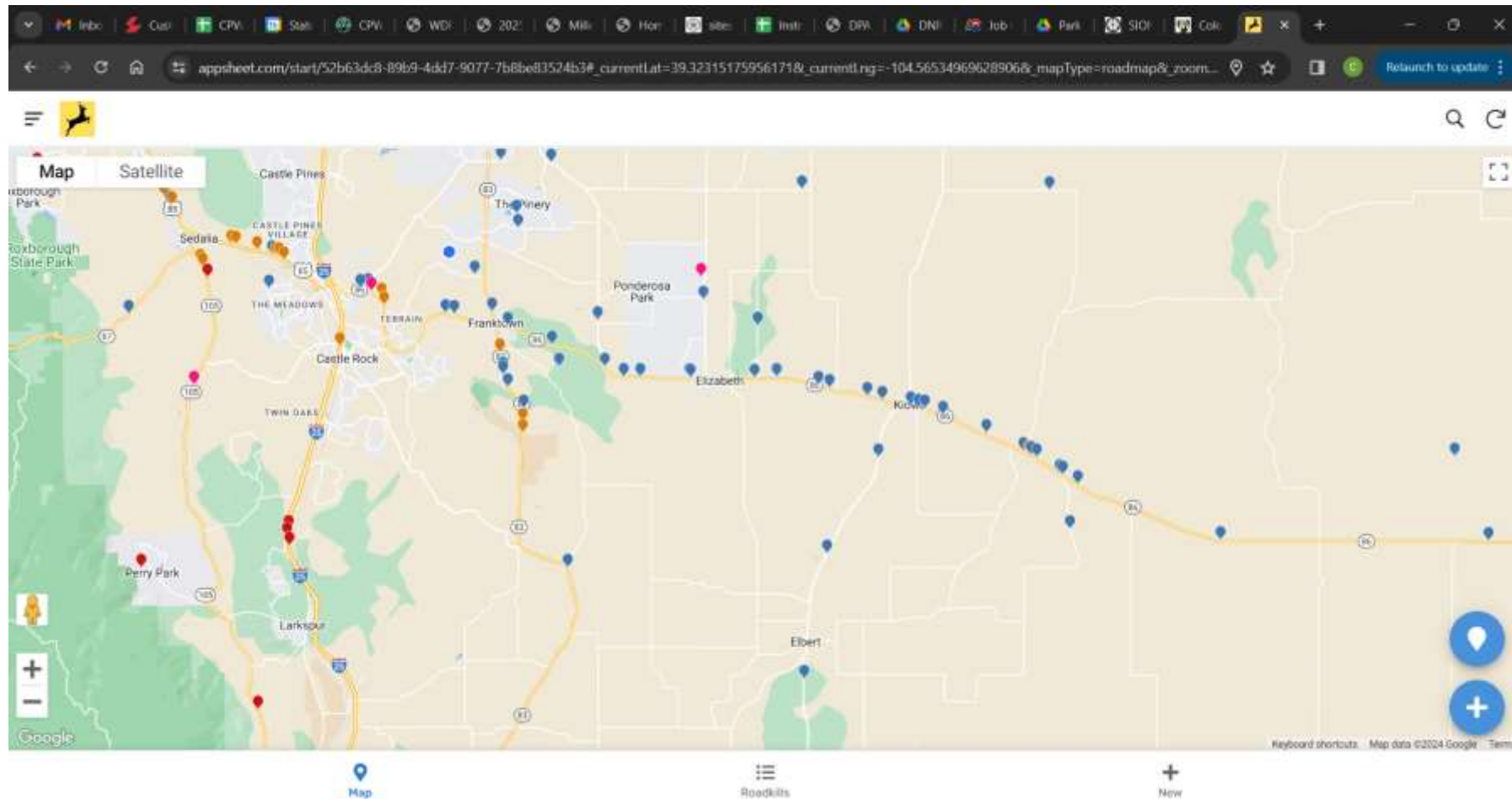
CWD Changes After 5 Years



2024 Challenges / Opportunities

- ▶ Development and growth impacts on deer and deer movement
- ▶ Unlawful deer feeding issues – increase in calls and complaints
- ▶ New participants learning the program
- ▶ CPW Roadkill database
 - ▶ Initiated October 2021
- ▶ 10 Deer on this database from Flintwood Road to Rd 21 along HWY 86

CPW Roadkill App 2023 – 2024 Data



2025 Plan Recommendations

- ▶ Status quo regarding plan elements of harvest timing and locations.
- ▶ Harvest goal for 2025 to 10 doe deer.
- ▶ Vet and recruit 4-6 volunteers to conduct harvest.



Population Estimates

