



ENERGREEN[®] *America*
Professional Machines 

ILF ALPHA  **E** 173HP
EAGLE



ILF SELF-PROPELLED

SELF-PROPELLED
HYDROSTATIC MACHINES

World's strongest manufacturing steel





ILF ALPHA



Brushcutter with Multifunction Boom

Energreen presents the new self-propelled hydrostatic machine ILF Alpha E.

A high-tech level machine that guarantees high performance, safety and working flexibility.

ILF Alpha E can be equipped with a multifunction boom which has various attachments.

STRENGTHS



STRENGTHS



Safety and Comfort

- 90° rotating cabin certified FOPS-ROPS
- High visibility panoramic windshield
- Excellent working ergonomics
- SCD Stability Control Device



Multifunctional

- Sturdy 33 ft telescopic boom
- Several tools available
- Green maintenance, forestry work and winter viability
- Front and rear attachment for tools



Quality

- 10" LCD Display ECI *Energreen Control Interface*
- John Deere 173 HP powerful engine
- EPA Tier 4f emission
- Main parts made with special steel
- Heavy Duty hydrostatic transmissions



Productivity

- Sturdy and flexible telescopic boom
- Bidirectional work
- Operation with multiple implements
- Easy and smart to use
- 360° cabin visibility



360° VISIBILITY

Complete visibility of the working environment

.....
Visibility is an essential element for a correct and safe use of the machine while working and moving. Visibility has always been one of Energreen strengths!

ILF Alpha E has a comfortable and spacious cabin, equipped with a large windshield which allows the operator to have an efficient and total view of the work, keeping a high level of comfort and physical wellness. In terms of safety, the cabin is certified by FOPS-ROPS tests: anti-tipping, against the risk of falling objects, soundproofed, provided with an efficient cooling system, and equipped with all that features necessary to assure the operator a safe and comfortable working environment.

The **90° rotation of the cab** makes the cut of the grass in both directions much easier. The rotating cabin allows the operator to always keep the correct body posture, avoiding stress and backpain or stiff neck, as well as managing the work with great comfort and care.



90° ROTATING CABIN



CABIN
FOPS-ROPS
CERTIFIED

Maximum Safety and Comfort

ILF Alpha E cabin is certified according to the FOPS-ROPS regulation that guarantees the protection against overturning and objects fall.

The cabin is completely isolated and efficiently air-conditioned thanks to a sealing system: soft gasket are settled on fixed and mobile glasses and the cabin is mounted on elastic supports on sustain points.

In this way, this multifunction machine is suited for working in dusty and noisy environments for many hours per day, still keeping a high level of comfort.

The new control system ECI “Energreen Control Interface”

The new 10” colors display (1) together with the button panel and the Joystick create the new ECI system “Energreen Control Interface”, exclusive by Energreen. This system allows to control all the functions of the machine in a simple and intuitive way, allowing also the customization of the screens based on the oprator preferences. The new ergonomic Joystick (2), integrated into the seat with emergency stop button (3) and buttons for movements of front lifter (if present), ensures the control of the boom and of the tool with ease and the maximum precision.



DISPLAY
ECI
ENERGREEN
CONTROL
INTERFACE



TELESCOPIC BOOM



T10 33'

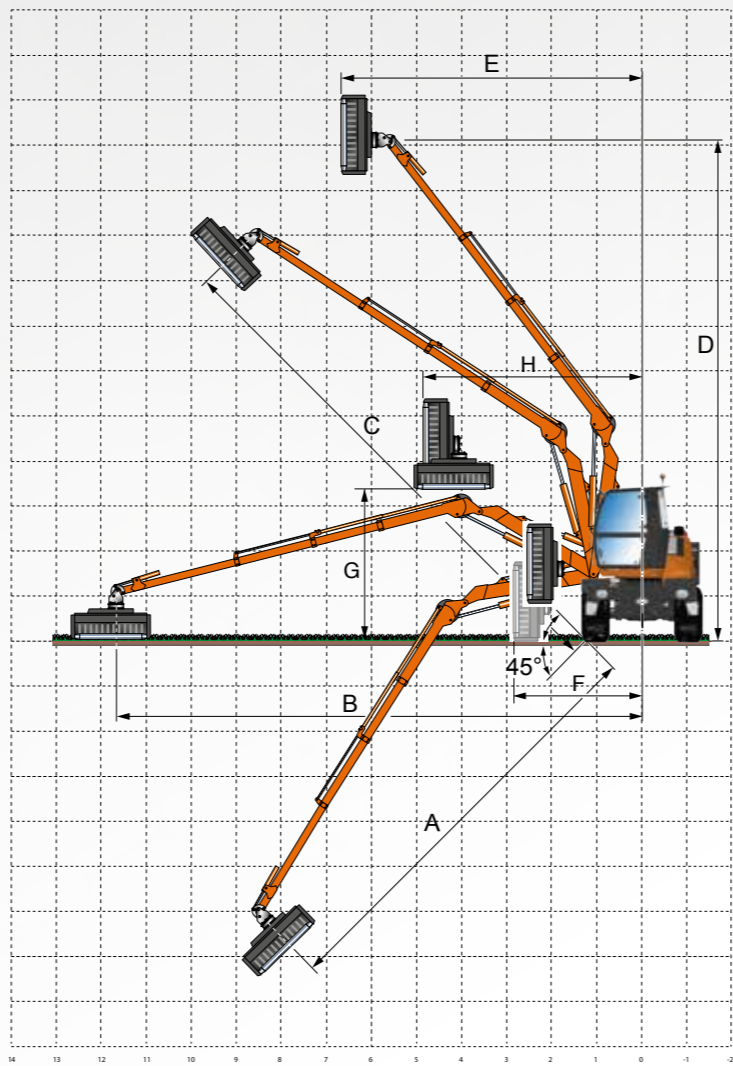


The telescopic boom **T10** is sturdy and multifunctional. It is able to safely work with every kind of attachments. This boom has been designed both for long distance activity and for working in narrow areas on the edge of the street.

Models:
T10 (33 ft)

FEATURES

- Boom up to 33 ft.
- Suitable for long distance.
- Extended boom but with compact size.
- Cutting of branches in vertical position.
- Versatile use of various tools.



A	B	C	D	E	F	G	H
25' 7"	32' 9"	31' 1"	31' 8"	16' 7"	8' 6"	9' 1"	15' 2"

All dimensions are to be considered with a 59" NEW SPEED flail head in the most extreme fixing position.

Technical and construction specifications may be subject to change without prior notice.

ATTACHMENTS

THE SUITABLE TOOL FOR EVERY JOB



NEW SPEED
47"
FLAIL HEAD



NEW SPEED
59"
FLAIL HEAD



FORESTRY HEAD
FORESTRY HEAD
WITH FIXED TEETH



ROTARY MOWER



SAW BAR
CUTTER DISCS BAR



CUTTER BAR



POWER SHEARS



IRON BRUSH



DITCH CLEANER



ORANGE PEEL GRAPPLE



TRUNK PINCERS



FORC-ONE



EXTRA TRUNK
PRUNING SCISSORS-PINCERS



STUMP GRINDER



ROTATOR UNIT
ROTATOR UNIT FOR 180° ATTACHMENTS ROTATION



ATTACHMENTS



ENGINE

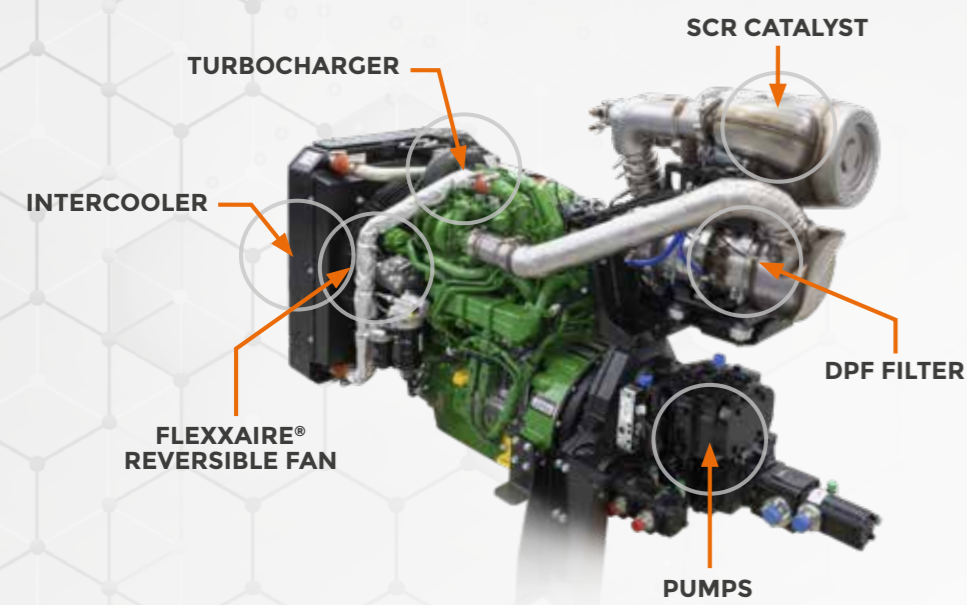
ILF ALPHA E

John Deere Power Engine

ILF Alpha E is equipped with a 4-stroke engine John Deere 4.5 with 173 HP (129 kW), 4-cylinder inline engine with liquid-cooled, external exhaust gas recirculation and EPA Tier 4f emissions.

The powerful Common Rail injection system with high pressure with 2 valves per cylinder and the electronic engine control (EMR) with intelligent link to the drive management ensures optimum engine performance at low fuel consumption.

- Minimum consumption of fuel compared to competitors.
- Technical support and diagnosis provided by John Deere's worldwide service network.



JOHN DEERE 4.5

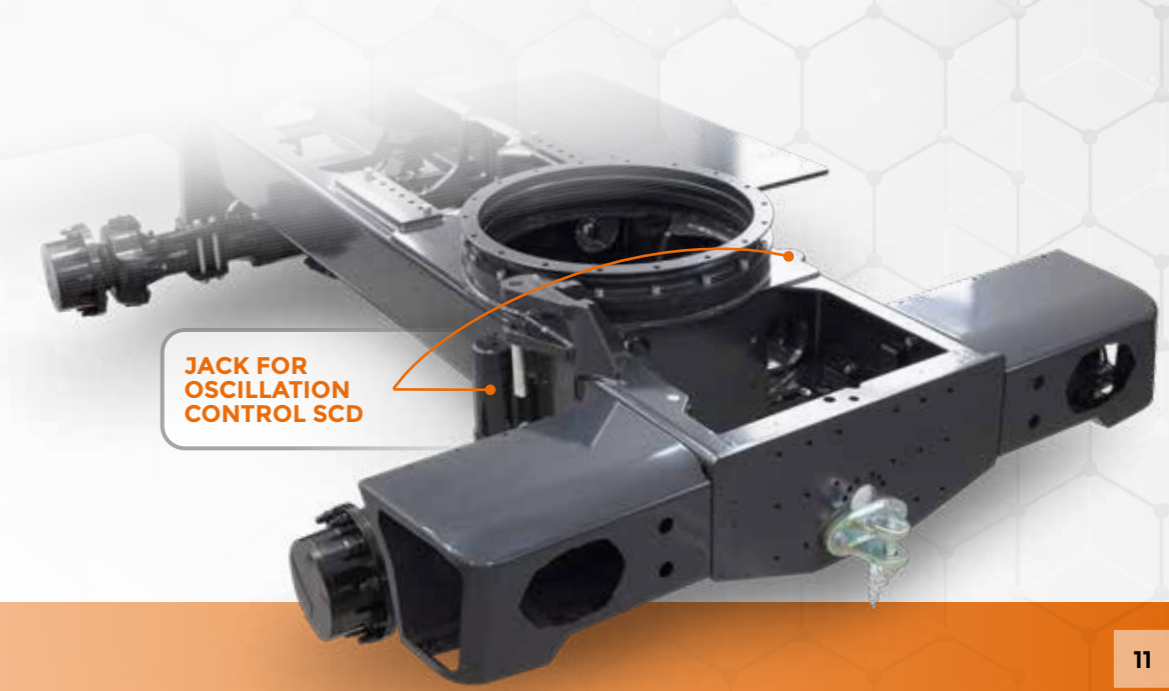
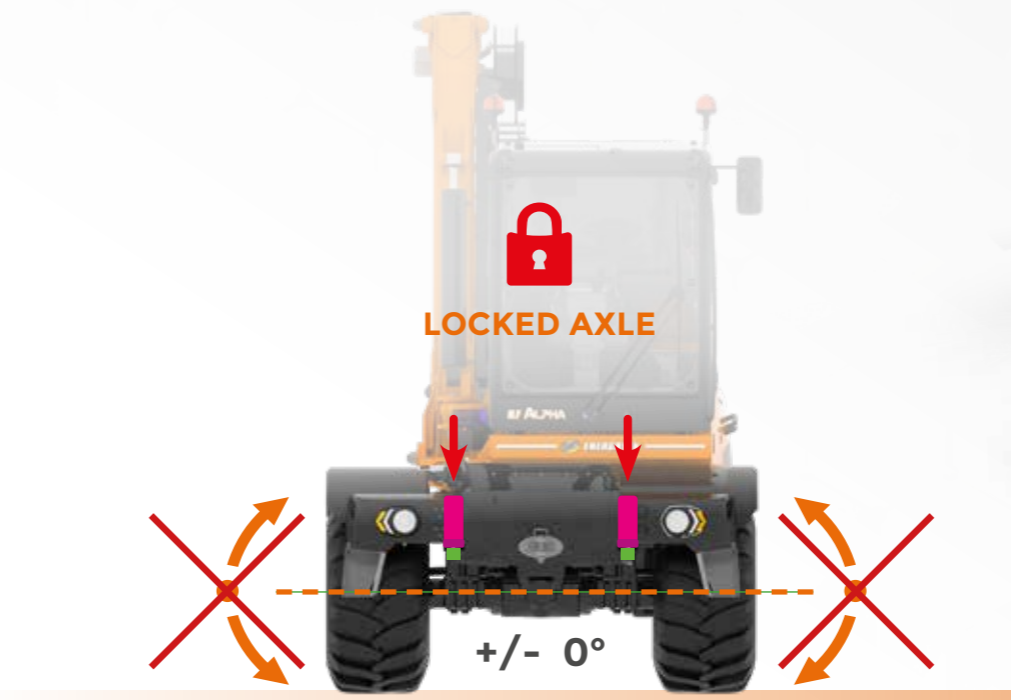
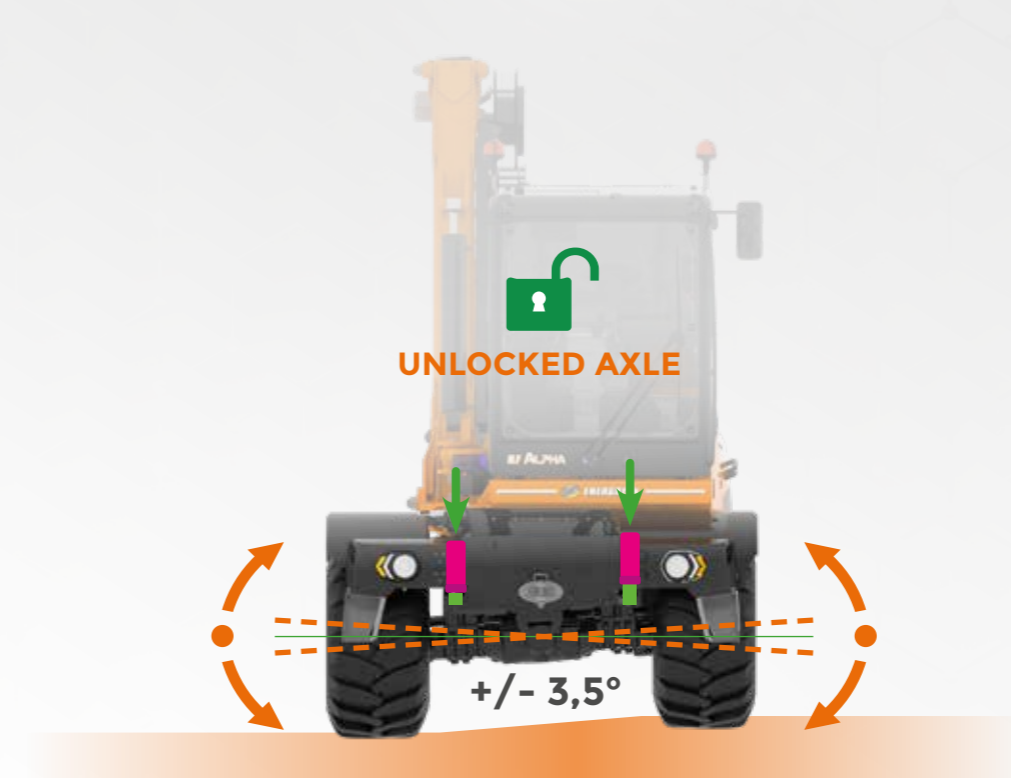


STABILITY

Stability Control Device

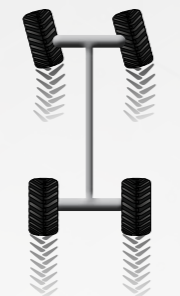
The **Stability Control Device*** allows to lock the front axle oscillation, increasing the stability of the machine, in order to guarantee the maximum level of performance and safety for the operator. This plus is composed by two hydraulic jacks fixed on the chassis of the machine and controlled by the innovative ECI system inside the cab.

* If the machine is Easy Ride, refer to the previous page for the operation of the SCD system.

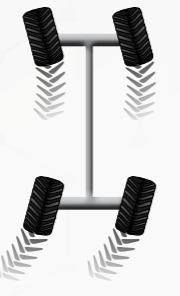




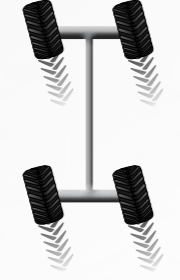
2 STEERING WHEELS



4 STEERING WHEELS CONCENTRIC



4 STEERING WHEELS PARALLEL



Agility and Accuracy in the Movements

The polyvalent soul of this machine is highlighted also from the 4-wheel drive traction system, all steering, hydraulically configurable from the cab control in 3 different operating modes:

- **2 front steering wheels**, for the maximum agility on road movement.
- **4 steering wheels**, a system that halves the turning range of the machine, ideal for working in narrow areas.
- **4 parallel steering wheels (crab)**, useful for moving special tools or for moving away from an obstacle.

TIRES



OPTION A
ALLIANCE 18 PR
600/50 331



OPTION B
NOKIAN 600/50
R 22,5 159D

GREASING



AUTO LUBE Automatic greasing system

The **AUTO LUBE** system is built with an electric greasing pump, electronically controlled, that allows to work independently and to be programmed to ensure the best grease of pins and bushing of the boom, of hydraulic cylinders, of the cab rotator unit and axles. Moreover, this system allows an important reduction of maintenance hours.



ACCESSORIES



Integrated strong steps for easily access in the cabin



Retractable folding step for easily access at maintenance



Special USA lights



Passenger seat



Roof window with safety grill, sunshade and windshield wiper



Adjustable steering wheel



Left mirror

CABIN

Rotating cabin	Up to 90°
Steering wheel	Adjustable
Joystick	Electronic
Air conditioning	Electronic
Rear glasses	Darkened anti UV
Cabin door	Partailly openable upper part
Adjustable seat	Air suspension
Power socket	12 V
Battery switch	Automatic
Cabin homologation	FOPS-ROPS

ENGINE

Brand	John Deere 4.5 4045CI
Type	4 Cylinders Diesel
Power	173 HP
Injection	Common Rail - 4 valves
Exhaust emissions	EPA Tier 4f
Alternator	200 A.
Pre-heating air engine intake	
Air intercooler radiator	
Reinforced cooler radiator	
Self-cleaning reversible fan	
Fuel tank capacity	65 gal
AdBlue capacity	6 gal

DIMENSIONS AND WEIGHT

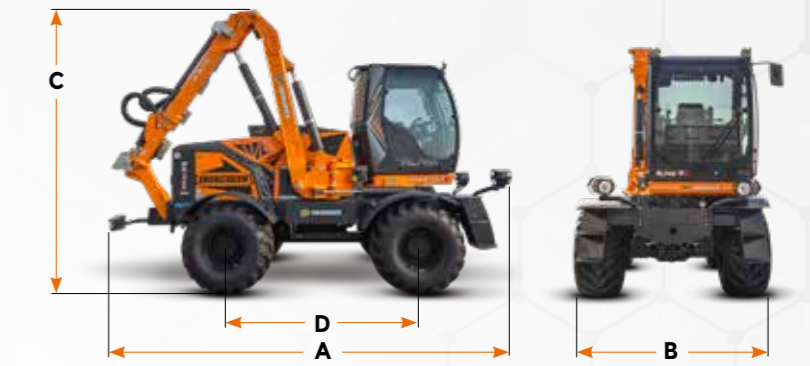
A Lenght	213 in
B Width	99 in
C Height	155 in
D Wheelbase	98 in
Machine weight without attachments	28660 lbs

HYDRAULIC SYSTEM

Closed circuits	
Cutting heah	Piston
Translation pump	Piston
Open circuits	
Boom movement	Gear
Brakes system	Gear
Steering system	Gear
Hydraulic distributor	6 sections
Oil flow attachment	42 gal/min
Oil pressure attachment	4206 psi

TRASMISSION AND BRAKES

Transmission	Hydrostatic
Traction	Selectable 4wd or 2wd
Speed variation	0 - 24 mph
Manual gearbox	2 gears
Wheel alignment	Electronic
Front axle	Oscillating
Front axle block	Hydraulic
Steering axles	2 axles
Front axle block	100%
Rear axle block	100%
Parking brake	Negative
Service brakes	8 discs



TECHNICAL DATA

Technical and construction specifications may be subject to change without prior notice.



ILF ALPHA

ENERGREENAMERICA.COM



SELF-PROPELLED HYDROSTATIC MACHINES



Local dealership



ENERGREEN America · 227 Trade Ct. · Aiken · SC 29805 · USA
Phone 470 989 2600 · info@energgreenamerica.com
www.energgreenamerica.com

PROFESSIONAL MACHINES AND ATTACHMENTS



EUSDP2100100 - 02/24 - © Energgreen America 2024 - All rights reserved
Photo, technical and constructive characteristics subjected to modification without reporting requirement.