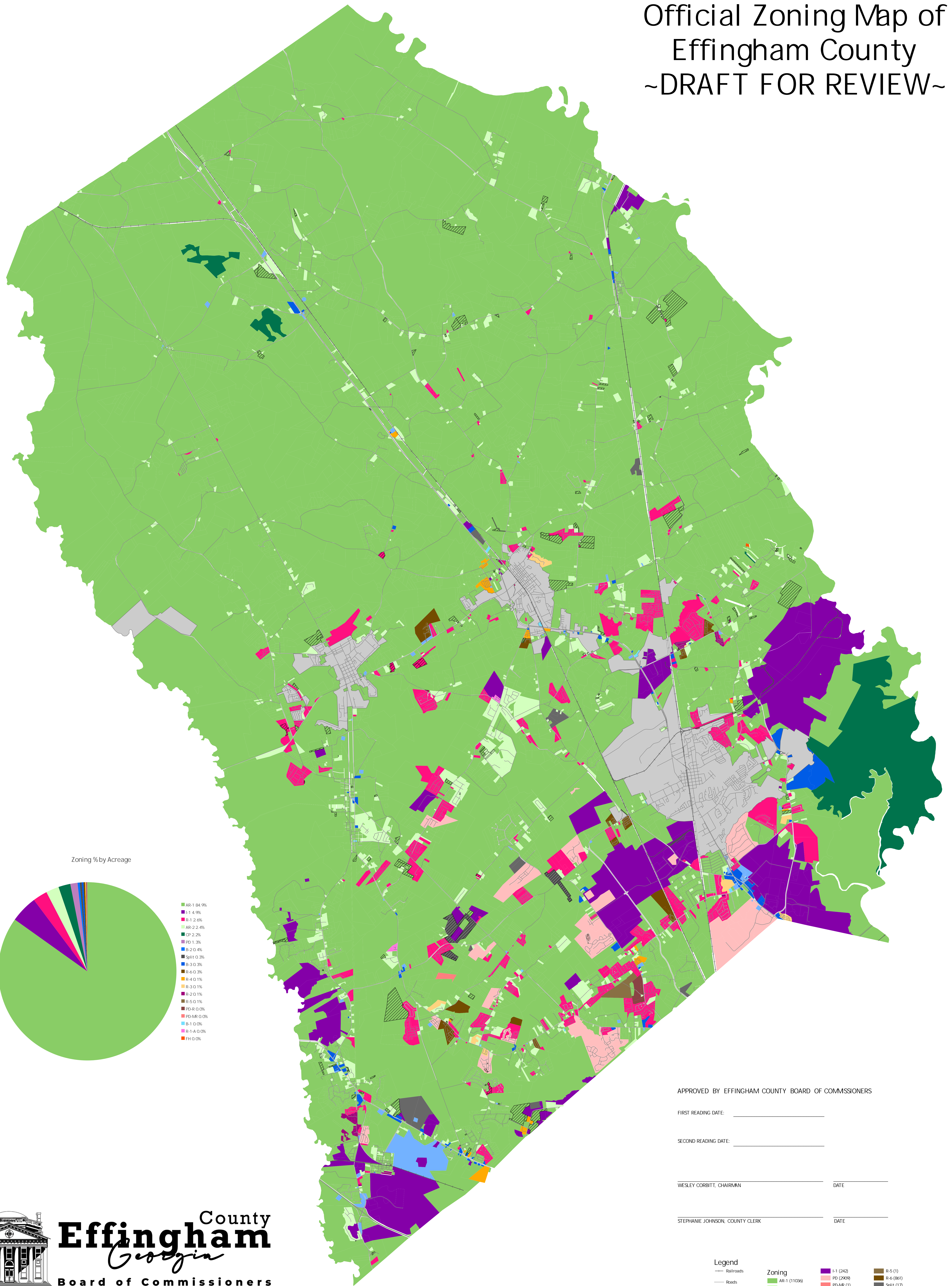
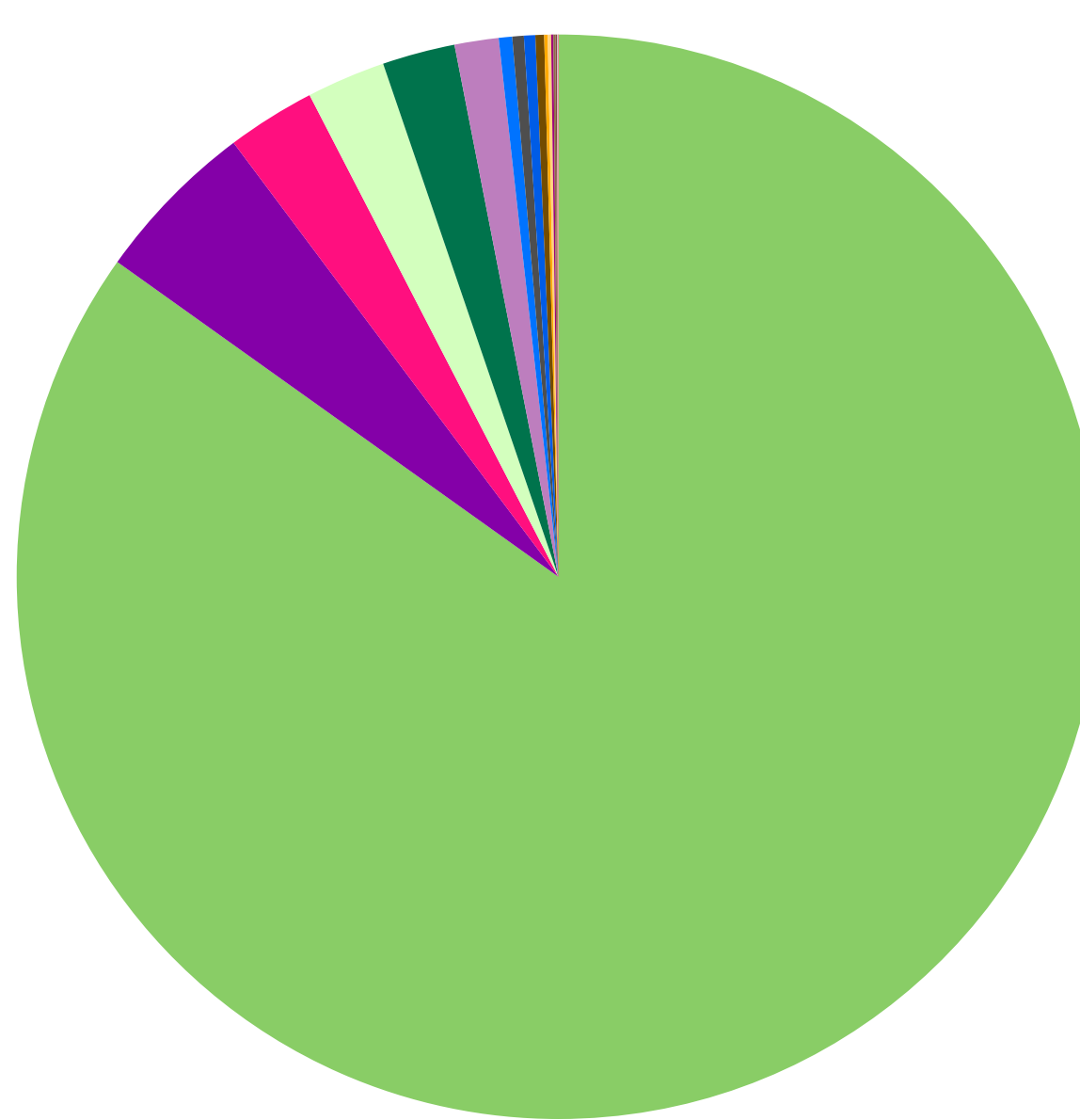


# Official Zoning Map of Effingham County

## ~DRAFT FOR REVIEW~



Zoning % by Acreage



- AR-1 (84.9%)
- E-1 (4.9%)
- R-1 (2.4%)
- AR-2 (2.4%)
- CP-2 (2.2%)
- PD-1 (1.3%)
- B-2 (0.4%)
- SPH-1 (0.3%)
- B-3 (0.3%)
- R-6 (0.3%)
- R-4 (0.1%)
- R-3 (0.1%)
- R-2 (0.1%)
- R-5 (0.1%)
- PD-R (0.0%)
- PD-MR (0.0%)
- B-1 (0.0%)
- R-1-A (0.0%)
- FH (0.0%)

APPROVED BY EFFINGHAM COUNTY BOARD OF COMMISSIONERS

FIRST READING DATE: \_\_\_\_\_

SECOND READING DATE: \_\_\_\_\_

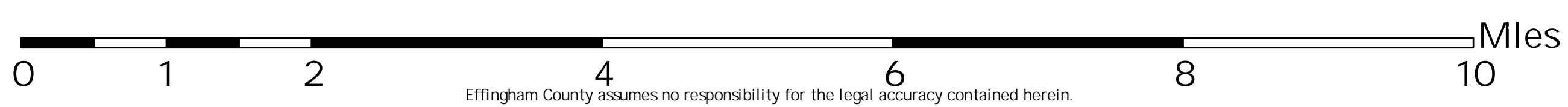
WESLEY CORBITT, CHAIRMAN \_\_\_\_\_ DATE \_\_\_\_\_

STEPHANIE JOHNSON, COUNTY CLERK \_\_\_\_\_ DATE \_\_\_\_\_

- Legend**
- Railroads
  - Roads
  - Municipal Boundary
  - Zoning Under Review
- Zoning**
- AR-1 (11036)
  - AR-2 (2957)
  - CP (9)
  - FH (1)
  - B-1 (119)
  - B-2 (148)
  - B-3 (157)
  - I-1 (242)
  - PD (2909)
  - PD-MR (1)
  - PD-R (6)
  - R-1 (6406)
  - R-1-A (46)
  - R-2 (236)
  - R-3 (52)
  - R-4 (26)
  - R-5 (1)
  - R-6 (861)
  - SPH (17)



Effingham County  
**Effingham**  
*Georgia*  
 Board of Commissioners



Effingham County assumes no responsibility for the legal accuracy contained herein.