



**FORESITE**  
group

## Effingham County SS4A Commission Briefing

■ May 21, 2024

- What is SS4A?
- Study Schedule
- Progress to Date
- Public Meeting #1
- Next Steps





## What is Safe Streets for All (SS4A)

- SS4A is a federal program to help advance the nation’s goal of Zero Roadway Deaths.
- \$1 Billion/year is allocated for Vision Zero Planning, Demonstration & Implementation.
- First time local government have access to funds dedicated to understanding safety issues in their communities.
- Allows communities to develop a Safe System Approach that includes prioritizing:
  - Safe Speeds
  - Safe, convenient options for transit, walking & biking.
  - Self-enforcing roadway designs & Complete Streets for all road users.
  - Equitable strategies & outcomes, not over-reliance on enforcement & education measures.





## What does SS4A Look like for Effingham County?



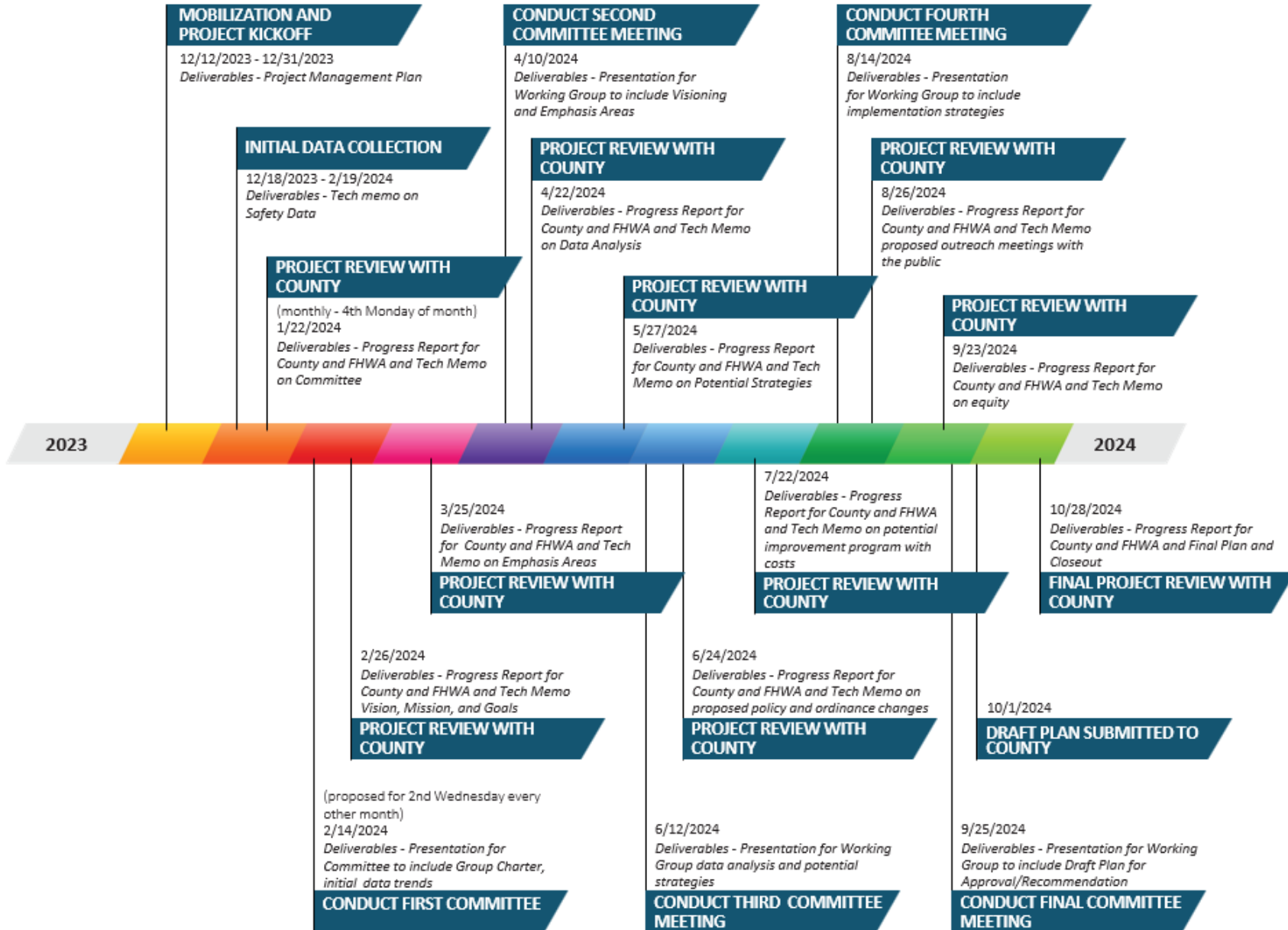
### ■ Here are the elements of our study effort:

- Safety Data Analysis
- Community Engagement
- Development of Emphasis Areas
- Identify Strategies to Address Emphasis Areas
- Development of the SS4A Plan

**Craft a plan that focuses on County facilities**



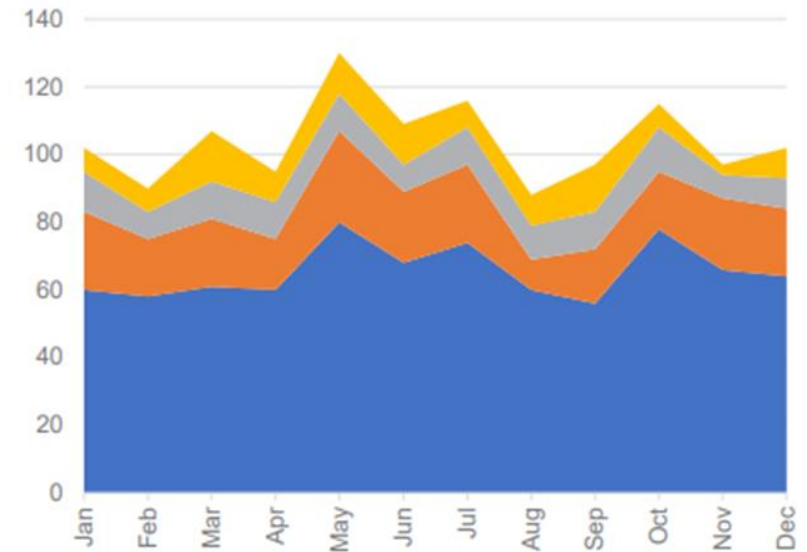
# Overall Project Schedule

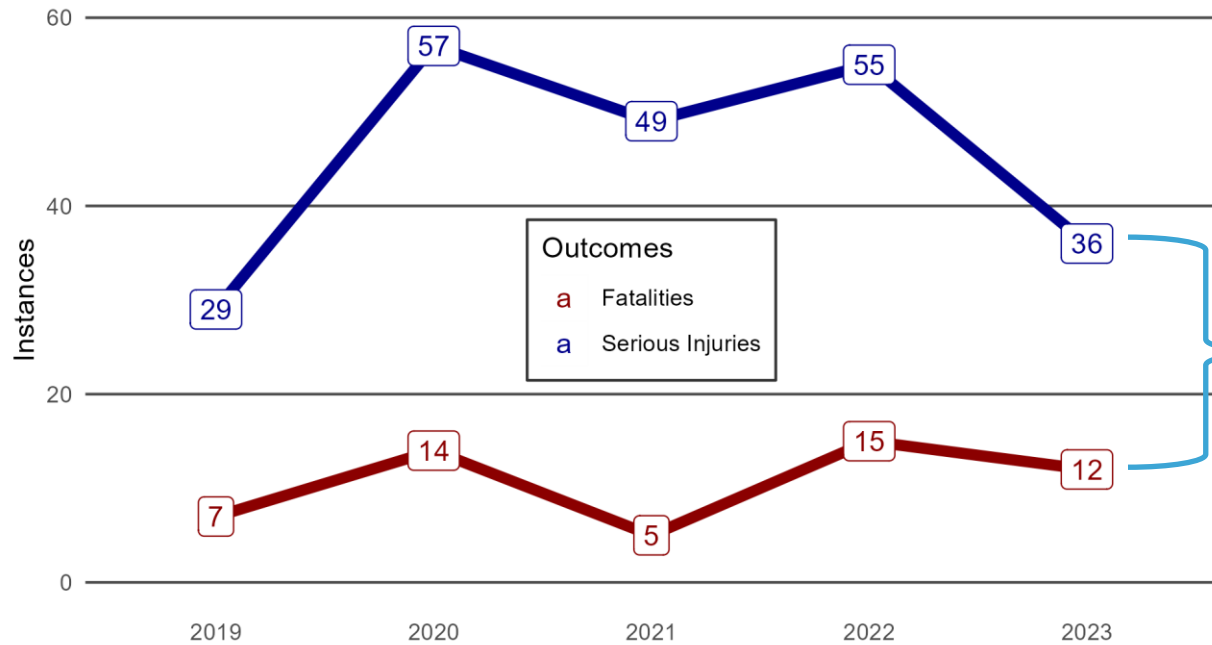


Completion of Study Effort end of 2024



- ✓ Development of Technical Memos
  - ✓ Project Management Plan
  - ✓ Public Involvement Plan
  - ✓ Stakeholder Committee
  - ✓ Data Collection
  - ✓ Data Analysis
  - ✓ Safety Assessment
  
- ✓ Two of Five Stakeholder Committee Meetings held





**48** fatalities (K) and serious injuries (A) just last year

Intersection Related

Segment Related

*(Rear Ends and Lane Departures)*

Manner of Collision	Fatalities	Serious Injuries	Total	Percent
<b>Angle</b>	12	78	90	32%
<b>Not with a Motor Veh.</b>	25	93	118	42%
<b>Head-on</b>	6	24	30	11%
<b>Rear End</b>	8	15	23	8%
<b>Sideswipe - Opposite Dir.</b>	1	6	7	2.5%
<b>Sideswipe - Same Dir.</b>	1	9	10	3.5%

32%

68%



# High Injury Network (HIN)

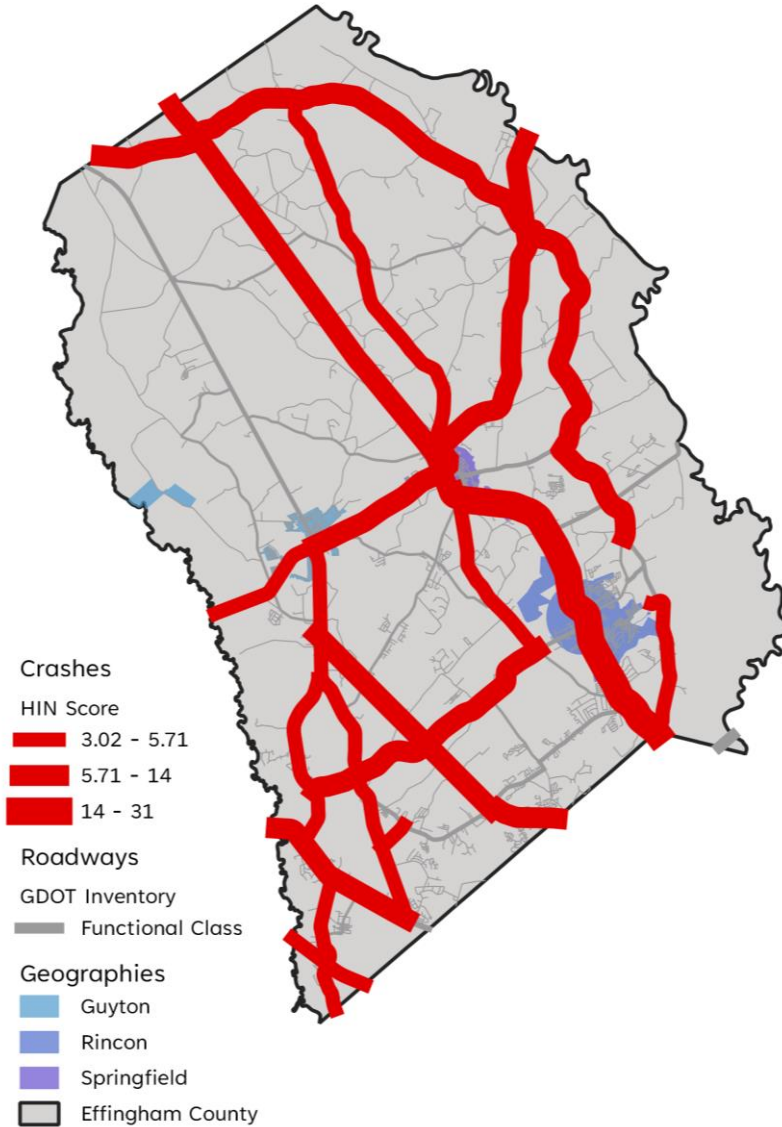
A combination of **need** and **risk** of Effingham corridors

The HIN shown here are a combination of **systemic score** and **location score**.

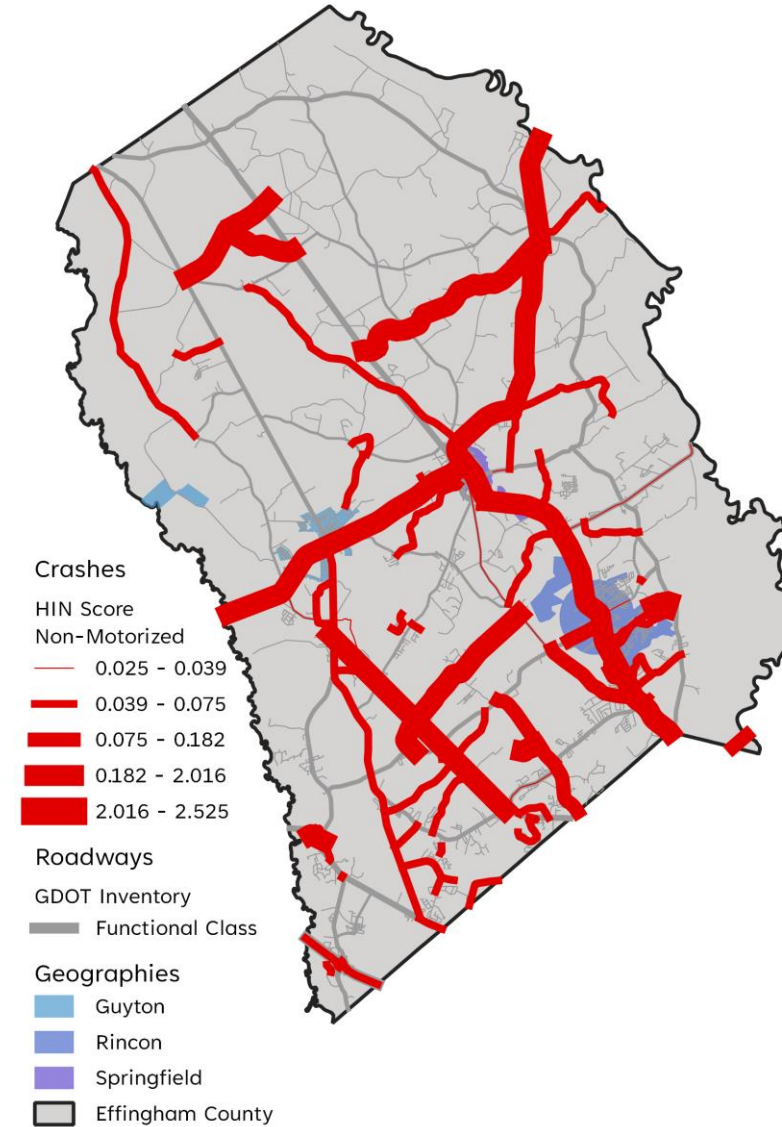
**Location Score** =  
Fatalities + Serious Injuries

**Systemic Score** =  
Expected crashes based on high-risk road attributes

### Entire HIN



### Active Modes Only HIN







- Open 5 to 7 pm May 22, 2024
- Clarence E. Morgan Complex Effingham Gym
- Goal of meeting is to:
  - Orient the public on the Safe Streets For All (SS4A) planning effort underway
  - Share information on what the data tells us about safety in the County
  - Solicit feedback from the public on safety areas of concern
  - Provide public an update on projects underway in the County





- Assess countermeasures to apply to the County HIN
- Assess policies that will assist in improved safety
- Develop emphasis areas and strategies for the County
- Develop an actionable plan



**PROVEN SAFETY COUNTERMEASURES**

**SPEED MANAGEMENT**



Speed Safety Cameras



Variable Speed Limits



Appropriate Speed Limits for All Road Users

**PEDESTRIAN/BICYCLIST**



Crosswalk Visibility Enhancements



Bicycle Lanes



Rectangular Rapid Flashing Beacons (RRFB)



Leading Pedestrian Interval



Medians and Pedestrian Refuge Islands in Urban and Suburban Areas



Pedestrian Hybrid Beacons



Road Diets (Roadway Reconfiguration)



Walkways

**INTERSECTIONS**



Backplates with Retroreflective Borders



Corridor Access Management



Dedicated Left- and Right-Turn Lanes at Intersections



Roundabouts



Systemic Application of Multiple Low-Cost Countermeasures at Stop-Controlled Intersections



Yellow Change Intervals



Reduced Left-Turn Conflict Intersections

**CROSSCUTTING**



Pavement Friction Management



Lighting



Local Road Safety Plans



Road Safety Audit

**ROADWAY DEPARTURE**



Wider Edge Lines



Enhanced Delineation for Horizontal Curves



Longitudinal Rumble Strips and Stripes on Two-Lane Roads



SafetyEdgeSM



Roadside Design Improvements at Curves



Median Barriers



Erik Steavens – [esteavens@fg-inc.net](mailto:esteavens@fg-inc.net)

Tel: 404-401-3056

Doug Stoner – [dstoner@fg-inc.net](mailto:dstoner@fg-inc.net)

Tel: 770-368-1399

Devesh Doobay- [ddoobay@fg-inc.net](mailto:ddoobay@fg-inc.net)

Tel: 347-426-8121

