

Thomas Seago
District Manager
Summit
Cell-769.990.3457
thomas.seago@summitfoodservice.com

From: Hull, Matthew <Matthew.Hull@ecolab.com>
Sent: Thursday, April 11, 2024 2:11:21 PM
To: Thomas Seago <thomas.seago@summitfoodservice.com>
Cc: Weston, Taylor <taylor.weston@ecolab.com>
Subject: [EXTERNAL] Ecolab Dishmachine SUM C2063 EFFINGHAM COUNTY-WW/LY/HS

Thomas, thank you for your time this afternoon, I have copied in Taylor so that if you have any questions next week while I am on my cruise you can get those answered.

Below price options on machines:
These prices are estimates and are subject to change once the lease is created.

Double Rack Es4000:

Around \$163.58 per month with a \$200 dollar a month Chemical Purchase Requirement.
24 Month Term

— Paid By Summit

ECl Conveyor:

Around \$278.52 per month with a \$300 dollar a month Chemical Purchase Requirement.
12 Month Term

Please let me know what model you would like to go with, and we can create the lease upon my return on the 23rd. The lease will have the exact price.

Kindest Regards,

CONFIDENTIALITY NOTICE: This e-mail communication and any attachments may contain proprietary and privileged information for the use of the designated recipients named above. Any unauthorized review, use, disclosure or distribution is prohibited. If you are not the intended recipient, please contact the sender by reply e-mail and destroy all copies of the original message.



SUPERIOR CLEANING, RELIABLE PERFORMANCE

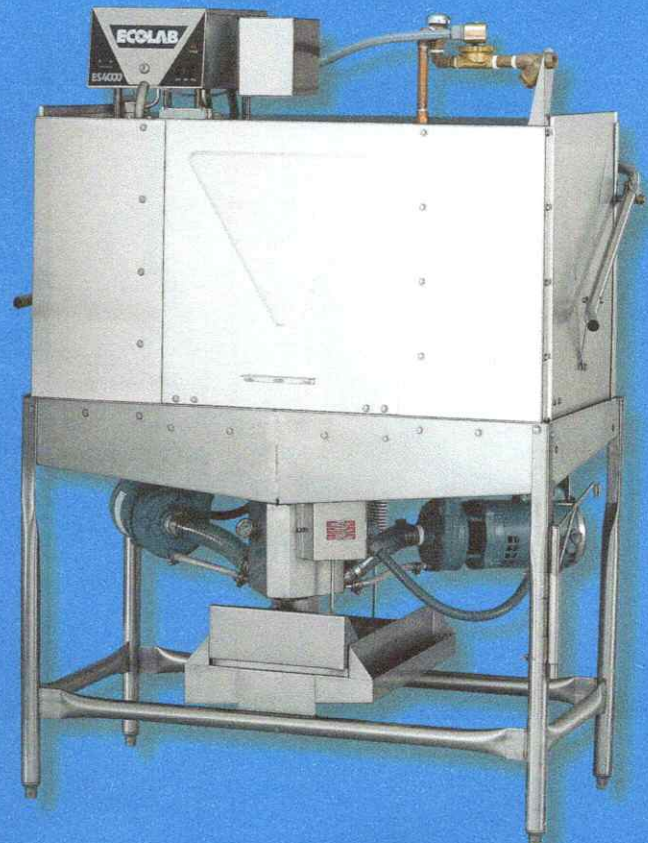
ES-4000 Dishmachine

- ▲ Low temperature, Energy Star® machine helps reduce operating costs.
- ▲ Self-cleaning internal sump helps ensure a clean final rinse.
- ▲ Unique design helps ensure uncontaminated water is used in every cycle.

.....

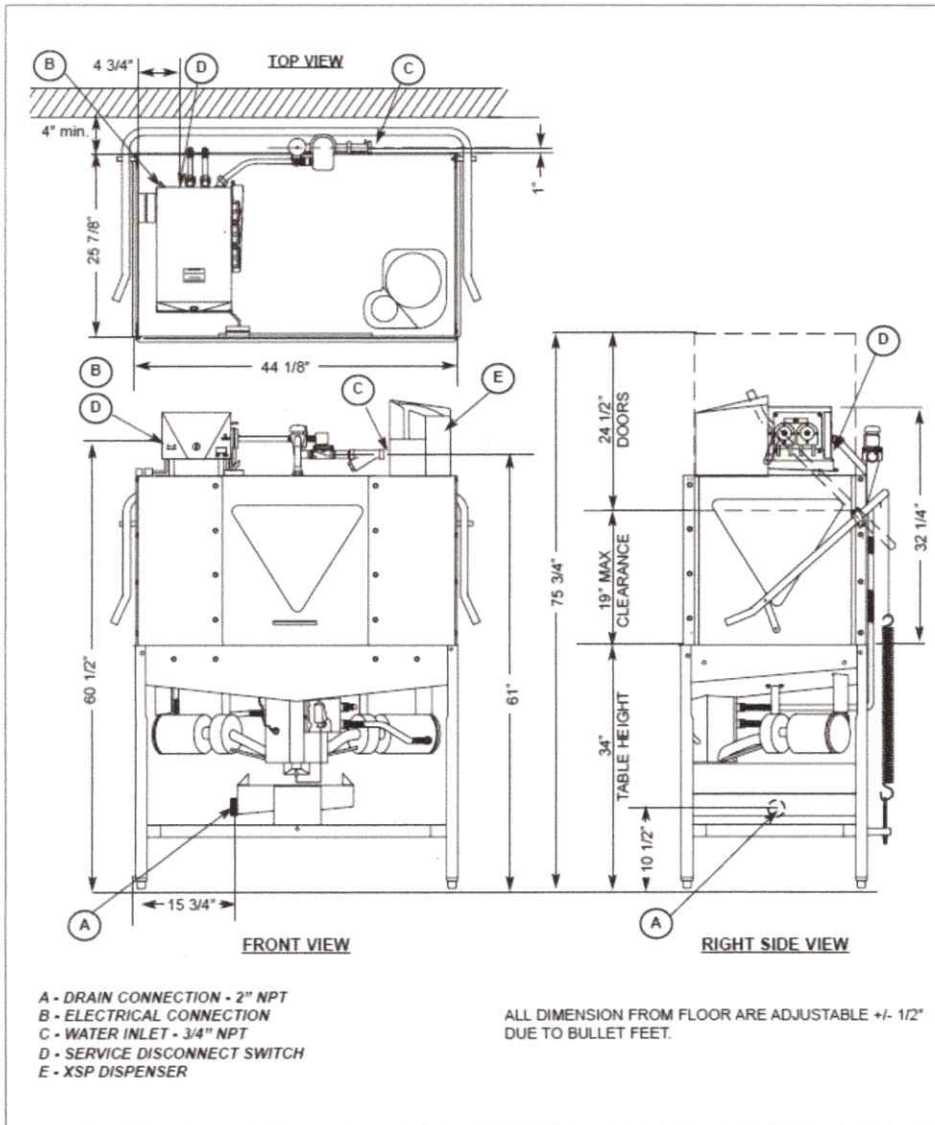
Renting a dishmachine from Ecolab allows you to focus on your business with the security of knowing your warewashing operation is properly managed.

.....



ECOLAB DISHMACHINE RENTAL PROGRAM

The highest level of clean backed by service you can trust.



ES-4000 SPECIFICATIONS

OPERATING CAPACITY	
Racks per Hour	78
OPERATING CYCLE (LIGHT)	
Total Cycle Time	77
OPERATING CYCLE (NORMAL)	
Wash Time	53
Dwell Time	20
Rinse Time	14
Load Time	5
Total Cycle Time	92
OPERATING TEMPERATURES	
Wash (minimum)	120° F
Sanitizing Rinse (min)	120° F
WATER CONSUMPTION	
Gallons per Rack	1.17
ELECTRICAL RATINGS	
Wash Pump	3/4 hp
WASH CHAMBER	
Height	17"
WEIGHT	
Machine Weight	310 lbs
UTILITY REQUIREMENTS ELECTRICAL	
Voltage/Frequency/Phase: 115V/60Hz/1 Ph	
Total Amperage	23 A
Minimum Electrical Circuit	30 A
WATER	
Waterline Size (min)	3/4"
Flow Pressure (required)	15-25 psi
Incoming Temperature (min)	120° F
Incoming Temperature (recommended)	140° F
DRAIN	
Drainline Size (minimum)	2"

Enhance Warewashing Results with a Managed Water Softening Program



- Water hardness over 7 grains per gallon significantly impacts warewashing results. Ecolab's POU water softener helps you achieve superior results at a lower operating cost
- Single point of accountability for improved results
- Worry-free renting includes and maintenance
- Compact cabinet design unit fits under most dish tables
- Uses less salt than conventional hot water softeners

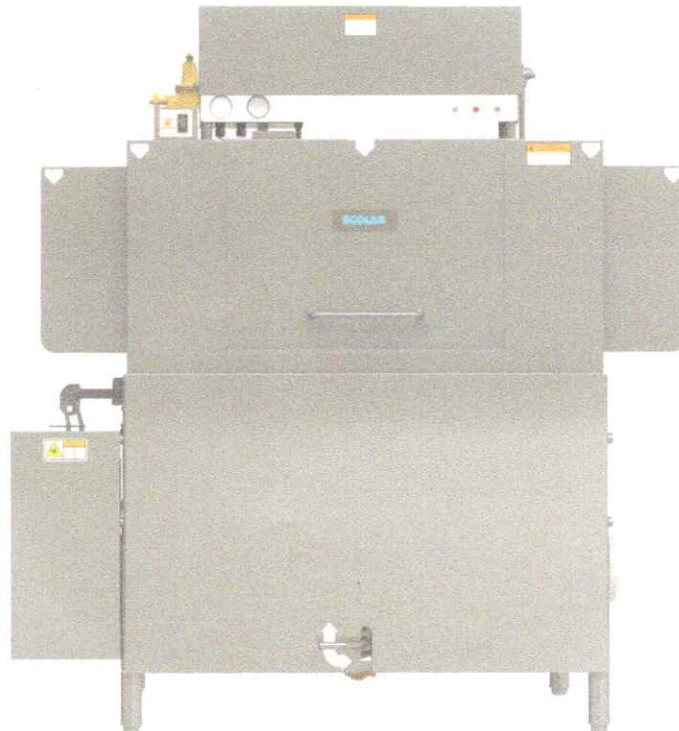


LOW WATER CONVEYOR DISHMACHINE DUAL RATED FOR HIGH AND LOW TEMPERATURE OPERATIONS

EC-LW Conveyor Dishmachine

- ▲ NSF certified 0.62 gals/rack provides one-pass wash results with water and energy efficiency.
- ▲ Free-flow wash intake inhibits clogging, improves performance, reduces maintenance.
- ▲ 44" and 66" sizes available with High Hood and Sideloader options to configure for your needs.

.....
Renting a dishmachine from Ecolab allows you to focus on your business with the security of knowing your warewashing operation is properly managed.
.....



EC-LW Conveyor Dishmachine

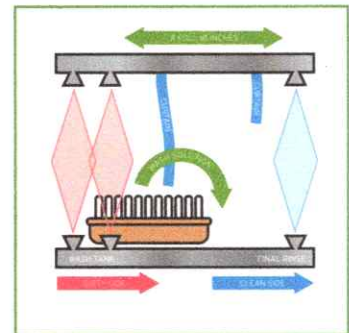
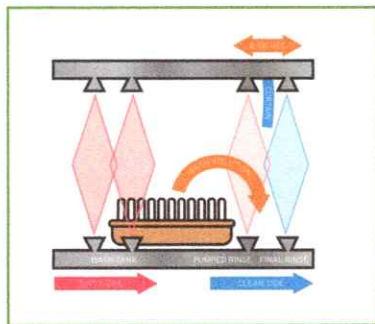
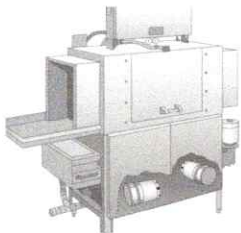
Saves Water and Conserves Energy

PROBLEM:

- ▲ 66" dishmachine design forced into 44" cabinet.
- ▲ Wash solution gets re-deposited into pumped rinse tank.
- ▲ Dish racks move so quickly that wash solution doesn't have time or distance to fall back into the main wash tank.
- ▲ Only 8" separating newly detergent charged pumped rinse tank from final rinse.

SOLUTION:

- ▲ Ecolab's EC-44 conveyor is designed as a 44" dishmachine with 18" of wash and rinse separation.
- ▲ Offers sufficient fall back for wash detergent.
- ▲ S.S. pump and impeller assembly, 2hp wash pump motor.



44" Conveyor
EC44-LW, EC44HH-LW



66" Conveyor
EC66-LW, EC66HH-LW

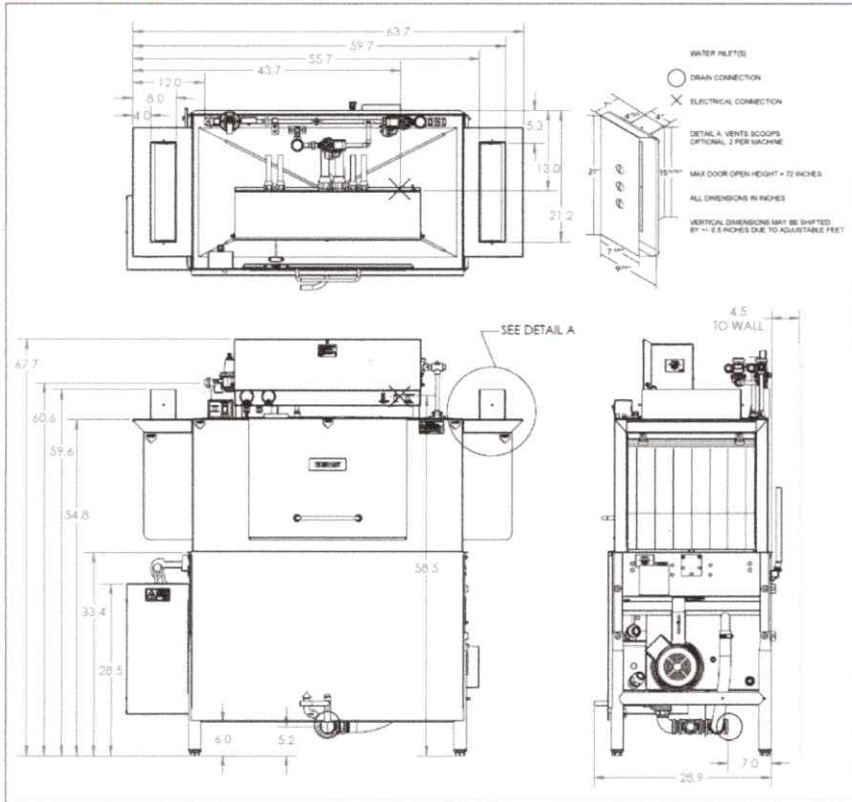
EC-LW Conveyor Dishmachine Features

- ▲ NSF certified 0.62 gals/rack provides one-pass wash results with water and energy efficiency.
- ▲ Free-Flow wash intake inhibits clogging, improves performance, reduces maintenance.
- ▲ Separation of wash and rinse sections helps prevent water contamination in the final rinse.
- ▲ High throughput of up to 244 racks per hour provides fast results.
- ▲ Extended 18" wash section provides consistent results.
- ▲ 66" Conveyor offer all the benefits of the 44", and adds pre-wash section to remove heavy soil and deposits.
- ▲ High Hood configuration offers 25" clearance in wash chamber.
- ▲ Sideloader option allows for placement in tight corner locations.

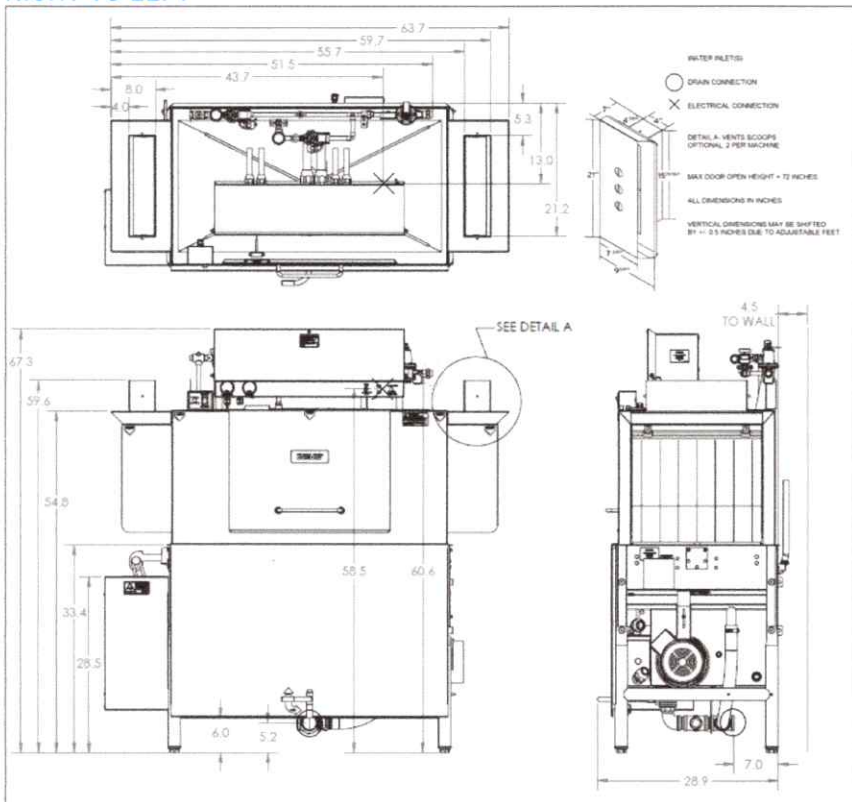
EC44-LW



LEFT TO RIGHT



RIGHT TO LEFT



SPECIFICATIONS

OPERATING CAPACITY

Racks per Hour 244

OPERATING TEMPERATURES

Wash (min)
 low-temp 140° F
 high-temp 160° F

Sanitizing Rinse (min)
 low-temp 120° F
 high-temp 180° F

WATER CONSUMPTION

Gallons per Rack 0.62

ELECTRICAL RATINGS

Wash Pump 2 hp

Drive Motor 1/4 hp

WASH CHAMBER

Internal Height 18"

WEIGHT

Machine Weight 626 lbs

UTILITY REQUIREMENTS ELECTRICAL

Voltage/Frequency/Phase:
 208V/60Hz/3 Ph
 Total Amperage 48.75 A
 Minimum Electrical Circuit 60 A

Voltage/Frequency/Phase:
 230V/60Hz/3 Ph
 Total Amperage 44.6 A
 Minimum Electrical Circuit 50 A

Voltage/Frequency/Phase:
 460V/60Hz/3 Ph
 Total Amperage 22.3 A
 Minimum Electrical Circuit 25 A

Voltage/Frequency/Phase:
 208V/60Hz/1 Ph
 Total Amperage 82.65 A
 Minimum Electrical Circuit 90 A

Voltage/Frequency/Phase:
 230V/60Hz/1 Ph
 Total Amperage 75.85 A
 Minimum Electrical Circuit 80 A

WATER

Waterline Size (min) 1/2"
 Flow Pressure (required) 15-25 psi
 Incoming Temp (min)
 low-temp 120° F
 high-temp 180° F
 Incoming Temp (recommended)
 low-temp 140° F
 high-temp 180° F

DRAIN

Drainline Size 1 1/2"

VENT HOOD

Flow-Cubic Feet per Minute 600

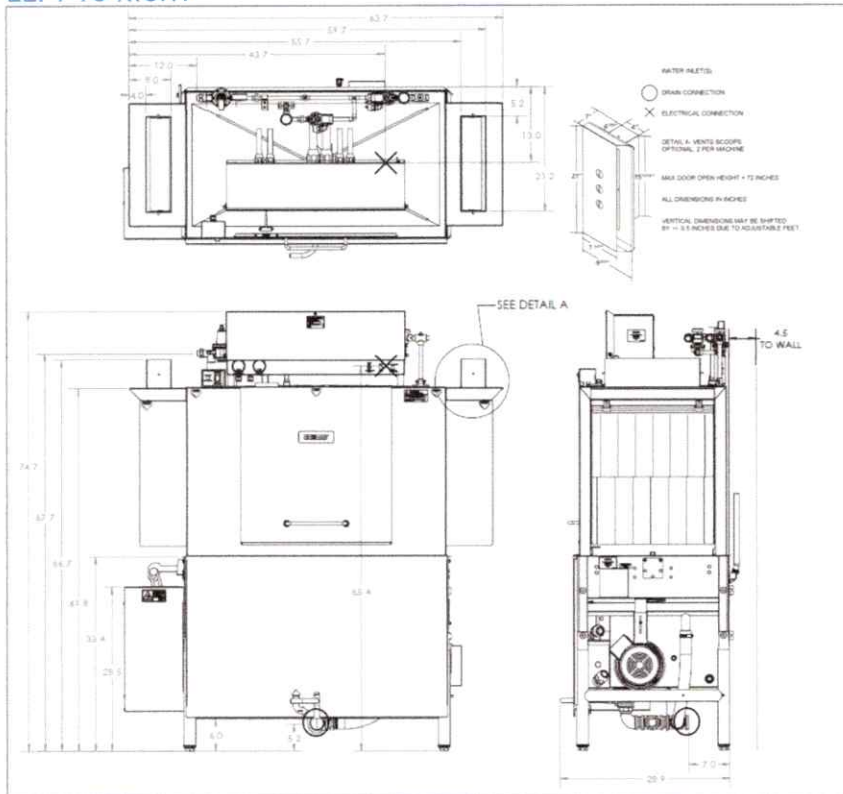
CHEMICAL SANITIZER RINSE

Minimum chlorine, ppm (low-temp) 50

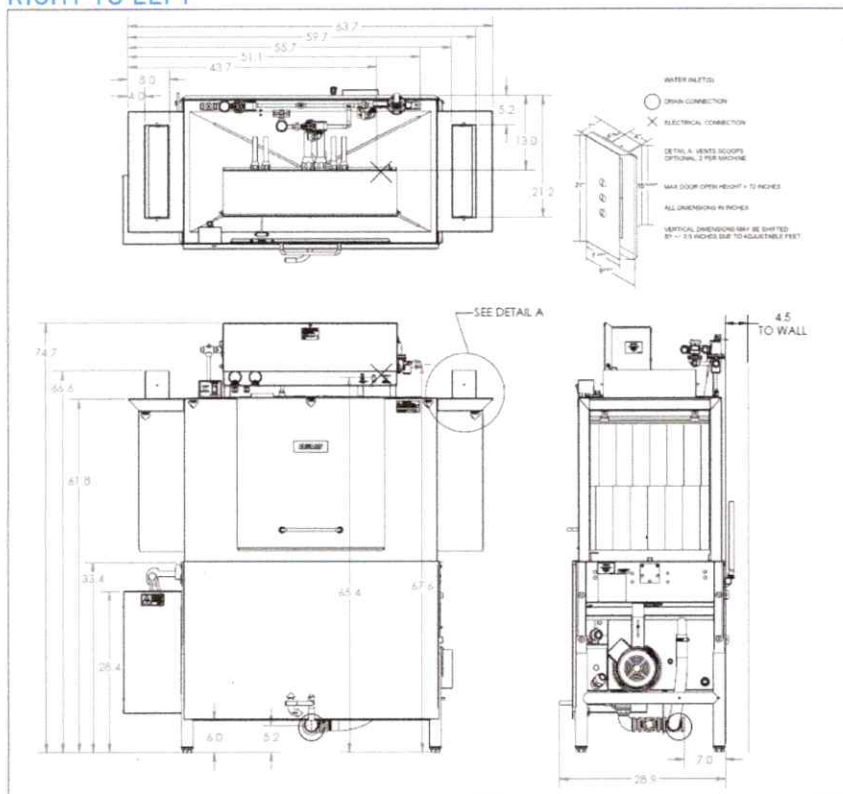
EC44HH-LW



LEFT TO RIGHT



RIGHT TO LEFT



SPECIFICATIONS

OPERATING CAPACITY

Racks per Hour 244

OPERATING TEMPERATURES

Wash (min)
low-temp 140° F
high-temp 160° F

Sanitizing Rinse (min)
low-temp 120° F
high-temp 180° F

WATER CONSUMPTION

Gallons per Rack 0.62

ELECTRICAL RATINGS

Wash Pump 2 hp

Drive Motor 1/4 hp

WASH CHAMBER

Internal Height 25"

WEIGHT

Machine Weight 637 lbs

UTILITY REQUIREMENTS ELECTRICAL

Voltage/Frequency/Phase:
208V/60Hz/3 Ph
Total Amperage 48.75 A
Minimum Electrical Circuit 60 A

Voltage/Frequency/Phase:
230V/60Hz/3 Ph
Total Amperage 44.6 A
Minimum Electrical Circuit 50 A

Voltage/Frequency/Phase:
460V/60Hz/3 Ph
Total Amperage 22.3 A
Minimum Electrical Circuit 25 A

Voltage/Frequency/Phase:
208V/60Hz/1 Ph
Total Amperage 82.65 A
Minimum Electrical Circuit 90 A

Voltage/Frequency/Phase:
230V/60Hz/1 Ph
Total Amperage 75.85 A
Minimum Electrical Circuit 80 A

WATER

Waterline Size (min) 1/2"
Flow Pressure (required) 15-25 psi
Incoming Temp (min)
low-temp 120° F
high-temp 180° F
Incoming Temp (recommended)
low-temp 140° F
high-temp 180° F

DRAIN

Drainline Size 1 1/2"

VENT HOOD

Flow-Cubic Feet per Minute 600

CHEMICAL SANITIZER RINSE

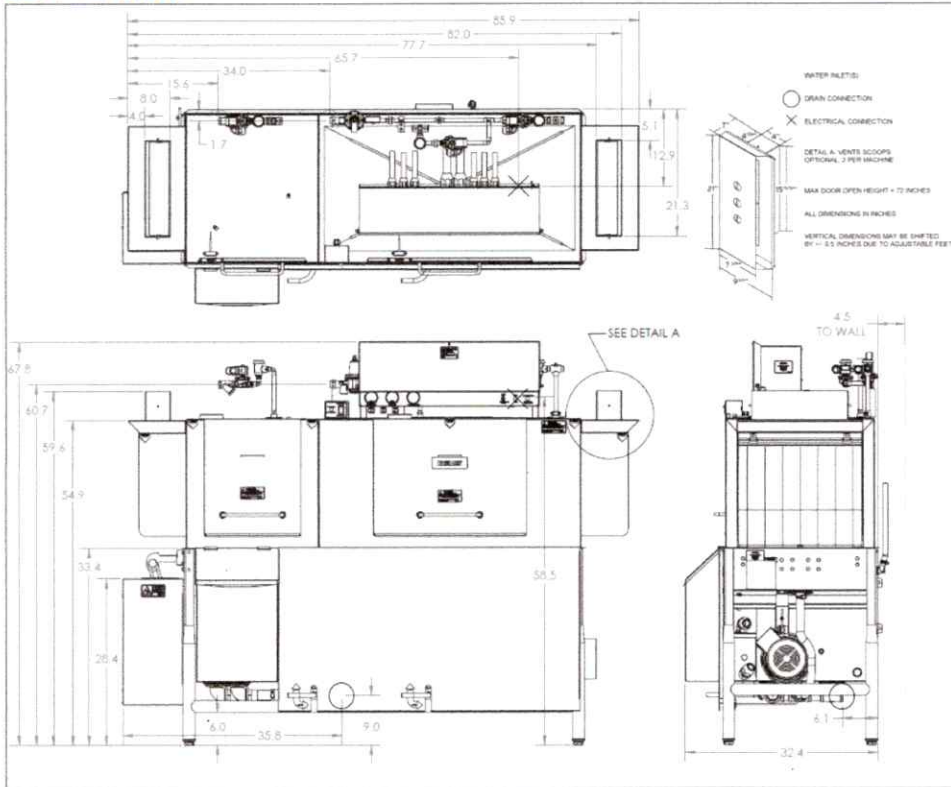
Minimum chlorine, ppm (low-temp) 50

EC66-LW

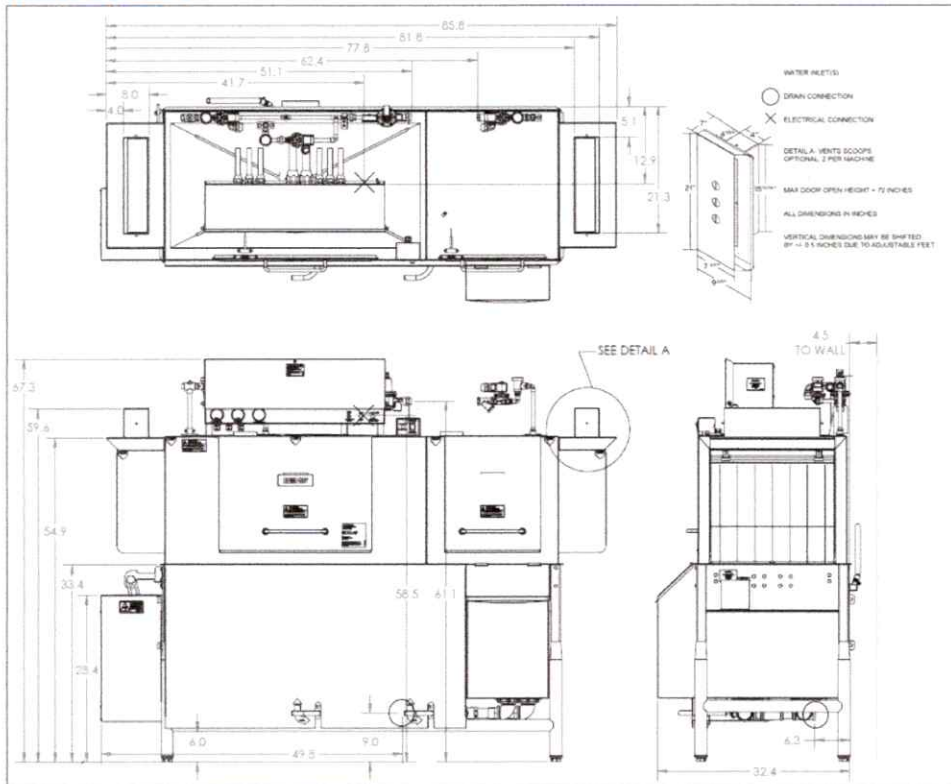


SPECIFICATIONS

LEFT TO RIGHT



RIGHT TO LEFT



OPERATING CAPACITY

Racks per Hour 244

OPERATING TEMPERATURES

Wash (min)
 low-temp 140° F
 high-temp 160° F

Sanitizing Rinse (min)
 low-temp 120° F
 high-temp 180° F

WATER CONSUMPTION

Gallons per Rack 0.62

ELECTRICAL RATINGS

Wash Pump 2 hp
 Pre-Wash Pump 1 hp
 Drive Motor 1/4 hp

WASH CHAMBER

Internal Height 18"

WEIGHT

Machine Weight 872 lbs

UTILITY REQUIREMENTS ELECTRICAL

Voltage/Frequency/Phase:
 208V/60Hz/3 Ph
 Total Amperage 52.15 A
 Typical Electrical Circuit 60 A

Voltage/Frequency/Phase:
 230V/60Hz/3 Ph
 Total Amperage 48.0 A
 Typical Electrical Circuit 60 A

Voltage/Frequency/Phase:
 460V/60Hz/3 Ph
 Total Amperage 24.1 A
 Typical Electrical Circuit 30 A

Voltage/Frequency/Phase:
 208V/60Hz/1 Ph
 Total Amperage 88.65 A
 Typical Electrical Circuit 100 A

Voltage/Frequency/Phase:
 230V/60Hz/1 Ph
 Total Amperage 81.85 A
 Typical Electrical Circuit 90 A

WATER

Waterline Size (min) 1/2"
 Flow Pressure (required) 15-25 psi
 Incoming Temp (min)
 low-temp 120° F
 high-temp 180° F
 Incoming Temp (recommended)
 low-temp 140° F
 high-temp 180° F

DRAIN

Drainline Size 1 1/2"

VENT HOOD

Flow-Cubic Feet per Minute 600

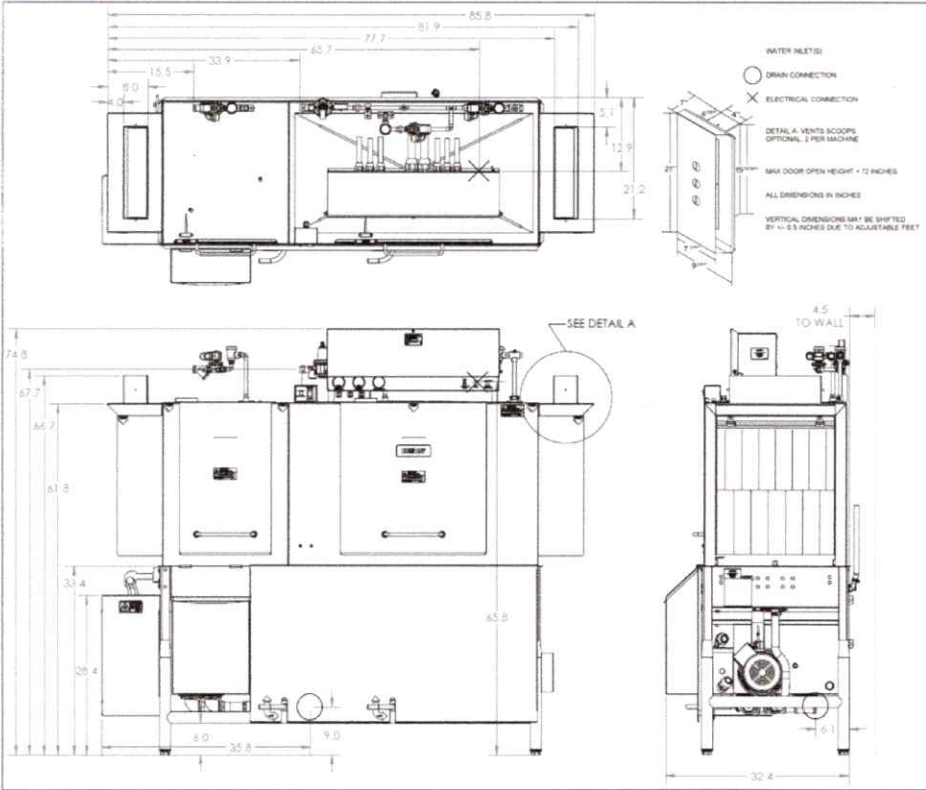
CHEMICAL SANITIZER RINSE

Minimum chlorine, ppm (low-temp) 50

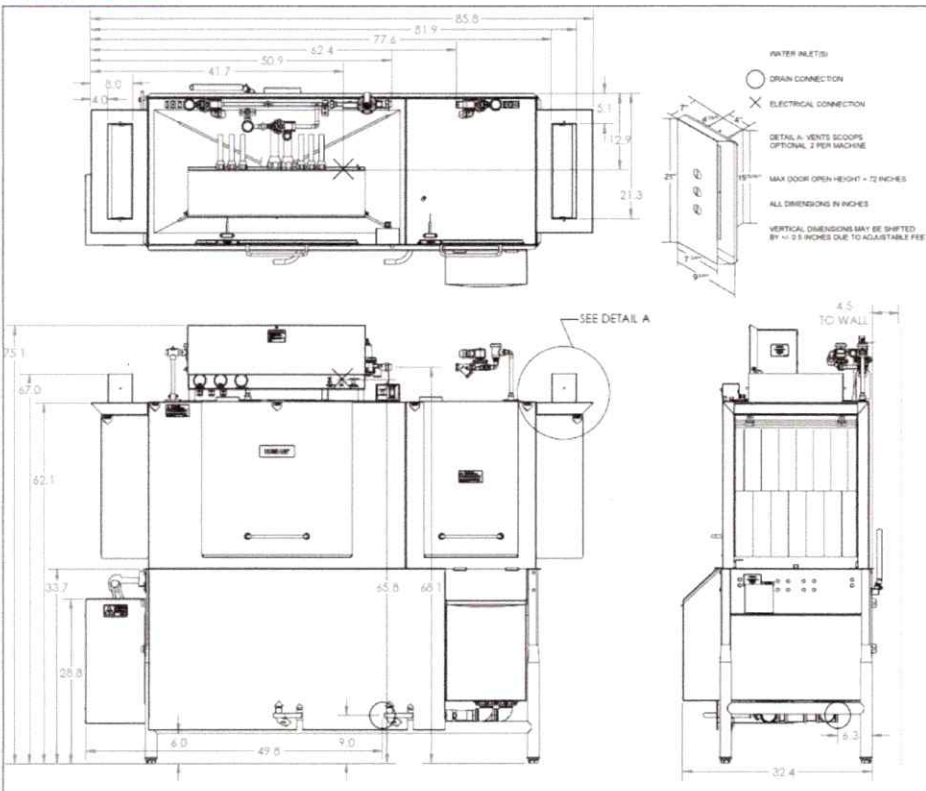
EC66HH-LW



LEFT TO RIGHT



RIGHT TO LEFT



SPECIFICATIONS

OPERATING CAPACITY

Racks per Hour 244

OPERATING TEMPERATURES

Wash (min)
low-temp 140° F
high-temp 160° F

Sanitizing Rinse (min)
low-temp 120° F
high-temp 180° F

WATER CONSUMPTION

Gallons per Rack 0.62

ELECTRICAL RATINGS

Wash Pump 2 hp
Pre-Wash Pump 1 hp
Drive Motor 1/4 hp

WASH CHAMBER

Internal Height 25"

WEIGHT

Machine Weight 888 lbs

UTILITY REQUIREMENTS ELECTRICAL

Voltage/Frequency/Phase:
208V/60Hz/3 Ph
Total Amperage 52.15 A
Typical Electrical Circuit 60 A

Voltage/Frequency/Phase:
230V/60Hz/3 Ph
Total Amperage 48.0 A
Typical Electrical Circuit 60 A

Voltage/Frequency/Phase:
460V/60Hz/3 Ph
Total Amperage 24.1 A
Typical Electrical Circuit 30 A

Voltage/Frequency/Phase:
208V/60Hz/1 Ph
Total Amperage 88.65 A
Typical Electrical Circuit 100 A

Voltage/Frequency/Phase:
230V/60Hz/1 Ph
Total Amperage 81.85 A
Typical Electrical Circuit 90 A

WATER

Waterline Size (min) 1/2"
Flow Pressure (required) 15-25 psi
Incoming Temp (min)
low-temp 120° F
high-temp 180° F
Incoming Temp (recommended)
low-temp 140° F
high-temp 180° F

DRAIN

Drainline Size 1 1/2"

VENT HOOD

Flow-Cubic Feet per Minute 600

CHEMICAL SANITIZER RINSE

Minimum chlorine, ppm (low-temp) 50