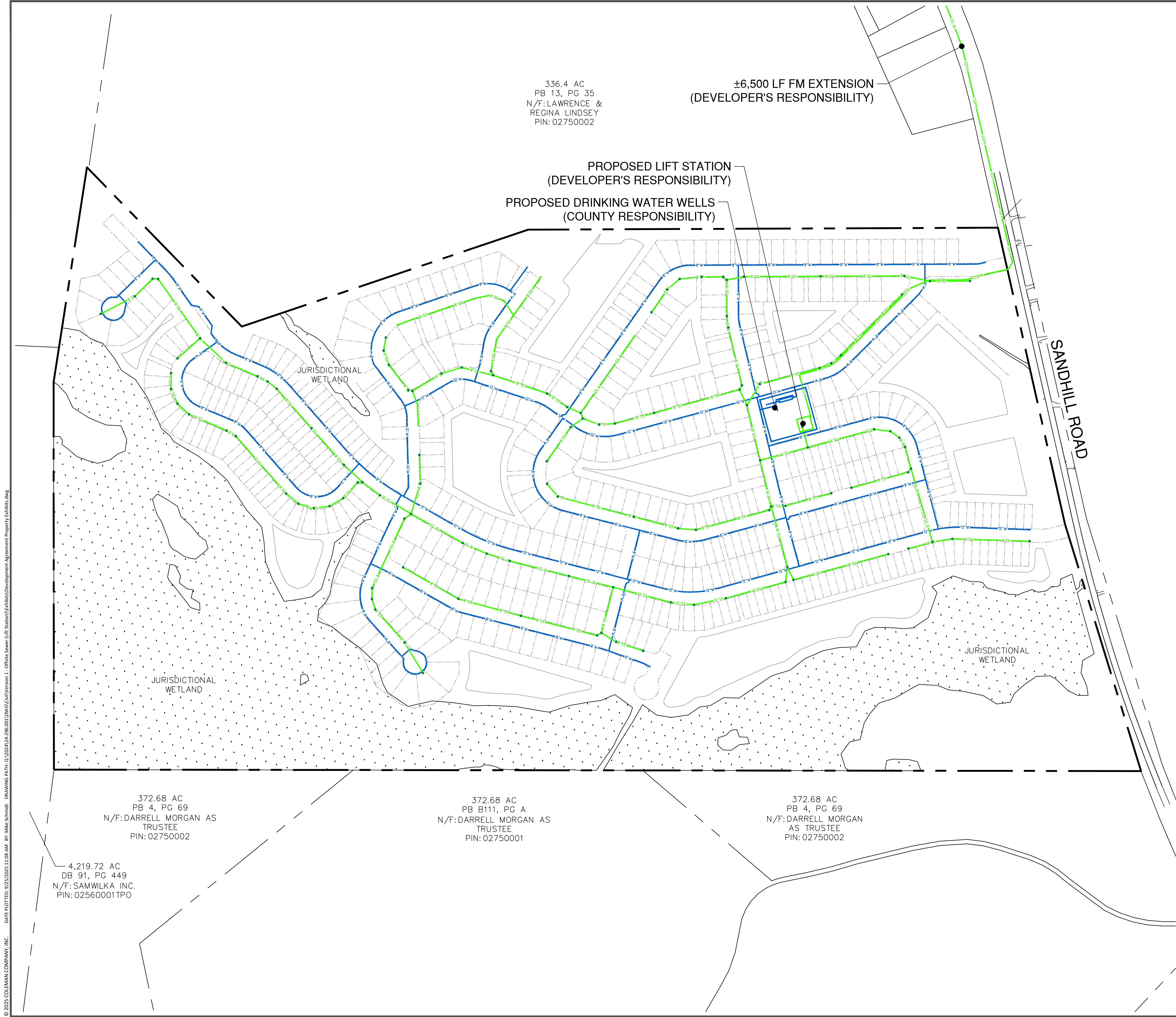


© 2025 COLEMAN COMPANY, INC. DATE PLOTTED: 9/25/2025 11:08 AM BY: Mike Schmidt DRAWING PATH: Q:\2024\24-296\001\DWG\Civil\Version 1 - Office Sewer (Lift Station)\Exhibit\Development Agreement Property Exhibit.dwg



UTILITY LEGEND

SSFM

FORCE MAIN

W

WATER MAIN

811

Know what's below.
Call before you dig.

SCALE: 1"=200'

0' 100' 200' 400'

N

North Arrow

COLEMAN COMPANY

ENGINEERS • SURVEYORS

Savannah, Georgia | (912) 200-3041 | CCI-SAV.COM

NOT FOR CONSTRUCTION

REVISIONS:

WATER & SEWER UTILITY AVAILABILITY AND CAPACITY

HINELY TRACT SUBDIVISION

LOCATED IN EFFINGHAM COUNTY, GEORGIA

PREPARED FOR GREENLAND DEVELOPERS

JOB NUMBER: 24-296

DATE:

DRAWN BY: MCS

CHECKED BY: CJP

SCALE: AS NOTED

EXHIBIT E

SHEET:

EX-E