



**STAGE FRONT**  
a better plan for AV

# Proposal for Audio-Visual Services

EFFINGHAM COUNTY RECREATION GYM ACOUSTICS

Chuck Cooper, Systems Consultant

912.721.5710 direct | 912.398.4644 cell

[chuck.cooper@stagefront.net](mailto:chuck.cooper@stagefront.net)





**STAGE FRONT**  
a better plan for AV

# Proposal for Services

Effingham County Board of Commissioners  
ATTN: Ms. Alison M. Bruton  
804 S Laurel St.  
Springfield, GA 31329  
912.754.2123  
abruton@effinghamcounty.org

11/7/2022

RE: Effingham County BOC | Recreation Gym Acoustics

Ms. Bruton,

Please accept the enclosed survey report and proposal for acoustical treatment design services for the Effingham County Recreation Gym Acoustics project. Thank you for the opportunity to present this to you and for considering Stage Front as a design partner.

The services, scope of work, and fees included here are based on our understanding of the desired acoustical dampening and our experience with similar projects.

Once you've reviewed the proposal please call with any questions or to discuss further.

Thank you again for your consideration.

Best Regards,

Chuck Cooper  
Systems Consultant

## PART I - REPORT & SCOPE

Acoustical Survey on 10-12-22  
Effingham County Recreation Complex  
808 GA-119  
Springfield, GA

Building is an approximate 112 ft wide x 157 ft long space with 28' high side walls. Wall surfaces are painted concrete block. Floor is wood basketball surface and ceiling deck is metal. The room is very reverberant with excessive loudness and poor speech clarity. The purpose of our site visit was to make acoustical measurements that would lead to a recommended solution and project budget to control the rooms excessive reverberation and loudness.

Measured reverberation times from 2 position several measurement averages is approximately 2.5 seconds.

Room reverberation time in seconds is a metric that is used to describe the acoustical property of a space. Rooms with long reverberation times (greater than 2 seconds) are categorized as live and often exhibit excessive loudness and poor speech clarity. Rooms with shorter reverberation times (less than 1.6 seconds) exhibit a quieter a "drier" sounder character and provide good speech clarity. Measurements are made at several frequency bands to characterize the tonal quality of a room.

The simple way to describe reverberation time is the time in seconds required for a loud slap sound to decay until it is inaudible. Acoustical measurement instruments apply a more rigorous measurement that allows verification and is repeatable. Physically room reverberation is controlled by the internal volume of the space, and the total surface area of sound absorbing materials. The rec center has a large interior volume, and has no current sound absorption. The room reverberation for the center is long (2.5 seconds) and provides a "Too live" ambience. The large parallel wall surfaces contribute to slap echo in the space.

Our calculations show that approximately 7,400 sq. ft of high sound absorption acoustical material is needed to calm the excessive reverberation. The ceiling is the largest available surface so most of the acoustical treatment will go there. Wall covering is needed to reduce side-to-side echoes that can also interfere with speech clarity. These side wall panels also contribute to the overall reduction of reverberation. These surface materials are needed to reduce the reverberation time below 1.6 seconds to make the room more comfortable for competition and other events.

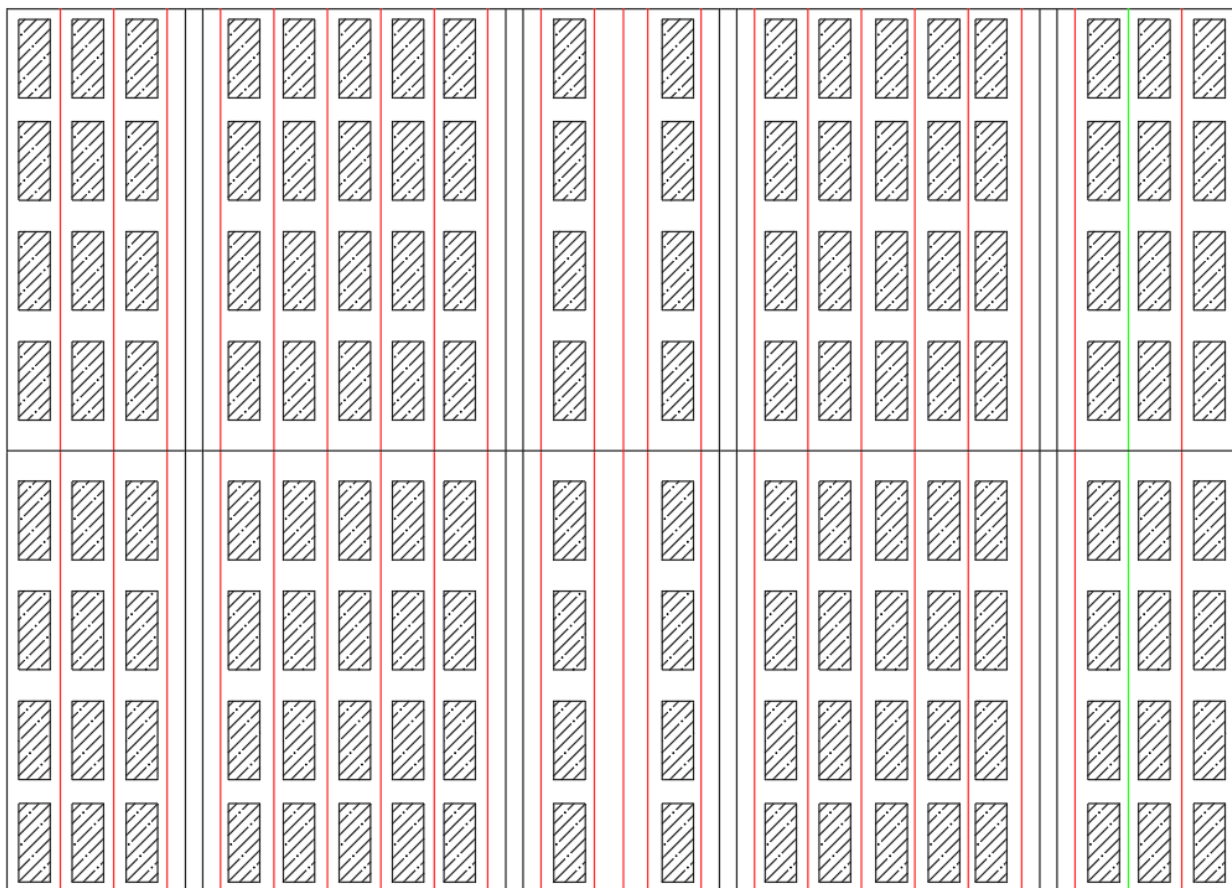
Recommended material for the ceiling is Lapendary style acoustical banners. These are large (4'x 10') banners made from vinyl covered fiberglass blankets. They are secured to the ceiling with a slight droop in the middle. The droop allows increased air space behind the panel and helps the overall sound absorption.  
<https://www.gordon-inc.com/products/creative-materials-for-acoustics/acoustical-banners/>

## PART I - SCOPE (CONT.)

Recommended material for the wall covering is Fabric covered acoustical wall panels. These are smaller (4'x8') fabric covered fiberglass panels attached to the walls 12' above floor. They mount with "Z" clips on the concrete surface. <https://avlonline.com/acoustech-high-impact-panels/>

The following figures show our recommended placement for these acoustical materials.

Figure 1: Reflected Ceiling showing Acoustical Banner panel placement.



## PART I - SCOPE (CONT.)

Figure 2: Side wall panels

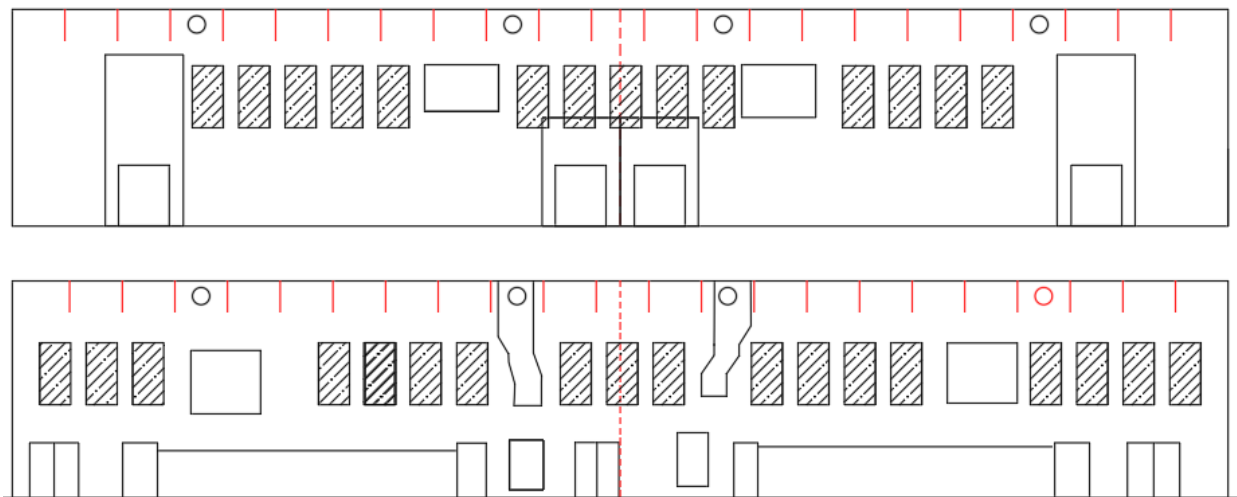
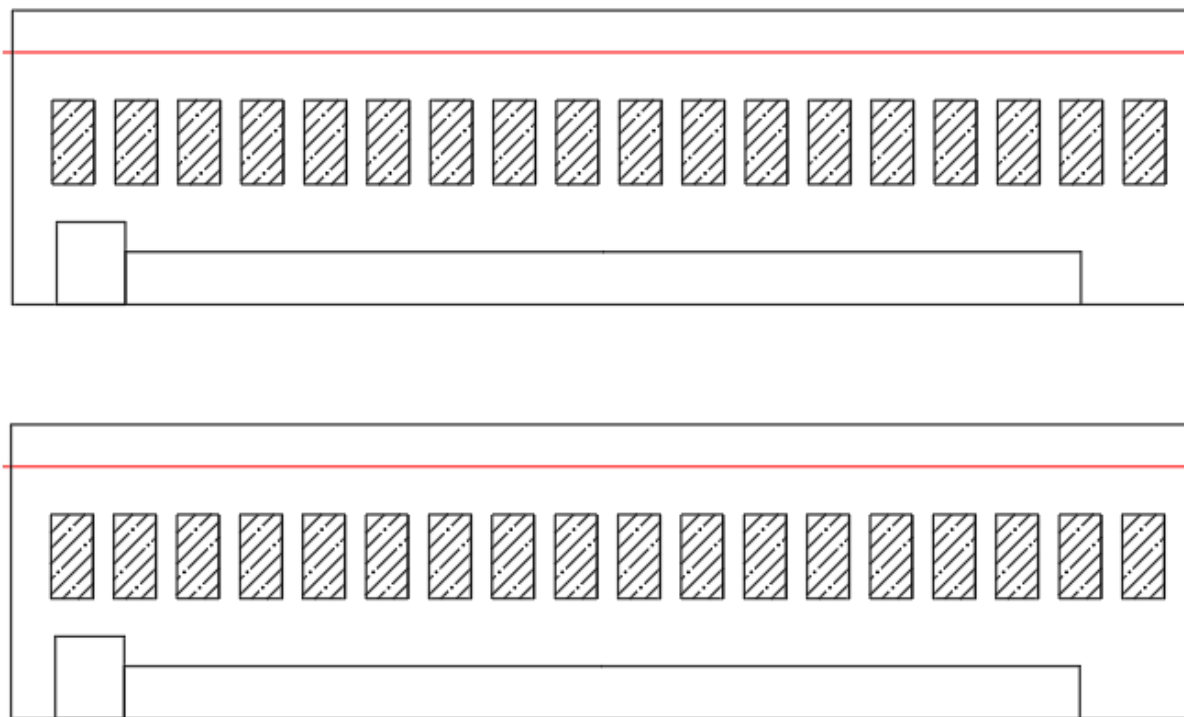


Figure 3: End wall panels



## PART II - PRICING & ACCEPTANCE

COMPONENT	PRICE
CEILING MOUNTED LAPENDARY ACOUSTIC PANELS + WALL MOUNTED FIBERGLASS ACOUSTIC PANELS (INSTALLED)	\$120,751
*Estimated 7% sales tax (EFFINGHAM, GA)	N/A
<b>Total System Investment</b>	<b>\$120,751</b>

## TERMS OF SERVICE

Please Note: Pricing includes equipment, shipping, delivery, programming, installation, turn-on, training, and one-year warranty. Necessary sales tax and permits are not included and if required are the responsibility of the Owner.

This proposal is based on current manufacturers' pricing and is good for 45 days. If, after acceptance for this proposal, we are notified of impending price increases we will arrange for early shipment of affected materials to a secured jobsite storage (by you) or to Stage Front warehouse, if you prefer. You will be responsible for secured storage at the jobsite of the materials, unless you opt for storage at the Stage Front warehouse, in which case we will insure the materials until delivery. In either case, you will be invoiced for materials delivered. If storage at a bonded warehouse is required, you will bear that cost.

Delivery: 12 – 16 weeks after receipt of order

FOB: Destination

Terms: 30% Deposit, 40% @ Receipt of Equipment, 20% @ Installation, Final 10% upon owner acceptance.

Prime Contractor agrees that if the cost of supplies/equipment used for a particular Task Order increase by more than 3% as a result of a change in federal law, including but not limited to any new or increased Federal excise tax or duty, Prime Contractor will request a price adjustment from the Customer and will pass the price adjustment to the Subcontractor. Subcontractor will provide Prime Contractor will all the necessary documentation to support the adjustment request to the Customer. If approved by the Customer, Subcontractor may increase the price of the applicable Task Order by a commensurate amount. If the request is rejected, Stage Front reserves the right to terminate the task order and invoice for labor and materials utilized through the termination.

**SUBMITTED BY:**



Chuck Cooper, 11/7/2022

**ACCEPTED BY:**

\_\_\_\_\_  
Name, Date

*Please print name and title below*

\_\_\_\_\_

## PART III – SERVICES

### INSTALLATION:

During the system installation phase, Stage Front will:

- Deliver equipment to jobsite.
- Furnish, install, and terminate all equipment in this proposal, as well as clearly and permanently label field wiring.
- Install the sound panels and rigging.
- Install, test, and trim all rigging hardware.
- Identify all ceiling aperture locations.
- Remove all trash and debris related with Stage Front work.

### TURN-ON:

At system turn-on, Stage Front will:

- Test, adjust, and demonstrate all systems
- Provide training on the operation and maintenance of the system

### MANUAL:

Stage Front will supply electronic copies of instruction/ maintenance manuals for the equipment.

### WARRANTY:

Stage Front warrants this installation to the original purchaser to be free from defects in material and workmanship under normal use during the warranty period.

- Materials: Products will be repaired or replaced, at Stage Front's option, without charge for a period of 365 days after first beneficial use or completion of installation, whichever comes first.
- Labor: Products will be repaired or replaced, at Stage Front's, without charge for a period of 90 days after first beneficial use or completion of installation, whichever comes first.



# Our Experience

Your one-source provider for integrated audio-visual solutions for presentation, collaboration, and Unified Communications systems.

Since 1978, Stage Front has designed and installed technical systems that help better educate, communicate, and entertain.

Our demonstrated strengths in technical design, defined process, and financial stability enable us to consistently deliver projects on time and within budget.

Our areas of expertise include Corporate Enterprise, Higher Education, Dental + Medical Education, as well as Auditoriums + Theatres.

Experience the Stage Front difference.

# Our Services

## DESIGN

- Consultation
- Needs Analysis
- Program Development
- BIM Modeling
- EASE Modeling
- Acoustical Analysis
- User Interface Design
- Bid Administration
- Construction Administration

## INTEGRATION

- Project Management
- Pre-Fabrication
- Systems Installation
- Alignment + Final Adjustment
- Programming
- Proof of Performance
- User Training
- Quality Control

## SUPPORT

- Warranty Support
- Preventative Maintenance
- Complete Maintenance
- On-Site Sustaining Support
- Remote Monitoring + Support
- Systems Training
- Critical Inventory Management
- Documentation Control

# Our Process

1

## UNDERSTANDING THE CLIENT

Interviews, Needs Analysis, Long-Term Client Goals

2

## PROGRAM DEVELOPMENT

Scope, Budget, Timeline

3

## ENGINEERING + CONSTRUCTION DOCS

Published Infrastructure, Complete Design Package

4

## PREFABRICATION + PROGRAMMING

Build + Test Systems In-House, Control Systems Programming

5

## SYSTEMS INTEGRATION

Field Services + Systems Delivery

6

## COMMISSIONING + QUALITY ASSURANCE

Test + Tune, Client Approval

7

## SUSTAINING SUPPORT

Full Parts + Labor Warranty, Preventative Maintenance, 24/7 Support



# Our Projects

## UNIVERSITY OF TEXAS HEALTH SCIENCES, HOUSTON, TX



Stage Front provided advanced systems for this new \$155M education building. The latest technologies for teaching and communication are employed in various spaces throughout the building including labs, lecture halls, distance learning rooms and conference rooms. Design was completed and delivered throughout the course of a full calendar year. In addition to the AV design, provides support to the University of Texas under a three year Complete Maintenance Service Agreement.

## OREGON HEALTH SCIENCES UNIVERSITY, PORTLAND, OR



OHSU hired Stage Front to design-build a complete audio-visual system in their pre-clinical simulation lab, employing our multimedia teaching systems, InVision Cam, lecture capture, presentation and program system, and a custom control system with an intuitive user interface. To assure the system delivers the expected function in the future, OHSU added our Comprehensive Maintenance Service Program.



# Our Projects (cont.)

## AUGUSTA UNIVERSITY, WARM SPRINGS, GA



Stage Front was hired by Augusta University to design an audio-visual solution as part of the renovation of the historical Warm Springs Rehabilitation Hospital. The system provides a link between the Warm Springs Rehabilitation Hospital and the Medical Center Campus in Augusta for the Doctors in residency. Our system provides conferencing, collaboration, and teaching technologies to bring Warm Springs up to date.

## WESTMINSTER SCHOOLS, ATLANTA, GA



Stage Front recently completed the AV systems design for phase one of Westminster's multi-phased campus expansion and renovation. The new and renovated academic spaces include spacious classrooms, a community plaza, small and large conference rooms, and the Catalyst STEAM Lab, which will promote hands-on learning, integrated studies, and innovative pursuits of all kinds. Stage Front's AV solutions for the Atlanta-based private school will promote creativity and collaboration designed for connection, community, and leadership.



**STAGE FRONT**  
a better plan for AV

Thank You for  
the Opportunity.

## QUESTIONS ?

Chuck Cooper, Systems Consultant  
912.721.5710 direct | 912.398.4644 cell  
[chuck.cooper@stagefront.net](mailto:chuck.cooper@stagefront.net)

