

LEGEND

- CONC. MONUMENT FOUND
- GUY WIRE
- IRON PIPE FOUND
- IRON REBAR FOUND
- ⊕ UNDERGROUND UTILITY LINE MARKER
- ☆ LIGHT POLE
- ⊥ POWER POLE
- ⊥ SIGN
- ⊕ SANITARY MANHOLE
- ⊕ TELEPHONE BOX
- ⊕ WATER METER
- COMPUTED POINT (NO MONUMENT)

HATCH PATTERN LEGEND

- [Hatched Pattern] ASPHALT PAVEMENT
- [Hatched Pattern] CONCRETE PAVEMENT
- [Hatched Pattern] GRAVEL/EARTH DRIVE

LINE-TYPE LEGEND (UTILITIES)

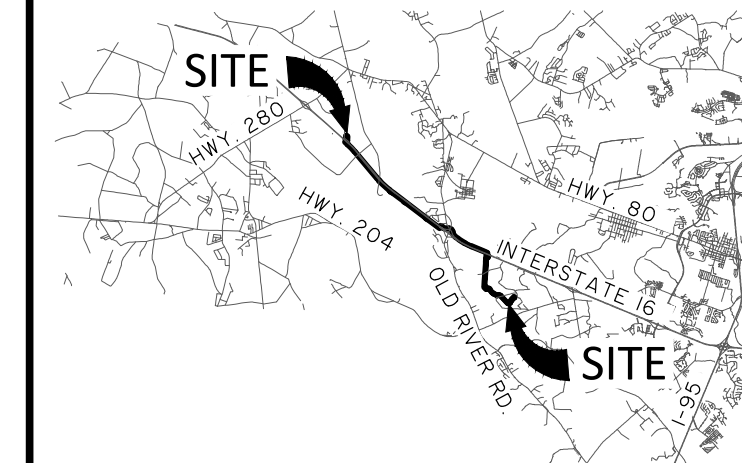
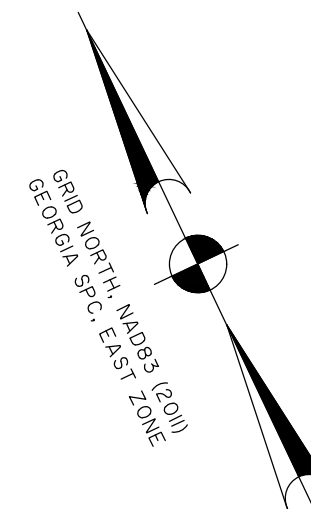
- UTL — UTL — UNDERGROUND TELEPHONE LINE
- GAS — GAS — UNDERGROUND NATURAL GAS LINE
- OHP — OHP — OVERHEAD POWER LINE
- UGP — UGP — UNDERGROUND POWER LINE
- FM — FM — SANITARY SEWER FORCE MAIN
- SS — SS — SANITARY SEWER LINE
- W — W — STORM DRAINAGE LINE
- W — W — WATER DISTRIBUTION LINE

LINE-TYPE LEGEND (BOUNDARIES)

- ADJOINER PROPERTY LINE

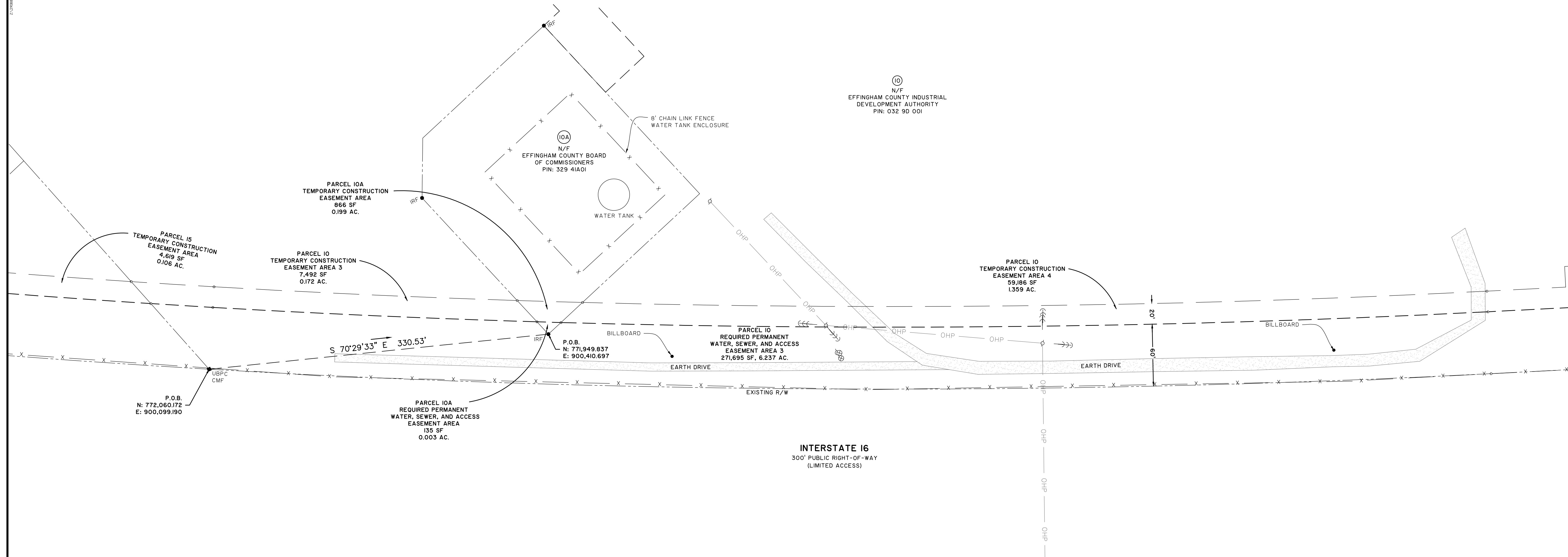
LINE-TYPE LEGEND (PLANIMETRICS)

- [Symbol] WOODS LINE
- [Symbol] RAIL ROAD TRACKS
- [Symbol] GUARD RAIL
- [Symbol] DITCH/CREEK CENTER-LINE
- [Symbol] WIRE FENCE



VICINITY MAP not to scale

This document and all reproducible copies of this document are the property of Thomas & Hutton. Reproduction of this document is not permitted without written consent of Thomas & Hutton unless this document becomes a matter of public record. ALTERATIONS TO THIS DOCUMENT ARE NOT PERMITTED.



INTERSTATE 16
300' PUBLIC RIGHT-OF-WAY
(LIMITED ACCESS)

ACREAGE TABLE - REQUIRED PERMANENT WATER, SEWER, AND ACCESS EASEMENT

OWNER	PARCEL #	SQUARE FOOTAGE	ACRES
EFFINGHAM COUNTY INDUSTRIAL DEVELOPMENT AUTHORITY	PARCEL #10	341,428 SF	7.838 AC.
EFFINGHAM COUNTY BOARD OF COMMISSIONERS	PARCEL #10A	135 SF	0.003 AC.
EFFINGHAM COUNTY INDUSTRIAL DEVELOPMENT AUTHORITY	PARCEL #11	40,562 SF	0.931 AC.
EFFINGHAM COUNTY INDUSTRIAL DEVELOPMENT AUTHORITY	PARCEL #12	22,837 SF	0.524 AC.
EFFINGHAM COUNTY INDUSTRIAL DEVELOPMENT AUTHORITY	PARCEL #13	21,432 SF	0.492 AC.
EFFINGHAM COUNTY INDUSTRIAL DEVELOPMENT AUTHORITY	PARCEL #14	20,284 SF	0.465 AC.
EFFINGHAM COUNTY INDUSTRIAL DEVELOPMENT AUTHORITY	PARCEL #15	18,471 SF	0.424 AC.

ACREAGE TABLE - TEMPORARY CONSTRUCTION EASEMENT

OWNER	PARCEL #	SQUARE FOOTAGE	ACRES
EFFINGHAM COUNTY INDUSTRIAL DEVELOPMENT AUTHORITY	PARCEL #10	100,934 SF	2.317 AC.
EFFINGHAM COUNTY BOARD OF COMMISSIONERS	PARCEL #10A	866 SF	0.199 AC.
EFFINGHAM COUNTY INDUSTRIAL DEVELOPMENT AUTHORITY	PARCEL #11	12,395 SF	0.285 AC.
EFFINGHAM COUNTY INDUSTRIAL DEVELOPMENT AUTHORITY	PARCEL #12	7,679 SF	0.176 AC.
EFFINGHAM COUNTY INDUSTRIAL DEVELOPMENT AUTHORITY	PARCEL #13	7,164 SF	0.164 AC.
EFFINGHAM COUNTY INDUSTRIAL DEVELOPMENT AUTHORITY	PARCEL #14	6,755 SF	0.155 AC.
EFFINGHAM COUNTY INDUSTRIAL DEVELOPMENT AUTHORITY	PARCEL #15	4,619 SF	0.106 AC.

EXHIBIT A
BRYAN COUNTY
I-16 REGIONAL SEWER
IMPROVEMENTS
PROJECT

EFFINGHAM COUNTY, GEORGIA

prepared for
BRYAN COUNTY BOARD
OF COMMISSIONERS



50 Park of Commerce Way
Savannah, GA 31405 • 912.234.5300
www.thomasandhutton.com

