

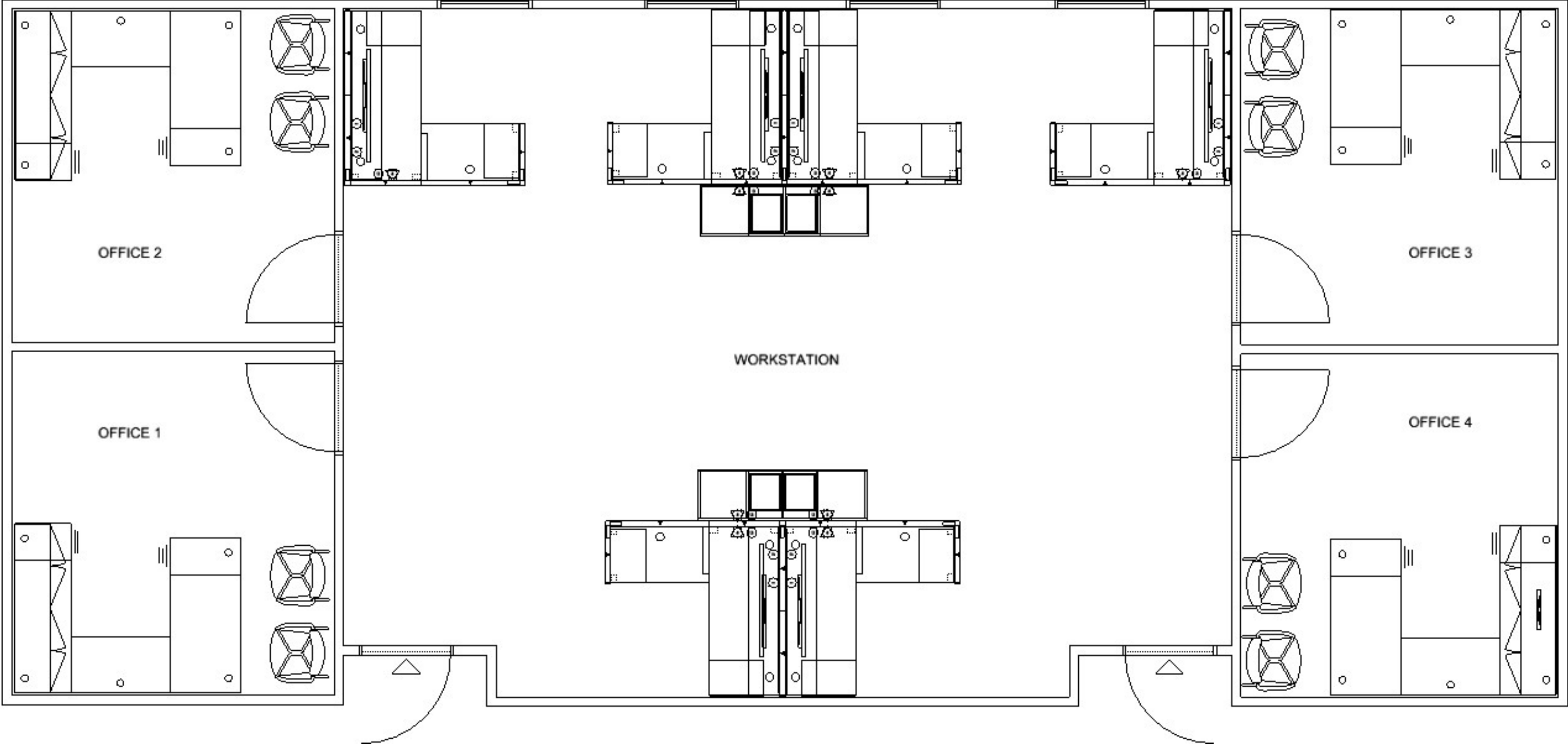
FURNITURE PROPOSAL  
prepared for:

# EFFINGHAM COUNTY

IT DEPARTMENT

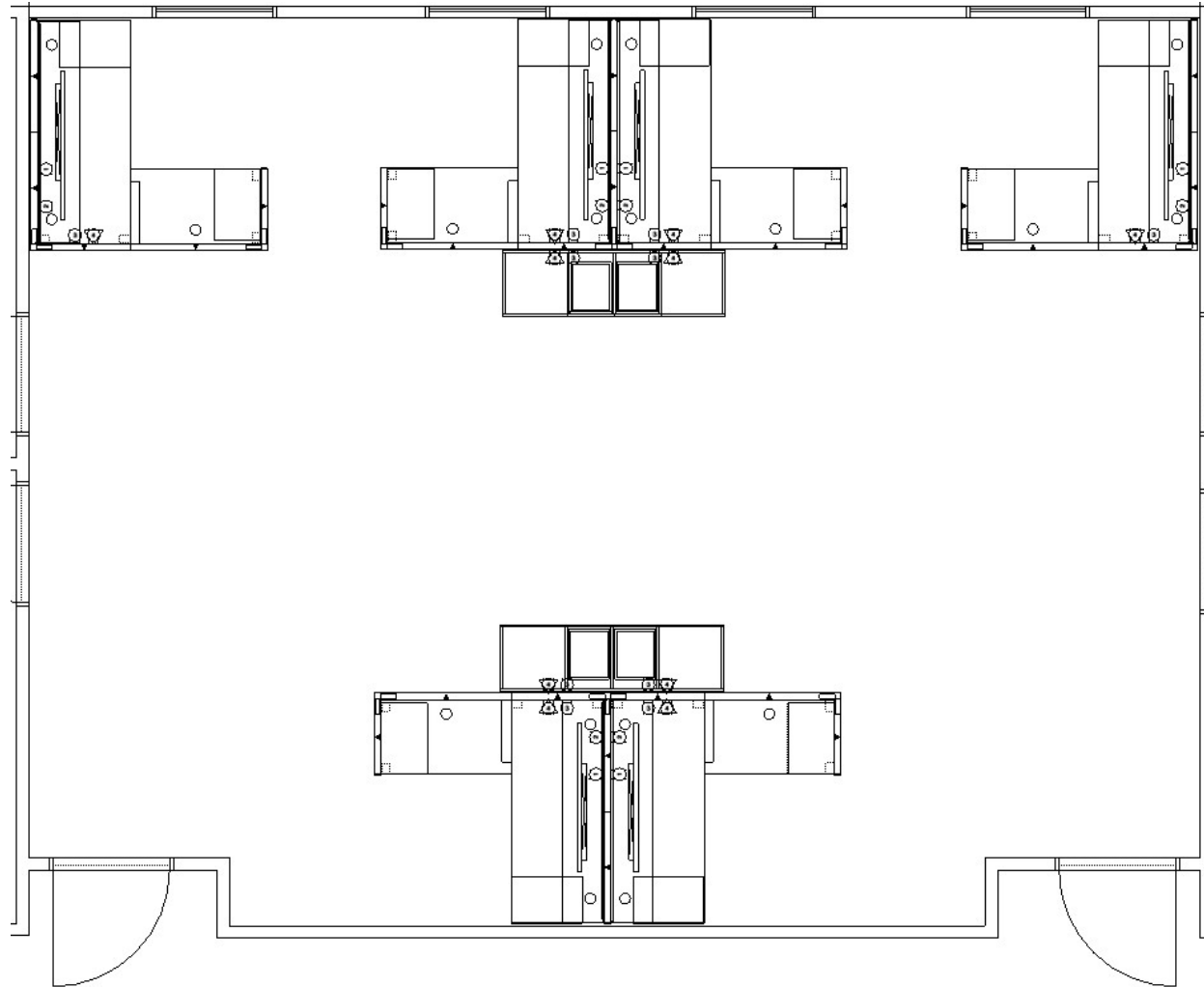
3.5.25

EFFINGHAM CO. IT DEPT.  
FURNITURE PLAN



EFFINGHAM CO. IT DEPT.

## WORKSTATION LAYOUT OPTION 2



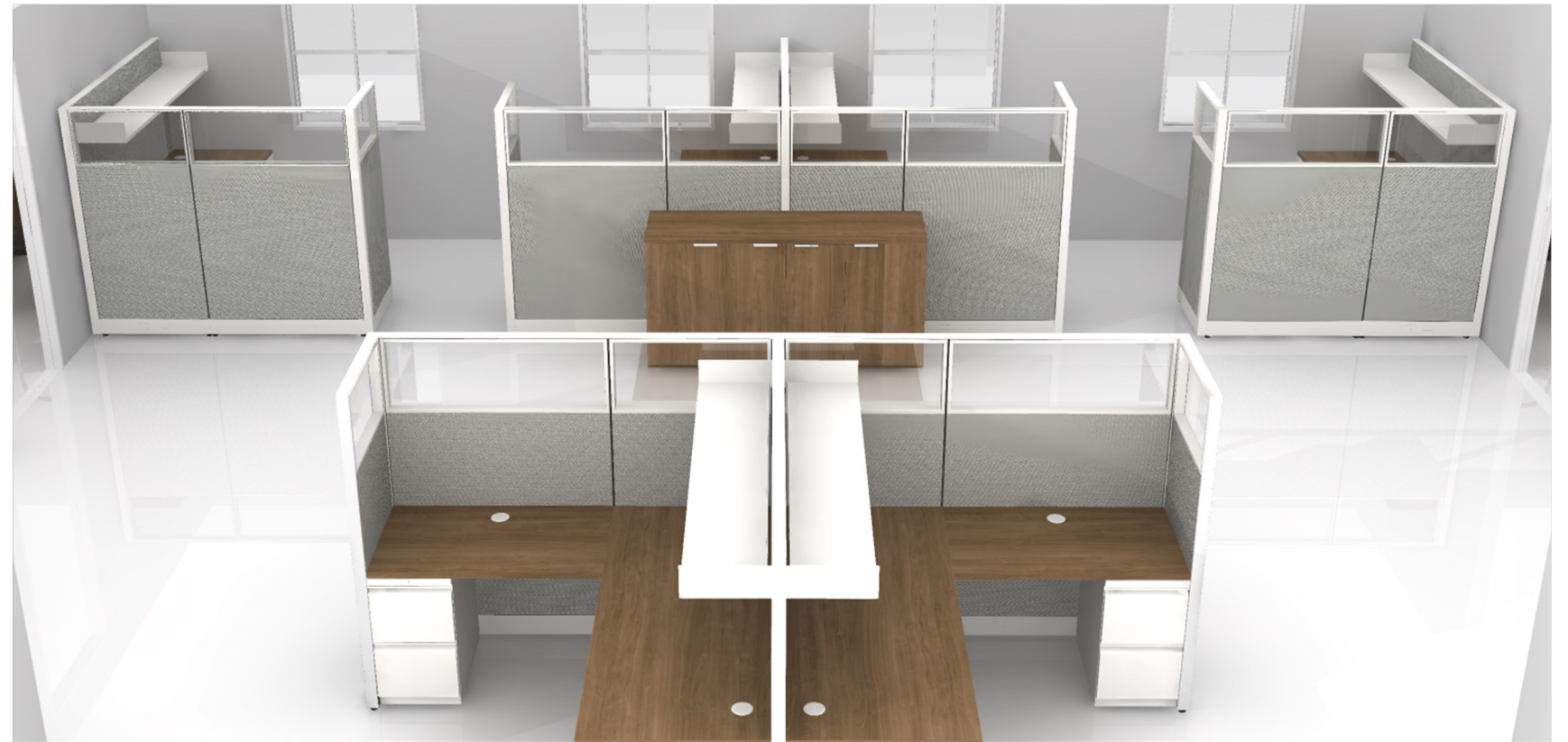
HON Accelerate Workstations

72" x 30" desk with 24" x 42" return.

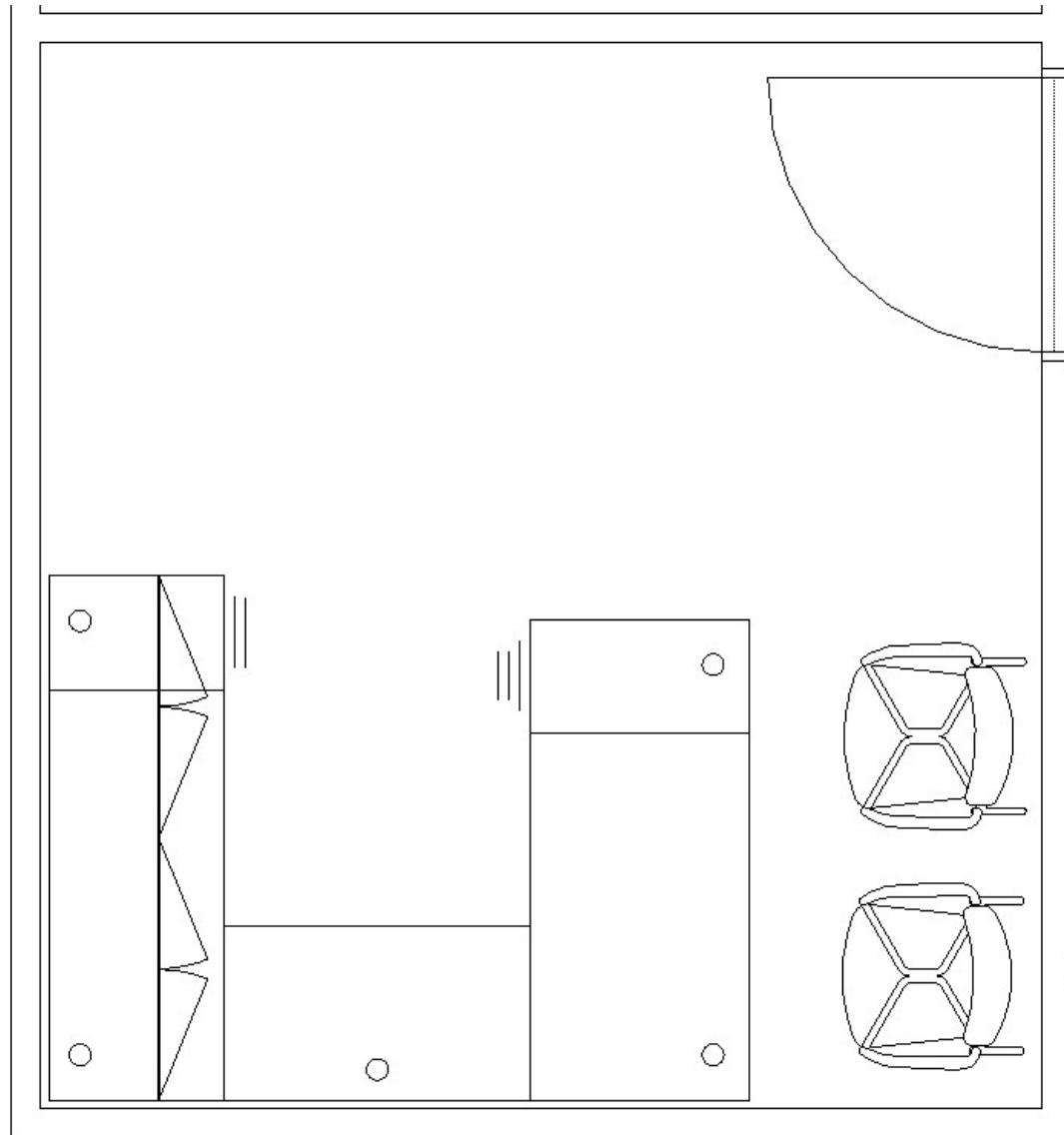
65" high panels along the spine with open shelves.

50" high exterior panels with glass.

20" x 72" buffet credenza 36"H



# EFFINGHAM CO. IT DEPT. OFFICES



HON Caseloads

66" x 30" desk with 24" x 42" bridge, 24" x 72"

65" high panels along the spine with open shelves.

Hutch with tackboard

Qty. 2 SitOnIt Freelance guest chairs







# MASON'S

a CWC Company

Office furniture + Interior design | est.1892

## MillerKnoll

**CERTIFIED DEALER**

If you have any questions or concerns please contact

Lee Rambo

[leerambo@mason-inc.com](mailto:leerambo@mason-inc.com)

912.232.4192

2301 rowland avenue

savannah, ga 31404

p 912.232.4192

f 912.525.1981