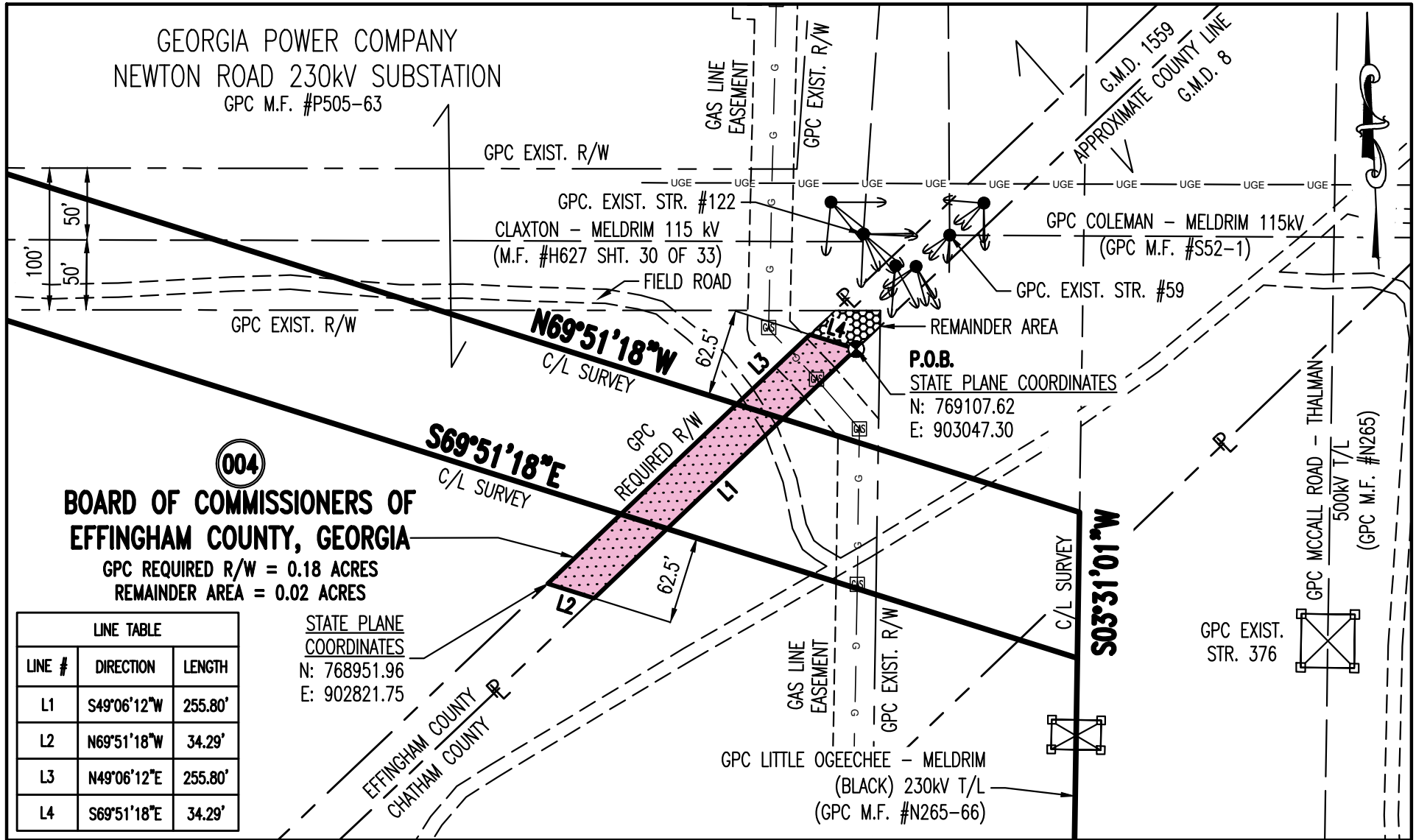


GEORGIA POWER COMPANY
 NEWTON ROAD 230kV SUBSTATION
 GPC M.F. #P505-63



BOARD OF COMMISSIONERS OF EFFINGHAM COUNTY, GEORGIA
 GPC REQUIRED R/W = 0.18 ACRES
 REMAINDER AREA = 0.02 ACRES

LINE TABLE		
LINE #	DIRECTION	LENGTH
L1	S49°06'12"W	255.80'
L2	N69°51'18"W	34.29'
L3	N49°06'12"E	255.80'
L4	S69°51'18"E	34.29'

STATE PLANE COORDINATES
 N: 768951.96
 E: 902821.75

REFERENCE: GPC M.F. #P505-80, SHT. 21 OF 21

GEORGIA POWER COMPANY - LAND ENGINEERING

COORDINATE DATUM: NAD83(2011), GEORGIA STATE PLANE EAST ZONE

SYMBOL LEGEND

- IRON PIN SET
- EXISTING POLE
- ⊙ IRON PIN FOUND
- ⊗ POINT OF BEGINNING (POB)
- ⊠ ROW MARKER
- POC= POINT OF COMMENCEMENT
- ▨ GPC R/W MONUMENT
- ▨ GPC REQUIRED R/W
- ▨ QUITCLAIMED R/W
- ⊗ REMAINDER AREA

PARCEL No. 004

**LITTLE OGEECHEE - MELDRIM
 230kV TRANSMISSION LINE**

CROSSING THE PROPERTY OF
BOARD OF COMMISSIONERS OF EFFINGHAM COUNTY, GEORGIA
 G.M.D. 1559, EFFINGHAM COUNTY, GEORGIA

DATE: 03/21/2024
 SCALE: 1" = 100'
 DRAWN BY: SNA/DAR

EXHIBIT A

SHT 01 OF 01