

MEMORANDUM

TO: Danielle Carver, Slade Helmly, and David Scott

FROM: Thomas Keane and Robert Armstrong

RE: CEM Gym Addition - Proposed Change Order #1

DATE: July 12, 2024

CC: Bryan Rountree, Kathy Yawn, and John Lavender

Attached is a proposed change order from Lavender to tie in the sewer on the REC wing of the addition to the manhole near the batting cages. The existing sewer main at the rear of the REC wing is much deeper (16 ft) than was indicated by the survey. This discrepancy prohibits a simple wye connection between the lateral exiting the REC wing and the sewer main. Our civil engineer has approved Lavender's proposal to instead run a 6" lateral with cleanouts parallel to the main (offset by at least 5') until it discharges at the manhole near the batting cages. We have reviewed this change order and recommend its approval.

July 11, 2024

Thomas Keane
Hussey Gay Bell
329 Commercial Drive, Suite 200
Savannah, GA 31406

**RE: Effingham Recreation Complex
PCO #1**

Description: Sewer Tap tie-in at manhole near batting cages per RFI #7.

I. Subcontract	
Cartee Construction	\$13,750.00
7.5% on Subcontract:	<u>\$ 1,031.00</u>
Subtotal:	\$14,781.00
1% Bond:	<u>\$ 148.00</u>
Total This Change:	\$14,929.00

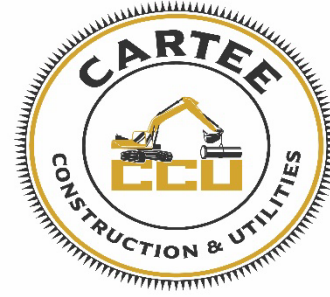
If you have any questions, please don't hesitate to contact me.

Sincerely,

Bryan Rountree

Bryan Rountree
Project Manager

Cartee Construction & Utilities
376 Metts Road
Statesboro, GA 30461
Phone: 912-682-9937



July 9, 2024

Re: Effingham Gym Expansion 6" Sewer Lateral in Springfield, GA

Dear Sir or Madam:

We propose the following for Utility installation to include the following:

- Installation of 6" Sewer Lateral

Our price for performing this work is stated below:

- Core to Manhole (6-8') deep
- 230' of 6" Sanitary Sewer
- 3- 6" Cleanouts
- Total: \$13,750.00

- Hopefully the sewer will go over the storm drainage on site.

Please review the following notes:

1. Cartee Construction cannot be held responsible for unforeseen conditions.
2. No permits, fees or any kind of testing included.
3. No removal of unsuitable soil and no compaction test.
4. No Layouts/ as-builts included.
5. No cut and patch of asphalt included.
6. No removal or relocating existing utilities.
7. Quote to expire in 30 days.

Sincerely,

Clay Cartee
Project Manager/ Estimator

REQUEST FOR INTERPRETATION

Project: Effingham CO. Gym Addition

RFI #: 007

To: Hussey Gay Bell
Robert Armstrong/Thomas Keane

From: Lavender & Associates, Inc.

Date: 6/10/2024

Re: Sewer

A / E Project # : _____

Contract For: Effingham Co. Gym Addi

Specification Section: _____

Drawing Reference: _____

Detail Reference: _____

Request:

Please see proposed sewer tie in location on REC wing

singed by: Bryan Rountree

cc:

Matt Rowe

Response:

It is our preference that the 6" sewer lateral be tied directly to the sewer main via a wye/sweep, however, it appears that the gravity sewer line here is much deeper than indicated by the upstream invert on the survey (appears to only show invert of lateral coming in - labeled as "invert out", which would only be about 7' deep, rather than bottom invert). In such case that the sewer main is approx. 15' deep in this location close to the building, we are not opposed to running a 6" lateral with cleanouts parallel to the main (offset at least 5') down to the manhole near the batting cages. We recommend discussing this with the local authorities to make sure that there are no other future developments planned in this area or that there are no other objections from them.

Attachments

Response From: _____

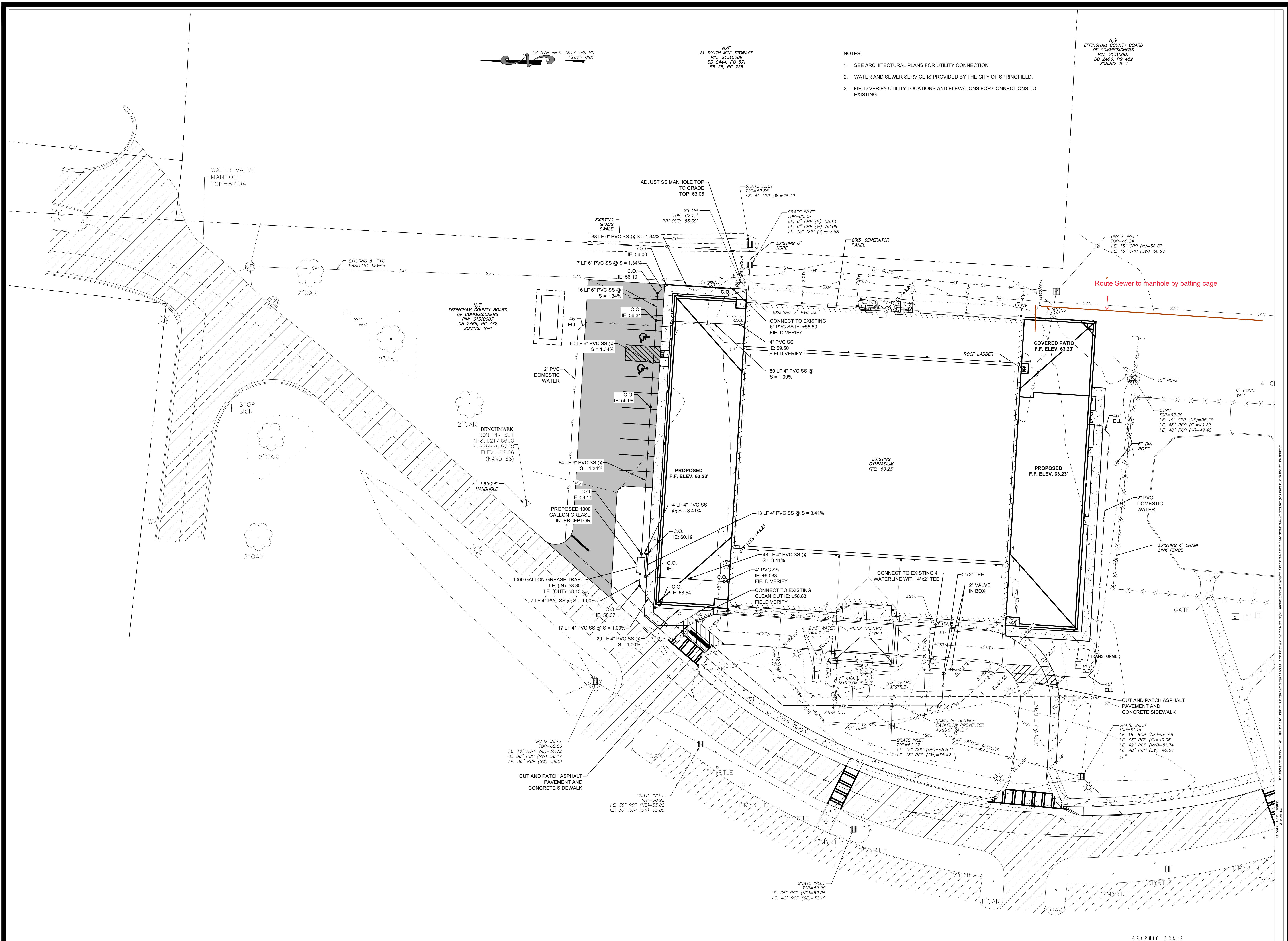
Today's Date: _____

Received: _____

Date Returned: _____

Signed By: _____

Date: _____

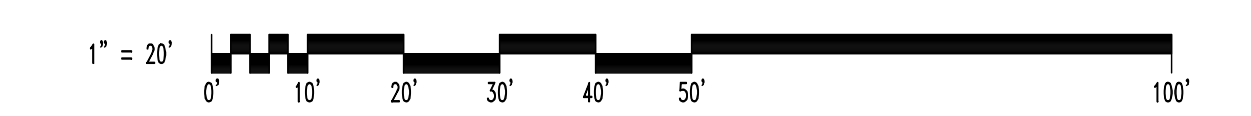


3 UTILITY PLAN
1" = 20'-0"

GEORGIA
REGISTERED
PROFESSIONAL
ENGINEER
SPECIAL CHASE HOLLOWAY

CS COASTLINE CONSULTING SERVICES, INC.
138 CANAL STREET, UNIT 307
POOLEY, GEORGIA 31322
PH: (912) 336-8550
FX: (912) 336-8568

- CIVIL SITE SERVICES
- TRANSPORTATION SERVICES
- MARINE SERVICES
- ENVIRONMENTAL SERVICES



**NOTE: ALL ELEVATIONS ARE NAVD 1988.
HORIZONTAL DATUM: GA EAST NAD83**

PERMIT SUBMITTAL

- NOTES:
- SEE ARCHITECTURAL PLANS FOR UTILITY CONNECTION.
 - WATER AND SEWER SERVICE IS PROVIDED BY THE CITY OF SPRINGFIELD.
 - FIELD VERIFY UTILITY LOCATIONS AND ELEVATIONS FOR CONNECTIONS TO EXISTING.

N/E
EFFINGHAM COUNTY BOARD
OF COMMISSIONERS
P.W. 51310007
DB 2466, PG 482
ZONING: R-1

N/E
EFFINGHAM COUNTY BOARD
OF COMMISSIONERS
P.W. 51310007
DB 2466, PG 482
ZONING: R-1

HUSSEY GAY BELL
— Established 1958 —

DESIGNED	DRAWN	CHECKED
RA	TK	RA
DATE: 12/11/2023		
JOB NO. 2224802 03		

EFFINGHAM COUNTY GYMNASIUM ADDITION
CLARENCE E. MORGAN RECREATION COMPLEX
1750 GA. HWY 21 S. SPRINGFIELD, GEORGIA 31329

DRAWING NUMBER

C2.02

UTILITY PLAN