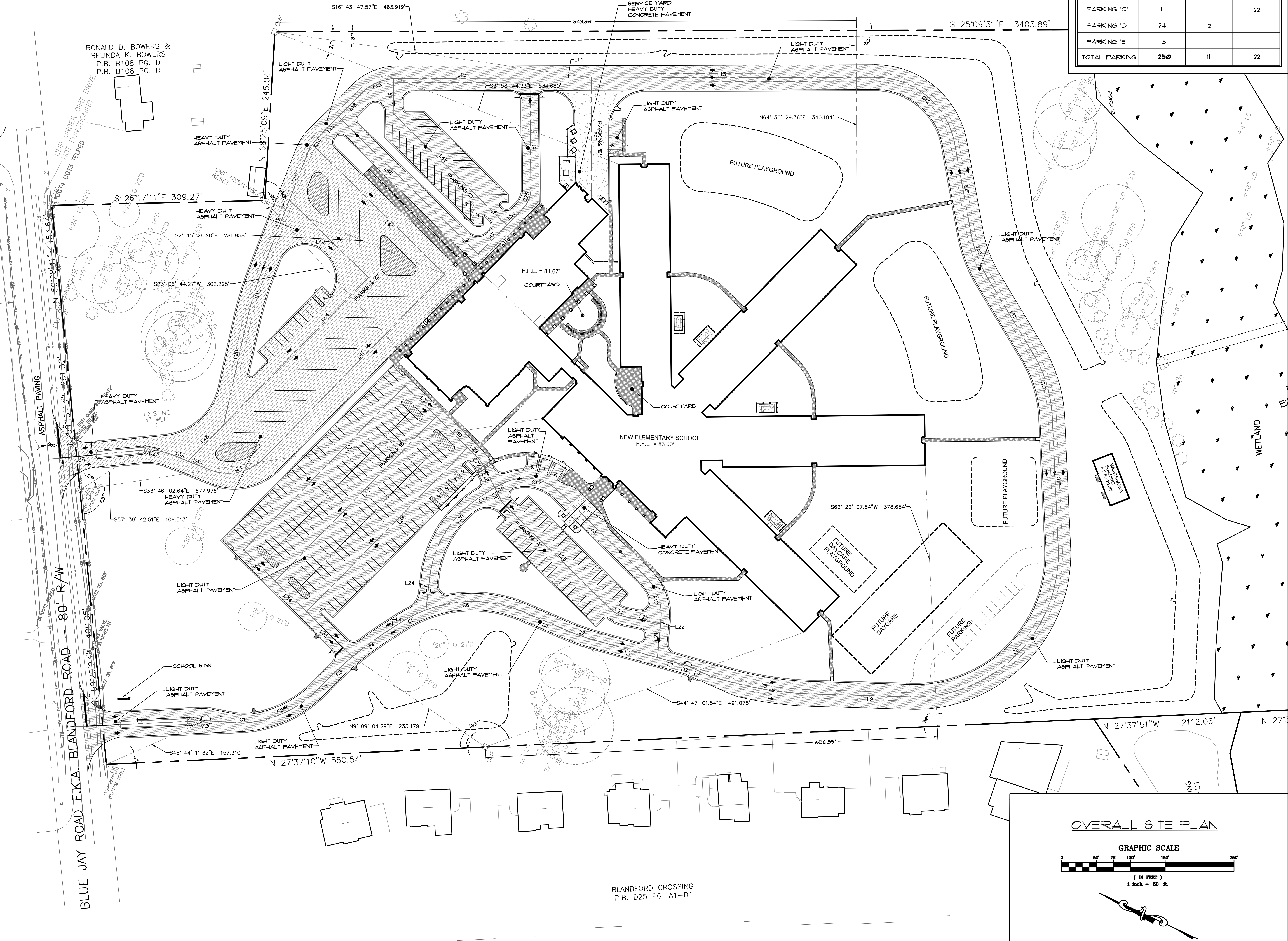


NOTE:
SEE SHEET C2.3 FOR LINE AND CURVE DATA.

PARKING LOT TABLE:

AREA	# SPACES	HC SPACES	BUS SPACES
PARKING 'A'	40	3	
PARKING 'B'	172	4	
PARKING 'C'	11	1	22
PARKING 'D'	24	2	
PARKING 'E'	3	1	
TOTAL PARKING	250	11	22



BLUE JAY ELEMENTARY SCHOOL - PHASE I
EFFINGHAM COUNTY BOARD OF EDUCATION
SCHOOL CODE: 651-0383
GUYTON
JAMES W. BUCKLEY & ASSOCIATES INC. - ARCHITECTS, CIVIL ENGINEERS
SWANSBORO, ALBANY, ROME, AND SAVANNAH, GEORGIA

OVERALL SITE PLAN

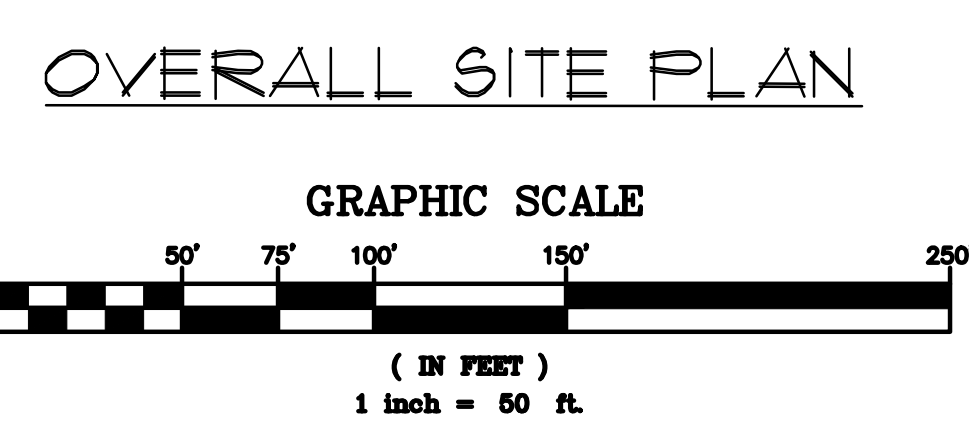
WARNING: CONTRACTORS, SUBMITTALS, VENDOR AND SUPPLIER are advised that the contract documents consist of the contract, specifications, drawings, and addendums. It is the contractor's responsibility to verify that the drawings and specifications are correct and complete. The contractor shall be responsible for obtaining all necessary permits and approvals. The contractor shall be responsible for obtaining all necessary insurance and bonding. The contractor shall be responsible for obtaining all necessary licenses and registrations. The contractor shall be responsible for obtaining all necessary permits and approvals. The contractor shall be responsible for obtaining all necessary insurance and bonding. The contractor shall be responsible for obtaining all necessary licenses and registrations.

811
Know what's below.
Call before you dig.

ISSUED FOR:
BID SET
ADDENDUM #2
5/21/2024

GOG
DRAWN BY
CHECKER
CROSSCHECKED BY
WDM
APPROVED BY
04-19-2024
23-035
PROJECT NO.

SHEET NUMBER
C2.0



BLANDFORD CROSSING
P.B. D25 PG. A1-D1