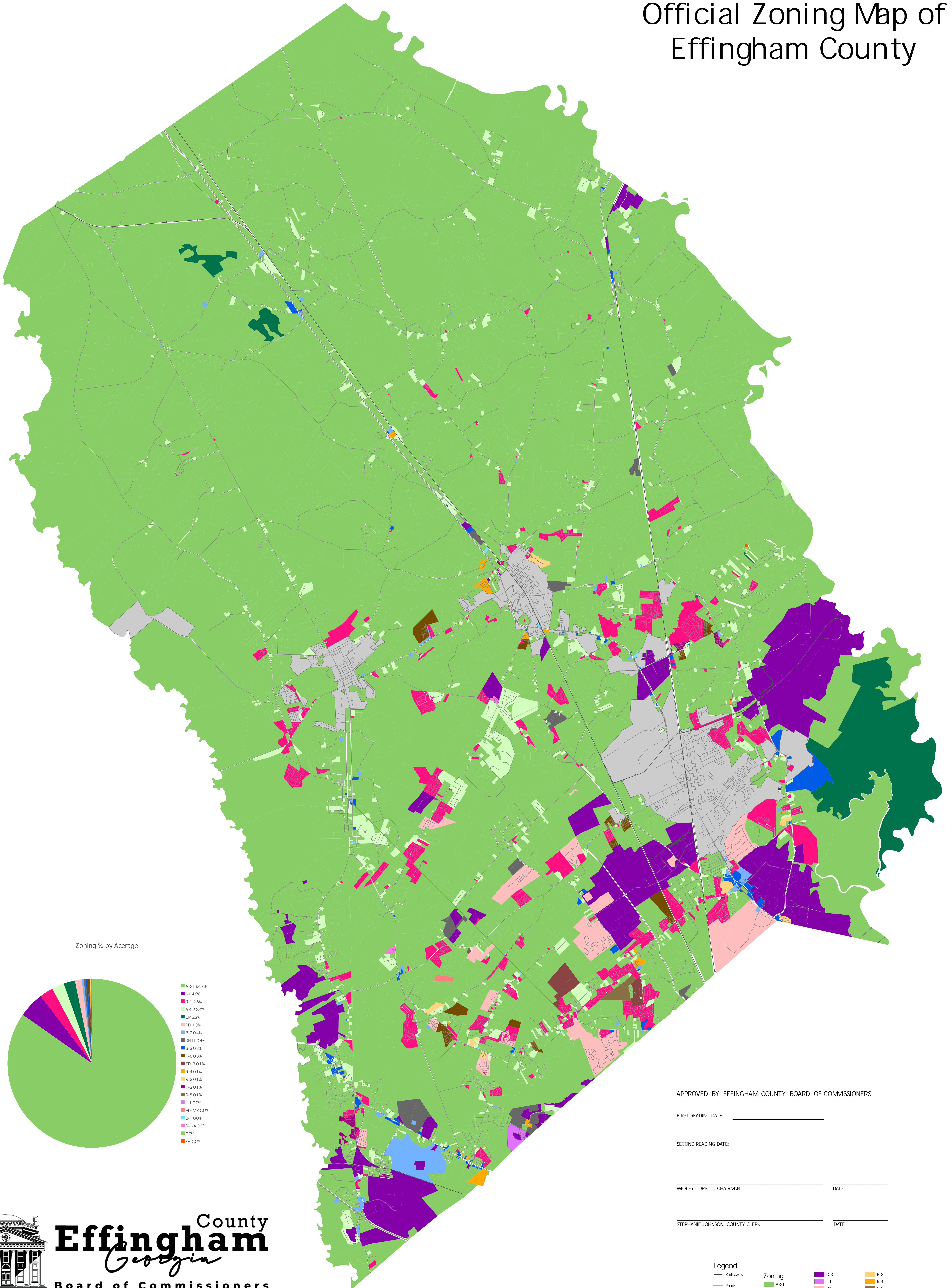
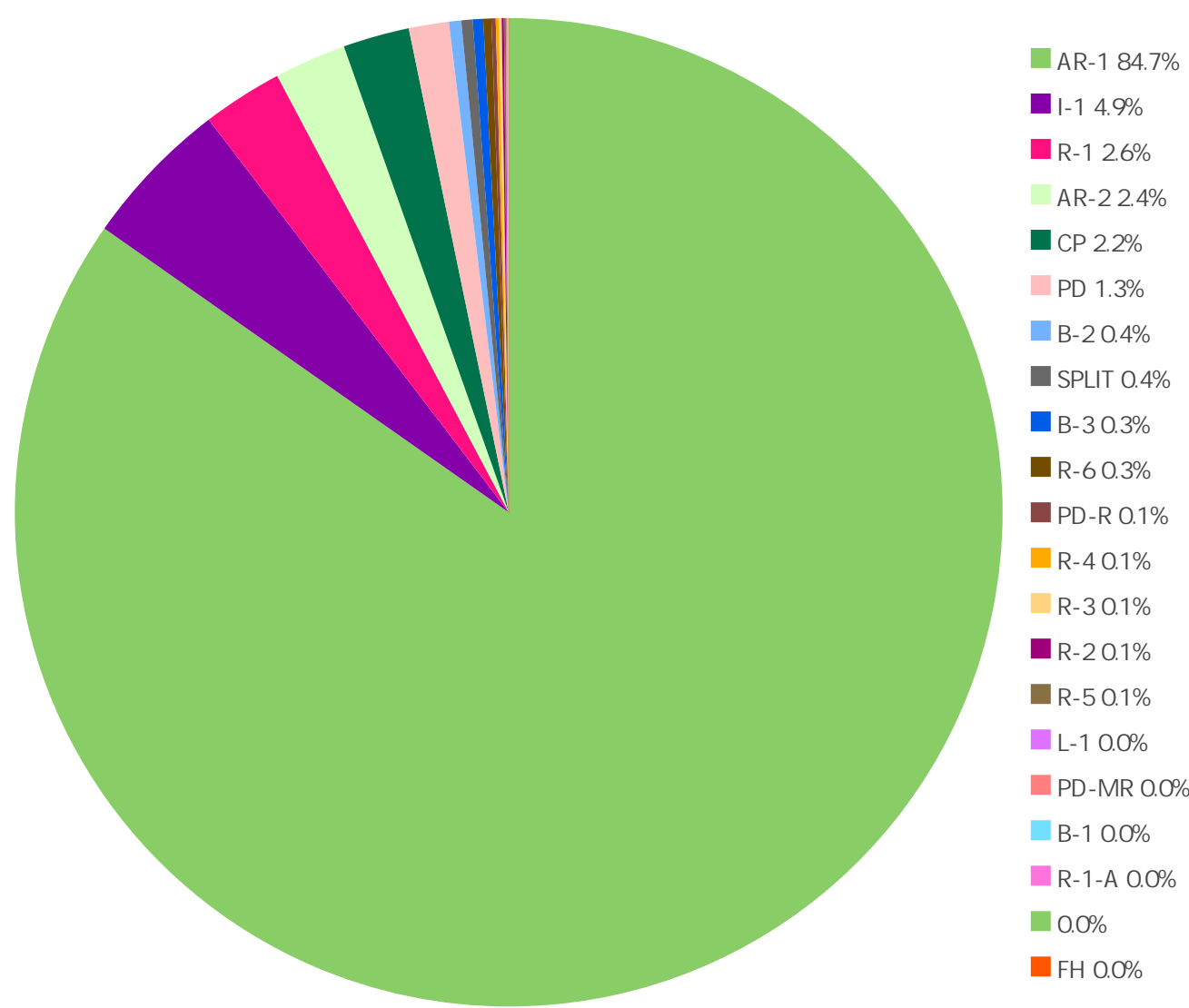


Official Zoning Map of Effingham County



Zoning % by Acreage



APPROVED BY EFFINGHAM COUNTY BOARD OF COMMISSIONERS

FIRST READING DATE: _____

SECOND READING DATE: _____

WESLEY CORBITT, CHAIRMAN _____ DATE _____

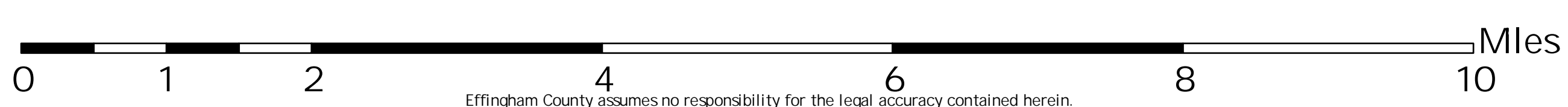
STEPHANIE JOHNSON, COUNTY CLERK _____ DATE _____



Effingham County
Effingham
Georgia
Board of Commissioners

Legend

- | | | | |
|----------------------|---------------|---------|---------|
| — Railroads | Zoning | ■ C-3 | ■ R-3 |
| — Roads | ■ AR-1 | ■ L-1 | ■ R-4 |
| — Municipal Boundary | ■ AR-2 | ■ PD | ■ R-5 |
| | ■ CP | ■ DT | ■ R-6 |
| | ■ FH | ■ PD-R | ■ SPLIT |
| | ■ B-1 | ■ R-1 | |
| | ■ B-2 | ■ R-1-A | |
| | ■ B-3 | ■ R-2 | |



Effingham County assumes no responsibility for the legal accuracy contained herein.