

24-IDC RFP-067 - RE-BID I-6 SR 30 at Midland Road

NOTICE TO PROCEED

TO: POND & Company

RE: NOTICE TO PROCEED

Task Order: 24-IDC RFP-067 - RE-BID I-6 SR 30 at Midland Road

Please consider this your NOTICE TO PROCEED on the above referenced project. In accordance with the terms of the contract, work is to commence within 14 calendar days of receipt of the Notice to Proceed unless otherwise agreed and to be completed in accordance with the schedule included within the proposal.

Dated this ____ day of _____, 2024

Effingham County Board of Commissioners

Wesley Corbitt, Chairman

ACCEPTANCE OF NOTICE:

Receipt of the above Notice to Proceed is acknowledged.

Contractor: _____

By: _____

Title: _____

Date of Acceptance: _____

Letter of Interest

June 24, 2024

Tim Callanan
County Manager
Effingham County Board of Commissioners
804 S. Laurel Street
Springfield, GA 31329

Re: **23-IDC RFP-063, I-6 (SR 30 at Midland Road – GDOT Roundabout), Effingham County**

Pond is pleased to submit this proposal for the I-6 (SR 30 at Midland Road – GDOT Roundabout). Our team of traffic and transportation engineers are very interested in providing their expertise to County for these transportation improvements. We are committed to meeting the requirements specified in the request for proposal, and in the following pages provide more detail as to our approach to accomplishing the work.

Pond is fully qualified and capable of performing these services for the County. Zach Puckett, PE will serve as the Project Manager for this effort and Richard Fangmann, PE, PTO will be the Principal in Charge. We are supported by our team of planners and engineers to carry out the necessary tasks for this project. To provide the highest quality and best value of services to the County, we have assembled a team of qualified professionals to provide comprehensive services covering all discipline needs as requested however to support our efforts, we are utilizing National Data & Surveying Services (NDS) to provide Traffic Data Collection Services – TMC and ADT and Southern Research to provide Environmental Cultural Resources.

We appreciate your time and consideration and look forward to the opportunity to continue to collaborate with Effingham County.

Sincerely,

Pond & Company



Richard Fangmann, PE, PTOE
Vice-President



Melissa Phillips
Associate | Client Manager

Project Approach / Work Plan

Project Understanding

Effingham County has a conceptual design for a proposed roundabout at the intersection of SR 30/ Noel C Conaway Road at Midland Road. The conceptual design includes survey, utilities, and right of way information. GDOT has determined that this project will require an encroachment permit per Chapter 11 of the Driveway and Encroachment Control Manual. The project has been issued a PI number and requires GDOT oversight during development. The construction plans will be developed utilizing an abbreviated GDOT Plan Development Process, including a Limited Scope Concept Report, Preliminary and Final Field Plan Reviews, as well as local certification of utilities, environmental, and right of way.

Professional Services

The work in this proposal will consist of concept development through final design. Pond, along with our subconsultants, will provide the design services necessary for completing the tasks as described herein for Effingham County.

Scope of Work

Task 1: GDOT Program Management and Coordination

Pond will serve as the County's representative and project manager throughout project execution. We will cultivate cooperative relationships between all stakeholders of the project and prioritize the County's vision over procedures and processes. Pond will facilitate monthly meetings with the GDOT PM, the County, and subject matter experts, and manage communications to ensure an open dialogue. Pond has delivered several local projects that required GDOT oversight, and we are able to avoid roadblocks that can occur during project development.

Pond will assist the County in navigating this abbreviated GDOT Plan Development Process and streamline this process as much as possible to ensure on time delivery of the project.

Deliverables for Task 1:

- Risk Assessment
- Monthly Meeting Minutes

Task 2: Concept Development

Task 2.1: Traffic Analysis

Traffic Data Collection – All traffic data collection will be performed by a sub-consultant and provided to Pond. The traffic counts listed below will be collected during an agreed/approved week that schools are in session:

- 6-Hour Turning Movement Count (6:00 AM – 9:00 AM; 3:00 PM –6:00 PM):
 - SR 30/Noel C Conaway Road at Coventry Drive
- 12-Hour Turning Movement Count (7:00 AM – 7:00 PM):
 - SR 30/Noel C Conaway Road at Midland Road
 - SR 30/Noel C Conaway Road at Coventry Drive
- 24-Hour Traffic Volume and Classification Counts:
 - SR 30/Noel C Conaway Road, west of Midland Road
 - Midland Road, north of SR 30/Noel C Conaway Road

Field Visit of Existing Conditions – Pond will complete a field visit to the intersection of SR 30/Noel C Conaway at Midland Road to observe existing field conditions. Pictures will be taken to properly document the existing conditions, including geometry, sight distance, and speed limits. Each intersection will also be reviewed to identify current deficiencies.

Traffic Analysis – Pond will analyze the traffic at each of the (2) intersections listed above, with the primary focus on the intersection of SR 30/Noel C Conaway Road at Midland Road.

A review of crash history will be completed utilizing GDOT's GEARS and Numetric databases. Capacity analysis will be performed for each intersection using Synchro Software. This analysis will be performed for the AM and PM peak hours of the existing year, opening year, and design year. Analysis of the opening and design years will include a no-build condition. This analysis will be used to determine what improvements and alternatives are necessary to obtain acceptable operations.

The GDOT Intersection Control Evaluation (ICE) tool will be utilized to determine the potential improvements at all GDOT intersections. Stage 1 and Stage 2 are anticipated for the intersection of SR 30/Noel C Conaway Road at Midland Road, whereas Stage 1 with a Waiver Request is anticipated for the intersection of SR 30/Noel C Conaway Road at Coventry Drive.

Traffic Engineering (TE) Report – Pond will document the analysis results and recommendations in a Traffic Engineering Report.

Effingham County Review – Pond will submit the TE Report to Effingham County for comment/approval. This task includes (1) meeting with the county to discuss the report. We will respond to (1) round of comments and incorporate appropriate comments into the report.

GDOT District 5 Review – Pond will submit the TE Report to GDOT District 5 for comment/approval. This task includes (1) meeting with GDOT to discuss the report, as/if needed. We will respond to (1) round of comments and incorporate appropriate comments into the report.

Task 2.2: Concept Report

Pond will produce a Limited Scope Concept Report as required by Chapter 11 of the GDOT Driveway and Encroachment Manual. The concept report will evaluate the proposed roundabout based on existing and projected traffic volumes. The concept report will also document planning and background data, design features, utility and property impacts, anticipated environmental requirements, and outline coordination and activity responsibilities.

Part of the concept report will include an alternatives analysis to evaluate benefits and costs. The report will produce a preferred alternative to move forward with preliminary design. Concept reports typically include three alternatives, including a “no-build” alternative. Due to Pond’s previous work on the comprehensive transportation plan, Pond is prepared to present the roundabout as the preferred alternative for this project and left turn lanes on Midland and SR 30 as a secondary alternative.

During the concept development phase, the previous survey will be evaluated and converted, as needed. Also, environmental resources will be identified and shown on the conceptual drawings. Early coordination with project stakeholders will begin and a public involvement plan will be implemented. No GEPA documentation will be required, however other environmental documentation will be needed as part of this process.

Pond’s risk assessment will inform what work will need to be completed prior to concept report approval. To streamline project delivery, some tasks may be completed after concept approval, including traffic projection and environmental surveys based on risk evaluation. Pond will request all GDOT-provided information early in concept development to avoid delays in concept report approval.

Deliverables for Task 2:

- Traffic Engineering Report
- Approved Limited Scope Concept Report
- Public Involvement Plan (PIP)



Figure 2-Left Turn Lanes-Secondary Alternative



Figure 1-Roundabout-Preferred Alternative

Task 3: Preliminary Design

The Preliminary Plans will include roadway plans, roadway profile, driveway profiles, cross sections, utility plans, signing and marking plans, and erosion control plans. Pond will prepare the construction plans based on the topographic survey database (completed as part of previous/separate Effingham County project). The design plans will be prepared conforming to AASHTO, Manual on Uniform Traffic Control Devices (MUTCD), Effingham County, and Georgia Department of Transportation (GDOT) requirements and standards, as appropriate, using MicroStation V8i with InRoads or OpenRoads Connect (ORD) software. All turn lane improvements are based on queue lengths identified in the Traffic Engineering Report, as well as GDOT minimum lengths.

Utility Plans and Coordination – As part of the First Submission Utility Request, Pond will prepare utility plans and submit to all provided utility owners for markups to determine existing facilities. We will incorporate the markups into the utility adjustment plans.

Cost Estimate – Pond will prepare (1) detailed opinion of probable cost for the project. Pond will prepare a construction cost estimate and will provide R/W and easement areas for the county to cost. Utility costs will be by others.

Right of Way Plans – After Preliminary Plan approval, we will prepare Right-of- Way plans per GDOT design guidelines. The Right-of-Way plans will include all required permanent Right-of-Way takes and all construction easements.

Environmental Documentation – all required environmental documentation required per Chapter 11 of the Driveway and Encroachment Manual will be provided.

Effingham County/GDOT Review – Pond will submit the Preliminary Plans to Effingham County for comment/approval. This task includes (1) meeting with the county to discuss the plans. We will respond to (1) round of comments.

Deliverables for Task 3:

- PFPR Plans and Checklist Items
- Environmental Documentation

Task 4: Final Design

Final Design Plans (FFPR) – Based on all comments received from the Preliminary Plan submittal, we will further refine the plans. These plans will include compiling a list of all Preliminary Plan comments received and our responses, prior to incorporating into Final Plans.

Utility Plans and Coordination – Pond will continue utility coordination efforts. Second Submission Utility Request will be coordinated with utility owners to finalize any utility conflicts and determine any proposed facility/utility relocations. All utility relocations will be designed by others and included in the utility coordination plans.

Cost Estimate – Pond will prepare (1) detailed opinion of probable cost/cost estimate for the project. Pond will prepare a construction cost estimate and will provide R/W and easement areas for the county to cost. Utility costs will be by others.

Effingham County/GDOT Review – Pond will submit Final Plans to Effingham County for comment/approval. This task includes (1) meeting with the county to discuss the plans. We will respond to (1) round of comments and incorporate them into the plans as applicable.

GDOT Encroachment Permit – Pond will finalize all items needed as part of the GDOT Special Encroachment Permit process. Documents will be uploaded to the Georgia Permit Application System (GPAS) portal for distribution to GDOT District 5 for review and approval.

Pond will also provide the following services as part of Final Design.

- Preparation of Bid Package – Pond will prepare the documents necessary for the County to advertise for bid, including the compilation of the Bid Plans and any required specifications and special provisions.
- Pre-Bid Meeting and Bidding Assistance – Pond will prepare for, assist the County, and attend the pre-bid meeting to answer any questions and to make sure that the contractor fully understands the scope and nature of this project. Pond will continue to assist the city to answer any questions submitted during the RFP process.
- Pre-Construction Meeting and Construction Kick-Off Meeting – Pond will prepare for, assist the County, and attend the pre-construction meeting to answer any questions and to make sure that the contractor fully understands the scope and nature of this project.
- Respond to RFIs – During the bidding and construction process, Pond will respond in writing to the contractor's request for information. This assumes a maximum number of (10) RFI requests.
- 7-Day Inspection Letter – Upon notification from the permittee, we will observe the erosion control measures that have been installed to verify they have been installed correctly and are functioning properly. Additionally, a letter will be submitted to the County summarizing the observations of the qualified personnel and noting deficiencies.

Deliverables for Task 4:

- FFPR Plans and Checklist Items

Schedule

Pond has estimated that *Task 1* through *Task 4* listed above can be completed within (12) months, following Notice to Proceed (NTP) from Effingham County. Please note that this schedule timeframe is also dependent on subconsultant scheduling and agency review times, including Effingham County and GDOT.

Assumptions

The design plans will be prepared as a locally funded project.

Services or tasks not specifically outlined above are excluded and would be considered additional services. Services not included in the scope:

- Traffic Analysis – Beyond Task 2
- Traffic Data Collection – Beyond Task 2
- Traffic Signal Plans
- GDOT Design Traffic Forecasting Manual
- GDOT Office of Planning Design Traffic
- Traffic Signal Plans
- ITS/Signal Communications Plans
- Lighting Plans
- Landscaping Plans
- Tree Removal/Recompense Plans
- Topographic Survey Services
- Subsurface Utility Engineering (SUE) Services
- Additional Meetings
- MS4 Analysis/Documentation
- Right-of-Way Staking, Right of Way Acquisition Services/Assistance
- Railroad Preliminary Engineering Review or Other Associated Fees
- Structural Design and/or Analysis
- Pay Application Review
- Materials Testing
- Construction Engineering and Inspection

Technical Proposal

Project Understanding

Effingham County has a conceptual design for a proposed roundabout at the intersection of SR 30/ Noel C Conaway Road at Midland Road. The conceptual design includes survey, utilities, and right of way information. GDOT has determined that this project will require an encroachment permit per Chapter 11 of the Driveway and Encroachment Control Manual. The project has been issued a PI number and requires GDOT oversight during development. The construction plans will be developed utilizing an abbreviated GDOT Plan Development Process, including a Limited Scope Concept Report, Preliminary and Final Field Plan Reviews, as well as local certification of utilities, environmental, and right of way.

Professional Services

The work in this proposal will consist of concept development through final design. Pond, along with our subconsultants, will provide the design services necessary for completing the tasks as described herein for Effingham County.

Scope of Work

Task 1: GDOT Program Management and Coordination

Pond will serve as the County's representative and project manager throughout project execution. We will cultivate cooperative relationships between all stakeholders of the project and prioritize the County's vision over procedures and processes. Pond will facilitate monthly meetings with the GDOT PM, the County, and subject matter experts, and manage communications to ensure an open dialogue. Pond has delivered several local projects that required GDOT oversight, and we are able to avoid roadblocks that can occur during project development.

Pond will assist the County in navigating this abbreviated GDOT Plan Development Process and streamline this process as much as possible to ensure on time delivery of the project.

Deliverables for Task 1:

- Risk Assessment
- Monthly Meeting Minutes

Task 2: Concept Development

Task 2.1: Traffic Analysis

Traffic Data Collection – All traffic data collection will be performed by a sub-consultant and provided to Pond. The traffic counts listed below will be collected during an agreed/approved week that schools are in session:

- 6-Hour Turning Movement Count (6:00 AM – 9:00 AM; 3:00 PM –6:00 PM):
 - SR 30/Noel C Conaway Road at Coventry Drive
- 12-Hour Turning Movement Count (7:00 AM – 7:00 PM):
 - SR 30/Noel C Conaway Road at Midland Road
 - SR 30/Noel C Conaway Road at Coventry Drive
- 24-Hour Traffic Volume and Classification Counts:
 - SR 30/Noel C Conaway Road, west of Midland Road
 - Midland Road, north of SR 30/Noel C Conaway Road

Field Visit of Existing Conditions – Pond will complete a field visit to the intersection of SR 30/Noel C Conaway at Midland Road to observe existing field conditions. Pictures will be taken to properly document the existing conditions, including geometry, sight distance, and speed limits. Each intersection will also be reviewed to identify current deficiencies.

Traffic Analysis – Pond will analyze the traffic at each of the (2) intersections listed above, with the primary focus on the intersection of SR 30/Noel C Conaway Road at Midland Road.

A review of crash history will be completed utilizing GDOT's GEARS and Numetric databases. Capacity analysis will be performed for each intersection using Synchro Software. This analysis will be performed for the AM and PM peak hours of the existing year, opening year, and design year. Analysis of the opening and design years will include a no-build condition. This analysis will be used to determine what improvements and alternatives are necessary to obtain acceptable operations.

The GDOT Intersection Control Evaluation (ICE) tool will be utilized to determine the potential improvements at all GDOT intersections. Stage 1 and Stage 2 are anticipated for the intersection of SR 30/Noel C Conaway Road at Midland Road, whereas Stage 1 with a Waiver Request is anticipated for the intersection of SR 30/Noel C Conaway Road at Coventry Drive.

Traffic Engineering (TE) Report – Pond will document the analysis results and recommendations in a Traffic Engineering Report.

Effingham County Review – Pond will submit the TE Report to Effingham County for comment/approval. This task includes (1) meeting with the county to discuss the report. We will respond to (1) round of comments and incorporate appropriate comments into the report.

GDOT District 5 Review – Pond will submit the TE Report to GDOT District 5 for comment/approval. This task includes (1) meeting with GDOT to discuss the report, as/if needed. We will respond to (1) round of comments and incorporate appropriate comments into the report.

Task 2.2: Concept Report

Pond will produce a Limited Scope Concept Report as required by Chapter 11 of the GDOT Driveway and Encroachment Manual. The concept report will evaluate the proposed roundabout based on existing and projected traffic volumes. The concept report will also document planning and background data, design features, utility and property impacts, anticipated environmental requirements, and outline coordination and activity responsibilities.

Part of the concept report will include an alternatives analysis to evaluate benefits and costs. The report will produce a preferred alternative to move forward with preliminary design. Concept reports typically include three alternatives, including a “no-build” alternative. Due to Pond’s previous work on the comprehensive transportation plan, Pond is prepared to present the roundabout as the preferred alternative for this project and left turn lanes on Midland and SR 30 as a secondary alternative.

During the concept development phase, the previous survey will be evaluated and converted, as needed. Also, environmental resources will be identified and shown on the conceptual drawings. Early coordination with project stakeholders will begin and a public involvement plan will be implemented. No GEPA documentation will be required, however other environmental documentation will be needed as part of this process.

Pond’s risk assessment will inform what work will need to be completed prior to concept report approval. To streamline project delivery, some tasks may be completed after concept approval, including traffic projection and environmental surveys based on risk evaluation. Pond will request all GDOT-provided information early in concept development to avoid delays in concept report approval.

Deliverables for Task 2:

- Traffic Engineering Report
- Approved Limited Scope Concept Report
- Public Involvement Plan (PIP)



Figure 2-Left Turn Lanes-Secondary Alternative



Figure 1-Roundabout-Preferred Alternative

Task 3: Preliminary Design

The Preliminary Plans will include roadway plans, roadway profile, driveway profiles, cross sections, utility plans, signing and marking plans, and erosion control plans. Pond will prepare the construction plans based on the topographic survey database (completed as part of previous/separate Effingham County project). The design plans will be prepared conforming to AASHTO, Manual on Uniform Traffic Control Devices (MUTCD), Effingham County, and Georgia Department of Transportation (GDOT) requirements and standards, as appropriate, using MicroStation V8i with InRoads or OpenRoads Connect (ORD) software. All turn lane improvements are based on queue lengths identified in the Traffic Engineering Report, as well as GDOT minimum lengths.

Utility Plans and Coordination – As part of the First Submission Utility Request, Pond will prepare utility plans and submit to all provided utility owners for markups to determine existing facilities. We will incorporate the markups into the utility adjustment plans.

Cost Estimate – Pond will prepare (1) detailed opinion of probable cost for the project. Pond will prepare a construction cost estimate and will provide R/W and easement areas for the county to cost. Utility costs will be by others.

Right of Way Plans – After Preliminary Plan approval, we will prepare Right-of- Way plans per GDOT design guidelines. The Right-of-Way plans will include all required permanent Right-of-Way takes and all construction easements.

Environmental Documentation – all required environmental documentation required per Chapter 11 of the Driveway and Encroachment Manual will be provided.

Effingham County/GDOT Review – Pond will submit the Preliminary Plans to Effingham County for comment/approval. This task includes (1) meeting with the county to discuss the plans. We will respond to (1) round of comments.

Deliverables for Task 3:

- PFPR Plans and Checklist Items
- Environmental Documentation

Task 4: Final Design

Final Design Plans (FFPR) – Based on all comments received from the Preliminary Plan submittal, we will further refine the plans. These plans will include compiling a list of all Preliminary Plan comments received and our responses, prior to incorporating into Final Plans.

Utility Plans and Coordination – Pond will continue utility coordination efforts. Second Submission Utility Request will be coordinated with utility owners to finalize any utility conflicts and determine any proposed facility/utility relocations. All utility relocations will be designed by others and included in the utility coordination plans.

Cost Estimate – Pond will prepare (1) detailed opinion of probable cost/cost estimate for the project. Pond will prepare a construction cost estimate and will provide R/W and easement areas for the county to cost. Utility costs will be by others.

Effingham County/GDOT Review – Pond will submit Final Plans to Effingham County for comment/approval. This task includes (1) meeting with the county to discuss the plans. We will respond to (1) round of comments and incorporate them into the plans as applicable.

GDOT Encroachment Permit – Pond will finalize all items needed as part of the GDOT Special Encroachment Permit process. Documents will be uploaded to the Georgia Permit Application System (GPAS) portal for distribution to GDOT District 5 for review and approval.

Pond will also provide the following services as part of Final Design.

- Preparation of Bid Package – Pond will prepare the documents necessary for the County to advertise for bid, including the compilation of the Bid Plans and any required specifications and special provisions.
- Pre-Bid Meeting and Bidding Assistance – Pond will prepare for, assist the County, and attend the pre-bid meeting to answer any questions and to make sure that the contractor fully understands the scope and nature of this project. Pond will continue to assist the city to answer any questions submitted during the RFP process.
- Pre-Construction Meeting and Construction Kick-Off Meeting – Pond will prepare for, assist the County, and attend the pre-construction meeting to answer any questions and to make sure that the contractor fully understands the scope and nature of this project.
- Respond to RFIs – During the bidding and construction process, Pond will respond in writing to the contractor's request for information. This assumes a maximum number of (10) RFI requests.
- 7-Day Inspection Letter – Upon notification from the permittee, we will observe the erosion control measures that have been installed to verify they have been installed correctly and are functioning properly. Additionally, a letter will be submitted to the County summarizing the observations of the qualified personnel and noting deficiencies.

Deliverables for Task 4:

- FFPR Plans and Checklist Items

Schedule

Pond has estimated that *Task 1* through *Task 4* listed above can be completed within (12) months, following Notice to Proceed (NTP) from Effingham County. Please note that this schedule timeframe is also dependent on subconsultant scheduling and agency review times, including Effingham County and GDOT.

Assumptions

The design plans will be prepared as a locally funded project.

Services or tasks not specifically outlined above are excluded and would be considered additional services. Services not included in the scope:

- Traffic Analysis – Beyond Task 2
- Traffic Data Collection – Beyond Task 2
- Traffic Signal Plans
- GDOT Design Traffic Forecasting Manual
- GDOT Office of Planning Design Traffic
- Traffic Signal Plans
- ITS/Signal Communications Plans
- Lighting Plans
- Landscaping Plans
- Tree Removal/Recompense Plans
- Topographic Survey Services
- Subsurface Utility Engineering (SUE) Services
- Additional Meetings
- MS4 Analysis/Documentation
- Right-of-Way Staking, Right of Way Acquisition Services/Assistance
- Railroad Preliminary Engineering Review or Other Associated Fees
- Structural Design and/or Analysis
- Pay Application Review
- Materials Testing
- Construction Engineering and Inspection

Proposal Cost

June 24, 2024

Tim Callanan
County Manager
Effingham County Board of Commissioners
804 S. Laurel Street
Springfield, GA 31329

Re: **23-IDC RFP-063, I-6 (SR 30 at Midland Road – GDOT Roundabout), Effingham County**

Pond & Company (Pond) is pleased to submit this proposal for transportation engineering design services for the above project.

Professional Fees

Pond proposes to accomplish *Task 1* through *Task 5* for a Not-to-Exceed Lump Sum total of \$443,907.28. The fee details are listed in the attached Man-Hour Estimate.

- *Task 1* – GDOT Program Management and Coordination: \$36,518.50
- *Task 2* – Conceptual Development: \$211,451.78 (Includes Environmental Documentation)
- *Task 3* – Preliminary Design: \$112,000.00
- *Task 4* – Final Design: \$72,127.00

These fees are based on the contracted unit rates, not to exceed total of \$432,097.28

If this fee is acceptable, Pond & Company is available to begin work immediately. If you would like to discuss or modify, please contact me at FangmannR@pondco.com or Zach Puckett, who will serve as the Project Manager, at PuckettZ@pondco.com or via phone at (678) 336-7740.

Sincerely,

POND & COMPANY



Richard Fangmann, PE, PTOE
Vice-President

Cc: Zach Puckett, PE
Melissa Phillips

Attachments:
Man-Hour Estimates

Effingham County

**SR 30 at Midland Road
Roundabout
Project Length 0.23 miles**

SUMMARY BY PHASE

COST AMOUNT OF CONTRACT PROPOSAL

6/24/2024

	PHASE AMOUNTS
Phase 1 GDOT Program Management and Coordination	\$ 36,518.50
Phase 2 Concept Development (Includes Environmental)	\$ 211,451.78
Phase 3 Preliminary Design	\$ 112,000.00
Phase 4 Final Design	\$ 72,127.00
I	\$ -
TOTAL DESIGN COST FOR ALL SEGMENTS	\$ 432,097.28

Effingham County

Phase 1 Summary

PROJECT: SR 30 at Midland Road Roundabout

Phase 1

GDOT Program Management and Coordination

PERSONNEL	EST. HOURS	RATE/HR.	COST \$	TOTALS
PRINCIPAL	6	\$ 250.00	\$ 1,500.00	
PROJECT MANAGER	123	\$ 230.00	\$ 28,290.00	
SENIOR ENGINEER	24	\$ 200.00	\$ 4,800.00	
MID LEVEL ENGINEER	12	\$ 130.00	\$ 1,560.00	
SENIOR LANDSCAPE AF	0	\$ 162.84	\$ -	
SUVEYOR, PROJECT	0	\$ 120.82	\$ -	
SURVEY, CREW	0	\$ 131.33	\$ -	
ADMINISTRATIVE			\$ -	
TOTAL DIRECT LABOR 165 Manhours				\$ 36,150.00
DIRECT COSTS (SPECIFY):				
ITEM	UNIT COST	QUANTITY	TOTALS	
MILEAGE	\$ 0.67	550	\$	368.50
REPRODUCTION	\$ 150.00	0	\$	-
MAIL & DELIVERY	\$ 50.00	0	\$	-
TRAVEL	\$ -	0	\$	-
			\$	-
Direct Cost Total			\$	368.50
SUBCONSULTANTS (LIST):				
SUB CONSULTANT			TOTALS	
			\$	-
			\$	-
Subconsultant Sub Total			\$	-
COST AMOUNT FOR PHASE			\$	36,518.50

Effingham County

Phase 2 Summary

PROJECT: SR 30 at Midland Road Roundabout

Phase 2

Concept Development (Includes Environmental)

PERSONNEL	EST. HOURS	RATE/HR.	COST \$	TOTALS
PRINCIPAL	0	\$ 250.00	\$ -	
PROJECT MANAGER	12	\$ 230.00	\$ 2,760.00	
SENIOR ENGINEER	106	\$ 200.00	\$ 21,200.00	
MID LEVEL ENGINEER	340	\$ 130.00	\$ 44,200.00	
SUVEYOR, PROJECT	0	\$ 120.82	\$ -	
SURVEY, CREW	0	\$ 131.33	\$ -	
ADMINISTRATIVE	2	\$ 95.00	\$ 190.00	
TOTAL DIRECT LABOR				\$ 68,350.00
DIRECT COSTS (SPECIFY):				
ITEM	UNIT COST	QUANTITY	TOTALS	
MILEAGE	\$ 0.67	550	\$	368.50
REPRODUCTION	\$ 150.00	0	\$	-
MAIL & DELIVERY	\$ 50.00	0	\$	-
TRAVEL	\$ -	0	\$	-
			\$	-
Direct Cost Total			\$	368.50
SUBCONSULTANTS (LIST):				
SUB CONSULTANT			TOTALS	
Environmental (Cultural Resources)			\$	61,086.78
Pond Environmental (GEPA, Ecology, F			\$	79,666.50
Traffic Counts			\$	1,980.00
Subconsultant Sub Total			\$	142,733.28
COST AMOUNT FOR PHASE			\$	211,451.78

Effingham County
Phase 2 Detail

PROJECT: SR 30 at Midland Road Roundabout
Phase 2
Concept Development (Includes Environmental)

TASKS	Assumptions	No. of SHT	PRINCIPAL	PROJECT MANAGER	SENIOR ENGINEER	MID LEVEL ENGINEER	SURVEYOR, PROJECT	SURVEY, CREW	ADMINISTRATIVE	TOTAL	% OF TOTAL HOURS
ROADWAY											
Site Visit					8	8				16	3.5%
Data Gathering						8				8	1.7%
Concept Horizontal Alignment					2	4			2	8	1.7%
Concept Typical Sections	Coordination with surveyor; included review of databased and field visit to confirm				2	8				10	2.2%
Concept Pavement Design					1	4				5	
Concept Vertical Alignment					2	4				6	
Roundabout Design					16	40				56	12.2%
Fastest Path Analysis	Site visit to verify survey and utility information				2	16				18	3.9%
Turning Movement Templates (Autoturn)					1	8				9	
Intersection Sight Distance Analysis					2	8				10	2.2%
Concept Bridge Layout											
Concept Bridge Design											
Concept Drainage Design					4	16				20	4.3%
Concept MS4 Design											
Concept Cross Sections					4	24				28	6.1%
Concept Layout					8	16				24	5.2%
Concept Report					8	16				24	5.2%
QAQC					16					16	3.5%
Concept Construction Cost Estimate					2	8				10	2.2%
Concept Utility Cost Estimate					1	4				5	1.1%
Concept Right of Way Cost Estimate					1	4				5	1.1%
Concept Mitigation Cost Estimate					1	4				5	1.1%
Revise Concept with Client Comments					8	16				24	5.2%
SURVEY											
Validate/Convert survey						40				40	8.7%
Traffic											
Traffic Analysis	Analysis, including ICE documentation				2	6	40			48	10.4%
Report Documentation					4	6	40			50	10.9%
QA/QC					4	4	4			12	2.6%
Coordination with Sub	Coordination with traffic data collection sub				2	1				3	0.7%
TOTALS		0	0	12	106	340	0	0	2	460	95.7%

Effingham County

Phase 3 Summary

PROJECT: SR 30 at Midland Road Roundabout

Phase 3

Preliminary Design

PERSONNEL	EST. HOURS	RATE/HR.	COST \$	TOTALS
PRINCIPAL	0	\$ 250.00	\$ -	
PROJECT MANAGER	12	\$ 230.00	\$ 2,760.00	
SENIOR ENGINEER	99	\$ 200.00	\$ 19,800.00	
MID LEVEL ENGINEER	688	\$ 130.00	\$ 89,440.00	
SENIOR LANDSCAPE AF	0	\$ 162.84	\$ -	
LANDSCAPE ARCHITEC	0	\$ 131.33	\$ -	
ADMINISTRATIVE	0	\$ 95.00	\$ -	

TOTAL DIRECT LABOR	799 Manhours	\$ 112,000.00
---------------------------	--------------	----------------------

DIRECT COSTS (SPECIFY):			
ITEM	UNIT COST	QUANTITY	TOTALS
MILEAGE	\$ 0.67	0	\$ -
REPRODUCTION	\$ 150.00	0	\$ -
MAIL & DELIVERY	\$ 50.00	0	\$ -
TRAVEL	\$ -	0	\$ -
			\$ -
Direct Cost Total			\$ -

SUBCONSULTANTS (LIST):			
SUB CONSULTANT			TOTALS
			\$ -
			\$ -
			\$ -

Subconsultant Sub Total		\$ -
COST AMOUNT FOR PHASE		\$ 112,000.00

Effingham County

Phase 4 Summary

PROJECT: SR 30 at Midland Road Roundabout

Phase 4

Final Design

PERSONNEL	EST. HOURS	RATE/HR.	COST \$	TOTALS
PRINCIPAL	0	\$ 250.00	\$ -	
PROJECT MANAGER	47	\$ 230.00	\$ 10,810.00	
SENIOR ENGINEER	124	\$ 200.00	\$ 24,800.00	
MID LEVEL ENGINEER	265	\$ 130.00	\$ 34,450.00	
SENIOR LANDSCAPE AF	0	\$ 162.84	\$ -	
LANDSCAPE ARCHITEC	0	\$ 131.33	\$ -	
ADMINISTRATIVE	14	\$ 95.00	\$ 1,330.00	

TOTAL DIRECT LABOR	450 Manhours	\$ 71,390.00
---------------------------	--------------	---------------------

DIRECT COSTS (SPECIFY):

ITEM	UNIT COST	QUANTITY	TOTALS
MILEAGE	\$ 0.67	1100	\$ 737.00
REPRODUCTION	\$ 150.00	0	\$ -
MAIL & DELIVERY	\$ 50.00	0	\$ -
TRAVEL	\$ -	0	\$ -
			\$ -

Direct Cost Total	\$ 737.00
--------------------------	------------------

SUBCONSULTANTS (LIST):

SUB CONSULTANT	TOTALS
	\$ -
	\$ -

Subconsultant Sub Total	\$ -
--------------------------------	-------------

COST AMOUNT FOR PHASE	\$ 72,127.00
------------------------------	---------------------

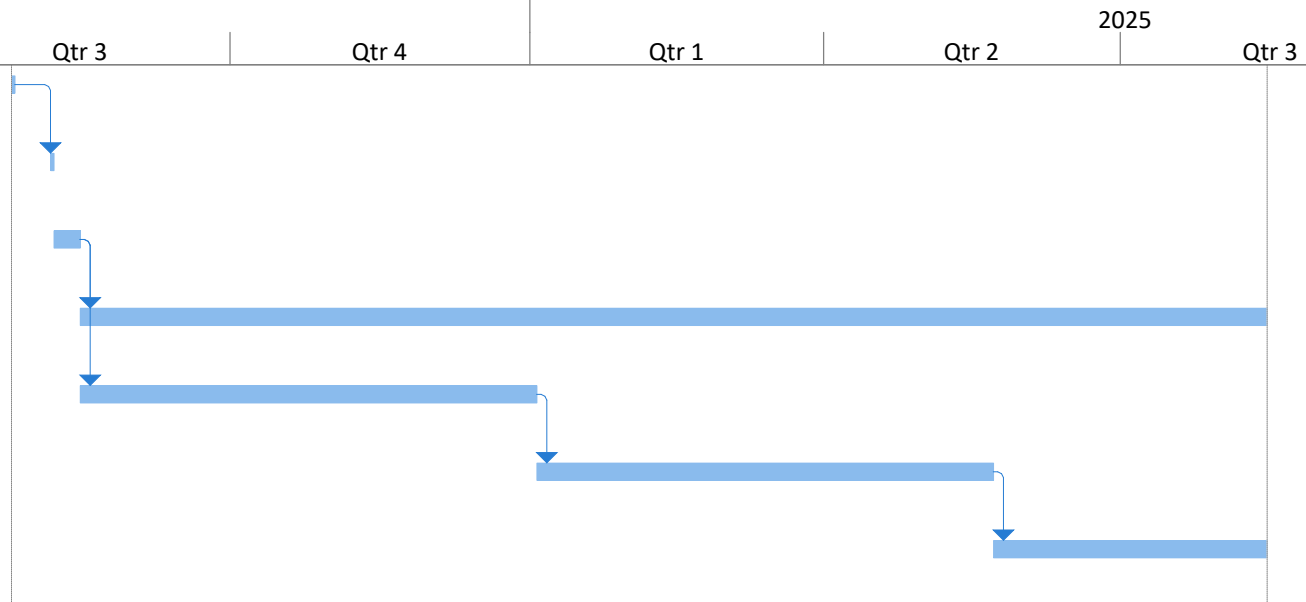
Effingham County
Phase 4 Detail

PROJECT: SR 30 at Midland Road Roundabout
Phase 4
Final Design

TASKS	Assumptions	No. of SHT	PRINCIPAL	PROJECT MANAGER	SENIOR ENGINEER	MID LEVEL ENGINEER	SENIOR LANDSCAPE ARCHITECT	LANDSCAPE ARCHITECT	ADMINISTRATIVE	TOTAL	% OF TOTAL HOURS
ROADWAY											
Finalize Horizontal Alignments					2	4			2	8	1.8%
Finalize Typical Sections					2	4				6	1.3%
Finalize Vertical Alignments					2	4			4	10	2.2%
Finalize Plan View Layout					8	40				48	10.7%
Finalize Driveway Profiles					4	8				12	3%
Finalize Drainage Design					8	16				24	5.3%
Finalize Cross Sections					8	24				32	7.1%
Finalize Staging					8	40				48	10.7%
Finalize Lighting Plans											
Finalize Signing and Marking Plans					4	16				20	4.4%
Finalize Signal Plans											
Finalize ITS/ATMS Plans											
Finalize Landscaping Plans											
Finalize Wall Envelopes											
Finalize Bridge Plans											
Finalize Erosion Control Plans					8	24				32	7.1%
Utility Plans					4	4				8	1.8%
Utility Coordination	2nd Submission				8	8				16	3.6%
Cost Estimate					2	4	16			22	4.9%
FFPR Meeting					4	4	4			12	2.7%
GDOT Encroachment Permit	Upload and coordination				8	12	25			45	10.0%
Bid Package Preparation					4	4	8		8	24	5.3%
Pre-Bid Meeting and Bidding Assistance	Virtual				8	8				16	3.6%
Pre-Construction Meeting					8	8				16	3.6%
RFIs	10 RFIs				5	10	20			35	7.8%
7 day inspection					8	8				16	3.6%
TOTALS		0	0	47	124	265	0	0	14	450	100.0%

Effingham County-SR 30 AT MIDLAND ROAD

ID	Task Name	Duration	Start	Finish	Predecessors	24				
						Qtr 3	Qtr 4	Qtr 1	Qtr 2	Qtr 3
1	<u>EFFINGHAM COUNTY BOARD OF COMMISSIONERS APPROVAL</u>	1 day	Fri 7/26/24	Fri 7/26/24						
2	<u>COUNTY ISSUES NOTICE TO PROCEED (NTP)</u>	1 day	Wed 8/7/24	Wed 8/7/24	1FS+7 days					
3	<u>PROJECT ENTRY AND KICK OFF</u>	6 days	Thu 8/8/24	Thu 8/15/24						
4	PHASE 1: GDOT PROGRAM MANAGEMENT AND COORDINATION	52 wks	Fri 8/16/24	Thu 8/14/25	3					
5	PHASE 2: CONCEPT DEVELOPMENT	100 days	Fri 8/16/24	Thu 1/2/25	3					
6	PHASE 3: PRELIMINARY DESIGN	100 days	Fri 1/3/25	Thu 5/22/25	5					
7	PHASE 4: FINAL DESIGN	60 days	Fri 5/23/25	Thu 8/14/25	6					



Project: Effingham County-
Date: Mon 6/24/24

Task		Project Summary		Inactive Milestone		Manual Summary Rollup		Deadline	
Split		External Tasks		Inactive Summary		Manual Summary		Progress	
Milestone		External Milestone		Manual Task		Start-only		Manual Progress	
Summary		Inactive Task		Duration-only		Finish-only			