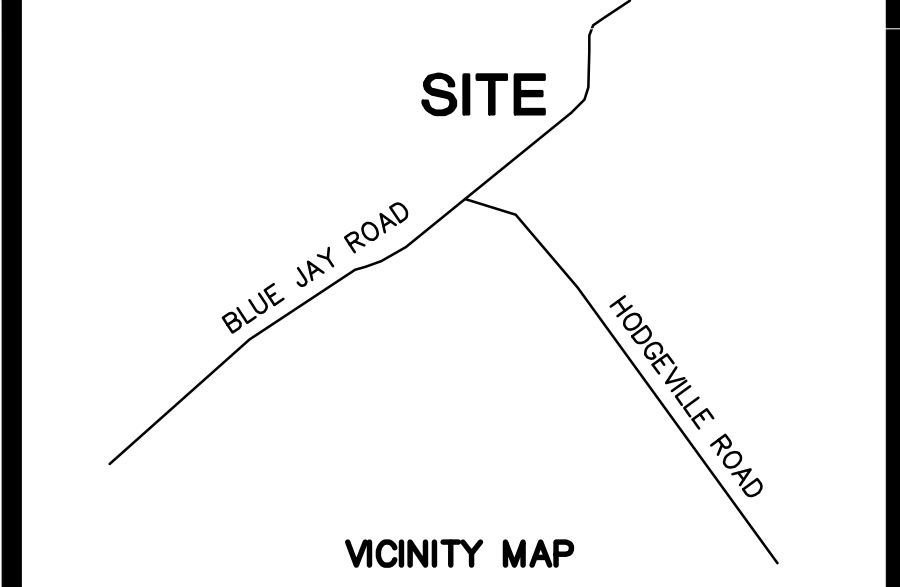
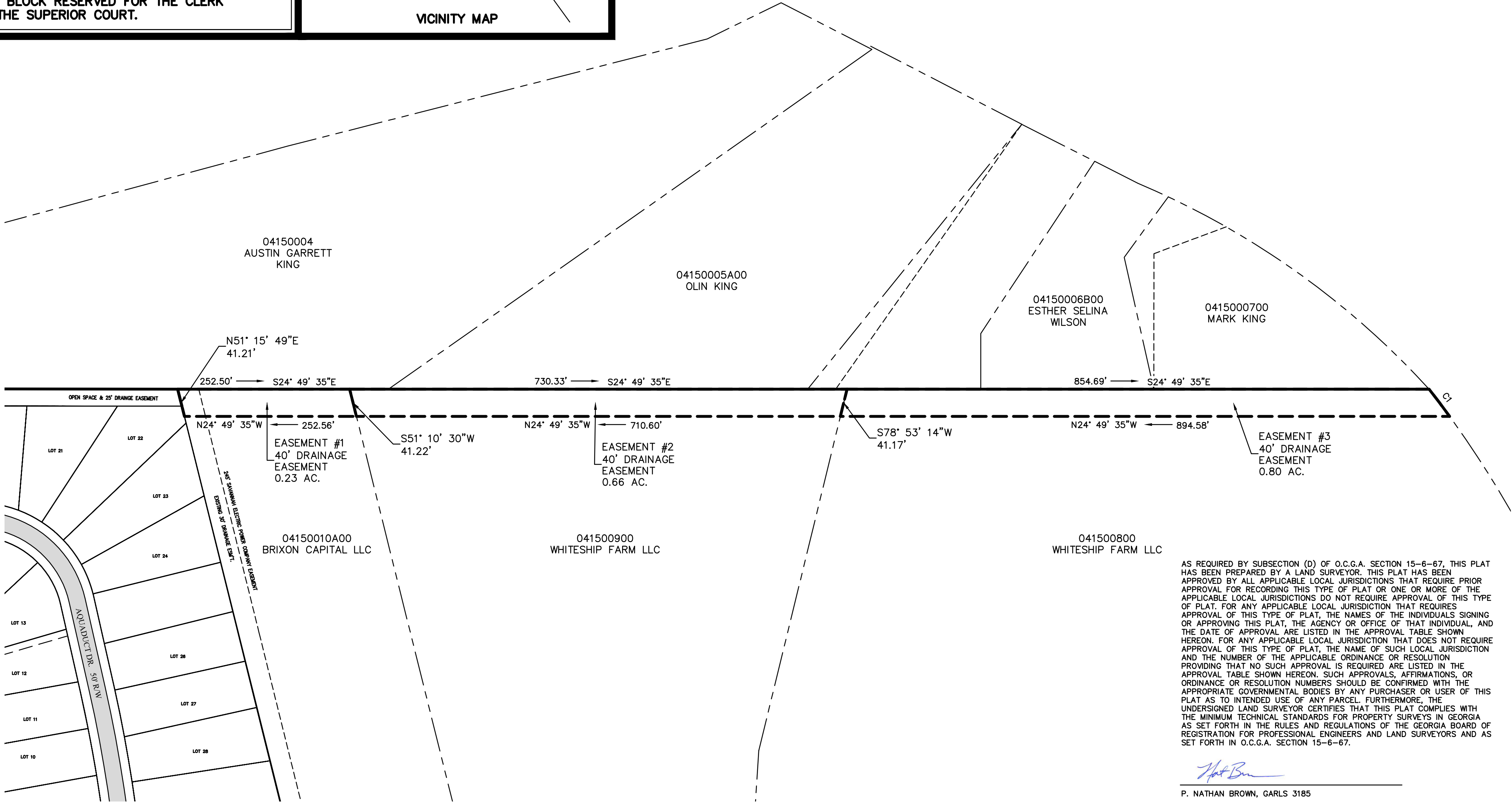
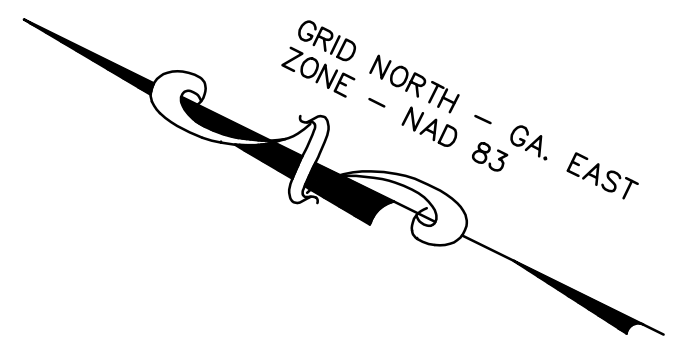


THIS BLOCK RESERVED FOR THE CLERK OF THE SUPERIOR COURT.



CURVE TABLE						
CURVE NO.	DELTA	ARC	RADIUS	TANGENT	CHORD DIR.	CHORD
C1	1°54'45"	50.08'	1500.25'	25.04'	S28°11'07"W	50.08'



AS REQUIRED BY SUBSECTION (D) OF O.C.G.A. SECTION 15-6-67, THIS PLAT HAS BEEN PREPARED BY A LAND SURVEYOR. THIS PLAT HAS BEEN APPROVED BY ALL APPLICABLE LOCAL JURISDICTIONS THAT REQUIRE PRIOR APPROVAL FOR RECORDING THIS TYPE OF PLAT OR ONE OR MORE OF THE APPLICABLE LOCAL JURISDICTIONS DO NOT REQUIRE APPROVAL OF THIS TYPE OF PLAT. FOR ANY APPLICABLE LOCAL JURISDICTION THAT REQUIRES APPROVAL OF THIS TYPE OF PLAT, THE NAMES OF THE INDIVIDUALS SIGNING OR APPROVING THIS PLAT, THE AGENCY OR OFFICE OF THAT INDIVIDUAL, AND THE DATE OF APPROVAL ARE LISTED IN THE APPROVAL TABLE SHOWN HEREON. FOR ANY APPLICABLE LOCAL JURISDICTION THAT DOES NOT REQUIRE APPROVAL OF THIS TYPE OF PLAT, THE NAME OF SUCH LOCAL JURISDICTION AND THE NUMBER OF THE APPLICABLE ORDINANCE OR RESOLUTION PROVIDING THAT NO SUCH APPROVAL IS REQUIRED ARE LISTED IN THE APPROVAL TABLE SHOWN HEREON. SUCH APPROVALS, AFFIRMATIONS, OR ORDINANCE OR RESOLUTION NUMBERS SHOULD BE CONFIRMED WITH THE APPROPRIATE GOVERNMENTAL BODIES BY ANY PURCHASER OR USER OF THIS PLAT AS TO INTENDED USE OF ANY PARCEL. FURTHERMORE, THE UNDERSIGNED LAND SURVEYOR CERTIFIES THAT THIS PLAT COMPLIES WITH THE MINIMUM TECHNICAL STANDARDS FOR PROPERTY SURVEYS IN GEORGIA AS SET FORTH IN THE RULES AND REGULATIONS OF THE GEORGIA BOARD OF REGISTRATION FOR PROFESSIONAL ENGINEERS AND LAND SURVEYORS AND AS SET FORTH IN O.C.G.A. SECTION 15-6-67.

P. Nathan Brown
P. NATHAN BROWN, GARLS 3185

EASEMENT PLAT
LANDS OF BRIXON CAPITAL LLC AND WHITESHIP FARMS LLC, 9TH G.M. DISTRICT, EFFINGHAM COUNTY, GEORGIA

DATE: MARCH 21, 2023

JOB NO.

SCALE: 1"=100'

ERROR OF CLOSURE: FIELD - 1/54,457
ERROR OF CLOSURE: PLAT - 1/122,302
ANGULAR ERROR: 1" PER POINT
EQUIPMENT USED: TOTAL STATION
0 100 200

HUSSEY GAY BELL
Established 1958
329 COMMERCIAL DRIVE, SAVANNAH, GA 31406 / T:912.354.4626

