

OPTION TO PURCHASE

GA DOT P.I. Number: 0016637 Parcel # 2

Tax Parcel ID # S1010023

Property Location: North Pine Street, Springfield, GA 31329

GEORGIA, EFFINGHAM COUNTY

For and in consideration of the sum of One Dollar (\$1.00), receipt whereof being acknowledged, the undersigned grants to The City of Springfield, Georgia an option to acquire the following described real estate:

Right of Way and/or Easement rights through that tract or parcel of land located in Land Lots 3 & 4 Block 4 of the 11th District, N/A Section or GMD N/A of Effingham County, Georgia, and being more particularly described on Exhibit "A" attached hereto and made a part hereof by reference.

For the sum of **\$DONATION**, the undersigned agrees to execute and deliver to The City of Springfield, Georgia easements to the lands owned by the undersigned as reflected on the attached Exhibit "A".

* * * * *

The following conditions are imposed upon the grant of this option:

- 1) This option shall extend for 90 days from this date.
- 2) The consideration recited is full payment for the rights conveyed.

N/A Square Feet of Right of Way

N/A Linear Feet of Limited Access

N/A Square Feet of Construction and Maintenance Easement (Permanent)

1,027.24 Square Feet of Construction Easement (Temporary)

3) All Temporary Easements will terminate upon completion and acceptance of the same by the City.

- 4) The undersigned shall obtain all quit claim deeds or releases from any tenant now in possession and any other parties having a claim or interest in the property described above.
- 5) Special Provisions, if any, are listed on Exhibit "B", which is attached hereto and incorporated herein by reference.

Witness my hand and seal this _____ day of _____, 2025.

Signed, Sealed and Delivered
in the presence of:

Effingham County, Georgia

By: _____

Witness

By: _____

Notary Public (Seal)

OPTION TO PURCHASE

GA DOT P.I. Number: 0016637 Parcel # 2

Tax Parcel ID # S1010023

Property Location: North Pine Street, Springfield, GA 31329

ACCEPTED BY:

CITY OF SPRINGFIELD, GEORGIA

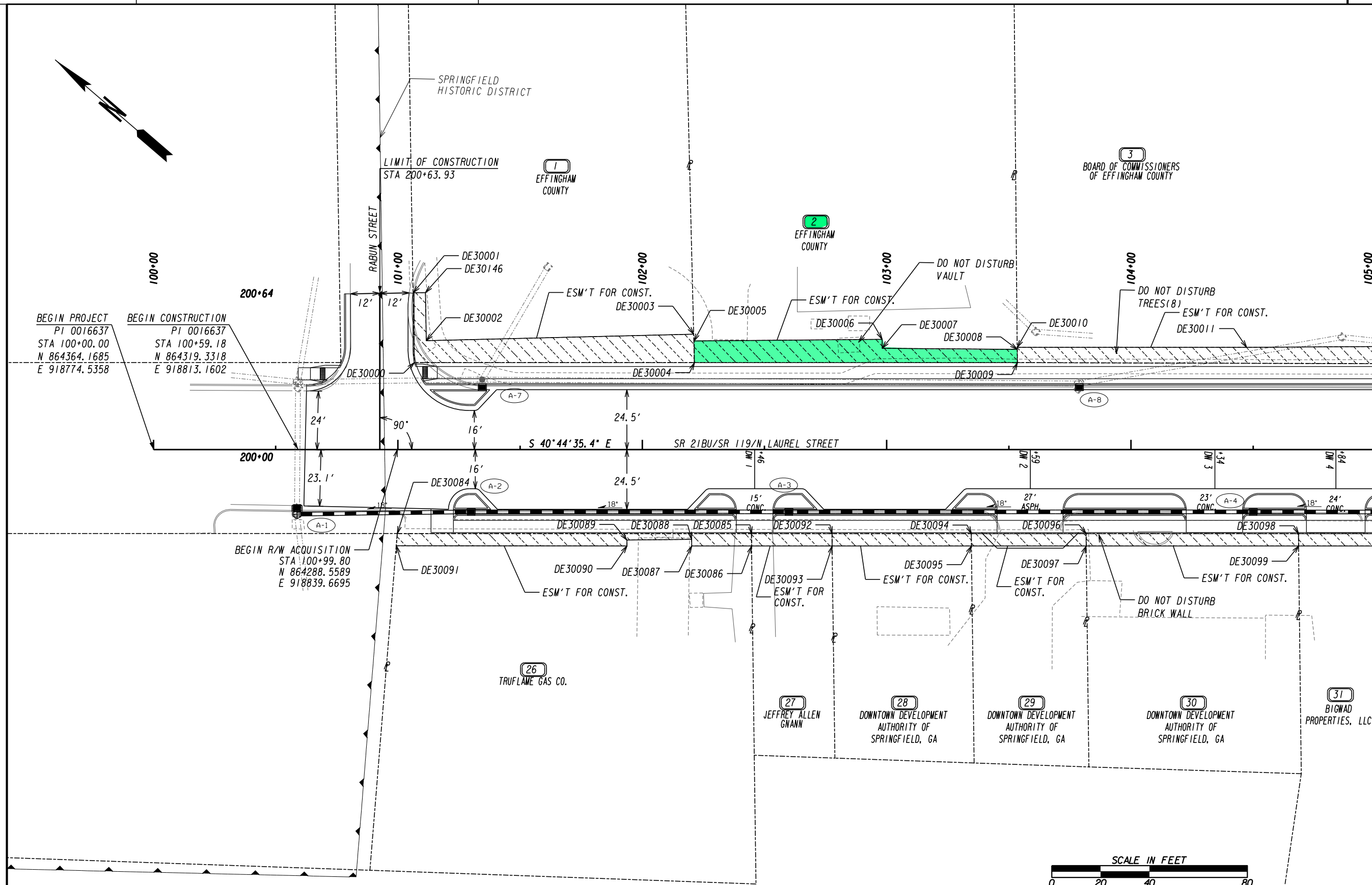
(Date)

ACCEPTED: DEPARTMENT OF TRANSPORTATION

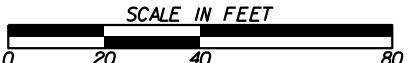
BY: _____

(Date)

Preliminary Plans



DRAWING No. 60-004
MATCH LINE STA. 105+00



PROPERTY AND EXISTING R/W LINE	---
REQUIRED R/W LINE	---
CONSTRUCTION LIMITS	---
EASEMENT FOR CONSTR & MAINTENANCE OF SLOPES	---C---F---
EASEMENT FOR CONSTR OF SLOPES	---G---H---
EASEMENT FOR CONSTR OF DRIVES	---I---J---

BEGIN LIMIT OF ACCESS.....BLA	---
END LIMIT OF ACCESS.....ELA	---
EXISTING LIMIT OF ACCESS	---
REQ'D LIMIT OF ACCESS	---
EXISTING LIMIT OF ACCESS & R/W	---
REQ'D LIMIT OF ACCESS & R/W	---
ORANGE BARRIER FENCE	---
ESA - ENV. SENSITIVE AREA	---

DATE	REVISIONS	DATE	REVISIONS
11/17/2025	DO NOT DISTURB VAULT NOTE ADDED TO PARCEL 2		
11/17/2025	DO NOT DISTURB TREES NOTE ADDED TO PARCEL 3		
11/17/2025	DO NOT DISTURB BRICK WALL NOTE ADDED TO PARCEL 30		

DATE	REVISIONS

STATE OF GEORGIA
DEPARTMENT OF TRANSPORTATION

RIGHT OF WAY PLANS

PROJECT NO: 0016637
COUNTY: EFFINGHAM
LAND LOT NO: N/A
LAND DISTRICT: N/A
GMD 11

DATE 11/22/24 SH 3 OF 10

DRAWING No.
60-002

Preliminary Plans

Parcel 1 ESM'T FOR CONST. REQ'D EASM'T DE300			
PNT	OFFSET/	STATION/	ALIGNMENT
DE30000	35.53 L	101+06.73	SR 21 BU/S Laurel St
DE30001	64.15 L	101+06.27	SR 21 BU/S Laurel St
DE30046	64.23 L	101+11.26	SR 21 BU/S Laurel St
DE30002	44.56 L	101+11.58	SR 21 BU/S Laurel St
DE30003	47.23 L	102+21.10	SR 21 BU/S Laurel St
DE30004	35.53 L	102+21.39	SR 21 BU/S Laurel St
DE30000	35.53 L	101+06.73	SR 21 BU/S Laurel St
REQD EASMT AREA = 1279.77 SF			

Parcel 2 ESM'T FOR CONST. REQ'D EASM'T DE301			
PNT	OFFSET/	STATION/	ALIGNMENT
DE30004	35.53 L	102+21.39	SR 21 BU/S Laurel St
DE30005	44.44 L	102+21.17	SR 21 BU/S Laurel St
DE30006	45.12 L	102+98.17	SR 21 BU/S Laurel St
DE30007	41.45 L	102+98.18	SR 21 BU/S Laurel St
DE30008	41.01 L	103+53.49	SR 21 BU/S Laurel St
DE30009	35.53 L	103+53.54	SR 21 BU/S Laurel St
DE30004	35.53 L	102+21.39	SR 21 BU/S Laurel St
REQD EASMT AREA = 1027.24 SF			

Parcel 3 ESM'T FOR CONST. REQ'D EASM'T DE302			
PNT	OFFSET/	STATION/	ALIGNMENT
DE30009	35.53 L	103+53.54	SR 21 BU/S Laurel St
DE30010	41.80 L	103+53.48	SR 21 BU/S Laurel St
DE30011	41.80 L	104+47.34	SR 21 BU/S Laurel St
DE30012	42.83 L	106+01.43	SR 21 BU/S Laurel St
DE30013	34.85 L	106+01.67	SR 21 BU/S Laurel St
DE30009	35.53 L	103+53.54	SR 21 BU/S Laurel St
REQD EASMT AREA = 1722.32 SF			

Parcel 4 ESM'T FOR CONST. REQ'D EASM'T DE303			
PNT	OFFSET/	STATION/	ALIGNMENT
DE30014	34.37 L	106+51.38	SR 21 BU/S Laurel St
DE30015	42.02 L	106+51.07	SR 21 BU/S Laurel St
DE30016	42.48 L	108+25.96	SR 21 BU/S Laurel St
DE30017	47.48 L	108+25.93	SR 21 BU/S Laurel St
DE30018	47.57 L	108+47.21	SR 21 BU/S Laurel St
DE30019	35.38 L	108+47.72	SR 21 BU/S Laurel St
DE30014	34.37 L	106+51.38	SR 21 BU/S Laurel St
REQD EASMT AREA = 1566.09 SF			

Parcel 5 ESM'T FOR CONST. Area 1 REQ'D EASM'T DE304			
PNT	OFFSET/	STATION/	ALIGNMENT
DE30020	35.46 L	108+97.76	SR 21 BU/S Laurel St
DE30021	40.46 L	108+97.55	SR 21 BU/S Laurel St
DE30022	40.39 L	109+16.77	SR 21 BU/S Laurel St
DE30023	35.13 L	109+16.68	SR 21 BU/S Laurel St
DE30020	35.46 L	108+97.76	SR 21 BU/S Laurel St
REQD EASMT AREA = 97.81 SF			

Parcel 5 ESM'T FOR CONST. Area 2 REQ'D EASM'T DE305			
PNT	OFFSET/	STATION/	ALIGNMENT
DE30024	34.86 L	109+32.45	SR 21 BU/S Laurel St
DE30025	40.32 L	109+32.55	SR 21 BU/S Laurel St
DE30026	40.25 L	109+50.77	SR 21 BU/S Laurel St
DE30027	34.54 L	109+50.84	SR 21 BU/S Laurel St
DE30024	34.86 L	109+32.45	SR 21 BU/S Laurel St
REQD EASMT AREA = 102.31 SF			

Parcel 6 ESM'T FOR CONST. REQ'D EASM'T DE306			
PNT	OFFSET/	STATION/	ALIGNMENT
DE30027	34.54 L	109+50.84	SR 21 BU/S Laurel St
DE30026	40.25 L	109+50.77	SR 21 BU/S Laurel St
DE30028	39.95 L	110+23.61	SR 21 BU/S Laurel St
DE30029	35.46 L	110+23.79	SR 21 BU/S Laurel St
DE30027	34.54 L	109+50.84	SR 21 BU/S Laurel St
REQD EASMT AREA = 372.03 SF			

Parcel 7 ESM'T FOR CONST. REQ'D EASM'T DE307			
PNT	OFFSET/	STATION/	ALIGNMENT
DE30029	35.46 L	110+23.79	SR 21 BU/S Laurel St
DE30147	40.46 L	110+23.59	SR 21 BU/S Laurel St
DE30030	40.46 L	111+10.21	SR 21 BU/S Laurel St
DE30031	35.46 L	111+10.31	SR 21 BU/S Laurel St
DE30029	35.46 L	110+23.79	SR 21 BU/S Laurel St
REQD EASMT AREA = 432.74 SF			

Parcel 8 ESM'T FOR CONST. REQ'D EASM'T DE308			
PNT	OFFSET/	STATION/	ALIGNMENT
DE30032	35.46 L	111+60.32	SR 21 BU/S Laurel St
DE30033	42.48 L	111+60.18	SR 21 BU/S Laurel St
DE30034	42.48 L	113+07.35	SR 21 BU/S Laurel St
DE30035	35.46 L	113+07.48	SR 21 BU/S Laurel St
DE30032	35.46 L	111+60.32	SR 21 BU/S Laurel St
REQD EASMT AREA = 1033.54 SF			

Parcel 9 ESM'T FOR CONST. REQ'D EASM'T DE309			
PNT	OFFSET/	STATION/	ALIGNMENT
DE30035	35.46 L	113+07.48	SR 21 BU/S Laurel St
DE30036	40.46 L	113+07.39	SR 21 BU/S Laurel St
DE30037	40.46 L	113+71.49	SR 21 BU/S Laurel St
DE30038	35.46 L	113+71.79	SR 21 BU/S Laurel St
DE30035	35.46 L	113+07.48	SR 21 BU/S Laurel St
REQD EASMT AREA = 321.05 SF			

Parcel 11 ESM'T FOR CONST. REQ'D EASM'T DE310			
PNT	OFFSET/	STATION/	ALIGNMENT
DE30039	34.90 L	129+59.27	SR 21 BU/S Laurel St
DE30040	39.90 L	129+59.29	SR 21 BU/S Laurel St
DE30041	40.29 L	131+36.23	SR 21 BU/S Laurel St
DE30042	35.46 L	131+36.16	SR 21 BU/S Laurel St
DE30039	34.90 L	129+59.27	SR 21 BU/S Laurel St
REQD EASMT AREA = 869.30 SF			

Parcel 12 ESM'T FOR CONST. REQ'D EASM'T DE311			
PNT	OFFSET/	STATION/	ALIGNMENT
DE30042	35.46 L	131+36.16	SR 21 BU/S Laurel St
DE30041	40.29 L	131+36.23	SR 21 BU/S Laurel St
DE30043	40.46 L	132+14.58	SR 21 BU/S Laurel St
DE30044	35.46 L	132+14.50	SR 21 BU/S Laurel St
DE30042	35.46 L	131+36.16	SR 21 BU/S Laurel St
REQD EASMT AREA = 384.97 SF			

Parcel 13 ESM'T FOR CONST. REQ'D EASM'T DE312			
PNT	OFFSET/	STATION/	ALIGNMENT
DE30045	35.46 L	132+64.51	SR 21 BU/S Laurel St
DE30046	38.76 L	132+64.56	SR 21 BU/S Laurel St
DE30047	38.80 L	133+13.26	SR 21 BU/S Laurel St
DE30048	35.46 L	133+13.28	SR 21 BU/S Laurel St
DE30045	35.46 L	132+64.51	SR 21 BU/S Laurel St
REQD EASMT AREA = 161.57 SF			

Parcel 14 ESM'T FOR CONST. REQ'D EASM'T DE313			
PNT	OFFSET/	STATION/	ALIGNMENT
DE30048	35.46 L	133+13.28	SR 21 BU/S Laurel St
DE30047	38.80 L	133+13.26	SR 21 BU/S Laurel St
DE30049	38.84 L	133+56.58	SR 21 BU/S Laurel St
DE30050	35.46 L	133+56.65	SR 21 BU/S Laurel St
DE30048	35.46 L	133+13.28	SR 21 BU/S Laurel St
REQD EASMT AREA = 145.46 SF			

Parcel 15 ESM'T FOR CONST. REQ'D EASM'T DE314			
PNT	OFFSET/	STATION/	ALIGNMENT
DE30050	35.46 L	133+56.65	SR 21 BU/S Laurel St
DE30049	38.84 L	133+56.58	SR 21 BU/S Laurel St
DE30051	38.88 L	133+97.30	SR 21 BU/S Laurel St
DE30052	35.46 L	133+97.32	SR 21 BU/S Laurel St
DE30050	35.46 L	133+56.65	SR 21 BU/S Laurel St
REQD EASMT AREA = 138.11 SF			

Parcel 16 ESM'T FOR CONST. REQ'D EASM'T DE315			
PNT	OFFSET/	STATION/	ALIGNMENT
DE30053	35.78 L	133+97.32	SR 21 BU/S Laurel St
DE30051	38.88 L	133+97.30	SR 21 BU/S Laurel St
DE30054	38.91 L	134+40.00	SR 21 BU/S Laurel St
DE30055	35.46 L	134+40.02	SR 21 BU/S Laurel St
DE30053	35.78 L	133+97.32	SR 21 BU/S Laurel St
REQD EASMT AREA = 139.77 SF			

Parcel 17 ESM'T FOR CONST. REQ'D EASM'T DE316			
PNT	OFFSET/	STATION/	ALIGNMENT
DE30055	35.46 L	134+40.02	SR 21 BU/S Laurel St
DE30054	38.91 L	134+40.00	SR 21 BU/S Laurel St
DE30056	38.95 L	134+82.70	SR 21 BU/S Laurel St
DE30057	35.46 L	134+82.72	SR 21 BU/S Laurel St
DE30055	35.46 L	134+40.02	SR 21 BU/S Laurel St
REQD EASMT AREA = 148.11 SF			

Parcel 18 ESM'T FOR CONST. REQ'D EASM'T DE317			
PNT	OFFSET/	STATION/	ALIGNMENT
DE30058	36.20 L	134+82.72	SR 21 BU/S Laurel St
DE30059	38.21 L	134+82.71	SR 21 BU/S Laurel St
DE30060	38.15 L	135+23.19	SR 21 BU/S Laurel St
DE30061	36.78 L	135+23.16	SR 21 BU/S Laurel St
DE30062	36.78 L	135+26.01	SR 21 BU/S Laurel St
DE30063	35.46 L	135+26.00	SR 21 BU/S Laurel St
DE30058	36.20 L	134+82.72	SR 21 BU/S Laurel St
REQD EASMT AREA = 97.79 SF			

Parcel 19 ESM'T FOR CONST. REQ'D EASM'T DE318			
PNT	OFFSET/	STATION/	ALIGNMENT
DE30063	35.46 L	135+26.00	SR 21 BU/S Laurel St
DE30062	36.78 L	135+26.01	SR 21 BU/S Laurel St
DE30064	36.81 L	135+71.24	SR 21 BU/S Laurel St
DE30065	35.46 L	135+71.25	SR 21 BU/S Laurel St
DE30063	35.46 L	135+26.00	SR 21 BU/S Laurel St
REQD EASMT AREA = 60.21 SF			

Parcel 20 ESM'T FOR CONST. REQ'D EASM'T DE319			
PNT	OFFSET/	STATION/	ALIGNMENT
DE30066	35.46 L	136+21.25	SR 21 BU/S Laurel St
DE30067	40.46 L	136+21.21	SR 21 BU/S Laurel St
DE30068	40.46 L	136+56.20	SR 21 BU/S Laurel St
DE30069	35.46 L	136+56.24	SR 21 BU/S Laurel St
DE30066	35.46 L	136+21.25	SR 21 BU/S Laurel St
REQD EASMT AREA = 174.80 SF			

Parcel 21 ESM'T FOR CONST. REQ'D EASM'T DE320			
PNT	OFFSET/	STATION/	ALIGNMENT
DE30069	35.46 L	136+56.24	SR 21 BU/S Laurel St
DE30068	40.46 L	136+56.20	SR 21 BU/S Laurel St
DE30070	40.45 L	137+48.74	SR 21 BU/S Laurel St
DE30071	35.45 L	137+49.18	SR 21 BU/S Laurel St
ARC LENGTH = 13.60 CHORD BEAR = N 39°16'34.1" W LNTH CHORD = 13.60 RADIUS = 2785.00 DEGREE = 2°03'26.3" 64 35.46 L 137+35.70 SR 21 BU/S Laurel St DE30069 35.46 L 136+56.24 SR 21 BU/S Laurel St REQD EASMT AREA = 462.66 SF			

Parcel 22 ESM'T FOR CONST. REQ'D EASM'T DE321			
PNT	OFFSET/	STATION/	ALIGNMENT
DE30071	35.45 L	137+49.18	SR 21 BU/S Laurel St
DE30070	40.45 L	137+48.74	SR 21 BU/S Laurel St
DE30072	40.44 L	137+56.10	SR 21 BU/S Laurel St
DE30073	35.44 L	137+56.10	SR 21 BU/S Laurel St
ARC LENGTH = 7.01 CHORD BEAR = N 39°03'50.8" W LNTH CHORD = 7.01 RADIUS = 2785.00 DEGREE = 2°03'26.3" DE30071 35.45 L 137+49.18 SR 21 BU/S Laurel St REQD EASMT AREA = 36.20 SF			

Parcel 23 ESM'T FOR CONST. REQ'D EASM'T DE322			
PNT	OFFSET/	STATION/	ALIGNMENT
DE30074	35.40 L	137+85.85	SR 21 BU/S Laurel St
DE30075	40.40 L	137+86.09	SR 21 BU/S Laurel St
ARC LENGTH = 96.52 CHORD BEAR = S 37°22'34.4" E LNTH CHORD = 96.51 RADIUS = 2790.00 DEGREE = 2°03'13.0" DE30076 40.28 L 138+81.21 SR 21 BU/S Laurel St DE30077 35.28 L 138+80.99 SR 21 BU/S Laurel St ARC LENGTH = 96.37 CHORD BEAR = N 37°22'50.7" W LNTH CHORD = 96.36 RADIUS = 2785.00 DEGREE = 2°03'26.3" DE30074 35.40 L 137+85.85 SR 21 BU/S Laurel St REQD EASMT AREA = 482.20 SF			

Parcel 24 ESM'T FOR CONST. REQ'D EASM'T DE323			
PNT	OFFSET/	STATION/	ALIGNMENT
DE30077	35.28 L	138+80.99	SR 21 BU/S Laurel St
DE30076	40.28 L	138+81.21	SR 21 BU/S Laurel St
ARC LENGTH = 73.00 CHORD BEAR = S 35°38'08.3" E LNTH CHORD = 73.00 RADIUS = 2790.00 DEGREE = 2°03'13.0" DE30078 40.19 L 139+53.15 SR 21 BU/S Laurel St DE30079 35.19 L 139+52.73 SR 21 BU/S Laurel St ARC LENGTH = 72.66 CHORD BEAR = N 35°38'31.7" W LNTH CHORD = 72.65 RADIUS = 2785.00 DEGREE = 2°03'26.3" DE30077 35.28 L 138+80.99 SR 21 BU/S Laurel St REQD EASMT AREA = 364.13 SF			

Parcel 25 ESM'T FOR CONST. REQ'D EASM'T DE324			
PNT	OFFSET/	STATION/	ALIGNMENT
DE30080	35.14 L	139+92.34	SR 21 BU/S Laurel St
DE30081	40.14 L	139+92.69	SR 21 BU/S Laurel St
ARC LENGTH = 107.36 CHORD BEAR = S 32°57'35.3" E LNTH CHORD = 107.36 RADIUS = 2790.00 DEGREE = 2°03'13.0" DE30082 40.01 L 140+98.51 SR 21 BU/S Laurel St DE30083 35.01 L 140+95.33 SR 21 BU/S Laurel St ARC LENGTH = 104.30 CHORD BEAR = N 32°59'47.3" W LNTH CHORD = 104.30 RADIUS = 2785.00 DEGREE = 2°03'26.3" DE30080 35.14 L 139+92.34 SR 21 BU/S Laurel St REQD EASMT AREA = 529.16 SF			

Parcel 26 ESM'T FOR CONST. REQ'D EASM'T DE325			
PNT	OFFSET/	STATION/	ALIGNMENT
DE30084	34.40 R	100+99.80	SR 21 BU/S Laurel St
DE30085	34.47 R	102+44.69	SR 21 BU/S Laurel St
DE30086	39.50 R	102+44.75	SR 21 BU/S Laurel St
DE30087	39.48 R	102+20.25	SR 21 BU/S Laurel St
DE30088	36.73 R	102+20.18	SR 21 BU/S Laurel St
DE30089	37.03 R	101+93.67	SR 21 BU/S Laurel St
DE30090	39.45 R	101+93.76	SR 21 BU/S Laurel St
DE30091	39.40 R	100+99.39	SR 21 BU/S Laurel St
DE30084	34.40 R	100+99.80	SR 21 BU/S Laurel St
REQD EASMT AREA = 658.43 SF			

Parcel 27 ESM'T FOR CONST. REQ'D EASM'T DE326			
PNT	OFFSET/	STATION/	ALIGNMENT
DE30085	34.47 R	102+44.69	SR 21 BU/S Laurel St
DE30092	34.47 R	102+77.68	SR 21 BU/S Laurel St
DE30093	39.49 R	102+77.74	SR 21 BU/S Laurel St
DE30086	39.50 R	102+44.75	SR 21 BU/S Laurel St
DE30085	34.47 R	102+44.69	SR 21 BU/S Laurel St
REQD EASMT AREA = 165.66 SF			

Parcel 28 ESM'T FOR CONST. REQ'D EASM'T DE327			
PNT	OFFSET/	STATION/	ALIGNMENT
DE30092	34.47 R	102+77.68	SR 21 BU/S Laurel St