

OPTION TO PURCHASE

GA DOT P.I. Number: 0016637 Parcel # 3

Tax Parcel ID # S1010021

Property Location: 700 N. Pine Street, Springfield, GA 31329

GEORGIA, EFFINGHAM COUNTY

For and in consideration of the sum of One Dollar (\$1.00), receipt whereof being acknowledged, the undersigned grants to The City of Springfield, Georgia an option to acquire the following described real estate:

Right of Way and/or Easement rights through that tract or parcel of land located in Land Lots 1, 2, 3, 4 & 5, Block 5 of the 11th District, N/A Section or GMD N/A of Effingham County, Georgia, and being more particularly described on Exhibit "A" attached hereto and made a part hereof by reference.

For the sum of **\$DONATION**, the undersigned agrees to execute and deliver to The City of Springfield, Georgia easements to the lands owned by the undersigned as reflected on the attached Exhibit "A".

* * * * *

The following conditions are imposed upon the grant of this option:

- 1) This option shall extend for 90 days from this date.
- 2) The consideration recited is full payment for the rights conveyed.

N/A Square Feet of Right of Way

N/A Linear Feet of Limited Access

N/A Square Feet of Construction and Maintenance Easement (Permanent)

1,722.32 Square Feet of Construction Easement (Temporary)

3) All Temporary Easements will terminate upon completion and acceptance of the same by the City.

- 4) The undersigned shall obtain all quit claim deeds or releases from any tenant now in possession and any other parties having a claim or interest in the property described above.
- 5) Special Provisions, if any, are listed on Exhibit "B", which is attached hereto and incorporated herein by reference.

Witness my hand and seal this _____ day of _____, 2025.

Signed, Sealed and Delivered
in the presence of:

Effingham County Board of County Commissioners

By: _____

Witness

By: _____

Notary Public (Seal)

OPTION TO PURCHASE

GA DOT P.I. Number: 0016637 Parcel # 3

Tax Parcel ID # S1010021

Property Location: 700 N. Pine Street, Springfield, GA 31329

ACCEPTED BY:

CITY OF SPRINGFIELD, GEORGIA

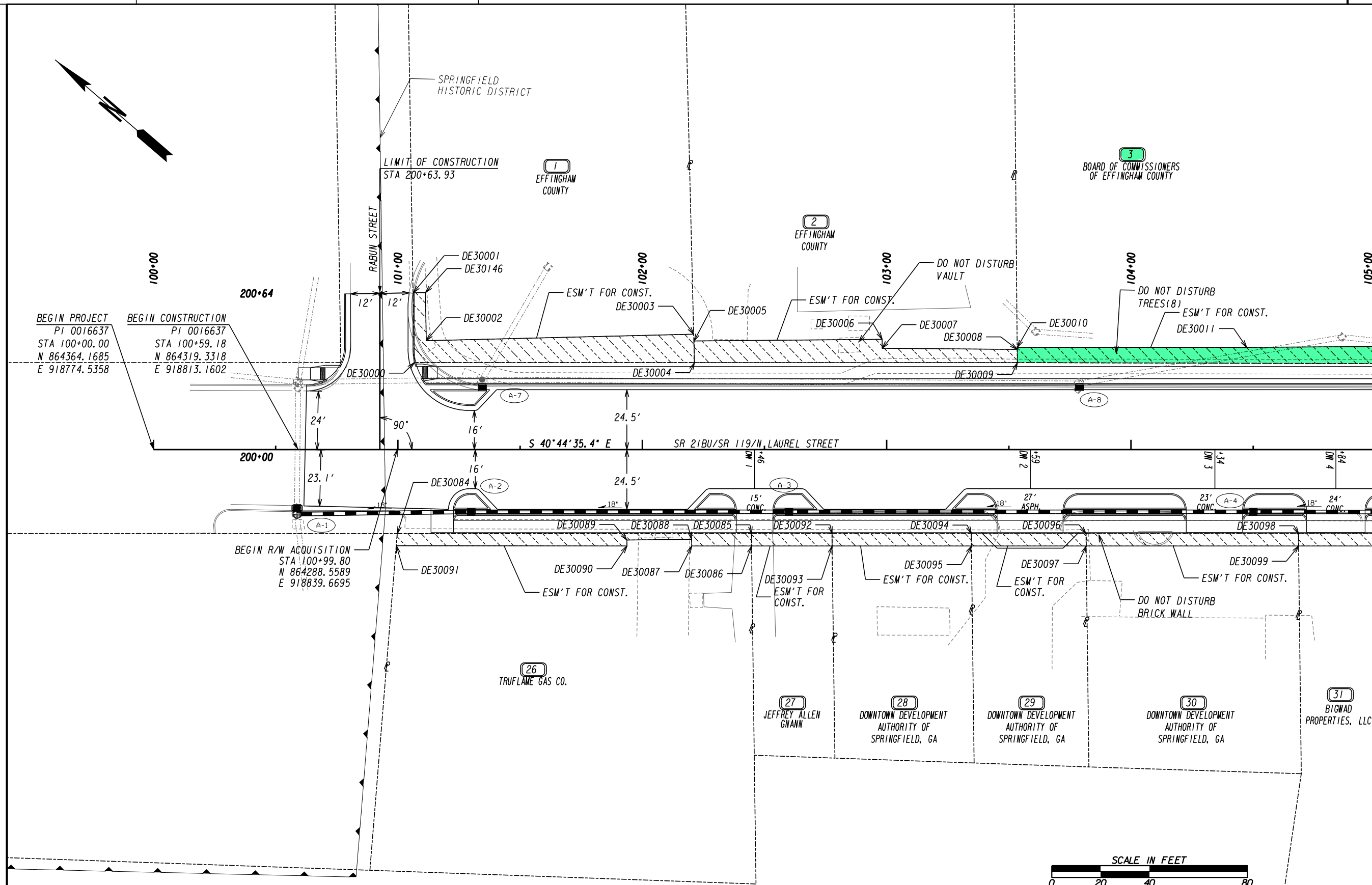
(Date)

ACCEPTED: DEPARTMENT OF TRANSPORTATION

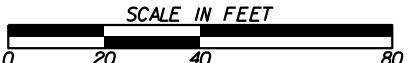
BY: _____

(Date)

Preliminary Plans



DRAWING No. 60-0004
MATCH LINE STA. 105+00



| | |
|--------------------------------|-----|
| PROPERTY AND EXISTING R/W LINE | --- |
| REQUIRED R/W LINE | --- |
| CONSTRUCTION LIMITS | --- |
| EASEMENT FOR CONSTR | --- |
| & MAINTENANCE OF SLOPES | --- |
| EASEMENT FOR CONSTR OF SLOPES | --- |
| EASEMENT FOR CONSTR OF DRIVES | --- |

| | |
|--------------------------------|-----|
| BEGIN LIMIT OF ACCESS.....BLA | --- |
| END LIMIT OF ACCESS.....ELA | --- |
| EXISTING LIMIT OF ACCESS | --- |
| REQ'D LIMIT OF ACCESS | --- |
| EXISTING LIMIT OF ACCESS & R/W | --- |
| REQ'D LIMIT OF ACCESS & R/W | --- |
| ORANGE BARRIER FENCE | --- |
| ESA - ENV. SENSITIVE AREA | --- |

| DATE | REVISIONS | DATE | REVISIONS |
|------------|---------------------------------------------------|------|-----------|
| 11/17/2025 | DO NOT DISTURB VAULT NOTE ADDED TO PARCEL 2 | | |
| 11/17/2025 | DO NOT DISTURB TREES NOTE ADDED TO PARCEL 3 | | |
| 11/17/2025 | DO NOT DISTURB BRICK WALL NOTE ADDED TO PARCEL 30 | | |

| DATE | REVISIONS |
|------|-----------|
| | |
| | |
| | |

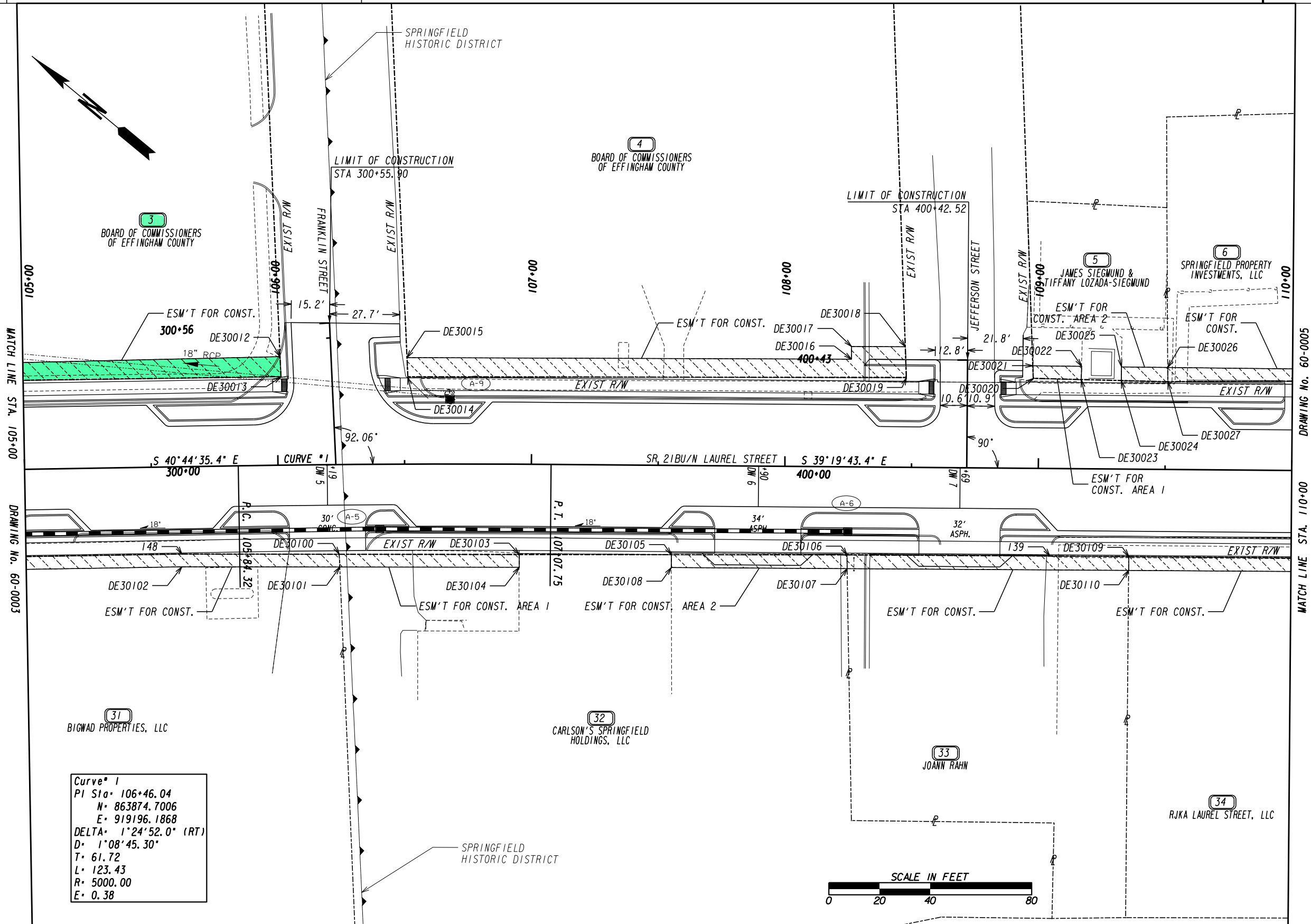
STATE OF GEORGIA
DEPARTMENT OF TRANSPORTATION

RIGHT OF WAY PLANS

PROJECT NO: 0016637
COUNTY: EFFINGHAM
LAND LOT NO: N/A
LAND DISTRICT: N/A
GMD 11
DATE 11/22/24 SH 3 OF 10

DRAWING No.
60-0002

Preliminary Plans



Curve # 1
 PI Sta: 106+46.04
 N: 863874.7006
 E: 919196.1868
 DELTA: 1°24'52.0" (RT)
 D: 1°08'45.30"
 T: 61.72
 L: 123.43
 R: 5000.00
 E: 0.38

| | |
|---------------------------------------------|-----|
| PROPERTY AND EXISTING R/W LINE | --- |
| REQUIRED R/W LINE | --- |
| CONSTRUCTION LIMITS | --- |
| EASEMENT FOR CONSTR & MAINTENANCE OF SLOPES | --- |
| EASEMENT FOR CONSTR OF SLOPES | --- |
| EASEMENT FOR CONSTR OF DRIVES | --- |

| | |
|--------------------------------|-----|
| BEGIN LIMIT OF ACCESS.....BLA | --- |
| END LIMIT OF ACCESS.....ELA | --- |
| EXISTING LIMIT OF ACCESS | --- |
| REQ'D LIMIT OF ACCESS | --- |
| EXISTING LIMIT OF ACCESS & R/W | --- |
| REQ'D LIMIT OF ACCESS & R/W | --- |
| ORANGE BARRIER FENCE | --- |
| ESA - ENV. SENSITIVE AREA | --- |

| DATE | REVISIONS | DATE | REVISIONS |
|------|-----------|------|-----------|
| | | | |
| | | | |
| | | | |
| | | | |

| DATE | REVISIONS | DATE | REVISIONS |
|------|-----------|------|-----------|
| | | | |
| | | | |
| | | | |
| | | | |

STATE OF GEORGIA
 DEPARTMENT OF TRANSPORTATION
RIGHT OF WAY PLANS

PROJECT NO: 0016637
 COUNTY: EFFINGHAM
 LAND LOT NO: N/A
 LAND DISTRICT: N/A
 GMD 11
 DATE 11/22/24 SH 4 OF 10

DRAWING No.
60-0003

Preliminary Plans

Parcel 1 ESM'T FOR CONST. REQ'D EASM'T DE300

| PNT | OFFSET/ | STATION/ | ALIGNMENT |
|------------------------------|---------|-----------|----------------------|
| DE30000 | 35.53 L | 101+06.73 | SR 21 BU/S Laurel St |
| DE30001 | 64.15 L | 101+06.27 | SR 21 BU/S Laurel St |
| DE30046 | 64.23 L | 101+11.26 | SR 21 BU/S Laurel St |
| DE30002 | 44.56 L | 101+11.58 | SR 21 BU/S Laurel St |
| DE30003 | 47.23 L | 102+21.10 | SR 21 BU/S Laurel St |
| DE30004 | 35.53 L | 102+21.39 | SR 21 BU/S Laurel St |
| DE30000 | 35.53 L | 101+06.73 | SR 21 BU/S Laurel St |
| REQD EASMT AREA = 1279.77 SF | | | |

Parcel 2 ESM'T FOR CONST. REQ'D EASM'T DE301

| PNT | OFFSET/ | STATION/ | ALIGNMENT |
|------------------------------|---------|-----------|----------------------|
| DE30004 | 35.53 L | 102+21.39 | SR 21 BU/S Laurel St |
| DE30005 | 44.44 L | 102+21.17 | SR 21 BU/S Laurel St |
| DE30006 | 45.12 L | 102+98.17 | SR 21 BU/S Laurel St |
| DE30007 | 41.45 L | 102+98.18 | SR 21 BU/S Laurel St |
| DE30008 | 41.01 L | 103+53.49 | SR 21 BU/S Laurel St |
| DE30009 | 35.53 L | 103+53.54 | SR 21 BU/S Laurel St |
| DE30004 | 35.53 L | 102+21.39 | SR 21 BU/S Laurel St |
| REQD EASMT AREA = 1027.24 SF | | | |

Parcel 3 ESM'T FOR CONST. REQ'D EASM'T DE302

| PNT | OFFSET/ | STATION/ | ALIGNMENT |
|------------------------------|---------|-----------|----------------------|
| DE30009 | 35.53 L | 103+53.54 | SR 21 BU/S Laurel St |
| DE30010 | 41.80 L | 103+53.48 | SR 21 BU/S Laurel St |
| DE30011 | 41.80 L | 104+47.34 | SR 21 BU/S Laurel St |
| DE30012 | 42.83 L | 106+01.43 | SR 21 BU/S Laurel St |
| DE30013 | 34.85 L | 106+01.67 | SR 21 BU/S Laurel St |
| DE30009 | 35.53 L | 103+53.54 | SR 21 BU/S Laurel St |
| REQD EASMT AREA = 1722.32 SF | | | |

Parcel 4 ESM'T FOR CONST. REQ'D EASM'T DE303

| PNT | OFFSET/ | STATION/ | ALIGNMENT |
|------------------------------|---------|-----------|----------------------|
| DE30014 | 34.37 L | 106+51.38 | SR 21 BU/S Laurel St |
| DE30015 | 42.02 L | 106+51.07 | SR 21 BU/S Laurel St |
| DE30016 | 42.48 L | 108+25.96 | SR 21 BU/S Laurel St |
| DE30017 | 47.48 L | 108+25.93 | SR 21 BU/S Laurel St |
| DE30018 | 47.57 L | 108+47.21 | SR 21 BU/S Laurel St |
| DE30019 | 35.38 L | 108+47.72 | SR 21 BU/S Laurel St |
| DE30014 | 34.37 L | 106+51.38 | SR 21 BU/S Laurel St |
| REQD EASMT AREA = 1566.09 SF | | | |

Parcel 5 ESM'T FOR CONST. Area 1 REQ'D EASM'T DE304

| PNT | OFFSET/ | STATION/ | ALIGNMENT |
|----------------------------|---------|-----------|----------------------|
| DE30020 | 35.46 L | 108+97.76 | SR 21 BU/S Laurel St |
| DE30021 | 40.46 L | 108+97.55 | SR 21 BU/S Laurel St |
| DE30022 | 40.39 L | 109+16.77 | SR 21 BU/S Laurel St |
| DE30023 | 35.13 L | 109+16.68 | SR 21 BU/S Laurel St |
| DE30020 | 35.46 L | 108+97.76 | SR 21 BU/S Laurel St |
| REQD EASMT AREA = 97.81 SF | | | |

Parcel 5 ESM'T FOR CONST. Area 2 REQ'D EASM'T DE305

| PNT | OFFSET/ | STATION/ | ALIGNMENT |
|-----------------------------|---------|-----------|----------------------|
| DE30024 | 34.86 L | 109+32.45 | SR 21 BU/S Laurel St |
| DE30025 | 40.32 L | 109+32.55 | SR 21 BU/S Laurel St |
| DE30026 | 40.25 L | 109+50.77 | SR 21 BU/S Laurel St |
| DE30027 | 34.54 L | 109+50.84 | SR 21 BU/S Laurel St |
| DE30024 | 34.86 L | 109+32.45 | SR 21 BU/S Laurel St |
| REQD EASMT AREA = 102.31 SF | | | |

Parcel 6 ESM'T FOR CONST. REQ'D EASM'T DE306

| PNT | OFFSET/ | STATION/ | ALIGNMENT |
|-----------------------------|---------|-----------|----------------------|
| DE30027 | 34.54 L | 109+50.84 | SR 21 BU/S Laurel St |
| DE30026 | 40.25 L | 109+50.77 | SR 21 BU/S Laurel St |
| DE30028 | 39.95 L | 110+23.61 | SR 21 BU/S Laurel St |
| DE30029 | 35.46 L | 110+23.79 | SR 21 BU/S Laurel St |
| DE30027 | 34.54 L | 109+50.84 | SR 21 BU/S Laurel St |
| REQD EASMT AREA = 372.03 SF | | | |

Parcel 7 ESM'T FOR CONST. REQ'D EASM'T DE307

| PNT | OFFSET/ | STATION/ | ALIGNMENT |
|-----------------------------|---------|-----------|----------------------|
| DE30029 | 35.46 L | 110+23.79 | SR 21 BU/S Laurel St |
| DE30047 | 40.46 L | 110+23.59 | SR 21 BU/S Laurel St |
| DE30030 | 40.46 L | 111+10.21 | SR 21 BU/S Laurel St |
| DE30031 | 35.46 L | 111+10.31 | SR 21 BU/S Laurel St |
| DE30029 | 35.46 L | 110+23.79 | SR 21 BU/S Laurel St |
| REQD EASMT AREA = 432.74 SF | | | |

Parcel 8 ESM'T FOR CONST. REQ'D EASM'T DE308

| PNT | OFFSET/ | STATION/ | ALIGNMENT |
|------------------------------|---------|-----------|----------------------|
| DE30032 | 35.46 L | 111+60.32 | SR 21 BU/S Laurel St |
| DE30033 | 42.48 L | 111+60.18 | SR 21 BU/S Laurel St |
| DE30034 | 42.48 L | 113+07.35 | SR 21 BU/S Laurel St |
| DE30035 | 35.46 L | 113+07.48 | SR 21 BU/S Laurel St |
| DE30032 | 35.46 L | 111+60.32 | SR 21 BU/S Laurel St |
| REQD EASMT AREA = 1033.54 SF | | | |

Parcel 9 ESM'T FOR CONST. REQ'D EASM'T DE309

| PNT | OFFSET/ | STATION/ | ALIGNMENT |
|-----------------------------|---------|-----------|----------------------|
| DE30035 | 35.46 L | 113+07.48 | SR 21 BU/S Laurel St |
| DE30036 | 40.46 L | 113+07.39 | SR 21 BU/S Laurel St |
| DE30037 | 40.46 L | 113+71.49 | SR 21 BU/S Laurel St |
| DE30038 | 35.46 L | 113+71.79 | SR 21 BU/S Laurel St |
| DE30035 | 35.46 L | 113+07.48 | SR 21 BU/S Laurel St |
| REQD EASMT AREA = 321.05 SF | | | |

Parcel 11 ESM'T FOR CONST. REQ'D EASM'T DE310

| PNT | OFFSET/ | STATION/ | ALIGNMENT |
|-----------------------------|---------|-----------|----------------------|
| DE30039 | 34.90 L | 129+59.27 | SR 21 BU/S Laurel St |
| DE30040 | 39.90 L | 129+59.29 | SR 21 BU/S Laurel St |
| DE30041 | 40.29 L | 131+36.23 | SR 21 BU/S Laurel St |
| DE30042 | 35.46 L | 131+36.16 | SR 21 BU/S Laurel St |
| DE30039 | 34.90 L | 129+59.27 | SR 21 BU/S Laurel St |
| REQD EASMT AREA = 869.30 SF | | | |

Parcel 12 ESM'T FOR CONST. REQ'D EASM'T DE311

| PNT | OFFSET/ | STATION/ | ALIGNMENT |
|-----------------------------|---------|-----------|----------------------|
| DE30042 | 35.46 L | 131+36.16 | SR 21 BU/S Laurel St |
| DE30041 | 40.29 L | 131+36.23 | SR 21 BU/S Laurel St |
| DE30043 | 40.46 L | 132+14.58 | SR 21 BU/S Laurel St |
| DE30044 | 35.46 L | 132+14.50 | SR 21 BU/S Laurel St |
| DE30042 | 35.46 L | 131+36.16 | SR 21 BU/S Laurel St |
| REQD EASMT AREA = 384.97 SF | | | |

Parcel 13 ESM'T FOR CONST. REQ'D EASM'T DE312

| PNT | OFFSET/ | STATION/ | ALIGNMENT |
|-----------------------------|---------|-----------|----------------------|
| DE30045 | 35.46 L | 132+64.51 | SR 21 BU/S Laurel St |
| DE30046 | 38.76 L | 132+64.56 | SR 21 BU/S Laurel St |
| DE30047 | 38.80 L | 133+13.26 | SR 21 BU/S Laurel St |
| DE30048 | 35.46 L | 133+13.28 | SR 21 BU/S Laurel St |
| DE30045 | 35.46 L | 132+64.51 | SR 21 BU/S Laurel St |
| REQD EASMT AREA = 161.57 SF | | | |

Parcel 14 ESM'T FOR CONST. REQ'D EASM'T DE313

| PNT | OFFSET/ | STATION/ | ALIGNMENT |
|-----------------------------|---------|-----------|----------------------|
| DE30048 | 35.46 L | 133+13.28 | SR 21 BU/S Laurel St |
| DE30047 | 38.80 L | 133+13.26 | SR 21 BU/S Laurel St |
| DE30049 | 38.84 L | 133+56.58 | SR 21 BU/S Laurel St |
| DE30050 | 35.46 L | 133+56.65 | SR 21 BU/S Laurel St |
| DE30048 | 35.46 L | 133+13.28 | SR 21 BU/S Laurel St |
| REQD EASMT AREA = 145.46 SF | | | |

Parcel 15 ESM'T FOR CONST. REQ'D EASM'T DE314

| PNT | OFFSET/ | STATION/ | ALIGNMENT |
|-----------------------------|---------|-----------|----------------------|
| DE30050 | 35.46 L | 133+56.65 | SR 21 BU/S Laurel St |
| DE30049 | 38.84 L | 133+56.58 | SR 21 BU/S Laurel St |
| DE30051 | 38.88 L | 133+97.30 | SR 21 BU/S Laurel St |
| DE30052 | 35.46 L | 133+97.32 | SR 21 BU/S Laurel St |
| DE30050 | 35.46 L | 133+56.65 | SR 21 BU/S Laurel St |
| REQD EASMT AREA = 138.11 SF | | | |

Parcel 16 ESM'T FOR CONST. REQ'D EASM'T DE315

| PNT | OFFSET/ | STATION/ | ALIGNMENT |
|-----------------------------|---------|-----------|----------------------|
| DE30053 | 35.78 L | 133+97.32 | SR 21 BU/S Laurel St |
| DE30051 | 38.88 L | 133+97.30 | SR 21 BU/S Laurel St |
| DE30054 | 38.91 L | 134+40.00 | SR 21 BU/S Laurel St |
| DE30055 | 35.46 L | 134+40.02 | SR 21 BU/S Laurel St |
| DE30053 | 35.78 L | 133+97.32 | SR 21 BU/S Laurel St |
| REQD EASMT AREA = 139.77 SF | | | |

Parcel 17 ESM'T FOR CONST. REQ'D EASM'T DE316

| PNT | OFFSET/ | STATION/ | ALIGNMENT |
|-----------------------------|---------|-----------|----------------------|
| DE30055 | 35.46 L | 134+40.02 | SR 21 BU/S Laurel St |
| DE30054 | 38.91 L | 134+40.00 | SR 21 BU/S Laurel St |
| DE30056 | 38.95 L | 134+82.70 | SR 21 BU/S Laurel St |
| DE30057 | 35.46 L | 134+82.72 | SR 21 BU/S Laurel St |
| DE30055 | 35.46 L | 134+40.02 | SR 21 BU/S Laurel St |
| REQD EASMT AREA = 148.11 SF | | | |

Parcel 18 ESM'T FOR CONST. REQ'D EASM'T DE317

| PNT | OFFSET/ | STATION/ | ALIGNMENT |
|----------------------------|---------|-----------|----------------------|
| DE30058 | 36.20 L | 134+82.72 | SR 21 BU/S Laurel St |
| DE30059 | 38.21 L | 134+82.71 | SR 21 BU/S Laurel St |
| DE30060 | 38.15 L | 135+23.19 | SR 21 BU/S Laurel St |
| DE30061 | 36.78 L | 135+23.16 | SR 21 BU/S Laurel St |
| DE30062 | 36.78 L | 135+26.01 | SR 21 BU/S Laurel St |
| DE30063 | 35.46 L | 135+26.00 | SR 21 BU/S Laurel St |
| DE30058 | 36.20 L | 134+82.72 | SR 21 BU/S Laurel St |
| REQD EASMT AREA = 97.79 SF | | | |

Parcel 19 ESM'T FOR CONST. REQ'D EASM'T DE318

| PNT | OFFSET/ | STATION/ | ALIGNMENT |
|----------------------------|---------|-----------|----------------------|
| DE30063 | 35.46 L | 135+26.00 | SR 21 BU/S Laurel St |
| DE30062 | 36.78 L | 135+26.01 | SR 21 BU/S Laurel St |
| DE30064 | 36.81 L | 135+71.24 | SR 21 BU/S Laurel St |
| DE30065 | 35.46 L | 135+71.25 | SR 21 BU/S Laurel St |
| DE30063 | 35.46 L | 135+26.00 | SR 21 BU/S Laurel St |
| REQD EASMT AREA = 60.21 SF | | | |

Parcel 20 ESM'T FOR CONST. REQ'D EASM'T DE319

| PNT | OFFSET/ | STATION/ | ALIGNMENT |
|-----------------------------|---------|-----------|----------------------|
| DE30066 | 35.46 L | 136+21.25 | SR 21 BU/S Laurel St |
| DE30067 | 40.46 L | 136+21.21 | SR 21 BU/S Laurel St |
| DE30068 | 40.46 L | 136+56.20 | SR 21 BU/S Laurel St |
| DE30069 | 35.46 L | 136+56.24 | SR 21 BU/S Laurel St |
| DE30066 | 35.46 L | 136+21.25 | SR 21 BU/S Laurel St |
| REQD EASMT AREA = 174.80 SF | | | |

Parcel 21 ESM'T FOR CONST. REQ'D EASM'T DE320

| PNT | OFFSET/ | STATION/ | ALIGNMENT |
|---------------------------------------------------------------------------------------------------------------------------------------------------------------------------------------------------------------------------------------------------|---------|-----------|----------------------|
| DE30069 | 35.46 L | 136+56.24 | SR 21 BU/S Laurel St |
| DE30068 | 40.46 L | 136+56.20 | SR 21 BU/S Laurel St |
| DE30070 | 40.45 L | 137+48.74 | SR 21 BU/S Laurel St |
| DE30071 | 35.45 L | 137+49.18 | SR 21 BU/S Laurel St |
| ARC LENGTH = 13.60 CHORD BEAR = N 39°16'34.1" W LNTH CHORD = 13.60 RADIUS = 2785.00 DEGREE = 2°03'26.3" 64 35.46 L 137+35.70 SR 21 BU/S Laurel St DE30069 35.46 L 136+56.24 SR 21 BU/S Laurel St REQD EASMT AREA = 462.66 SF | | | |

Parcel 22 ESM'T FOR CONST. REQ'D EASM'T DE321

| PNT | OFFSET/ | STATION/ | ALIGNMENT |
|---------------------------------------------------------------------------------------------------------------------------------------------------------------------------------------------------|---------|-----------|----------------------|
| DE30071 | 35.45 L | 137+49.18 | SR 21 BU/S Laurel St |
| DE30070 | 40.45 L | 137+48.74 | SR 21 BU/S Laurel St |
| DE30072 | 40.44 L | 137+56.10 | SR 21 BU/S Laurel St |
| DE30073 | 35.44 L | 137+56.10 | SR 21 BU/S Laurel St |
| ARC LENGTH = 7.01 CHORD BEAR = N 39°03'50.8" W LNTH CHORD = 7.01 RADIUS = 2785.00 DEGREE = 2°03'26.3" DE30071 35.45 L 137+49.18 SR 21 BU/S Laurel St REQD EASMT AREA = 36.20 SF | | | |

Parcel 23 ESM'T FOR CONST. REQ'D EASM'T DE322

| PNT | OFFSET/ | STATION/ | ALIGNMENT |
|---------------------------------------------------------------------------------------------------------------------------------------------------------------------------------------------------------------------------------------------------------------------------------------------------------------------------------------------------------------------------------------------------------------------------------|---------|-----------|----------------------|
| DE30074 | 35.40 L | 137+85.85 | SR 21 BU/S Laurel St |
| DE30075 | 40.40 L | 137+86.09 | SR 21 BU/S Laurel St |
| ARC LENGTH = 96.52 CHORD BEAR = S 37°22'34.4" E LNTH CHORD = 96.51 RADIUS = 2790.00 DEGREE = 2°03'13.0" DE30076 40.28 L 138+81.21 SR 21 BU/S Laurel St DE30077 35.28 L 138+80.99 SR 21 BU/S Laurel St ARC LENGTH = 96.37 CHORD BEAR = N 37°22'50.7" W LNTH CHORD = 96.36 RADIUS = 2785.00 DEGREE = 2°03'26.3" DE30074 35.40 L 137+85.85 SR 21 BU/S Laurel St REQD EASMT AREA = 482.20 SF | | | |

Parcel 24 ESM'T FOR CONST. REQ'D EASM'T DE323

| PNT | OFFSET/ | STATION/ | ALIGNMENT |
|---------------------------------------------------------------------------------------------------------------------------------------------------------------------------------------------------------------------------------------------------------------------------------------------------------------------------------------------------------------------------------------------------------------------------------|---------|-----------|----------------------|
| DE30077 | 35.28 L | 138+80.99 | SR 21 BU/S Laurel St |
| DE30076 | 40.28 L | 138+81.21 | SR 21 BU/S Laurel St |
| ARC LENGTH = 73.00 CHORD BEAR = S 35°38'08.3" E LNTH CHORD = 73.00 RADIUS = 2790.00 DEGREE = 2°03'13.0" DE30078 40.19 L 139+53.15 SR 21 BU/S Laurel St DE30079 35.19 L 139+52.73 SR 21 BU/S Laurel St ARC LENGTH = 72.66 CHORD BEAR = N 35°38'31.7" W LNTH CHORD = 72.65 RADIUS = 2785.00 DEGREE = 2°03'26.3" DE30077 35.28 L 138+80.99 SR 21 BU/S Laurel St REQD EASMT AREA = 364.13 SF | | | |

Parcel 25 ESM'T FOR CONST. REQ'D EASM'T DE324

| PNT | OFFSET/ | STATION/ | ALIGNMENT |
|-------------------------------------------------------------------------------------------------------------------------------------------------------------------------------------------------------------------------------------------------------------------------------------------------------------------------------------------------------------------------------------------------------------------------------------|---------|-----------|----------------------|
| DE30080 | 35.14 L | 139+92.34 | SR 21 BU/S Laurel St |
| DE30081 | 40.14 L | 139+92.69 | SR 21 BU/S Laurel St |
| ARC LENGTH = 107.36 CHORD BEAR = S 32°57'35.3" E LNTH CHORD = 107.36 RADIUS = 2790.00 DEGREE = 2°03'13.0" DE30082 40.01 L 140+98.51 SR 21 BU/S Laurel St DE30083 35.01 L 140+95.33 SR 21 BU/S Laurel St ARC LENGTH = 104.30 CHORD BEAR = N 32°59'47.3" W LNTH CHORD = 104.30 RADIUS = 2785.00 DEGREE = 2°03'26.3" DE30080 35.14 L 139+92.34 SR 21 BU/S Laurel St REQD EASMT AREA = 529.16 SF | | | |

Parcel 26 ESM'T FOR CONST. REQ'D EASM'T DE325

| PNT | OFFSET/ | STATION/ | ALIGNMENT |
|-----------------------------|---------|-----------|----------------------|
| DE30084 | 34.40 R | 100+99.80 | SR 21 BU/S Laurel St |
| DE30085 | 34.47 R | 102+44.69 | SR 21 BU/S Laurel St |
| DE30086 | 39.50 R | 102+44.75 | SR 21 BU/S Laurel St |
| DE30087 | 39.48 R | 102+20.25 | SR 21 BU/S Laurel St |
| DE30088 | 36.73 R | 102+20.18 | SR 21 BU/S Laurel St |
| DE30089 | 37.03 R | 101+93.67 | SR 21 BU/S Laurel St |
| DE30090 | 39.45 R | 101+93.76 | SR 21 BU/S Laurel St |
| DE30091 | 39.40 R | 100+99.39 | SR 21 BU/S Laurel St |
| DE30084 | 34.40 R | 100+99.80 | SR 21 BU/S Laurel St |
| REQD EASMT AREA = 658.43 SF | | | |

Parcel 27 ESM'T FOR CONST. REQ'D EASM'T DE326

| PNT | OFFSET/ | STATION/ | ALIGNMENT |
|---------|---------|-----------|----------------------|
| DE30085 | 34.47 R | 102+44.69 | SR 21 BU/S Laurel St |
| DE30092 | 34.47 R | 102+77.68 | SR 21 BU/S Laurel St |
| DE30 | | | |