

RAIL CROSSING CLOSING

EFFINGHAM COUNTY

PROJECT NO.

21-1027

FIGURE: 01

8/25/21

PREPARED FOR:

EFFINGHAM COUNTY

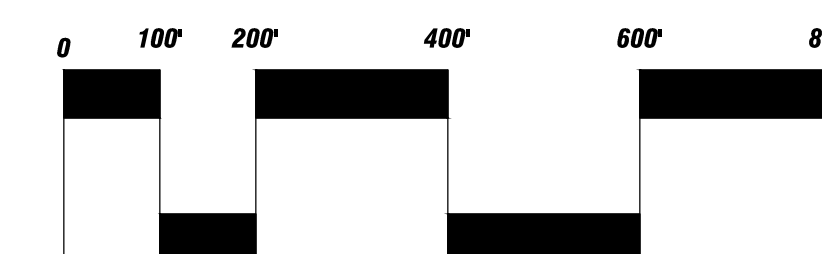
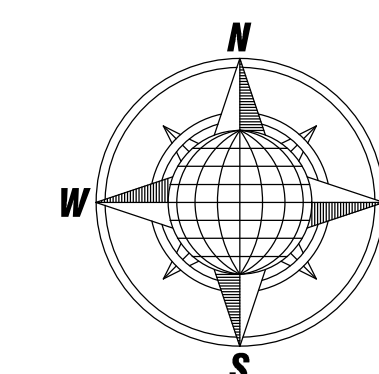
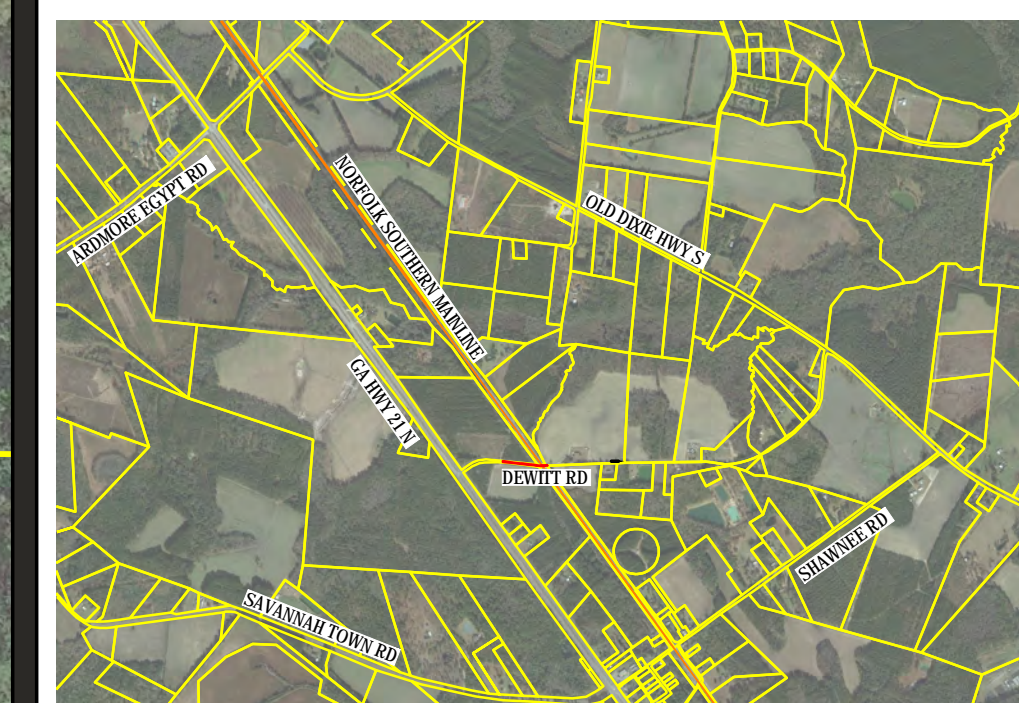
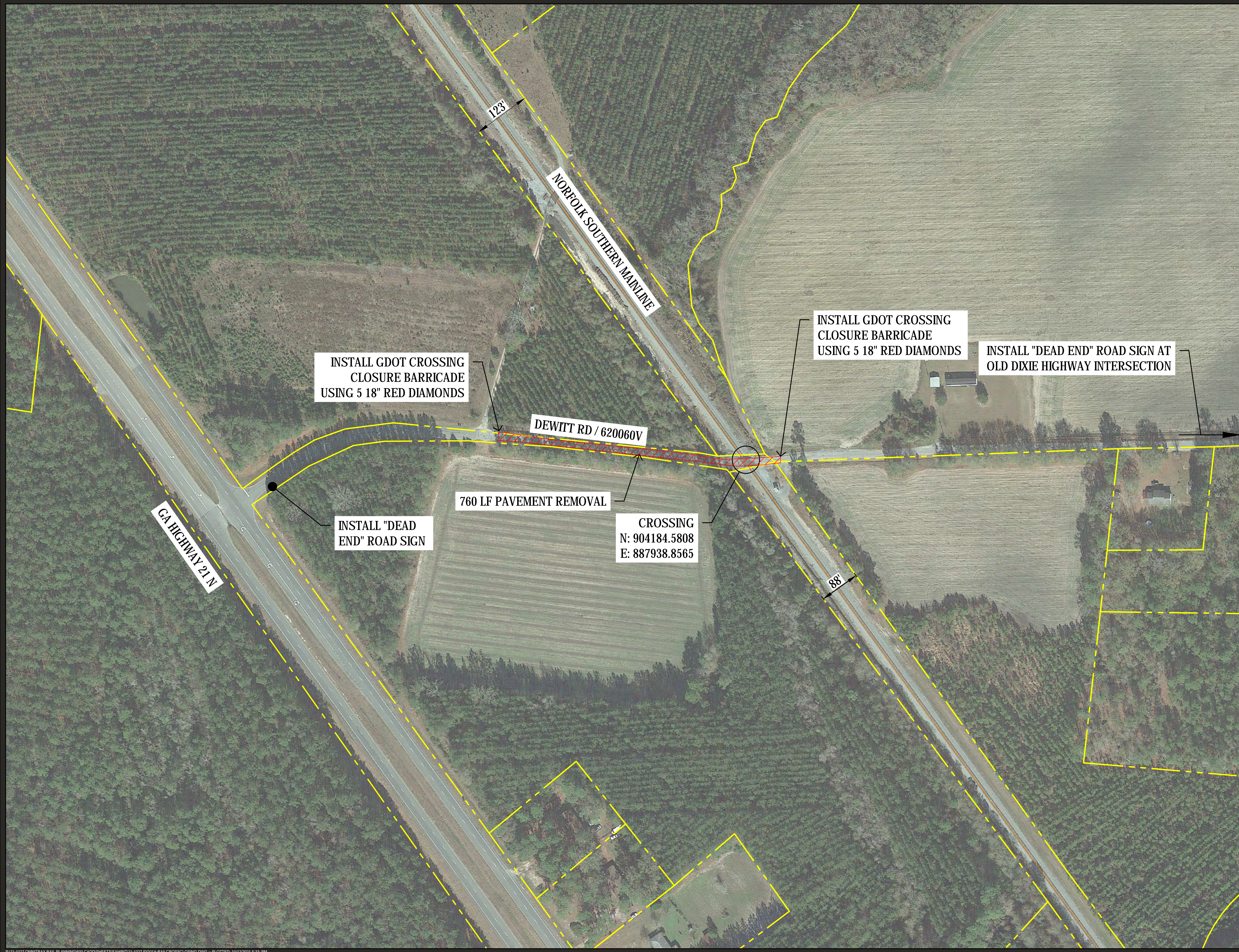
PREPARED BY:

HUSSEY GAY BELL
Established 1958

329 COMMERCIAL DRIVE, SAVANNAH, GA 31406 / T:912.354.4626
SAVANNAH • ATLANTA • STATESBORO • CHARLESTON • COLUMBIA • NASHVILLE
www.husseygaybell.com



Ball Maritime Group, LLC
4 Cedar View Court | Savannah, Georgia | 31410 | (912) 662-2914
www.ballmaritime.com Copyright © 2021



SCALE:
1" = 200'

DISCLAIMER

Drawing is based on a 34" x 22" Sheet

This map illustrates a general plan of the development which is for discussion purposes only. Does not limit or bind the owner and is subject to change and position locations are for illustrative purposes only and are subject to an accurate survey and property description. The information contained in this map is subject to change with out notice and is for illustrative purposes only and as such the producer assumes no legal responsibility.