



PO Box 492467
 Atlanta, GA 30349
 (770) 719-9005

Date: 5/20/2022
 Quote #: McCall-864-2
 Rep: Todd Wambold
 Direct: (678) 350-8971

QUOTATION

	Bill to:	Ship to:
Name	Effingham County Board of Commissioners	McCall Park
Address	601 North Laurel Street	5500 McCall Rd
City, State Zip	Springfield Ga, 31329	Rincon Ga, 31326
Contact & Phone	Seth Zeigler 912-666-0550	Seth Zeigler 912-666-0550
Email	szeigler@effinghamcounty.org	County: Effingham

Qty	Model Number	Description	Unit Price	TOTAL AMOUNT
1	132-153864-2	Nucleus Play Structure NU-3091 All Other Equipment: Swings, Benches, Shade, Spinetic, Orb Rocker, Kid Force Spinner, Market Station		\$ 87,352.00
				38,475.00
1	EPDM	3900 Sq Ft Poured in Place Rubber Surfacing 8' Fall Height * This Adheres To ASTM Standards and to Manufacturers Recommendations*		61,867.00
Regular Price:				\$ 187,694.00
Less 2022 Spring Into Play Discount:				\$ (28,759.00)

NOTES:

This quote is valid till June 20th 2022. Please allow 13-15 weeks for Completion from Purchase Date. A 50% deposit is due with order or a PO# may be used in Lieu of Deposit. The final balance is due in our office within 15 days after completion. Although every effort will be made to minimize disruption, no provision is made herein to repair or replaced accidentally damaged landscaping.

- COLORS:**
- Upright Posts _____
 - Steel Accessories _____
 - Plastic Slides _____
 - Plastic Panels _____
 - 2-Color Plastics _____
 - Decks & Steps _____
 - Roofs _____

SubTotal	\$	158,935.00
Freight	\$	6,965.00
Sales Tax Rate	0.00%	
Installation Svcs.	\$	34,100.00
GRAND TOTAL	\$	200,000.00

Authorized signature & date:

A deposit payment of 50% deposit of the Grand Total amount is required before an order can be placed. Your signature, date and color selections must be completed above for order acceptance. Full payment is due within 15 days after completion. Standard rock clause will apply to installation services.

Thank you for considering PlaySouth Playground Creators!!

Rubber Designs Five Year EPDM Pour-In-Place Warranty

SUBJECT TO THE FOLLOWING TERMS AND CONDITIONS, RUBBER DESIGNS (MANUFACTURER) WARRANTS TO THE BUYER THAT THE RESILIENT RUBBER FROM RUBBER DESIGNS EPDM POUR-IN-PLACE SOLD TO THE BUYER WILL BE FREE FROM MANUFACTURING DEFECTS AT THE TIME OF COMPLETION OF ITS POURED-IN-PLACE JOB INSTALLATION APPLICATION ONTO PRE-REQUISITE SITE PREPARATION STANDARDS ESTABLISHED IN WRITING PRIOR TO SALE.

IF UPON INSPECTION BY THE PURCHASER UPON RECEIPT, THE RUBBER DESIGNS EPDM POUR-IN-PLACE EVIDENCES MANUFACTURING DEFECTS, MANUFACTURER'S LIABILITY AND BUYER'S REMEDIES ARE LIMITED, AT MANUFACTURER'S OPTION, TO THE REPAIR RECAP, OR REPLACEMENT OF THE DEFECTIVE RUBBER DESIGNS EPDM POUR-IN-PLACE STARTING FROM THE DATE INVOICED BY MANUFACTURER.

MANUFACTURER FURTHERMORE WARRANTS THAT THE RUBBER DESIGNS EPDM POUR-IN-PLACE WILL NOT PREMATURELY DETERIORATE TO THE POINT OF BONDED FAILURE BECAUSE OF FOOT TRAFFIC FOR A PERIOD OF FIVE (5) YEARS FROM THE DATE INVOICED BY MANUFACTURER, IF PROPERLY INSTALLED, CLEANED, MAINTAINED, AND USED FOR THE PURPOSE FOR WHICH THE MANUFACTURER INTENDED.

BUYER SHALL GIVE MANUFACTURER NOTICE OF CLAIM UNDER THIS WARRANTY WITHIN THIRTY (30) DAYS OF DISCOVERING PREMATURE DETERIORATION OF THIS PRODUCT. IF UPON INSPECTION BY THE MANUFACTURER, THE PRODUCT SHOWS PREMATURE DETERIORATION BECAUSE OF FOOT TRAFFIC WITHIN THE FIVE (5) YEAR PERIOD STATED HEREIN, THE MANUFACTURER'S LIABILITY AND THE BUYER'S REMEDIES ARE LIMITED AT THE MANUFACTURER'S OPTION TO THE PROVIDING OF REPAIR MATERIALS FOR THE PRODUCT, RECAPPING OF THE PRODUCT TOP COATING, OR REPLACEMENT OF THE AFFECTED SECTIONS.

THE WARRANTY WILL BE FOR 100% OF THE PRICE OF THE JOB FOR ONE (1) YEAR AFTER SUBSTANTIAL COMPLETION. THEREAFTER, THE WARRANTY COVERS 80% OF THE PRICE OF THE JOB FROM THE FIRST ANNIVERSARY OF SUBSTANTIAL COMPLETION UNTIL THE SECOND ANNIVERSARY OF SUBSTANTIAL COMPLETION. THEREAFTER, THE WARRANTY COVERS 60% OF THE PRICE OF THE JOB FROM THE SECOND ANNIVERSARY OF SUBSTANTIAL COMPLETION UNTIL THE THIRD ANNIVERSARY OF SUBSTANTIAL COMPLETION. THEREAFTER, THE WARRANTY COVERS 40% OF THE PRICE OF THE JOB FROM THE THIRD ANNIVERSARY OF SUBSTANTIAL COMPLETION UNTIL THE FOURTH ANNIVERSARY OF SUBSTANTIAL COMPLETION. THEREAFTER, THE WARRANTY COVERS 20% OF THE PRICE OF THE JOB FROM THE FOURTH ANNIVERSARY OF SUBSTANTIAL COMPLETION UNTIL THE FIFTH ANNIVERSARY OF SUBSTANTIAL COMPLETION.

THIS WARRANTY EXCLUDES ACTS OF GOD, DAMAGES FROM IMPROPER MAINTENANCE, DAMAGE CAUSED DURING FREIGHT DELIVERY, NORMAL WEAR AND TEAR, PRODUCT VANDALISM BY WAY OF MARKING, SCARRING, PUNCTURING EXPERIENCED FROM ITEMS SUCH AS PENS, PENCILS, KNIVES, HIGH HEELS, OR ANY SUCH OBJECT OF LIKENESS, OR MACHINERY NOT INTENDED FOR TRAFFICKING ON THIS SURFACE, OR THE USE OF MAINTENANCE EQUIPMENT WHEREIN THE SURFACING SUPPORTS THE WEIGHT OF THE EQUIPMENT, DAMAGED DIRECTLY OR INDIRECTLY,

Rubber Designs

Better for the earth. Better for you.

INCLUDING BUT NOT LIMITED TO ON ACCOUNT OF ACCIDENT, VANDALISM, ANIMALS, FIRE, FLOOD, CHEMICAL REACTION, STATIC OR DYNAMIC LOADS OF EXCEEDING THE RUBBER DESIGNS SPECIFICATIONS AT THE TIME OF INSTALLATION, IMPROPER SUBSURFACE PREPARATION, FAILURE OF THE SUBSURFACE AFTER INSTALLATION, AND THE USE OF CLEANING FLUIDS, OR IMPROPER CLEANING METHODS (REFER TO CLEANING MAINTENANCE INSTRUCTIONS FOR DETAILS OF PROPER CLEANING METHODS), AND NATURAL WEAKENING OF PIGMENTS DUE TO PROLONGED SUNLIGHT PENETRATION AND ULTRAVIOLET RAY EXPOSURE FROM DIRECT OR GLASS-FILTERED SUNLIGHT.

THIS WARRANTY ONLY APPLIES TO NEW PRODUCTS PURCHASED, AND IS LIMITED TO THE REPAIR OR REPLACEMENT OF RUBBER DESIGNS PRODUCTS. THIS WARRANTY DOES NOT COVER THE SHIPPING COSTS FOR RETURN, INCONVENIENCE OR CONSEQUENTIAL DAMAGES. NO REPRESENTATIVE OF THE MANUFACTURER HAS AUTHORITY TO MAKE ANY REPRESENTATIONS OR PROMISES EXCEPT STATED HEREIN. RUBBER DESIGNS EPDM POUR-IN-PLACE IS WARRANTED AS A BONDABLE SURFACE, FREE FROM REVELING, BUBBLING, OR LOSS OF INTEGRITY ADHERENCE. REMOVAL OF, OR ALTERATIONS TO PRODUCT SURFACE BY ANYONE OTHER THAN AN AUTHORIZED RUBBER DESIGNS APPLICATOR SHALL TERMINATE CUSTOMER WARRANTY. RUBBER DESIGNS IS NOT RESPONSIBLE FOR ANY DEFECTS OR EDGE SEPARATION DUE TO THE USAGE OF A BUTT CONNECTION. RUBBER DESIGNS IS NOT RESPONSIBLE FOR DAMAGES TO PRODUCT SURFACE DURING THE FORTY-EIGHT (48) HOUR CURING PERIOD NECESSARY FOR PROPER INSTALLATION. RUBBER DESIGNS IS NOT RESPONSIBLE FOR SITE SECURITY DURING AND AFTER THE PRODUCT INSTALLATION. CUSTOMER MUST RECEIVE A COPY OF PRODUCT WARRANTY FROM AN AUTHORIZED RUBBER DESIGNS DEALER. WHEREBY SUBMITTING A SIGNED COPY OF THE WARRANTY ALONG WITH THE PURCHASE ORDERS TO THE DEALER DISTRIBUTOR, A SIGNED COPY OF THE WARRANTY MUST BE MAINTAINED BY THE CUSTOMER OR DEALER DISTRIBUTOR FOR THE WARRANTY TO BE HONORED.

THE PRODUCT WARRANTY IS COMPLETELY REPRESENTED HERE IN WRITING, AS ALL PROMISES ARE DECLARED WITHIN THIS DOCUMENT. THE MANUFACTURER SHALL NOT BE LIABLE FOR ANY INCIDENTAL, OR CONSEQUENTIAL DAMAGES TO THE PRODUCT, OR ANY TO THE SURROUNDING PREMISES ARISING UNDER ANY THEORY OF LAW WHATSOEVER.

Customer/Project Name: _____

Site Address: _____

Authorized Signature: _____

Title: _____ Date: _____

Project Sales Order: _____ Invoice #: _____ Date of Invoice: _____

Change
Order Sales Order: _____ Invoice #: _____ Date of Invoice: _____

Date Installation Completed: _____

BURKE GENERATIONS WARRANTY®

The Longest and Strongest warranty in the industry

BCI Burke Company, LLC ("Burke") warrants that all standard products are warranted to be free from defects in materials and workmanship, under normal use and service, for a period of one (1) year from the date of shipment.

We stand behind our products.

In addition, the following products are warranted, under normal use and service from the date of shipment as follows:

- One Hundred (100) Year Limited Warranty on aluminum and steel upright posts (including Intensity®, Synergy™, Nucleus®, Voltage®, Little Buddies®, ELEVATE®, ACTIVATE®, INVIGORATE™) against structural failure due to corrosion, deterioration or workmanship.
- One Hundred (100) Year Limited Warranty on KoreConnect® clamps against structural failure due to corrosion, deterioration or workmanship.
- One Hundred (100) Year Limited Warranty on Hardware (nuts, bolts, washers)
- One Hundred (100) Year Limited Warranty on bolt-through fastening and clamp systems (Synergy™, Intensity®, Nucleus®, Voltage®, Little Buddies®, ELEVATE®).
- Twenty-Five (25) Year Limited Warranty on spring assemblies and aluminum cast animals.
- Fifteen (15) Year Limited Warranty on structure platforms and decks, metal roofs, table tops, bench tops, railings and barriers against structural failure due to materials or workmanship.
- Fifteen (15) Year Limited Warranty on all plastic components including StoneBorders against structural failure due to materials or workmanship.
- Ten (10) Year Limited Warranty on ShadePlay Canopies fabric, threads, and cables against degradation, cracking or material breakdown resulting from ultra-violet exposure, natural deterioration or manufacturing defects. This warranty is limited to the design loads as stated in the specifications.
- Ten (10) Year Limited Warranty on NaturePlay® Boulders and GFRG products against structural failure due to natural deterioration or workmanship. Natural wear, which may occur with any concrete product with age, is excluded from this warranty.
- Ten (10) Year Limited Warranty on Full Color Custom Signage against manufacturing defects that cause delamination or degradation of the sign. Full Color Custom Signs also carry a two (2) year warranty against premature fading of the print and graphics on the signs.
- Five (5) Year Limited Warranty on Intensity® and RopeVenture® cables and LEVELX® flex bridge against premature wear due to natural deterioration or manufacturing defects. Determination of premature wear will be at the manufacturer's discretion.
- Five (5) Year Limited Warranty on moving parts, including swing components, against structural failure due to materials or workmanship.
- Five (5) Year Limited Warranty on PlayEnsemble® cables and mallets against defects in materials and workmanship.
- Three (3) Year Limited Warranty on electronic panel speakers, sound chips and circuit boards against electronic failure caused by manufacturing defects.

The warranty stated above is valid only if the equipment is erected in conformity with the layout plan and/or installation instructions furnished by BCI Burke Company, LLC using approved parts have been maintained and inspected in accordance with BCI Burke Company, LLC instructions. Burke's liability and your exclusive remedy hereunder will be limited to repair or replacement of those parts found in Burke's reasonable judgment to be defective. Any claim made within the above stated warranty periods must be made promptly after discovery of the defect. A part is covered only for the original warranty period of the applicable part. Replacement parts carry the applicable warranty from the date of shipment of the replacement from Burke. After the expiration of the warranty period, you must pay for all parts, transportation and service charges.

Burke reserves the right to accept or reject any claim in whole or in part. Burke will not accept the return of any product without its prior written approval. Burke will assume transportation charges for shipment of the returned product if it is returned in strict compliance with Burke's written instructions.

THE FOREGOING WARRANTIES ARE EXCLUSIVE AND IN LIEU OF ANY OTHER WARRANTY, EXPRESS OR IMPLIED, INCLUDING BUT NOT LIMITED TO ANY IMPLIED WARRANTY OR MERCHANTABILITY OR FITNESS FOR A PARTICULAR PURPOSE. IF THE FOREGOING DISCLAIMER OF ADDITIONAL WARRANTIES IS NOT GIVEN FULL FORCE AND EFFECT, ANY RESULTING ADDITIONAL WARRANTY SHALL BE LIMITED IN DURATION TO THE EXPRESS WARRANTIES AND BE OTHERWISE SUBJECT TO AND LIMITED BY THE TERMS OF BURKE'S PRODUCT WARRANTY. SOME STATES DO NOT ALLOW THE EXCLUSION OF CERTAIN IMPLIED WARRANTIES, SO THE ABOVE LIMITATION MAY NOT APPLY TO YOU.

Warranty Exclusions: The above stated warranties do not cover: "cosmetic" defects, such as scratches, dents, marring, or fading; damage due to incorrect installation, vandalism, misuse, accident, wear and tear from normal use, exposure to extreme weather; immersion in salt or chlorine water, unauthorized repair or modification, abnormal use, lack of maintenance, or other cause not within Burke's control; and

Limitation of Remedies: Burke is not liable for consequential or incidental damages, including but not limited to labor costs or lost profits resulting from the use of or inability to use the products or from the products being incorporated in or becoming a component of any other product. If, after a reasonable number of repeated efforts, Burke is unable to repair or replace a defective or nonconforming product, Burke shall have the option to accept return of the product, or part thereof, if such does not substantially impair its value, and return the purchase price as the buyer's entire and exclusive remedy. Without limiting the generality of the foregoing, Burke will not be responsible for labor costs involved in the removal of products or the installation of replacement products. Some states do not allow the exclusion of incidental damages, so the above exclusion may not apply to you.

The environment near a saltwater coast can be extremely corrosive. Some corrosion and/or deterioration is considered "normal wear" in this environment. Product installed within 500 yards of a saltwater shoreline will only be covered for half the period of the standard product warranty, up to a maximum of five years, for defects caused by corrosion. Products installed in direct contact with saltwater or that are subjected to salt spray are not covered by the standard warranty for any defects caused by corrosion.

Contact your local Burke Representative for warranty information regarding Burke Turf® and Burke Tile products.

Terms of Sale

Pricing: Prices published in this catalog are in USD, are approximate and do not include shipping & handling, surfacing, installation nor applicable taxes. All prices are subject to change without notice. Contact your Burke representative for current pricing. Payments are to be made in USD.

Weights: Weights are approximate and may vary with actual orders.

Installation: All equipment is shipped unassembled. For a list of factory-certified installers in your area, please contact your Burke representative.

Specifications: Product specifications in this catalog were correct at the time of publication. However, product improvements are ongoing at Burke, and we reserve the right to change or discontinue specifications without notice.

Loss or Damage in Transit: A signed bill of lading is our receipt from a carrier that our shipment to you was complete and in good condition upon arrival. Before you sign, please check the Bill of lading carefully when the shipment arrives to make sure nothing is missing and there are no damages. Once the shipment leaves our plant, we are no longer responsible for any damage, loss or shortage.

For more information regarding the warranty, call Customer Service at 920-921-9220 or 1-800-356-2070.

01/2020

BCIBURKE.COM

Burke

800.266.1250

SUPPLEMENTAL PLAYGROUND WARRANTY

For Burke playgrounds installed by PlaySouth Playground Creators

Customer Name _____

Project Name _____

In addition to BCI Burke's non-prorated Generations Warranty, PlaySouth Playground Creators will at no additional cost to you, perform **free replacement** of any part failure covered under Burke's warranty! After our receipt of the replacement parts from Burke, these warranty repairs are performed by factory trained and industry certified personnel to assure you that your new playground will continue to provide fun, safe and durable play for years to come!

This zero-cost warranty provides you with the absolute lowest cost of ownership!

**See BCI Burke's Generations Warranty for complete details.*

for PlaySouth Playground Creators

Date

Play
South
PLAYGROUND CREATORS



Burke
PLAY THAT MOVES YOU™

**BCI Burke Company, LLC
Burke Equipment Volume Pricing**

OMNIA Partners Contract #R220201

Playground Systems, Installation, Service and Related Items

Burke will offer OMNIA Partners members the following volume based discounts on all Burke equipment. Volume discount does not pertain to Burke Turf, Burke Tiles or services such as installation.

List Price Range	Discount
\$1-\$49,999	7%
\$50,000-\$99,999	10%
\$100,000 and above	15%

Seth Zeigler

From: Todd Wambold <todd@playsouth.net>
Sent: Friday, May 20, 2022 4:14 PM
To: Seth Zeigler; Carl J. Palumbo
Subject: EXTERNAL:Your Option #1
Attachments: 132-153864-2_ProposalPro_TW_McCallPark.pdf; 132-153864-2A_TW_McCallPark.jpg; 132-153864-2B_TW_McCallPark.jpg; McCall-864-2Quote.pdf; Rubber Designs 5 Year EPDM PIP Warranty (1).pdf; Generations Warranty.pdf; PlaySouth Supplemental Warranty.pdf; Sourcewell Discount.pdf; Burke Volume Discounts (1).pdf

Seth,
Please see attached McCall-864-2 Quote pdf. I have attached the Sourcewell Discount pdf and the Burke Volume Discount (Omnia Partners) both are the contract purchasing breakdowns. Above \$100,000 on both is a 15% discount which I am exceeding in my pricing to provide all of this equipment to you. Also you will find our Generations Warranty and PlaySouth's Supplemental Warranty, which provide the LOWEST cost of ownership in the industry. If you need an explanation on how they work I would be glad to create another email or speak you guys in person. Included is the Rubber Designs EPDM warranty pdf.

The 3D's are also pictured (I randomly chose the colors and we can always go over your preferred colors when the project is approved, Our Color page is at the tail end of the ProposalPro pdf).

Call with any questions or concerns and I hope your meeting goes well on Monday!
Have a great weekend!

Todd Wambold, CPSI
PlaySouth Playground Creators
Sales/ Project Manager
Direct: 678-350-8971
www.playsouth.net



Proud to be awarded the 2021 Burke Playground of the Year
Check it out [Here](#)

**** This is an EXTERNAL email. Please do not click on a link or open ANY attachments unless you are confident it is from a trusted source and you are expecting this email. ****

PROPOSAL #: 132-153864-2

MCCALL PARK

Burke
PLAY THAT MOVES YOU
BURKEEL.COM • 800.866.1850



Play South
PLAYGROUND CREATORS

3D Designer: Gina Fischer

MCCALL PARK

Burke
PLAY THAT MOVES YOU!
BURKE.COM • 800.566.1850



Play South
PLAYGROUND CREATORS

**McCall Park
Effingham County Board of Commissioners**

May 07, 2022

Seth Zeigler
Effingham County Board of Commissioners
601 North Laurel Street
Springfield, GA 31329

Dear Seth Zeigler:

PlaySouth Playground Creators is delighted to provide Effingham County Board of Commissioners with this playground equipment proposal.

This design was developed with your specific needs in mind, and we look forward to discussing this project further with you to ensure your complete satisfaction. PlaySouth Playground Creators is confident that this proposal will satisfy Effingham County Board of Commissioners' functional, environmental, and safety requirements - and most importantly, bring joy and excitement to the children and families directly benefiting from your new playground.

You have our personal commitment to support this project and your organization in every manner possible. We look forward to continuing to develop a long-standing relationship with Effingham County Board of Commissioners. We appreciate your consideration and value this opportunity to earn your business.

Sincerely,

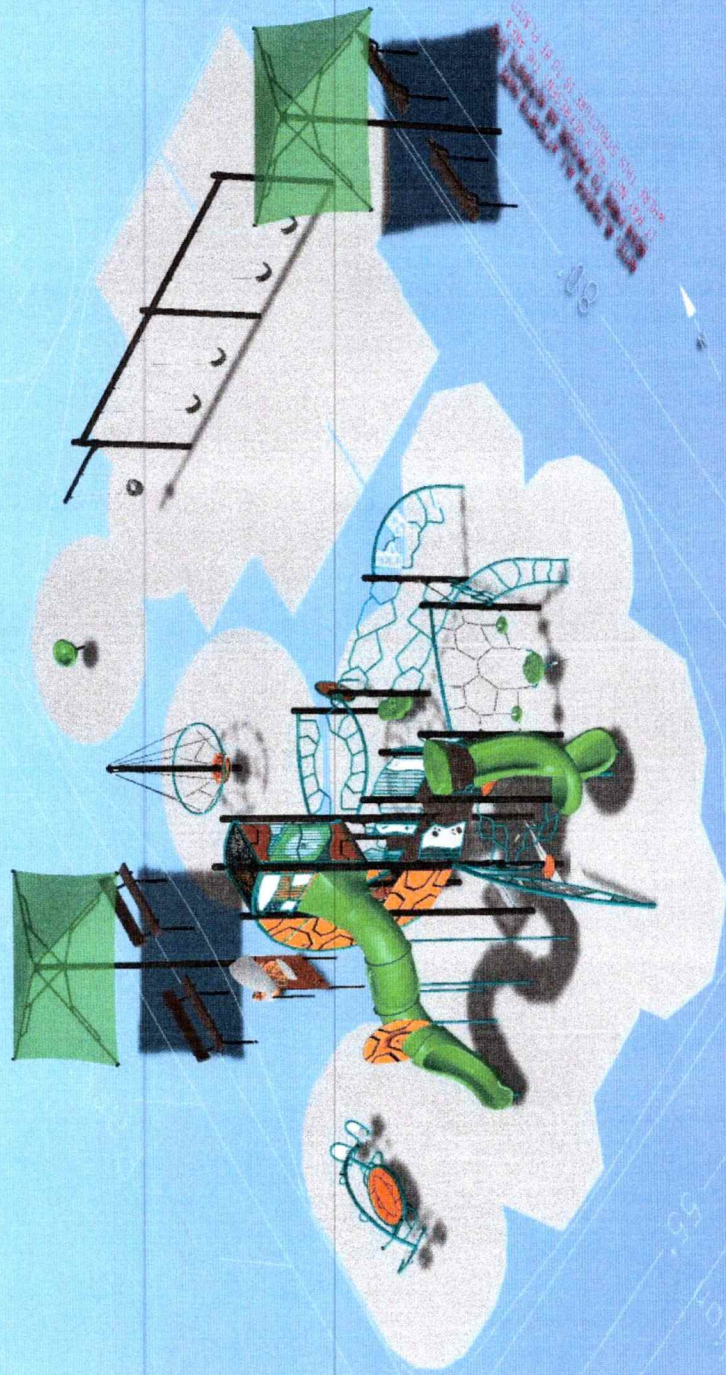
Todd Wambold
PlaySouth Playground Creators
PO Box 492467
Atlanta, GA 30349

Burke

Proposal # 132-153864-2

McCall Park

PlaySouth Playground Creators



Covered Pathway
55'

PLAY THAT MOVES YOU®

At Burke, movement is our mantra. It drives our purpose and ignites our passion to bring the best in playground design and the most innovative, developmentally rich play, outdoor fitness and recreation products. Our research and testing push us to create new and unique ways to challenge children, families, schools, communities, teams and individuals to move, to grow and to play. Play fosters opportunities for connection between generations and with our peers, provides growth and togetherness and moves us in so many ways. Join Our Movement® and experience the many ways play can move you.

PLAY FOR HEALTH

Movement is life and is one of the most important aspects in overall health and wellness for people of all ages and abilities. Burke has playground and fitness offerings that engage everyone in all stages of life to move. Our Nucleus® and Intensity® playgrounds feature a fusion of play that helps children engage in active play throughout the day for enhanced growth and developmental opportunities. ELEVATE® Fitness Course brings obstacle course fitness to a whole new level and is poised to engage children 5-12, teenagers and adults. ACTIVATE® Fitness Circuit and INVIGORATE® Dynamic Fitness are a great way to add events to a fitness trail or create a space for outdoor exercise. Our variety of fitness equipment will meet you where you are in your fitness journey and challenge you to be more.

PLAY FOR YOUR MIND

Playful experiences are learning experiences and children at play are developing a wide-variety of skills that range from problem solving and cognitive planning to memory and self-regulation. Each and every time a child plays they are contributing positively to their cognitive development and setting themselves up for future success.



PLAY FOR CONNECTION

Play provides us with common experiences, shared laughter and true connection. It brings communities together and helps us return to the simplicity of basic human connection and kindness. Parks and recreation spaces are critical because they lay the groundwork for the intergenerational engagement, interaction and development we all seek. Products such as Novo® Playful Furniture, with interesting pieces that can be used in a variety of ways, foster those opportunities by creating a space where everyone can interact and play together in their own way. The Konnection® Swing revolutionizes connection by promoting face-to-face connections and playing together. Every person of every age and ability brings their own unique experiences that enhance the collective and moves us all through play.

PLAY FOR MOTION

Motion play creates a childhood experience like no other by creating movement for children of all abilities and providing developmental benefits, including increased spatial awareness, inner ear stimulation and balance. Motion can be a source of calm for children with sensory processing differences while providing delight and excitement for children of all ages.

PLAY FOR DEVELOPMENT

Play is the work of childhood and helps children express themselves, monitor their emotions and develop a sense of identity that fuels their self-esteem and shapes their world view. Creating environments that foster this growth is at the heart of what we do at Burke and helps to teach resiliency and perseverance, all skills that transcend the playground and help children to develop into successful and healthy adults.

WORK THAT MOVES US

Our mission is simple – to bring Play That Moves You® to communities around the world. This mission drives us each and every day to innovate the best in play, playgrounds, recreation and outdoor fitness equipment that help everyone find the best of themselves through play. We are passionate about our legacy of customer service and craftsmanship while looking to the future and always striving to be better.

At Burke, play inspires us to create a community of people that are invested in growth, aren't afraid to commit to positive change and seek to enrich and enhance the lives of the people in communities where we serve and live. Researching, innovating and creating products that help communities and people grow and thrive is the core of our purpose. In our own community, we partner with organizations such as the YMCA and Boys and Girls Club of Fond du Lac and we support, on a larger scale, organizations, municipalities, schools, churches and associations to Join Our Movement® and help let play lead the way for change. This is work that moves us and we hope the results move you.

HANDCRAFTED IN AMERICA'S HEARTLAND

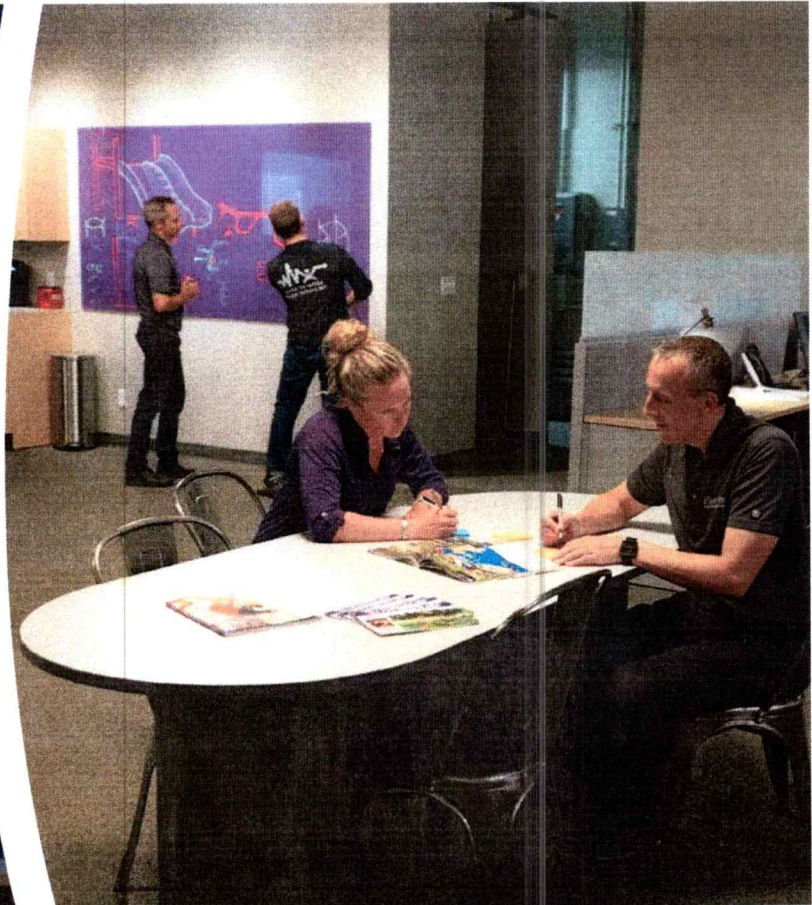
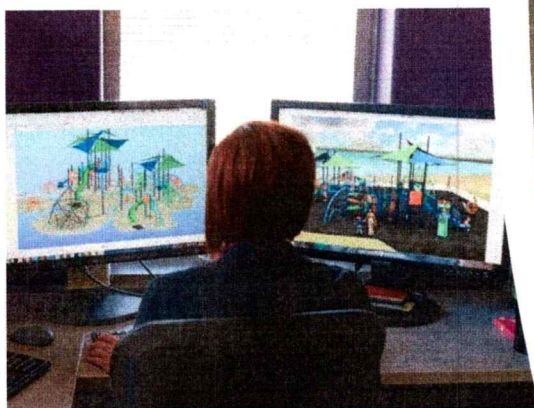
Walk through our Fond du Lac, WI manufacturing facility and you will see playgrounds coming to life through the hands of our people. In the age of assembly lines, we work to combine efficiency with a personal touch that makes every playground special. Bringing quality playgrounds to communities like yours is Work That Moves Us, and we hope the playgrounds we make move you too.

SUPERIOR SERVICE

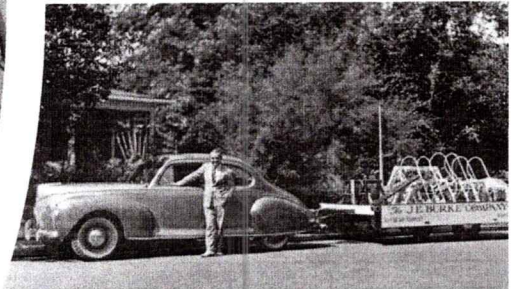
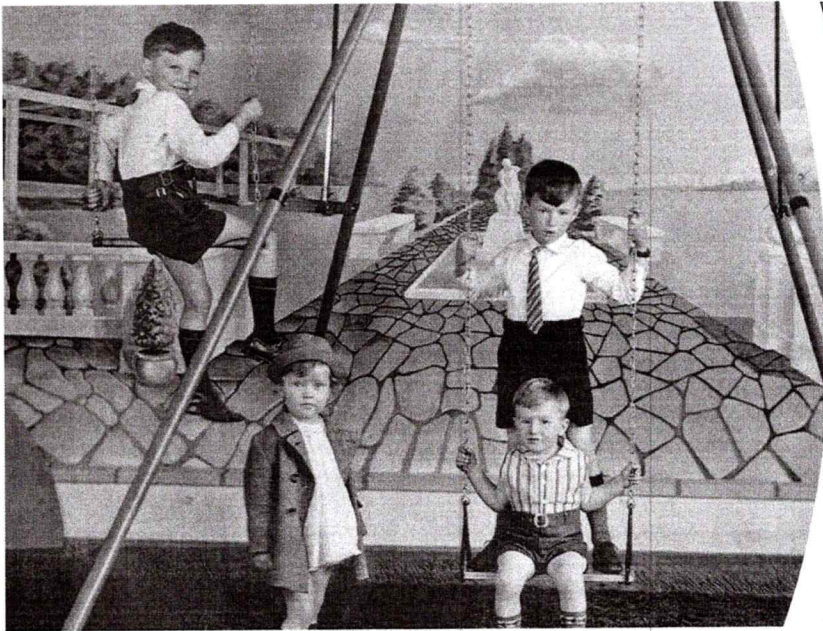
Customer Service is a hallmark of Burke and we take pride in the fact that when you call, we answer. We have factory-direct customer service representatives that are available to answer questions, help with replacement parts or field inquiries about installations.

YOUR BURKE REPRESENTATIVE

We as Burke Representatives are passionate about bringing play to your community and helping you design your perfect play environment! We are knowledgeable and experienced about the entire playground process from site evaluation to design to maintenance and will work with you beyond installation to make sure your playground is, and remains, all you dreamed!

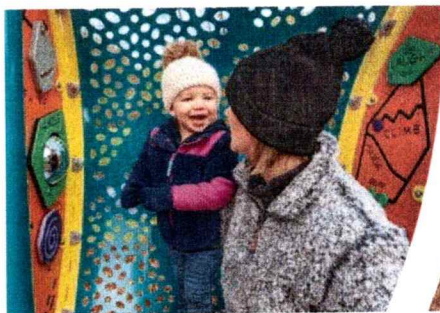


BURKE'S HISTORY



MORE THAN A CENTURY OF PLAY

Guided by our legacy of innovation, customer service and creativity, we are making the very best and most innovative playground, outdoor fitness and recreation products in our history! Our founder J.E. Burke set the course more than a century ago and we're taking his vision and making it even bigger! Through research, analysis and continuous improvement, we're designing products and playspaces that bring Play That Moves You® to communities for more fun, movement, engagement and development! Play is our passion, our mission and our business and we can't wait for you to Join Our Movement.



BCIBURKE.COM

Burke

800.266.1250

BURKE BUILT QUALITY

Discover the value of investing in a Burke Playground:

KOREKONNECT® DIRECT-BOLT CLAMP SYSTEM:

Nucleus® features our Industry-leading KoreKonnnect direct-bolt clamp system resulting in the strongest and most accurate connection system ever. Factory located connection points make for easy, precise installation and an error-free fit. Best of all, KoreKonnnect is covered for 100 years under our non-prorated Generations Warranty®.

DIRECT-BOLT CONNECTION SYSTEM:

Intensity®, ELEVATE® Fitness Course, ACTIVATE® Fitness Circuit and Synergy® feature Burke's trusted direct-bolt connection that uses a durable, straightforward direct-bolt system to ensure a trouble-free installation and provide the necessary strength to accommodate the demands of playing children. Like our KoreKonnnect system, Direct-Bolt connections are covered for 100 years under our Generations Warranty.

EZKONNECT® DECK MOUNTING SYSTEM:

Our exclusive self-leveling deck attachment and factory CNC construction allows for faster and more precise location of decks during installation. The 2-bolt per corner deck attachment increases overall structure strength and stability.

PLATFORMS:

Burke's oversized non-slip platforms are constructed of heavy-duty punched steel that can support more than 2 tons. Our vinyl coating is California compliant, free of lead and other hazardous heavy metals.

TAMPER-RESISTANT STAINLESS STEEL HARDWARE:

All hardware is covered for 100 years under our Generations Warranty.

PREMIUM POWDER COATINGS:

Our industry-leading powder coatings and finishes prevent fading, last longer and deter rust. We also offer a "coastal package" powder coat system. This special powder coat system for metal components and upright posts will provide additional corrosion and chemical protection along with added longevity to the color and gloss retention of the powder coated parts. Contact your Burke Representative for more information on colors, price and warranty.

COMPOUND PLASTICS WITH UV-20:

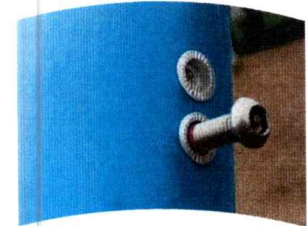
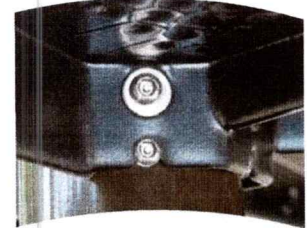
You'll get long wear and bright, vibrant colors that hold up for years thanks to our thick, durable rotomolded plastics with UV-20 protection. This is why we can cover them for 15 years under our non-prorated Generations Warranty.

CLIMBING CABLES:

Our climbing cables are flexible enough to provide movement, yet strong enough to last. Our ropes are made from 6 polyester cords with steel reinforcement wrapped around a synthetic fiber core. Each cord contains 8 galvanized steel strands tightly covered with polyester multi-fibers. Our RopeVenture® cables consist of 6 strands, each containing 24 stainless steel reinforcing strands within a nylon sleeve, wrapped around a solid nylon core.

ALUMINUM CONNECTORS:

Swivel connectors at the end of our ropes allow assembly at any angle with no unwanted twists in the net. The aluminum fittings used to secure the joints are swaged in place to prevent any movement between the rope and fittings that could cause wear.



FREE RESOURCES

NPPS SAFETY KIT

Burke truly gives you the most value for your money. As part of our Total Cost of Ownership Package, we offer value-added resources FREE with every playground structure purchase. The National Program for Playground Safety (NPPS) Playground Supervision Safety Kit helps supervisors and educators be prepared on the playground. Learn more at bciburke.com/safety.

CUSTOM MAINTENANCE KIT

To help maintain a safe, functioning playground we include a custom maintenance schedule, touch-up paint, graffiti remover and carrying case FREE with every playground structure purchase.

PLANNING & FUNDING TOOLS

We provide you with FREE tools to plan your playground from fundraising and design to installing a community build playground. At Burke, we understand the dedication and hard work it takes to raise the funds for playground equipment. That's why we created Funds for Fun, a direct donation fundraising program to help your organization raise the funds it needs for your new playground. We've also partnered with The School Funding Center to provide up-to-date grant information along with expert grant writing services. Learn more at bciburke.com/funding.



**FREE WITH EVERY BURKE
PLAY STRUCTURE PURCHASE**



FREE FUNDRAISING TOOLS!

BCIBURKE.COM

Burke

800.266.1250

BIBA® PLAYGROUND GAMES

ADD MORE PLAY, MOVEMENT AND FUN

Biba brings more engagement, more fun and more people to play. It's another way to view and expand Play That Moves You. Biba on a playground brings games to kids, families and communities that meet them where they are and challenges them to spend more time outdoors moving, playing and developing skills that transcend the playground. At its core, Biba features a variety of games including popular and recognizable characters that will engage and expand the play value of Burke playgrounds like never before. Biba brings imagination, movement and fun that can't be found anywhere else! All you need is the Biba App, a Burke playground featuring Biba and the readiness for a whole new kind of playground experience.

PLAY TOGETHER

Engaging kids and families and creating an experience that fosters social, emotional, physical and cognitive development is part of what Biba on a Burke playground offers. When everyone is engaged, more time is spent at the playground getting that much-needed movement, building relationships and having fun outside.

PLAY GAMES

Getting all the latest in playground games from the leader in outdoor mobile gaming is easy – just download the FREE App and find the nearest Biba playground and start having fun!

PLAYGROUND ENHANCEMENT

Breathing new life into your existing playspace comes from finding fresh, innovative and fun ways to use the space. Enter Biba. Taking an existing playground and adding Biba expands the play value of your existing environment and enhances the playground experience so that every adventure is new again.

STATS IN PLAY

Yes, stats in play...you read that right! With Biba on your playground, you can have statistics at your fingertips. These statistics help parents follow along with their children's progress, while helping park managers understand their park usage, comparing playground facility usage and helping provide quantitative data to support future budget requests. Stats and play unite with Biba!

CALL YOUR LOCAL REPRESENTATIVE AT 800.266.1250 OR VISIT BCIBURKE.COM/BIBA TO LEARN MORE.



Trademarks for Biba are the property of Biba Ventures Inc. © Copyright 2021 Biba Ventures Inc.



BCIBURKE.COM

Burke

800.266.1250

COOPERATIVE PURCHASING OPTIONS

PLAYGROUNDS WITHOUT ALL THE PAPERWORK

Purchasing with contracts may sound intimidating, but getting your community playspace doesn't need to be a painful process of writing specifications, issuing RFP's and jumping through hoops – it can be simplified – we promise! As you continue planning for your new commercial playground, review the Purchasing Contracts offered through our partners. Purchasing with one of these contracts simplifies the process and ensures the design and intent remain the same – serving as a place for your community to gather, grow and thrive.

EQUALIS GROUP

Equalis is an innovative cooperative purchasing organization that believes in the power of partnership and that when you work together you achieve more. The basic premise of the Equalis cooperative purchasing organization is to leverage the combined buying power of all members for better pricing and favorable contract terms. Equalis Group uses the lead agency model for competitively bid contracts, provides our participants the savings they expect and offers efficiencies and peace of mind within the procurement process. It is our mission to continuously improve the measurable and meaningful impact of cooperative services for everyone throughout the supply chain.

OMNIA PARTNERS

OMNIA Partners, Public Sector (Subsidiary National IPA) is the largest and most experienced organization in purchasing and supply chain management. Comprised of participants and suppliers in the public sector, we bring together industry-leading buying power and world-class suppliers to offer an extensive portfolio of competitively solicited and publicly awarded contracts and partnerships. OMNIA Partners is proud to offer more value and resources to state and local government, higher education, K-12 education and non-profits.

HGACBUY

Purchasing Burke playground equipment through HGACBuy gives your agency access to volume purchasing agreements and discounts, and there's no need to incur the time and expense of writing specs, issuing RFPs, advertising and evaluating bids. This can shorten your procurement cycle by months, while ensuring compliance with competitive bidding requirements.

SOURCEWELL

As a leader in cooperative purchasing, Sourcewell is passionate about helping members fulfill their public service missions. Sourcewell builds strong relationships with members and vendors to develop practical solutions together.

The easiest way to Join Our Movement is to call your local Representative at 800.266.1250 or visit bciburke.com/rep. Our passion is bringing play to communities like yours and we can't wait to help you get started!

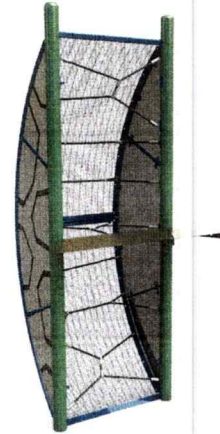


FEATURED PLAY EVENTS



COBRA SLIDE® CURVED

Excitement can't be contained when it comes to COBRA SLIDES! They are twisting, turning, in and out of light and SO MUCH FUN! Fun aside, sliding has a variety of developmental benefits ranging from core strength and balance to taking turns and imagination.



Nucleus® Evolution® Arch Climber

Climbing up ropes to view the world from a different angle. Inspiring new panoramas, creating new vistas. You're protected but it looks open and new. A perspective like nothing you've ever experienced before.



Straight Horizontal Ladder

Overhead Ladders offer so many opportunities for play and development within a playspace. These new overheads embody Burke's energetic design language, are loads of fun and promote upper body strength and teach resilience!



Serenity Spot

Learn. Socialize. Sit. Relax. Play. Engage. All this and more are the purpose behind the creation of the Serenity Spot. Within a playspace sometimes a child, caregiver or parent needs a comfortable place to step away and still be part of the playspace.

FEATURED PLAY EVENTS



Pinball/Piston Ring Panel

Interactive and fun, our new Pinball/Piston Panel enhances cognitive development and fine motor skills while adding visual interest to your playspace, outdoor classroom or anywhere you need more play.



EVOLUTION SQUARE ROOF

Burke's roofs offer protection from the damaging effects of the sun while still allowing children to have fun.



ORB™ ROCKER

With four traditional seats and room for four more in the center, the Orb Rocker's unique design and exciting rocking motion invites everyone into the fun. Caregivers and children will love the ease of access with side openings for users of all sizes.



SPINETIC™

Spinetic is a multi-user spinner that offers children the opportunity to play together and work toward a common goal - an exciting spinning adventure on the playground!

DESIGN SUMMARY

PlaySouth Playground Creators is very pleased to present this proposal for consideration for the McCall Park located in Rincon. BCI Burke Company, LLC has been providing recreational playground equipment for over 90 years and has developed the right mix of world-class capabilities to meet the initial and continuing needs of Effingham County Board of Commissioners. We believe our proposal will meet or exceed your project's requirements and will deliver the greatest value to you.

The following is a summary of some of the key elements of our proposal:

- Project Name: McCall Park
- Project Number: 132-153864-2
- User Capacity: 153
- Age Groups: Ages 5-12 years
- Dimensions: 53' 9" x 78' 1"
- Designer Name: Landon Berendsen

PlaySouth Playground Creators has developed a custom playground configuration based on the requirements as they have been presented for the McCall Park playground project. Our custom design will provide a safe and affordable playground environment that is aesthetically pleasing, full of fun for all users and uniquely satisfies your specific requirements. In addition, proposal # 132-153864-2 has been designed with a focus on safety, and is fully compliant with ASTM F1487 and CPSC playground safety standards.

We invite you to review this proposal for the McCall Park playground project and to contact us with any questions that you may have.

Thank you in advance for giving us the opportunity to make this project a success.

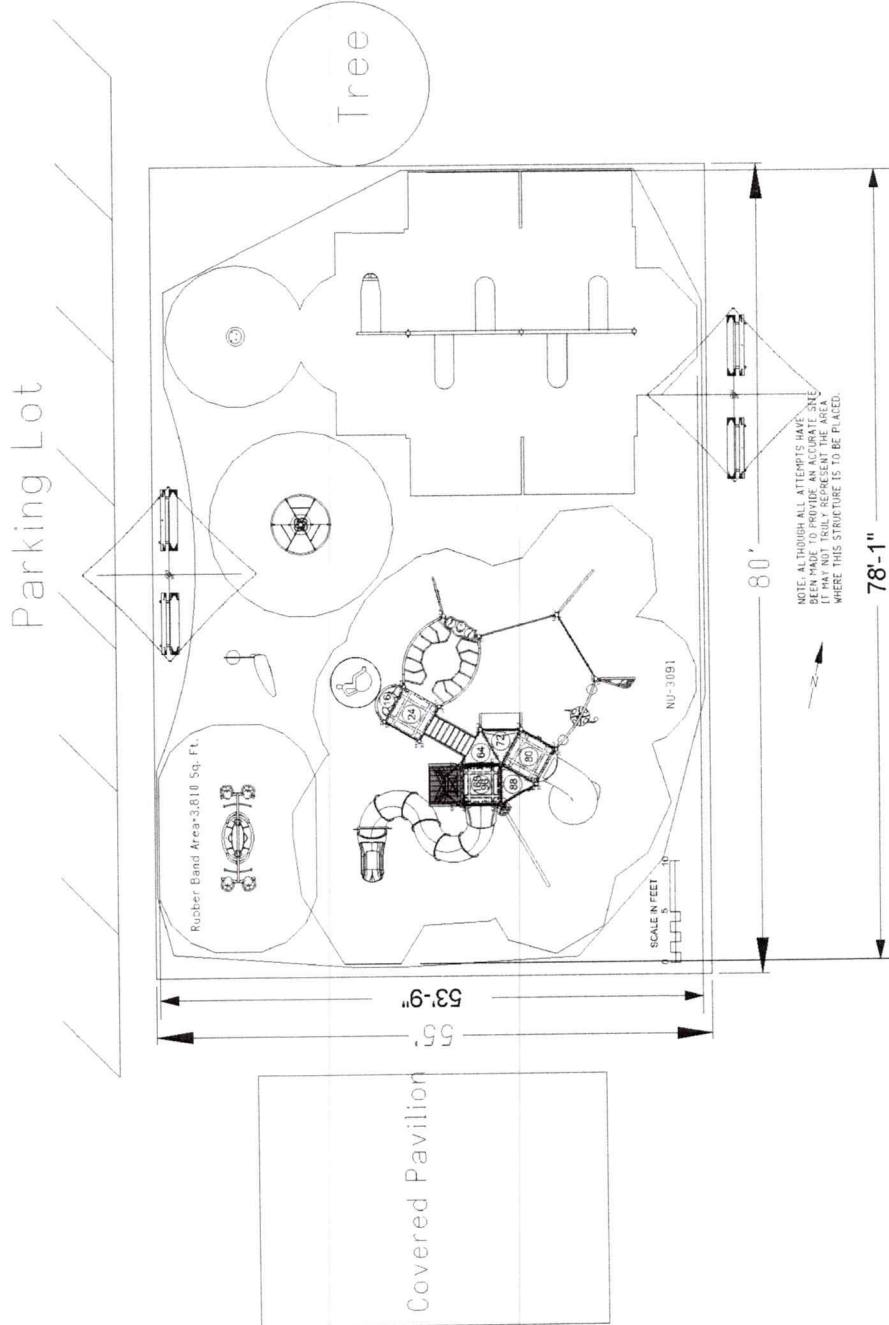


SERIES: Basics, Intensity, Nucleus
 SITE PLAN
 DRAWN BY: Landon Berendsen

McCall Park
 5500 McCall Rd
 Rincon, GA 31326

PlaySouth Playground Creators
 132-153864-2

May 07, 2022



INFORMATION
 MINIMUM FALL ZONE
 SURFACED WITH
 RESILIENT MATERIAL
 AREA

2972 SQ.FT.
 PERIMETER
 464 FT.

STRUCTURE SIZE
 53' 9" x 78' 1"

STRUCTURE IS DESIGNED
 FOR CHILDREN AGES:

- 6-23 MONTH OLDS
- 2-5 YEAR OLDS
- 5-12 YEAR OLDS
- 13 + YEAR OLDS



The play components identified
 in this plan are IPEMA
 certified. The use and layout of
 these components conform to the
 requirements of ASTM F1487.
 To verify product certification,
 visit www.ipema.org

The space requirements shown
 here are to ASTM standards.
 Requirements for other standards
 may be different.

The use and layout of play
 components identified in this plan
 conform to the CPSC guidelines.
 U.S. CPSC recommends the
 separation of age groups in
 playground layouts.

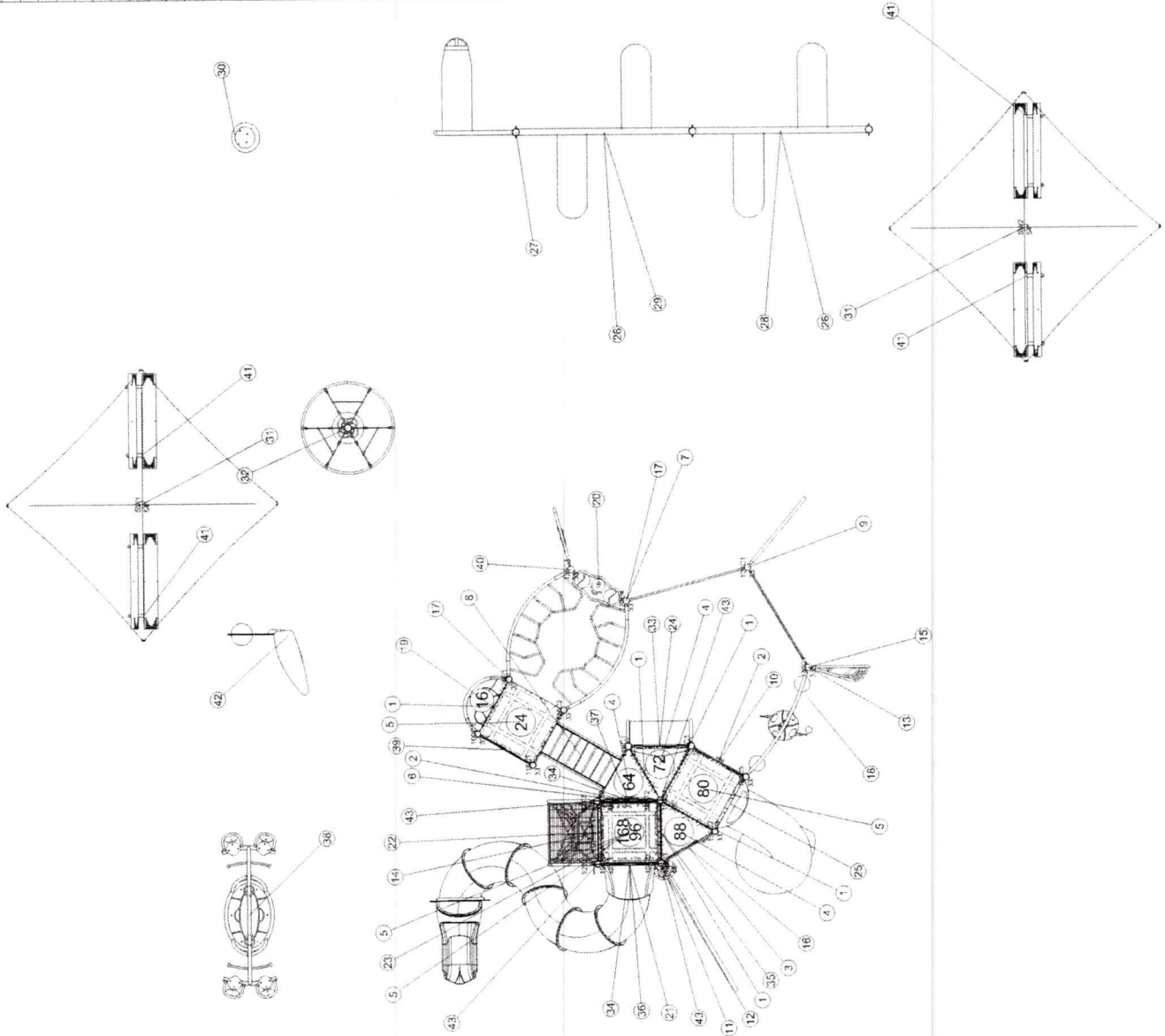
WARNING!

ACCESSIBLE SAFETY SURFACING MATERIAL IS REQUIRED BENEATH
 AND AROUND THIS EQUIPMENT.
 FOR SLIDE FALL ZONE SURFACING AREA SEE CPSC's Handbook for
 Public Playground Safety.
 PLATFORM HEIGHTS ARE IN INCHES ABOVE RESILIENT MATERIAL.

ADA ACCESSIBILITY GUIDELINE (ADAAG CONFORMANCE)

NUMBER OF PLAY EVENTS	28
NUMBER OF ELEVATED PLAY EVENTS	14
NUMBER OF ELEVATED PLAY EVENTS ACCESSIBLE BY RAMP	PROVIDED: 0
NUMBER OF ELEVATED PLAY EVENTS ACCESSIBLE BY TRANSFER SYSTEM	PROVIDED: 10
NUMBER OF ELEVATED PLAY EVENTS ACCESSIBLE BY RAMP OR TRANSFER SYSTEM	PROVIDED: 14
NUMBER OF GROUND LEVEL PLAY EVENTS	RECD: 5
NUMBER OF TYPES OF GROUND LEVEL PLAY EVENTS	PROVIDED: 7
RECD: 0	RECD: 0
RECD: 7	RECD: 7
RECD: 5	RECD: 5
RECD: 3	RECD: 3

ITEM	COMP.	DESCRIPTION
1	270-0009	8" CLOSURE PLATE, ELLIPSE
2	270-0120	EVOLUTION UNITARY ENCLOSURE
3	270-0122	EVOLUTION OFFSET ENCLOSURE
4	270-0129	TRIANGLE PLATFORM
5	270-0130	SQUARE PLATFORM
6	270-0238	ABSTRACT PLATFORM LADDER
7	370-0033	ODYSSEY POST LINK DOUBBLE
8	370-0041	EVOLUTION 40" TRANSITION ST
9	370-0810	POWER PEAK W/ PANELS
10	370-0872	TREE BRANCH CLIMBER 80"
11	370-1608	OVISTEP LAUNCH PAD
12	370-1612	APEX ELLIPSE CLIMBER
13	370-1620	TAKTIKS BOW CLIMBER
14	370-1649	EVOLUTION, DECK TO ROOF CL
15	370-1651	TRANGO CLIMBER, POST TO PO
16	370-1666	SHASTA CLIMBER, 80"-96"
17	370-1676	STRAIGHT HORIZONTAL LADDE
18	370-1696	VIA CLIMBER 48"-56"
19	470-0075	CRESCENT PLATFORM
20	470-0101	DYNAMIC PAD
21	470-0119	COBRA SLIDE CURVED 168"
22	470-0482	48" BENCH
23	470-0867	EVOLUTION SQUARE ROOF
24	470-0869	SERENITY SPOT, TO DECK
25	470-0872	EXTREME TWIST SPIRAL SLIDE
26	550-0112	BELT SEAT, 8" PAIR, STD CHAIN
27	550-0183	TOT BAY, ADD-ON, GALV CHAIN
28	550-0201	SINGLE POST SWING ASSEMBLY
29	550-0202	SINGLE POST SWING ADD-ON 5'
30	560-2573	KIDFORCE SPINNER
31	560-2609	FS EZ TENSION 12 X 12 SHADE
32	560-2610	SPINETIC W/ SPEED LIMITER
33	570-0100	EVOLUTION BARRIER
34	570-1544	EVOLUTION SHORT CURVED TO
35	570-1546	EVOLUTION TALL BARRIER
36	570-1858	3 IN A ROW PANEL, ABOVE PLAT
37	570-2701	COLLISION PANEL, ABOVE PLAT
38	570-2709	ORB ROCKER
39	570-2712	HIDE THE NUMBERS 2-SIDED PL
40	570-2729	CLASSIC GAME RING PANEL
41	580-0172	6" PVC TRADITIONAL BENCH W/
42	580-1365	MARKET DISCOVERY STATION
43	670-0423	POST, FOOTER EXTENSION 5' O

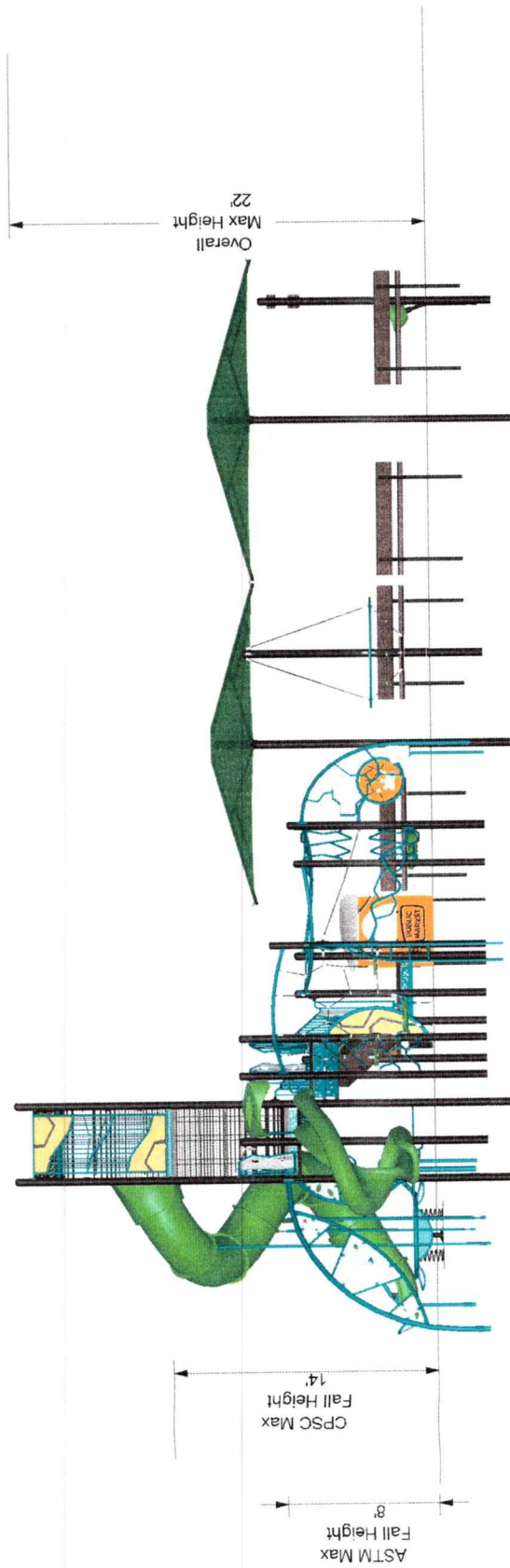


Burke

SERIES: Basics, Intensity, Nucleus
 COMPONENT PLAN
 DRAWN BY: Landon Berendsen

McCall Park
 5500 McCall Rd
 Rincon, GA 31326

May 07, 2022
 PlaySouth Playground Creators
 132-153864-2



The protective surfacing for this design must accommodate the critical fall height.

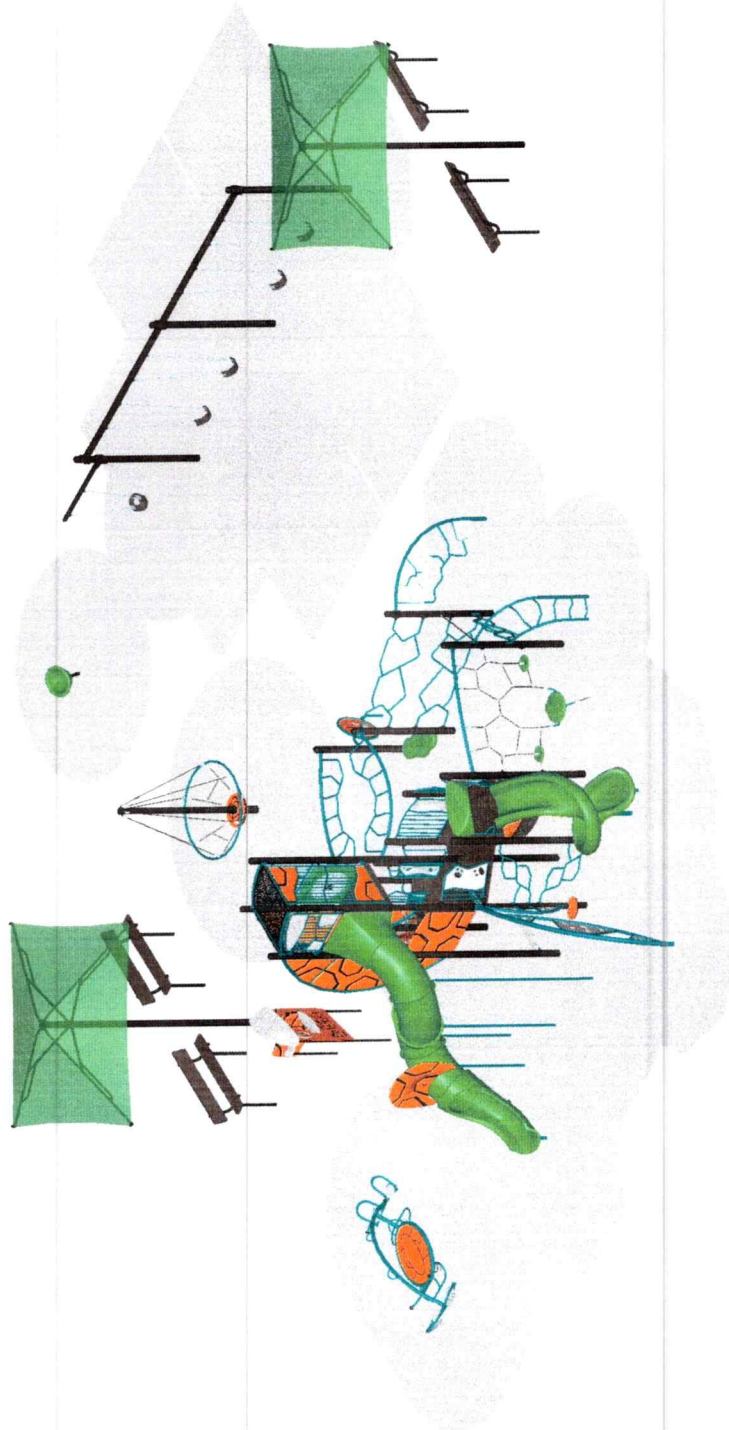


May 07, 2022

SERIES: Basics, Intensity, Nucleus
 ELEVATION PLAN
 DRAWN BY: Landon Berendsen

McCall Park
 5500 McCall Rd
 Rincon, GA 31326

PlaySouth Playground Creators
 132-153864-2



Burke

May 07, 2022

SERIES: Basics, Intensity, Nucleus
ISOMETRIC PLAN
DRAWN BY: Landon Berendsen

McCall Park
5500 McCall Rd
Rincon, GA 31326

PlaySouth Playground Creators
132-153864-2

BCI Burke Company, LLC PO Box 549 Fond du Lac, Wisconsin 54936-0549 Telephone 920-921-9220



Proposal # 132-153864-2

May 07, 2022
2022 Pricing

Proposal Prepared for:

Seth Zeigler
Effingham County Board of Commissioners
601 North Laurel Street
Springfield, GA 31329
Phone: 912-666-0550

Project Location:

McCall Park
Rincon, GA 31326

Proposal Prepared by:

PlaySouth Playground Creators
5500 McCall Rd PO Box 492467
Atlanta, GA 30349
Phone: 770-719-9005
Fax: 770-719-9005
sales@playsouth.net

Todd Wambold

Phone:

Fax:

todd@playsouth.net

Component No.	Description	Qty	User Cap	Ext. User Cap	Weight	Ext. Weight
Phase One						
Intensity						
370-0033	ODYSSEY POST LINK DOUBLE	1	4	4	78	78
370-1608	OVISTEP LAUNCH PAD	1	1	1	10	10
370-1612	APEX ELLIPSE CLIMBER	1	8	8	184	184
370-1620	TAKTIKS BOW CLIMBER	1	7	7	80	80
370-1676	STRAIGHT HORIZONTAL LADDER, N...	2	6	12	58	116
470-0101	DYNAMIC PAD	1	2	2	27	27
Nucleus						
072-0500-100C	5" OD X 100" CAPPED POST	1	0	0	53	53
072-0500-116C	5" OD X 116" CAPPED POST	1	0	0	61	61
072-0500-120C	5" OD X 120" CAPPED POST	4	0	0	63	252
072-0500-124C	5" OD X 124" CAPPED POST	1	0	0	65	65
072-0500-136C	5" OD X 136" CAPPED POST	1	0	0	71	71
072-0500-148C	5" OD X 148" CAPPED POST	1	0	0	78	78
072-0500-156C	5" OD X 156" CAPPED POST	3	0	0	82	246
072-0502-196S	5" OD X 196" SWAGED POST	4	0	0	103	412
072-5503-108T	5" OD X 108" TOP ALUMINUM CAP...	2	0	0	21	42
072-5503-92T	5" OD X 92" TOP ALUMINUM CAPP...	2	0	0	18	36
270-0009	8" CLOSURE PLATE, ELLIPSE	5	0	0	8	40
270-0120	EVOLUTION UNITARY ENCLOSURE	2	0	0	34	68
270-0122	EVOLUTION OFFSET ENCLOSURE	1	0	0	34	34
270-0129	TRIANGLE PLATFORM	3	2	6	48	144
270-0130	SQUARE PLATFORM	4	6	24	106	424
270-0298	ABSTRACT PLATFORM LADDER 32"	1	1	1	34	34
370-0041	EVOLUTION 40" TRANSITION STAI...	1	8	8	301	301
370-0810	POWER PEAK W/ PANELS	1	8	8	87	87
370-0872	TREE BRANCH CLIMBER 80"	1	4	4	33	33
370-1649	EVOLUTION, DECK TO ROOF CLIMB...	1	7	7	472	472
370-1651	TRANGO CLIMBER, POST TO POST	1	5	5	32	32
370-1666	SHASTA CLIMBER, 80"-96"	1	4	4	32	32
370-1696	VIA CLIMBER 48"-56"	1	2	2	68	68
470-0075	CRESCENT PLATFORM	1	1	1	52	52
470-0119	COBRA SLIDE CURVED 168"	1	3	3	512	512
470-0482	48" BENCH	1	3	3	18	18
470-0867	EVOLUTION SQUARE ROOF	1	0	0	76	76



Proposal # 132-153864-2

May 07, 2022
2022 Pricing

470-0869	SERENITY SPOT, TO DECK	1	2	2	285	285
470-0872	EXTREME TWIST SPIRAL SLIDE	1	2	2	217	217
570-0100	EVOLUTION BARRIER	1	0	0	52	52
570-1544	EVOLUTION SHORT CURVED TOP BA...	2	0	0	50	100
570-1546	EVOLUTION TALL BARRIER	1	0	0	78	78
570-1858	3-IN-A-ROW PANEL, ABOVE PLATF...	1	2	2	45	45
570-2701	COLLISION PANEL, ABOVE PLATFO...	1	1	1	55	55
570-2712	HIDE THE NUMBERS 2-SIDED PLAY...	1	2	2	70	70
570-2729	CLASSIC GAME RING PANEL	1	2	2	80	80
600-0104	NPPS SUPERVISION SAFETY KIT	1	0	0	3	3
660-0103	MAINTENANCE KIT, STRUCTURE	1	0	0	7	7
660-0104	INSTALLATION KIT, STRUCTURE	1	0	0	5	5
670-0423	POST, FOOTER EXTENSION 5" OD ...	4	0	0	11	44

Phase One User Capacity: 121
Phase One Weight: 5,279 lbs.
Phase One Price: \$87,352

Phase Two

Burke Basics

550-0112	BELT SEAT, 8' PAIR, STD CHAIN	2	2	4	20	40
550-0183	TOT BAY, ADD-ON, GALV CHAIN	1	1	1	51	51
550-0201	SINGLE POST SWING ASSEMBLY 5"...	1	0	0	220	220
550-0202	SINGLE POST SWING ADD-ON 5" OD	1	0	0	145	145
560-2573	KIDFORCE SPINNER	1	1	1	43	43
560-2609	FS EZ TENSION 12' X 12' SHADE...	2	0	0	342	684
560-2610	SPINETIC W/ SPEED LIMITER	1	8	8	266	266
570-2709	ORB ROCKER	1	8	8	494	494
580-0172	6' PVC TRADITIONAL BENCH W/BA...	4	0	0	119	476
580-1365	MARKET DISCOVERY STATION	1	10	10	210	210
660-0101	INSTALL KIT, BURKE BASICS - P...	1	0	0	2	2

Phase Two User Capacity: 32
Phase Two Weight: 2,631 lbs.
Phase Two Price: \$38,475

Total User Capacity: 153
Total Weight: 7,910 lbs.
Total Price: \$125,827

Information is relative to the May 6 2022 4:35AM database.

Special Notes:

Prices do not include freight, unloading, material storage, site excavation/preparation, removal of existing equipment, removal of excess soil from footing holes, site security, safety surfacing, installation, or sales tax (if applicable). Prices are based on standard colors per CURRENT YEAR BCI Burke Catalog. Custom colors, where available, would be an extra charge. **Pricing is valid for 30 days from the date of this proposal.**



Proposal # 132-153864-2

May 07, 2022

2022 Pricing

Selected Color List

Color Group	Color
<i>Phase 1</i>	
Accessory	Aqua
Kore Konnect	Black
Platform	Brown
1 Color Extruded/Flat	Gray
2 Color Extruded/Flat (outer)	Orange
2 Color Extruded/Flat (inner)	Black
Post	Black
Intensity/Rocky Mountain	Lime
Rotomolded	Lime
<i>Phase 2</i>	
Accessory	Aqua
1 Color Extruded/Flat	Gray
2 Color Extruded/Flat (outer)	Orange
2 Color Extruded/Flat (inner)	Black
Post	Black
Contemporary Swing Fittings	Black
Rotomolded	Lime
Canopy	Lime
Table/Bench Legs	Black
Table/Bench	Brown

TESTIMONIALS

"Service, Safety, Quality. Three words I would use to describe the people, business model, and overall organizational standards that inspires the BCI Burke Company. Every organization has a unique set of challenges and goals when it comes to building an educational environment - and from our experience, BCI Burke came to the table ready to work with us as partners to meet those challenges and goals head on.

We chose to work with BCI Burke because we needed a reliable company that would be able to provide nothing less than the highest quality product with our own time limitations. As with most other businesses, we did not have the luxury of making an investment into a project of this magnitude and not feel 100% certain that we had gotten the very best of our dollar. We also had to assure our stakeholders that we would see that investment last the test of time.

BCI Burke offered us superb and consistent customer service, the ability to achieve our goal on a fast timetable, and the confidence that our playground is genuinely the very best in design and safety. This is something that we will showcase in our school for many years to come.

After working with the company, I know personally they are committed to go the extra mile to satisfy your needs. BCI Burke is a master in their field but also provide the customer with an intuitive understanding of service".

Angela H. Brunini
Principal
St. Anthony Catholic School

"I am writing to tell you how much I enjoyed and appreciated working with your local representative...Through the years, I have worked with a number of playground companies, but never with anyone with the professionalism, commitment and follow-through of (your Burke Rep). We are all so excited about our children having the opportunity to play on your wonderful equipment; of course, we want everything! We are so impressed with the many, many possible designs. Thank you for the quality of your equipment and your local representatives."

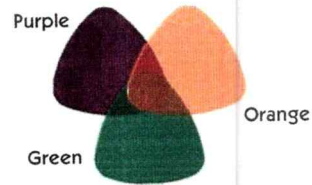
Nancy Emerson
Director
The Children's Center
Dallas, TX

COLORS THAT MOVE YOU

POWDER COAT PAINT



SOLIS HUE TOPPERS



ROCKIT CLIMBERS



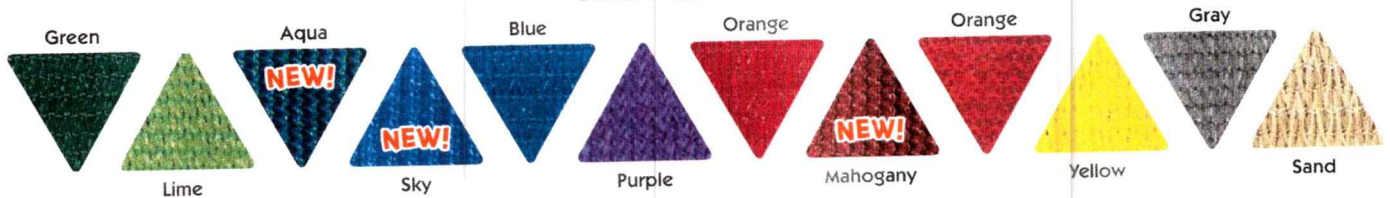
PLATFORMS



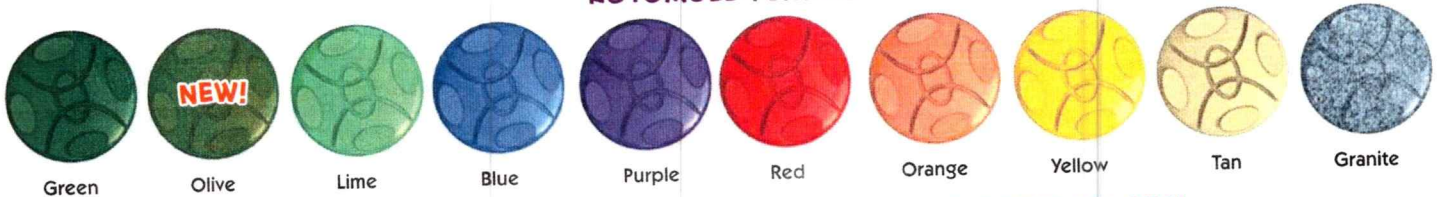
HDPE PLASTIC PANELS



SHADE CANOPIES



ROTOMOLD PLASTIC



VISIT BCIBURKE.COM/COLOR TO CUSTOMIZE YOUR PLAYGROUND COLORS!

BCIBURKE.COM

Burke

800.266.1250

BURKE GENERATIONS WARRANTY®

The Longest and Strongest warranty in the industry

BCI Burke Company, LLC ("Burke") warrants that all standard products are warranted to be free from defects in materials and workmanship, under normal use and service, for a period of one (1) year from the date of shipment.

We stand behind our products. In addition, the following products are warranted, under normal use and service from the date of shipment as follows:

- One Hundred (100) Year Limited Warranty on aluminum and steel upright posts (including Intensity®, Synergy™, Nucleus®, Voltage®, Little Buddies®, ELEVATE®, ACTIVATE®, INVIGORATE™) against structural failure due to corrosion, deterioration or workmanship.
- One Hundred (100) Year Limited Warranty on KoreConnect® clamps against structural failure due to corrosion, deterioration or workmanship.
- One Hundred (100) Year Limited Warranty on Hardware (nuts, bolts, washers)
- One Hundred (100) Year Limited Warranty on bolt-through fastening and clamp systems (Synergy™, Intensity®, Nucleus®, Voltage®, Little Buddies®, ELEVATE®).
- Twenty-Five (25) Year Limited Warranty on spring assemblies and aluminum cast animals.
- Fifteen (15) Year Limited Warranty on structure platforms and decks, metal roofs, table tops, bench tops, railings and barriers against structural failure due to materials or workmanship.
- Fifteen (15) Year Limited Warranty on all plastic components including StoneBorders against structural failure due to materials or workmanship.
- Ten (10) Year Limited Warranty on ShadePlay Canopies fabric, threads, and cables against degradation, cracking or material breakdown resulting from ultra-violet exposure, natural deterioration or manufacturing defects. This warranty is limited to the design loads as stated in the specifications.
- Ten (10) Year Limited Warranty on NaturePlay® Boulders and GFRC products against structural failure due to natural deterioration or workmanship. Natural wear, which may occur with any concrete product with age, is excluded from this warranty.
- Ten (10) Year Limited Warranty on Full Color Custom Signage against manufacturing defects that cause delamination or degradation of the sign. Full Color Custom Signs also carry a two (2) year warranty against premature fading of the print and graphics on the signs.
- Five (5) Year Limited Warranty on Intensity® and RopeVenture® cables and LEVEL X® flex bridge against premature wear due to natural deterioration or manufacturing defects. Determination of premature wear will be at the manufacturer's discretion.
- Five (5) Year Limited Warranty on moving parts, including swing components, against structural failure due to materials or workmanship.
- Five (5) Year Limited Warranty on PlayEnsemble® cables and mallets against defects in materials and workmanship.
- Three (3) Year Limited Warranty on electronic panel speakers, sound chips and circuit boards against electronic failure caused by manufacturing defects.

The warranty stated above is valid only if the equipment is erected in conformity with the layout plan and/or installation instructions furnished by BCI Burke Company, LLC using approved parts; have been maintained and inspected in accordance with BCI Burke Company, LLC instructions. Burke's liability and your exclusive remedy hereunder will be limited to repair or replacement of those parts found in Burke's reasonable judgment to be defective. Any claim made within the above stated warranty periods must be made promptly after discovery of the defect. A part is covered only for the original warranty period of the applicable part. Replacement parts carry the applicable warranty from the date of shipment of the replacement from Burke. After the expiration of the warranty period, you must pay for all parts, transportation and service charges.

Burke reserves the right to accept or reject any claim in whole or in part. Burke will not accept the return of any product without its prior written approval. Burke will assume transportation charges for shipment of the returned product if it is returned in strict compliance with Burke's written instructions.

THE FOREGOING WARRANTIES ARE EXCLUSIVE AND IN LIEU OF ANY OTHER WARRANTY, EXPRESS OR IMPLIED, INCLUDING BUT NOT LIMITED TO ANY IMPLIED WARRANTY OR MERCHANTABILITY OR FITNESS FOR A PARTICULAR PURPOSE. IF THE FOREGOING DISCLAIMER OF ADDITIONAL WARRANTIES IS NOT GIVEN FULL FORCE AND EFFECT, ANY RESULTING ADDITIONAL WARRANTY SHALL BE LIMITED IN DURATION TO THE EXPRESS WARRANTIES AND BE OTHERWISE SUBJECT TO AND LIMITED BY THE TERMS OF BURKE'S PRODUCT WARRANTY. SOME STATES DO NOT ALLOW THE EXCLUSION OF CERTAIN IMPLIED WARRANTIES, SO THE ABOVE LIMITATION MAY NOT APPLY TO YOU.

Warranty Exclusions: The above stated warranties do not cover: "cosmetic" defects, such as scratches, dents, marring, or fading; damage due to incorrect installation, vandalism, misuse, accident, wear and tear from normal use, exposure to extreme weather; immersion in salt or chlorine water, unauthorized repair or modification, abnormal use, lack of maintenance, or other cause not within Burke's control; and

Limitation of Remedies: Burke is not liable for consequential or incidental damages, including but not limited to labor costs or lost profits resulting from the use of or inability to use the products or from the products being incorporated in or becoming a component of any other product. If, after a reasonable number of repeated efforts, Burke is unable to repair or replace a defective or nonconforming product, Burke shall have the option to accept return of the product, or part thereof, if such does not substantially impair its value, and return the purchase price as the buyer's entire and exclusive remedy. Without limiting the generality of the foregoing, Burke will not be responsible for labor costs involved in the removal of products or the installation of replacement products. Some states do not allow the exclusion of incidental damages, so the above exclusion may not apply to you.

The environment near a saltwater coast can be extremely corrosive. Some corrosion and/or deterioration is considered "normal wear" in this environment. Product installed within 500 yards of a saltwater shoreline will only be covered for half the period of the standard product warranty, up to a maximum of five years, for defects caused by corrosion. Products installed in direct contact with saltwater or that are subjected to salt spray are not covered by the standard warranty for any defects caused by corrosion.

Contact your local Burke Representative for warranty information regarding Burke Turf® and Burke Tile products.

Terms of Sale

Pricing: Prices published in this catalog are in USD, are approximate and do not include shipping & handling, surfacing, installation nor applicable taxes. All prices are subject to change without notice. Contact your Burke representative for current pricing. Payments are to be made in USD.

Weights: Weights are approximate and may vary with actual orders.

Installation: All equipment is shipped unassembled. For a list of factory-certified installers in your area, please contact your Burke representative.

Specifications: Product specifications in this catalog were correct at the time of publication. However, product improvements are ongoing at Burke, and we reserve the right to change or discontinue specifications without notice.

Loss or Damage in Transit: A signed bill of lading is our receipt from a carrier that our shipment to you was complete and in good condition upon arrival. Before you sign, please check the Bill of Lading carefully when the shipment arrives to make sure nothing is missing and there are no damages. Once the shipment leaves our plant, we are no longer responsible for any damage, loss or shortage.

For more information regarding the warranty, call Customer Service at 920-921-9220 or 1-800-356-2070.

01/2022

BCIBURKE.COM

Burke

800.266.1250