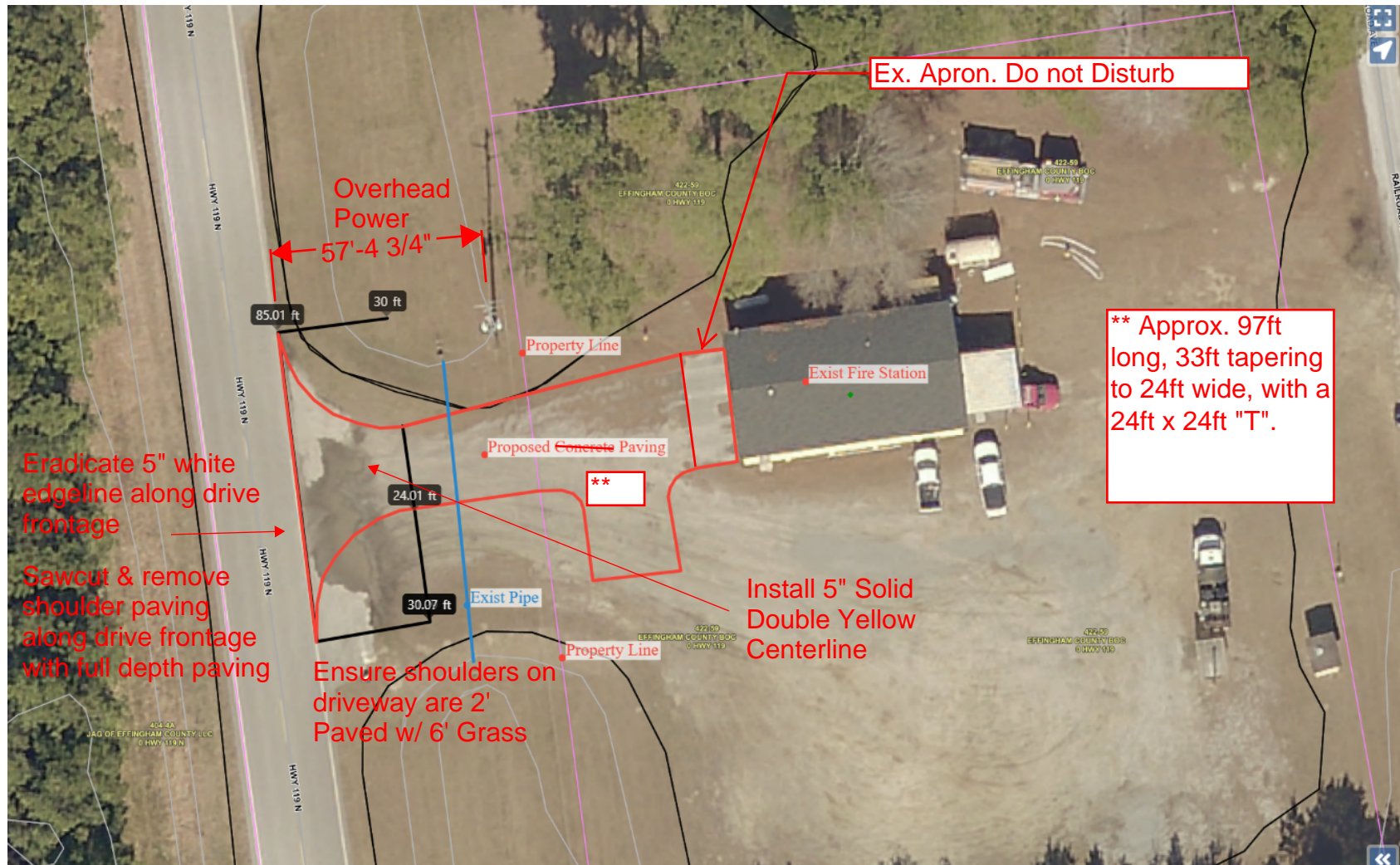


SR 119 18.86
Effingham County
55 MPH



Pavement - GDOT Spec. 4" Graded Aggregate Base and 4" (2 lifts) 12.5mm Asphalt Surface Mix
Remove and grade existing GAB and soil and compact subgrade to 8" below existing surface grade.

Drainage – Ex. Pipe to remain.