

Chesterfield.

SITE DEVELOPMENT
OF



GITC - BUILDING 4A
CHATHAM & EFFINGHAM COUNTY, GEORGIA

PREPARED FOR:
CHESTERFIELD LLC
100 BULL STREET
SUITE 200
SAVANNAH, GEORGIA 31401

TM#
04660008A00

LAT: N 32.2269
LONG: W 81.2133

JANUARY 26, 2022
REVISED: MARCH 11, 2022

J-26838.0029

PREPARED BY:



VICINITY MAP
SCALE: 1" = 3000'

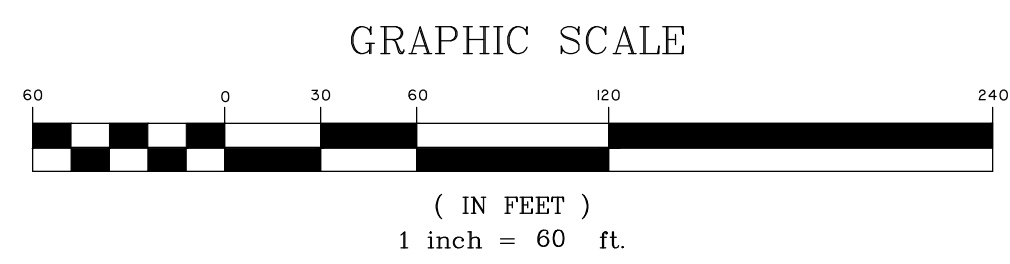
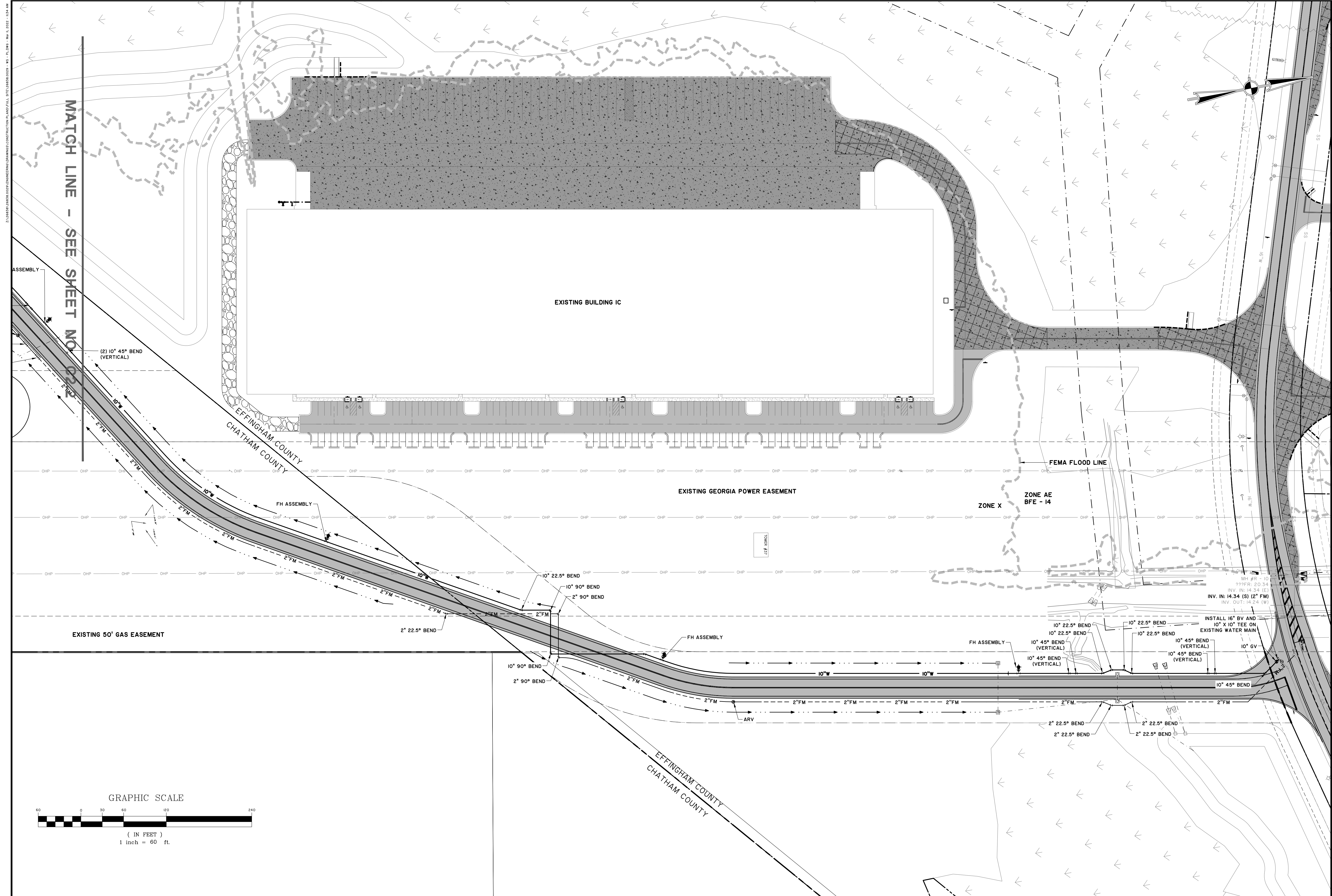
Sheet List Table	
Sheet Number	Sheet Title
CO.0	COVER SHEET
G1.1	GENERAL NOTES
G2.1	SHEET INDEX
G3.1	EXISTING CONDITIONS PLAN
G3.2	EXISTING CONDITIONS PLAN
G3.3	EXISTING CONDITIONS PLAN
G3.4	EXISTING CONDITIONS PLAN
G4.1	ACCESSIBLE ROUTE PLAN
ECO.1	ES & PC NOTES
ECO.2	ES & PC NOTES
ECO.3	ES & PC NOTES
EC1.1	ES&PC PLAN - INITIAL
EC1.2	ES&PC PLAN - INITIAL
EC1.3	ES&PC PLAN - INITIAL
EC1.4	ES&PC PLAN - INITIAL
EC2.1	ES & PC PLAN - INTERMEDIATE
EC2.2	ES & PC PLAN - INTERMEDIATE
EC2.3	ES & PC PLAN - INTERMEDIATE
EC2.4	ES & PC PLAN - INTERMEDIATE
EC3.1	ES & PC PLAN - FINAL
EC3.2	ES & PC PLAN - FINAL
EC3.3	ES & PC PLAN - FINAL
EC3.4	ES & PC PLAN - FINAL
EC4.1	EROSION CONTROL DETAILS
EC4.2	EROSION CONTROL DETAILS
C1.1	STRIPING, SIGNAGE, AND LAYOUT PLAN
C1.2	STRIPING, SIGNAGE, AND LAYOUT PLAN
C1.3	STRIPING, SIGNAGE, AND LAYOUT PLAN
C1.4	STRIPING, SIGNAGE, AND LAYOUT PLAN
C2.1	WATER AND SEWER PLAN
C2.2	WATER AND SEWER PLAN
C2.3	WATER AND SEWER PLAN
C2.4	WATER AND SEWER PLAN
C2.5	SEWER PROFILE
C2.6	FORCEMAIN PROFILE
C2.7	WATER PROFILE
C2.8	WATER AND SEWER DETAILS
C2.9	WATER AND SEWER DETAILS
C2.10	WATER AND SEWER DETAILS
C2.11	WATER AND SEWER DETAILS
C2.12	WATER AND SEWER DETAILS
C2.13	PUMP STATION DETAILS
C3.1	PAVING, GRADING & DRAINAGE PLAN
C3.2	PAVING, GRADING & DRAINAGE PLAN
C3.3	PAVING, GRADING & DRAINAGE PLAN
C3.4	PAVING, GRADING & DRAINAGE PLAN
C3.5	ROAD PLAN & PROFILE
C3.6	ROAD PLAN & PROFILE
C4.1	PAVING GRADING AND DRAINAGE DETAILS
C4.2	PAVING GRADING AND DRAINAGE DETAILS
C4.3	PAVING GRADING AND DRAINAGE DETAILS

REVISION HISTORY			
REV. NO.	REVISION	BY	DATE
1	REVISED PER CITY OF PORT WENTWORTH COMMENTS	SGJ	3/10/22

SUBMITTAL HISTORY	
CITY OF PORT WENTWORTH	DATE
	1/26/22



J-26838.0029
01/26/2022
GITC - BUILDING 4A



NO.	REVISIONS	BY	DATE

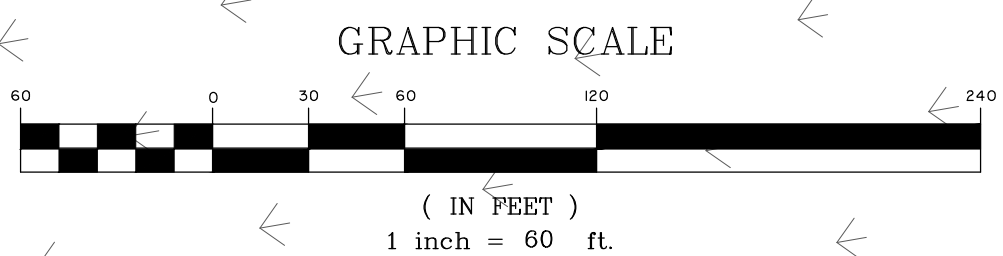
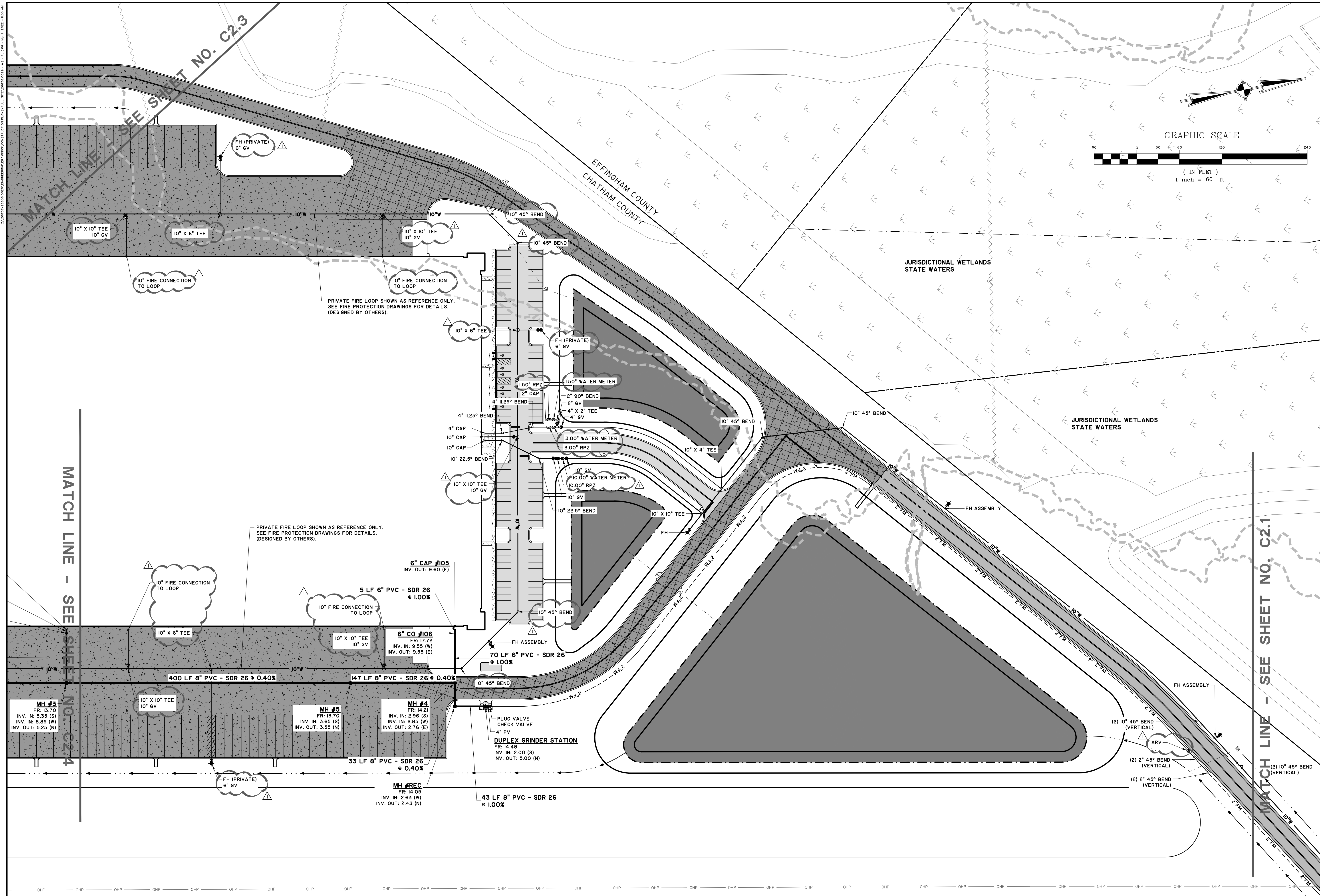
THOMAS & HUTTON
 50 Park of Commerce Way
 Savannah, GA 31405 • 912.234.5300
 www.thomasandhutton.com

CHESTERFIELD LLC
 CHATHAM & EFFINGHAM COUNTY, GEORGIA
 GITC - BUILDING 4 A
 WATER AND SEWER PLAN

JOB NO: J-26838.0029
 DATE: 01/26/2022
 DRAWN: SGJ
 DESIGNED: SGJ
 REVIEWED: FIT
 APPROVED: JOC
 SCALE: 1" = 60'

C2.1

PERMIT SET - FOR REVIEW PURPOSES ONLY



NO.	REVISIONS	BY	DATE
I	REVISED PER CITY OF PORT WENTWORTH COMMENTS	SGJ	3/10/22

THOMAS & HUTTON
 50 Park of Commerce Way
 Savannah, GA 31405 • 912.234.5300
 www.thomasandhutton.com

CHESTERFIELD LLC
 CHATHAM & EFFINGHAM COUNTY, GEORGIA
 GITC - BUILDING 4 A
 WATER AND SEWER PLAN

JOB NO:	J-26838.0029
DATE:	01/26/2022
DRAWN:	SGJ
DESIGNED:	SGJ
REVIEWED:	FIT
APPROVED:	JOC
SCALE:	1" = 60'

C2.2

PERMIT SET - FOR REVIEW PURPOSES ONLY

