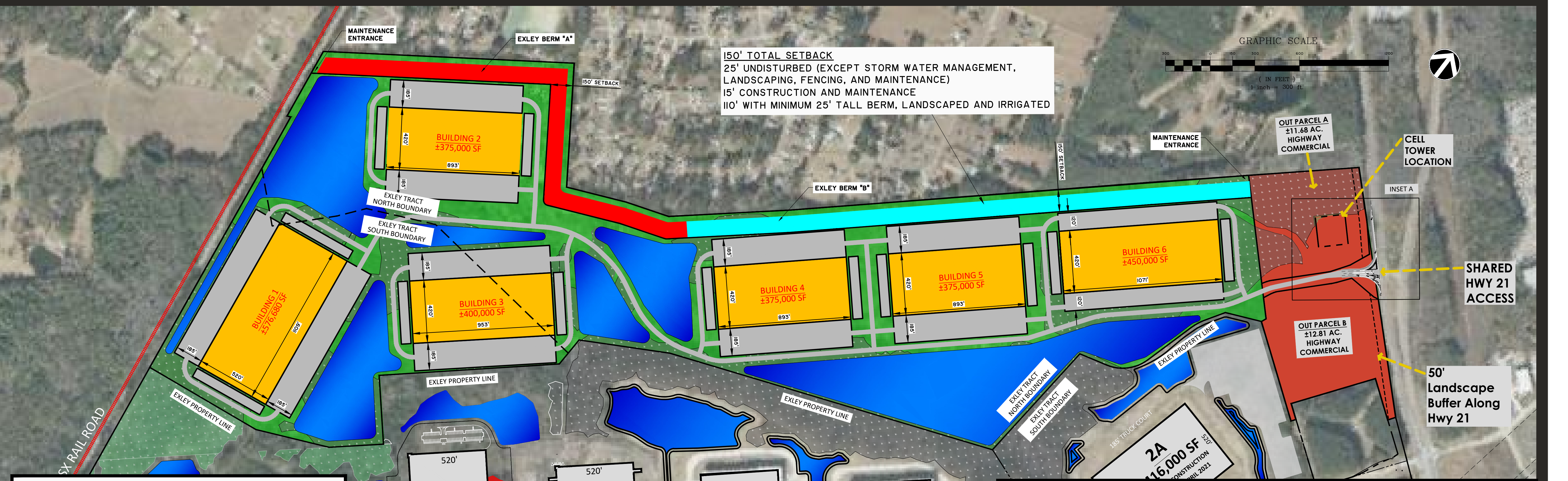
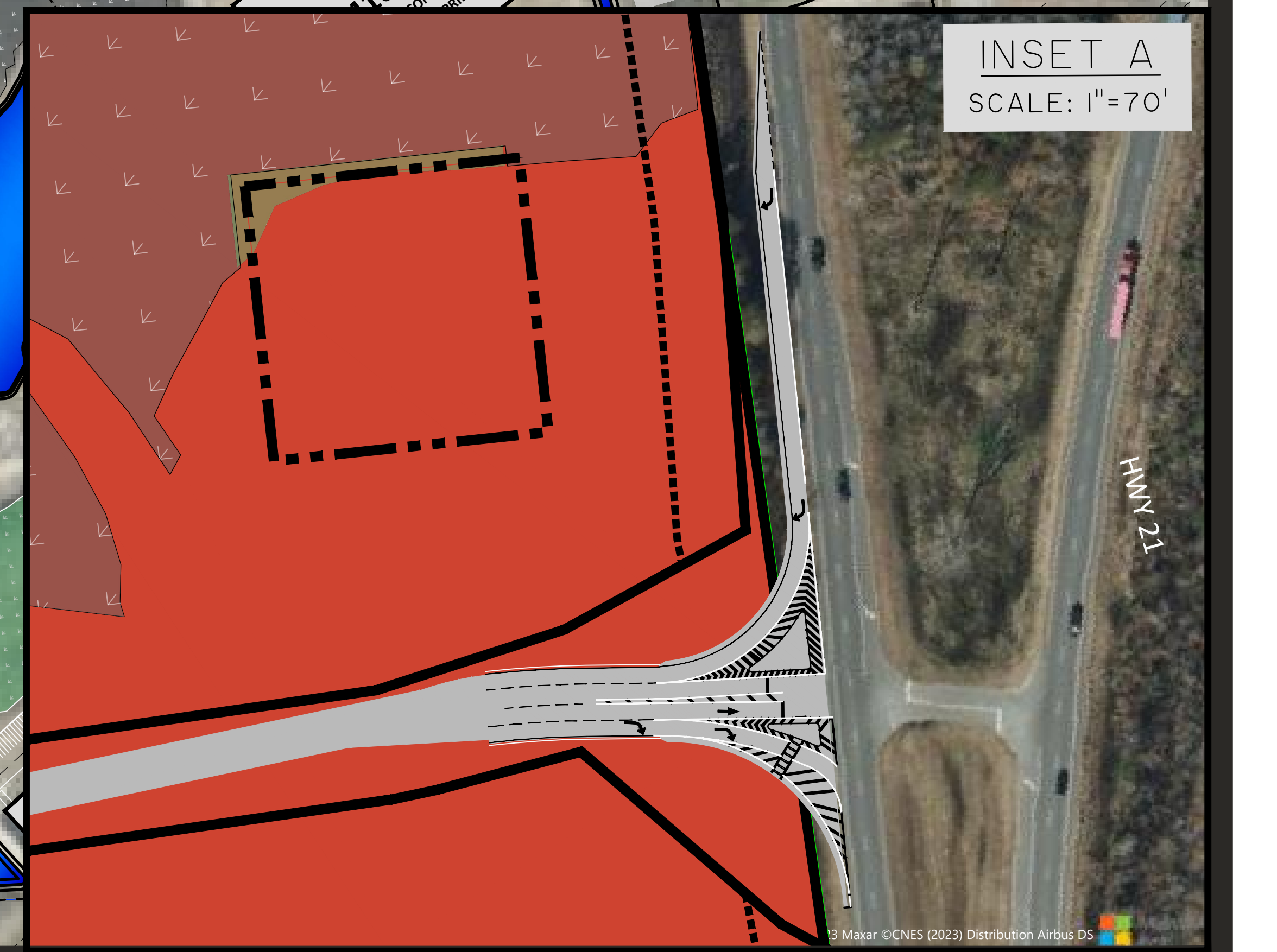
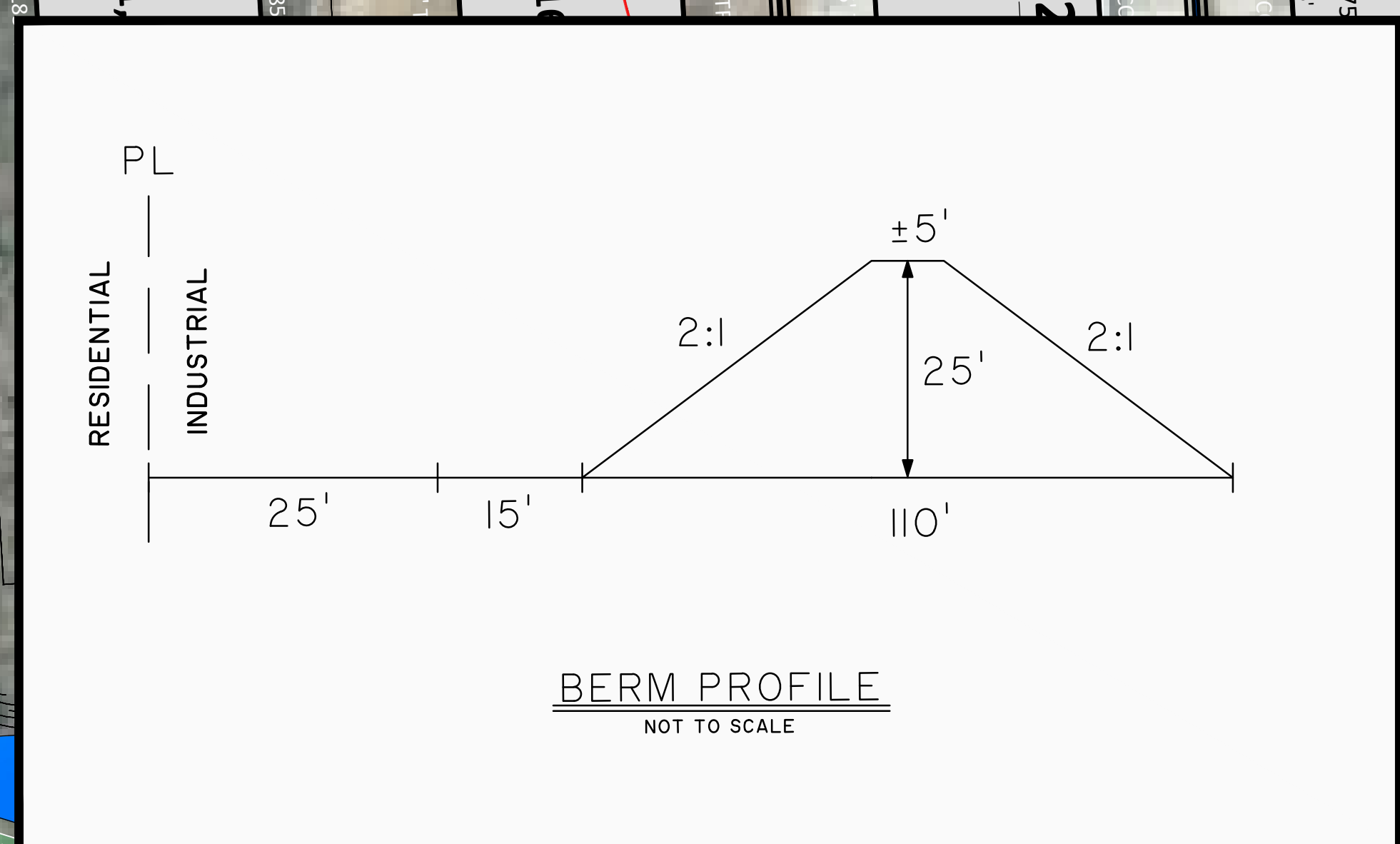
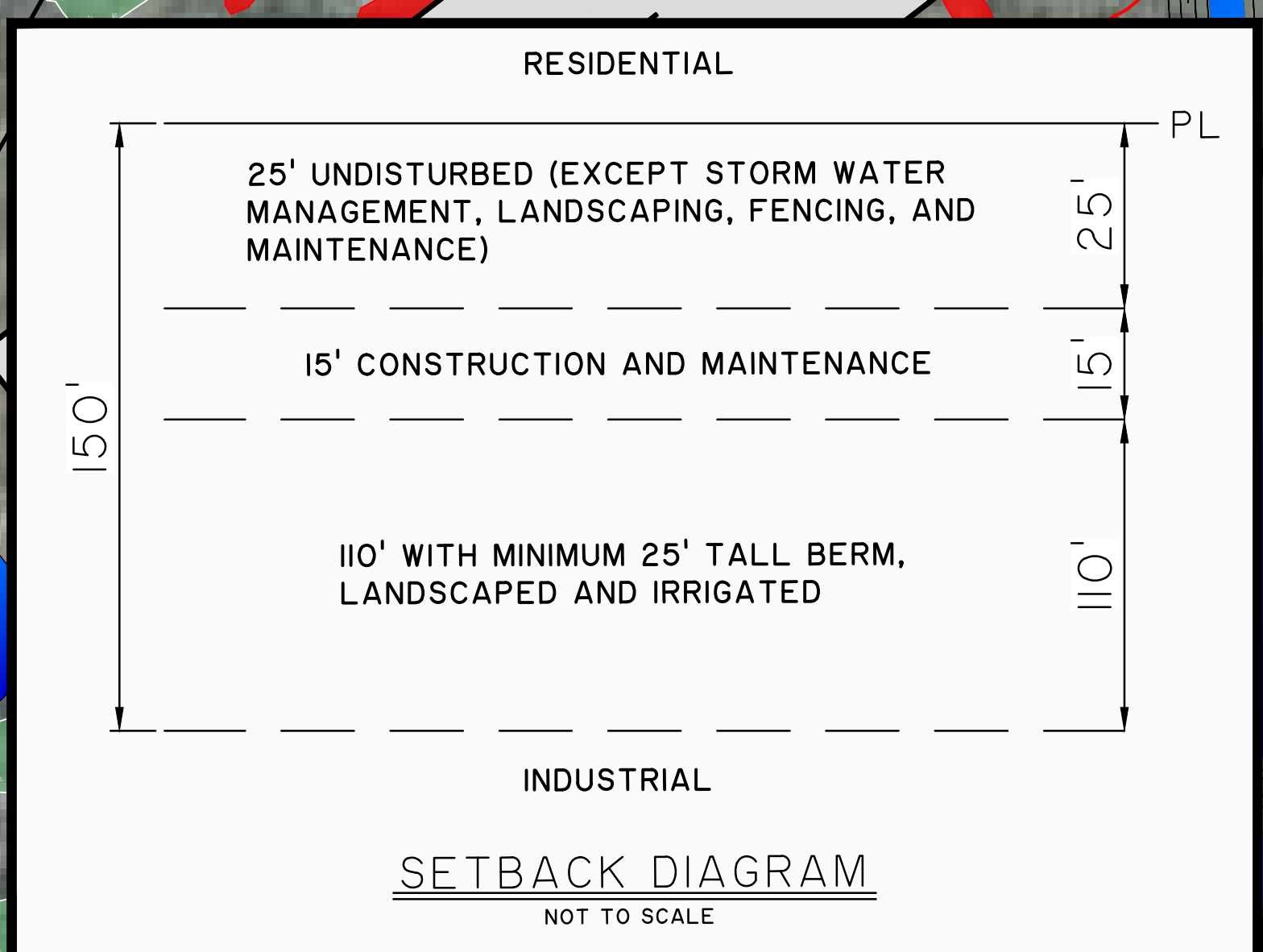


150' TOTAL SETBACK
 25' UNDISTURBED (EXCEPT STORM WATER MANAGEMENT, LANDSCAPING, FENCING, AND MAINTENANCE)
 15' CONSTRUCTION AND MAINTENANCE
 110' WITH MINIMUM 25' TALL BERM, LANDSCAPED AND IRRIGATED



BUILDING AREA BREAKDOWN

EXLEY NORTH	±2,551,680 TOTAL BUILDING SF
G.I.T.C (SOUTH OF EXLEY PROPERTY LINE)	±6,946,413 TOTAL BUILDING SF
TOTAL:	±9,498,093 TOTAL BUILDING SF



INDUSTRIAL SETBACK & BERM EXHIBIT C
EXLEY NORTH
 EFFINGHAM COUNTY / GA

August 2, 2023

This map illustrates a general plan of the development which is for discussion purposes only. Does not limit or bind the owner and is subject to change and position locations are for illustrative purposes only and are subject to an accurate survey and property description. The producer assumes no legal responsibility for the appreciation or depreciation of any premises, commercial or otherwise, by reason of their inclusion or exclusion from this map. The information contained in this map is subject to change with out notice and is for illustrative purposes only. Unit counts shown above are approximate and may change. Values were provided by outside sources and have not been verified.