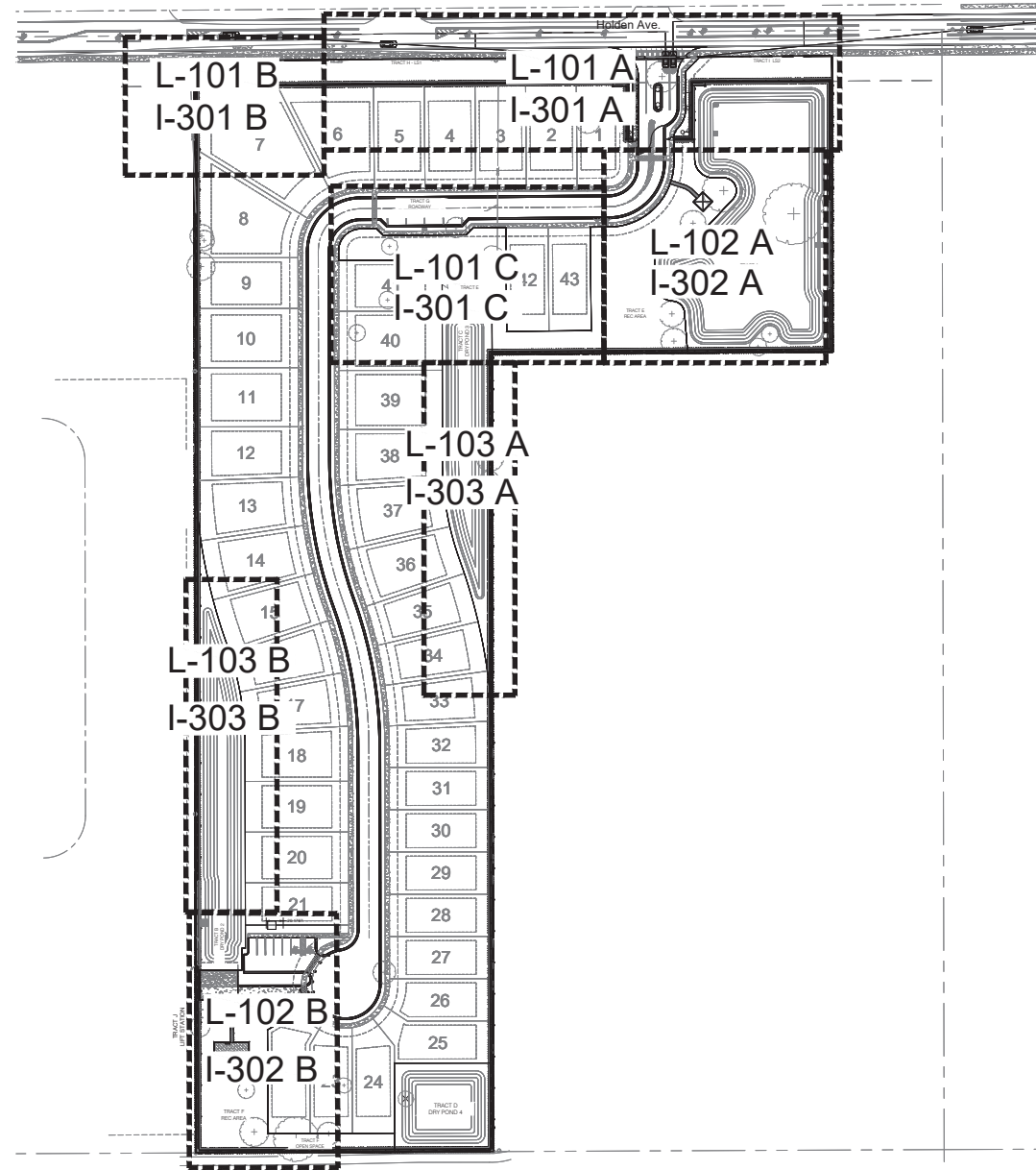


RECEIVED
 9/9/2022
CITY OF EDGEWOOD

CITY OF EDGEWOOD
Zoning Plans Review
 By Brett Sollazzo Date 9/26/2022
 Approved Rejected
 Hold on Certificate of Occupancy?
 Yes No



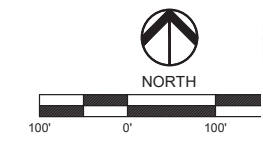
daly design group inc.
 Land Planning, Landscape Architecture, Project Management, Development Consulting
 604 Courtland St., Suite 101, Orlando, FL 32804 (407) 740-7373 www.dalydesign.com

REV	DATE	DESCRIPTION	BY

Key Sheet
 Landscape Construction Plans
 Haven Oaks
 Orlando, Florida

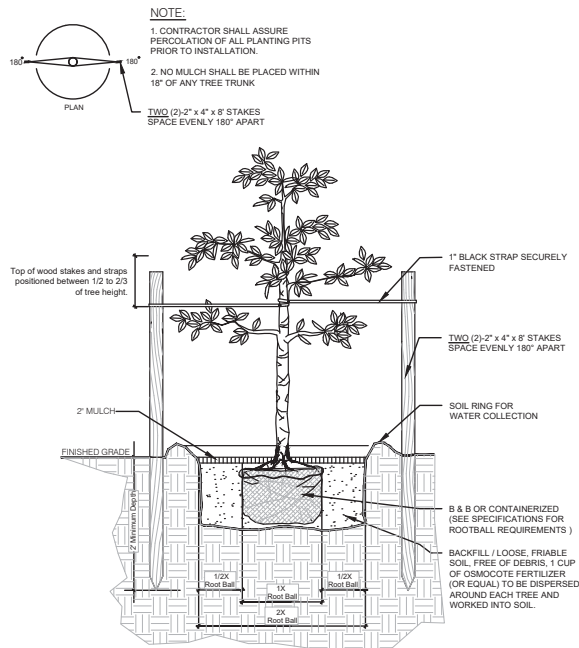


Digitally signed by William G Maki
 Date: 2022.09.09 14:34:56
 0100

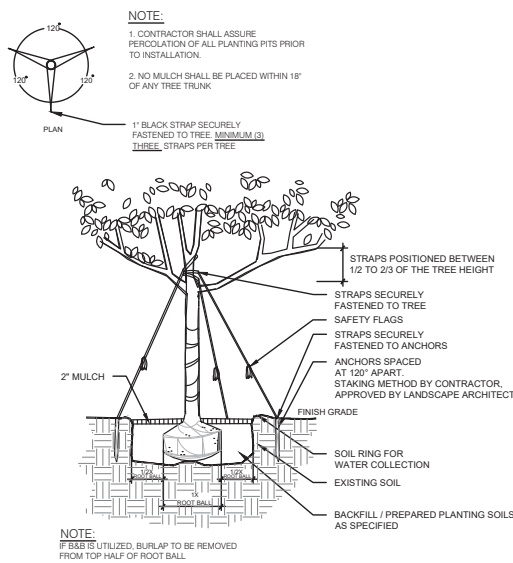


PROJECT NO. 1930
 SCALE 1"= 100'
 DATE June 2022
 SHEET K-100

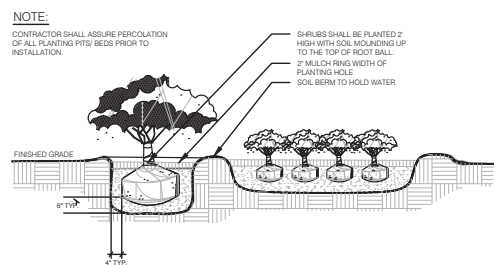
PLANT DETAILS



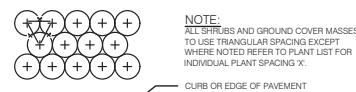
SMALL TREE GUYING DETAIL
Detail for trees between 1" and 2.5" cal. NOT TO SCALE



LARGE TREE GUYING DETAIL
Detail for trees greater than 3" cal. NOT TO SCALE



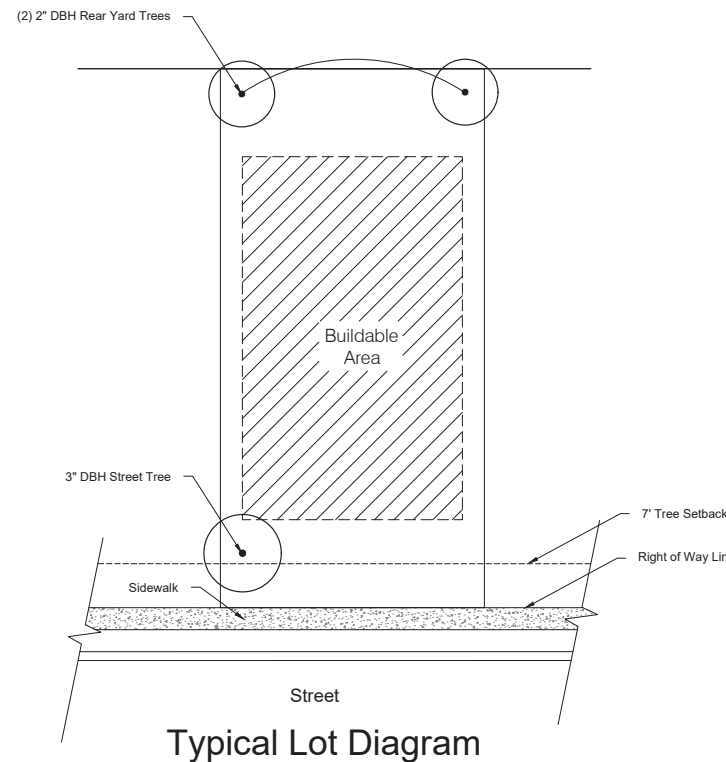
SHRUB AND GROUND COVER DETAIL
NOT TO SCALE



TYPICAL PLANT SPACING
NOT TO SCALE

PLANT SCHEDULE

Quantity	SIMBOL	Botanical	Common	Specifications
68	AD	Asparagus aethiopicus	Foxtail Fern	Min. 3 gal., Full Pot 24" o.c.
6	BN	Bismarckia nobilis	Bismarck Palm	10' Clear Trunk
45	CA	Crinum asiaticum	Crinum Lily	Min. 7 gal., 24" ht. x 24" spd.
215	DE	Duranta erecta 'Gold Mound'	Gold Mound Duranta	Min. 7 gal., 24" ht. x 24" spd. 30" o.c.
34	LIT	Ligustrum japonicum	Japanese Privet	Min. 30 gal., 8' ht., 3 steams, 3/4" caliper
18	QV	Quercus virginiana	Southern Live Oak	Min. 200 gal., 16' ht., 5" DBH
9	QV1	Quercus virginiana	Southern Live Oak	Min. 200 gal., 18' ht., 6" DBH
40	QV2	Quercus virginiana	Southern Live Oak	Min. 15 gal., 8' ht., 6" DBH
366	TAM	Trachelospermum asiaticum	Asian Jasmine	Min. 1 gal., full pot 18" o.c.
21	VS	Viburnum suspensum	Sandankwa Viburnum	Min. 7 gal., 20" ht. x 20" spd., 36" o. c.
49,752 SF	SOD A	St. Augustine Sod		



Typical Lot Diagram

GENERAL LANDSCAPE NOTES

- Landscape Contractor shall be responsible for all materials and plants as called for on the landscape plans. The list of plant quantities accompanying the plans shall be used as a guide only. Contractor shall verify all quantities and report any discrepancies at time of bidding.
- All plant material shall be graded Florida No. 1 or better, as outlined by "Grades and Standards for Nursery Plants", Florida Department of Agriculture and Consumer Services, division of Plant Industry.
- All planting shall be top dressed with a minimum of 2" pine bark.
- The Landscape Contractor shall be wholly responsible for the stability and plumb condition of all trees and shrubs and shall be legally liable for any damage caused by instability of plant material. The staking method, if not shown by detail on this plan, shall be approved by the owner or his/her authorized representative.
- Every possible safeguard shall be taken to protect existing trees that are shown on the landscape plan to be preserved.
- The Landscape Contractor is responsible for cleaning all debris associated with their work.
- Height and spread specifications refer to the overall plant form. Singular branches may not be used to meet minimum requirements. Tree size to be measured at DBH 4.5' above grade.
- All landscaping shall be installed according to accepted commercial planting procedures. Soil, shall be free of limerock, pebbles, or other construction debris.
- All landscaping shall conform to the standards set forth in the city of Edgewood Land Development code (unless a higher standard is required per the Development agreement).
- Landscaping shall not interfere with power lines, sewer or water pipes or any other existing or proposed utilities.
- All landscaping areas shall be 100% irrigated.
- Ball & burlap material shall be an acceptable alternative to container grown trees.
- Occasionally there is the potential for site modification due to revised field grading, clearing of existing tree canopy or other unforeseen conditions. The Landscape Contractor shall be responsible for informing the Owner and Landscape Architect of site conditions adverse to the healthy establishment of any plant material prior to planting so that a resolution may be achieved.
- The Landscape Contractor shall be responsible for arranging a pre-construction meeting with the Owner and Landscape architect in order to address and clarify any questions, concerns and/or conditions related to these drawings or the existing site.
- Landscape Contractor shall use appropriate container size to meet minimum plant height, if minimum plant height can not be met with specified container size.
- This Landscape plan has been prepared by a certified Landscape Architect who is registered in the State of Florida.

CITY OF EDGEWOOD
Zoning Plans Review
By Brett Sollazzo Date 9/26/2022
Approved X Rejected
Hold on Certificate of Occupancy?
Yes X No

Note:
All replacement trees shall have a 1 year warranty from the date of final acceptance, whether on common area or private lots. Replacement trees that die within the 1 year warranty period shall be replaced by the same species and size originally specified.

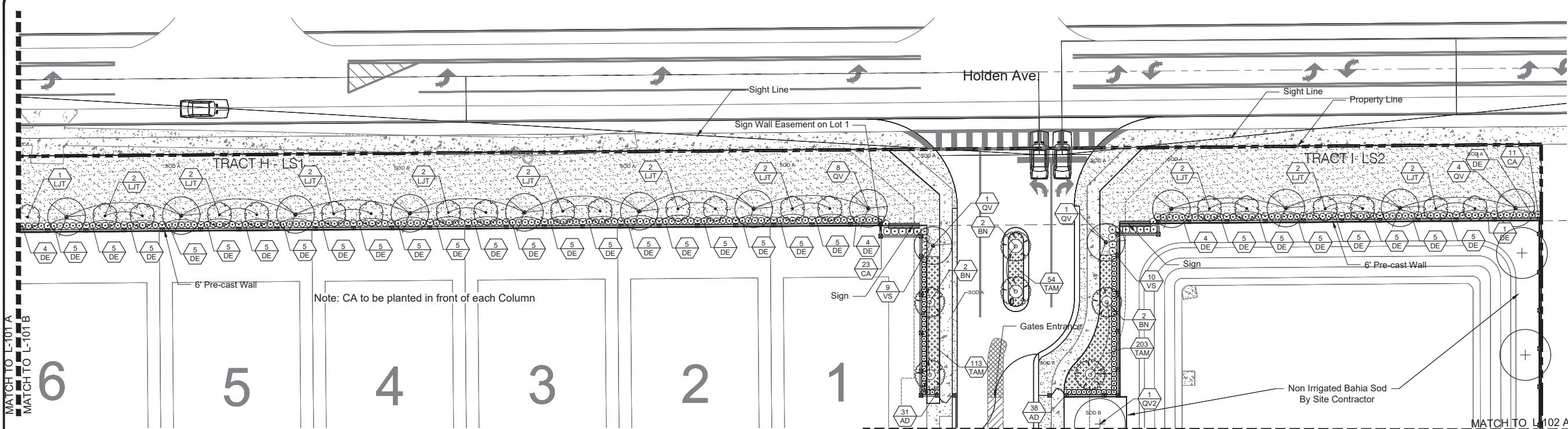
Digitally signed by William G. Maki
Date: 2022.09.09 14:35:09 -0400

daly design group inc.
Land Planning, Landscape Architecture, Project Management, Development Consulting
604 Courtland St., Suite 101, Orlando, FL 32804 (407) 740-7373 www.dalydesign.com

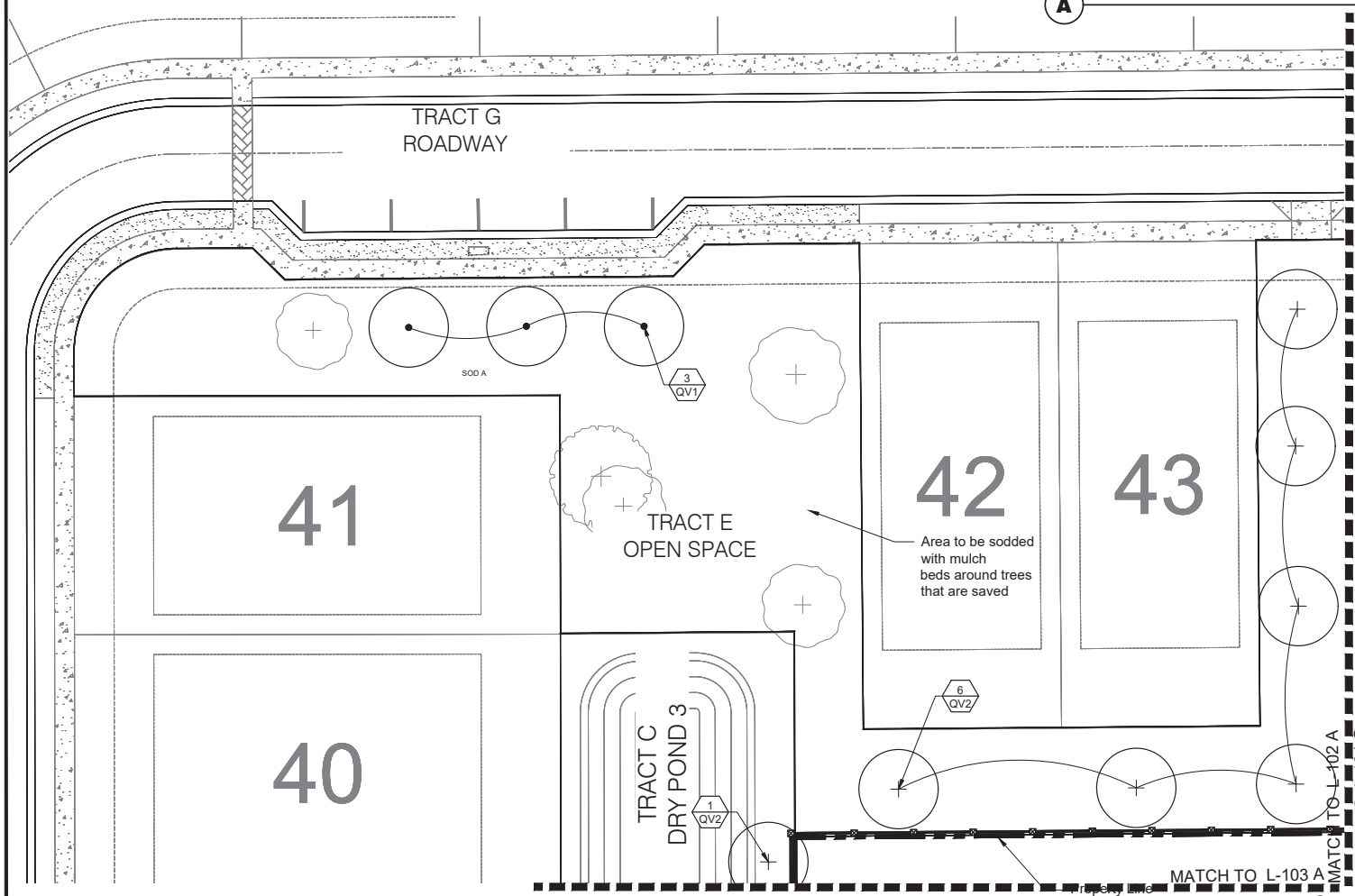
REV	DATE	DESCRIPTION	BY
2	09.09.22	Revisions per City Comments	GH

Plant Schedule and Details
Landscape Construction Plans
Haven Oaks
Orlando, Florida

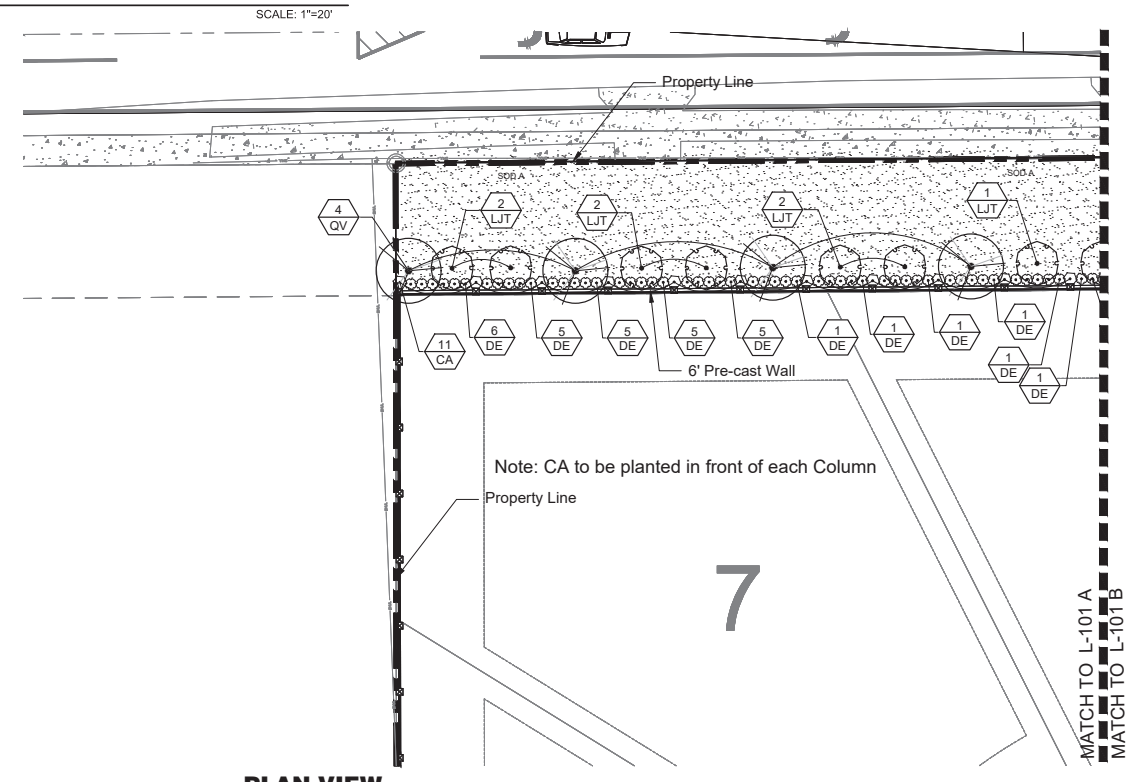
PROJECT NO. 1930
SCALE NTS
DATE June 2022
SHEET L-001



A PLAN VIEW LANDSCAPE TRACT

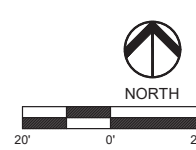


C PLAN VIEW TRACT D RECREATION



B PLAN VIEW TRACT D

CITY OF EDGEWOOD
Zoning Plans Review
 By Brett Sollazzo Date 9/26/2022
 Approved Rejected
 Hold on Certificate of Occupancy?
 Yes No



Digitally signed by
William G Maki
 Date: **2022.09.09**
 14:35:22
 04'00'

daly design group inc.
 Land Planning, Landscape Architecture, Project Management, Development Consulting
 604 Courtland St., Suite 101, Orlando, FL 32804 (407) 740-7373 www.dalydesign.com

REV	DATE	DESCRIPTION

Landscape Tract & Tract D
 Landscape Construction Plans
 Haven Oaks
 Orlando, Florida



PROJECT NO.
 1930
 SCALE
 1"= 20'
 DATE
 June 2022
 SHEET
 L-101

CITY OF EDGEWOOD

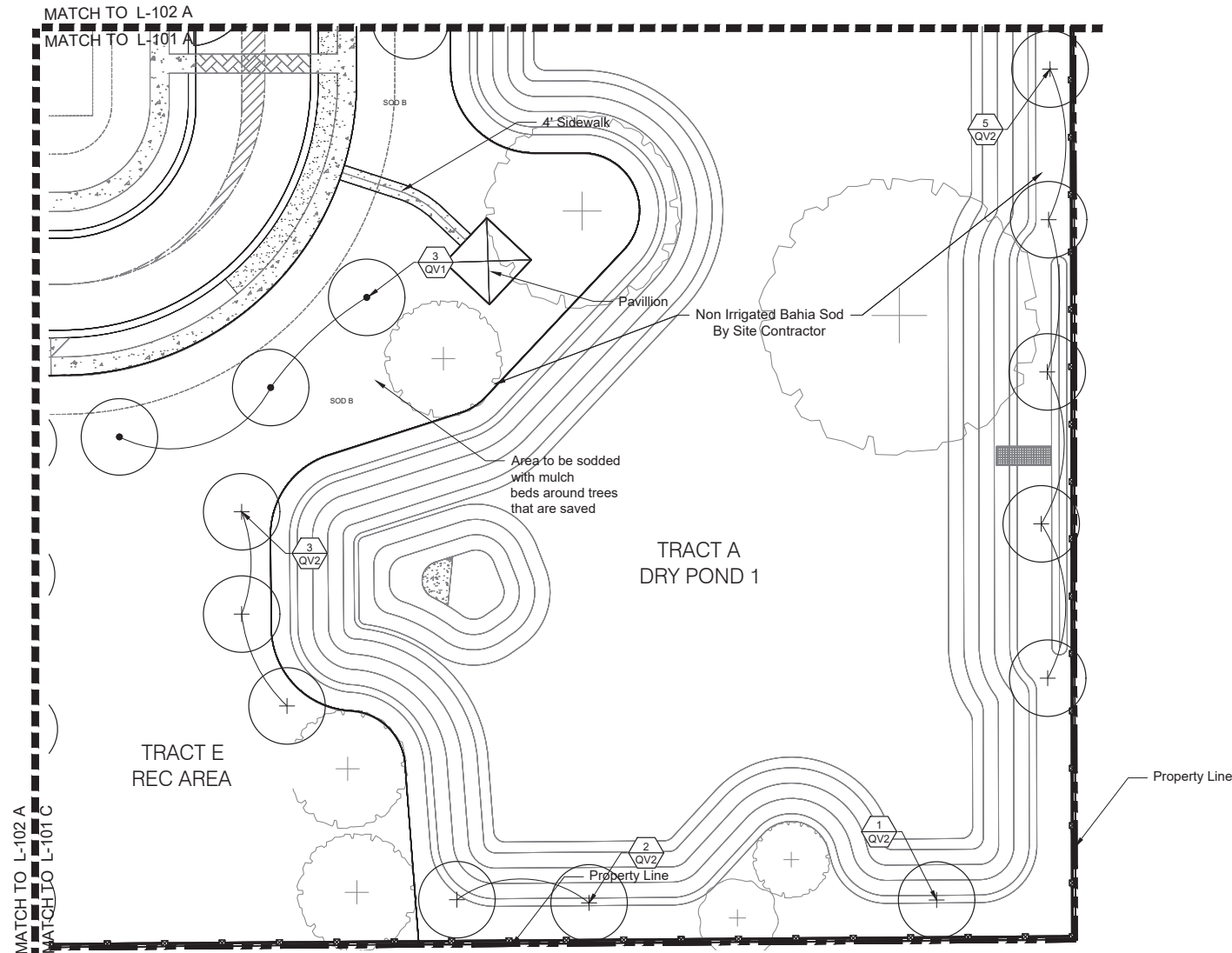
Zoning Plans Review

By Brett Sollazzo Date 9/26/2022

Approved Rejected

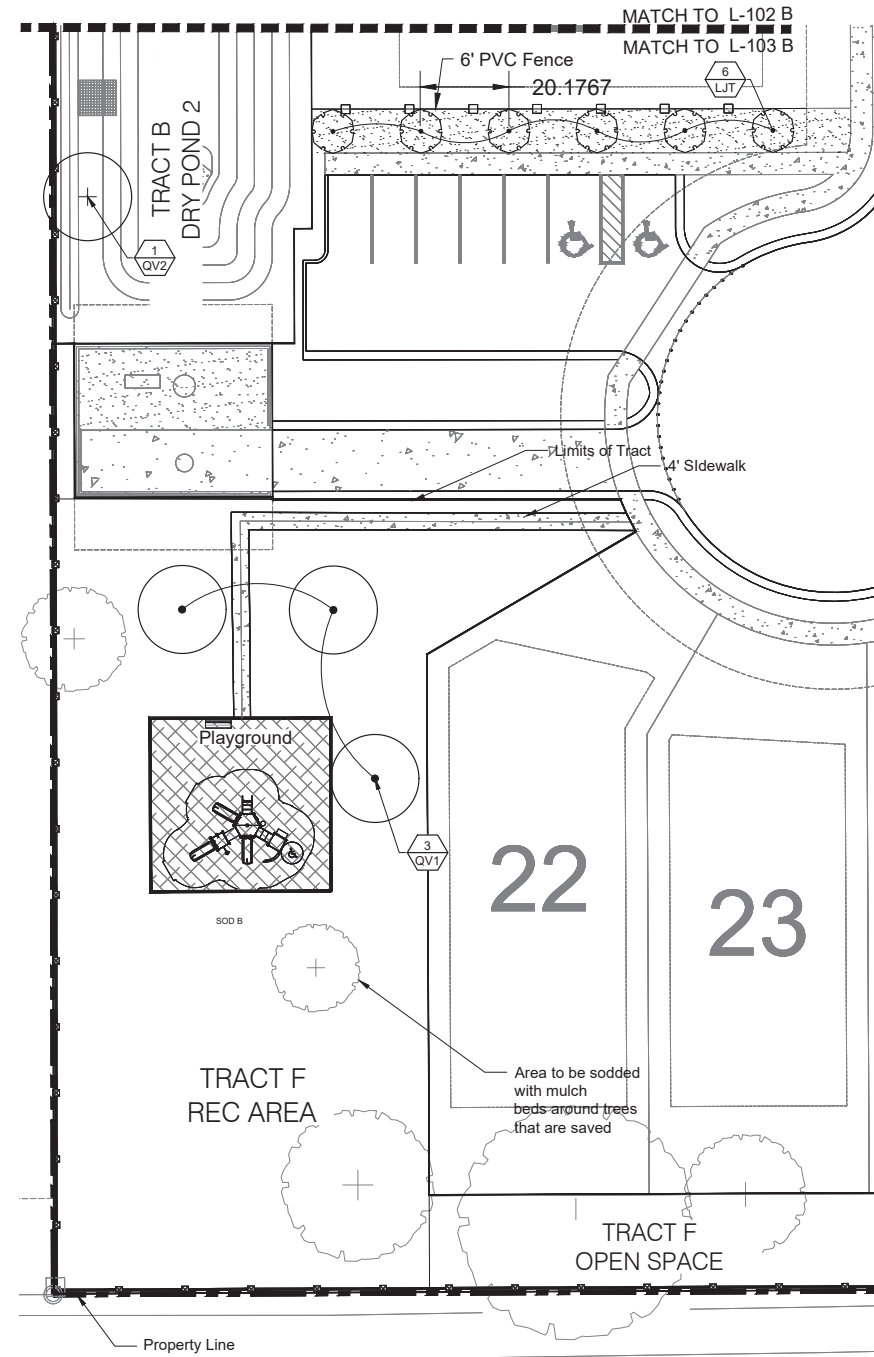
Hold on Certificate of Occupancy?

Yes No



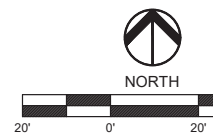
A PLAN VIEW
LANDSCAPE TRACT

SCALE: 1"=20'



B PLAN VIEW
LANDSCAPE TRACT

SCALE: 1"=20'

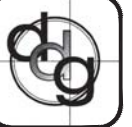


Digitally
signed by
William G Mak
Date:
2022.09.09
#4:35:36
04'00"

daly design group inc.
Land Planning, Landscape Architecture, Project Management, Development Consulting
604 Courtland St., Suite 101, Orlando, FL 32804 (407) 740-7373 www.dalydesign.com

REV	DATE	DESCRIPTION	BY

Tracts E & F Landscape Plans
Landscape Construction Plans
Haven Oaks
Orlando, Florida



PROJECT NO.
1930
SCALE
1"= 20'
DATE
June 2022
SHEET
L-102

CITY OF EDGEWOOD

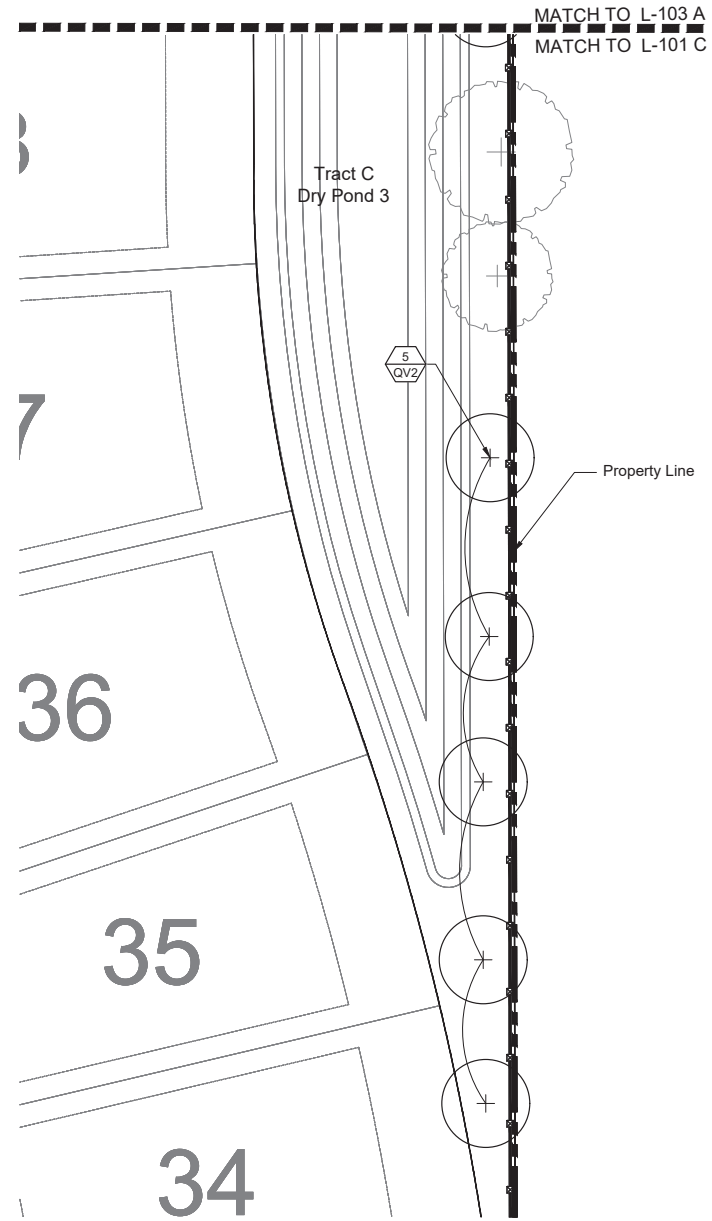
Zoning Plans Review

By Brett Sollazzo Date 9/26/2022

Approved Rejected

Hold on Certificate of Occupancy?

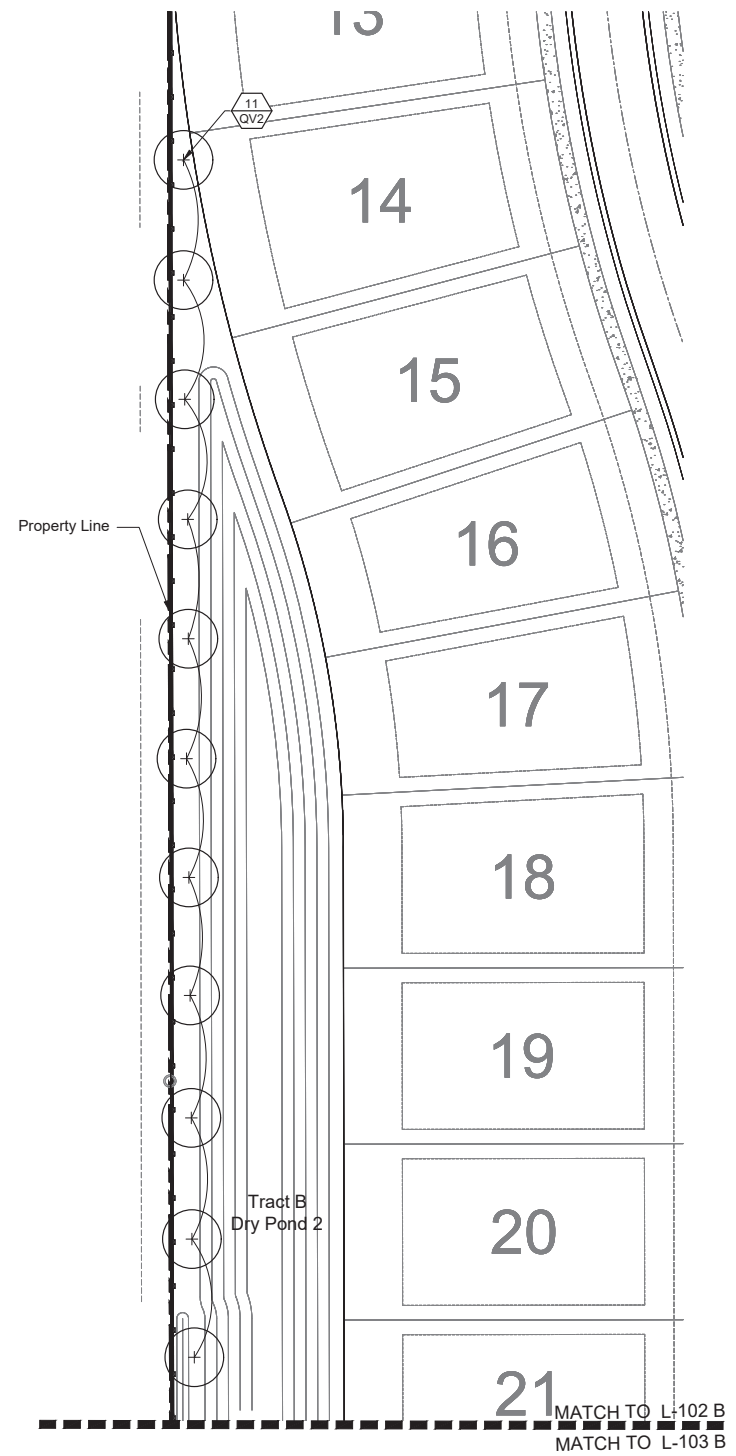
Yes No



PLAN VIEW LANDSCAPE TRACT

A

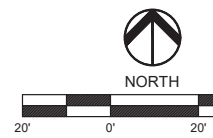
SCALE: 1"=20'



PLAN VIEW LANDSCAPE TRACT

B

SCALE: 1"=30'



Digitally signed by
William G Mark
Date:
2022.09.09
14:35:49
-04'00'

PROJECT NO.
1930
SCALE
1"= 20'
DATE
June 2022
SHEET
L-103

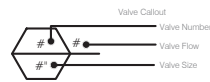
Ponds Landscape Plans
Landscape Construction Plans
Haven Oaks
Orlando, Florida

daly design group inc.
Land Planning, Landscape Architecture, Project Management, Development Consulting
604 Courtland St., Suite 101, Orlando, FL 32804 (407) 740-7373 www.dalydesign.com

REV	DATE	DESCRIPTION	BY

IRRIGATION SCHEDULE

SYMBOL	MANUFACTURER/MODEL/DESCRIPTION	QTY	PSI			
	Rain Bird 1806 (MPR) 15 Strip Series Turf Spray 6.0" Pop-Up Sprinkler with Co-Molded Wiper Seal. Side and Bottom Inlet. 1/2" NPT Female Threaded Inlet.	89	30			
	Rain Bird 1806 (MPR) 5 Series MPR Turf Spray 6.0" Pop-Up Sprinkler with Co-Molded Wiper Seal. Side and Bottom Inlet. 1/2" NPT Female Threaded Inlet.	4	30			
	Rain Bird 1806 (MPR) 8 Series MPR Turf Spray 6.0" Pop-Up Sprinkler with Co-Molded Wiper Seal. Side and Bottom Inlet. 1/2" NPT Female Threaded Inlet.	7	30			
	Rain Bird 1806 (MPR) 10 Series MPR Turf Spray 6.0" Pop-Up Sprinkler with Co-Molded Wiper Seal. Side and Bottom Inlet. 1/2" NPT Female Threaded Inlet.	3	30			
	Rain Bird 1806 (MPR) 15 Series MPR Turf Spray 6.0" Pop-Up Sprinkler with Co-Molded Wiper Seal. Side and Bottom Inlet. 1/2" NPT Female Threaded Inlet.	12	30			
	Rain Bird 1804-1400 Flood Tree Bubbler 1401 Flood Bubbler 4.0" pop-up	107	20			
SYMBOL	MANUFACTURER/MODEL/DESCRIPTION	QTY	PSI	GPM	RADIUS	DETAIL
	Rain Bird 5006-R-NP-PC-FC-MPR Turf Rotor, 6.0" Pop-Up, Plastic Riser, Matched Precipitation Rotor (MPR nozzle), Arc and Radius as per Symbol. 25 ft=red, 30 ft=green, 35ft=beige. With Non-Potable Purple Cover. Pressure Regulating.	88	35		24'	
	Rain Bird 5006-R-NP-PC-FC-MPR Turf Rotor, 6.0" Pop-Up, Plastic Riser, Matched Precipitation Rotor (MPR nozzle), Arc and Radius as per Symbol. 25 ft=red, 30 ft=green, 35ft=beige. With Non-Potable Purple Cover. Pressure Regulating.	11	35		30'	
	Rain Bird 5006-R-NP-PC-FC-MPR Turf Rotor, 6.0" Pop-Up, Plastic Riser, Matched Precipitation Rotor (MPR nozzle), Arc and Radius as per Symbol. 25 ft=red, 30 ft=green, 35ft=beige. With Non-Potable Purple Cover. Pressure Regulating.	27	35		34'	
SYMBOL	MANUFACTURER/MODEL/DESCRIPTION	QTY				
	Area to Receive Dripline					
	Rain Bird XFCV-06-18 XFCV On-Surface Landscape Dripline with a Heavy-Duty 3.5 psi Check Valve. 0.6 GPH emitters at 18" O.C. Dripline laterals spaced at 18" apart, with emitters offset for triangular pattern. Great for elevation change. Specify XF insert fittings.	2,892 s.f.				
SYMBOL	MANUFACTURER/MODEL/DESCRIPTION	QTY				
	Rain Bird PESBR 1", 1-1/2", and 2" Durable Chlorine-Resistant Valves for Reclaimed Water Applications. With Scrubber Mechanism Technology, and Purple Flow Control Handle.	20				
	Rain Bird PESBR-PRS-D (2) 1", 1-1/2", and 2" Durable Chlorine-Resistant Valves for Reclaimed Water Applications. With Scrubber Mechanism Technology, Purple Flow Control Handle, and Pressure Regulator Module.	11				
	Hunter XCH-0600-SS with Solar Panel Electromechanical controller, 6 stations, outdoor model, battery-powered. Stainless Steel Cabinet. For residential/commercial use. Compatible with Solar Panel Kit	1				
	Rain Bird ESPLXME2 w/ (2) ESPLXMSM12 36 Station, Traditionally-Wired, Commercial Controller. (1) ESPLXME2 12-Station, Indoor/Outdoor, Plastic Wall-Mount Enclosure w/ (2) ESPLXMSM12 - 12-Station Expansion Modules.	1				
	Rain Bird RSD-BEx Rain Sensor, with metal latching bracket, extension wire.	2				
	Water Meter 1" 1" Reclaim Water Meter	1				
	Water Meter 5/8" 5/8" Reclaim Water Meter	1				
	Irrigation Lateral Line: PVC Class 200 SDR 21	7,786 l.f.				
	Irrigation Mainline: PVC Class 200 SDR 21	1,697 l.f.				



**CITY OF EDGEWOOD
Zoning Plans Review**

By Brett Sollazzo Date 9/26/2022

Approved Rejected

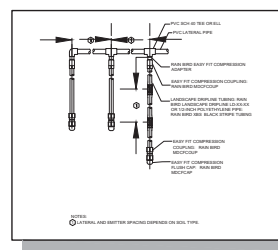
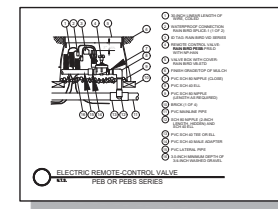
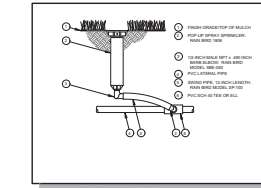
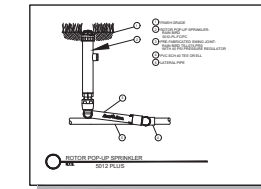
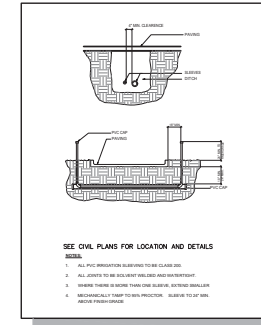
Hold on Certificate of Occupancy?

Yes No

WATERING SCHEDULE

NUMBER	MODEL	TYPE	PRECIP	IN/WEEK	MIN./WEEK	GAL./WEEK	GAL./DAY
1	Rain Bird PESBR	Turf Rotor	0.56 in/h	1	108	2,242	1,121
2	Rain Bird PESBR-PRS-D (2)	Area for Dripline	0.43 in/h	0.85	120	692.4	346.2
3	Rain Bird PESBR	Turf Rotor	0.58 in/h	1	104	2,159	1,080
4	Rain Bird PESBR	Turf Spray	1.82 in/h	1	33	659.0	329.5
5	Rain Bird PESBR-PRS-D (2)	Bubbler	3.4 in/h	0.85	15	255	127.5
6	Rain Bird PESBR	Turf Rotor	0.62 in/h	1	97	1,759	879.3
7	Rain Bird PESBR-PRS-D (2)	Area for Dripline	0.43 in/h	0.85	120	535.2	267.6
8	Rain Bird PESBR-PRS-D (2)	Bubbler	3.4 in/h	0.85	15	225	112.5
9	Rain Bird PESBR	Turf Spray	1.69 in/h	1	36	624.6	312.3
10	Rain Bird PESBR	Turf Rotor	0.57 in/h	1	106	2,149	1,074
11	Rain Bird PESBR-PRS-D (2)	Bubbler	3.4 in/h	0.85	15	300	150
12	Rain Bird PESBR	Turf Spray	1.77 in/h	1	34	679.0	339.5
13	Rain Bird PESBR	Turf Rotor	0.57 in/h	1	106	2,204	1,102
14	Rain Bird PESBR	Turf Rotor	0.52 in/h	1	115	2,284	1,142
15	Rain Bird PESBR	Turf Rotor	0.6 in/h	1	100	2,001	1,001
16	Rain Bird PESBR	Turf Rotor	0.62 in/h	1	97	1,570	785.2
17	Rain Bird PESBR	Turf Rotor	0.62 in/h	1	97	1,892	946.8
18	Rain Bird PESBR	Turf Rotor	0.58 in/h	1	105	1,761	880.4
19	Rain Bird PESBR	Turf Rotor	0.64 in/h	1	94	1,801	900.5
20	Rain Bird PESBR-PRS-D (2)	Bubbler	3.4 in/h	0.85	15	45	22.5
21	Rain Bird PESBR	Turf Spray	1.66 in/h	1	37	718.2	359.1
22	Rain Bird PESBR	Turf Rotor	0.59 in/h	1	102	1,985	992.5
23	Rain Bird PESBR	Turf Spray	0.7 in/h	1	86	1,722	860.9
24	Rain Bird PESBR	Turf Rotor	0.67 in/h	1	90	1,697	848.3
25	Rain Bird PESBR	Turf Rotor	0.82 in/h	1	73	1,124	562.1
26	Rain Bird PESBR-PRS-D (2)	Bubbler	3.4 in/h	0.85	15	165	82.5
27	Rain Bird PESBR	Turf Rotor	0.54 in/h	1	112	2,256	1,128
28	Rain Bird PESBR-PRS-D (2)	Bubbler	3.4 in/h	0.85	15	45	22.5
29	Rain Bird PESBR-PRS-D (2)	Bubbler	3.4 in/h	0.85	15	270	135
30	Rain Bird PESBR-PRS-D (2)	Bubbler	3.4 in/h	0.85	15	150	75
31	Rain Bird PESBR-PRS-D (2)	Bubbler	3.4 in/h	0.85	15	150	75
		TOTALS:			2,107	36,117	18,059

DETAILS



IRRIGATION SYSTEM PERFORMANCE NOTES

- IRRIGATION SYSTEM AS SHOWN IS DESIGNED TO OPERATE OFF A RECLAIM WATER SOURCE WITH A PROVIDING A MINIMUM PSI OF 45 AT THE SOURCE
- HEAD LAYOUT BASED ON BASE INFORMATION PROVIDED. HEADS SHALL BE ADJUSTED TO ACCOMMODATE FIELD VARIATIONS WHILE MAINTAINING 100% COVERAGE AND MINIMIZING OVER SPRAY ONTO PAVED AREAS AND BUILDINGS.
- LATERAL PIPE SHALL BE SIZED SO THAT WATER VELOCITY DOES NOT EXCEED 5 FEET PER SECOND. MAXIMUM GPM PER PIPE SIZE AS FOLLOWS:

3/4" PIPE	8 GPM
1" PIPE	14 GPM
1 1/4" PIPE	24 GPM
1 1/2" PIPE	36 GPM
2" PIPE	50 GPM
2 1/2" PIPE	80 GPM
3" PIPE	120 GPM
4" PIPE	200 GPM
6" PIPE	450 GPM

NOTE:

- LAND FIX IRRIGATION WAS UTILIZED TO DESIGN THE IRRIGATION SYSTEM.
- MAINLINE, LATERAL PIPE & CONTROL VALVES SHOWN IN HARDSCAPE/BUILDINGS AREA'S OR OUTSIDE OF PROPERTY LINES IS FOR CLARITY ONLY. INSTALL PIPE AND EQUIPMENT IN GREEN SPACE AND WITHIN PROPERTY LINES.

GENERAL NOTES

- REFER TO THE LANDSCAPE PLANS WHEN TRENCHING TO AVOID TREE AND SHRUB LOCATIONS.
- ALL MAINLINE PIPING SHALL BE BURIED TO A MINIMUM DEPTH OF 18" OF COVER AND ALL LATERAL PIPING SHALL BE BURIED TO A MINIMUM DEPTH OF 12" OF COVER.
- ALL POP-UP ROTOR AND SPRAY HEADS SHALL BE INSTALLED USING AN 18" PVC FLEX PIPE CONNECTION. CONTRACTOR SHALL NOT USE FUNNY PIPE.
- PIPE SIZES SHALL CONFORM TO THOSE SHOWN ON THE DRAWINGS, THE SMALLEST LATERAL, PIPE SIZE TO A SINGLE SPRAY OR ROTOR HEAD SHALL BE 3/4".
- ALL RISERS SHALL BE STAKED WITH A 1" METAL DOWEL AND SECURED WITH UV RESISTANT PLASTIC CABLE TIES. RISERS AND DOWEL SHALL BE PAINTED FLAT BLACK.
- ALL REMOTE CONTROL VALVES, GATE VALVES AND QUICK COUPLERS SHALL BE INSTALLED IN VALVE BOXES.
- THE EXACT HEIGHT OF ANY 12" POP-UP THAT IS SHOWN IN THE SHRUB BED SHALL BE DETERMINED BY THE LANDSCAPE ARCHITECT IN A FIELD.
- CONTROL WIRE SHALL BE 14-1 UF DIRECT BURIAL COLORED RED FOR CONTROL WIRES AND WHITE FOR COMMON WIRE. NO CROSS CONNECTION BETWEEN CONTROLLERS SHALL BE ALLOWED. WIRE SPLICES SHALL BE MADE ONLY IN VALVE BOXES USING RAINBIRD "SNAP-TITE" CONNECTORS.
- ANY PIPING OR VALVES SHOWN OUTSIDE THE PROPERTY LINE OR OUTSIDE OF A LANDSCAPE AREA IN SHOWN THERE FOR DESIGN CLARITY ONLY. ALL PIPING AND VALVES SHALL BE INSTALLED ON THE PROPERTY AND WITHIN LANDSCAPE AREAS.
- IT IS THE RESPONSIBILITY OF THE IRRIGATION CONTRACTOR TO FAMILIARIZE HIMSELF WITH, AND EXERCISE CARE SO AS TO NOT DAMAGE ANY EXISTING BERMS, WALLS, STRUCTURES, PLANT MATERIALS AND UTILITIES. THE IRRIGATION CONTRACTOR SHALL BE RESPONSIBLE FOR THE IMMEDIATE REPAIR OR REPLACEMENT OF ALL ITEMS DAMAGE BY HIS WORK. HE SHALL COORDINATE HIS WORK WITH OTHER CONTRACTORS FOR THE LOCATION AND INSTALLATION OF SLEEVES AND PIPING THROUGH WALLS, UNDER ROADWAYS AND PAVING, ETC.
- DO NOT WILLFULLY INSTALL THE SPRINKLER SYSTEM AS SHOWN ON THE DRAWINGS WHEN IT IS OBVIOUS IN THE FIELD THAT UNKNOWN OBSTRUCTIONS, GRADE DIFFERENCES OR DIFFERENCES IN ARE DIMENSIONS EXIST THAT MIGHT NOT HAVE BEEN CONSIDERED IN THE ENGINEERING. SUCH OBSTRUCTIONS OR DIFFERENCES SHOULD BE BROUGHT TO THE ATTENTION OF THE OWNER'S AUTHORIZED REPRESENTATIVE. IN THE EVENT THIS NOTIFICATIONS IS NOT PERFORMED, THE IRRIGATION CONTRACTOR SHALL ASSUME FULL RESPONSIBILITY FOR ANY REVISIONS.
- FINAL LOCATION OF THE AUTOMATIC CONTROLLER(S) SHALL BE APPROVED BY THE OWNER'S AUTHORIZED REPRESENTATIVE PRIOR TO INSTALLATION.
- ELECTRICAL SERVICE TO ALL EQUIPMENT SHALL BE PROVIDED TO A JUNCTION BOX AT THE EQUIPMENT LOCATION, (BY OTHERS, NOT A PART OF THIS CONTRACT) THE IRRIGATION CONTRACTOR SHALL BE RESPONSIBLE FOR THE FINAL CONNECTION FROM THE JUNCTION BOX TO ALL EQUIPMENT.
- THE IRRIGATION CONTRACTOR SHALL FLUSH AND ADJUST ALL SPRINKLER HEADS AND VALVES TO PROVIDE OPTIMUM COVERAGE WITH MINIMAL OVERSPRAY ONTO WALKS, STREETS, WALLS, ETC. IN ORDER TO ACCOMPLISH THIS, THE CONTRACTOR MAY SUBSTITUTE VARIABLE ARC NOZZLES IN PLACE OF THE SPECIFIED FIXED ARC NOZZLES WHERE NECESSARY. PRESSURE COMPENSATING SCREENS MAY ALSO BE USED TO REDUCE SPRAY DISTANCE.
- THE CONTRACTOR SHALL COMPLETE ALL WORK IN ACCORDANCE WITH ALL PREVAILING LAWS, CODES AND REGULATIONS.
- ALL SPRINKLER EQUIPMENT NOT OTHERWISE DETAILED OR SPECIFIED SHALL BE INSTALLED AS PER MANUFACTURER'S RECOMMENDATIONS AND SPECIFICATIONS.
- THE CONTRACTOR SHALL PREPARE AN AS-BUILT DRAWING SHOWING ALL IRRIGATION INSTALLATION. A COPY OF THE ORIGINAL PLAN MAY BE OBTAINED FROM THE LANDSCAPE ARCHITECT FOR A FEE. THE AS-BUILT DRAWING SHALL LOCATE ALL MAINLINE AND VALVES BY SHOWING EXACT MEASUREMENTS FROM HARD SURFACES.
- ALL WORK SHALL BE GUARANTEED FOR ONE YEAR FROM THE DATE OF FINAL ACCEPTANCE AGAINST ALL DEFECTS IN EQUIPMENT AND WORKMANSHIP.
- SLEEVES SHALL BE PLACE UNDER PAVEMENT AS SHOWN ON PLANS AND SHALL BE A MINIMUM OF 2X THE SIZE OF THE IRRIGATION PIPE.
- CONTRACTOR SHALL PERFORM PRESSURE AND VOLUME TEST ON IRRIGATION WATER SOURCE OVER A CONTINUOUS 24 HOUR PERIOD PRIOR TO THE COMMENCEMENT OF ANY CONSTRUCTION WORK, SHOULD THE AVAILABLE SUPPLY NOT BE ADEQUATE TO MEET THE DEMANDS OF THE IRRIGATION SYSTEM AS DESIGNED THE CONTRACTOR SHALL CONTACT THE LANDSCAPE ARCHITECT PRIOR TO CONSTRUCTION FOR DESIGN MODIFICATIONS.
- ALL IRRIGATION PIPES, SPRINKLER CAPS AND VALVE BOX COVERS SHALL BE PURPLE TO DENOTE REUSE WATER. CONTRACTOR TO PROVIDE SIGNAGE AT ALL PROJECT ENTRANCES DENOTING REUSE IRRIGATION WATER. SEE CIVIL PLAN FOR LOCATION AND DETAIL.

daly design group inc.
Land Planning, Landscape Architecture, Project Management, Development Consulting
604 Courtland St., Suite 101, Orlando, FL 32804 (407) 740-7373 www.dalydesign.com

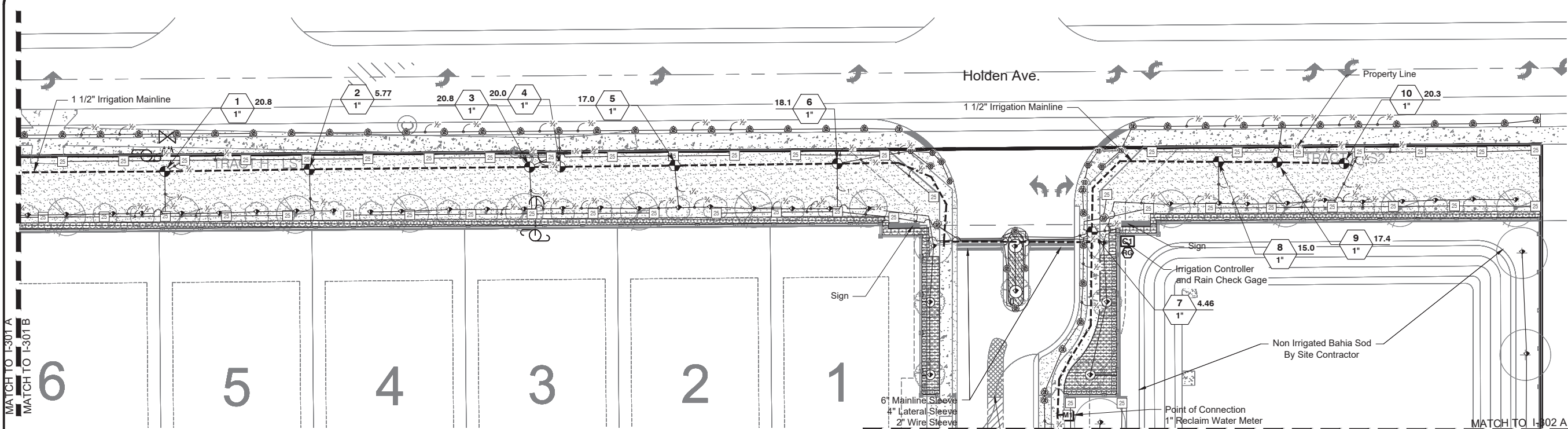
REV	DATE	DESCRIPTION
10	05.17.2022	Revision by City Comments

Irrigation Schedule & Details
Irrigation Plan
Haven Oaks
Orlando, Florida

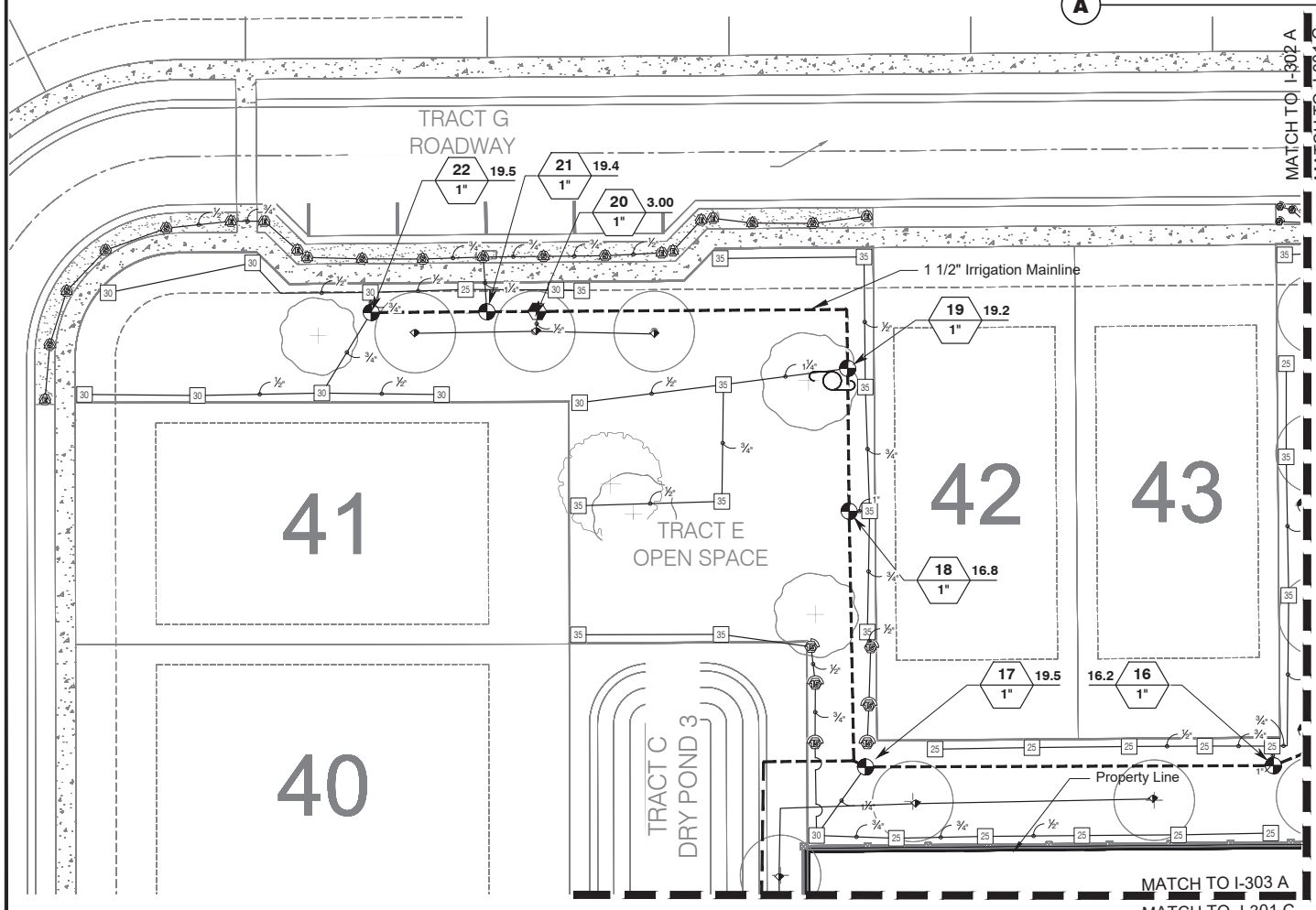


Digitally signed by William G. Maki
Date: 2022.09.09 14:36:03 -0400

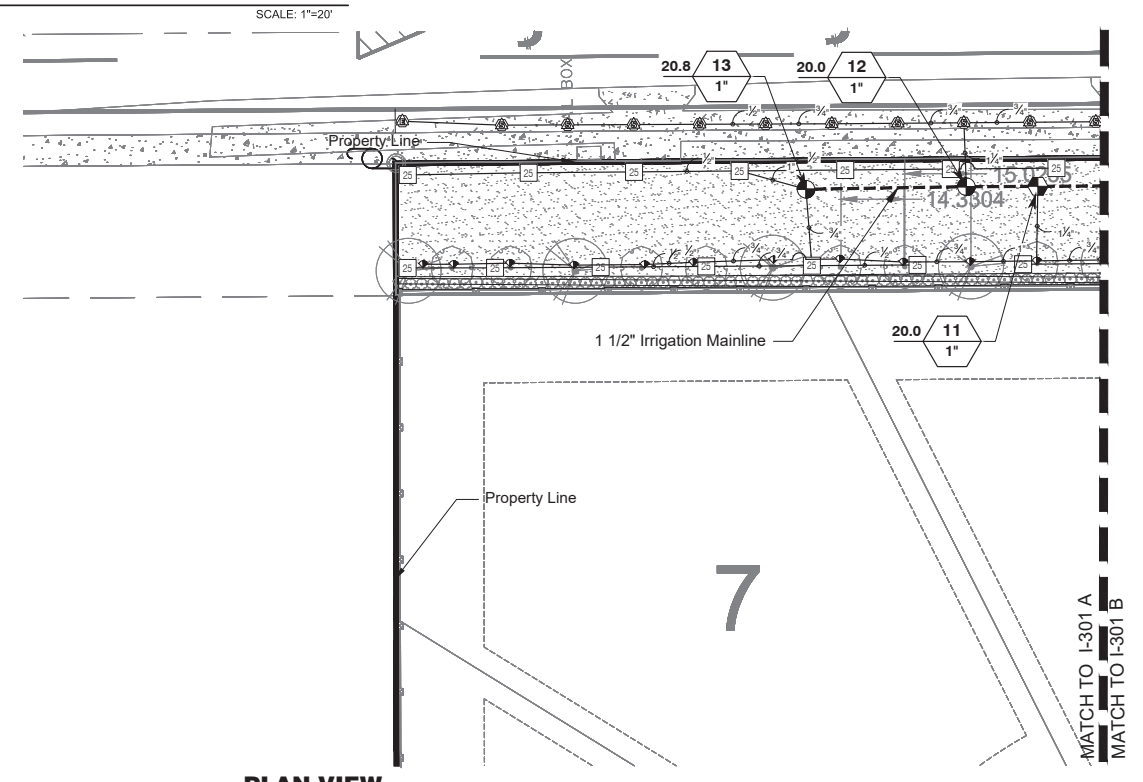
PROJECT NO. 1930
SCALE nts
DATE: June 2022
SHEET I-001



**PLAN VIEW
LANDSCAPE TRACT**
SCALE: 1"=20'

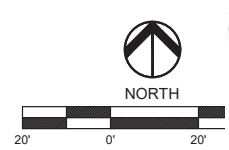


**PLAN VIEW
TRACT D RECREATION**
SCALE: 1"=20'



**PLAN VIEW
TRACT D**
SCALE: 1"=20'

CITY OF EDGEWOOD
Zoning Plans Review
By Brett Sollazzo Date 9/26/2022
Approved Rejected
Hold on Certificate of Occupancy?
Yes No



Digitally signed
by William G. Maki
Date: 2022.09.09
14:36:19 -04'00'

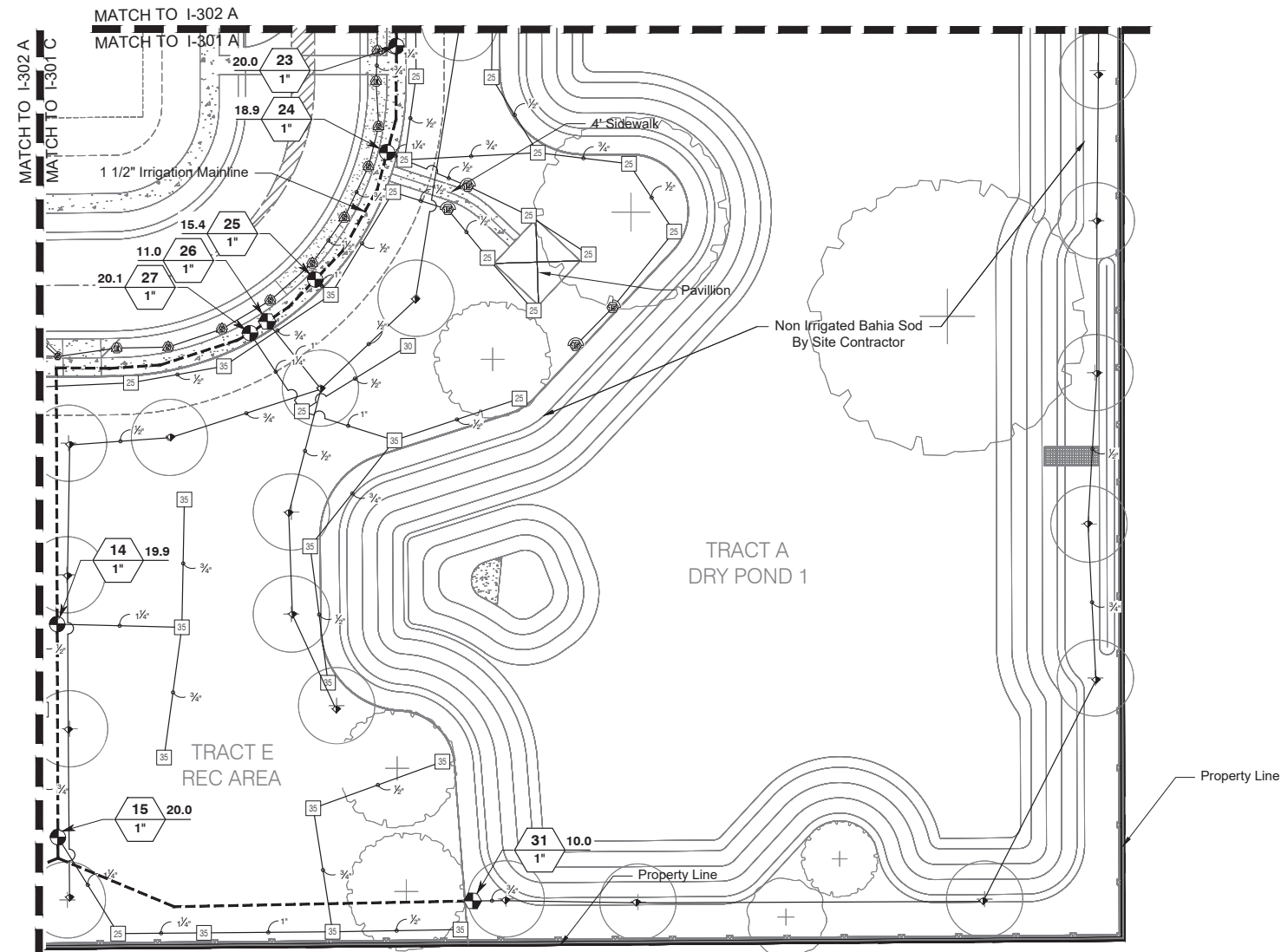
daly design group inc.
Land Planning, Landscape Architecture, Project Management, Development Consulting
604 Courtland St., Suite 101, Orlando, FL 32804 (407) 740-7373 www.dalydesign.com

REV	DATE	DESCRIPTION	BY
10	05.17.2022	Revision by City Comments	GH

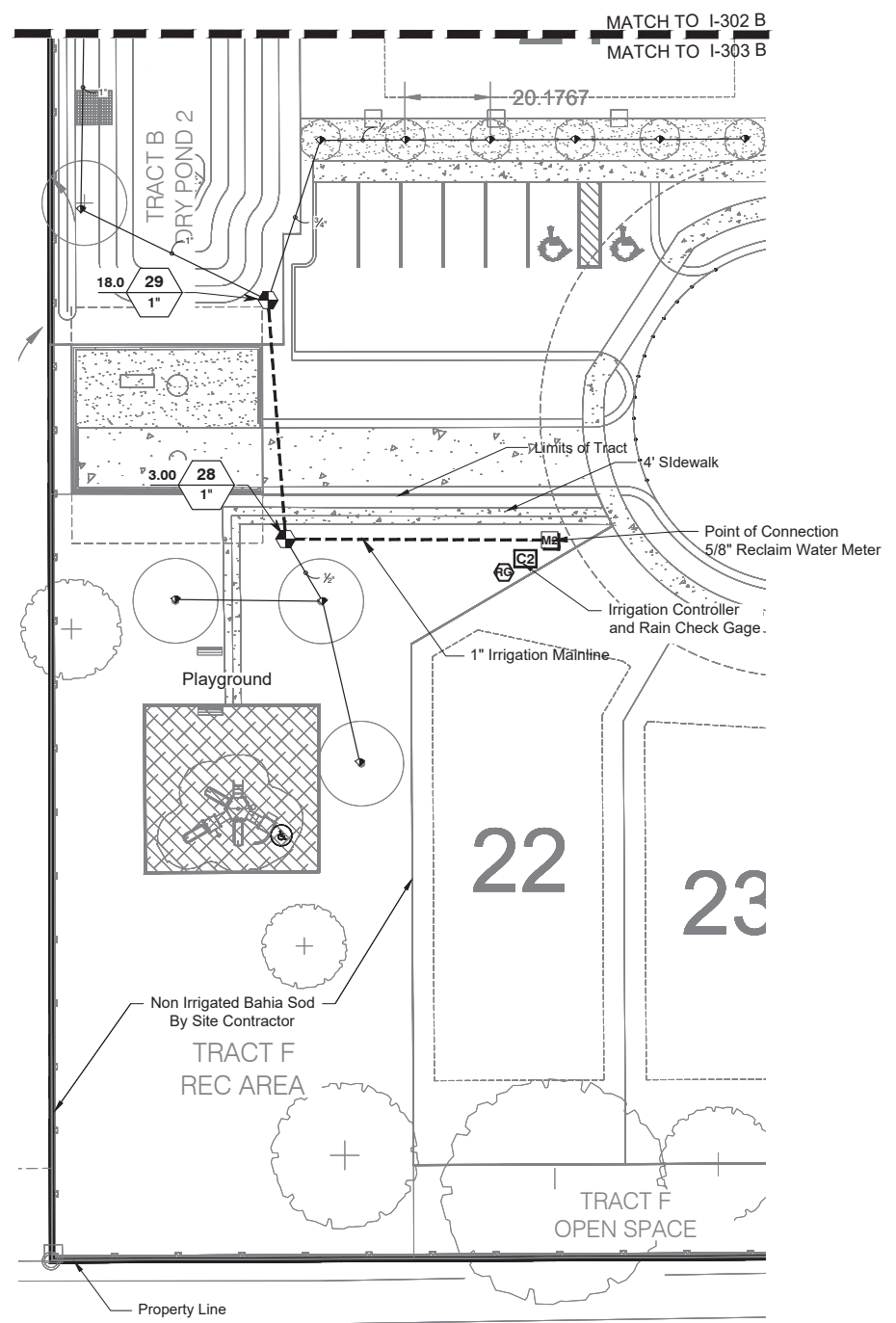
Irrigation Entrance Tract E & Tract D
Irrigation Plan
Haven Oaks
Orlando, Florida



PROJECT NO.
1930
SCALE
1"= 20'
DATE
June 2022
SHEET
I-301



A PLAN VIEW LANDSCAPE TRACT
SCALE: 1"=20'



B PLAN VIEW LANDSCAPE TRACT
SCALE: 1"=20'

CITY OF EDGEWOOD
Zoning Plans Review
 By Brett Sollazzo Date 9/26/2022
 Approved Rejected
 Hold on Certificate of Occupancy?
 Yes No

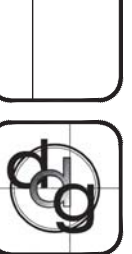
North arrow and scale bar (0, 20, 20').

Digitally signed by William G. Mark...
 Date: 2022.09.09 14:36:37 -04'00'

daly design group inc.
 Land Planning, Landscape Architecture, Project Management, Development Consulting
 604 Courtland St., Suite 101, Orlando, FL 32804 (407) 740-7373 www.dalydesign.com

REV	DATE	DESCRIPTION	BY
10	05.17.2022	Revision by City Comments	GH

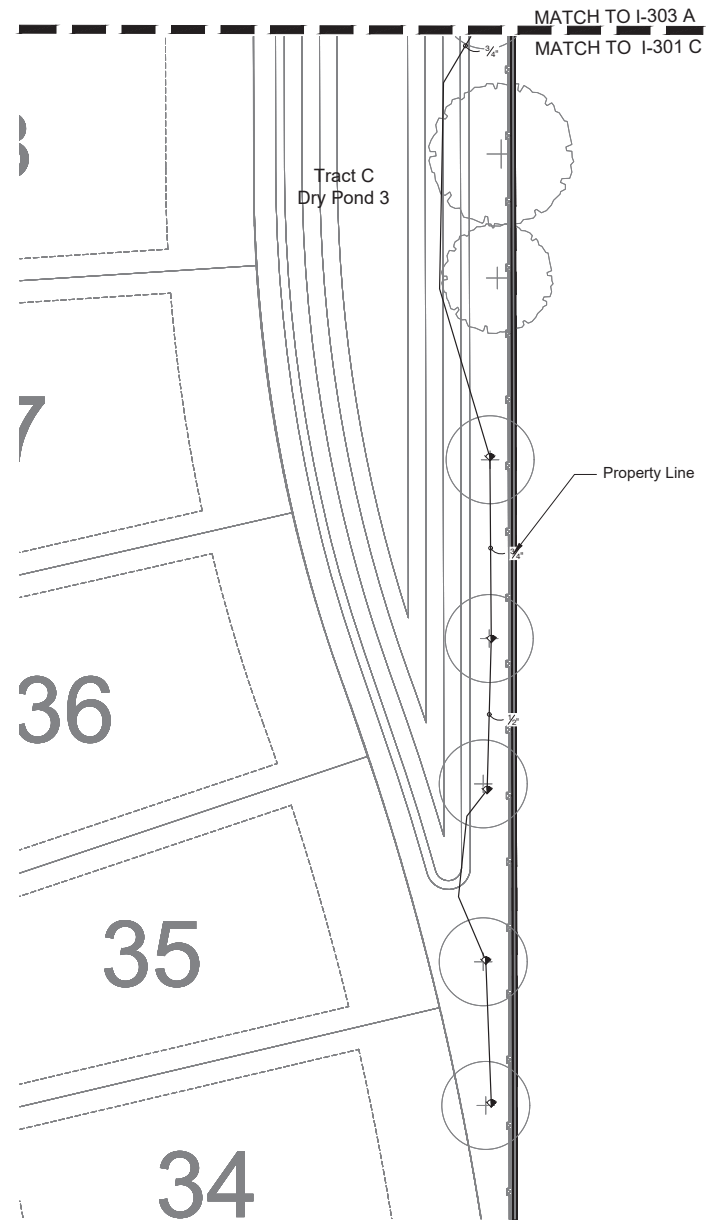
Tracts E & F Irrigation Plans
 Irrigation Plan
 Haven Oaks
 Orlando, Florida



PROJECT NO. 1930
 SCALE 1"= 20'
 DATE June 2022
 SHEET I-302

CITY OF EDGEWOOD
Zoning Plans Review

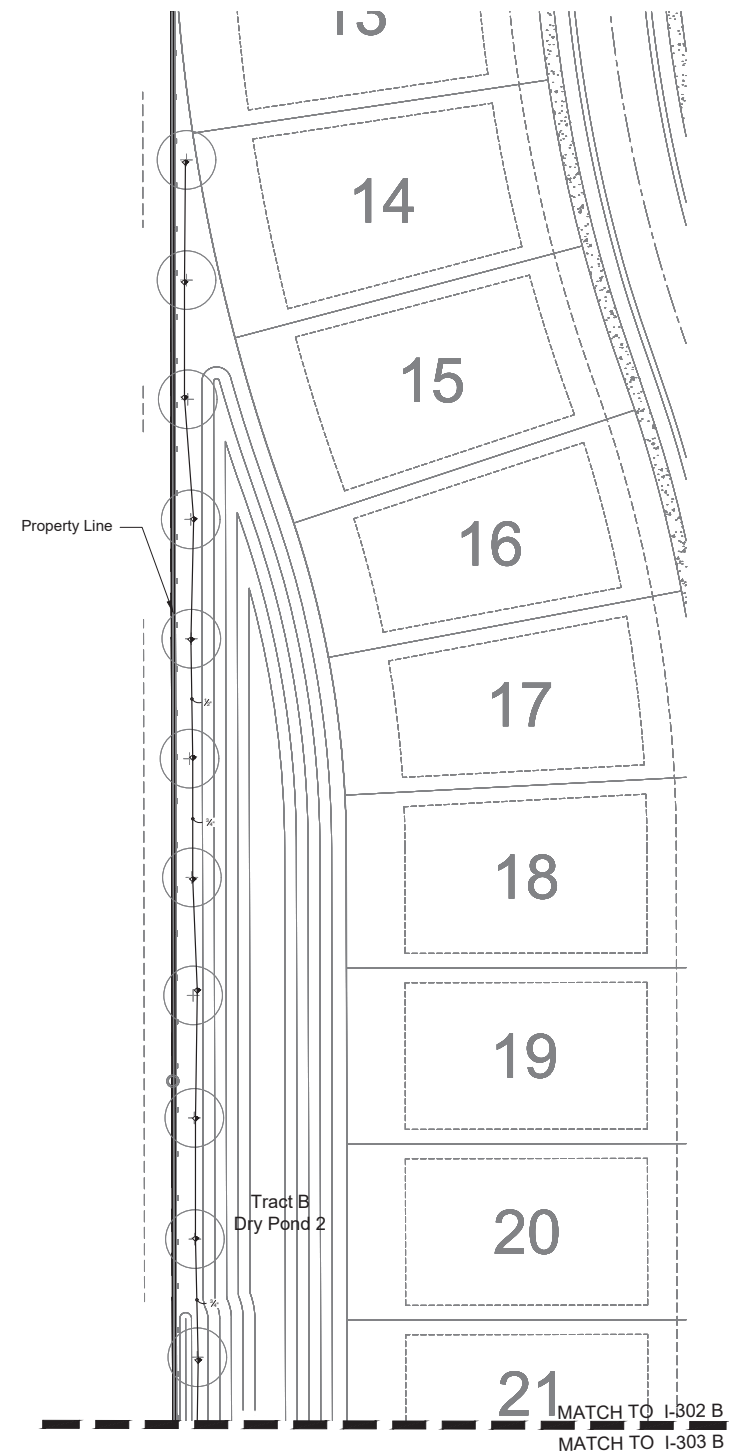
By Brett Sollazzo Date 9/26/2022
 Approved Rejected _____
 Hold on Certificate of Occupancy?
 Yes No _____



**PLAN VIEW
 LANDSCAPE TRACT**

A

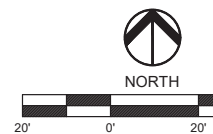
SCALE: 1"=20'



**PLAN VIEW
 LANDSCAPE TRACT**

B

SCALE: 1"=30'

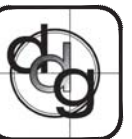


Digitally signed by
William G Maki
 Date: **2022.09.09**
 14:36:54
 0400'

daly design group inc.
 Land Planning, Landscape Architecture, Project Management, Development Consulting
 604 Courtland St., Suite 101, Orlando, FL 32804 (407) 740-7373 www.dalydesign.com

REV	DATE	DESCRIPTION	BY
10	05.17.2022	Revision by City Comments	GH

Ponds Landscape Plans
 Development Plan/Preliminary Subdivision Plan
Haven Oaks
 Orlando, Florida



PROJECT NO.
1930
 SCALE
1"= 20'
 DATE
June 2022
 SHEET
I-103