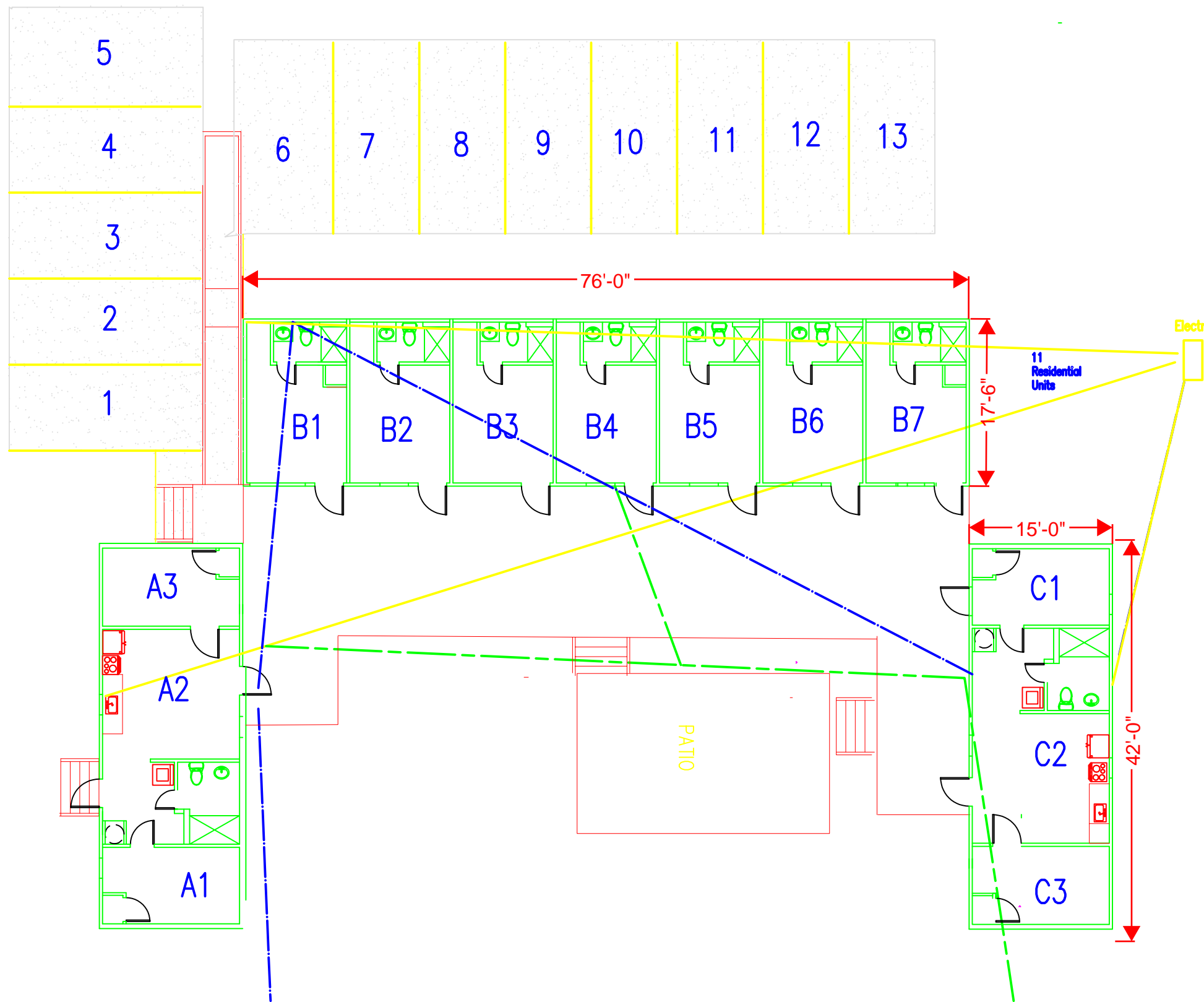


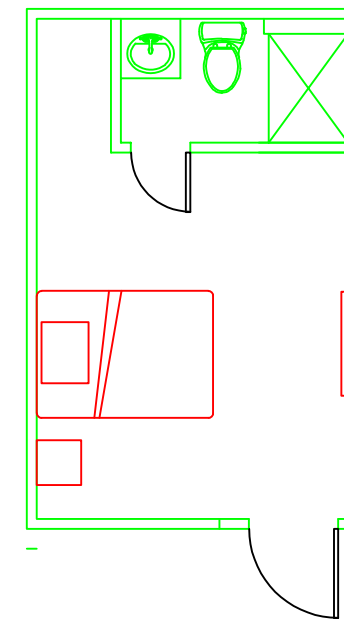
- Building A - 630 sf with 2 Temporary Housing units
Building B - 1,330 sf with 7 Temporary Housing units
Building C - 630 sf with 2 Temporary Housing units
- 2,590 sf



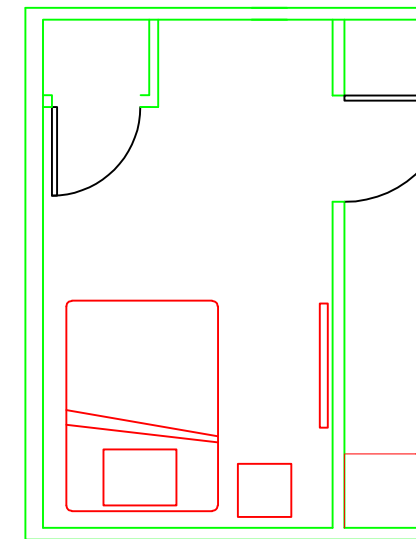
SITE PLAN

SCALE: 1/16" = 1'-0" 11"x17" SHEET

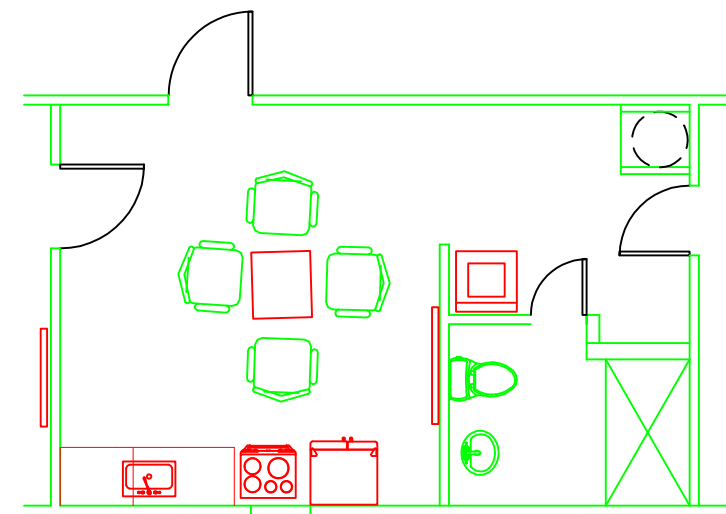
PROJECT



Typical B Unit

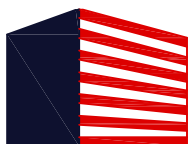


Typical A&C Unit



Common Area

SCALE: 3/16" = 1'-0" 11"x17" SHEET



CoreCivic

PROJECT: EDEN TLF

CRA PROJ. NO.: -

REVISION: PICKUP

SUPPLEMENT TO DRAWING NO.: -

DRAWN: -

SCALE: -

FIELD VERIFY ALL DIMENSIONS

DATE: 10/04/2022

SKETCH NO.

-

An aerial photograph of the Eden Correctional Institution. The facility consists of several large, tan-colored buildings with multiple windows, arranged in a complex layout. There are several white, cylindrical storage tanks scattered throughout the grounds. A large, open dirt area is visible in the upper right. The institution is bordered by a road on the right, which is labeled "US Highway 87 E". The text "Eden Correctional Institution" is overlaid in white on the lower left portion of the image.

Eden Correctional
Institution

US Highway 87 E