



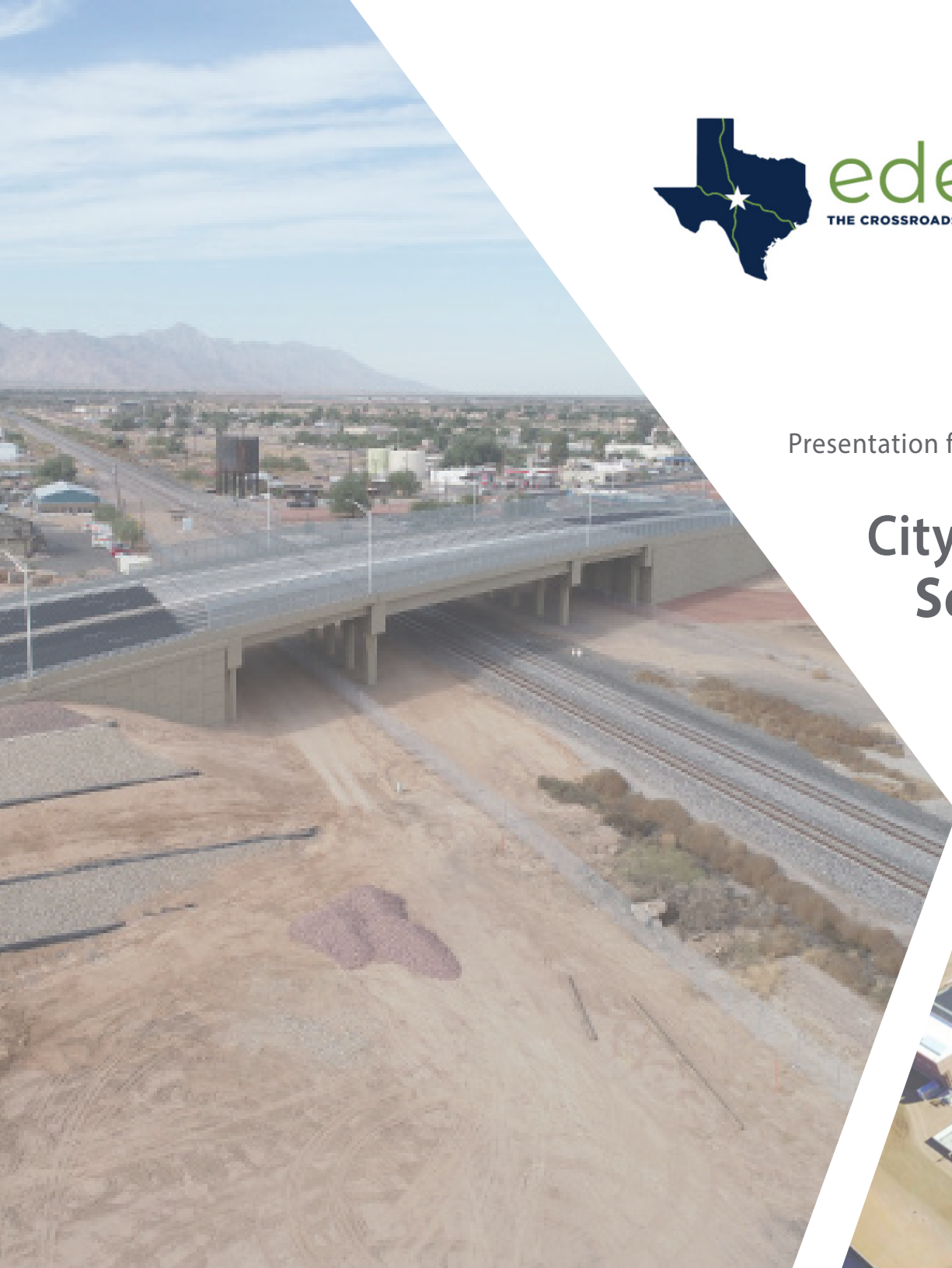
9500 Ray White Road, Suite 200
Fort Worth, TX 76244 • 469.726.4055

Presentation for

City of Eden – Engineering Services

“The strength of a large firm, in your community”

November 14, 2023



A. Firm Information and Experience

As a top 5 Arizona firm, the EPS Group team represents some of the best talent in the industry and in their respective disciplines. Headquartered in Mesa, Arizona and founded in 2003, EPS Group is the state’s largest locally-owned engineering firm in the State of Arizona. EPS Group’s local contact, Ryan McKinnis, is a regional representative based out of a remote office in San Angelo and will be exclusively dedicated to this contract. When you select EPS Group, you unlock the capacity of a large firm that provides local, community-centric solutions.

As a privately-owned business, EPS Group is not encumbered by large corporate policies and out-of-state management. EPS Group is known for its nimble nature in responding to any type of request with short advance notice. Our broad discipline base means limited reliance on consultants, allowing us to provide an accelerated start-up.

a. Primary Line of Business

With a staff of 300, EPS Group’s strength lies in the ability to provide our clients extensive, experienced, in-house experts.

We offer Leander Independent School District outstanding professional resources. Our 41 registered civil engineers are supported by dozens of EITs, drafters, and designers. Additional EPS Group services include a survey department with 10 Arizona registered land surveyors, more than 80 support staff, and 25 fully equipped survey vehicles; a planning and landscape architecture group (nine registered landscape architects); and construction management.



b. Office Location

EPS Group has four Arizona offices, one office in Colorado, and one office in Texas. While EPS has been offering services in Texas since 2021, our Texas office, located in Fort Worth, opened in 2022.

- **Fort Worth**
9500 Ray White Rd, #239,
Fort Worth, TX 76244
Texas Office of the Secretary of the State
#804301753

c. Structure of Firm

EPS Group is a privately owned and operated corporation, formed in Arizona on June 5, 2003. The company is in “Good Standing” with the Texas Secretary of the State. The company is privately owned and governed by a Board of Directors comprised of the CEO, CFO, and seven Principals.

Firm Principals	Years of Experience
Dan “Ox” Auxier, PE	21 years
Greg Froehlich, PE	26 years
Greg Hahn, CPII	37 years
Bruce Hallsted, PE	24 years
Anthony Herrera, PE	24 years
Hank Jansen, LSIT	23 years
Robert Johnston, RLS	31 years
Bryan Kitchen, PE	22 years
Todd Leslie, CPD	29 years
Brian Nicholls, PE	14 years
Matt Truitt, PE, CFM	18 years
Joel Saurey, PE	25 years
Jeff Stine, PE	29 years
Brandon Squire, PE	28 years
Eric Winters, PE	21 years

Local Talent



Ryan McKinnis, PE

Texas Project Manager

Over the past 12 years, Ryan has worked with a wide variety of municipalities and agencies to provide professional and detailed public works engineering in a broad range of engineering disciplines including Civil Design, Transportation, Water and Wastewater, and Utility engineering. Detail oriented and customer focused, Ryan is dedicated to providing safe, efficient, and intelligent designs to meet the needs of the public, both now and into the future. As a former Assistant Director of Engineering, Ryan understands the processes and challenges municipalities face when developing projects to meet the concerns of the it's Citizens and City Council.

EDUCATION

Bachelor of Science,
Engineering,
Oregon State University

REGISTRATION

Registered Professional
Engineer (civil),
Texas # 128191;
also registered in, Arizona,
Washington, and Oregon

TIME WITH EPS GROUP

2 years

TOTAL EXPERIENCE

12 years

RESIDENCE

San Angelo, TX

SELECT EXPERIENCE

- **Houston Galveston Area Council | Pearland Mobility Study: FM518, Main Street (SH35) to East City Limit | Pearland, TX**
Project Manager, Project Engineer. EPS Group was selected as part of the team to evaluate the future transportation needs for the City of Pearland along the FM518 corridor from Main Street to the East City Limit. The City applied for and received traffic study funding from the State of Texas to be administered through the HGAC's Metro Planning model. The project consists of analyzing the model outputs to develop potential roadway projects to meet the City's future traffic needs and includes developing alternatives as well as holding public meetings to gather public input. Projects will be evaluated and incorporated into the City's Long-Range Transportation Plan.
- **City of Mesa | Red Mountain Shared-Use Path: Loop 202, Power Road to N. City Limit | Mesa, AZ**
Project Engineer. Selected from the City of Mesa's Transportation Engineering on-call, EPS Group is completing the Red Mountain SUP – a 15 ft. wide asphalt path running approximately 2 miles from the Valley Metro Park and Ride, north along the east side of Power Road to the City boundary. EPS Group provides civil engineering, survey, and landscape architecture services.
- **Arizona Department of Transportation | SR95 Median Improvements: S. Palo Verde to Industrial, N. Palo Verde to Price | Lake Havasu, AZ**
Project Engineer. EPS Group was selected based on past performance to provide the design of raised medians along the SR 95 corridor in Lake Havasu City. This project was awarded Traffic Safety Funds based on the number of crashes within the corridor and will consist of retrofitting the existing roadway cross-section to include a 3' to 14' raised median. The project will include the analysis of existing intersections and access points, as well as coordination with local businesses.
- **Matrix Equities | SR238 Roadway Improvements: SR95, Loma Rd to N. Roosevelt Ave | Maricopa, AZ**
Project Engineer. EPS Group was selected to provide the design for the temporary roadway improvements to SR238 necessary to support the construction of an adjacent multi-use development. The design included the analysis of the existing facilities to be expanded to include a new right turn deceleration lane, adjustment of the East and West bound through lanes, and re-striping of the pavement.
- **City of Mesa | Signal Butte Water Treatment Plant Update | Mesa, AZ**
Project Engineer. EPS Group was selected as part of the team for the design of site-wide updates to the existing Signal Butte Water Treatment plan to provide additional production capacity. EPS provide sitewide pavement design, drainage design, and designed a new sewer connection to the site along Queen Creek Rd to the south of the facility.



epsgruoinc.com

9500 Ray White Road, Suite 200 • Fort Worth, TX 76244 • 469.726.4055

Specialized Experience

Prior to joining EPS, Ryan spent over 12 years working in Municipal, County and State Government, including 6 years serving Texas Communities in such roles as Assistant Director of Engineering, Assistant City Engineer, Traffic Operations Manager, and Addressing Coordinator.

City Development Services

In several of these roles Ryan served as the City's technical representative for City Council meetings, Planning and Zoning Commission meetings and regional council of government technical committee meetings.



As an "On-Call Engineer" Ryan is there to meet your needs:

Development Services

- Plan Review :

Review Residential, Commercial, and Industrial development plans to meet City standards and best management Practices.

- City Development Standards :

Create and revise City design standards to ensure projects within the City meet or exceed state and national standards.

- Regional Project Representative :

Act as the City's technical representative for County, State and Federal projects to protect the interests of the City and keep the City informed.

City Government

- City Ordinance Review :

Review and revise City Ordinance language to improve transparency, protect the City and it's Citizens, and enforce City standards.

- City Engineer Letters :

Provide written technical expertise when required to meet regulatory compliance, provide expert testimony, or engineering related legal correspondence.

Capital Program Services

- City Infrastructure Inventory :

Help develop and create an itemized inventory of City infrastructure, including determining existing conditions, expected life, and replacement costs

- Capital Project Inventory :

Create a list of required Capital projects based on infrastructure inventory and create a prioritized list of projects based on Fiscal Year

General Firm Experience

EPS Group was originally founded in 2003 to provide professional consulting services to public and private clients throughout Arizona. Now, the firm serves the American Southwest with additional offices in Colorado and Texas. EPS Group has a talented staff of 300, including Registered Professional Engineers, Registered Land Surveyors, and Registered Landscape Architects.

Our Services

EPS Group's strength is the ability to provide our clients extensive, experienced in-house resources – a valuable asset for on-call contracts. We also have outstanding relationships with subconsultants who have committed to assist our team, as needed, in such areas as environmental services, geotechnical, structural and electrical engineering, potholing, and public outreach.

We offer high quality service for multiple disciplines, with a focus on general design, transportation and traffic, grading and drainage, utility, and planning projects. In support of our design efforts, we use the latest in engineering software. We are well-versed in AutoCAD Civil 3D, along with other modeling software such as MicroStation, InRoads, StormCAD, WaterCAD, SewerCAD, FLO-2D, and ArcGIS.

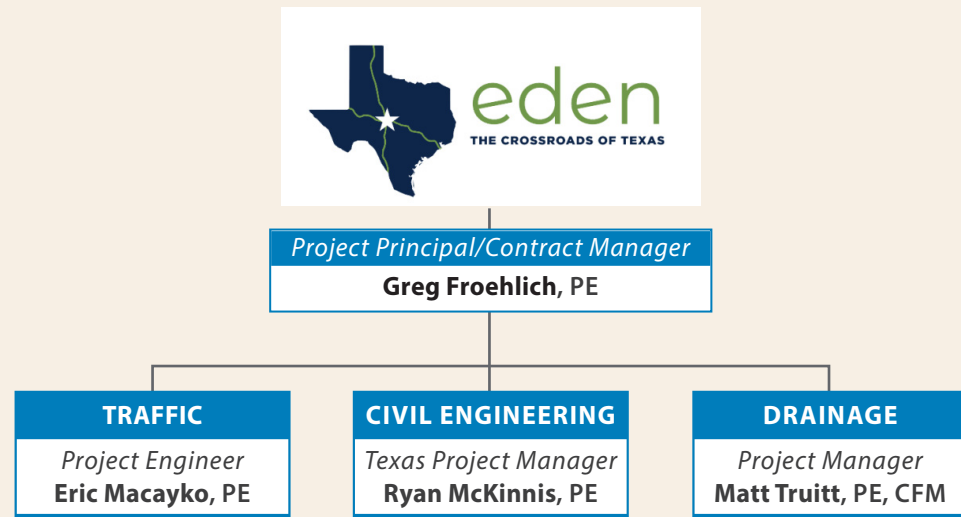
The City of Eden can trust that EPS Group will be ready for any assignment.

To demonstrate, during the past five years EPS has been selected by a variety of city, county, and state agencies for numerous engineering and surveying contracts. The following are some of our recent on-call contracts (39 total to date):

- Arizona Department of Administration (ADOA) Civil Engineering On-Call
- Arizona Department of Transportation On-Calls: On-Call Project Development, Multimodal Planning, Right of Way Plans and Survey
- City of Apache Junction Public Works On-Call

- City of Chandler Civil Engineering & Survey On-Call Consultant Lists
- City of El Mirage Engineering On-Call
- Town of Gilbert Pre-Qualified Registrants List
- City of Glendale Surveying & Landscape Architecture Services On-Calls
- City of Goodyear On-Call Plan Review Services
- City of Mesa Transportation Design Services On-Call
- City of Mesa Landscape Architecture On-Call
- City of Tempe Survey On-Call
- City of Tolleson On-Call Surveying Services
- Maricopa County Department of Transportation (MCDOT) Civil Engineering & Survey On-Calls Town of Queen Creek On-Call Professional Services: Roadway Improvement; Traffic Engineering; and Stormwater Management
- Roosevelt Water Conservation District (RWCD) On-Call Engineering and Review Services
- Salt River Pima-Maricopa Indian Community Engineering On-Call
- Southwest Gas Corporation, Southern Arizona On-Call Civil Engineering Consulting Services & On-Call Natural Gas Design Services

4. Organizational Chart



Quality of Projects – Schedules, Deadlines, and Scope of Services

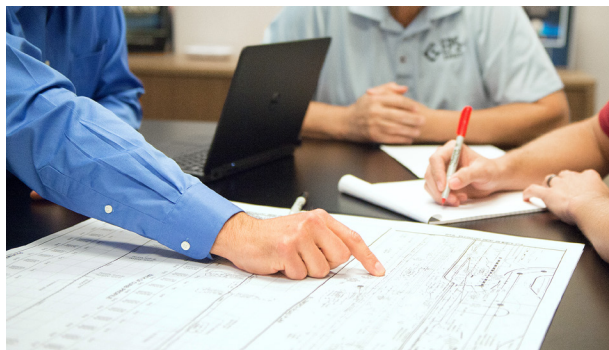
EPS Group's strength is the ability to provide our clients extensive, experienced resources. The City can trust that EPS Group will be ready for any assignment under this contract.

We understand the needs of today's cities including roadway improvements (e.g., pavement, signing and striping, grading, drainage, ADA compliant sidewalks, traffic signals, etc.), transportation alternative projects (bike, pedestrian, safe routes to school, etc.), and Water and Wastewater Projects. Other tasks may include alignment studies/DCRs, environmental studies/clearances and legal descriptions, etc. EPS Group has provided design services for each of these potential tasks to numerous clients, and will be an asset to the City for this on-call contract.

EPS Group can offer the following tasks when delivering typical on-call services:

- Public Works General Engineering
- Public Works Professional Street Rehabilitation and Reconstruction Design Services
- Public Works Highway and/or Bridge Design and Engineering Services
- Public Works Professional Water Utility Design Services
- Public Works Professional Wastewater Utility Design Services

- Public works Traffic Engineering Services



- Public Works Parks Planning

Providing Personnel for Specific Tasks

We have listed discipline experts in the Organization Chart shown on page 1. Each of these individuals has extensive experience in their respective field, including the management of municipal on-call projects. **Having such qualified staff in each service category gives us the ability to respond to multiple tasks in a proactive fashion.**

Once assigned a task, EPS Group's Project/Contract Manager, Greg Froehlich, will build each task design team around the specific project needs. Assigned staff will be experts in the relevant fields, with skill sets tailored to the project requirements. This approach ensures that only the best, most applicable personnel are assigned to your projects.

How Our Expertise Benefits the City

Meeting your quality, schedule, and budget demands is not just a goal to us, it is a requirement. EPS Group has a long history of achieving successful project completion through a combination of effective project management and technical expertise. **Repeat clients make up 90 percent of our workload.** With that much hanging on client satisfaction, we do whatever it takes.

An example of our expertise: utility conflicts, which could occur during project design and seriously impact both budget and schedule. EPS Group prides itself in developing a plan to identify existing utilities early in the design process, determine any conflicts, and develop pro-active solutions to avoid these impacts. .

Our approach to achieving client satisfaction and satisfying the requirements of the project's scope of work is to meet schedules and budgets, practice effective communication, proactively coordinate with stakeholders, and collaboratively adapt to changes.

EXAMPLE

Chosen for its stellar track record, EPS Group spearheads the SR 95 Median Improvements to perform a corridor enhancement in Lake Havasu City, Arizona. Awarded Traffic Safety Funds based on historical crash data, the project entails retrofitting the cross-section with a 3' to 14' raised median. EPS Group's nationwide team ensures **prompt, top-notch delivery, coordinating seamlessly with local businesses and optimizing intersections.** This upgrade isn't just a project; it's a transformative feature for Lake Havasu City, powered by EPS Group's excellence.

6. Quality of Similar Projects

Similar Projects

Houston Galveston Area Council – Pearland Mobility Study: FM518, Main Street (SH35) to East City Limit *Pearland, TX*

EPS Group was selected as part of the team to evaluate the future transportation needs for the City of Pearland along the FM518 corridor from Main Street to the East City Limit. The City applied for and received traffic study funding from the State of Texas to be administered through the HGAC’s Metro Planning model. The project consists of analyzing the model outputs to develop potential roadway projects to meet the City’s future traffic needs and includes developing alternatives as well as holding public meetings to gather public input. Projects will be evaluated and incorporated into the City’s Long-Range Transportation Plan.

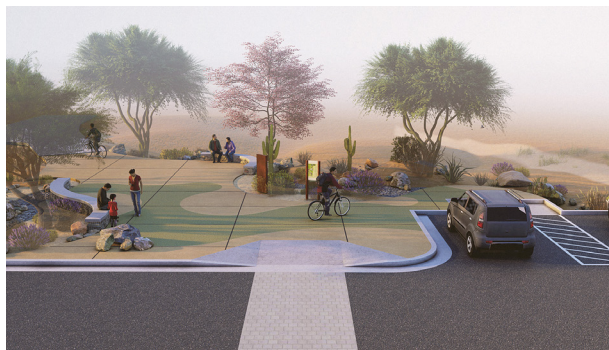
PROJECT OWNER / CLIENT Rajendra Shrestha, Director of Public Works and Engineering – City of Pearland | rshrestha@pearlandtx.gov | 281.652.1637

PROJECT ROLE EPS Group was Subconsultant

ROLE OF KEY TEAM MEMBERS

Ryan McKinnis – Project Manager/Project Engineer, 90%; Eric Maceyko – Traffic Engineer, 10%

SERVICE DATES Start 07/2023, End 07/2024 (estimated)



RED MOUNTAIN SHARED USE PATH

City of Mesa – Red Mountain Shared-Use Path: Loop 202, Power Road to N. City Limit *Mesa, AZ*

Selected from the City of Mesa’s Transportation Engineering on-call, EPS Group is completing the Red Mountain SUP – a 15 ft. wide asphalt path running approximately two miles from the Valley Metro Park and Ride, north along the east side of Power Road to the City boundary. EPS Group is providing civil engineering, survey, and landscape architecture services.

PROJECT OWNER / CLIENT

Jose Quintana, Project Manager – City of Mesa | jose.quintana@mesaaz.gov | 480.644.4533

PROJECT ROLE EPS Group is Prime

ROLE OF KEY TEAM MEMBERS

Matt Truitt – Project Manager, 20%; Eric Maceyko – Traffic Engineer, 5%; Ryan McKinnis – Project Engineer, 40%

SERVICE DATES Start 02/2022, End 12/2023 (estimated)

ADOT – SR95 Median Improvements: S. Palo Verde to Industrial, N. Palo Verde to Price *Lake Havasu, AZ*

EPS Group was selected based on past performance to provide the design of raised medians along the SR 95 corridor in Lake Havasu City. This project was awarded Traffic Safety Funds based on the number of crashes within the corridor and will consist of retrofitting the existing roadway cross-section to include a 3’ to 14’ raised median. The project will include the analysis of existing intersections and access points, as well as coordination with local businesses.

PROJECT OWNER / CLIENT

Chris Moore, Project Manager – Arizona Department of Transportation | cmoore3@azdot.gov | 757.469.6679

PROJECT ROLE EPS Group is Prime

ROLE OF KEY TEAM MEMBERS

Ryan McKinnis – Project Engineer, 70%; Greg Froehlich – Project Manger, 30%

SERVICE DATES Start 08/2023, End 08/2024 (estimated)

City of Mesa – Signal Butte Water Treatment Plant Update *Mesa, AZ*

EPS Group was selected as part of the team for the design of site-wide updates to the existing Signal Butte Water Treatment plan to provide additional production capacity. EPS group provided sitewide pavement design, drainage design, and designed a new sewer connection to the site along Queen Creek Road to the south of the facility.

PROJECT OWNER/CLIENT

Michael McBrady, Project Manager – City of Mesa | 480.644.2251

PROJECT ROLE EPS Group was a Subconsultant

ROLE OF KEY TEAM MEMBERS

Ryan McKinnis – Project Engineer, 50%; Matt Truitt – Drainage Engineer, 20%

SERVICE DATES Start 02/2022, End 06/2023



SIGNAL BUTTE WATER TREATMENT PLANT



SR238 ROADWAY IMPROVEMENTS

Matrix Equities – SR238 Roadway Improvements: SR95, Loma Road to N. Roosevelt Avenue *Maricopa, AZ*

EPS Group was selected to provide the design for the temporary roadway improvements to SR238 necessary to support the construction of an adjacent multi-use development. The design included the analysis of the existing facilities to be expanded to include a new right turn deceleration lane, adjustment of the East and West bound through lanes, and re-stripping of the pavement.

PROJECT OWNER / CLIENT
 Ron Smith, PE, President – Matrix Equities | ron@matrix-equities.com | 480.945.9292

PROJECT ROLE EPS Group was Prime

ROLE OF KEY TEAM MEMBERS
 Ryan McKinnis – Project Engineer, 70%

SERVICE DATES Start 09/2022, End 06/2023

MCDOT – Southern Avenue: 51st Avenue to 37th Lane *Phoenix, AZ*

MCDOT selected EPS Group for this arterial design project that reconstructs 1.9 miles of Southern Avenue to increase capacity, improve traffic safety, and provide multimodal transportation along the road. The design includes raised medians, bus bays, bike lanes (with new green-painted

buffers), and a new HAWK signal. Numerous SRP 69kV and 12kV facilities and SRP irrigation laterals require relocation. EPS Group engineered multiple ways to avoid 69kV poles behind curb returns while maintaining ADA requirements, saving the client over \$300k. Extensive utility coordination is also required for the installation of 1.5 miles of new storm drains. County island parcels are along the corridor, requiring right-of-way acquisition. This project is designed to City of Phoenix standards, as the City will be annexing this road in the future.

PROJECT OWNER/CLIENT
 Shonnell Gibbs, Project Manager– Maricopa Co. Dept. of Transportation | Shonnell.Gibbs@maricopa.gov | 602.506.8647

PROJECT ROLE EPS Group is Prime

ROLE OF KEY TEAM MEMBERS
 Greg Froehlich – Project Manager, 50%; Ryan McKinnis – Engineer, 10%

SERVICE DATES Start 05/2020, End 01/2024 (estimated)

Arizona Department of Administration (ADOA) – Alamo Lake State Park *La Paz County, AZ*

ADOA selected EPS Group to evaluate and design the existing campground facilities located at Camps A, B and C of the Alamo Lake Campground in Western Arizona. The project included renovation of an existing bathroom and shower facility including updating to meet all ADA parking and access requirements, design of new dump station facilities, and replacement of aging septic and potable water facilities.

PROJECT OWNER/CLIENT
 Britt Olachea, Senior Project Manager – ADOA | brittolachea@azdoa.gov | 480.503.2250

PROJECT ROLE EPS Group was Prime

ROLE OF KEY TEAM MEMBERS
 Ryan McKinnis – Project Engineer, 70%

SERVICE DATES Start 08/2022, End 12/2023 (estimated)

Town of Gilbert – Civic Center Parking Lot Improvements *Gilbert, AZ*

EPS Group provided civil design support for upgrades to the Municipal I Building. The firm worked collaboratively with Town engineers, the construction manager, and contractor to develop engineering solutions, in real time, on this rapidly evolving construction project. Tasks included a new parking lot design to improve drainage within the constraints of the existing curb and gutter while mitigating impacts to existing utilities. The team helped develop an electrical concept for a future EV charging station, lot signing and striping, and improved ADA accessibility to the building.

PROJECT OWNER / CLIENT
 Jack Gierak – CIP Project Supervisor | jack.gierak@gilbertaz.gov | 480.503.6176

PROJECT ROLE EPS Group was Prime

ROLE OF KEY TEAM MEMBERS
 Matt Truitt – Project Manager, 40%; Ryan McKinnis – Project Engineer, 50%

SERVICE DATES Start 09/2022, End 05/2023

Town of Gilbert – Greenfield Road and Ocotillo Road, Traffic Analysis *Gilbert, AZ*

As part of EPS Group’s Ocotillo Road: 148th Street to Greenfield project, EPS Group conducted a traffic operations analysis for the Greenfield Road intersection to assist the planned design in accommodating future anticipated traffic volume. In order to evaluate anticipated future traffic, a miniature regional traffic model was chosen to provide the most accurate results.

PROJECT OWNER / CLIENT
 Casey Ambrose – Sr. Project Manager | 480.503.6177

PROJECT ROLE EPS Group was Prime

ROLE OF KEY TEAM MEMBERS
 Matt Truitt – Project Manager, 40%; Eric Maceyko – Traffic Engineer, 35%

SERVICE DATES Start 6/2022, End 08/2023

Maricopa County Department of Transportation – Broadway Rd. SDR: 75th to 51st Ave. Phoenix, AZ

These 3 miles of Broadway Road cross the South Mtn. Freeway (SR 202) and run parallel to the future SR 30 freeway. MCDOT desired to know the segment’s impacts from the construction of both the SR 202 and future SR 30. EPS Group developed a Scoping and Design Report (SDR) with 30% plans, which included a traffic analysis. SRP 230kV and 69kV powerlines, along with multiple water and sewer lines, paralleled the corridor; efforts were employed to develop roadway designs that avoided conflicts.

PROJECT OWNER / CLIENT

Marcellus Lisotta, Project Manager – MCDOT
marcellus.lisotta@maricopa.gov | 602.506.4109

PROJECT ROLE

EPS Group was Prime

ROLE OF KEY TEAM MEMBERS

Greg Froehlich – Project Engineer, 40%; Eric Maceyko – Traffic Engineer, 20%; Matt Truitt – Technical Lead, 15%

DATES OF SERVICE start 05-2017 | end 06-2019;
verification end 11-2020

BROADWAY RD. SDR: 75TH TO 51ST AVE.



EPS GROUP PROJECTS – SERVICES PROVIDED

	ENGINEERING DESIGN	PROJECT MANAGEMENT	DESIGN & ENGINEERING SERVICES	PAVEMENT DESIGN & REHABILITATION	DRAINAGE DESIGN	STREETScape DESIGN	UTILITY COORDINATION	TRAFFIC ENGINEERING	HIGHWAY DESIGN	HYDRAULIC ENGINEERING	WATER SUPPLY SYSTEM DESIGN	WATER DISTRIBUTION SYSTEM DESIGN	WATER SYSTEM INFRASTRUCTURE REHAB & UPGRADES	REGULATORY COMPLIANCE & PERMITTING	WASTEWATER COLLECTION SYSTEMS DESIGN	WASTEWATER PUMPING & CONVEYANCE DESIGN	WASTEWATER COMPLIANCE & PERMITTING	TRAFFIC IMPACT STUDIES	TRAFFIC SIGNAL DESIGN & OPTIMIZATION	ROADWAY DESIGN & PLANNING	TRAFFIC CALMING & SPEED MANAGEMENT	PARKING STUDIES & DESIGN	PEDESTRIAN & BICYCLE PLANNING	PARK DESIGN & DEVELOPMENT	ACCESSIBILITY & UNIVERSAL DESIGN
Houston Galveston Area Council – Pearland Mobility Study: FM518, Main Street (SH35) to East City Limit	✓		✓					✓													✓	✓		✓	
City of Mesa – Red Mountain Shared-Use Path: Power Road	✓	✓	✓		✓	✓	✓			✓									✓	✓	✓		✓	✓	✓
ADOT – SR95 Median Improvements: S. Palo Verde to Industrial, N. Palo Verde to Price	✓	✓	✓			✓	✓		✓	✓										✓					
Matrix Equities – SR238 Roadway Improvements: SR95, Loma Rd to N. Roosevelt Ave	✓	✓	✓	✓	✓	✓			✓	✓										✓	✓		✓		
City of Mesa – Signal Butte Water Treatment Plant Update	✓	✓	✓		✓					✓	✓	✓	✓			✓									
MCDOT – Southern Avenue: 51st Avenue to 37th Lane	✓	✓	✓	✓	✓	✓			✓	✓										✓	✓		✓		
ADOA – Alamo Lake State Park	✓	✓	✓	✓	✓						✓				✓							✓		✓	✓
Town of Gilbert – Civic Center Parking Lot Improvements	✓	✓	✓	✓	✓					✓												✓		✓	✓
Town of Gilbert – Greenfield Road and Ocotillo Road, Traffic Analysis	✓		✓															✓							
MCDOT – Broadway Rd. SDR 75th to 51st Ave	✓		✓	✓	✓	✓		✓	✓									✓	✓	✓					