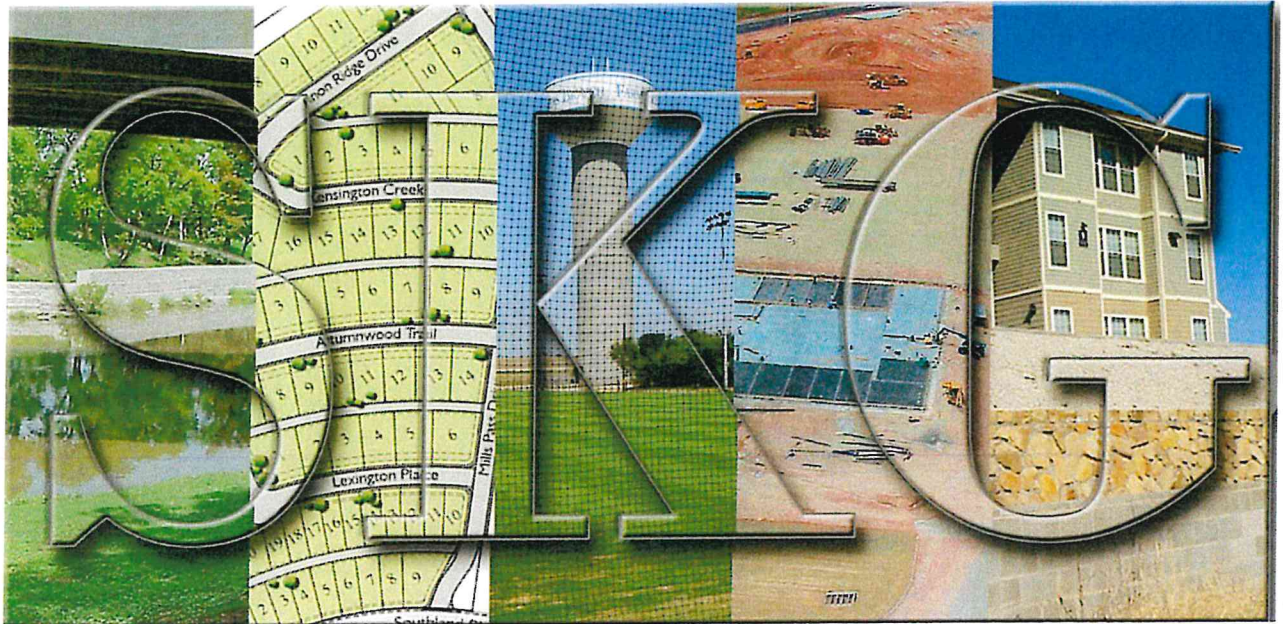


STATEMENT OF QUALIFICATIONS



SKG
ENGINEERING, LLC

FIRM NUMBER F-7608 & 10102400

SURVEYING ♦ ENVIRONMENTAL ♦ LAB/CMT

706 SOUTH ABE STREET
SAN ANGELO, TEXAS 76903

PHONE: 325.655.1288
FAX: 325.657.8189

INTRODUCTION TO SKG ENGINEERING



Engineering is a multi-disciplinary consulting firm that offers a complete package of engineering, surveying, environmental, laboratory, and construction testing services. SKG Engineering is registered with the Texas Board of Professional Engineers (Firm Registration Number F-7608) to offer and perform engineering services in the State of Texas. Also, SKG Engineering is a Texas Licensed Surveying Firm (Registration Number 10102400), legally qualified to offer land surveying services in this State under the laws of Texas governing surveying.

SKG Engineering operates under three divisions: engineering, surveying and laboratory/construction material testing. Engineering projects (including municipal and private), civil and structural design, geotechnical investigations, land development, and environmental studies are managed within the Engineering division. Property surveying, title (mortgage) surveying, and subdivision design services are managed within the Surveying division. Water analysis, soil analysis, bacteria testing, natural gas chromatography, and construction material testing are all managed within the Laboratory/Construction Material Testing division.

SKG Engineering has completed many successful projects throughout Texas for a myriad of individual, industrial, commercial, municipal, and other governmental clients. Our services include civil and structural design, geotechnical investigations, property and design surveying, land development, and construction administration. Environmental consulting, site assessments, floodplain and drainage studies, laboratory testing, and construction material testing services are also some of the services provided by SKG Engineering.

SKG Engineering will provide our clients with innovative engineered solutions with an emphasis on quality, cost and time. Our staff of professionals is dedicated to providing pragmatic, innovative solutions and will uphold the highest professional standards and provide a quality service delivered on schedule and within budget. It is the vision of SKG Engineering to be a recognized leader in civil, structural, geotechnical, and environmental engineering, land surveying, and construction materials testing while upholding the highest standards of professional and ethical behavior, and being prepared to meet the complex technical challenges of the profession and that of our clients.

We would like to introduce you to our staff and to the many services we offer. SKG Engineering employs four Professional Engineers, three drafters, one Registered Professional Land Surveyor, one Survey Manager, two Surveyors-in Training, one Chemist, and various field and office technicians and assistants. We know that you will find SKG Engineering to be a multi-disciplinary firm with the experience, expertise and capability necessary to meet your needs. Best of all, we offer professional and friendly service from a location convenient to all of Texas.



ENGINEERING SERVICES



The Engineering Department at SKG Engineering provides quality work with unbeatable turn around times to accommodate your project schedules. We provide the total package of services to assist you with your project from start to finish. We utilize our survey department to provide property and topographic surveys, and the geotechnical engineers and our laboratory to provide geotechnical investigations and our environmental personnel to provide Environmental Site Assessments. Our civil and structural engineers provide pragmatic, innovative technical solutions for the civil and structural design that the projects require. The Construction Materials Testing Department will carry the project through

completion with testing and inspections. The combined strength of our engineers, field and laboratory technicians, and support personnel makes it possible for us to handle a variety of projects in an efficient and effective manner. SKG Engineering is dually registered with the Texas Board of Professional Engineers to offer and perform engineering services in the State of Texas.

The following is a list and description of several engineering services routinely performed by SKG. Because of our depth of experience, we can accommodate unique engineering requests that may not be described below.

Land Development – SKG Engineering provides design services for commercial, retail, residential, and industrial developments. Our staff is well versed in site layout and planning, zoning and permitting issues, environmental and regulatory guidelines, and drainage, roadway, and utility design. We offer a balanced blend of experience, attention to detail, and sensitivity towards budget and schedule.

Subdivision Planning and Design – We can handle your urban or rural subdivision from the initial planning through construction completion and integrate all of the necessary elements including platting, governmental approvals, environmental review, utility development, facility design and construction supervision.

Geotechnical Studies and Foundation Design – SKG Engineering can conduct various geotechnical tests to determine site conditions, nominal allowable bearing capacity, pavement recommendations, and foundation recommendations. Based upon these studies we can provide a complete civil site development design, foundation design, and structural design.

Structural Inspection and Design – SKG Engineering provides structural inspection services for all types of buildings from residential to large commercial or industrial facilities. We have also provided structural design, building layout and construction supervision for some of the largest structures constructed in West Texas.



ENGINEERING SERVICES



Transportation System Design, Repair and Maintenance – SKG Engineering continues to serve many Texas communities in the development and maintenance of adequate transportation facilities. From property or right-of-way acquisition and new construction, to traffic impact studies, SKG Engineering can provide you with the expertise and expedient service that you require.

Floodplain and Drainage Studies – SKG Engineering has prepared and obtained approval of Conditional Letter of Map Revisions (CLOMR), Letter of Map revisions (LOMR), and Letter of Map Amendments (LOMA) per FEMA's requirements. In addition, we can prepare drainage studies to meet municipal requirements. SKG has completed many flood plain studies and hydrologic modeling projects.

Water Distribution System Design – SKG Engineering offers a total approach to municipal water distribution improvements. Engineering tasks may include system mapping, physical inspection, computer modeling, preliminary design report, construction plans and construction supervision.

Sewage Collection System Design – Our designs of new or expanded sanitary sewer systems begin with comprehensive planning efforts, adequate field and survey work, and are completed by an experienced, construction-oriented design staff.

Wastewater Treatment and Disposal System Design – Changing state design criteria and permitting requirements demand that the consulting firm responsible for these projects maintains a high level of competence and experience. SKG Engineering has successfully completed several major wastewater treatment plant and disposal system projects within recent years including surface water discharge and land irrigation systems.

Street Repair and Paving – SKG Engineering has worked with many West Texas communities in developing long term and short term street improvement projects including seal coat, complete reconstruction, and new construction. Our staff can provide over 30 years of experience to your street and paving project.



ENGINEERING SERVICES



SKG Engineering offers cost effective solutions to a wide range of engineering challenges such as civil, structural, geotechnical and environmental engineering. Quality equipment and facilities, a staff of design professionals, comprehensive planning and management allow us to react to your needs quickly and efficiently. SKG combines solid experience with technical knowledge to meet your design requirements. SKG is committed to client satisfaction regardless of your engineering needs.



The following is a list of some of the engineering projects SKG Engineering has completed.

Schleicher County Hospital District - SKG Engineering performed a topographic survey and geotechnical investigations for a new nursing home, hospital and clinic in Eldorado, Texas. We also provided construction materials testing during the construction phase of this project.

Tom Green County Low Water Crossing Project - SKG Engineering provided surveying and engineering services for a low water crossing project in Tom Green County.

City of Junction - SKG Engineering acted as the Resident Project Representative (RPR) for this project and performed inspections and pay application processing for the water treatment facility in Junction, Texas.



Tom Green County Detention Center - SKG Engineering provided a myriad of services for the Tom Green County Detention Center. The services include a topographic survey, platting services, zone change assistance, Phase I Environmental Site Assessment, geotechnical investigations (preliminary and final), a drainage study, and civil engineering. We also provided construction materials testing during the construction phase.

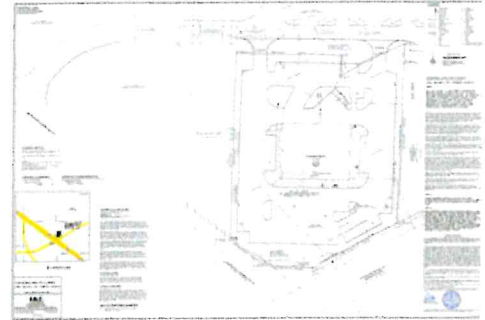


City of Menard - SKG Engineering oversaw the process of amending the City's landfill permit with the TCEQ. This included a geotechnical investigation, groundwater assessment, coordination with local, state, and federal governments, as well as site drainage analyses and civil design.



Sterling County Roadways (2021)- SKG provided plans and specifications for improvements on five (5) county roads, managed the bidding process, and evaluated the construction phase for specification compliance.

SURVEYING SERVICES



The Surveying Department at SKG Engineering performs many services through the use of state of the art survey equipment and computer aided design systems.

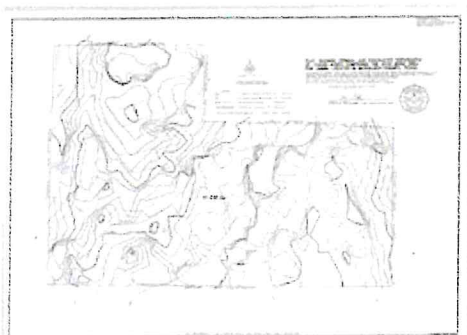
Below is a list of services performed by the Surveying Department at SKG Engineering.

Property and ALTA Land Title Surveys - SKG Engineering operates three full time survey crews and staff within the company specifically dedicated to property and title surveys.

Topographic Surveys - SKG Engineering can gather survey data about the features of the land such as it's elevations and prepare a three-dimensional map. A topographic survey may be needed for future land developments.

Utility Surveys - SKG Engineering can conduct a survey to locate all existing utilities on a property. Utility surveys are needed for new construction, reconstruction, and add lanes projects.

Land Development - The Survey Department at SKG Engineering will assist in land development by providing a topographic survey and locating utilities. SKG Engineering will also coordinate with the City Planning Department to prepare a Final Plat that is in accordance with the City's planning requirements. From there, the Engineering Department will take over and develop a plan and design for street, water, and sewer improvements.



SURVEYING SERVICES & PROJECTS

All of our work is under the direction of a Registered Professional Land Surveyor, and our extensive experience allows us to perform your work in a fast, cost-effective manner. SKG Engineering is a Texas Licensed Surveying Firm legally qualified to offer land surveying services in Texas under the laws governing surveying.

Below is a list of surveying projects performed by SKG Engineering.

City of San Angelo Hickory Aquifer Well Field Mains project

SKG Engineering established the construction right-of-way, PI's, appurtenance locations, and provided construction staking. This included establishing and verifying horizontal and vertical control of the project location.

Crockett County - A survey crew at SKG Engineering staked a five mile meandering division line across an 11,319 acre ranch in Crockett County, Texas.

Galilee Community Development Corporation - SKG Engineering performed property and ALTA surveys for Galilee Community Development Center in San Angelo, Texas.

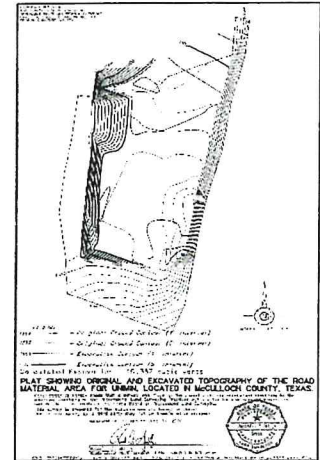
Howard College - SKG Engineering performed a property survey and a topographic survey for Howard College's San Angelo Campus.

Tom Green County - SKG Engineering provided both a boundary survey and a topographic survey of a 1,260 acre solar energy tract in Tom Green County, Texas.

Goodyear Proving Grounds - SKG Engineering performed a full site utility survey for the Goodyear Proving Grounds. When new utilities are placed, SKG Engineering updates the survey and provides Goodyear with a new utility map.

Pecos County - SKG Engineering provided and ALTA/ACSM land title survey of 1,958 acres in Pecos County, Texas for a solar energy tract.

City of San Angelo—SKG Engineering performed a property survey for the City of San Angelo City Hall **San Angelo, Texas** - A survey crew at SKG Engineering provided both a boundary and a topographic survey for a 12 field baseball complex in San Angelo, Texas.



LABORATORY/CONSTRUCTION MATERIAL TESTING

SKG

LABORATORY SERVICES



SKG Engineering's Laboratory Department provides soil testing, bacteria testing, gas chromatography, water analysis, and many other services. In addition to the fully equipped analytical laboratory, we have field equipment capabilities such as water well measurements and monitoring equipment, field analytical monitor, soil and solid waste sampling equipment, and all related safety equipment.

The laboratory will furnish, on request, any sample collection instructions, sample containers, shipping containers or shipping instructions required for your testing needs. It is advisable to contact the lab prior to sample collection for guidance in any special procedures that may be required. Some of the laboratory services we offer are listed below.

Water Analysis for General Water Chemistry
TWC & NPDES Self Reporting Analysis
General Solid Waste Analysis
Industrial Wastewater Analysis
Municipal Wastewater Analysis
Soil Analysis (Engineering Properties)
Feed and By-Products Analysis
Water Bacteriology
Soil Analysis (Chemical)
Water Treatability Studies



CONSTRUCTION MATERIAL TESTING SERVICES

SKG Engineering offers construction material testing and inspection services for private and public sector projects. Our comprehensive experience provides an essential understanding to meet varying material requirements for all types of clients, owners and projects. SKG Engineering services provide high quality materials engineering, testing, and inspection services by working closely with design professionals and other project team members throughout the duration of the project.

SKG Engineering offers the following Construction Material Testing Services:

Soil Testing and Observation - Earthwork and site grading activities are critical to the successful performance of construction projects. SKG Engineering offers to assist during the pre-bidding phase, pre-construction phase and construction phase of your project. We offer services in specification review, Borrow source evaluation, site stripping, undercutting and subgrade evaluation, density testing and fill placement observation, post-construction fill assessment.

Foundation Construction Review— SKG Engineering is qualified to assist clients in the design and construction of a proper foundation system - an essential element in the successful performance of any structure. We can assist in assessing foundation alternatives, evaluating cost effectiveness, providing detailed design, and performing testing and observation during construction.

Concrete Testing, Engineering and Observation - Concrete is a basic component of most construction projects. SKG Engineering services include pro-construction review, auditing and observing concrete batch plants and trucks, fresh concrete field testing and observation, laboratory testing of hardened concrete, and evaluating in-place conditions.

Asphalt Testing, Engineering and Observation - SKG Engineering is qualified to perform design and testing of asphalt pavements and can assist from the preliminary design phase through the final phase of construction. Our services include design and inspections in regard to temperature, thickness joint construction and overall placement practices.

Testing and Observation of Construction Materials - SKG Engineering offers testing and sampling of in situ soils to provide accurate characterization of site conditions. Laboratory testing services include soil classification, moisture content, Atterberg limits, sieve analysis, gravel analysis, and proctors.





RUSSELL T. GULLY, P.E., R.P.L.S.

Education:

B.S. in Civil Engineering
Texas A&M University
College Station, Texas

Certifications:

Professional Engineer,
State of Texas, No. 87727
Registered Professional Land Surveyor
State of Texas, No. 5636

Professional Experience

Mr. Gully is the Manager of SKG Engineering, LLC and the Chief Engineer and Surveyor responsible for the design and development of engineering and surveying projects. He has over 25 years experience that covers all aspects of land development, subdivision planning, drainage studies, storm water control design, water distribution, wastewater collection, construction supervision, and land surveying.

Mr. Gully has a strong back ground in land development and municipal projects. He routinely consults with clients on commercial and municipal projects. He is part of the entire design process from conceptual planning, surveying, plan and specification production, project management and administration, and construction supervision to project closeout. Mr. Gully's experience includes, but is not limited to schools, industrial, commercial, municipal, water and wastewater systems, sports fields and stadiums, large surveying projects, drainage studies, and intensive civil engineering projects.

Project Experience

- **Surveying:** Topographic Surveying, Subdivision Plats, ALTA & TSPS Land Title Surveys, Elevation Certificates, and Construction Staking.
- **Civil Engineering Consulting:** Work with clients to assess civil engineering related topics of drainage, construction materials, suitability studies, site development, and construction phase engineering administration.
- **Land Development – Subdivisions:** Perform land planning and civil engineering services for the development of land into residential and commercial subdivisions. This work includes the laying out of parcels; design of water, sewer, and street networks; and drainage analysis.
- **Commercial and Retail Site Design:** Integration of the topographic and boundary survey, Geotechnical Investigation, site layout, grading plan, utility design, drainage study, erosion control plan, details, and specifications into a set of permit ready construction documents.
- **Sport Fields and Running Tracks:** Performed the civil engineering design of football and baseball stadiums, soccer complexes, running tracks, field events, amenities, and parking lots.



JASON CLINTON, P.E.

Education:

B.S. in Civil Engineering
Texas A&M University
College Station, Texas

Certifications:

Professional Engineer,
State of Texas, No. 99195

Professional Experience

Jason is a Principal Partner and the Engineering Manager overseeing professional engineers and engineers in training on staff at SKG. Mr. Clinton performs marketing across the state of Texas as well as locally. Jason manages projects in all departments at SKG that include, engineering, environmental surveying and construction materials testing. Jason has over 15 years of experience that covers hydrology, geotechnical investigations, foundation designs, roadway designs, feasibility studies and environmental projects.

Jason has a strong background in client relations and determining what projects will require. He has diverse experience that covers all aspects of engineering, environmental and surveying that SKG performs. He is part of the process of projects from the point of feasibility studies and scoping out the engineering for the project to completing the engineering and providing construction oversight and construction administration. Jason's experience includes, but is not limited to schools, municipalities, county projects, industrial, commercial, surveying projects and diverse geotechnical investigations.

Project Experience

- **Crockett County** - Performed the geotechnical investigation for the Crockett County Detention Facility. Managed the surveying and performed utility easements as required for the Detention Facility. Performed the geotechnical investigation for the Crockett County Wellness Center. Performed the geotechnical investigation for the Shannon Clinic.
- **Shannon Medical Center** - Performed a geotechnical investigation for the four-story Shannon Medical Office Building in San Angelo, Texas. Also, managed the construction materials testing during the construction phase of the project that included inspections and overview of pier installations of fifty-foot deep piers.
- **City of Junction** - Provided Resident Project Representative inspections during the construction phase of the project. Performed the construction administration and pay application processing for the water treatment facility.



JERRY WHITE, P.E.

Education:

B.S. in Civil Engineering
Texas Tech University
Lubbock, Texas

Certifications:

Professional Engineer,
State of Texas, No. 110408

Professional Experience

As a Professional Engineer, Mr. White has many responsibilities at SKG Engineering. Mr. White performs engineering design and provides consultation on projects including: structural design, foundation design, structural inspections and remediation. Mr. White's experience in structural design includes numerous higher education projects, medical, religious and private sector structures.

Prior to joining SKG, Mr. White was with Mueller Inc., where he completed structural design and building design of a multitude of steel buildings. His experience also includes designing water and wastewater systems for the City of Lubbock through hydrologic modeling.

Project Experience

Angelo State University Mayer Pressbox

Shannon ASU Sports Medicine Clinic

Angelo State University Stephens Chapel

Angelo State University Hunter Strain Engineering Lab

Angelo State University Greenhouse

Angelo State University Academic Building Renovations

Glenn Elementary School Cafeteria Addition

Lakeview High School Science Wing Addition

Bradford Elementary School New Building

Shannon Medical Center Clinic North

Grape Creek Middle School New Elementary and Middle School Buildings



ETHAN GEORGE, S.I.T.

Education:

B.S. in Geomatics
Texas A&M University-Corpus
Christi
Corpus Christi, Texas

Certifications:

Surveyor in Training #110380
Texas Board of Professional Land Surveying

Associate Environmental Professional # 375844
National Registry of Environmental Professionals

Qualified Compliance Inspector of Stormwater
#1561711

Qualified Preparer of Stormwater Pollution
Prevention Plans #1561711

Professional Experience

Mr. George is a project manager at SKG capable of completing all facets of projects and consistently provides his clients with exceptional work and a quick turnaround. Mr. George is currently a Surveyor in Training, a Nationally Registered Environmental Professional, and is also certified in stormwater compliance inspection, sediment and erosion control, pollution prevention, and preparation of stormwater pollution prevention plans.

Mr. George has more than 6 years' experience in civil design, land surveying, hydraulic and hydrologic analysis, stormwater and environmental assessments and remediation. Mr. George is known for his work in innovative problem solving for regulatory issues. In addition, Mr. George is responsible for Environmental Site Assessments, water and wastewater utility design and permitting, and water treatment. He also brings the experience of work and planning using geographic information systems (GIS).

Project Experience

- **Harvest Petroleum** - Performed an environmental site assessment and provided a report based on the investigation for over 20,000 acres of land in Sterling, Glasscock, and Howard Counties, Texas.
- **Spence Reservoir Bathymetric Survey** – Completed a bathymetric survey of Spence Reservoir in Coke County, Texas involving echo-sounding data collection of more than 5.9 million points over approximately 300 linear miles. Mr. George also performed surface interpolation of the data to provide GIS files and created mapping files for use in Lowrance GPS Chartplotters.
- **Signor Lodging** – Served as the sole consultant responsible for all site design, platting, water and wastewater design, and regulatory permitting for all Signor Lodging projects in Texas, New Mexico, and Oklahoma from 2015 to their merger in 2019. Mr. George continues to perform the same duties for the new lodging company since the merger.
- **SolaireHolman Solar Project** – Performed a comprehensive hydrologic and hydraulic analysis for a 400-acre solar plant which involved modeling of over 57,000 acres of drainage area and determining increase in site runoff after construction.
- **Sterling County, Old Big Lake Road** - Performed a hydraulic analysis which involved modeling the watershed for over 3,000 acres of land, computing peak flows and depth for various storm events, and modeled the flow through the culverts required to route the events.