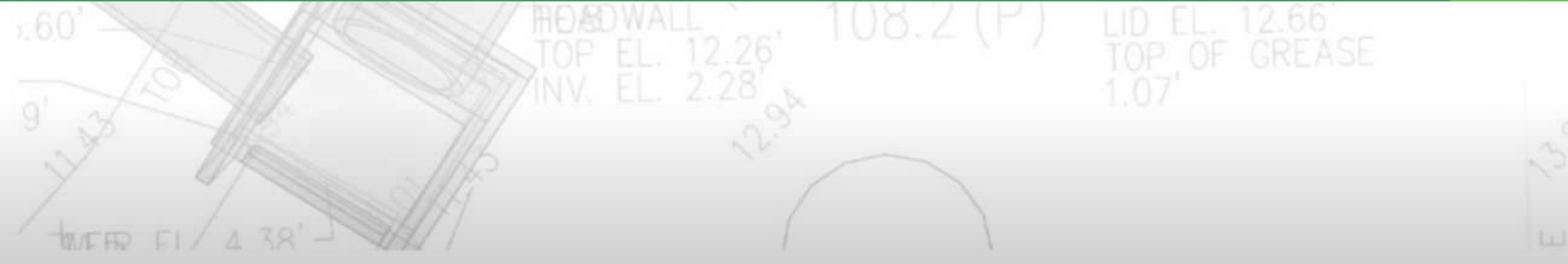




TOWN OF EATONVILLE WW 480290 WASTEWATER COLLECTION SYSTEM IMPROVEMENTS LAKE LOVELY, NORTHEASTERN, AND VEREEN NEIGHBORHOOD PROJECTS



ENGINEERING, PLANNING &
ENVIRONMENTAL CONSULTING
SINCE 1958

Program Overview

■ Project Goals

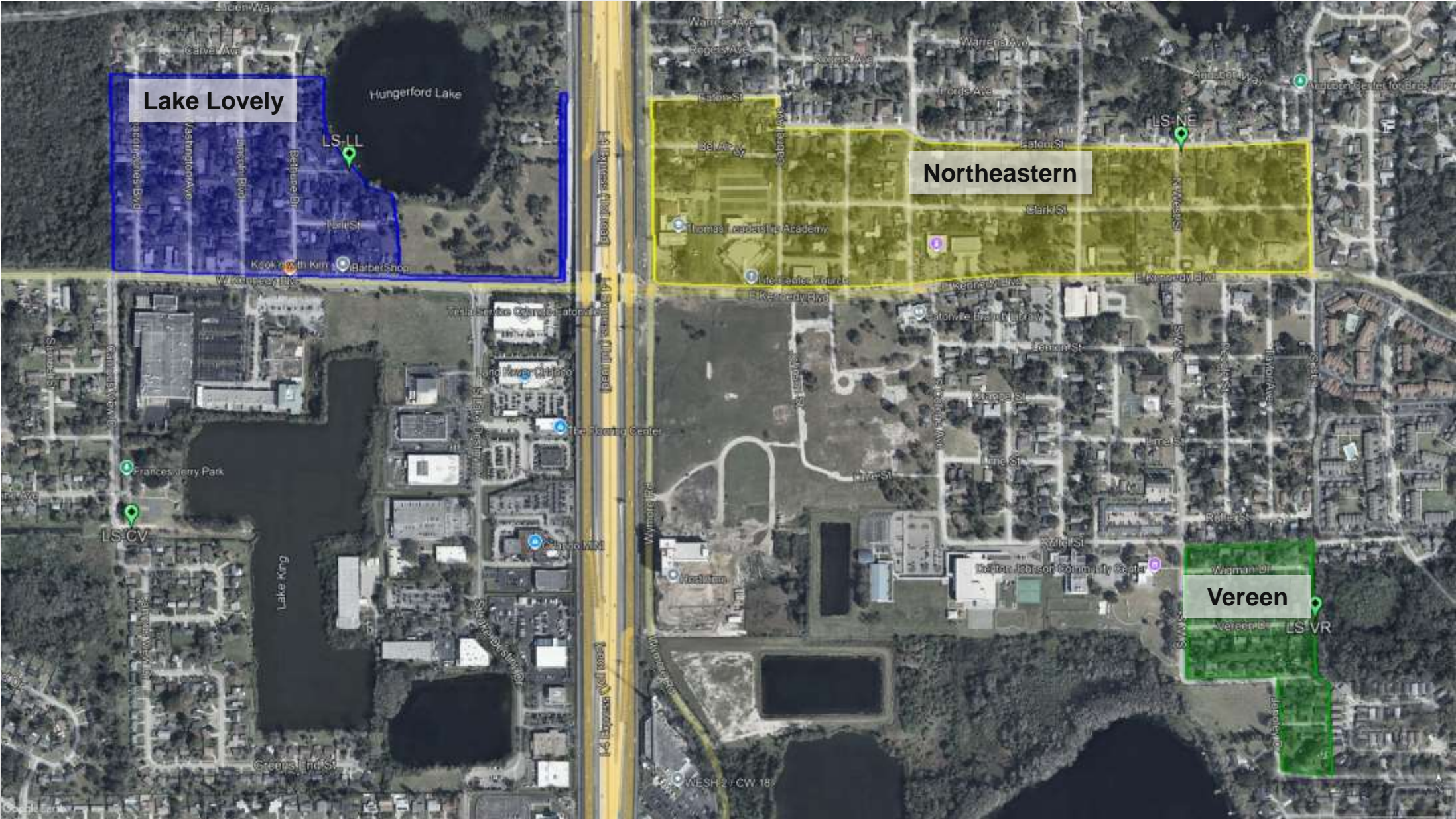
- Renew aging sewer infrastructure
- Reduce Infiltration and Inflow (I/I) into sewer systems
- Replace leaking pipes and manholes
- Renew/replace sewer laterals to individual properties (to edge of property line)
- New PVC pipe and liners to replace existing materials



■ Project History

- 2019 Condition Assessments
 - CCTV inspections of Gravity Sewer Mains
 - Gravity Sewer Defect Reports
- 2023 Wastewater Master Plan
 - Project Limits and Scopes of Work Defined
 - Budgetary Cost Estimates
- 2025 SRF Facilities Plans
 - Refined Project Scopes of Work, Budgets
 - Required for SRF Grant Funding
- Q3 2025 to February 2026
 - CCNA Selection of Engineering Firms
 - Engineering Design Notice to Proceed – Feb 2026

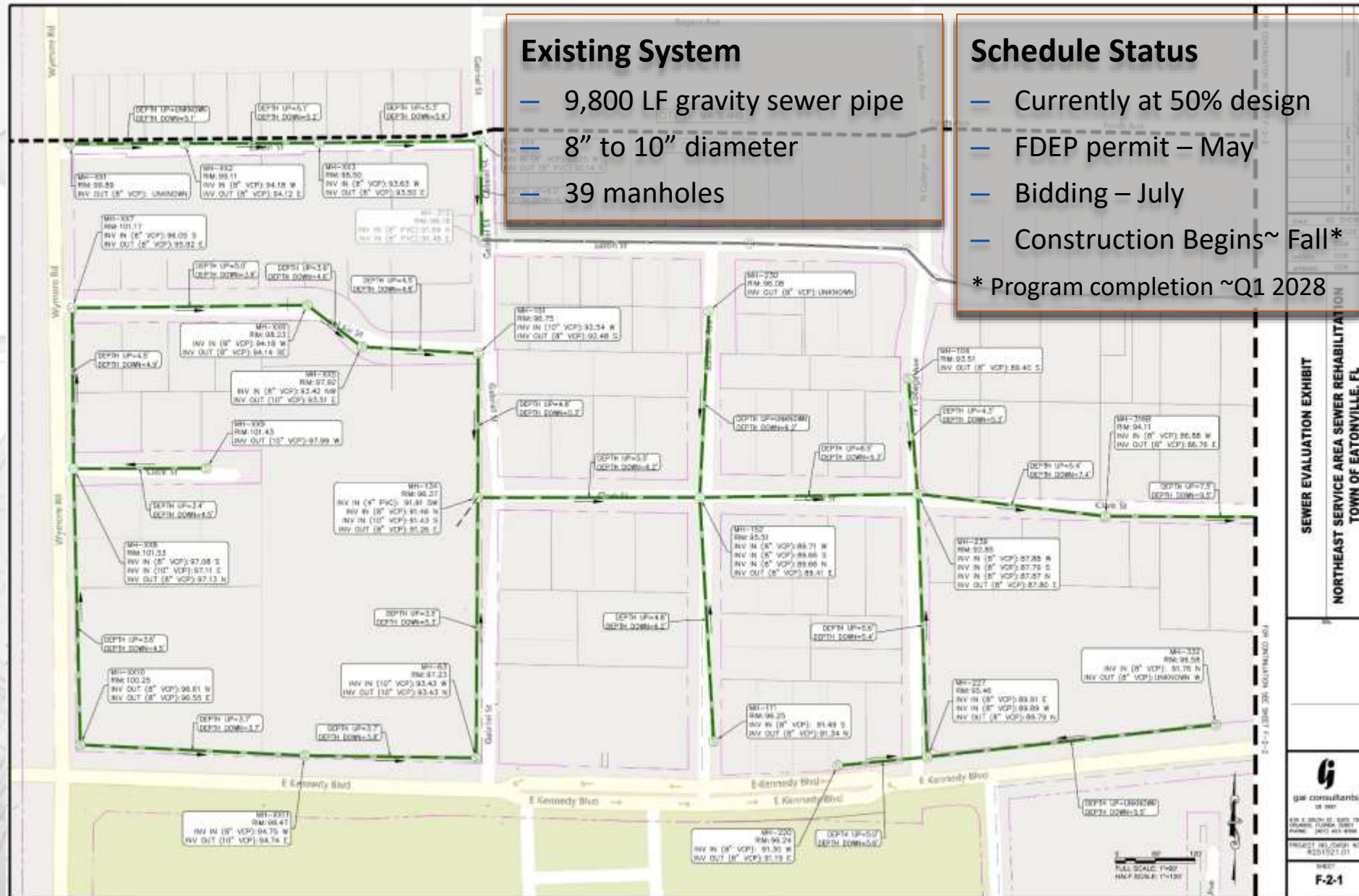
Overview Map



Northeastern Service Area (West Portion)

Renewal & Replacement Area

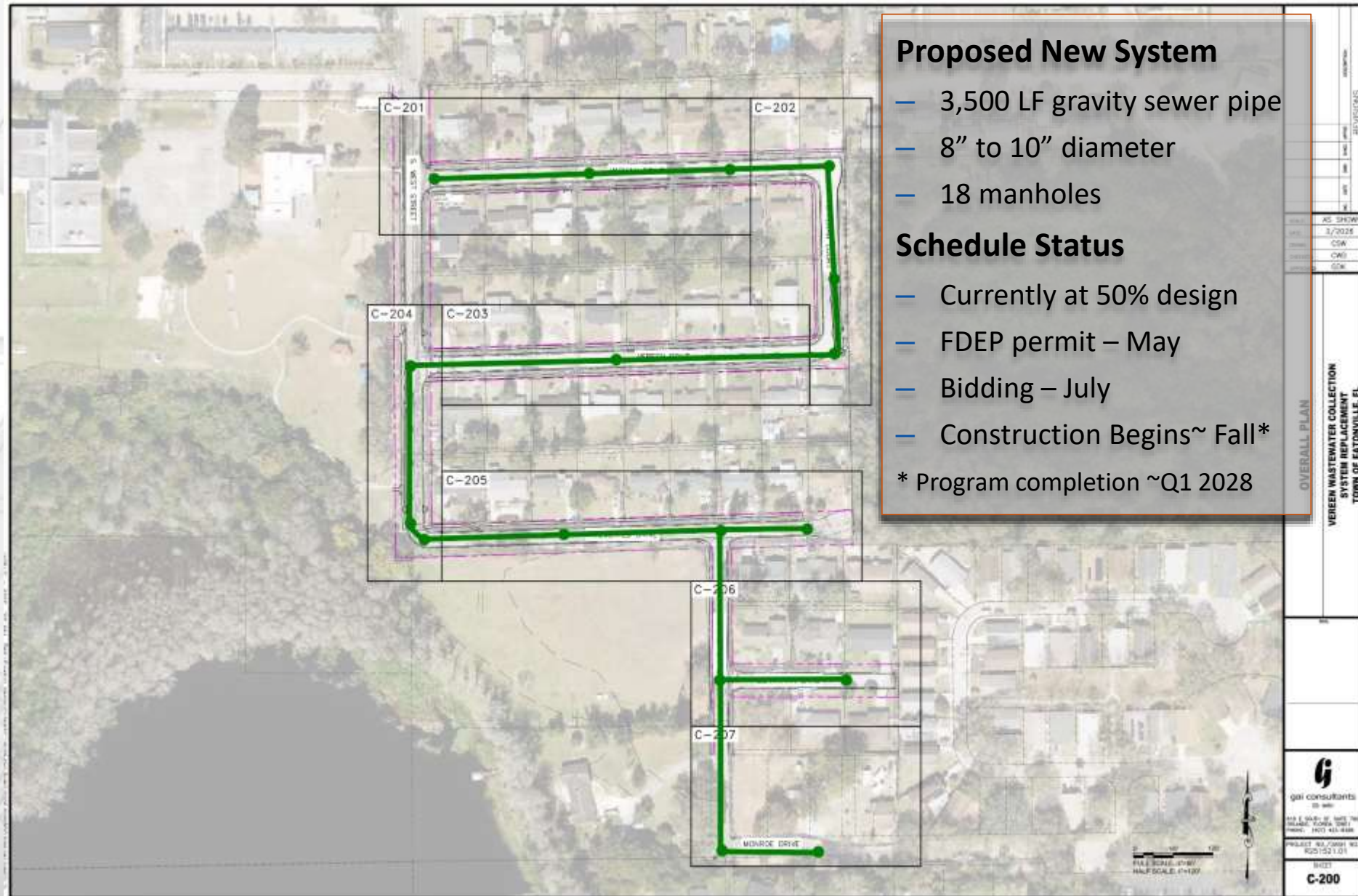
- Renew/Replace gravity sewer pipe segments
- Renew/Replace gravity sewer manholes
- Excavations in roadways at and between existing manholes
- Localized bypass pumping, dewatering activities



Vereen Service Area

■ New System

- New gravity sewer manholes in roadways
- New gravity sewer pipe segments in roadways
- Excavations in roadways at and between new manholes
- Dewatering activities, Maintenance of traffic



Project Approach

■ Continuation of Services and Public Outreach

- Individual residential/commercial utility services (water, power, cable/internet, etc.) to be protected/maintained during construction
- Excavations within roadways to be backfilled/covered and barricaded at the end of each workday
- Access for public services to be maintained throughout (garbage pickup, US postal service, police & fire departments, etc.)
- Restoration of sidewalks, landscaping, driveways will follow construction completion
- More specific public outreach with each neighborhood will follow as design phase is concluded (Summer 2026)





QUESTIONS & ANSWERS



TOWN OF EATONVILLE WW 480290 WASTEWATER COLLECTION SYSTEM IMPROVEMENTS LAKE LOVELY, NORTHEASTERN, AND VEREEN NEIGHBORHOOD PROJECTS



ENGINEERING, PLANNING &
ENVIRONMENTAL CONSULTING
SINCE 1958