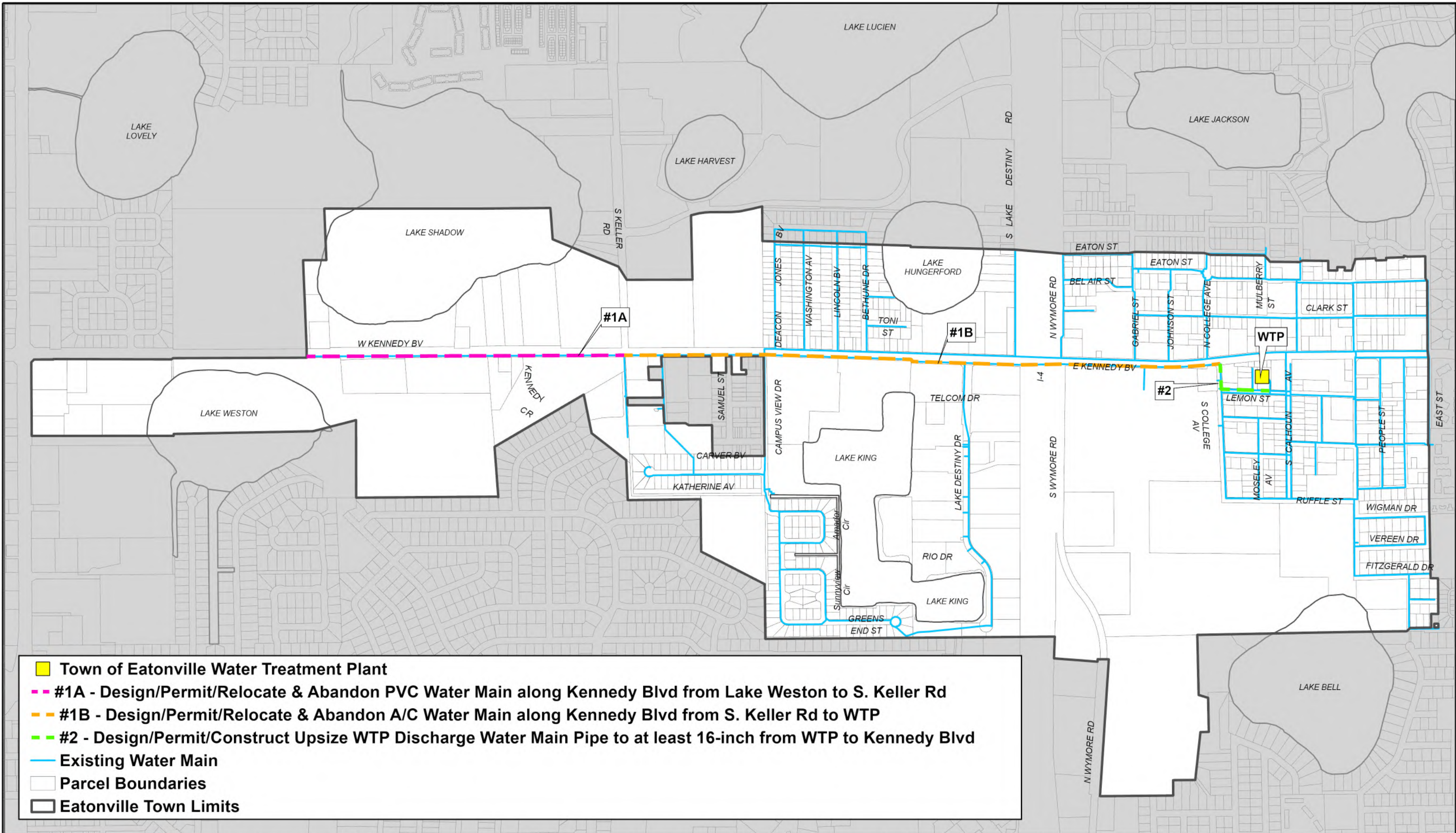





DRINKING WATER SYSTEM IMPROVEMENTS

PHASING PLAN

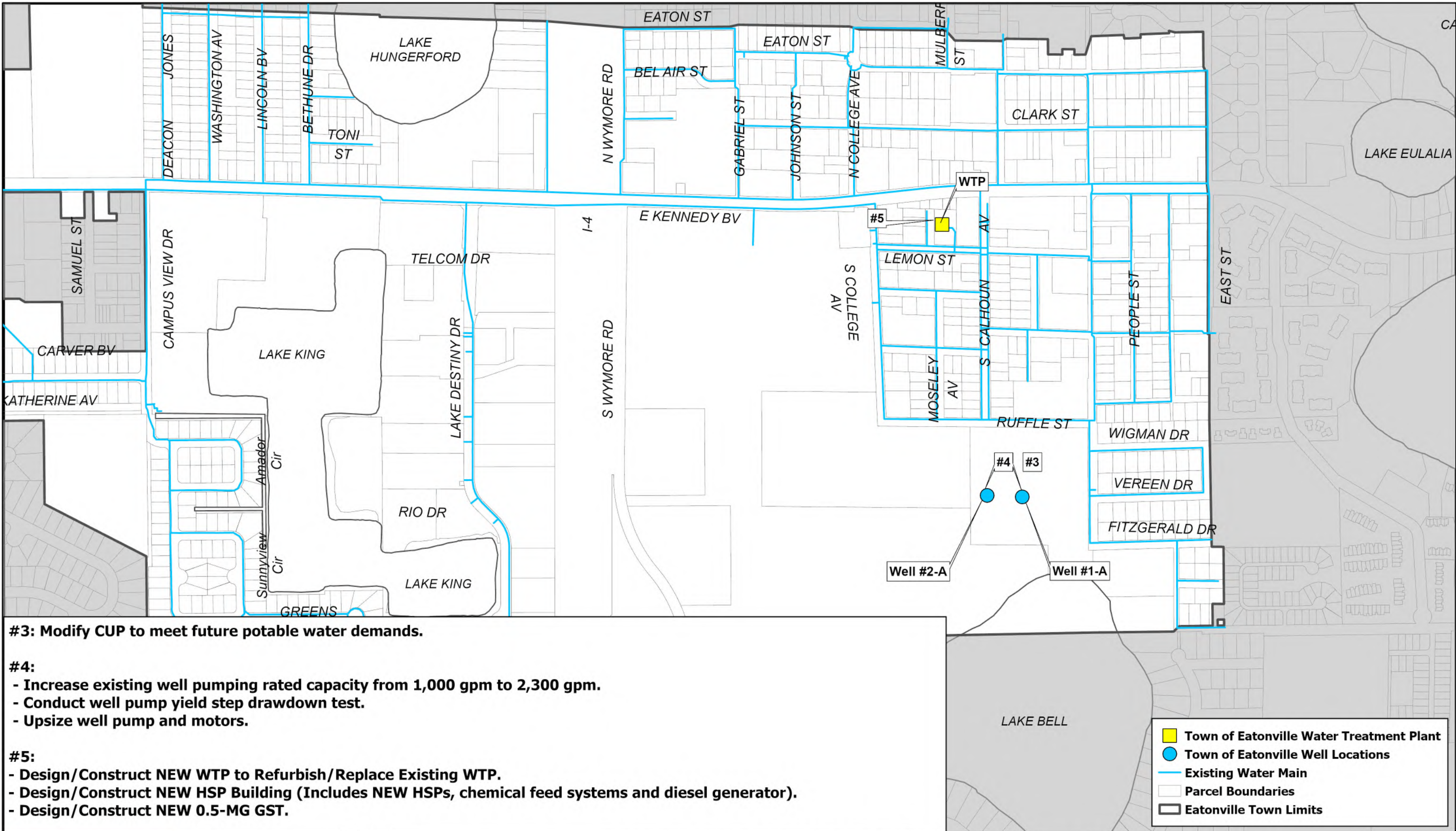
Scale: 1 inch = 800 feet
Date: 1/26/2024
Photo Date: N/A
Project No. E6614
GIS: LEC



TOWN OF EATONVILLE POTABLE WATER SYSTEM RECOMMENDATIONS - PHASE 1

TOWN OF EATONVILLE
ORANGE COUNTY, FLORIDA

**FIGURE
9-1**



#3: Modify CUP to meet future potable water demands.

- #4:**
- Increase existing well pumping rated capacity from 1,000 gpm to 2,300 gpm.
 - Conduct well pump yield step drawdown test.
 - Upsize well pump and motors.

- #5:**
- Design/Construct NEW WTP to Refurbish/Replace Existing WTP.
 - Design/Construct NEW HSP Building (Includes NEW HSPs, chemical feed systems and diesel generator).
 - Design/Construct NEW 0.5-MG GST.



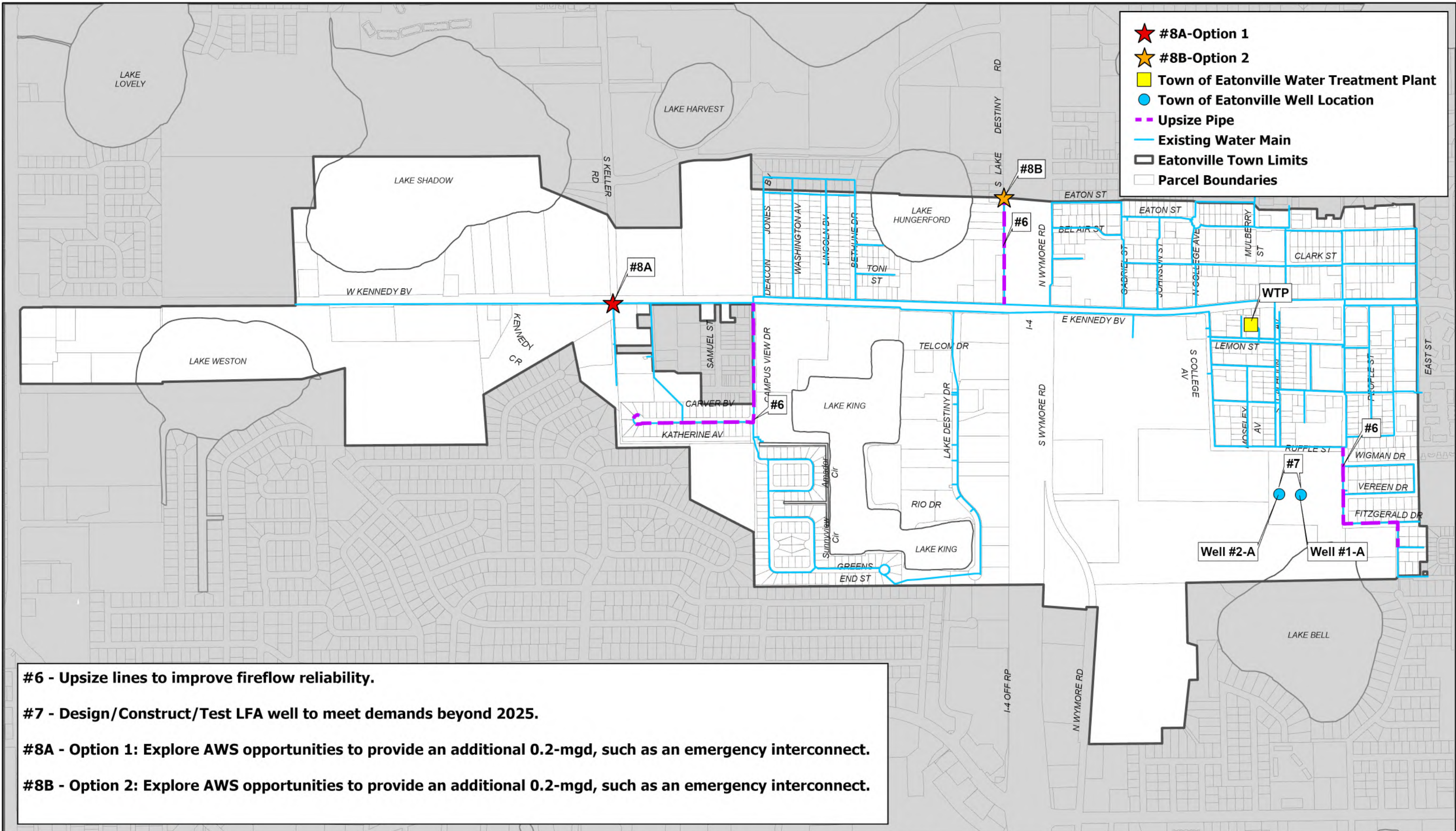
Scale: 1 inch = 500 feet
 Date: 1/26/2024
 Photo Date: N/A
 Project No. E6614
 GIS: LEC



TOWN OF EATONVILLE POTABLE WATER SYSTEM RECOMMENDATIONS - PHASE 2

TOWN OF EATONVILLE
 ORANGE COUNTY, FLORIDA

**FIGURE
 9-2**



- #6 - Upsize lines to improve fireflow reliability.
- #7 - Design/Construct/Test LFA well to meet demands beyond 2025.
- #8A - Option 1: Explore AWS opportunities to provide an additional 0.2-mgd, such as an emergency interconnect.
- #8B - Option 2: Explore AWS opportunities to provide an additional 0.2-mgd, such as an emergency interconnect.



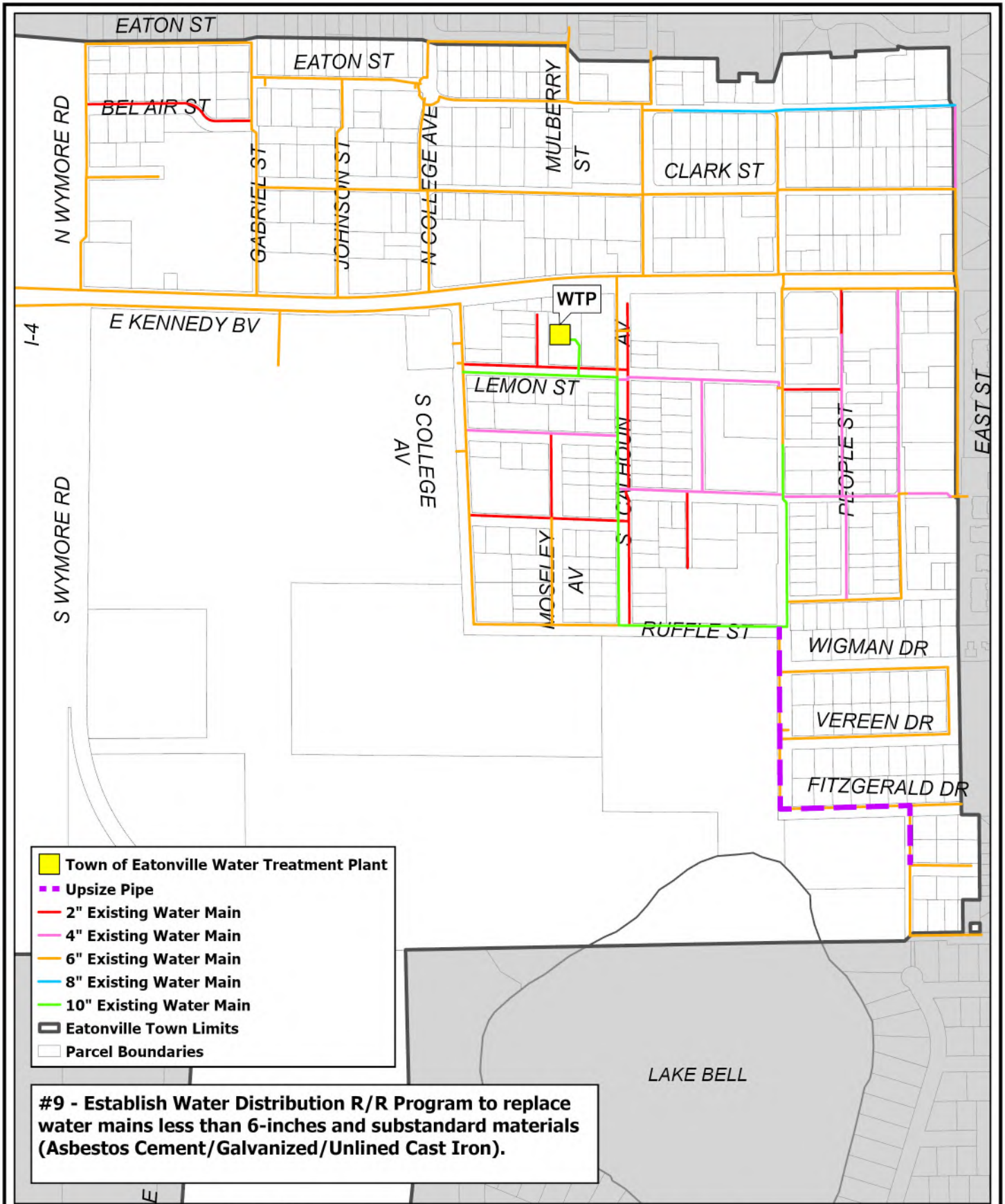
Scale: 1 inch = 800 feet
 Date: 1/26/2024
 Photo Date: N/A
 Project No. E6614
 GIS: LEC



TOWN OF EATONVILLE POTABLE WATER SYSTEM RECOMMENDATIONS - PHASE 3

TOWN OF EATONVILLE
 ORANGE COUNTY, FLORIDA

FIGURE
 9-3



- Town of Eatonville Water Treatment Plant
- Upsize Pipe
- 2" Existing Water Main
- 4" Existing Water Main
- 6" Existing Water Main
- 8" Existing Water Main
- 10" Existing Water Main
- Eatonville Town Limits
- Parcel Boundaries

#9 - Establish Water Distribution R/R Program to replace water mains less than 6-inches and substandard materials (Asbestos Cement/Galvanized/Unlined Cast Iron).



Scale: 1 inch = 500 feet
 Date: 1/26/2024
 Photo Date: N/A
 Project No. E6614
 GIS: LEC



TOWN OF EATONVILLE
 SMALL LINE REPLACEMENT PROGRAM

TOWN OF EATONVILLE
 ORANGE COUNTY, FLORIDA

FIGURE 9-4