



2012
Celebrating 100 Years
HISTORIC TOWN OF
EATONVILLE



EST. 1887



25



TABLE OF CONTENTS

1. FIRM PROFILE
2. WHAT WE DO
3. CATALINA / FRANCES JERRY PARK



1

OUR FIRM PROFILE | LEADERSHIP

Rhodes+Brito Architects: Designing Better Communities

Founded in downtown Orlando in 1996 by Ruffin Rhodes, AIA, NOMA, and Maximiano Brito, AIA, Rhodes+Brito Architects was built on a shared vision: to create a people-focused architecture studio that delivers exceptional projects through dedicated service. Drawing from years of experience in project management and lead design roles at large international firms, they established a practice rooted in collaboration, innovation, and community impact.

Shortly after its inception, Byron Lastrapes, AIA, NCARB, joined the firm, quickly rising to Principal due to his expertise in leading complex projects. In 2017, Adel Shalaby, AIA, LEED AP BD+C, PMP, was also named Principal, further strengthening the firm's leadership. By 2023, Adel became a shared partner, joining the core leadership team that continues to shape the firm's future.

At Rhodes+Brito, we believe architecture is more than a profession—it's a means to build stronger, more connected communities. Our design philosophy, centered on **"Designing Better Communities,"** has been our guiding principle for nearly three decades. To us, architecture is about fostering meaningful relationships, maintaining clear communication, and delivering solutions-driven design. It's about creating spaces that balance aesthetics, functionality, and budget while enhancing the lives of those who use them.



Ruffin Rhodes, AIA
PRINCIPAL



Maximiano Brito, AIA
PRINCIPAL



Byron Lastrapes, AIA
PRINCIPAL



Adel Shalaby, AIA
PRINCIPAL



rhodes + brito
ARCHITECTS

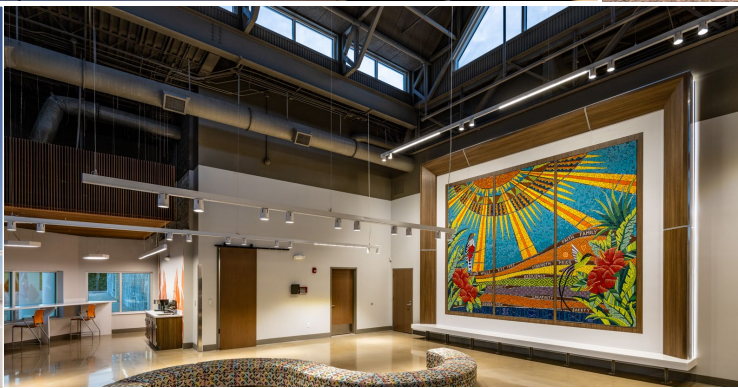


Inclusivity
Charity
Shared Values

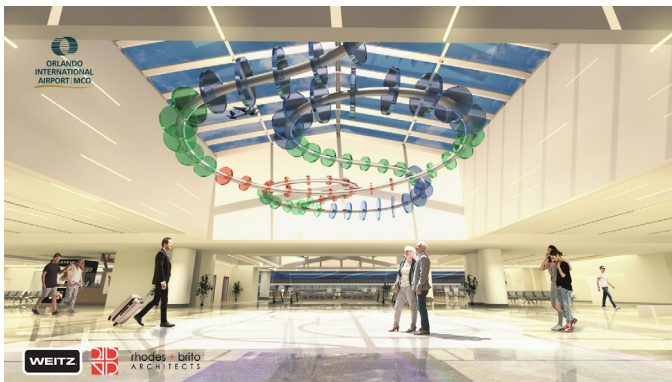
INTEGRITY
DEPENDABLE
PROACTIVE
COLLABORATIVE

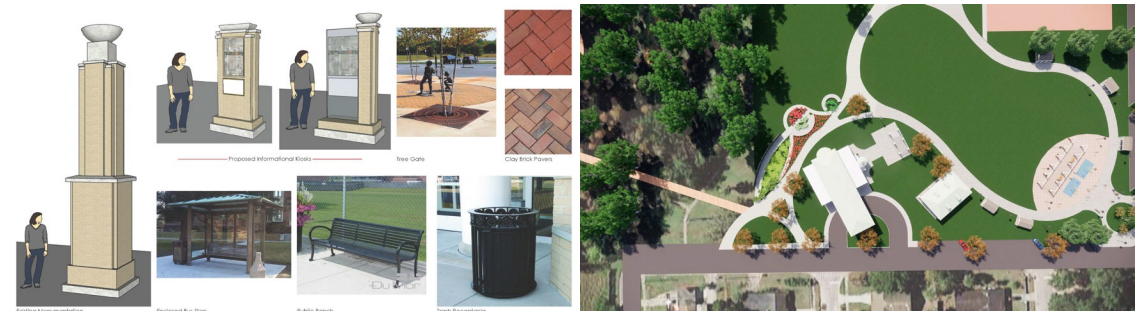


rhodes + brito
ARCHITECTS









Architecture

Overview

Rhodes+Brito Architects offers a revolutionary way to engage with architecture through our Architecture as a Service model. Our integrated process streamlines design, planning, and execution, making high-quality architectural solutions accessible and efficient. We take pride in our ability to deliver personalized, innovative designs that meet the diverse needs of our clients.



Interior Design

Overview

We offer premier interior design services that turn ordinary spaces into extraordinary experiences. Our design philosophy emphasizes creativity, elegance, and sustainability, ensuring that every project is not only beautiful but also environmentally conscious. We work hand-in-hand with our clients, translating their dreams into stunning realities. Discover the difference that thoughtful design can make in your space.



Master Planning

Overview

Master Planning is about envisioning the future of communities. Our team collaborates with stakeholders to create comprehensive plans that balance sustainability, functionality, and aesthetic appeal. With a focus on long-term growth, we design spaces that are adaptable and resilient. Partner with us to bring your vision to life.





Catalina/Frances Jerry Park

201 Campus View Eatonville, FL 32810

This stormwater park with green infrastructure includes Green Stormwater Infrastructure (GSI) features to reduce stormwater runoff and protect the water quality and reduce flooding of Lake King. Retention basins, rain gardens, native plants/trees and other vegetation will be installed to improve the uptake and drainage of stormwater. The project also includes a new Community Resilience Hub and aerator fountain. A new IOT sensed flood risk management system along with a bioengineered lining of the outfall canal will be installed. Park features requiring replacement will be updated including fishing piers, pavilions and walkways. New property will be acquired to provide additional overflow storage to meet engineering requirements in the Jacobs stormwater model.



❑ Design Consultation – Sub Station / Resilient Hub

- Design Concepts for Police Substation, Resilience Hub at Jerry Francis Park

❑ Master Planning Services

➤ Project Kickoff Meeting

- ▶ Introduce team members
- ▶ Review the project scope
- ▶ Confirm project schedule
- ▶ Confirm project deliverables
- ▶ Schedule stakeholder meetings.
- ▶ Answer Questions

➤ Data Collection

- ▶ Research entitlements
- ▶ Identify stormwater areas
- ▶ Meetings with the Town Planner, AHJ
- ▶ Locate existing studies
- ▶ Boundary / Topographical survey
- ▶ Research easements
- ▶ Significant architectural features
- ▶ CEPTED Analysis

➤ Conceptual MP (DRAFT)

- ▶ Public Meeting – Assets/Liabilities Discussion
- ▶ 1 day Public Design Charrette (schedule)
- ▶ Confirm Project Deliverables
- ▶ Conceptual studies - Draft
- ▶ Stakeholder open house – Presentation of Draft Concepts
- ▶ Council Presentation of the Draft MP

➤ Final MP

- ▶ Preliminary Final MP
- ▶ Public Open House
- ▶ Final Master Plan
- ▶ Preliminary Engineering
- ▶ Conceptual Building Elevations

□ Architectural/Engineering Services

- ▶ Schematic Design
- ▶ Design Development
- ▶ Construction Documents
- ▶ Permitting
- ▶ Bid & Award
- ▶ Construction Phase Services



DESIGNING
Better
COMMUNITIES