



1130 N. Alma School Rd. • Suite 120  
Mesa, AZ 85201 • 480.503.2250

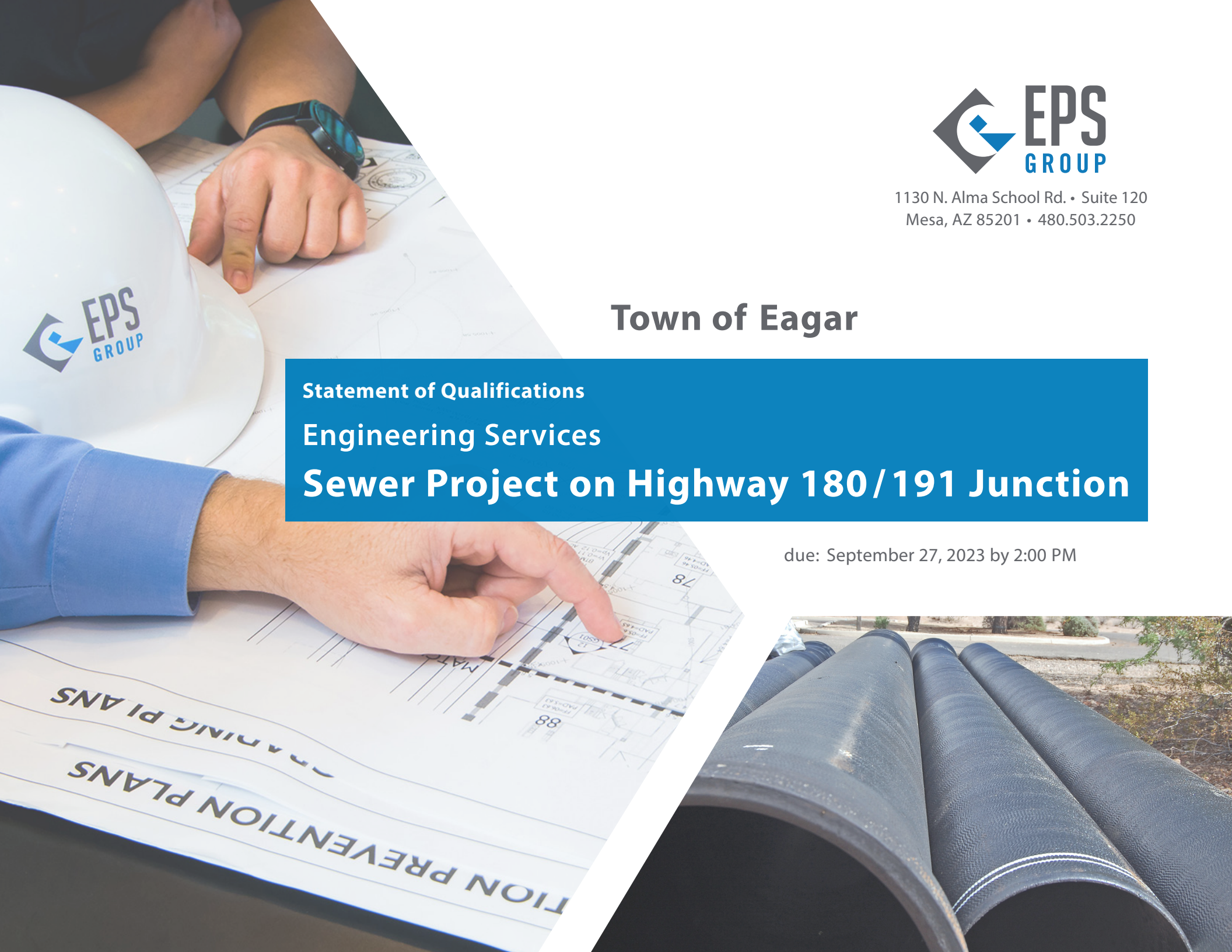
## Town of Eagar

Statement of Qualifications

Engineering Services

**Sewer Project on Highway 180/191 Junction**

due: September 27, 2023 by 2:00 PM



September 27, 2023

Town of Eagar  
Attn: Jessica Vaughan, Town Clerk  
22 W. 2nd Street  
Eagar, Arizona 85925

Re: Request for Qualifications, Engineering Services – Sewer Project on Highway 180 / 191 Junction

Dear Members of the Selection Committee:

EPS Group, Inc. is excited about this opportunity to build on our working relationship with the Town of Eagar (Town). Founded in Mesa, Arizona in 2003, our company has steadily grown in size over the years – though EPS Group still offers the Town the familiarity of a local company. With a staff of 300, no other civil engineering and survey firm gives you the combination of Arizona ownership and robust personnel resources.

EPS Group is the ideal teaming partner for the Sewer Project on Highway 180 / 191 Junction:

- **Experience in Delivering Recent Tasks for the Town of Eagar** – EPS Group currently has an on-call engineering services contract with the Town, and has been awarded several tasks, including a recent sewer project on Main Street. Our team has reviewed your sewer project, and we are familiar with its unique challenges. EPS Group has designed and managed hundreds of projects of all types and sizes in municipalities – small and large – across Arizona. We know both how to develop public infrastructure in the Town of Eagar, and how to facilitate accepted solutions.
- **Effective Project Management** – EPS Group not only has unmatched capabilities in project development, budgeting, and design deliverables, but also extensive experience in managing those projects through construction. We will provide the effective leadership that the Town of Eagar expects and should receive under this assignment.

- **Talented, Arizona-based Staff** – Our proposed engineering professionals all have impressive backgrounds in planning and design. The majority of our discipline leaders are owners, creating the entrepreneurial spirit of creativity, communication, and customer satisfaction that is synonymous with our firm.
- **Resources Available Immediately** – Our team is prepared to take full ownership of this project. We have a demonstrated commitment to completing project assignments according to the schedule requirements and will rapidly deploy resources to efficiently prosecute the work. The Town of Eagar can trust that EPS Group is ready for this project.

We are confident EPS Group can deliver the services you require from this contract. We look forward to working with the Town of Eagar on this important project.

Respectfully submitted,



Greg Froehlich, PE – Project Principal / Contract Manager  
greg.froehlich@epsgruoinc.com | T: 480.355.0224

## A. Individual Engineering Staff Technical Qualifications

As a top 5 Arizona firm, the EPS Group team represents some of the best talent in the industry and in their respective disciplines. Headquartered in Mesa, Arizona and founded in 2003, EPS Group is the state’s largest locally-owned engineering firm and has been in business 20 years. When you select EPS Group, you unlock the capacity of a large firm that provides local, community-centric solutions.

With a staff of 300, EPS Group’s strength lies in the ability to provide our clients extensive, experienced, in-house experts. We offer the Town of Eagar these outstanding professional resources.

Our 42 registered civil engineers are supported by dozens of EITs, drafters and designers. Additional EPS Group services include a survey department with eight registered land surveyors, more than 80 support staff, and 25 fully equipped survey vehicles; a planning and landscape architecture group (six registered landscape architects); and construction management.

As a locally-owned business, EPS Group is not encumbered by large corporate policies and out-of-state management. EPS Group is known for its

nimble nature in responding to any type of request with short advance notice. Our broad discipline base means limited reliance on consultants, allowing us to provide an accelerated start-up.

With a recently awarded projects in the Town of Eagar, we look forward to growing our relationship with your community.

### 1. Experience Performing Work of a Similar Nature

As a trusted partner for our clients, EPS Group has had a lasting impact on the Arizona landscape. From major public works to private development projects, our legacy of quality work and ever-expanding clientele is evidence of our commitment to quality and customer satisfaction. The projects listed below include EPS Group’s recent, relevant sewer and water systems projects.

#### Town of Eagar – Main Street Sewer and Pavement Rehabilitation *Eagar, AZ*

EPS Group completed survey and final engineering design for nearly 3,000 linear feet of new sewer along Main Street in Eagar, from 8th Street to 4th Street. The design included numerous service connections to adjacent properties. EPS Group coordinated with Town staff and made sure to incorporate the Town’s preferences regarding manhole spacing and pipe material, looking for ways to reduce overall cost to the Town. We conducted site visits to verify existing features and eliminate future conflicts. The result was a finished design that the Town can use the moment it is ready to construct the new sewer.



*Town of Eagar – Main Street Sewer*

PROJECT OWNER Town of Eagar

KEY STAFF Bryan Martin

DATES OF SERVICE start 03-2022 | end 09-2023

#### Other current tasks through recently awarded by the Town of Eagar:

- Alta Vista Drive, Roadway Design Services
- Butler Street: 8th St. to SR 260 Reconstruction
- Main Street: School Bus Road to 4th Street Pavement Preservation
- River Run Discharge Authorization

## SEWER AND WATER SYSTEMS EXPERIENCE

### Town of Queen Creek – Cloud Road Sewer Extension, 214th Street to Rittenhouse Road *Queen Creek, AZ*

This 1.5 mile project was completed under the Town's on-call contract. During the project's study phase, EPS Group observed that the Town of Queen Creek Wastewater Master Plan service area did not include 230 acres of County Island. With the Town's consent, these areas were added to preserve the ability to expand the system if warranted.

PROJECT OWNER Town of Queen Creek  
 KEY EPS GROUP STAFF Jon Lassuy  
 SERVICE DATES start 08-2016 | end 09-2018

### Town of Springerville – East and West Lift Stations Evaluations *Springerville, AZ*

Under a current on-call contract, EPS Group conducted a site visit and review of the original construction plans for Springerville's East and West lift stations. The Town has experienced significant issues related to regular pump repair and replacement. In discussing the matter with Town staff, it was noted that these lift station pumps are regularly clogged due to debris. After considering these conditions, EPS Group recommended that the lift station operation be modified to lower the liquid level. EPS Group further recommended that the Town collect at least a month's worth of data before committing to any design work.

PROJECT OWNER Town of Springerville  
 KEY EPS GROUP STAFF Bryan Martin  
 SERVICE DATES start 07-2022 | end 08-2022

### Town of Chino Valley – Perkinsville Road, Sewer and Water Extension *Chino Valley, AZ*

EPS Group prepared a Design Concept Report to extend water and sewer services – from the intersection of Perkinsville Road and Road 1 East, crossing SR 89 – in order to serve 587 homes. The design portion of this project includes survey, underground utility location, 4100 l.f. of water and sewer line being done in three phases, and road upgrades (including boring beneath an existing ADOT roundabout on SR 87, and paving after the water and sewer are installed).

PROJECT OWNER Town of Chino Valley  
 KEY EPS GROUP STAFF Eric Neal  
 SERVICE DATES start 12-2021 | ongoing design

### U.S. Army Corps of Engineers – Luke Air Force Base, Sanitary Sewer Mains / Laterals Replacement *Glendale, AZ*

As part of a design-build team, EPS Group provided civil engineering and survey services for this project. Since the 1950s, the Luke Air Force Base wastewater system has gradually expanded



USACE – Luke Air Force Base, Sewer Lines / System Replacement

into 160 miles of trunk main, 22 lift stations, and a wastewater treatment plant. The wastewater collection infrastructure had deteriorated due to age; and the amount of repairs had increased to an unsustainable level. After evaluating 35,236 l.f. of sewer mains by surveying, CTV scoping, and performing structural and hydraulic analyses, EPS Group determined the need to install 12,753 l.f. of new gravity sewer and force main, 36 manholes, and two lift stations to address the issues. Our recommended design restructured 20 brick manholes and lined 49 separate locations to repair 13,000 l.f. of sewer; it also eliminated six existing lift stations.

PROJECT OWNER U.S. Army Corps of Engineers  
 KEY EPS GROUP STAFF Robert Johnston  
 SERVICE DATES start 05-2018 | end 12-2021

### Salt River Pima-Maricopa Indian Community – Victory Acres, Infrastructure Reconstruction *Scottsdale, AZ*

Victory Acres is a 43-acre housing development constructed shortly after World War II on the Salt River Pima-Maricopa Indian Community.



Salt River Pima-Maricopa Indian Community – Victory Acres

The existing road, sewer and water, and drainage systems have reached their useful life cycle; and EPS Group was contracted to design the complete replacement of this infrastructure. In particular, existing roadways had no sidewalks or ADA components. EPS Group completed a full evaluation of these systems; and developed designs that accommodated ADA while respecting existing driveways, right-of-way, and residential improvements (i.e., mailboxes, fences, etc.). New roads, sewer, water, street lighting, and drainage improvements are being provided as well.

PROJECT OWNER Salt River Pima-Maricopa Indian Community

KEY EPS GROUP STAFF Jon Lassuy

SERVICE DATES start 01-2021 | end 07-2022 (design)

### Arizona Department of Administration (ADOA) / Arizona State Parks & Trails | On-Call Civil Engineering Services *Arizona*

Under this on-call contract, ADOA awarded EPS Group multiple projects to evaluate the existing utility infrastructure of various State Park lands throughout Arizona. Typical design activities include designing utility services (sewer, water, electric); evaluating existing sewer and water infrastructure and design improvements to address deficiencies; miscellaneous grading and paving designs; and topographic surveys.

Tasks assigned to date:

- Lake Havasu State Park – provide sewer connections to existing RV camping areas. Build new lift station for new sewer.
- Kartchner Caverns – evaluate wastewater treatment system and design to rehabilitate, evaluate water supply and distribution infrastructure, design improvements, survey.

- Alamo Lake – evaluate well and sewer infrastructure, design water service to campsites, dump station design, septic system rehabilitation, CXT restroom design, survey.
- Buckskin Mountain State Park – sewer and water system design, evaluate existing well and tank, replace water filtration system, CXT restrooms x2, electrical service design, survey.
- River Island State Park – sewer and water system design, evaluate existing well, replace storage tank, replace water filtration system, CXT restroom, electrical service design, survey.

PROJECT OWNER Arizona Dept. of Administration

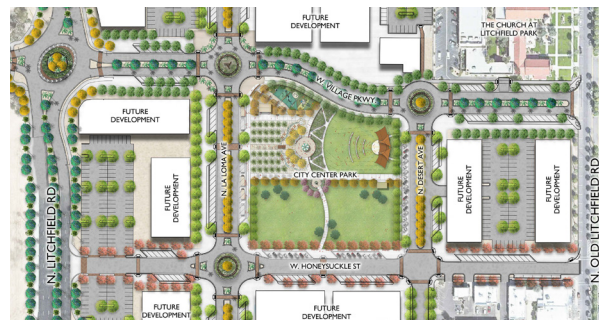
KEY EPS GROUP STAFF Eric Neal

SERVICE DATES start 04-2022 | contract is ongoing

### City of Litchfield Park – Litchfield Square at City Center, Sewer and Water

*Litchfield Park, AZ*

EPS Group is providing civil engineering services for major improvements to this site. For the sewer and water improvements task, EPS Group developed a preliminary study to size the lines that serve the overall project. The study analyzed the maximum potential development size shown with the site



City of Litchfield Park – Litchfield Square at City Center

planning documents. Based on this study, EPS Group prepared construction plans. The design included 2,850 l.f. of 8-inch ductile iron water line, 1,900 l.f. of 12-inch ductile iron waterline, and 2,495 l.f. of 8-inch sanitary sewer line to replace 900 l.f. of existing 6-inch waterline, 1,455 l.f. of 12-inch waterline, and 3,315 l.f. of sanitary sewer line. EPS Group provided bid phase services to select a Construction Manager at Risk, and has continued working with the selected contractor through construction (site inspection, shop drawing review, engineer of record services, and processing of Approval of Construction through Maricopa County).

PROJECT OWNER City of Litchfield Park

KEY EPS GROUP STAFF Eric Neal

SERVICE DATES start 01-2020 | end 04-2021 (Ph. 1);  
*Phase I currently under construction*

### Town of Queen Creek – Wastewater and Water On-Call Services *Queen Creek, AZ*

EPS Group completed numerous sewer and water design projects under this on-call contract.

#### SEWER

- Germann Road – 21-inch sewer main design, from Signal Butte Road to Meridian Road



Town of Queen Creek – Water / Sewer On-Call Engineering Svcs.

- Queen Creek Road – 21-inch sewer main design, from 228th Street to Meridian Road
- Signal Butte Road – 24-inch sewer main design, from Ryan Road to Germann Road

**WATER**

- Germann Road – 18-inch water main design, from Signal Butte Road to Meridian Road
- Meridian Road – 12-inch water main design, from Queen Creek Road to Germann Road
- Signal Butte Rd. – 12-inch to 18-inch water main design, from Queen Creek Rd. to Germann Road

PROJECT OWNER Town of Queen Creek  
 KEY EPS GROUP STAFF Jon Lassuy  
 SERVICE DATES start 12-2017 | end 12-2019

**Pine-Strawberry Water Improvement District (PSWID) – On-Call Engineering Services** *Pine, AZ*

EPS Group serves as the District Engineer for the Pine-Strawberry Water Improvement District (PSWID), a role similar to City Engineer for a municipality. Before EPS staff took on this role, the District suffered from regular pipe breaks and inadequate water service. In response, our team evaluated the entire water system. EPS Group



*Pine-Strawberry Water Imp. Dist. – On-Call Engineering Services*

revised the existing model, spoke with system operators, and reviewed the waterline break history to prepare a prioritized listing of projects – creating a Capital Improvement Program for the District. This list was used to obtain Water Infrastructure Finance Authority (WIFA) funding. Preparation of a yearly project construction schedule allowed improvements to occur within a three-year period, as mandated by the WIFA funding. As part of the on-call contract, EPS Group also developed GIS maps of the District’s facilities to help field crews visualize the system in relation to pressure zones.

PROJECT OWNER PSWID  
 KEY EPS GROUP STAFF Eric Neal  
 SERVICE DATES start 02-2016 | contract renew 2020

**City of Globe – US 60 Water Main Replacement** *Globe, AZ*

EPS Group designed 7,000 l.f. of 8-inch waterline to replace an oft-breaking Asbestos Cement Pipe (ACP) under historic US 60. The design included tie-ins to multiple existing facilities, the removal of an existing pressure reducing valve, four concrete box culvert crossings, and two wash crossings. Due to location of the line within US 60 and the funding source for the project, EPS Group was also tasked with coordination between the City of Globe, the



*City of Globe – US 60 Water Main Replacement*

Water Infrastructure Finance Authority, ADOT, and ADEQ for compliance of applicable regulations.

PROJECT OWNER City of Globe  
 KEY EPS GROUP STAFF Jon Lassuy  
 SERVICE DATES start 10-2014 | end 01-2016

**Town of Florence – On-Call General Civil Engineering Services** *Florence, AZ*

Under a civil engineering on-call contract, EPS Group was selected to provide services on the following projects.

- **Well #4 to Well #5 Transmission Main** – EPS Group designed 1.1 miles of 12-inch and 16-inch diameter potable water main along Ruggles Street and Willow Street. Design included stubs for future use and updates to the Town’s fire hydrant network. EPS Group coordinated the work with three other adjacent Town projects, which each had tie-ins at multiple locations to the proposed transmission line.
- **Florence Gardens Transmission Main** – EPS Group designed 1.5 miles of 16-inch diameter potable water main along SR 79 and within the Florence Gardens subdivision. Design included coordination with ADOT Utilities and Railroad Section along SR 79, and a Town distribution project within the subdivision.

PROJECT OWNER Town of Florence  
 KEY EPS GROUP STAFF Bryan Martin; Jon Lassuy  
 SERVICE DATES Wells Trans. Main: 04-2014 – 07-2015  
 Florence Gardens: 01-2017 – 09-2017

## Town of Eagar – Sewer Project on Highway 180/191 Junction | Understanding & Approach

The Valley View Mobile Home Park is located on the eastern edge of the Town of Eagar, and is home to over three dozen individual residences. Located near the intersection of Central Avenue (State Route 260) and US 180/US191, it lies at a meeting point for traffic leaving Eagar and Springerville, or coming into town from Nutrioso and Alpine.

The Park is not currently connected to the Town’s sewer, but is instead served by a septic system. In recent years, this septic system has become increasingly problematic, posing maintenance and sanitary concerns. After meeting with the Park’s ownership, the Town reached an agreement to provide sewer service to the Park.

In consideration of the ongoing concerns and the subsequent agreement, Town Council approved

a measure to accept proposals for the design of a sewer line to serve the Mobile Home Park. The line will join an existing sewer line running along 180/US191 and will provide a stub for the Park to utilize.

### ► Sewer Design Considerations

EPS Group is uniquely prepared to assist the Town with the design of the proposed sewer connection, having completed numerous similar efforts for municipalities across the state.

In fact, EPS Group recently completed a sewer rehabilitation design for nearly 3,000 linear feet of sewer on Main Street in Eagar. We understand the Town’s preferences and requirements, and we are familiar with Town staff. We are also prepared to assist in the Arizona Department of Environmental

Quality (ADEQ) approval process – because the EPS Group team has considerable experience in these efforts on similar projects.

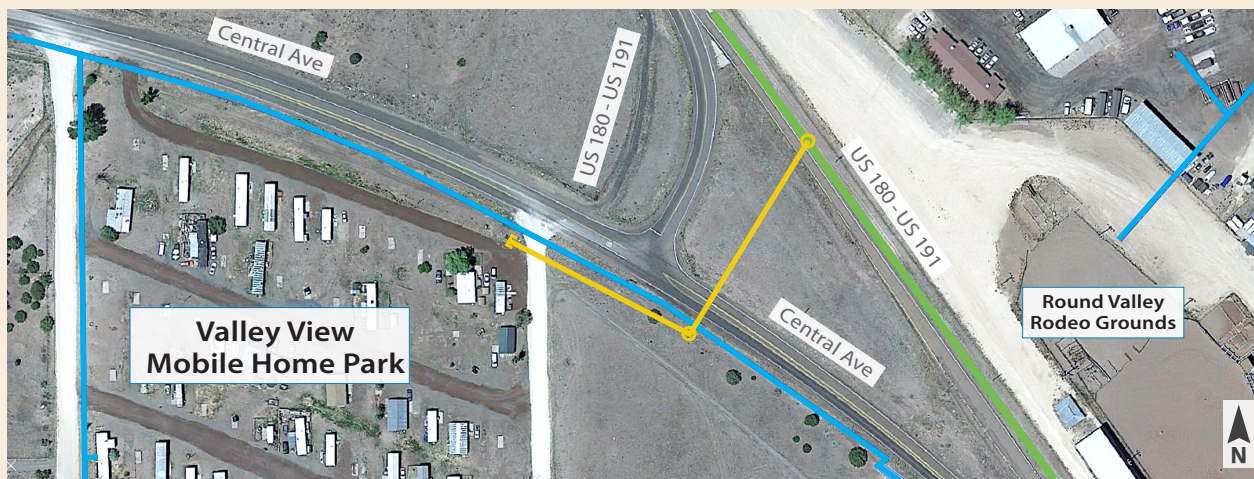
### ► Inter-Governmental Considerations

This project will require coordination with the Arizona Department of Transportation (ADOT), as much of the work will take place within ADOT right-of-way. Town staff has laid much of the groundwork for this coordination. EPS Group has worked closely with various ADOT Districts, and can provide any assistance necessary.

### ► Construction Considerations

EPS Group employs numerous traffic engineers and construction managers. With this key staff ready to assist, the Town can rest assured that the design will incorporate the most economical construction methods, while paying close attention to maintenance of traffic during construction.

### Project Map



— Existing Sewer    — Proposed Sewer    — Existing Water

## 2. Specialized Skills, Training, or Background in Engineering

EPS Group enjoys working with small towns just like Eagar. In fact, our Roadway Project Engineer, Bryan Martin, grew up in Eagar and his family still lives in town. We were also awarded a paving project in Eagar. EPS Group understands the Town's desire to improve its infrastructure, but we also know that these improvements don't happen without their own unique challenges. Our team is committed to producing engineering plans that are complete, accurate, and eliminate unsolicited phone calls to your staff and/or elected officials. The following describes how we will accomplish this goal.

### *EPS Group, A Firm Especially Well Qualified*

EPS Group staff are experts at providing multi-disciplined services under numerous municipal, county, and state contracts. We specialize in conceptualizing ideas, and generating key studies and reports to analyze the scope and feasibility of a new project. We prepare project assessments and design concept reports for new projects, and develop innovative ideas into functional designs. Ultimately, EPS Group prepares final plans, specifications and estimates for a bid package that is accurate and constructible.

We consistently upgrade our workstations and entire computer network, and our technical staff use the latest in engineering, project management, surveying, and financial management software. EPS Group is a locally-owned corporation, where an entrepreneurial spirit of quality, collaboration, and customer care flourishes throughout the firm. We understand that our performance on your



project impacts our future success with the Town of Eagar. EPS Group has a long track record of submitting high quality deliverables, on time and under budget. This is due to successful project planning, management, and execution. We understand the utmost importance of meeting established project schedule, agreed upon project budget, and work quality standards in order to satisfy client expectations. EPS Group has established project management procedures that address each of these three elements.

#### ▶ Adherence to Schedule

Managing and scheduling dozens of office and field staff on multiple complex projects over varying time frames requires well-implemented procedures, including the following:

**Periodic Planning Meetings** – At least once a week, Greg Froehlich meets with his project managers to discuss backlog, current deadlines and workload, equipment and personnel resource availability, and potential conflicts. The results of these meetings are represented in a database accessible by staff.

**Innovative Personnel Management Strategies** – EPS Group uses state-of-the-art technologies in nearly every aspect of our work, including field and office staff scheduling. A single web-based calendar representing committed resources allows an at-a-glance or detailed department-wide review of current personnel utilization and availability.

#### ▶ Utility Coordination

Responsive utility coordination is key to achieving client satisfaction, particularly when installing underground pipelines in established streets. We know that poorly executed utility coordination can quickly derail a project's schedule and budget. Historically, there have been significant challenges associated with the locating, and where required, the timely relocation of utilities in conjunction with major public works projects. If these challenges are not sufficiently met, the resulting problems can lead to project design and/or construction delays and increased project costs.

EPS Group has extensive experience with utility coordination on public works projects, and we have an established Utility Coordination Process that will ensure your complete satisfaction. [We know Eagar's local utility providers, and have recently coordinated with them on the Alta Vista Drive project in your town.](#)

#### ▶ Cost Control Procedures

As appropriate, the project team will utilize the Work Breakdown Structure concept to subdivide a project into manageable elements. Our budgeting/scheduling software provides the systems for budget control and reporting, including direct ties to current financial information. It provides Earned Value, graphic budget vs. actual comparisons, and other cost and budget monitoring tools. Projects receive regular periodic



reviews by firm management to ensure budgets and schedules are being met, and the client requirements and needs are being satisfied.

Our management team will monitor the budget throughout the planning/design process. We will communicate with your assigned Project Manager if any concerns or cost variances develop so we may address these early and recommend changes to meet the budget. EPS Group continually monitors the project progress versus project budget to ensure the project is completed within the agreed upon fee. We have an excellent history in managing the project fee and in change order avoidance.

**EPS Group is committed to delivering The Town of Eagar successful projects – no matter what challenges arise.**

► **Quality Assurance Program**

Because EPS Group is employee-owned, we take quality seriously. Quality at EPS Group means the plan sets are complete with all parts, pieces, and details. Plans are developed to be easily followed by the contractor, and they receive reviews from our highly-experienced construction surveyors to ensure construction layout efficiency. Clean, quality plans better ensure clean, quality construction.

With EPS Group, quality control starts at project inception and continues through to completion. It employs more than adherence to a quality control plan; the project receives a thorough review before each submittal, examining not only the accuracy but also the engineering assumptions, alternatives, and decisions made. Our quality approach includes a review of the site characteristics and the proposed design's conformance with existing conditions.

Every EPS Group-managed project conforms to the requirements of the firm's Quality Assurance Program, which outlines the responsibilities and procedures – including checking, back-checking, and reviewing procedures. Our quality reviews of reports, designs, and drafting are performed by senior technical experts who continually communicate with the Task Manager to ensure design documents are clear and represent sound engineering.

A project-specific Quality Control Plan will be developed that outlines the specific team member roles, responsibilities, and the schedules for each project element. The EPS Group QA/QC officer will monitor the program. We have standard checklists to complement each stage of deliverables.

As items or tasks are completed, the person completing the task will review the work by answering the following questions:

- Has everything been done?
- Is the task complete?
- Has all of the information been shown?
- Is the information shown correct?
- Does it conform to the requirements?
- Is it consistent with other information?

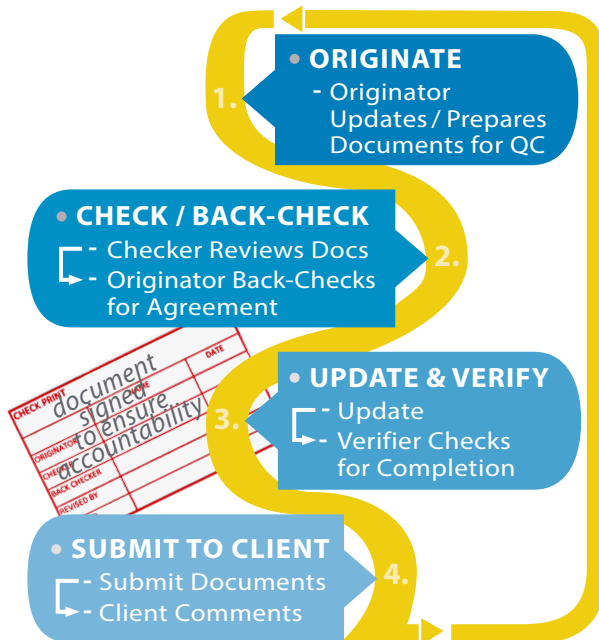
Only after this self-check has been accomplished will the work product be released to others. The next step is to have someone else, preferably the person requesting the work, check the product using the same questions from above.

Finally, and prior to formal submittal to the Town, the plan documents will be reviewed by the Project Principal, Greg Froehlich. The documents will be submitted to the Town only after approval by Greg.

*Responsiveness to Owner's Concerns*

EPS Group Project Manager Bryan Martin will be your primary, key contact. As illustrated throughout this statement of qualifications, we have the necessary, experienced resources to be responsive to any needs that may arise while completing a task assigned through this contract. As the largest locally-owned civil engineering firm in Arizona, we can respond to any needs in a timely matter.

**EPS Group QA/QC Process**



*This figure demonstrates the work flow of EPS Group's quality process, which begins 14 days before scheduled submittals. The checker is a staff member with expertise in the specific discipline being reviewed. When the process is completed, these documents are scanned and archived.*

### 3. References for Municipal Clients

#### City of Globe

**Luis Chavez**, Chief Engineer

150 N. Pine Street, Globe, AZ 85501

lchavez@globeaz.gov | 928.940.3639

current project: **Pinal Creek Bridge and Road Replacement**

dates of services: April 2020 to December 2021 (design)

##### other projects for City of Globe:

US 60 Water Main Replacement

CAG 208 Amendment

#### City of Maricopa

**Ross Renner**, Project Manager

39700 W. Civic Center Plaza, Maricopa, AZ 85138

ross.renner@maricopa-az.gov | 520.316.6952

current project: **Sonoran Desert Parkway, Phase Two**

dates of services: January 2023 to (design is ongoing)

##### other projects for City of Maricopa:

East-West Corridor (Sonoran Desert Parkway, Phase One),

SR 347 to Porter Road

(ADOT) SR 347, Union Pacific Railroad (UPRR) Overpass

SR 347 UPRR Pedestrian Bridge

Edison Road Extension

White & Parker Major Investment Study (MIS)

#### Town of Gilbert

**Ryan Blair**, Project CIP Supervisor (Eagar native)

90 E. Civic Center Drive, Gilbert, AZ 85296

ryan.blair@gilbertaz.gov | 480.503.6906

current project: **Appleby and 148th Street Improvements**

dates of services: April 2023 to (design is ongoing)

##### other projects for Town of Gilbert:

Ocotillo Road: 148th to Greenfield

Gilbert and Guadalupe Intersection Improvements

Lindsay Road: Pecos Road to SR 202

SR 202, Lindsay Road Traffic Interchange (*consulting engineer*)

Ocotillo Road: Greenfield to Higley (*consulting engineer*)

*consulting engineer*

Val Vista Drive: Germann to Queen Creek

164th Street, Road Paving and Drainage Design

Desert Lane Drainage Improvements

Recker Road and Somerton (Cooley Loop South), Traffic Signal

Civic Center Parking, Scoping Study

East Downtown / Elm Street, Circulation Study

Heliae Site Grading

## B. Engineering Organization / Local Office Technical Qualifications

### 1. Firm Organization and Structure

EPS Group is a locally owned and operated corporation, formed in Arizona on June 5, 2003, with a staff of 280. The company is in “Good Standing” with the Arizona Corporation Commission. EPS Group is a locally-owned and operated company, and has three Arizona offices: the headquarter office in Mesa, North Phoenix, and Tucson. Our newest branch office, located in Loveland, Colorado, opened in 2021. The company is privately owned and governed by a board of directors comprised of the CEO, CFO, and eight Principals.

### 2. Address of Local Office Providing Services

The principal office from which EPS Group will perform all assigned task services:

- Mesa (headquarters) – 1130 N. Alma School Road, Suite 120, Mesa, AZ 85201  
Arizona State Board of Technical Registration No. 11727-0

EPS Group proposed staff are registered in Arizona, either in Civil Engineering, Landscape Architecture, or Land Survey.

### 3. Key Personnel Proposed to Perform Specified Tasks, and Sub-consultant Work

The organizational chart on this page shows how the EPS Group team is well staffed and capable of providing the Town of Eagar with excellent and responsive service. Our proposed team members offer superior knowledge, expertise, and ready availability to complete any assigned task within schedule and budget.

Full resumes can be found in the Appendix.

### Greg Froehlich, PE

TIME WITH EPS GROUP: 17 years  
REGISTRATION: Arizona PE # 37285 (civil)  
EDUCATION: Arizona State University



ROLE: **Project Principal / Contract Manager**

Greg has 26 years of experience in the design and construction of civil engineering projects for municipal, county, and state clients. This includes roadways, intersections, site development and utilities design, cost estimating, and construction observation. As Project Principal, Greg will ensure the Town has the EPS Group resources it needs to complete the project. Greg’s responsiveness

to client needs, along with his knowledge of municipal project design, has proven his ability to meet scope, schedule and budget, as well as project requirements.

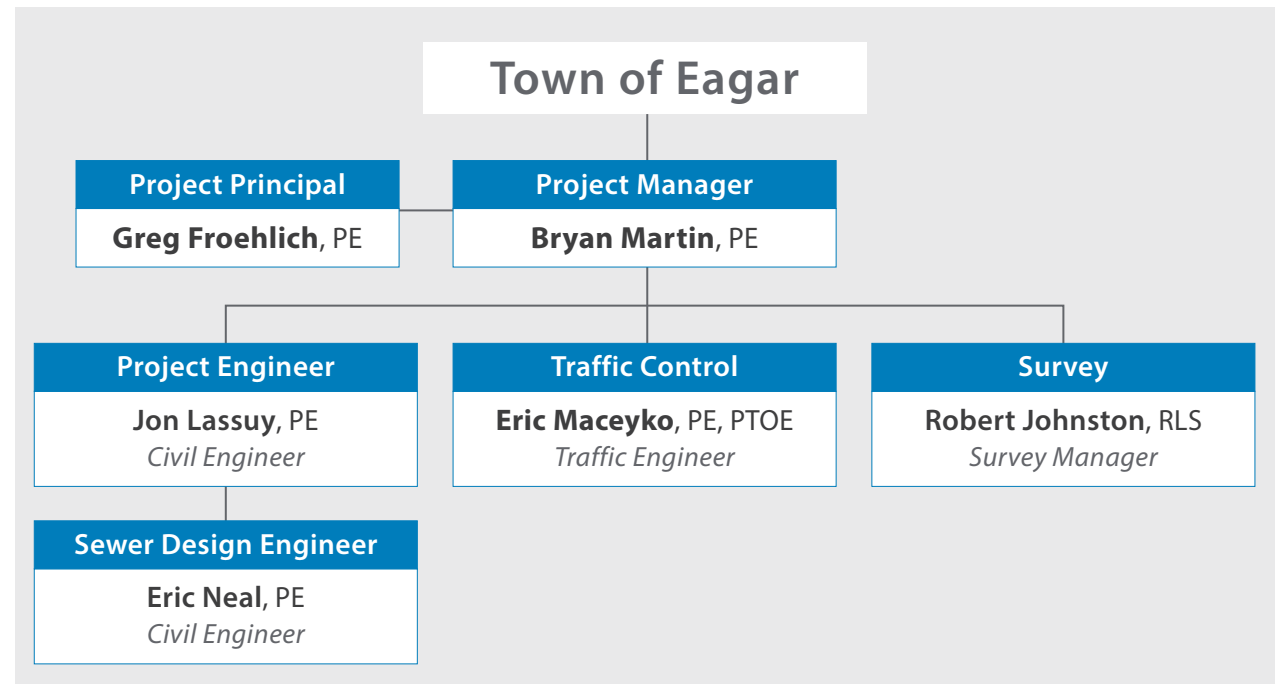
### Bryan Martin, PE

TIME WITH EPS GROUP: 13 years  
REGISTRATION: Arizona PE # 58920 (civil)  
EDUCATION: BSCE – Arizona State University



ROLE: **Project Manager**

Bryan grew up in Eagar, and his family still lives in town. He has more than 13 years of transportation design experience, including roadway design for



urban and rural highways, intersection design, ADA compliance, and traffic impact studies for municipalities across Arizona. Bryan’s past work has helped him develop designs utilizing AutoCAD, Microstation, and InRoads. His attention to detail and understanding of the interactions between roadway, bicycle, pedestrian, and ADA design parameters gives his clients confidence that each mode of travel is accommodated.

### Jon Lassuy, PE

TIME WITH EPS GROUP: 18 years  
 REGISTRATION: Arizona PE # 49457 (civil)  
 EDUCATION: BSCE – Arizona State University



**ROLE: Project Engineer**

Jon has extensive project engineering experience for municipalities across Arizona. He is detail oriented, without losing sight of the big picture. Jon’s efficiency and responsiveness are only matched by his determination to produce a high-quality product. His experience includes a diverse range of project types: design for arterial streets and intersections, water and sewer, storm drain and hydrology, and earthwork modeling and ADA compliance. He routinely coordinates with municipalities, government agencies, and co-consultants.

### Eric Neal, PE

TIME WITH EPS GROUP: 6 years  
 REGISTRATION: Arizona PE #35482 (civil)  
 EDUCATION: BSCE – University of Wyoming



**ROLE: Sewer Design Engineer**

Eric’s 30 years of engineering design experience ranges across a variety of geographical regions nationally and abroad. On the public sector side, Eric has worked with clients at all levels of government. His project experience includes sanitary sewer and storm sewers; potable water hydrogeology, storage, treatment, and transmission; landfill design and permitting; roadway and trail design; geographic information system (GIS) mapping; and construction management and inspection services.

### Eric Maceyko, PE, PTOE

TIME WITH EPS GROUP: 11.5 years  
 REGISTRATION: Arizona PE #42629 (civil);  
 PTOE #2105  
 EDUCATION: BSCE – Arizona State University



**ROLE: Traffic Engineer**

Eric has more than 22 years of traffic engineering experience, with a focus on traffic impact studies, signal design, parking studies, transportation planning, traffic signal analysis, and traffic design projects. Through this range of work, Eric has developed his project management, design, and technical skills. He has gained valuable experience working with numerous Arizona municipalities and counties, as well as the Arizona Department of Transportation.

### Robert Johnston, RLS

TIME WITH EPS GROUP: 5 years  
 REGISTRATION: Arizona RLS #37495 (survey)  
 EDUCATION: Assoc. in Arch. – High-Tech Inst.



**ROLE: Survey Manager**

Robert has more than 31 years of surveying experience, both in field operations and in the office. He understands the importance of accuracy, precision, and proper project management. Robert’s experience in all aspects of survey work includes ALTA/ACSM land title surveys, maps of dedication, topography surveys, data analysis, construction staking, and field crew preparations. He has significant experience as a project manager responsible for public projects, residential subdivision and commercial developments, working directly with and on behalf of the client.

## C. Engineering Fee

### FEE SCHEDULE – Town of Eagar Sewer Project Highway 180/191

| Task   | Fee                 |
|--|---------------------|
| Survey   |                     |
| Right-of-Way Mapping                           | \$ 3,510.00         |
| Topographic Survey                             | \$ 5,960.00         |
| Utility Mapping                                | \$ 1,500.00         |
| Sewer  |                     |
| Sewer Analysis & Report                        | \$ 3,070.00         |
| 60% Sewer Plans                                | \$ 7,000.00         |
| 100% Sewer Plans                               | \$ 4,605.00         |
| Special Provisions                             | \$ 1,080.00         |
| Design Quantities & Cost Estimates (60%, 100%) | \$ 2,260.00         |
| Miscellaneous                                  |                     |
| ADEQ Submittal and Coordination                | \$ 910.00           |
| Pothole Identification and Layout              | \$ 405.00           |
| Meetings and Coordination                      | \$ 1,550.00         |
| <b>TOTAL FEES</b>                              | <b>\$ 31,850.00</b> |



## Greg Froehlich, PE

Project Principal / Contract Manager

Greg has more than 26 years of experience in the design and construction of municipal, county, and state projects. His expertise includes rural and urban roadway and infrastructure design, storm drain design and hydrology, cost estimating, and bridge and structure construction inspection. He is consistently engaged in the concept and design innovations that have become typical in EPS Group-led projects, and he constantly challenges the thinking of those around him to develop the most constructible and cost effective designs possible. As Project Principal, Greg will ensure the Town of Thatcher has the EPS Group resources it needs to complete each assigned task.

### Education

Bachelor of Science,  
Civil Engineering,  
Arizona State University

### Registration

Registered Professional  
Engineer (Civil),  
Arizona #37285

### Time with EPS Group

17 years

### Total Experience

26 years

### Select Experience

- Arizona Department of Transportation  
Idaho Road, Superstition Boulevard to McKellips |  
Apache Junction, AZ  
Old West Highway Improvements | Apache Junction, AZ  
Marsh: Russell to Midway & Russell: Marsh to Arica |  
Stanfield, AZ  
Russell Road, I-8 to SR 84 and Arica to I-84 | Stanfield, AZ  
Stadium Trail, 73rd Avenue to 83rd Avenue | Peoria, AZ  
SR 77, Town of Taylor to Rodeo Road | Snowflake, AZ  
SR 95, 7th Street to Aviation Way | Bullhead City, AZ  
SR 95, Corridor Study | Lake Havasu area, AZ  
SR 347, UPRR Overpass DCR & Final Design | Maricopa, AZ  
US 60X, Sossaman Road to Meridian Drive | Mesa, AZ  
US 89 & N Lake Powell Boulevard | Page, AZ  
US 191, Segment V Design-Build | Safford, AZ  
I-40 / US 93, West Kingman Traffic Interchange  
DCR and Interim Improvements | Kingman, AZ  
I-40 / US 191, Sanders Traffic Interchange | Sanders, AZ  
I-40, Lupton Traffic Interchange DCR | Lupton, AZ  
I-40, Joseph City Pavement Preservation | Joseph City, AZ
- Town of Eagar | On-Call Engineering Services | Eagar, AZ
- City of Casa Grande | Cottonwood Lane Improvements |  
Casa Grande, AZ
- City of Maricopa | Maricopa, AZ  
East-West Corridor, SR 347 to Porter Road  
Edison Road Extension
- Gila River Indian Community | Komatke Lane, New Loop 202  
(South Mountain Freeway) Connection | Laveen, AZ
- Tohono O'odham Nation | Gu Vo Loop Road | Gu Vo, AZ
- Maricopa County Department of Transportation  
Southern Avenue: 51st Ave. to 37th Lane | Phoenix, AZ  
Broadway Road: 75th Ave. to 51st Ave. SDR | Phoenix, AZ  
Vulture Mountain Recreation Area, Access Roads |  
Wickenburg, AZ  
Peak View Road, Low Volume Road SDR | Wittmann, AZ  
HIPR McDowell Mountain Road SDR | Fountain Hills, AZ  
MASH Guardrail Evaluation (NW Area), Phase 1 |  
Maricopa County, AZ  
Wintersburg Parkway Corridor Feasibility Study |  
Buckeye area, AZ  
Signal Butte Rd. Corridor Study | Mesa & Queen Creek, AZ
- Town of Gilbert | Gilbert, AZ  
Lindsay Road Improvements: Pecos Road to SR 202  
Gilbert and Guadalupe Intersection Improvements
- Town of Queen Creek | Queen Creek, AZ  
Ocotillo Road Improvements: Signal Butte to Ironwood  
Riggs Road Design
- City of Peoria | Peoria, AZ  
83rd Avenue Widening  
Agua Fria Truck Route, Study and Design
- Valley Metro | Gilbert Road Light Rail Extension | Mesa, AZ





## Bryan Martin, PE

Project Manager

Bryan grew up in Eagar, and his family still lives in town. He has more than 13 years of design experience for municipalities across Arizona, all of it at EPS Group. His past work on dozens of rural and urban transportation projects has helped him develop solid plan preparation and roadway design skills utilizing MicroStation, InRoads and AutoCAD. He has also completed a variety of traffic impact and parking studies using Synchro and SimTraffic. Bryan's attention to detail and understanding of the interactions between roadway, bicycle, pedestrian, and ADA design parameters gives our clients confidence that each mode of travel is accommodated.

### Education

Bachelor of Science,  
Civil Engineering,  
Arizona State University

### Registration

Registered Professional  
Engineer (Civil),  
Arizona # 58920

Professional Traffic  
Operations Engineer  
(PTOE) # 4845

### Time with EPS Group

13 years

### Total Experience

13 years

### Select Experience

- Town of Eagar | Eagar, AZ
  - Main Street Sewer and Pavement Rehabilitation
  - Alta Vista Drive, Roadway Design Services
  - Butler Street: 8th Street to SR 260 Roadway Reconstruction
  - Main Street: School Bus Rd. to 4th St. Pavement Preservation
- Town of Springerville | East and West Lift Stations Evaluations | Springerville, AZ
- City of Globe | Pinal Creek Road & Bridge Replacement | Globe, AZ
- Pinal County Public Works Department | Hopi Drive Drainage Study and Design | Casa Grande, AZ
- Town of Florence | Florence Gardens Transmission Main, Phases IV and V | Florence, AZ
- City of Maricopa | Maricopa, AZ
  - Edison Road Extension
  - East-West Corridor, SR 347 to Porter Road
- Arizona Department of Transportation, On-Call Services
  - Russell Road: I-8 to SR 84 | Stanfield, AZ
  - Stadium Trail: 73rd Avenue to 83rd Avenue
  - SR 77, Town of Taylor to Rodeo Road | Snowflake, AZ
  - SR 95, 7th Street to Aviation Way | Bullhead City, AZ
  - SR 347, UPRR Overpass DCR & Final Design | Maricopa, AZ
  - US 60X, Sossaman Road to Meridian Drive | Mesa, AZ
  - I-40 / US 93, West Kingman Traffic Interchange | Kingman, AZ
  - I-40, Joseph City Pavement Preservation | Joseph City, AZ
  - I-40, Lupton Traffic Interchange DCR | Lupton, AZ
  - I-40, Rockfall Containment | Holbrook, AZ
- Gila River Indian Community | Komatke Lane, New Loop 202 (South Mountain Freeway) Connection | Laveen, AZ
- Tohono O'odham Nation | Gu Vo Loop Road | Gu Vo, AZ
- Town of Queen Creek | Ocotillo Road Improvements: Recker Road to Power Road | Queen Creek, AZ
- Town of Gilbert | Gilbert, AZ
  - Lindsay Road, SR 202 Traffic Interchange
  - Gilbert and Guadalupe Intersection Improvements
- Maricopa County Department of Transportation
  - Southern Avenue: 51st Ave. to 37th Lane | Phoenix, AZ
  - Broadway Road: 75th Ave. to 51st Ave. SDR | Phoenix, AZ
  - Jackrabbit Small Area Transportation Study | Surprise, AZ
  - Signal Butte Rd. Corridor Study | Mesa & Queen Creek, AZ
  - Wintersburg and Hidden Waters Corridor Studies | Maricopa County, AZ
  - New River Road Safety Studies | New River, AZ
  - Tonto Hills, Low Volume Roads Candidate Assessment Report (CAR) | Near Scottsdale, AZ
  - HIPR New River Area SDR & Final Design | New River, AZ
  - Peak View Road, Low Volume Road Analysis SDR | Wittmann, AZ
  - Estrella Mountain Reg'l Park, Master Plan | Goodyear, AZ
  - Vulture Mountain Recreation Area, Access Roads | Wickenburg, AZ
  - Maricopa County Parks, Road Standards
- Valley Metro | Gilbert Road Light Rail Extension | Mesa, AZ





## Jon Lassuy, PE

Project Engineer

Jon has extensive project engineering experience for municipalities across Central Arizona. He is detail oriented, without losing sight of the big picture. Jon's efficiency and responsiveness are only matched by his determination to produce a high-quality product. His experience includes a diverse range of project types: design for arterial streets and intersections, water and sewer, storm drain and hydrology, along with earthwork modeling and ADA compliance. He routinely coordinates with municipalities, government agencies, clients and co-consultants.

### Education

Bachelor of Science,  
Civil Engineering,  
Arizona State University

### Registration

Registered Professional  
Engineer (Civil),  
Arizona # 49457

### Time with EPS Group

18 years

### Total Experience

18 years

### Select Experience

- Town of Eagar | Main Street Sewer and Pavement Rehabilitation | Eagar, AZ
- Town of Florence, On-Call Engineering | Florence, AZ
  - Well #4 to Well #5 Transmission Main
  - SR 79 Waterline
  - Florence Gardens Transmission Main, Phases IV and V
- Salt River Pima-Maricopa Indian Community – Victory Acres, Infrastructure Reconstruction | Scottsdale, AZ
- Arizona Department of Transportation | Union Pacific Railroad (UPRR) Overpass, DCR and Final Design | Maricopa, AZ
- City of Maricopa | Maricopa, AZ
  - Edison Road Extension
  - White & Parker Major Investment Study (MIS)
- Town of Gilbert | Gilbert, AZ
  - Appleby and 148th Street Improvements
  - Ocotillo Road: 148th Street Greenfield Road
  - Ocotillo Road: Greenfield Road to Higley Road
  - Lindsay Road Improvements: Pecos Road to SR 202
  - Gilbert and Guadalupe Intersection Improvements
  - Val Vista Drive Improvements: Queen Creek to Germann
- City of El Mirage | El Mirage, AZ
  - Dysart Road Improvements: Northern to Peoria
  - Dysart Road: 12-inch Waterline Design
- Town of Queen Creek | Queen Creek, AZ
  - Wastewater and Water On-Call Services
  - Cloud Road Sewer Extension, 214th Street to Rittenhouse Road
  - Ocotillo Road Improvements: Signal Butte Road to Ironwood
  - Ocotillo Road Improvements: Recker Road to Power Road
  - Signal Butte Road: Appleby to 1100' North
- City of Mesa | Mesa, AZ
  - Signal Butte Water Treatment Plant
  - Compressed Natural Gas (CNG) Facilities at 6th Street Service Center
  - Power Road and Rittenhouse Gas Gate Station 3
  - Val Vista Pipeline to City Reservoirs Transmission Main Study
  - McKellips Road 30-inch Water Main
  - Recker Road 42-inch and 16-inch Reclaimed Waterlines
  - Southern Avenue & Stapley Drive Intersection Design
- Global Water Resources
  - Project Go West | Maricopa, AZ
  - Pinal Farms Service Area | Pinal County, AZ
- Valley Metro | Gilbert Road Light Rail Extension | Mesa, AZ
- Maricopa County Department of Transportation
  - Palm Lane Waterline Relocations | Mesa, AZ
  - Southern Avenue: 51st Ave. to 37th Lane | Phoenix, AZ
  - Northern Parkway: El Mirage Access Roads | El Mirage, AZ







## Eric Neal, PE

Sewer Design Engineer

Eric's areas of expertise ranges across a variety of geographical regions, and includes both private and public development projects. In the public sector, he has extensive experience at all levels of government, having worked with numerous municipalities throughout Arizona, Utah, and Nevada. Eric's experience includes sanitary sewer and storm sewers; potable water hydro-geology, storage, treatment, and transmission; landfill design and permitting; roadway and trail design; geographic information system (GIS) mapping; and construction management and inspection services. He has also provided consulting services on a multitude of infrastructure projects.

### Education

Bachelor of Science,  
Civil Engineering,  
University of Wyoming

### Registration

Registered Professional  
Engineer (Civil), Arizona  
#35482

### Time with EPS Group

6 years

### Total Experience

30 years

### Select Experience

- Town of Chino Valley | Perkinsville Road, Sewer and Water Extension | Chino Valley, AZ
- Arizona Department of Administration (ADOA) / State Parks & Trails | On-Call Civil Engineering Services
  - Lake Havasu State Park – RV Sewer Connections
  - Kartchner Caverns –Sewer and Water Improvements
  - Alamo Lake – Sewer and Water Improvement
  - Buckskin Mountain State Park – Sewer and Water Improvements
  - River Island State Park – Sewer and Water Improvements
- City of Litchfield Park | Litchfield Square at City Center Infrastructure | Litchfield Park, AZ
- Town of Wickenburg | Wickenburg, AZ
  - Downtown Sewer and Water Rehabilitation
  - Aztec Sewer Lift Station Rehabilitation\*
  - Calamity Sewer Lift Station\*
  - Ocotillo Road Civil Improvements\*
- Town of Gilbert | Lindsay Road Improvements: Pecos Road to SR 202 | Gilbert, AZ
- Phoenix Area Indian Health Service | Whiteriver Indian Hospital Replacement, Site Assessment | Whiteriver, AZ
- Arizona Department of Transportation\*
  - On-Call Mapping Contract | Statewide, AZ
  - Vulture Mine Road DCR | Wickenburg, AZ
  - Vulture Mine Road Construction Plans | Wickenburg, AZ
- U.S. Army Corps of Engineers, Luke Air Force Base | Glendale, AZ
  - Sanitary Sewer Mains / Laterals Replacement
  - Luke Air Force Base | F-35 Bomb Build-Up Facility\*
- City of Surprise | Surprise, AZ
  - Peoria Avenue, Street Flooding Mitigation Projects
  - Paradise Lane Roadway and Drainage Improvements\*
  - Original Town Site Area Drainage Master Study / Plan\*
  - Original Town Site Locations 1 & 2 Drainage Improvements\*
  - Original Town Site Drainage Improv., Construction Docs\*
  - Litchfield Road and Peoria Avenue Drainage Study\*
  - Litchfield and Railroad Drainage Study\*
  - Civil Inspections Contract\*
  - Engineering Development Process Manual\*
- National Park Service
  - Glen Canyon National Recreation Area, Wahweap Utility Locating and Mapping | Page, AZ
  - Amistad National Recreation Area, Replacement of Failing Septic Tanks | Del Rio, TX
  - Saguaro National Park West, Waterline Ph. 1 & 2 | Tucson, AZ
  - Coronado National Memorial, Sewer Lift Station | Sierra Vista, AZ
  - Tonto Nat'l Monument, Waterline Replacement | Roosevelt, AZ
  - Tuzigoot National Monument, Tavasci Marsh Trail Bridge Replacement | Clarkdale, AZ

\* work performed prior to joining EPS Group





## Eric Maceyko, PE, PTOE

Traffic Engineer

Eric has more than 22 years of experience in traffic engineering. His expertise focuses primarily on traffic impact studies, traffic signal design, parking studies, round-about analysis, transportation planning, traffic signal analysis and traffic design projects. Through this range of work, Eric has developed his project management, design and technical skills. He has gained valuable experience working with numerous Arizona municipalities and counties, as well as the Arizona Department of Transportation.

### Education

Bachelor of Science,  
Civil Engineering,  
Arizona State University

### Registration

Registered Professional  
Engineer (Civil),  
Arizona # 42629

Professional Traffic  
Operations Engineer  
(PTOE) # 2105

### Time with EPS Group

11.5 years

### Total Experience

22 years

### Select Experience

- City of Globe | Globe, AZ
  - Pinal Creek Roadway and Bridge Replacement
  - US 60 Water Main Replacement
- City of Maricopa | Maricopa, AZ
  - East-West Corridor, SR 347 to Porter Road
  - Edison Road Extension
- Town of Queen Creek | Queen Creek, AZ
  - Ocotillo Road Improvements: Signal Butte Road to Ironwood Road, Traffic Analysis and Signal Design
  - Ocotillo Road Improvements: Recker Road to Power Road
- Town of Gilbert | Gilbert, AZ
  - Lindsay Road Improvements: Pecos Road to SR 202
  - Recker Road and Somerton, Traffic Signal
  - Gilbert and Guadalupe Intersection Improvements
- City of El Mirage | El Mirage, AZ
  - Flashing Yellow Arrow, City-Wide Retrofit
  - Dysart Road, Traffic Analysis and Signals Design
- Maricopa County Department of Transportation
  - Vulture Mountains Recreation Area, Access Roads | Wickenburg, AZ
  - New River Road Safety Studies | New River, AZ
  - Northern Parkway: El Mirage Access Roads | El Mirage, AZ
  - Broadway Road: 75th Ave. to 51st Ave. SDR | Phoenix, AZ
- Arizona Department of Transportation
  - SR 77, Town of Taylor to Rodeo Road | Snowflake, AZ
  - SR 347, UPRR Overpass DCR & Final Design | Maricopa, AZ
  - US 60, Silver King to Superior Traffic Control Plans | Superior, AZ
  - US 191, Signing and Striping Plan | Various, AZ
  - US 60, Stapley Drive Traffic Interchange | Mesa, AZ
  - I-40 / US 93, West Kingman Traffic Interchange | Kingman, AZ
- Maricopa Association of Governments
  - 59th Avenue & Northern Avenue | Glendale, AZ
  - I-17 & Thunderbird Road | Phoenix, AZ
  - 27th Avenue and Indian School Road | Phoenix, AZ
  - Hardy Drive and Baseline Road | Tempe, AZ
  - Scottsdale Road and Thomas Road | Scottsdale, AZ
- City of Litchfield Park | Litchfield Square, Roundabouts and Street Improvements | Litchfield Park, AZ
- City of Phoenix | Roosevelt Row Operations | Phoenix, AZ
- City of Tucson, Pima County & RTA | Valencia Road / Kolb Road Intersection | Tucson, AZ
- DMB Associates | Pima and Legacy Parking Analysis | Scottsdale, AZ
- Case, Huff & Associates | Shops at Dynamite Creek Parking Analysis | Phoenix, AZ





## Robert Johnston, RLS

Survey Manager

Robert has more than 31 years of surveying experience both in field operations and in the office. He understands the importance of accuracy, precision and proper project management. Robert's experience in all aspects of survey work includes ALTA/ACSM land title surveys, maps of dedication, topography surveys, data analysis, construction staking, and field crew preparations. He has significant experience as a project manager responsible for public projects, residential subdivision and commercial developments, working directly with and on behalf of the client.

### Education

Associate degree in Architecture, High-Tech Institute

### Registration

Registered Land Surveyor, Arizona # 37495

### Affiliations

Arizona Professional Land Surveyors (APLS)  
National Society of Professional Surveyors (NSPS)

### Time with EPS Group

5 years

### Total Experience

31 years

### Select Experience

- U.S. Army Corps of Engineers | Luke Air Force Base, Sanitary Sewer Mains / Laterals Replacement | Glendale, AZ
- National Park Service | Glen Canyon National Recreation Area, Wahweap Utility Locating and Mapping | Page, AZ
- Arizona Department of Transportation  
District Materials Lab | Kingman, AZ  
SR-101 HOV Improvements (SR202 to Tatum)  
Construction Staking | Scottsdale, AZ\*  
ADOT SR-202 HOV Improvements (SR-101 to Gilbert Rd) –  
Survey Manager, Construction Staking | Mesa, AZ\*
- Navajo Health Foundation | Sage Memorial Hospital  
Expansion | Ganado, AZ
- Gila River Indian Community  
Komatke Lane, New SR 202 (South Mountain Freeway)  
Connection | Laveen, AZ  
Vee Quiva Casino – Pylon Sign | Laveen, AZ  
Gas Station Development, Vee Quiva Way and  
Komatke Lane | Laveen, AZ  
Casa Blanca Schools – Existing and Proposed School Sites
- City of Maricopa | Maricopa, AZ  
East-West Corridor (Sonoran Desert Parkway, Phase 1):  
SR 347 to Porter Road  
Edison Road Extension
- BHP | Solitude Tailings Mine Survey | Globe, AZ
- Diamond Care Health Network – Casa Grande Skilled Nursing Facility | Casa Grande, AZ
- Beatitudes | Senior Living Campus Expansion | Phoenix, AZ
- Dignity Health | St. Joseph's Hospital and Medical Center – Third Avenue Medical Office Building | Phoenix, AZ
- National Cardiovascular Management | Akos Medical Office Building Campus | Avondale, AZ
- City of Mesa | Mesa, AZ  
Red Mountain Shared-Use Path: Loop 202, Power Road to North City Limit  
Central Mesa Reuse Pipeline
- Mesa Public Schools | Mesa High School Renovations | Mesa, AZ
- Creighton School District | Creighton Elementary, New Classroom Buildings | Phoenix, AZ
- Brayden Management | Verrado East District, Commercial Center | Buckeye, AZ
- Pinal Land Holdings | ALTA Surveys for 86 parcels | Coolidge / Eloy, AZ\*
- Williams Gateway Airport | Facility Aerial Photography and Mapping | Mesa, AZ\*
- Intel | FAB22 – Survey | Chandler, AZ\*

*\* work performed prior to joining EPS Group*

