



340 1st Avenue East, Dyersville, Iowa 52040 • Phone: 563-875-7724 • Fax: 563-875-8238

www.cityofdyersville.com

To: Mayor Jacque and City Council Members
Cc: Mick Michel, City Administrator
From: John F. Wandsnider, PE – Public Works Director/City Engineer
Date: January 13, 2025
Subject: Public Works Report: January 14 – February 12, 2025

Things have been operating well over the last month or so in Public Works.

Operation and Maintenance of Fleet, Highways, Streets, Alleys, Parks, Trails, Rivers, Creeks, etc.

The streets and fleets arm of Public Works is doing an excellent job with normal winter activities in the operations and maintenance of Dyersville's pavement and drainage systems and equipment. Until this week, it has been a pretty calm winter, on average. We estimate we had about 5 inches on Wednesday and anticipate another 3-6" over Friday and Saturday - we are ready for it. Of the 500 tons of salt planned for, we estimate that we have used about 200 tons, to-date. As time and conditions allow, we have been filling put holes and repairing and maintaining equipment.

The repairs to the street sweeper have been completed.

Operation and Maintenance of Drinking Water Delivery and Wastewater Disposal Systems

The drinking water source, storage, treatment, and distribution systems are serving the city well. The wastewater collection, pumping, treatment, and disposal systems are also operating well. Please refer to the Water and Wastewater reports for January, below.

Improvement and Expansion Projects

3rs Avenue S Bridge Replacement (added 2/25)

The City is applying for a grant through the Iowa DOT to replace this bridge. The City Engineer, with assistance from WHKS, has been assembling the necessary information and documents, responding to the various questionnaires, and meeting with the DOT, to complete the application process. (see info. elsewhere in the packet).

Field of Dreams Movie Site Roadway (added 11/24)

Project is out for bids, to be received February 25.

Castle Hill – 4th Addition (added 7/24)

Project is substantially complete.

Lake View Estates (added 7/24)

The utilities and the paving have been completed within the subdivision. The sanitary sewer extension across other private property has yet to be installed. This is expected to be completed by Spring. The developer's engineer has maintained a presence on the site when appropriate to help to ensure a quality product.

1st Avenue West - Old Highway Road - Improvement (Added 2/24)

Meeting with Street Committee is scheduled for Wednesday.

Downtown Streetscape Rehabilitation (Added 4/23)

The contractor returned to finish the improvements and clean things up. We are planning to finish the east side of the river in FY-25, and the west side on FY-26.

Hwy 52 Manhole Replacement at 2nd Avenue (Added 11/21)

Plan is for work to be done in May, 2025.

Downtown Businesses Accessibility – (Added June, 2021)

We met with the owners of DFR and The Ritz and presented the design. They were both very supportive. Plans are being finalized.

20 West Industrial Park, Phase III Rise Grant App. (Added August, 2022)

Paving has been complete. Street lights have been installed. Project is substantially complete.

Field of Dreams Stormwater Wetland and Mitigation (Added to list in April, 2020)

A map showing areas requiring attention has been prepared by the engineer. Work is expected this fall. A live streaming camera of the site is available for viewing at: <https://video.nest.com/live/G4AGPm8tkR>

Dyersville East Road Water and Sewer Extension 2020 (Added to list March, 2020)

Substantial completion has been issued for the Contract E Water and Sewer project.

- END -

Memorandum

To: Mayor, City Council Members and City Administrator
From: Terry Recker, Water Operator
Date: February 7th, 2025
Subject: **Water Operation January 2025 Report**

Water Pumped

Total Water Pumped for Month	12,550,000 Gallons
Average Pumped per Day	405,000 Gallons
Maximum Daily Pumped	605,000 Gallons

Chlorine Testing

Average Free Chlorine in the System –	1.80 mg/l
Average total Chlorine in the System -	1.88 mg/l

Polyphosphate

Average Residual at Well #4	1.25 mg/l
--------------------------------	-----------

Water Call Outs

2 for the month
Total for the year – 2

Water Main Breaks

1 for the month
Total for the year – 1

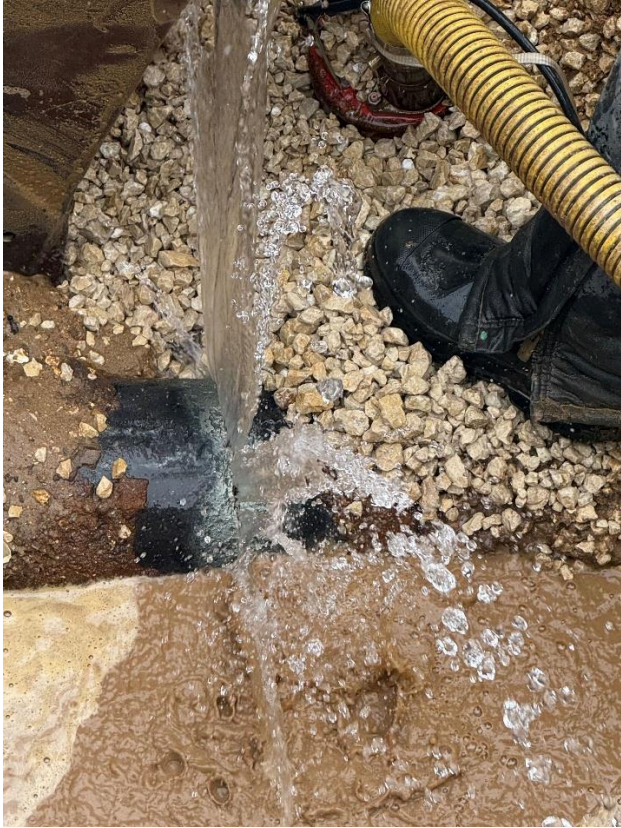
Water Activities

22- Line Locates Completed
40- Water Work Orders Completed

Operations and Maintenance

Bacteria samples were taken, and the results were negative. The monthly operating report was completed and sent to the DNR. Preventative maintenance was completed at Well#4 and #5, including exercising water valves and doing well draw down at both wells. Daily rounds were completed for the month at both wells. Meter reading was also completed this month. We had our first water main break of the year on January 24th on the corner of 4th street and 8th ave SE by Candy Cane Park. It was a clean shear of the water main, and Krapfl Construction was able to repair it quickly (pictures below). The last week of January we flushed 50 dead-end hydrants throughout the city. We do this quarterly to get rid of any stagnant water in the lines that don't have a lot of flow through them and help maintain good water quality throughout the city.

Water Operator in Charge,
Terry Recker



Memorandum

To: Mayor, City Council Members and City Administrator
From: Wastewater Operator
Date: February 3, 2025
Subject: **Wastewater Operations –**

Influent Flows

Total Treated for Month 14,198,000 Gallons
Average Flow per Day 458,000 Gallons
Maximum Daily Flow 520,000 Gallons
Average Influent Biochemical Oxygen Demand 312 mg/l
Plant loading pounds per day of 1221 lbs. plant design loading 2400 lbs. per day
Average Influent Total Suspended Solids 351 mg/l.
Plant loading pounds per day 1371 lbs. plant design loading 3600 lbs. per day.
Average Influent Total Nitrogen 45 mg/l
Plant loading pounds per day 180lbs.
Average Influent Phosphorous 10 mg/l.
Plant loading pounds per day 40lbs.

Effluent Testing

C.B.O.D. Monthly Average	2.1mg/l	Limit - 25 mg/l
T.S.S. Monthly Average	3.4mg/l	Limit - 30 mg/l
Ammonia Monthly Average	0 mg/l	Limit – 13 mg/l
Total Nitrogen	26 lbs per day	Yearly Average 88lbs per day
Phosphorus	2.8 lbs per day	Yearly Average 24lbs per day E-coli
Not Required until March		
Yearly Toxicity: Passed so we are good for another year.		

Sewer Call Outs – 0 for the month at the Treatment Plant.
Total for the year – 0

Winter Maintenance and starting to do some sewer televising.