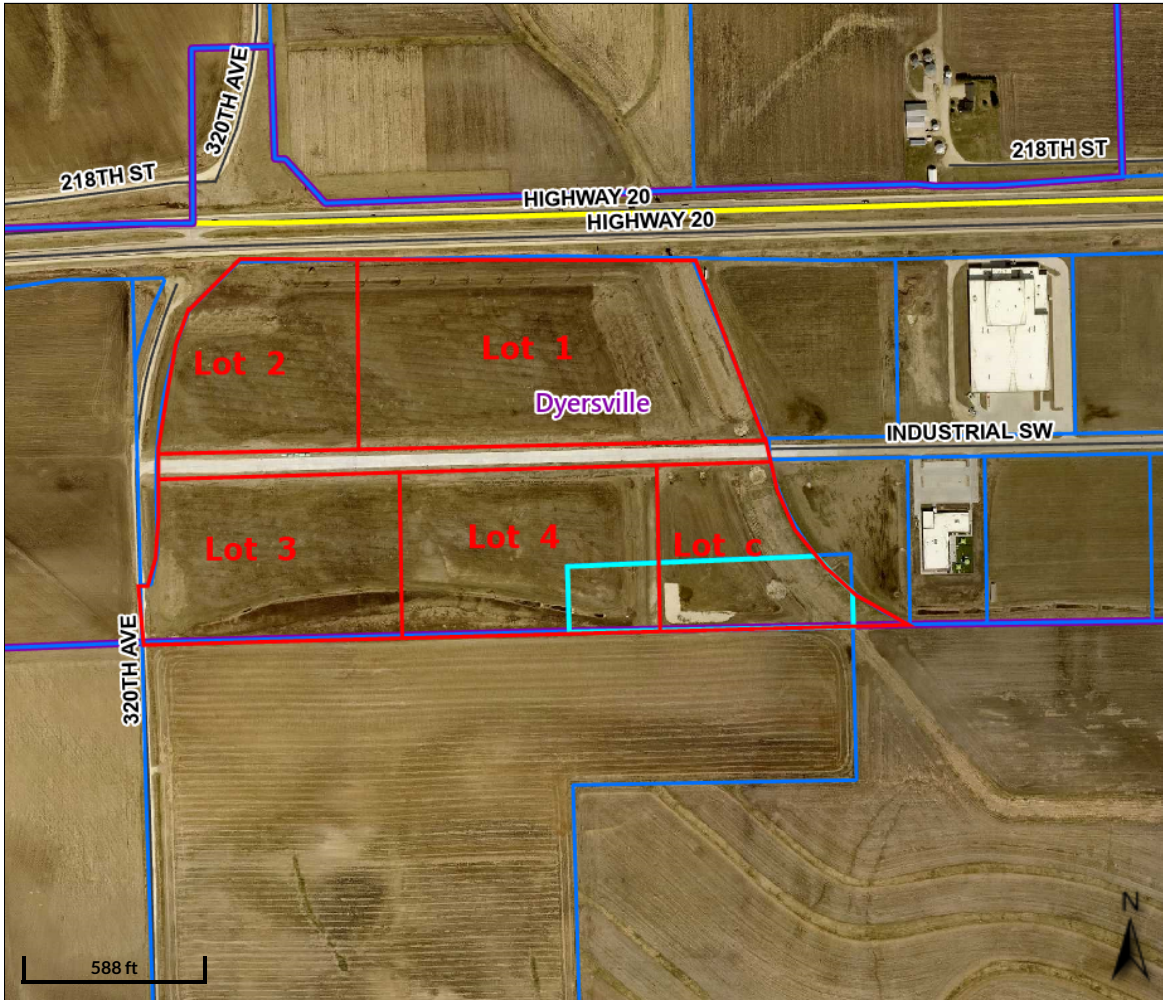


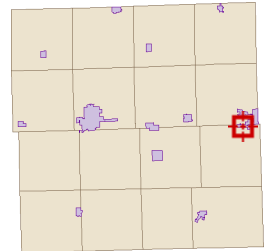


Beacon™

Delaware County, IA



Overview



Legend

Corporate Limits

Corporate Limits

Unincorporated Area

Political Townships

Parcels

BLL

Parcel

Roads

Parcel ID	210020000620	Alternate ID	n/a	Owner Address	Dyersville Industries Incorporated
Sec/Twp/Rng	2-88-3	Class	A		1100 16th Ave SE
Property Address		Acreage	4.25		Dyersville, IA 52040
District	DYERSVILLE AG TIF 8				
Brief Tax Description	20 WEST INDUSTRIAL CENTER FOURTH ADDN PT LT C				
	(Note: Not to be used on legal documents)				

Disclaimer: All critical information should be independently verified. If you have questions about this site please contact either the Delaware County Auditor's Office at 563 927-4701 or the Delaware County Assessor's Office at 563 927-2526

Date created: 7/2/2025

Last Data Uploaded: 7/2/2025 4:31:23 AM

Developed by SCHNEIDER
GEOSPATIAL