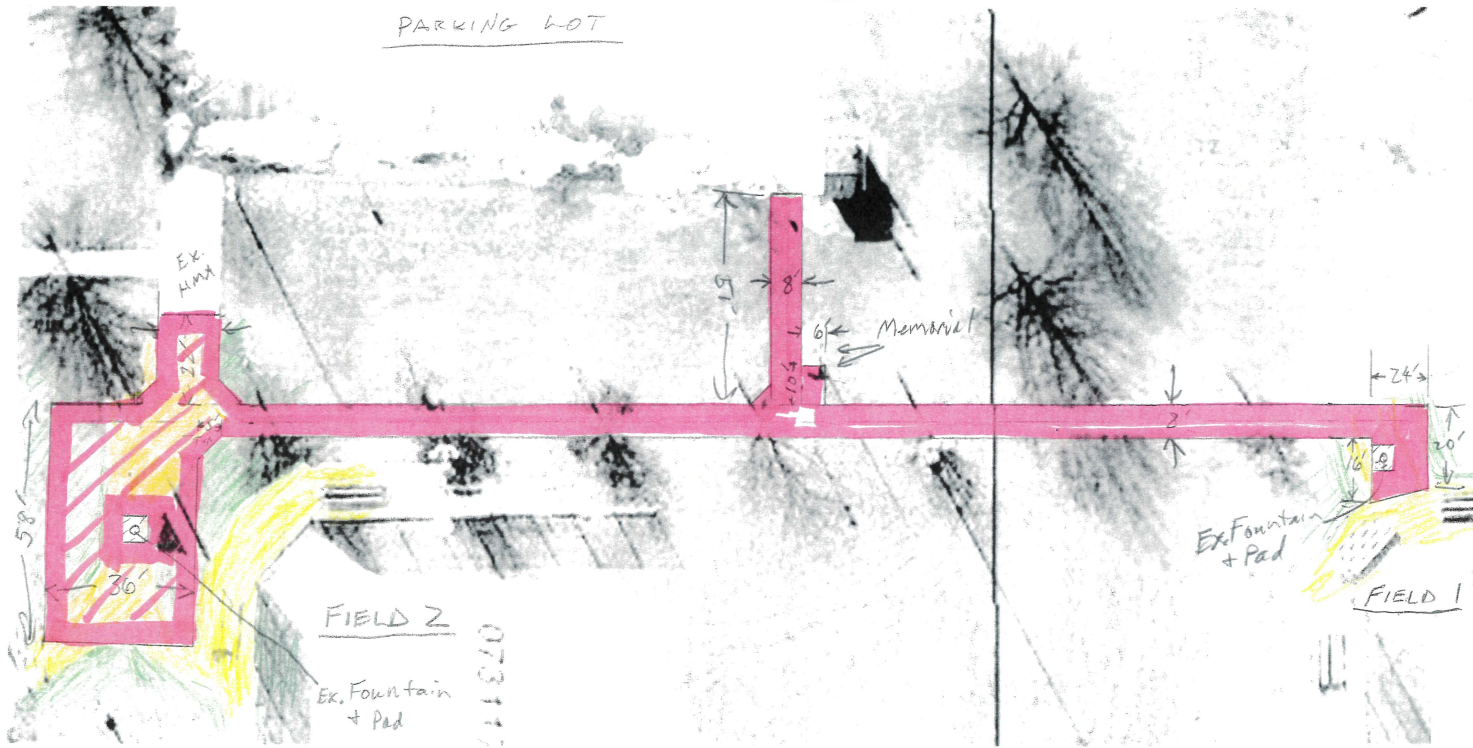


Prop. Plan

1" = 30'
→ N



NOTES

1. Construction shall be in accordance with the latest requirements of SUDAS.
2. All pavement shall be constructed using an IDOT Class C mix.
3. Pavement thickness shall be 5 inches.
4. Pavement shall be placed on a minimum of 4 inches for Class A Road Stone
5. Saw-cut joints shall be placed at a maximum spacing of 8 feet.
6. All pavement shall be constructed to provide positive drainage with a target slope of 0.5 to 1.9%.
7. Pitch the north-south pathway to the west at 1.5%
8. Quote shall provide for complete project, including excavation, preparation of subgrade, placement and compaction of stone base, placement and finishing of concrete pavement, salvage or provision and placement of backfill and topsoil, and seeding using an urban seed mix.