



340 1st Avenue East, Dyersville, Iowa 52040 • Phone: 563-875-7724 • Fax: 563-875-8238

[www.cityofdyersville.com](http://www.cityofdyersville.com)

**To:** Mayor Jacque and City Council Members  
**Cc:** Mick Michel, City Administrator  
**From:** John F. Wandsnider, PE – Public Works Director/City Engineer  
**Date:** May 14, 2025  
**Subject:** Public Works Report: April 16 – May 13, 2025

Things have been operating well over the last month or so in Public Works. Also, with the onset of favorable weather, construction season has ramped up, and a lot of improvements are underway.

**Operation and Maintenance of Fleet, Highways, Streets, Alleys, Parks, Trails, Rivers, Creeks, etc.**

The streets and fleets arm of Public Works is doing an excellent job with the operations and maintenance of Dyersville's street systems and equipment. We have been busy this month with the normal spring-time activities. The Street Department worked on signs, removing and putting away snow-removal equipment, sweeping streets, cold patching-pot holes, etc.

The city's parks and FEMA buy-out properties have been fertilized and sprayed for weed control. The banks of the rivers and creeks will be sprayed for weeds in a couple weeks. We have also been helping Adam get the parks into shape as well as making some improvements.

One PW part-time summer helper started last Thursday, and the second will start in a few weeks. As in the past, summer staff really helps out with the busy summertime workload in Public Works and the Parks.

**Operation and Maintenance of Drinking Water Delivery and Wastewater Disposal Systems**

The drinking water source, storage, treatment, and distribution systems are serving the city well. The wastewater collection, pumping, treatment, and disposal systems are also operating well. Please refer to the Water and Wastewater reports for April, below.

We have a good inventory of compost and mulch available to the public at the wastewater treatment plant.

**Improvement and Expansion Projects**

**3rd Avenue SW Bridge Replacement (added 2/25)**

The City is applying for a grant through the Iowa DOT to replace this bridge.

**Field of Dreams Movie Site Roadway (added 11/24)**

**Paving has taken place over the last two week and is nearly finished. See photos, below.**

**Castle Hill – 4<sup>th</sup> Addition (added 7/24)**

**Utilities have been substantially complete.**

**Lake View Estates (added 7/24)**

The utilities and the paving have been completed within the subdivision. Construction of the sanitary sewer extension across other private property was completed a week or two ago. The developer's engineer has maintained a presence on the site when appropriate to help to ensure a quality product.

**1<sup>st</sup> Avenue West - Old Highway Road - Improvement (Added 2/24)**

Work has begun on the development of the project to overlay the paving with concrete (white-top).

Downtown Streetscape Rehabilitation (Added 4/23)

**The rehab is nearly completed.**

Hwy 52 Manhole Replacement at 2<sup>nd</sup> Avenue (Added 11/21)

**Project is nearly completed. We anticipate opening the road up by noon on Friday, May 16. See photos, below.**

Downtown Businesses Accessibility – (Added June, 2021)

**Construction of the ramps on the East side of the river has been completed. See photos, below.**

20 West Industrial Park, Phase III Rise Grant App. (Added August, 2022)

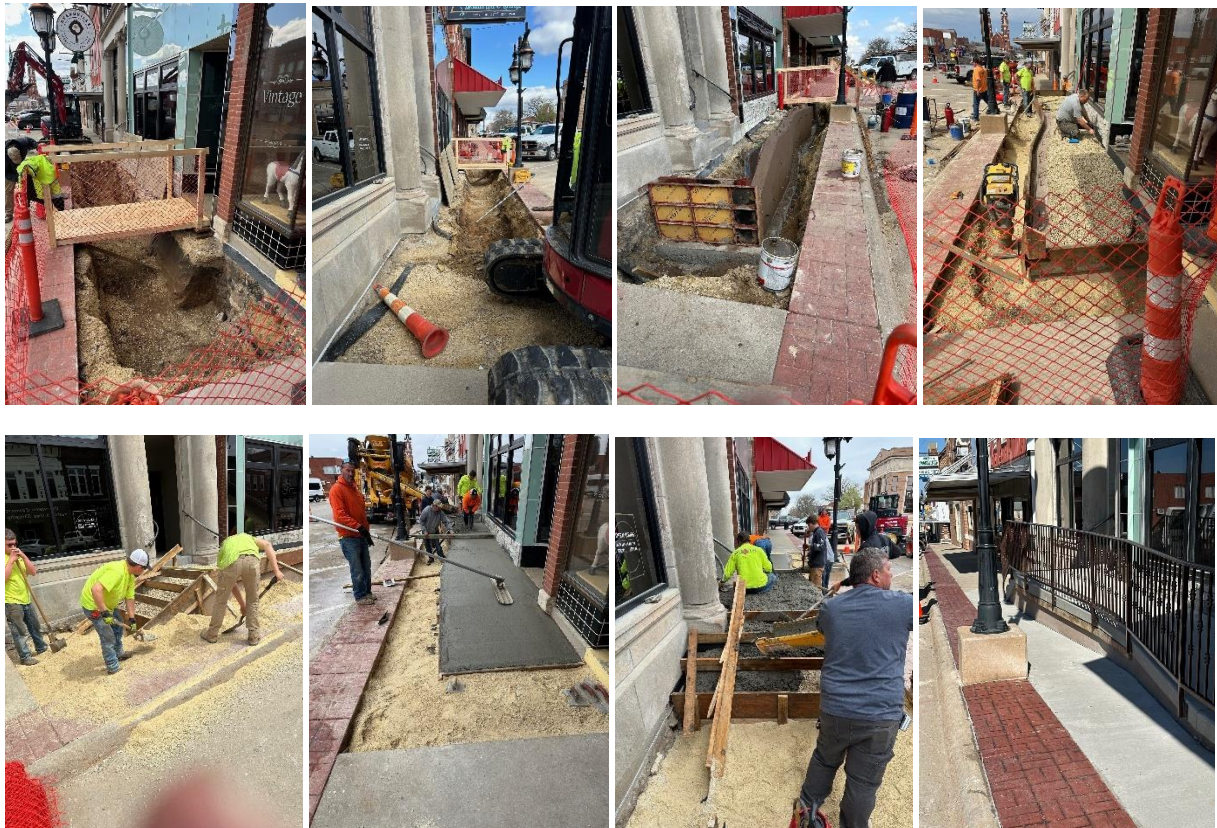
Paving has been complete. Street lights have been installed. Project is substantially complete.

Field of Dreams Stormwater Wetland and Mitigation (Added to list in April, 2020)

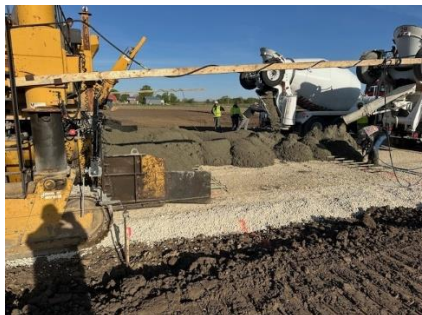
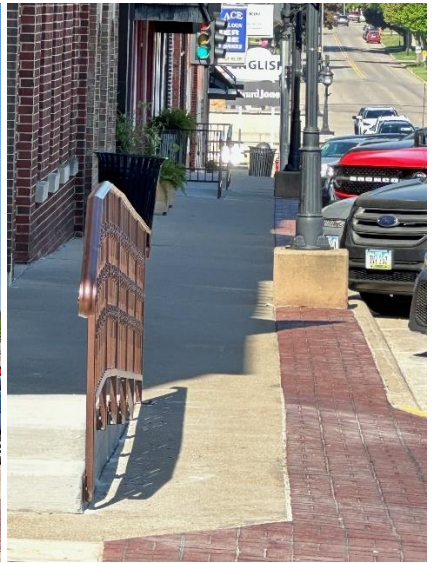
A map showing areas requiring attention has been prepared by the engineer. Work is expected this **Spring**. A live streaming camera of the site is available for viewing at: <https://video.nest.com/live/G4AGPm8tkR>

Dyersville East Road Water and Sewer Extension 2020 (Added to list March, 2020)

Substantial completion has been issued for the Contract E Water and Sewer project.







- END -

# Memorandum

**To:** Mayor, City Council Members and City Administrator  
**From:** Terry Recker, Water Operator  
**Date:** May 9th, 2025  
**Subject:** **Water Operation April 2025 Report**

## **Water Pumped**

Total Water Pumped for Month	12,408,000 Gallons
Average Pumped per Day	414,000 Gallons
Maximum Daily Pumped	717,000 Gallons

## **Chlorine Testing**

Average Free Chlorine in the System –	1.83 mg/l
Average total Chlorine in the System -	1.95 mg/l

## **Polyphosphate**

Average Residual at Well #4&#5	1.43 mg/l
--------------------------------	-----------

## **Water Call Outs**

1 for the month  
Total for the year – 4

## **Water Main Breaks**

1 for the month  
Total for the year – 6

## **Water Activities**

112- Line Locates Completed  
57- Water Work Orders Completed

## **Operations and Maintenance**

Bacteria samples were taken, and the results were negative. The monthly operating report was completed and sent to the DNR. Preventative maintenance was completed at Well#4 and #5, including exercising water valves and doing well draw down at both wells. Daily rounds were completed for the month at both wells. Meter reading was also completed this month. The month wouldn't be complete without another water main break in the city. So, on April 10<sup>th</sup> we had another break at 2<sup>nd</sup> Ave and 2<sup>nd</sup> St SE by Fidelity bank. Krapfl's were once again able to get the repair done quickly (pictures below). Joe and I started to get the pool ready for the upcoming season.

Water Operator in Charge,  
Terry Recker







# Memorandum

**To:** Mayor, City Council Members and City Administrator  
**From:** Wastewater Operator  
**Date:** May 5  
**Subject:** **Wastewater Operations –**

## **Influent Flows**

Total Treated for Month 14,313,000 Gallons  
Average Flow per Day 477,000 Gallons  
Maximum Daily Flow 589,000 Gallons  
Average Influent Biochemical Oxygen Demand 244mg/l  
Plant loading pounds per day of 1011lbs. plant design loading 2400 lbs. per day  
Average Influent Total Suspended Solids 200mg/l.  
Plant loading pounds per day 828lbs. plant design loading 3600 lbs. per day.  
Average Influent Total Nitrogen 40mg/l  
Plant loading pounds per day 174lbs.  
Average Influent Phosphorous 40mg/l.  
Plant loading pounds per day 173lbs.

## **Effluent Testing**

C.B.O.D. Monthly Average	2.1mg/l	Limit - 25 mg/l
T.S.S. Monthly Average	5.9mg/l	Limit - 30 mg/l
Ammonia Monthly Average	.02mg/l	Limit – 5.8 mg/l
Total Nitrogen	18lbs per day	Yearly Average 88lbs per day
Phosphorus	3.5lbs per day	Yearly Average 24lbs per day E-coli
	3.4mg/l Limit 126 MPN	

## **Sewer Call Outs** – 1 for the month at the Treatment Plant.

Total for the year – 1

Terry and Joe had a foaming/overload plant issue the first week of April, we think we have it back under control.

We have been working on routine maintenance around the plant and working on televising the sewers and getting ready for the jetter truck arrival. And have been helping out a lot in other departments with locates and meter change outs and parks related jobs.