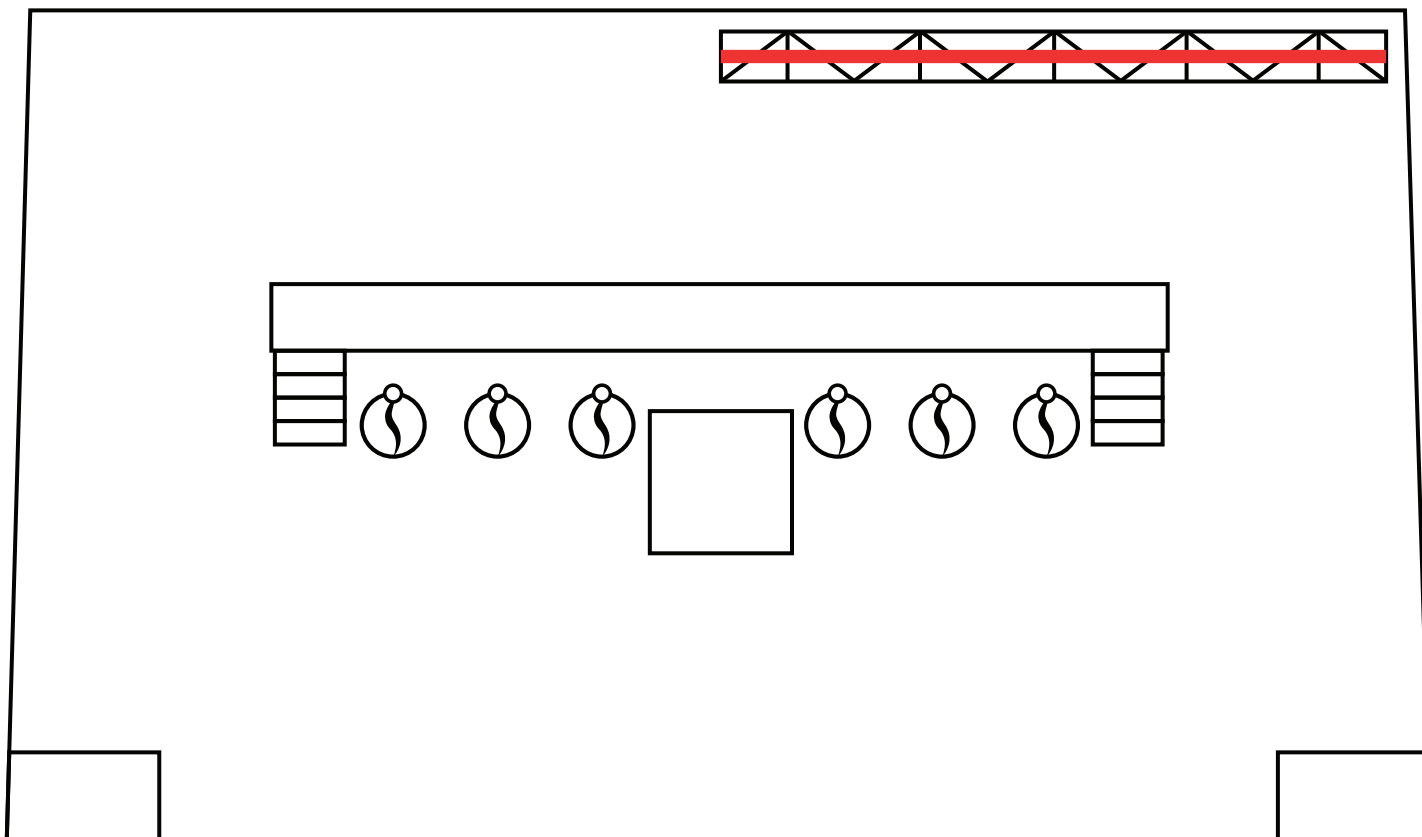




EFFECTDIAGRAMS

NICKELBACK Pyro Layout 2025

TOP VIEW



*Please see attached product list
sheet for exact pyro product
being used

Scale = NTS

NOTE: All product 15' min away from audience.
All product placement TBD at show site.

Legend



= Pyro Positions
(6 Total)



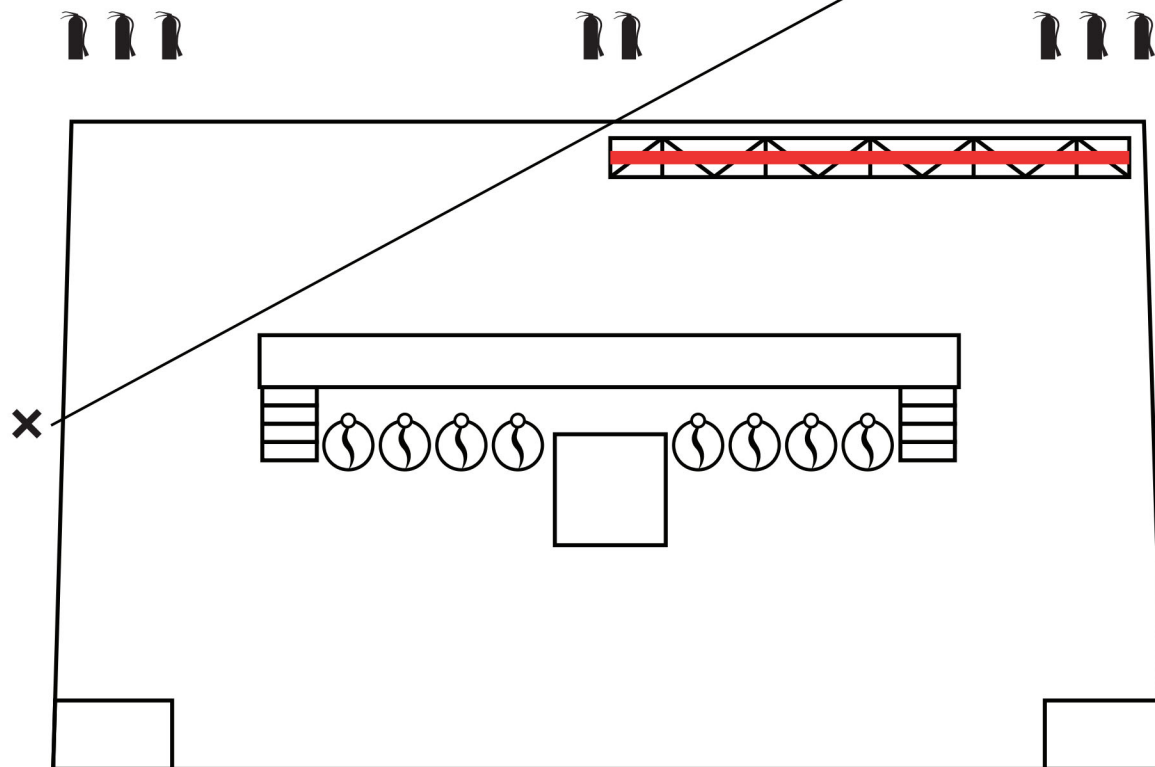
= Concussions
(on Truss 40' above Stage Deck)



= Water Pressurized Fire Extinguishers (4 total)
CO₂ Fire Extinguishers (4 total)

NICKELBACK - OCEAN CITY Pyro Layout 2025

TOP VIEW



SIDE VIEW



*Please see attached product list
sheet for exact pyro product
being used

Scale = NTS

NOTE: All product 15' min away from audience.
All product placement TBD at show site.

Legend



= Pyro Boards
(8 Total, on Stage)



= Concussions
(on Truss 40' above Stage Deck)



= Water Pressurized Fire Extinguishers (4 total)
CO₂ Fire Extinguishers (4 total)



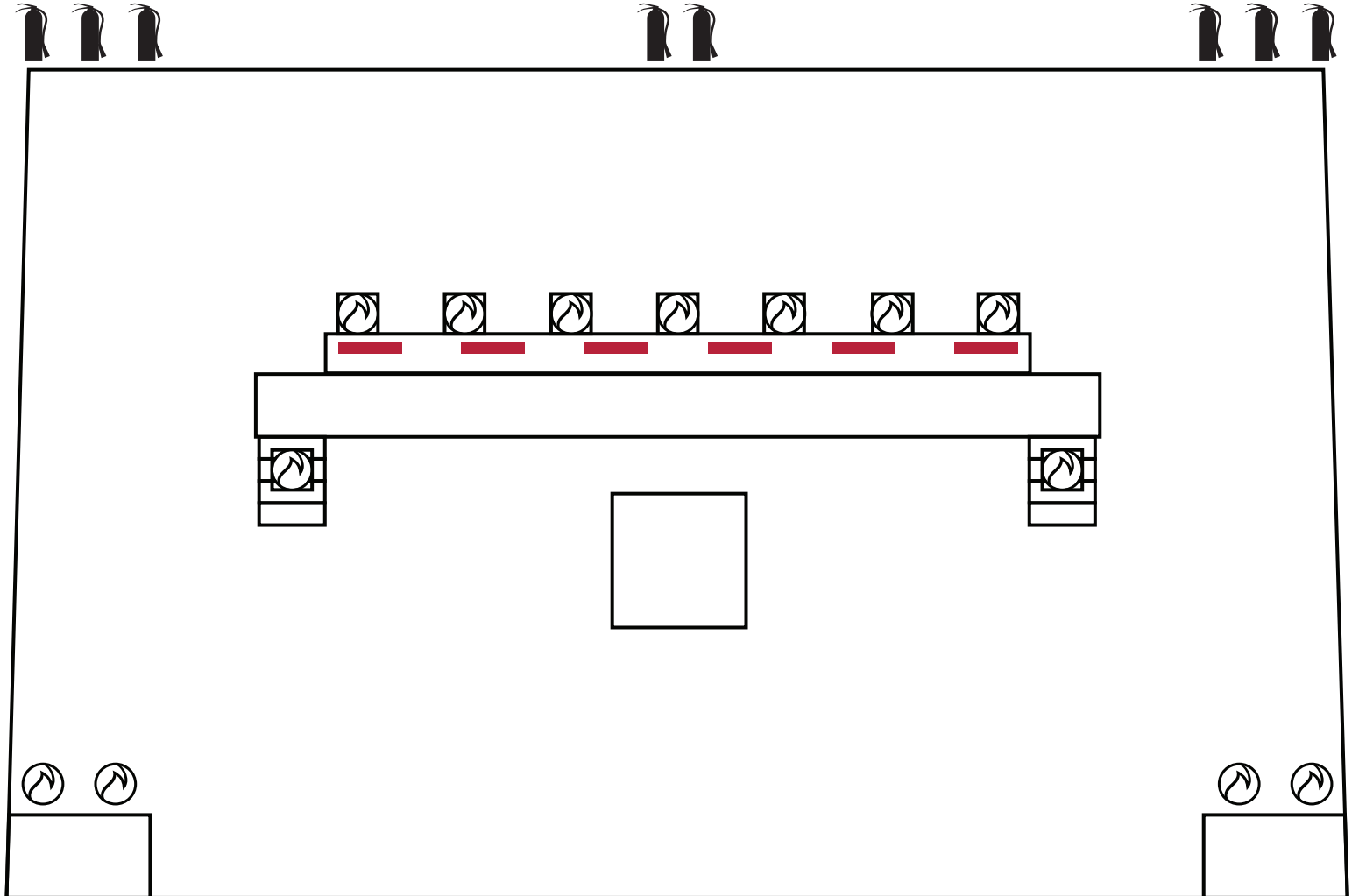
= Various Airbursts
on Vertical Trusses,
1 Stage Right
1 Stage Left

::FLAMES::



NICKELBACK Flames Layout 2025

TOP VIEW



Scale = NTS

*NOTE: All flame units placed 15' min away from audience.
Exact effect unit placement TBD at show site.

Legend



= Flame Bar
(6 Total)



= G-Flame
(13 Total)



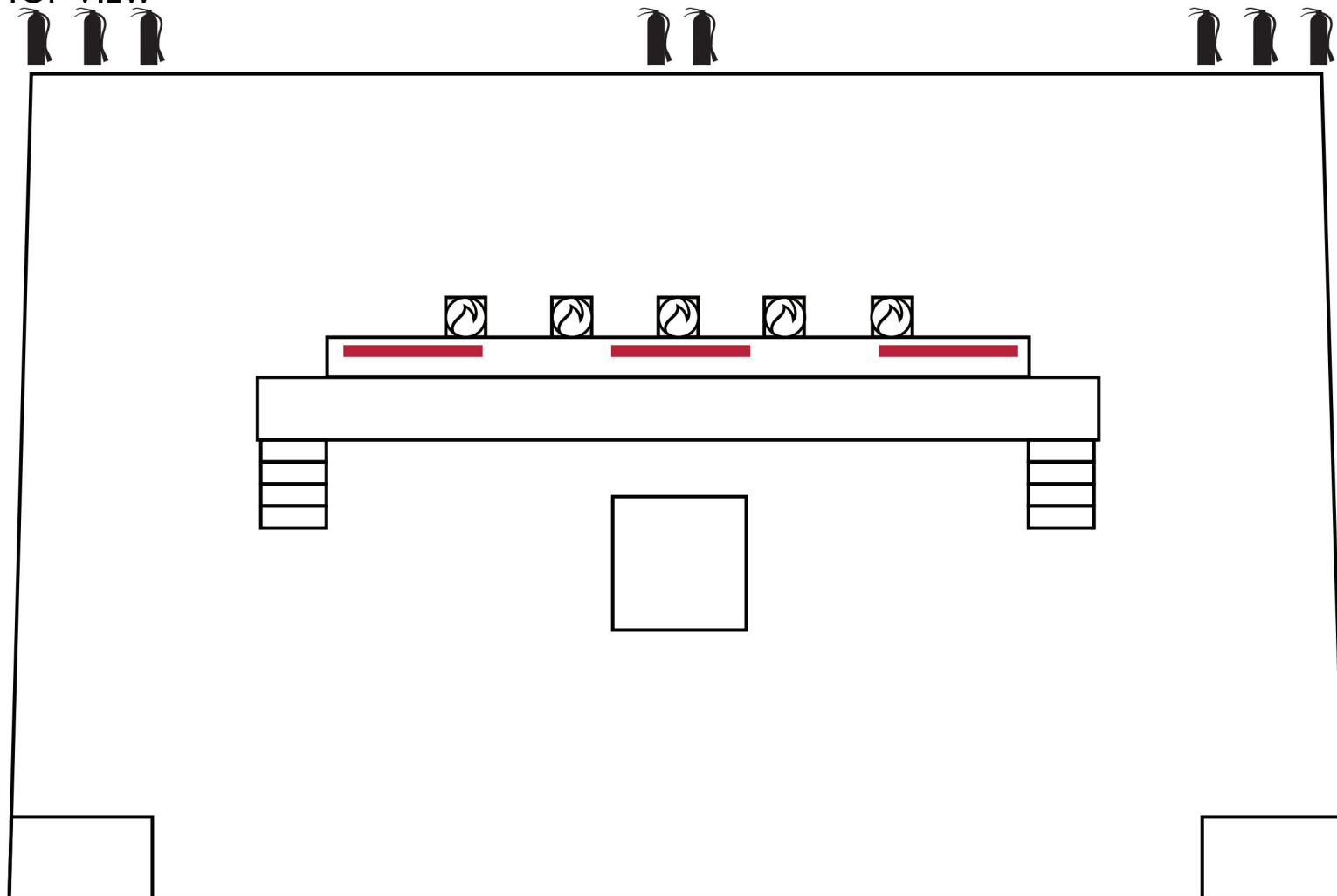
= Water Pressurized Fire Extinguishers (4 total)
CO₂ Fire Extinguishers (4 total)

::FLAMES::



NICKELBACK (5) G-Flames Layout 2025

TOP VIEW



Scale = NTS

*NOTE: All flame units placed 15' min away from audience.
Exact effect unit placement TBD at show site.

Legend



= Flame Bar
(3 Total)



= G-Flame
(5 Total)



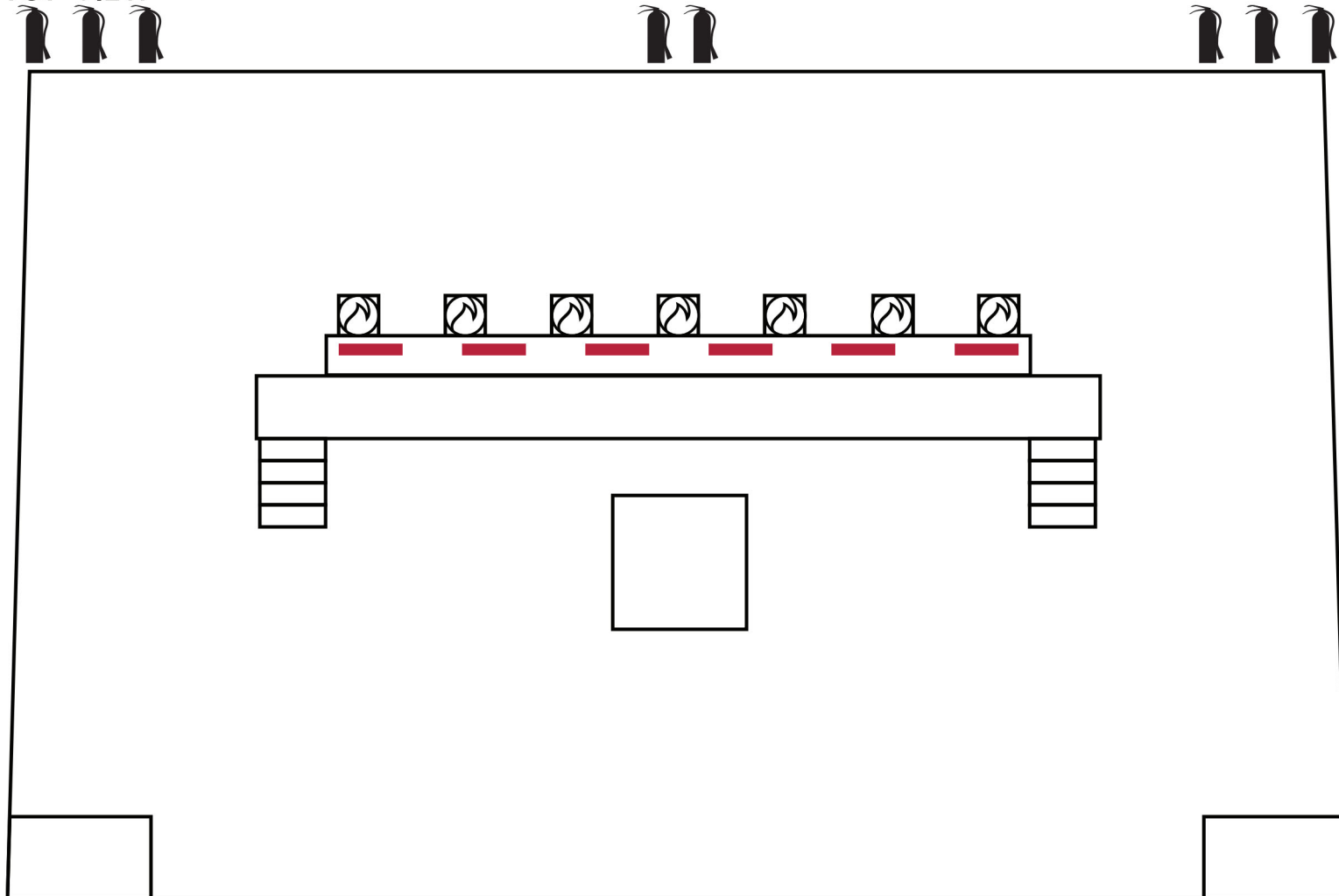
= Water Pressurized Fire Extinguishers (4 total)
CO₂ Fire Extinguishers (4 total)

::FLAMES::



NICKELBACK (7) G-Flames Layout 2025

TOP VIEW



Scale = NTS

*NOTE: All flame units placed 15' min away from audience.
Exact effect unit placement TBD at show site.

Legend



= Flame Bar
(6 Total)



= G-Flame
(7 Total)



= Water Pressurized Fire Extinguishers (4 total)
CO₂ Fire Extinguishers (4 total)