

THE TOWN OF DUNDEE, FLORIDA



REQUEST FOR PROPOSAL FOR UTILITY LIFT STATION MAINTENANCE CRANE TRUCK

RFP NUMBER: 24-08

**Responses are due by
Wednesday, June 26, 2024 by 4:00 P.M.**

MAIL OR DELIVER RESPONSES TO:

Town of Dundee Attn: RFP 24-08
202 East Main Street
PO BOX 1000
Dundee, FL 33838

Contact:

Trevor Douthat
Town Clerk

Town of Dundee

tdouthat@townofdundee.com

(863) 438-8330, Ext 258



RFP 24-08

FY 2024-2025 – 1 UTILITY LIFT STATION MAINTENANCE CRANE TRUCK

Sealed Bids marked “SEALED BID – FY 2024-2025 – 1 UTILITY LIFT STATION MAINTENANCE CRANE TRUCK” will be received by the Town Clerk of the Town of Dundee, Florida, until Wednesday, June 26, 2024 at 4:00 P.M. at P.O. Box 1000, 202 East Main Street, Dundee, Florida 33838, for the following:

The Town of Dundee (the “Town”) is seeking proposals on and/or for one **(1) UTILITY LIFT STATION MAINTENANCE CRANE TRUCK** (the “Truck”) in accordance with the requirements and specification set forth herein and as depicted by **Exhibit “A”** which is attached to the Work Summary and incorporated herein by reference. The Town requires certain items to be included in the Bid, as follows: (1) options to finance though the vendor/dealership or, in the alternative, the right and ability for the Town to select, in its sole discretion, to finance though a bank or lending institution the purchase price of and/or for **1 UTILITY LIFT STATION MAINTENANCE CRANE TRUCK**; and (2) the Truck must be delivered and ready for route.

In addition to the aforementioned, the information and specification(s) required for the Truck and this **RFP 24-08** are, as follows:

1. Bidder must provide Lead time of the units. (from build to delivery)
2. Bidder must include all warranty on the body and chassis. (3-5year preferred)
3. List of references that currently operate these styles of trucks.

SPECIFICATIONS :

▪ CAB/ BODY AND CHASSIS SPECS:

- Ford F-550 Super Cab 4x4
- XL Trim Package
- Exterior color – Oxford White
- Interior Color – Grey
- Cruise Control
- Platform Running Boards
- Equipped with an Approved Utility Body to support the Crane
- Supply and Install a Strobe Package for all 4 corners of Truck (must be able to be seen from all sides of the truck)
- Payload Plus Package 19,500 lb. GVW
- Automatic Transmission 10-speed
- Work Bench Rear Bumper w/ storage compartment (equipped with step & handle)
- Fold Down Tail Gate

- Tow Package Included
 - Hydraulic (out/down) Stabilizers
 - LED Compartments Lights
 - LED Flood Light Kit (mounted around body)
 - Back-Up Alarm with Camera
 - Spray-in Bed Liner
 - Tie Downs – mounted along the inside of Truck bed (floor and bed)
- **CRANE SPECIFICATIONS:**
- Crane must be a 30' reach with a work light mounted at the end of crane
 - Wireless Remote (equipped with cab docking charging)
 - Crane must be able to lift 8,600lbs
 - PTO/ pump to operate crane, outriggers, and compressor.
 - Crane and other mounting materials must be coated to prevent failures due to the environment of working around sewer/wastewater and Florida climate
- **OTHER SPECIFICATIONS:**
- Equipped with a hydraulic driven compressor with mounted 50ft hose reel with roller guide exit of body with a 25gallon air tank kit
 - Equipped with Installed Bulkhead to prevent damage to the rear of truck cab
 - Spare Tire for the Truck – Ford F-550

On Thursday, June 27, 2024 at 2:00 P.M., at Town Hall, 202 East Main Street, Dundee, Florida 33838, bids will then and there be publicly opened and read aloud at a meeting of the Purchasing Review Committee.

The project specified shall be furnished in accordance with this Request for Proposal, Work Specifications, Terms and Conditions, and Work Summary attached hereto and made a part hereof as if fully set forth herein.

Questions may be submitted to the Town Clerk until 3:30pm on June 12, 2024. For more information regarding this **RFP 24-08**, please contact **Trevor Douthat, (863) 438-8330 or by e-mail at tdouthat@townofdundee.com**.

Public Records - It is the policy of this state that all state, county, and municipal records are open for personal inspection and copying by any person. Providing access to public records is a duty of each governmental agency. §119.01, Fla. Stat. (2023). As such, do not submit any document(s) that you do not want to be made public.

KNAPHEIDE TRUCK EQUIPMENT CENTER

KNAPHEIDE TRUCK EQUIPMENT CO - SOUTHEAST
510 THORPE RD ORLANDO, FL 32824
407-857-2040

INVOICE

INVOICE: ORJ42741
Reference: GH00005490
DATE: 04/22/24
KEY CODE: 07379

MVRS REGISTRATION # MV63874

Customer: 33510
JARRETT-GORDON FORD
2600 ACCESS ROAD NORTHWEST

Ship To:
JARRETT-GORDON FORD
2600 ACCESS ROAD NORTHWEST

DAVENPORT FL 33897
863-422-1167

DAVENPORT FL 33897

Contact: WAYNE AESCHLIMAN
P.O. SIGNED QUOTE

Ship Via: POOL DELIVERY

MAKE: FORD MODEL: F-550 YEAR: 2023 VIN: 1FD0X5HT6PED44318

Start Date: 07/07/23 Req. Date: 04/22/24 FO: C300 TPC\LPC\FPC:

KMT1-11 L1881-23

Knapheide 6132DLR-55K: 11 ft crane body with torq-isolator crane support system. A-40 galvanneal compartments and doors, 3/16" treadplate floor, 10 gauge tops and backs, full-seam continuously welded. 12 gauge bottom and end panels of compartments and double panel doors. Exclusive 12 stage K-coat protection includes 12 stages of cleaning, pre-treat, electrodeposition prime coat, rinse, and curing. (6) recessed cargo tie-downs in floor - 6,000# capacity, (2) heavy duty aluminum grab handles, and LED stop/tail/turn lights, clearance lights, & backup lights. 21" work surface bumper with thru compartment, vise plate, & 2.5" receiver tube. (2) Grip-Strut flex steps, (1) each side of rear tailshelf. 16" high double panel slam tailgate with center latch and flat space for tailgate graphics.

KnapLiner: Commercial grade spray-on bed liner applied to cargo floor, sides, compartment tops, bulkhead, tailgate, rear bumper, and entire front of body
Stellar 8630 CDT Pro Service Crane: Max 8,500lb lifting capacity (53,100ft-lbs), 30' hydraulic reach, planetary winch 60'/min speed, and double-acting cylinders w/integral holding valves. Filters, crane hook, snatch block, anti-two block device & hydraulic shutdown, 3/8" cable, boom support, wireless remote control (RF) with back up pendant control, PTO, hydraulic pump for crane, hydraulic reservoir with guard, & remote docking / charge station for crane remote

Control Panel: Power Cell, controller and (8) button switch panel in the rear crane compartment. CAN-bus system with continuous working load of 115 amps, features built in overload current protection for the system and operator safety. LCD display installed in cab.

Hydraulic Air Compressor: Boss 40 CFM hydraulic compressor with Reelcraft 50'x? "

*** CONTINUED NEXT PAGE ***

KNAPHEIDE
SINCE 1848

KNAPHEIDE TRUCK EQUIPMENT CENTER

KNAPHEIDE TRUCK EQUIPMENT CO - SOUTHEAST
510 THORPE RD ORLANDO, FL 32824
407-857-2040

I N V O I C E

INVOICE: ORJ42741
Reference: GH00005490
DATE: 04/22/24
KEY CODE: 07379

MVRS REGISTRATION # MV63874

Customer: 33510
JARRETT-GORDON FORD
2600 ACCESS ROAD NORTHWEST

Ship To:
JARRETT-GORDON FORD
2600 ACCESS ROAD NORTHWEST

DAVENPORT FL 33897
863-422-1167

DAVENPORT FL 33897

Contact: WAYNE AESCHLIMAN

Ship Via: POOL DELIVERY

P.O. SIGNED QUOTE

MAKE: FORD MODEL: F-550 YEAR: 2023 VIN: 1FD0X5HT6PED44318

Start Date: 07/07/23 Req. Date: 04/22/24 FO: C300 TPC\LPC\FPC:

KMT1-11 L1881-23

hose reel and roller fairlead through the right rear compartment. FLR system and underbody air tanks included with compressor.

Welder Bracket: Welder mounting plate installed on the street side compartment top at rear

Side Compartments: 44" high side packs and 60" high right front vertical compartment with automotive quality 3-pt T-handles

1st Vertical Side Compartment: 7 drawer unit - 3-3" high drawers, 3-5" high drawers, and 1-7" high drawer (street side) / Gas bottle retainer (2 bottles), vented top & bottom; Full height vertical partition with 3 adjustable divider shelves (curbside)

2nd Vertical Side Compartment: 2 adjustable divider shelves with 4 dividers each (street & curbside)

1st Horizontal Side Compartment: Bolt bin storage unit (street side) / bolt-in divider shelf with 8 dividers (curbside)

3rd Vertical Side Compartment: 2 adjustable divider shelves with 4 dividers each (street side) / Fixed shelf (curbside)

Master Locking System: Secures one entire side of compartments with a padlock in one easy motion and acts as a visual theft deterrent.

Cab Protector: with punched window

Auxiliary Lighting: (4) LED work lights installed

Strobe system: S/T/T backup lights with built-in reflectivity & integrated strobes; (2) amber LED strobe lights installed on front grill

Outriggers: Hydraulic out / hydraulic down at curbside and hydraulic down at street side

Backup Alarm: 97 db audible alarm

*** CONTINUED NEXT PAGE ***

KNAPHEIDE
SINCE 1848

KNAPHEIDE TRUCK EQUIPMENT CENTER

KNAPHEIDE TRUCK EQUIPMENT CO - SOUTHEAST
510 THORPE RD ORLANDO, FL 32824
407-857-2040

I N V O I C E

INVOICE: ORJ42741

Reference: GH00005490

MVRS REGISTRATION # MV63874

DATE: 04/22/24

Customer: 33510

Ship To:

KEY CODE: 07379

JARRETT-GORDON FORD

JARRETT-GORDON FORD

2600 ACCESS ROAD NORTHWEST

2600 ACCESS ROAD NORTHWEST

DAVENPORT FL 33897

DAVENPORT FL 33897

863-422-1167

Contact: WAYNE AESCHLIMAN

Ship Via: POOL DELIVERY

P.O. SIGNED QUOTE

MAKE: FORD

MODEL: F-550

YEAR: 2023

VIN: 1FD0X5HT6PED44318

Start Date: 07/07/23 Req. Date: 04/22/24 FO: C300

TPC\LPC\FPC:

KMT1-11 L1881-23

Backup Camera: OEM backup camera installed

Trailer Plug: 7-way flat trailer plug installed

Finish Paint: Body interior / exterior painted single stage to match cab

LED compartment lights installed in each compartment except bottle gas compartment

E-Locks: Electric locks installed and programmed to key fob

KMT FREIGHT

REMIT TO:

KNAPHEIDE TRUCK EQUIPMENT SOUTHEAST

510 THORPE RD

TERMS: N30

ORLANDO FL 32824

KNAPHEIDE

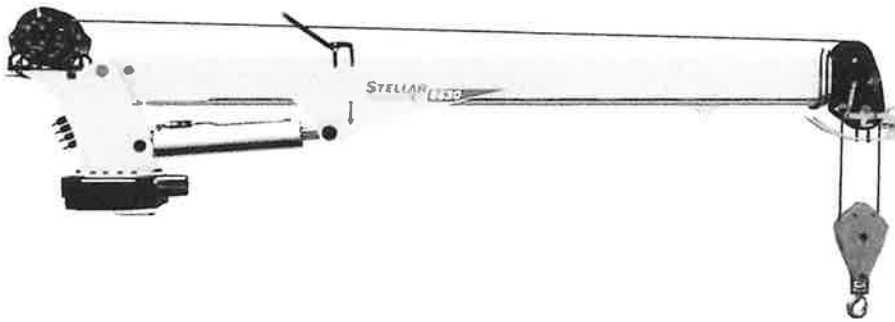
SINCE 1848



8630 HYDRAULIC SERVICE CRANE

8,600-lb Capacity with 30' of Reach

Part of Stellar's new 86 Series, the 8630 Telescopic Crane features an innovative design and quality construction for the ultimate in productivity. The unique boom design reduces weight while maintaining strength, the compact boom tip provides easier reach into small spaces, and the CDTpro™ Control System with Range Finder™ technology delivers superior control and communications.



ADDITIONAL INFORMATION

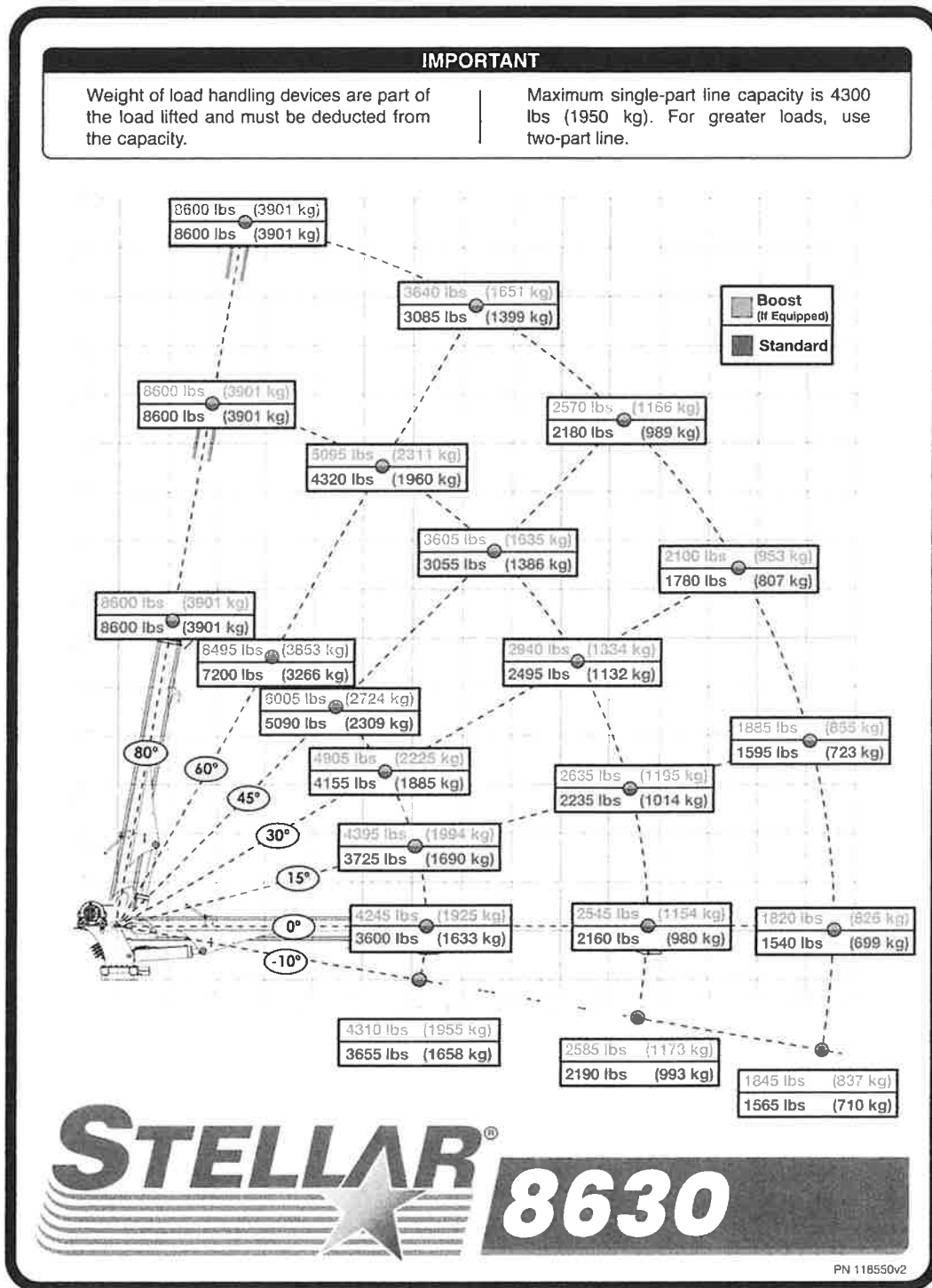
- **Planetary Winch.** Featuring a hydraulic or mechanical brake system, it lifts the maximum crane load and offers the smoothest and fastest speeds in the market today for maximum productivity.
- **CDTpro Control System.** The most advanced crane remote ever. Save time by knowing your crane can lift the load before you set up. The innovative, industry-only Range Finder™ technology provides real-time max lifting capacity from any point around the crane.
- **Flip Sheave with Bar-Style Anti-Two Block.** Stellar's patented flip sheave allows for a shorter horse head profile, allowing for boom placement in tight quarters, such as an equipment cab.
- **Octagonal Boom.** This next-generation telescopic service crane boom design optimizes all the features of a hexagonal boom while reducing weight.
- **Superior Boom Articulation.** Stellar Hydraulic Cranes make loading easier with industry-leading -10 degrees to +80 degrees articulation.
- **Full Hydraulic Extension.** No manual extension is required. You get full hydraulic reach of 30'.
- **Crane Boost System:** This industry-first, proprietary technology from Stellar allows operators who reach maximum capacity to productively operate through that situation by effectively increasing crane capacity to nearly 118% of its normal operating mode for a short period of time.
- **Quick-Release Snatch Block Stow.** Easily stow your snatch block on the underside of the boom after use. The unique design gently releases the snatch block for use when the boom is raised at close to 60 degrees to ensure a safe and orderly deployment.
- **On-Demand Speed Control.** This Stellar exclusive ramps engine rpm up only when the crane is being used, returning it to idle after five seconds to lower fuel consumption and reduce noise pollution in the work area.
- **400-Degree Rotation System.** The cast iron base and internal mechanical stop provide the most durable rotation system found in the industry.
- **Counterbalance Valves.** Included on each cylinder to prevent unintended cylinder movement should a hose break.
- **Greaseable Pivot Bushings.** Each pivot pin location includes bushings and grease zerks to simplify maintenance and help ensure years of use.
- **Certified.** Meets ANSI B30.5 and OSHA 1910.180 specifications.

SPECIFICATIONS

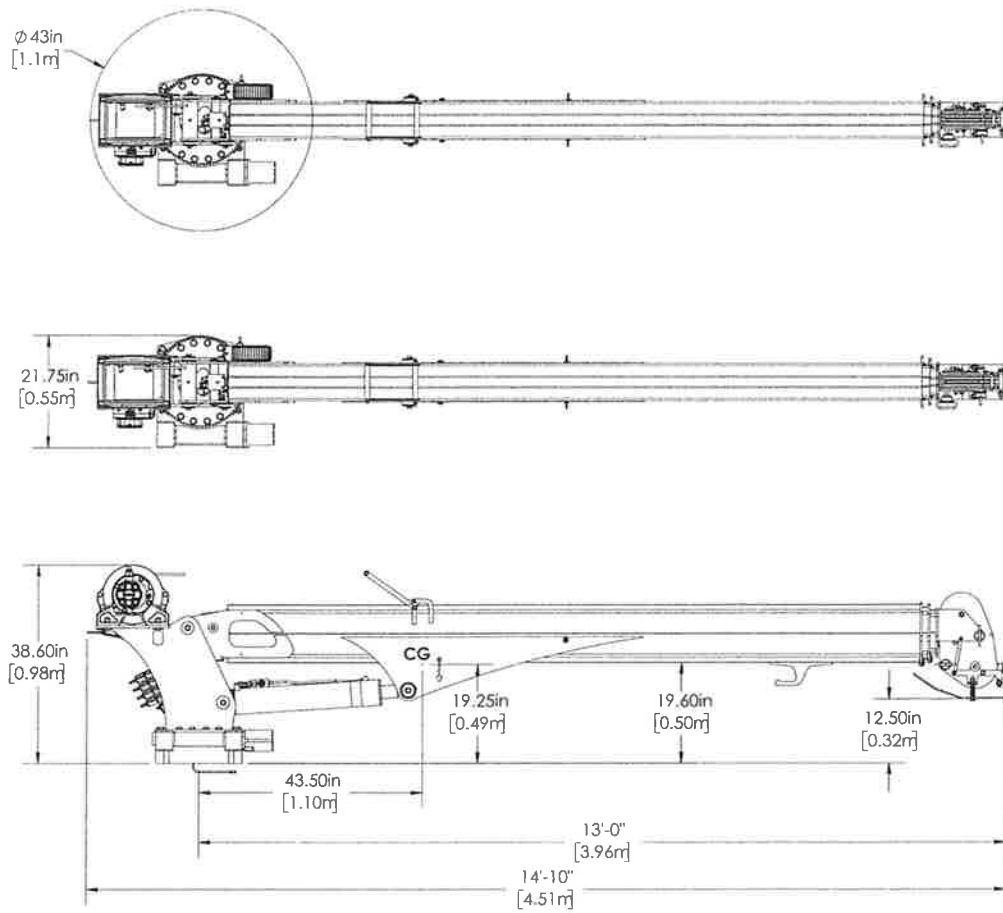
Crane Rating*	53,100 ft-lb (7.3 tm)
Boom Length:	13' (3.96 m) from CL of crane
Boom Extension:	
• 1st Stage:	Hydraulic 100" (254 cm)
• 2nd Stage:	Hydraulic 100" (254 cm)
Maximum Horizontal Reach:	29' 8" (9.04 m) from CL of crane
Maximum Vertical Lift:	31' 6" (9.60 m) from crane base
Lifting Capacity**:	8,600 lbs @ 6' 2" (3,900 kg @ 1.88 m)
	1,820 lbs @ 29' 2" (826 kg @ 8.89 m)
Boom Elevation:	-10° to +80°
Stowed Height (crane only):	38.6" (98 cm)
Mounting Space Required:	20" x 21" (50.8 x 53.3 cm)
Approximate Crane Weight:	1,735 lbs (787 kg)
Winch:	
• Rope Diameter:	3/8" (0.95 cm)
	6X31 IWRC-DGXIP X 100' (30.48 m)
• Line pull speed:	60 ft/min (18.29 m/min)
• Max. single part line:	4,300 lbs (1,950 kg)
• Max. double part line:	8,600 lbs (3,900 kg)
Rotation:	400° power (worm gear)
Power Supply Required:	PTO & Pump
	8 gpm @ 3,000 psi (30.3 lpm @ 207 bar)
	8 gpm @ 3,000 psi (30.3 lpm @ 207 bar)
Min. Rec. Chassis (GVRW):	19,000
	*Crane rating in Boost Mode. Normal crane rating is 45,000 ft-lbs (6.2

TM).

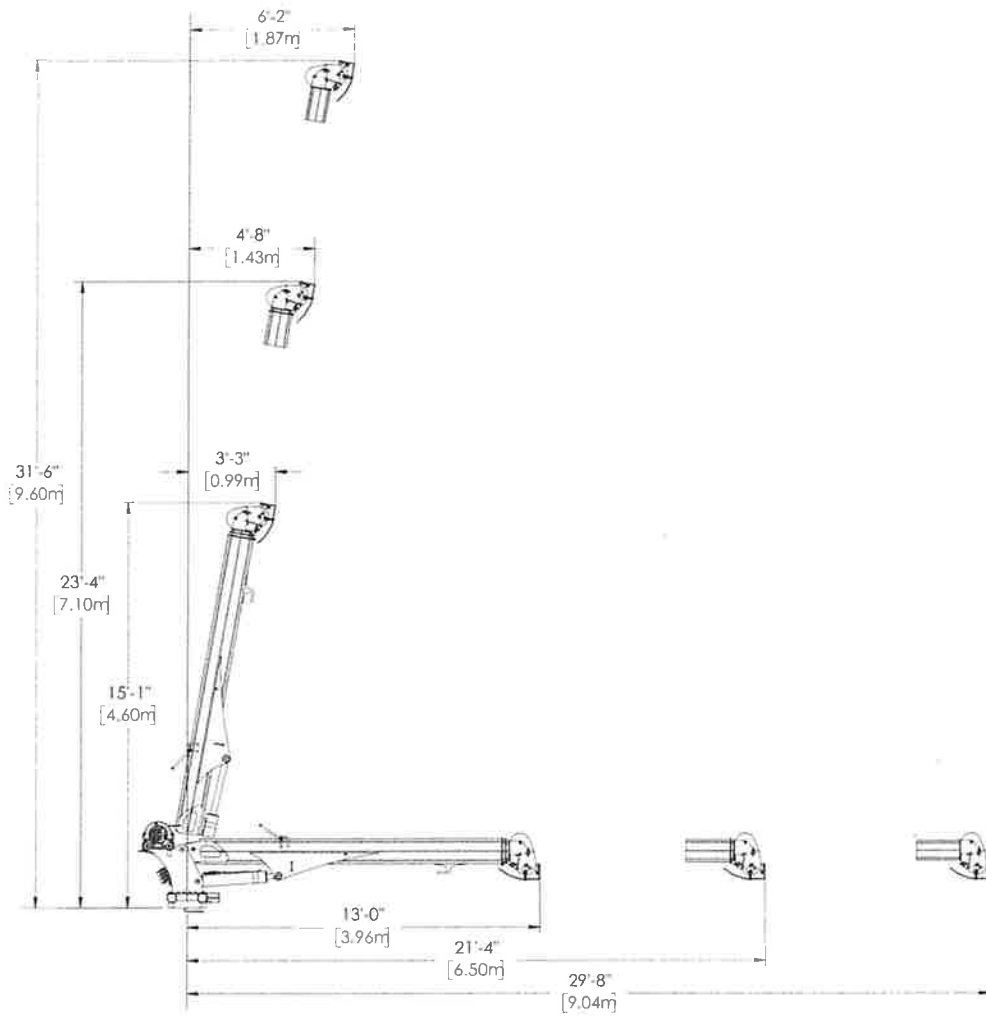
**Maximum capacities in Boost Mode.



Capacity Chart



Dimensions



Geometric Dimensions



190 State Street | Garner, Iowa 50438 | | (877) 621-1570

© Stellar. All rights reserved.

BOSS AIR COMPRESSORS

STANDARD WARRANTY FOR

ROTARY SCREW COMPRESSORS

BOSS Industries, LLC warrants that this Rotary Screw Compressor unit conforms to applicable drawings and specifications approved in writing by BOSS. The unit will be free from defects in material and workmanship for a period of thirty (30) months from date of shipment. All other components and parts not of BOSS manufacture will be free from defects in material and workmanship for the duration of the manufacturer's **warranty** period. If within such period BOSS receives from the Buyer written notice of and alleged defect in or nonconformance of the unit, all other components and parts of BOSS manufacture and if in the judgment of BOSS these items do not conform or are found to be defective in material or workmanship, BOSS will upon return of the item F.O.B. BOSS original shipping point, repair or replace the item or issue credit for a replacement item. Defective material must be returned within thirty (30) days of return shipping instructions from BOSS. Failure to do so within specified time will result in forfeiture of claim. Factory installed units will also include **warranty** on installation for a period of one (1) year.

BOSS's sole responsibility and Buyer's exclusive remedy here under is limited to such repair, replacement, or repayment of the purchase price. BOSS shall have no responsibility for any cost or expense incurred by Buyer from inability of BOSS to repair under said **warranty** when such inability is beyond the control of BOSS or caused solely by Buyer. This **warranty** shall be void and BOSS shall have no responsibility to repair, replace, or repay the purchase price of defective or damaged parts or components resulting directly or indirectly from the use of repair or replacement parts not of BOSS manufacture or approved by BOSS or from Buyer's failure to store, install, maintain, and operate the compressor according to the recommendations contained in the Operating and Parts Manual and good engineering practice. This **warranty** does not cover damages caused by accident, misuse, or negligence. If the compressor unit is disassembled, the **warranty** is void. The total responsibility of BOSS for claims, losses, liabilities or damages, whether in contract or tort, arising out of or related to its products shall not exceed the purchase price. In no event shall BOSS be liable for any special, indirect, incidental or consequential damages of any character, including, but not limited to, loss of use of productive facilities or equipment, loss of profits, property damage, expenses incurred in reliance on the performance of BOSS, or lost production, whether suffered by Buyer or any third party.



Limited Warranty Statement

Stellar Industries, Inc. (Stellar) warrants products designed and manufactured by Stellar to be free from defects in material and workmanship under proper use and maintenance. Products must be installed and operated in accordance with Stellar's written instructions and capacities. All warranty periods will begin on the in-service date as defined on the second page of this document. This warranty shall cover the following Stellar products:

	1 Year <i>Does not extend beyond 2 years from date of manufacture</i>	3 Year <i>Does not extend beyond 4 years from date of manufacture</i>	5 Year <i>Does not extend beyond 6 years from date of manufacture</i>	Lifetime <i>(Original Owner Only)</i>
Telescopic & Articulating Cranes				
Stellar Manufactured Crane Structures			✓	
Paint Coverage on Stellar Manufactured Parts		✓		
Parts	✓			
Repair Labor	✓			
Mechanic, Tire Service & LP Bodies				
Rust Through on TMAX Service Bodies			✓	
Stellar Manufactured Service Body Sub-Structures			✓	
Paint Coverage			✓	
Parts	✓			
Repair Labor	✓			
Hooklifts, Roll Offs & Dumpster Trucks				
Stellar Manufactured Structural Components			✓	
Paint Coverage		✓		
Parts	✓			
Repair Labor	✓			
Tarpers				
Parts	✓			
Repair Labor	✓			
Paint Coverage	✓			
Industrial Trailers				
Stellar Manufactured Structural Components		✓		
Parts	✓			
Repair Labor	✓			
Paint Coverage	✓			
Air Compressors				
Parts	✓			
Repair Labor	✓			
Paint Coverage	✓			
Drawer Systems				
Drawer Slides, Latches & Handles				✓
Manufactured Parts	✓			
Repair Labor	✓			
Paint Coverage	✓			
Lube Skids, Lube Trailers & Fuel Trailers				
Stellar Manufactured Structural Components		✓		
Parts	✓			
Repair Labor	✓			
Paint Coverage	✓			

In-Service Date

The in-service date will be derived from the completed warranty registration located at www.stellarindustries.com. In the event warranty registration is not received by Stellar, the factory ship date will be used.

Definitions

Stellar Manufactured Structural Component/Service Body Sub-Structure – Includes any structural weldment or load bearing support structure manufactured by Stellar Industries

Rust Through on Stellar TMAX Service Bodies - Rust Through is defined as a hole in the metal caused by corrosion. Excluded is corrosion caused by external caustics, including but not limited to improper cleaning material, road salt and other chemicals left on the body for extended periods of time.

Paint Coverage on Stellar Manufactured Parts - Stellar guarantees that paint will not fail in terms of adhesion, blistering or unreasonable loss of color or gloss for a 3-year period. Excluded is damage such as chips, dents, scratches, and corrosion due to caustic chemicals and dirt build-up. Regular cleaning and maintenance of the product to remove external factors is expected to keep this warranty in force.

Warranty Process

Stellar's obligation under this warranty is limited to, and the sole remedy for any such defect shall be, the repair and/or replacement (at Stellar's option) of the unaltered part and/or component in question. Stellar after sales service personnel must be notified by telephone, fax, or letter of any warranty applicable damage within fourteen (14) days of its occurrence. If at all possible, Stellar will ship the replacement part within 24-hours of notification by the most economical, yet expedient, means possible. Expedited freight delivery will be at the expense of the owner.

Warranty claims must be submitted and shall be processed in accordance with Stellar's established warranty claim procedure. Stellar after-sales service personnel must be contacted prior to any warranty claim. A return materials authorization (RMA) account number must be issued to the claiming party prior to the return of any warranty parts. Parts returned without prior authorization will not be recognized for warranty consideration. All damaged parts must be returned to Stellar freight prepaid; freight collect returns will be refused. Freight reimbursement of returned parts will be considered as part of the warranty claim. When submitting an invoice for warranty credit all invoices must be itemized to show the breakdown of parts, labor and any miscellaneous charges. With warranty approval, Stellar Industries will reimburse applicable repair/installation labor up to \$150.00/hour. Any additional labor charges or labor rates above the specified amount will need to be approved by Stellar prior to warranty submittal.

Warranty Repair

Warranty service will be performed by any Stellar new equipment distributor, or by any Stellar-recognized service center authorized to service the type of product involved, or by the Stellar factory in the event of a direct sale. At the time of requesting warranty service, the owner must present evidence of date of delivery of the product. The owner shall be obligated to pay for any overtime labor requested of the servicing company by the owner, any field service call charges, and any towing and/or transportation charges associated with moving the equipment to the designated repair/service provider.

All obligations of Stellar and its authorized dealers and service providers shall be voided if someone other than an authorized Stellar dealer provides other than routine maintenance service without prior written approval from Stellar. In the case repair work is performed on a Stellar-manufactured product, original Stellar parts must be used to keep the warranty in force. The warranty may also be voided if the product is modified or altered in any way not approved, in writing, by Stellar.

Warranty Limitations/Responsibilities

The owner/operator is responsible for furnishing proof of the date of original purchase of the Stellar product in question. Warranty registration is the ultimate responsibility of the owner and may be accomplished by the completion of the Stellar product registration card provided with the product. If the owner is not sure of registration, he is encouraged to contact Stellar at the address below to confirm registration of the product in question. This warranty covers only defective material and workmanship. It does not cover depreciation or damage caused by normal wear and tear, accident, mishap, untrained operators, or improper or unintended use. The owner has the obligation of performing routine care and maintenance duties as stated in Stellar's written instructions, recommendations, and specifications. Any damage resulting from owner/operator failure to perform such duties shall void the coverage of this warranty. The owner will pay the cost of labor and supplies associated with routine maintenance.

The only remedies the owner has in connection with the breach or performance of any warranty on the Stellar product specified are those set above. In no event will Stellar, the Stellar distributor/dealer, or any company affiliated with Stellar be liable for business interruptions, costs of delay, or for any special, indirect, incidental, or consequential costs or damages. Such costs may include, but are not limited to, loss of time, loss of revenue, loss of use, wages, salaries, commissions, travel time, mileage, lodging, meals, towing, hydraulic fluid, or any other incidental cost.

All products purchased by Stellar from outside vendors shall be covered by the warranty offered by that respective manufacturer only. Stellar does not participate in, or obligate itself to, any such warranty.

Stellar reserves the right to make changes in design or improvement upon its products without imposing upon itself the same upon its products theretofore manufactured.

This warranty will apply to all Stellar Cranes, Stellar Hooklift Hoists, Stellar Cable Hoists, Stellar Container Carriers, Stellar Service Trucks, and Stellar Tarper Systems shipped from Stellar's factory after February 1st, 2015. The warranty is for the use of the original owner only and is not transferable without prior written permission from Stellar.

THIS WARRANTY IS EXPRESSLY IN LIEU OF ANY OTHER WARRANTIES, EXPRESS OR IMPLIED, INCLUDING ANY WARRANTY OF MERCHANTABILITY OR FITNESS FOR A PARTICULAR PURPOSE. REMEDIES UNDER THIS WARRANTY ARE LIMITED TO THE PROVISION OF MATERIAL AND SERVICES, AS SPECIFIED HEREIN. STELLAR INDUSTRIES, INC. IS NOT RESPONSIBLE FOR INCIDENTAL OR CONSEQUENTIAL DAMAGES.

Product Warranty - Six Years with Unlimited Mileage

The Knapheide Manufacturing Company (hereinafter referred to as “Knapheide”) guarantees the Service Body, KUV Body, Crane Body, Line Body, Combo Body, KnapKap, KnapPack and Toolbox sheet metal components will not “rust-through” as defined below. Knapheide branded NXG door latches (black nylon pan and chrome handle), lock cylinders, and standard door hinges are guaranteed not to fail to operate due to a mechanical failure, and standard compartment shelving is guaranteed not to bend under the rated load of 250 pounds for a period of six years with unlimited mileage.

Product Warranty - Three Years or 36,000 Miles, Whichever Occurs First

Knapheide guarantees the Platform Body, Gooseneck Body, Dump Body, and Forestry Body will not “rust-through” as defined below. Knapheide guarantees the Service Body, KUV Body, Crane Body, Line Body, KnapKap, KnapPack, Toolbox, Platform Body, Gooseneck Body, Dump Body, Forestry Body and the Knapheide power locking (E-lock) system and hydraulic hoist (Knaphoist) to be free from defects in material and and/or workmanship for a period of three years or 36,000 miles, whichever occurs first.

Warranty Coverage Duration and Limitation

The warranty period begins on the date of purchase by the end-user, or one year from the date the product is shipped from Knapheide, whichever occurs first. This warranty is valid for product shipped from Knapheide after January 1, 2020 and remains mounted upon the chassis it was originally installed, as solely determined by Knapheide. Knapheide will pay the cost of material and labor to repair or replace the defective product and reserves the sole right to inspect product claimed for warranty and determine the best course of action to remedy the warranty claim.

Exclusions from Warranty

1. Product not installed by an authorized Knapheide distributor or agent.
2. All accessions (additions, add-on attachments, etc.) to the product not manufactured by Knapheide.
3. Stainless steel latches or riveted-on latches, all non-NXG Knapheide branded latches.
4. All product repairs, modifications and alterations performed without written authorization of Knapheide.
5. Products exhibiting damages or fatigue fractures due to accident, misuse, abuse, neglect, overloading, improper installation, severe off-road applications or twisting loads induced by cranes or aerial devices.
6. Products not maintained per Operation & Maintenance Manual.
7. Products sold by Knapheide but not manufactured by Knapheide (i.e. cranes, aerial lifts, lift gates, generators, compressors, pumps, hydraulic or pneumatic reservoirs etc.) Note: These products are covered exclusively by the product manufacturer’s warranty in effect at the time of delivery, if any.
8. Paint, decals, or any finish (collectively “finish”) not applied by Knapheide. Finish deterioration caused by chemical reactions including, but not limited to, acid rain, industrial fallout or improper cleaning materials. Provided, however, that as limited above, Knapheide warrants the product finish applied by Knapheide for one year from the beginning of the warranty period.
9. “Rust-through” of products for which the finish was not applied by Knapheide or an authorized agent, or where the product was used to transport corrosive materials. Note: “rust-through” is defined as corrosion that has created a hole through the metal.
10. Products purchased or used outside the U.S.A. and Canada.



BID FORM

FY 2024-2025 RFP 24-08 1 – UTILITY LIFT STATION MAINTENANCE CRANE TRUCK

RETURNDATE: June 26, 2024
RETURN TO: Office of the Town Clerk
Attn: RFP 24-08
Town of Dundee
P.O. Box 1000
202 East Main Street
Dundee, Florida 33838

ITEM	QTY	UNIT	UNIT COST (\$)	TOTAL COST (\$)
1. 2023 F-550 SUPER CAB	1		\$178,392.05	\$178,392.50
2. 4X4 DIESEL WITH KNAPHEIDE				
3. KMT MECHANICS CRANE				
4. BODY				
5.				
6. TRUCK IS IN STOCK AND READY TO DELIVER				
7. I WILL HAVE TO HAVE KNAPHEIDE ADD THE BOOM TIP LIGHT				
8. THE ETA IS TWO WEEKS ON ADDING THE LIGHT AND IS INCLUDED IN QUOTE				
TRUCK WILL HAVE A 19 GALLON AIR TANK ONLY YOU DO HAVE AIR ON DEMAND				
			TOTAL (\$)	\$178,392.05

Bid Alternate

ITEM	QTY	UNIT	UNIT COST (\$)	TOTAL COST (\$)
1.				
2.				

ALL BID FORMS SHOULD INCLUDE THE FOLLOWING INFORMATION:

Company Submitting Bid: Jarrett-Gordon Ford Davenport

Company Address: 2600 Access Rd NW

Company City: Davenport

State: FL Zip: 33837

Company Phone Number: 863-422-1167

Fax Number: wayneaeschlman@jarrettford.com

Authorized Representative: Wayne Aeschliman

Signature: Wayne Aeschliman

Date: 06/17/24

Print Name: Wayne Aeschliman

Phone Number: 863-450-0080 Cell

Title: COMMERCIAL SALES MGR

NOTE: THE FAILURE TO FOLLOW THE BID PROTEST PROCEDURE REQUIREMENTS WITHIN THE TIME FRAMES PRESCRIBED HEREIN AS ESTABLISHED BY THE TOWN OF DUNDEE, FLORIDA, SHALL CONSTITUTE A WAIVER OF BIDDERS PROTEST AND ANY RESULTING CLAIMS.

CERTIFICATION OF DRUG-FREE WORKPLACE

I Wayne Aeschliman (“Undersigned”), certify that:

- (1) Undersigned is COMMERCIAL SALES MGR (insert job title) and duly authorized to act on behalf of the Contractor JARRETT GORDON FORB that submitted the attached bid.
- (2) Undersigned acknowledges that Preference shall be given to businesses with drug-free workplace programs.
- (3) Undersigned acknowledges that whenever two (2) or more bids which are equal with respect to price, quality, and service are received by the Town for the Purchasing of commodities or contractual services, a bid received from a business that certifies that it has implemented a drug-free workplace program shall be given preference in the award process.
- (4) In order to have a drug-free workplace program, a business shall:
 - (a) Publish a statement notifying employees that the unlawful manufacture, distribution, dispensing, possession, or use of a controlled substance is prohibited in-the workplace and specifying the actions that will be taken against employees for violations of such prohibition.
 - (b) Inform employees about the dangers of drug abuse in the workplace, the business's policy of maintaining a drug-free workplace, any available drug counseling, rehabilitation, and employee assistance programs, and the penalties that may be imposed upon employees for drug abuse violations.
 - (c) Give each employee engaged in providing the commodities or contractual services that are under bid a copy of the statement specified in subsection (a).
 - (d) In the statement specified in subsection (a), notify the employees that, as a condition of working on the commodities or contractual services that are under bid, the employee will abide by the terms of the statement and will notify the employer of any conviction of, or plea of guilty or nolo contendere to, any violation of Chapter 893 of the Florida Statutes or of any controlled substance law of the United States or any state, for a violation occurring in the workplace no later than five (5) days after such conviction.
 - (e) Impose a sanction on, or require the satisfactory participation in a drug abuse assistance or rehabilitation program if such is available in the employee's community, by any employee who is so convicted.
 - (f) Make a good faith effort to continue to maintain a drug-free workplace through implementation of this section.

The Undersigned, as the person authorized to sign this CERTIFICATION OF DRUG-FREE WORKPLACE, does hereby certify that the Contractor, Jarrett-Gordon Ford Davenport, acknowledges, understands, and complies fully with the above requirements.

DATE: 06/17/24 NAME OF ENTITY: Jarrett-Gordon Ford Davenport

PHONE/FAX: 863-422-1167 Office 863-450-0080 Cell

ADDRESS: 2600 Access Rd NW

Davenport FL 33837

SIGNATURE: 

PRINT NAME: Wayne Aeschliman

AFFIDAVIT CERTIFICATION
IMMIGRATION LAWS

THE TOWN OF DUNDEE, FLORIDA, WILL NOT INTENTIONALLY AWARD TOWN CONTRACTS TO ANY CONTRACTOR WHO KNOWINGLY EMPLOYS UNAUTHORIZED ALIEN WORKERS, CONSTITUTING A VIOLATION OF THE EMPLOYMENT PROVISIONS CONTAINED IN 8 U.S.C. SECTION 1324 a(e) AND/OR SECTION 274A(e) OF THE IMMIGRATION AND NATIONALITY ACT ("INA").

THE TOWN OF DUNDEE, FLORIDA, MAY CONSIDER THE EMPLOYMENT BY ANY CONTRACTOR OF UNAUTHORIZED ALIENS A VIOLATION OF SECTION 274A(e) OF THE INA. **SUCH VIOLATION BY THE RECIPIENT OF THE EMPLOYMENT PROVISIONS CONTAINED IN SECTION 274A(e) OF THE INA SHALL BE GROUNDS FOR UNILATERAL CANCELLATION OF THE CONTRACT BY THE TOWN OF DUNDEE.**

BIDDER ATTESTS THAT THEY ARE FULLY COMPLIANT WITH ALL APPLICABLE IMMIGRATION LAWS (SPECIFICALLY TO THE 1986 IMMIGRATION ACT AND SUBSEQUENT AMENDMENTS).

Company Name Jarrett-Gordon Ford Davenport

Signature Wayne Aeschliman Date: 06/17/24

Printed Name Wayne Aeschliman

Title COMMERCIAL SALES MGR

PRIVATE PROVIDER FIRM _____

THIS SECTION TO BE COMPLETED BY A NOTARY PUBLIC:

STATE OF Florida COUNTY OF Polk

SWORN TO AND SUBSCRIBED BEFORE ME THIS 18 DAY OF June, 2024

NOTARY PUBLIC: CHECK ONE PERSONALLY KNOWN TO ME ☒ Produced I.D. _____

TYPE OF ID PRODUCED _____

SIGN: Ryan Devlin

PRINT: Ryan Devlin



NONCOLLUSION AFFIDAVIT OF BIDDER

State of Florida

County of Polk

Wayne Aeschliman

I _____ ("Affiant"), being first duly sworn, deposes and says that:

- (1) Affiant is COMMERCIAL SALES MGR (insert job title) of Jarrett-Gordon Ford Davenport (insert name of company) the bidder that submitted the attached bid;
- (2) Affiant is fully informed respecting the preparation and contents of the attached bid and of all pertinent circumstances respecting such bid;
- (3) Such bid is genuine and is not a collusive or sham bid;
- (4) Neither the said Affiant nor any of his/her/its officers, partners, owners, agents, representatives, employees or parties in interest, including Affiant, has in any way colluded, conspired, connived or agreed, directly or indirectly with any other bidder, firm or person to submit a collusive or sham bid in connection with the Contract for which the attached bid has been submitted or has refrained from bidding in connection with such Contract; nor in any manner, directly or indirectly, sought by agreement or collusion or communication or conference with any other bidder, firm or person to fix the price or prices in the attached bid or of any other bidder; nor has fixed any overhead, profit or cost element of the bid price, or the bid price of any other bidder; nor has secured through any collusion, conspiracy, connivance or unlawful agreement, any advantage against the Town of Dundee or any person interested in the proposed Contract; and
- (5) The price or prices quoted in the attached bid are fair and proper and are not tainted by any collusion, conspiracy, connivance or unlawful agreement on the part of the Affiant or any of its agents, representatives, owners, employees, or parties in interest.

THIS SECTION TO BE COMPLETED BY A NOTARY PUBLIC:

STATE OF Florida COUNTY OF Polk

SWORN TO AND SUBSCRIBED BEFORE ME THIS 17th DAY OF June, 20 24

NOTARY PUBLIC: CHECK ONE PERSONALLY KNOWN TO ME ☒ Produced I.D. _____

TYPE OF ID PRODUCED _____

SIGN: _____

PRINT: _____

