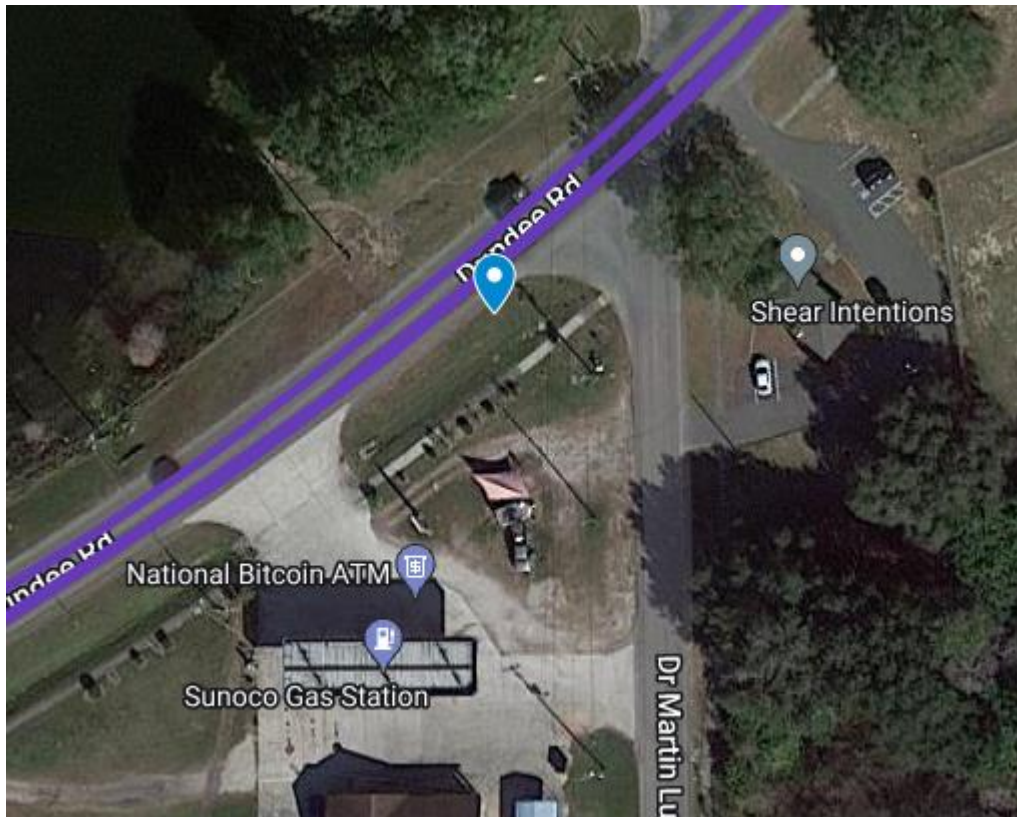


DUNDEE STOP REQUESTS

DUNDEE RD. AND DR. MARTIN LUTHER KING ST SW.

Staff does not recommend a stop at this intersection due to a drainage ditch in the area (see Exhibit A) that would be a hindrance to ADA compliance. However, we do recommend a stop placement roughly 500 feet east of this location (see Exhibit B). This secondary location already has infrastructure for a sign as well as available space for further development, such as a boarding and alighting pad. Additionally, ADA compliance is not a concern here. Please see Appendices 1-4 for additional photos.



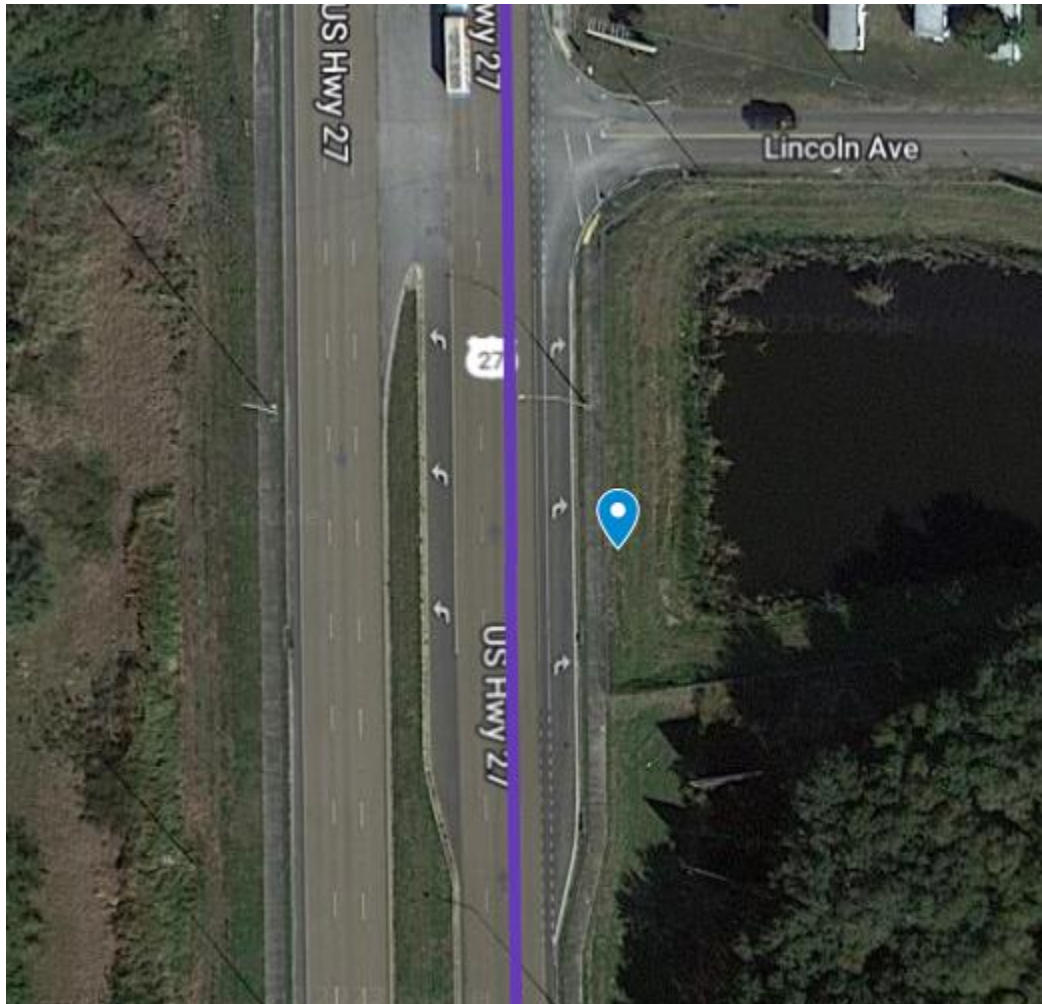
NORTH SCENIC HWY. AND RACE RD.

Staff does not recommend a stop at this location. Due high traffic volume (see Appendix 6), a bend of the road causing a blind curve, as well as current construction on the opposite side of this location, there are several safety concerns involved with this stop. Due to this, staff denies this stop location. However, should conditions change in the future, staff may reconsider this location. Please see Appendices 5-9 for additional photos.



U.S HWY. 27 AND LINCOLN AVE.

Staff recommends denial of this stop location due to safety concerns. Due to the right turn lane along Hwy. 27 and the 50 mph. speed limit, boardings and alightings at this location would be dangerous and could cause an accident. Because of these safety concerns, staff denies this stop location.

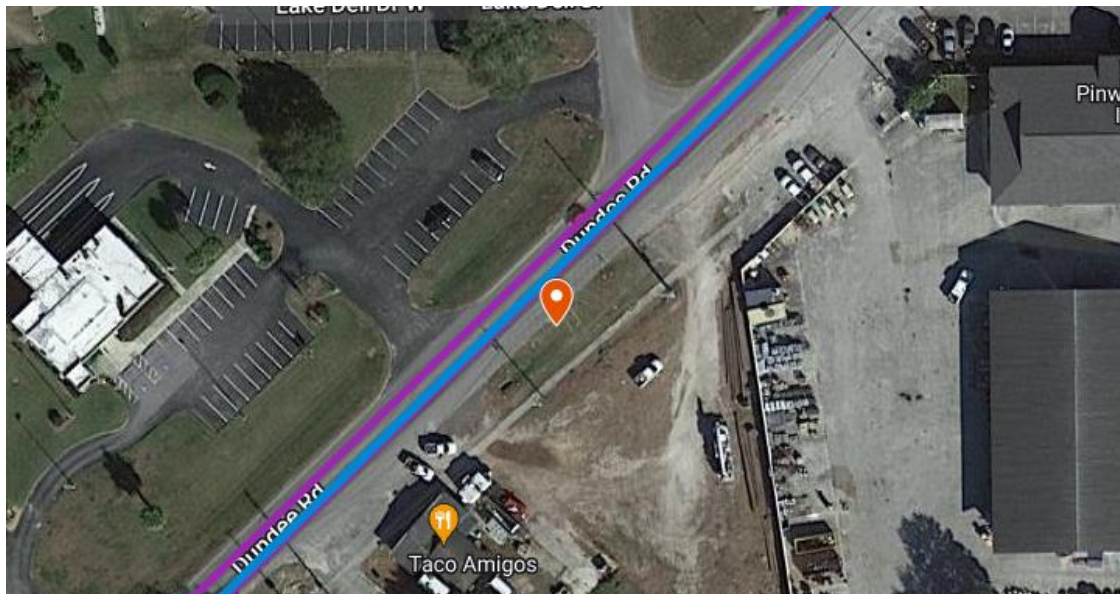


EXHIBITS

Exhibit A



Exhibit B

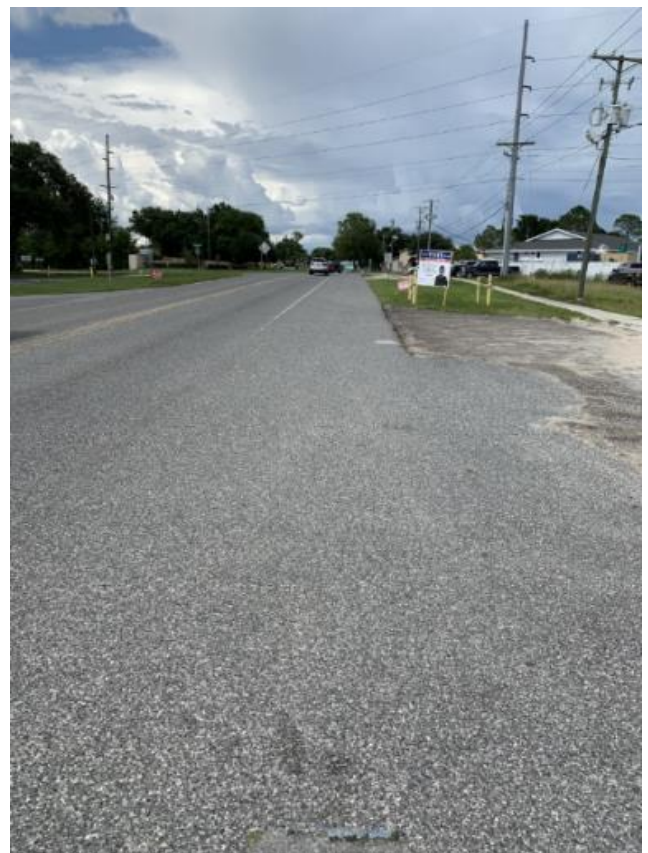


APPENDIX

Appendix 1



Appendix 2



Appendix 3



Appendix 4



Appendix 5



Appendix 6



Appendix 7



Appendix 8



Appendix 9

