

SEE PAGE 2 FOR ENLARGED VIEW OF WORK AREA



*** VMB MESSAGE 7 DAYS PRIOR TO CLOSURE**

CAMP	??/??/??
ENDEAVOR	THRU
CLOSED	??/??/??

*** VMB MESSAGE 7 DAYS PRIOR TO CLOSURE**

LINCOLN	??/??/??
AVE	THRU
CLOSED	??/??/??

*** VMB MESSAGE 7 DAYS PRIOR TO CLOSURE**

SOUTHERN	??/??/??
ROAD	THRU
CLOSED	??/??/??

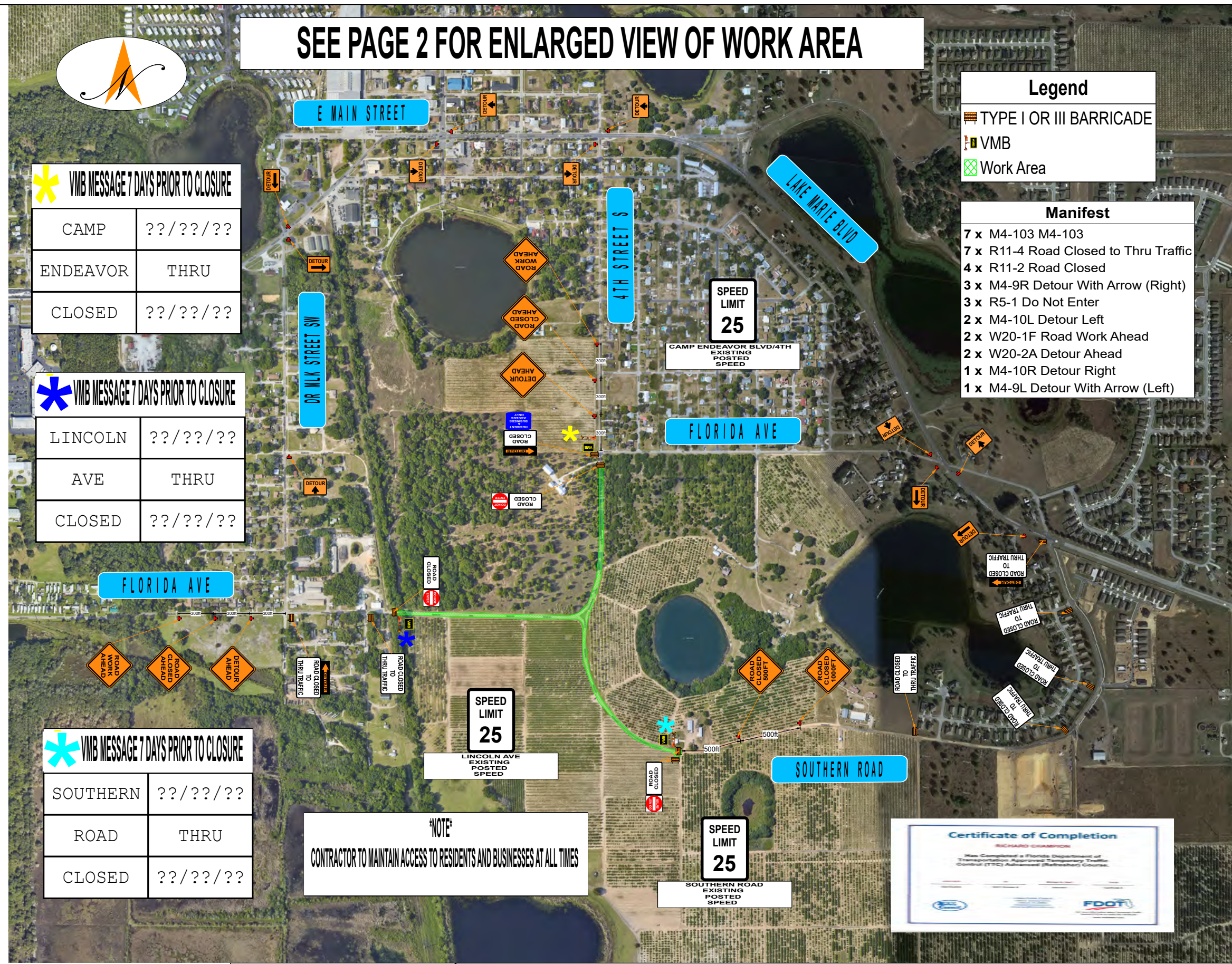
NOTE
CONTRACTOR TO MAINTAIN ACCESS TO RESIDENTS AND BUSINESSES AT ALL TIMES

Legend

- TYPE I OR III BARRICADE
- VMB
- Work Area

Manifest

- 7 x M4-103 M4-103
- 7 x R11-4 Road Closed to Thru Traffic
- 4 x R11-2 Road Closed
- 3 x M4-9R Detour With Arrow (Right)
- 3 x R5-1 Do Not Enter
- 2 x M4-10L Detour Left
- 2 x W20-1F Road Work Ahead
- 2 x W20-2A Detour Ahead
- 1 x M4-10R Detour Right
- 1 x M4-9L Detour With Arrow (Left)



Plan Scale
1 : 1200 (1" = 100')

Date: 02/22/2024 **Author:** FLASH-RITE, INC. **Project:** LINCOLN AVE/CAMP ENDEAVOR BLVD 4TH/SOUTHERN ROAD
Comments: SIGN AND DEVICE SPACING TO FOLLOW FDOT DESIGN STANDARDS 2023/2024

ROAD CLOSURE