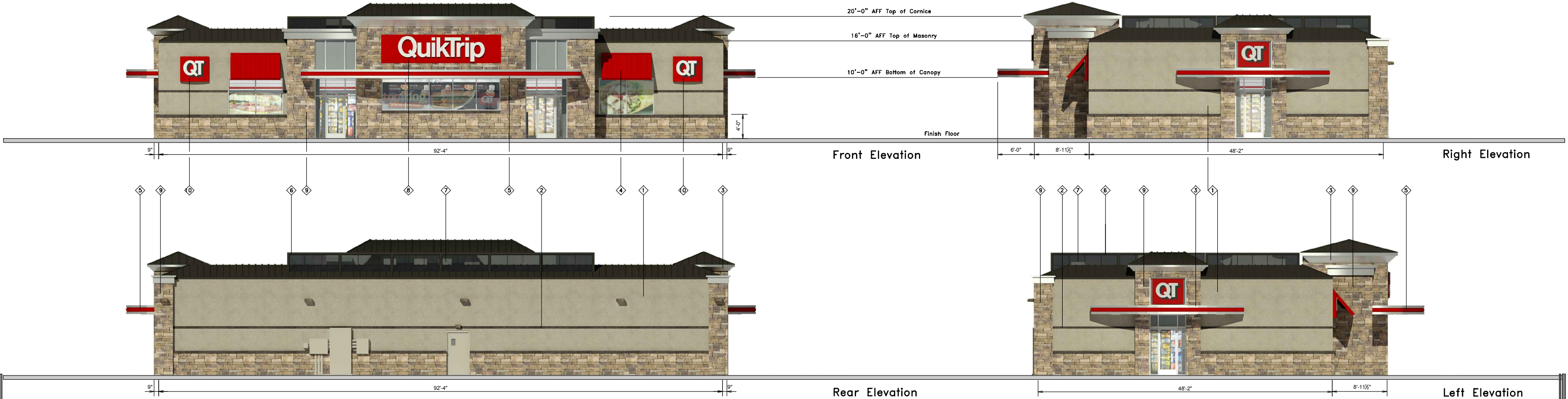



Stone Percentage Table		
	TOTAL	MASONRY
FRONT FACADE:	858 SF	639 SF
PERCENTAGE		75%



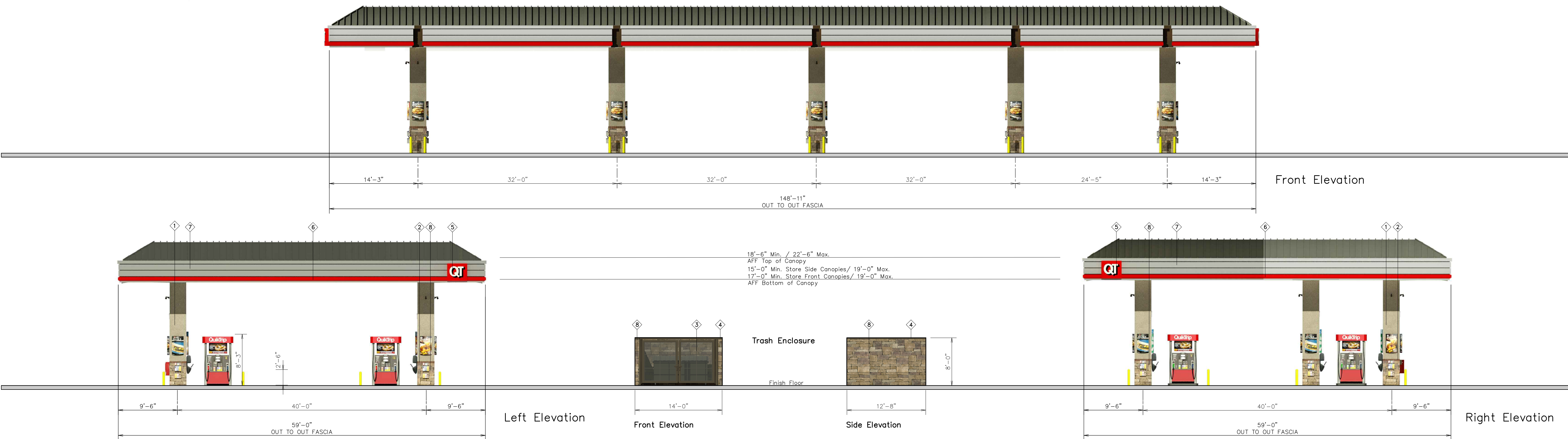


QuikTrip.
4705 South 129th East Ave.
Tulsa, OK 74134-7008
P.O. Box 3475
Tulsa, OK 74101-3475
(918) 615-7700

Store # 4133	G3S Custom w/ Tan Eifs, Hip Roofs, Additional front glazing, & Stacked Stone	Address: SEC Sawyer Ranch Rd & Hwy 290	City, State: Dripping Springs, TX
Serial # 82-4133-G3S2	Scale: 1/16"=1'-0"	Issue Date: 12.18.17	Drawn By: JK
		Rev/Notes:	
COPYRIGHT © 2011 QUIKTRIP CORPORATION DESIGN PATENTS QUIKTRIP PLANS ARE THE EXCLUSIVE PROPERTY OF QUIKTRIP CORPORATION, TULSA, OKLAHOMA. THESE PLANS ARE PROTECTED IN THEIR ENTIRETY BY DOMESTIC AND INTERNATIONAL COPYRIGHT AND PATENT STATUTES. ANY UNAUTHORIZED USE, REPRODUCTION, PUBLICATION, DISTRIBUTION OR SALE IN WHOLE OR IN PART, IS STRICTLY FORBIDDEN.			

①	FINISH	MANUFACTURER	SPECIFICATION
1	WHEAT	STO	A100G EIFS
2	MIDNIGHT	INTERSTATE BRICK	ATLAS STRUCTURAL BRICK
3	HLZ ALUMINUM	ALPOLIC	FASCIA
4	QT RED	LANE	STANDING SEAM AWNING
5	RED POLYCARBONATE	ALLEN INDUSTRIES	ILLUMINATED BAND
6	DARK BRONZE	LANE	METAL PAINT
7	BLACK	ALL COURT FABRICS	POLYPRO 95 MESH
8	CL-60R (Custom)	ALLEN INDUSTRIES	SIGNAGE
9	SOKOMA	GLEN GERY	STACKED STONE
10	IDB-20	ALLEN INDUSTRIES	ILLUMINATED SIGNAGE

[Signature]



QuikTrip.

4705 South 129th East Ave.
Tulsa, OK 74134-7008
P.O. Box 3475
Tulsa, OK 74101-3475
(918) 615-7700

Store #
4133

Custom Gas Canopy w/ Tan Eifs, &
Sonoma Stacked Elevations

Serial #
82-4133-GD09

Scale:
1/8"=1'-0"

Issue Date:
03.07.19

Address:
SEC Sawyer Ranch Rd & Hwy 290

City, State:
Dripping Springs, TX

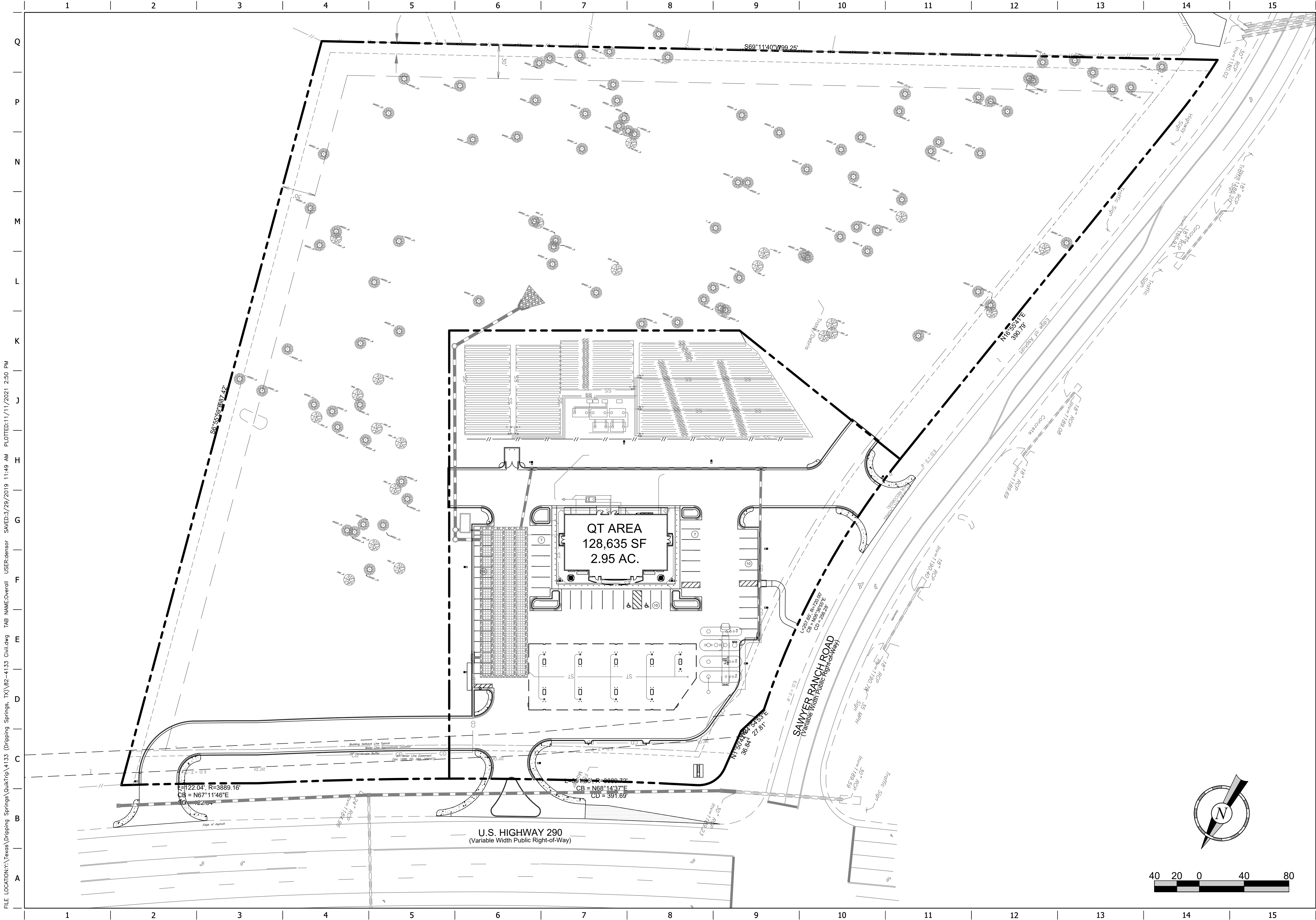
Drawn By:
JK

Rev/Notes:

COPYRIGHT © 2011 QUIKTRIP CORPORATION DESIGN PATENTS
QUIKTRIP PLANS ARE THE EXCLUSIVE PROPERTY OF QUIKTRIP CORPORATION, TULSA,
OKLAHOMA. THESE PLANS ARE PROTECTED IN THEIR ENTIRETY BY DOMESTIC AND
INTERNATIONAL COPYRIGHT AND PATENT STATUTES. ANY UNAUTHORIZED USE, REPRODUCTION,
PUBLICATION, DISTRIBUTION OR SALE IN WHOLE OR IN PART, IS STRICTLY FORBIDDEN.

①	FINISH	MANUFACTURER	SPECIFICATION
1	WHEAT	STO	AT00G EIFS
2	MIDNIGHT	INTERSTATE BRICK	ATLAS STRUCTURAL BRICK
3	BLACK	ALL COURT FABRICS	POLYPRO 35 MESH
4	DARK BRONZE	CANE	WEAL/PAINI
5	IDC-9	ALLEN INDUSTRIES	ILLUMINATED SIGNAGE
6	RED POLYCARBONATE	ALLEN INDUSTRIES	ILLUMINATED BAND
7	ELC-ALUMINUM	ALPOLIS	CANOPY
8	SONOMA	GLEN GERY	STACKED STONE

FILE LOCATION: \\Texas\QuikTrip\4133 (Dripping Springs, TX)\82-4133 Civil.dwg TAB NAME: Overall USER: dendor SAVES: 3/25/2019 11:49 AM PLOTTED: 11/11/2021 2:50 PM



ISSUE DATE: 03/08/2019

FREELAND and KALFMAN, INC.

2500 West 11th Street, Suite 200
Dripping Springs, Texas 78624
Phone: 512-265-1000

TEXAS REGISTERED
ENGINEERING
FIRM #0591

QuikTrip No. 4133

SEC OF HWY 290 & SAWYER RANCH ROAD
DRIPPING SPRINGS, TX

© COPYRIGHT QUIKTRIP CORPORATION 2011
ANY UNAUTHORIZED USE, REPRODUCTION,
PUBLICATION, DISTRIBUTION, OR SALE IN
WHOLE OR IN PART, IS STRICTLY FORBIDDEN.

REV	DATE	DESCRIPTION

ORIGINAL ISSUE DATE:

SHEET TITLE:

OVERALL PLAN

SHEET NUMBER:

C101