

NO.	DESCRIPTION	BY	DATE

DATE	DESCRIPTION



DATE: 10/11/2022
 DRAWN: PHASE 8 PLAT 08
 CHECKED BY: [Blank]
 DESIGNED BY: [Blank]

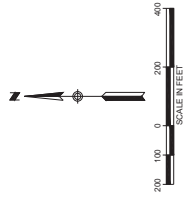
PROJECT: PARTEN RANCH PHASE 8
 FROM: 512.439.4716
 FIRM: F-1398

LA Engineering, Inc.
 1500 Ross Boulevard
 Austin, Texas 78735

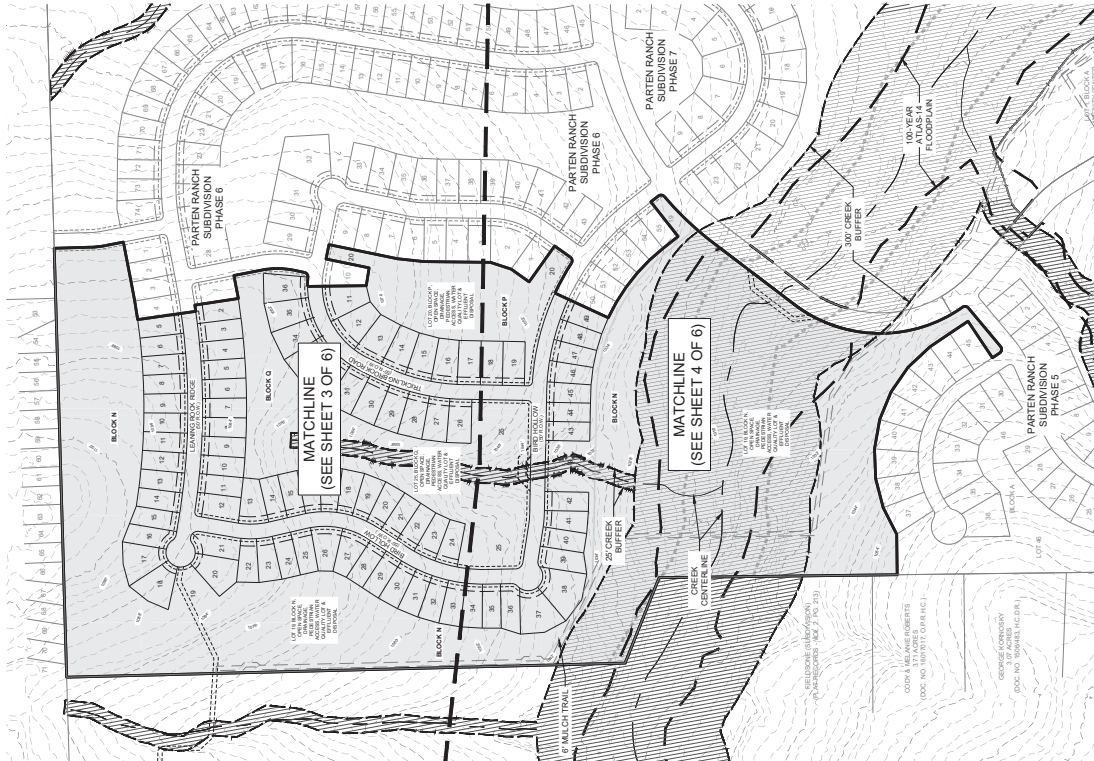
JOB NUMBER: A311-0413

SHEET NO. 2

OF 6 SHEETS



- LEGEND**
- PROPOSED BOUNDARY
 - - - 10' P. U.E.
 - - - BUILDING SETBACK
 - - - CREEK BUFFER
 - ▨ 100 YR FLOODPLAIN - CALCULATED (ATLAS-14 PRECIPITATION)



NO.	DESCRIPTION	BY	DATE

DATE:	11/02/22
DESIGNED BY:	DANIEL B. HANNA
CHECKED BY:	DANIEL B. HANNA
DRAWING NAME:	PRELIMINARY PLAT

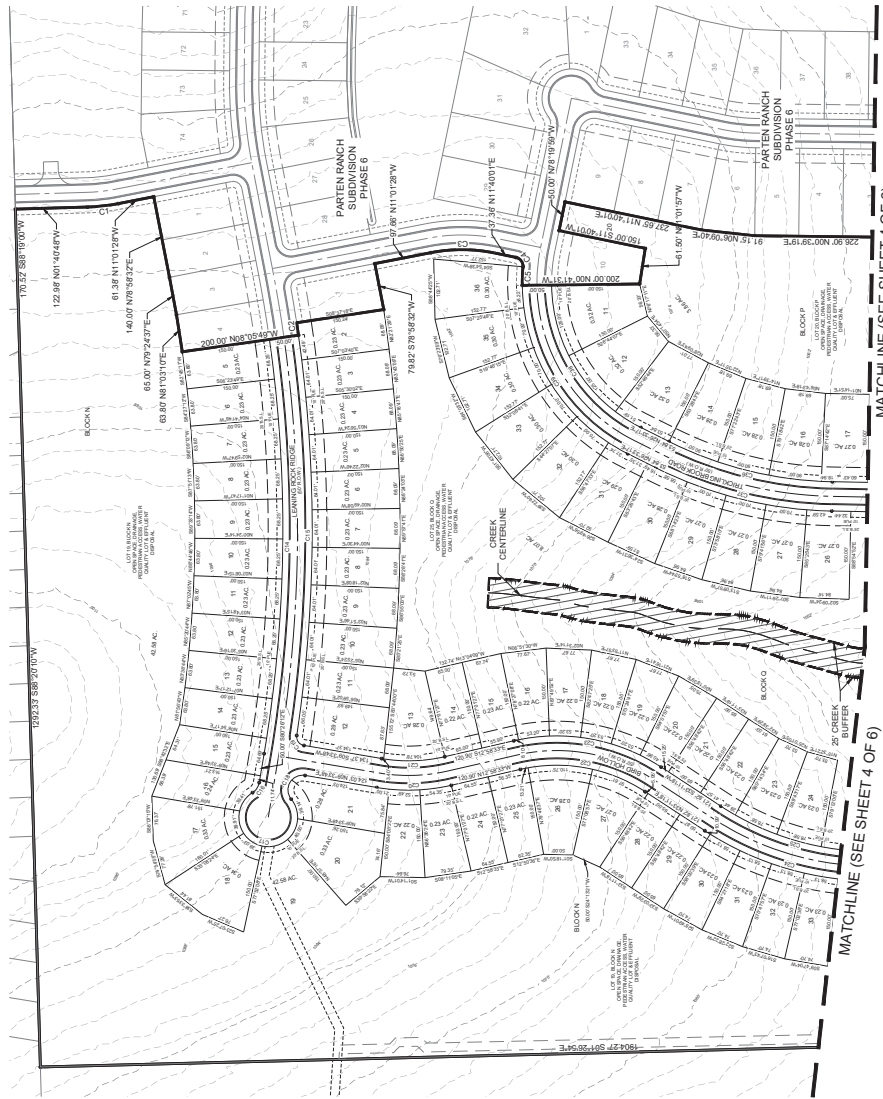


LA Engineering, Inc.
1500 Roubidoux
Austin, Texas 78735
Phone: 512.439.4710
Fax: 512.439.4716
Firm E-1398

LEGEND

- PROPOSED BOUNDARY
- - - 10' P.U.E.
- - - BUILDING SETBACK
- - - CREEK BUFFER
- ▨ 10 YR FLOOD, AIR-CALCULATED (ATLAS-14 PRECIPITATION)

SCALE IN FEET
0 50 100 200



MATCHLINE (SEE SHEET 4 OF 6)

MATCHLINE (SEE SHEET 4 OF 6)

11/21/2022 10:47:13 AM Part 8 Prelim Plat from Phase 8 Preliminary Plat - 08/24/22
 User: dhananna
 Job Number: A311-0413
 Job Name: Part 8 Prelim Plat from Phase 8 Preliminary Plat - 08/24/22

NO.	REVISION	BY	DATE

DATE:	07/14/2022
DESIGNED BY:	DANIEL BRYAN
CHECKED BY:	
DRAWN BY:	
PROJECT NAME:	PARTEN RANCH PHASE 8

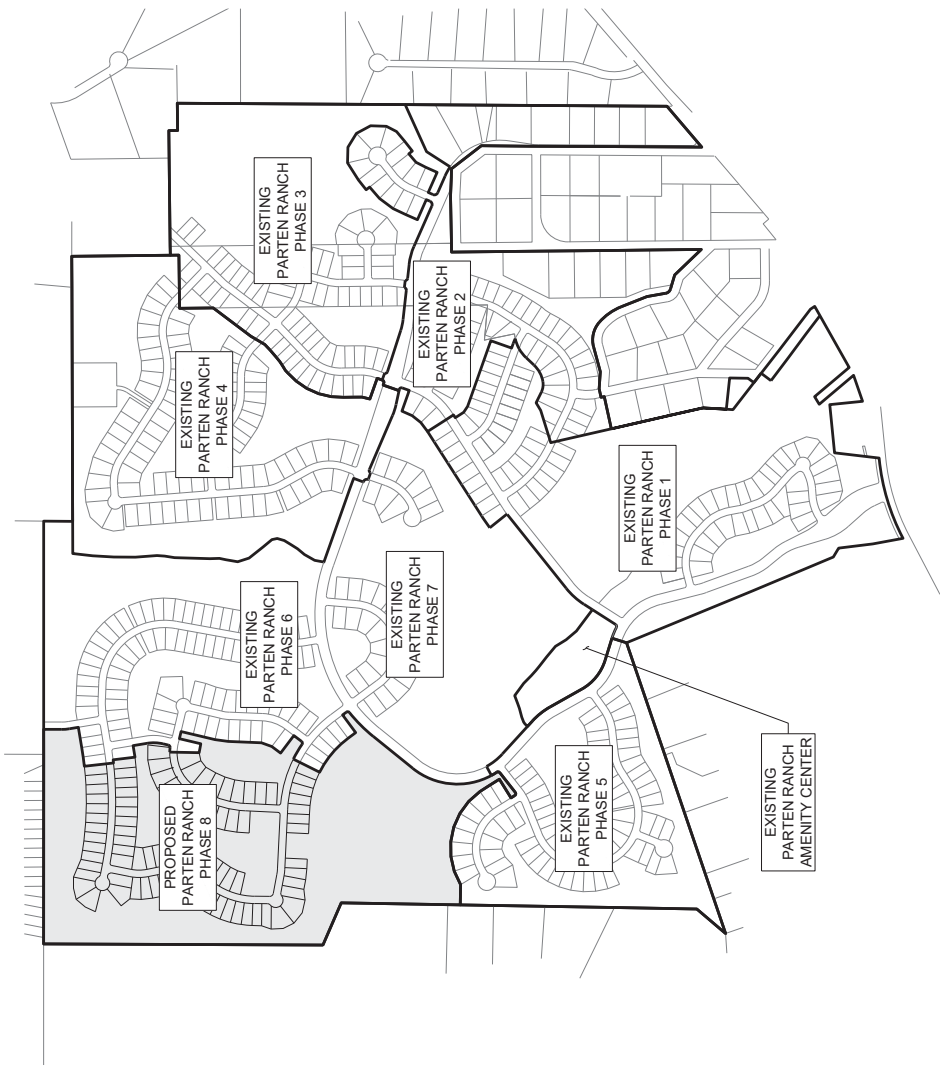
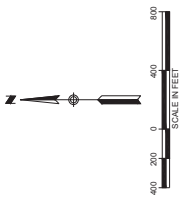


FROM: 512.439.4716
FAX: 512.439.4716
FIRM: F-1398

LJA Engineering, Inc.
1500 Ross Boulevard
Austin, Texas 78735

JOB NUMBER: A311-0413
SHEET NO. 9

OF 6 SHEETS



LJA Engineering, Inc. is not responsible for the accuracy of the information provided on this drawing. The user of this drawing is responsible for verifying the accuracy of the information provided on this drawing. LJA Engineering, Inc. is not responsible for the accuracy of the information provided on this drawing. The user of this drawing is responsible for verifying the accuracy of the information provided on this drawing.