



DRIPPING SPRINGS
Texas



Water & Wastewater Utility

Dane Sorensen
Utility Director

Purpose / Mission Statements

Role of the City:

- To provide uninterrupted water and wastewater services to City customers in compliance with local and state regulations.
- To develop and expand current system and capacities.
- Respond to emergencies; over 400 hours of overtime for FY25.



Utilities Department Staff

Director/Department Head - Dane Sorensen

Utility Operation Manager - Gray Lahrman

Utility Lead Operator - Christopher Wieting

Utility Operator - Wacey Henager

Utility Operator - Anthony Pennell

Utility Operator - Tyler Lloyd

Utility Operator – Jeffrey Gatlin

Utility Maintenance Worker – Bill Stevens

City Electrician- Joseph Sell

Public Works Admin Assistant – Micaela Betts



Services

- 184 water customers
- 2,611 wastewater customers
- CSI Inspections; 93 for FY25
- 482,000 gpd capacity over three treatment plants
- Providing up to 250,000 gpd of potable water across three subdivisions
- Reuse water for irrigation at City Parks and select subdivisions



Facilities Managed

Wastewater Treatment Facilities:

- South Regional Wastewater Treatment Facility;
319,000 gallons/day
 - South Regional Drip Field; 30 Acres
- Arrowhead Ranch Wastewater Treatment Facility
85,000 gallons/day
 - Arrowhead Drip Field; 30 Acres
- Big Sky Ranch Wastewater Treatment Facility;
78,800 gallons/day
 - Big Sky Ranch Drip Field; 18 Acres



Lift Stations:

- South Regional Lift Station
- Arrowhead Ranch WWTP Lift Station
- Lift Station 1 – Hays Street
- Lift Station 2 – DSISD
- Lift Station 3 – Caliterra
- Lift Station 4 – Arrowhead Ranch Subdivision
- Lift Station 5 – DSRP
- Lift Station 6 – Big Sky 1
- Lift Station 7 – Big Sky 2



FY2025 Projects

Arrowhead Drip Field Expansion

Automation of Reuse System

SCADA

Howard Ranch Effluent Fill Station

Driftwood Effluent Line

Big Sky Wastewater Treatment Plant

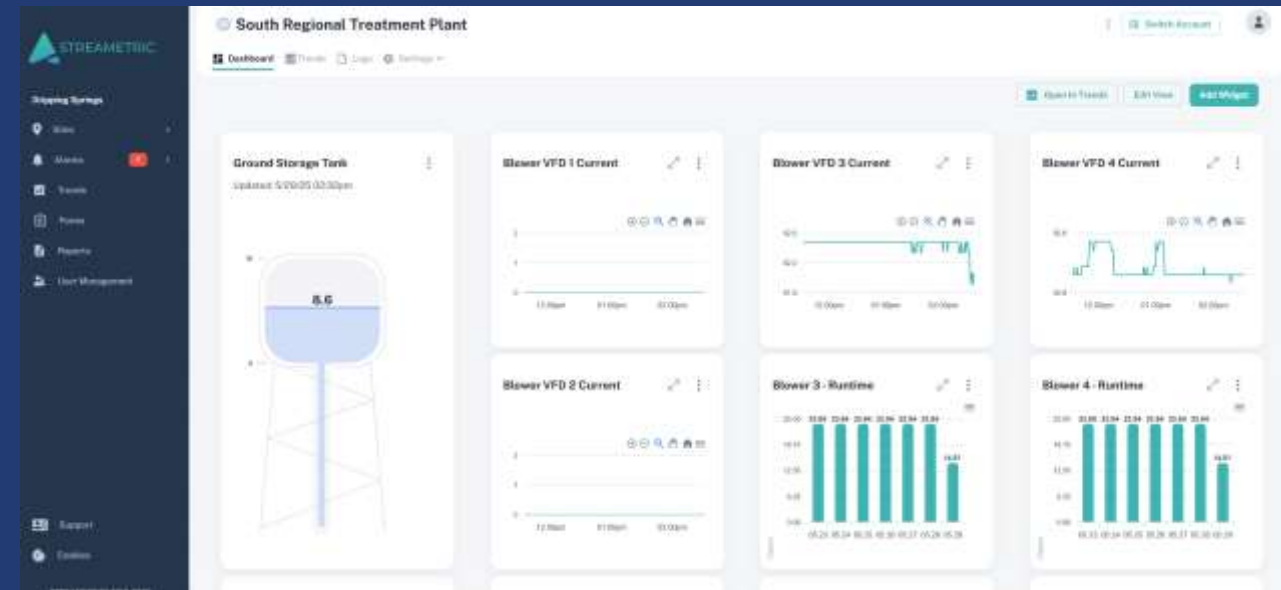
Conveyance of Four Phases of Development

Drought Contingency Updates

Public Water System Activation

Water and Wastewater Rate Study

Bid for Discharge Plant



Upcoming FY2026



Coming Soon!

- Start construction on Discharge Plant & West Interceptor
- Adding approximately 150 water connections and approximately 300 sewer connections
- Potentially six developments conveying phases of construction
- Development of GIS
- Development of Asset Management / Operations and Maintenance Plan
- In-house cleaning of lift stations and sewer mains
- Hire utility inspector to enforce City Ordinances, drought policies and to help with system conveyance

Questions?