

MATCHLINE SHEET 2

ASHTON AUSTIN RESIDENTIAL, LLC
A
CALLED 84.00 ACRES (TRACT 1)
CALLED 12.476 ACRES (TRACT 2)
DOC. NO. 21042533
O.P.R.H.C.T.

MERAGE HOMES OF TEXAS, LLC
CALLED 8.787 ACRES
DOC. NO. 21069284
O.P.R.H.C.T.

WILD RIDGE BOULEVARD (14' R.O.W.)
N18716.01°E 550.66'

PHILIP A. SMITH SURVEY NO. 26
ABSTRACT NO. 415

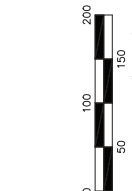
C.H. MALOTT SURVEY
ABSTRACT NO. 693

CANNON FAMILY, LTD.
"SHARE NUMBER TWO"
CALLED 277.23 ACRES
VOL. 186, PG. 151
D.P.R.H.C.T.

ORYX CANNON 58, LLC
REMANUER OF
CALLED 58.000 ACRE TRACT
DOC. NO. 21023358
O.P.R.H.C.T.

CITY OF DRIPPING SPRINGS
CALLED 3.749 ACRES
DOC. NO. 21023358
O.P.R.H.C.T.

U.S. HIGHWAY 280
(VARIABLE WIDTH R.O.W.)



REFERENCE TO NGS GPS
POINT B 002
GRID NORTH: 13,982.114'
GRID EAST: 2,260.225'
GRID ELEV.: 1,227.22'

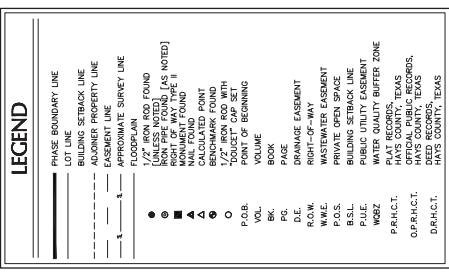
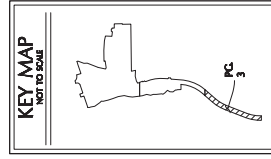
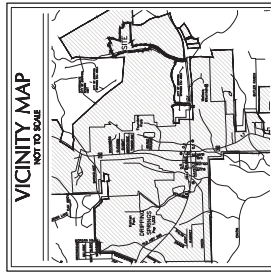
ENGINEER:
DOUCET AND ASSOCIATES
7401 B HIGHWAY 71 WEST, SUITE 160
AUSTIN, TX 78735

SURVEYOR:
DOUCET AND ASSOCIATES
7401 B HIGHWAY 71 WEST, SUITE 160
AUSTIN, TX 78735

BEARING BASIS: BASED ON THE TEXAS COORDINATE SYSTEM, SOUTH
CENTRAL ZONE (2004), MAPS (2011). ALL DISTANCES ARE ADJUSTED TO
SURFACE USING A SURFACE ADJUSTMENT FACTOR OF 1.000077936.

UTILITY NOTE:
THE SURVEYOR MAKES NO GUARANTEES THAT THE UTILITIES SHOWN
HEREON ARE THE EXACT UTILITIES. THE SURVEYOR HAS CONDUCTED VISUAL
INSPECTIONS OF THE SURVEY AREA AND HAS OBSERVED THE UTILITIES
SHOWN HEREON ARE IN THE EXACT LOCATION INDICATED (UTILITIES
SHOWN HEREON MAY BE EXAGGERATED FOR GRAPHIC REPRESENTATION
ACCURACY AS POSSIBLE FROM INFORMATION AVAILABLE. THE SURVEYOR
HAS NOT PHYSICALLY LOCATED THE UNDERGROUND UTILITIES ONLY THE
VISIBLE ABOVE GROUND UTILITY STRUCTURES.

FLOODPLAIN NOTE:
THIS PROPERTY IS LOCATED WITHIN A DESIGNATED 100
YEAR FLOOD PLAIN AS DELINEATED ON MAP NUMBERS 4820020105F AND
4820020108F, BOTH DATED SEPTEMBER 2, 2005, AS PREPARED BY THE
FEDERAL EMERGENCY MANAGEMENT AGENCY.



LINE TABLE

LINE	BEARING	DISTANCE
L1	S115°09'53\"/>	106.49'
L2	N86°33'25\"/>	146.69'
L3	S76°06'50\"/>	126.96'
L4	S81°02'29\"/>	63.46'
L5	S22°39'05\"/>	134.68'
L6	N89°12'49\"/>	60.08'
L7	S75°03'09\"/>	14.42'
L8	N15°51'51\"/>	80.48'
L9	S15°51'51\"/>	80.48'
L10	S74°08'09\"/>	61.3'
L11	S46°50'08\"/>	62.21'
L12	S62°10'05\"/>	114.01'
L13	S89°10'03\"/>	114.01'
L14	N02°04'33\"/>	1.87'
L15	N30°08'52\"/>	18.63'
L16	N04°12'41\"/>	29.46'
L17	N37°58'31\"/>	81.75'
L18	N03°03'30\"/>	77.47'
L19	N32°35'23\"/>	70.59'
L20	N45°11'02\"/>	97.26'
L21	N33°39'02\"/>	56.75'
L22	N21°34'29\"/>	103.00'
L23	N06°15'51\"/>	139.51'
L24	N00°23'49\"/>	75.11'
L25	N17°52'08\"/>	67.64'
L26	N11°19'38\"/>	104.20'
L27	N17°34'19\"/>	110.33'
L28	N05°54'05\"/>	96.36'
L29	N45°11'02\"/>	97.26'
L30	N10°23'00\"/>	154.36'
L31	N19°23'37\"/>	148.90'
L32	N17°34'19\"/>	110.33'
L33	N14°17'07\"/>	131.27'
L34	N03°58'38\"/>	43.46'
L35	N41°27'27\"/>	51.28'
L36	N35°39'02\"/>	159.05'
L37	N17°34'19\"/>	110.33'
L38	N17°06'33\"/>	30.00'
L39	N00°50'48\"/>	45.20'
L40	N7°04'20\"/>	171.91'
L41	N7°04'20\"/>	90.04'
L42	N18°55'40\"/>	110.93'
L43	N7°04'20\"/>	103.57'
L44	S18°55'40\"/>	110.93'
L45	N47°11'44\"/>	62.27'
L46	S18°03'01\"/>	114.01'
L47	S29°21'23\"/>	26.90'
L48	S21°34'29\"/>	160.00'
L49	S03°37'37\"/>	88.42'
L50	S68°25'31\"/>	39.37'
L51	N81°08'11\"/>	119.32'
L52	N75°23'38\"/>	27.22'
L53	N08°47'09\"/>	63.36'
L54	S77°49'32\"/>	121.23'
L55	S01°52'29\"/>	163.30'
L56	N89°12'49\"/>	50.00'
L57	S00°47'11\"/>	50.00'
L58	N89°12'49\"/>	110.10'
L59	N89°12'49\"/>	15.10'
L60	N21°34'29\"/>	91.33'
L61	S68°25'31\"/>	59.17'
L62	S27°49'54\"/>	46.43'
L63	N27°49'54\"/>	42.53'

LINE TABLE

LINE	BEARING	DISTANCE
L64	N68°25'31\"/>	59.17'
L65	N27°15'45\"/>	16.86'
L66	N27°15'45\"/>	82.03'
L67	N89°12'49\"/>	60.08'
L68	S89°12'49\"/>	4.43'
L69	N89°12'49\"/>	60.08'
L70	S75°03'09\"/>	14.42'
L71	N15°51'51\"/>	80.48'
L72	S15°51'51\"/>	80.48'
L73	S74°08'09\"/>	61.3'
L74	S46°50'08\"/>	62.21'
L75	S62°10'05\"/>	114.01'
L76	S74°08'09\"/>	61.3'
L77	N89°10'03\"/>	114.01'
L78	N02°04'33\"/>	1.87'
L79	S62°10'05\"/>	114.01'
L80	N06°35'10\"/>	17.38'
L81	N62°10'06\"/>	40.18'
L82	N44°24'29\"/>	52.50'
L83	N45°38'15\"/>	65.08'
L84	S86°34'34\"/>	50.87'
L85	S47°52'38\"/>	46.97'
L86	S27°49'54\"/>	46.97'
L87	N27°49'54\"/>	103.00'
L88	S34°09'41\"/>	22.74'
L89	S53°02'06\"/>	75.70'
L90	S68°25'31\"/>	123.06'
L91	N75°15'56\"/>	39.26'
L92	N89°12'49\"/>	38.73'
L93	N89°12'49\"/>	85.00'
L94	S52°29'54\"/>	38.73'
L95	S79°49'32\"/>	38.68'
L96	N87°59'40\"/>	37.58'
L97	N74°41'15\"/>	38.51'
L98	S45°36'50\"/>	94.55'
L99	N74°07'28\"/>	95.14'
L100	N74°07'28\"/>	95.14'
L101	S45°36'50\"/>	94.55'
L102	N74°07'28\"/>	95.14'
L103	S69°29'44\"/>	27.78'
L104	N09°40'52\"/>	124.09'
L105	N07°31'18\"/>	123.34'
L106	N27°49'54\"/>	163.34'
L107	N30°59'53\"/>	70.81'
L108	N27°49'54\"/>	163.34'
L109	N31°42'37\"/>	67.57'
L110	S27°49'54\"/>	126.52'
L111	S27°49'54\"/>	138.86'
L112	N27°49'54\"/>	131.80'
L113	N37°08'20\"/>	15.98'
L114	S37°08'20\"/>	15.98'
L115	S89°11'54\"/>	52.26'

LINE TABLE

LINE	BEARING	DISTANCE
L116	S27°49'54\"/>	15.98'
L117	S89°11'54\"/>	52.26'
L118	N27°49'54\"/>	15.98'
L119	S27°49'54\"/>	15.98'
L120	S89°11'54\"/>	52.26'
L121	N27°49'54\"/>	15.98'
L122	S27°49'54\"/>	15.98'
L123	N27°49'54\"/>	15.98'
L124	S27°49'54\"/>	15.98'
L125	N27°49'54\"/>	15.98'
L126	S27°49'54\"/>	15.98'
L127	N27°49'54\"/>	15.98'
L128	S27°49'54\"/>	15.98'
L129	N27°49'54\"/>	15.98'
L130	S27°49'54\"/>	15.98'
L131	N27°49'54\"/>	15.98'
L132	S27°49'54\"/>	15.98'
L133	N27°49'54\"/>	15.98'
L134	S27°49'54\"/>	15.98'
L135	N27°49'54\"/>	15.98'
L136	S27°49'54\"/>	15.98'
L137	N27°49'54\"/>	15.98'
L138	S27°49'54\"/>	15.98'
L139	N27°49'54\"/>	15.98'
L140	S27°49'54\"/>	15.98'
L141	N27°49'54\"/>	15.98'
L142	S27°49'54\"/>	15.98'
L143	N27°49'54\"/>	15.98'
L144	S27°49'54\"/>	15.98'
L145	N27°49'54\"/>	15.98'
L146	S27°49'54\"/>	15.98'
L147	N27°49'54\"/>	15.98'
L148	S27°49'54\"/>	15.98'
L149	N27°49'54\"/>	15.98'
L150	S27°49'54\"/>	15.98'
L151	N27°49'54\"/>	15.98'
L152	S27°49'54\"/>	15.98'
L153	N27°49'54\"/>	15.98'
L154	S27°49'54\"/>	15.98'
L155	N27°49'54\"/>	15.98'
L156	S27°49'54\"/>	15.98'
L157	N27°49'54\"/>	15.98'
L158	S27°49'54\"/>	15.98'
L159	N27°49'54\"/>	15.98'
L160	S27°49'54\"/>	15.98'
L161	N27°49'54\"/>	15.98'
L162	S27°49'54\"/>	15.98'
L163	N27°49'54\"/>	15.98'

Date: 07/27/2023
Scale: 1" = 100'
Drawn by: SWP
Reviewed: DF
Project: 689-005
Sheet: 3 OF 4
Field Book: N/A
Party Chief: ADM
Survey Date: 09/14/2020
IPFELS Firm Number: 10194551

Civil Engineering // Eminent // Geospatial
4701 B. Highway 71 W. Ste. 160
Austin, TX 78735. Tel: (612)-983-2400
www.doucetengineers.com
IPFELS Firm Number: 10194551

WILD RIDGE PHASE 1 DRIPPING SPRINGS, HAYS COUNTY, TEXAS

X:\Departments\Geospatial\Projects\689-005 - Wild Ridge Phase 1\689-005 - Wild Ridge Ph1\689-005 - Wild Ridge Ph1.dwg

