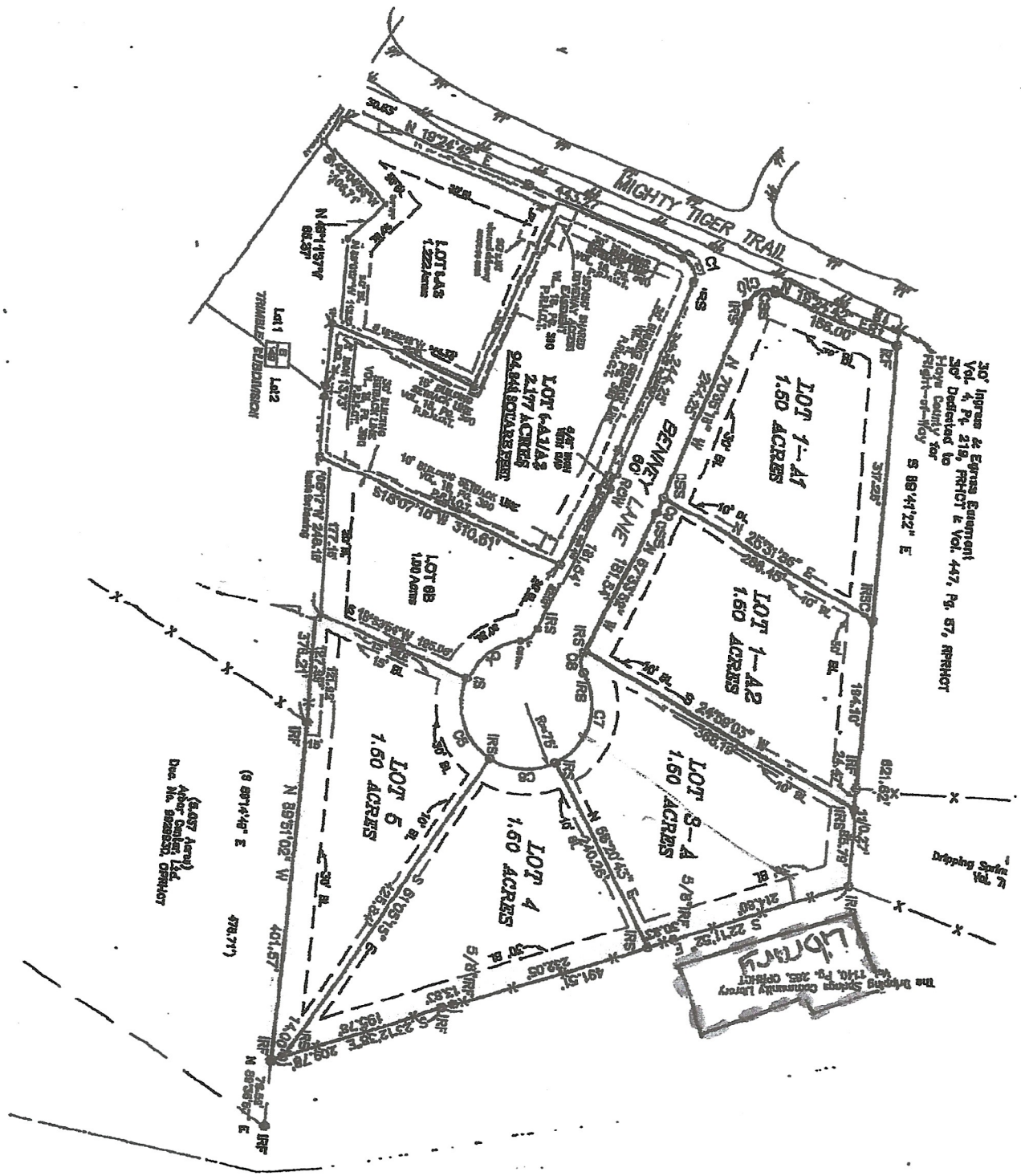


# Exhibit A



30' Ingress & Egress Easement  
 Vol. 4 Pt. 219, PPHOT & Vol. 447, Pg. 57, PPHOT  
 30' Dedicated to  
 Hays County for  
 Right-of-Way S 89°44'22" E

(6457 Acres)  
 Asher Daniel Ltd.  
 Dec. No. 928852, Ordinance

(S 89°14'48" E  
 478.71')

(S 89°14'48" E  
 401.57')

(S 89°14'48" E  
 309.78')

(S 89°14'48" E  
 14.02')

(S 89°14'48" E  
 195.78')

(S 89°14'48" E  
 2312.30')

(S 89°14'48" E  
 491.91')

(S 89°14'48" E  
 24.80')

(S 89°14'48" E  
 24.80')

(S 89°14'48" E  
 24.80')

(S 89°14'48" E  
 24.80')

(S 89°14'48" E  
 24.80')

(S 89°14'48" E  
 24.80')

(S 89°14'48" E  
 24.80')

(S 89°14'48" E  
 24.80')

(S 89°14'48" E  
 24.80')

(S 89°14'48" E  
 24.80')

(S 89°14'48" E  
 24.80')

(S 89°14'48" E  
 24.80')

(S 89°14'48" E  
 24.80')

(S 89°14'48" E  
 24.80')

(S 89°14'48" E  
 24.80')

(S 89°14'48" E  
 24.80')

(S 89°14'48" E  
 24.80')

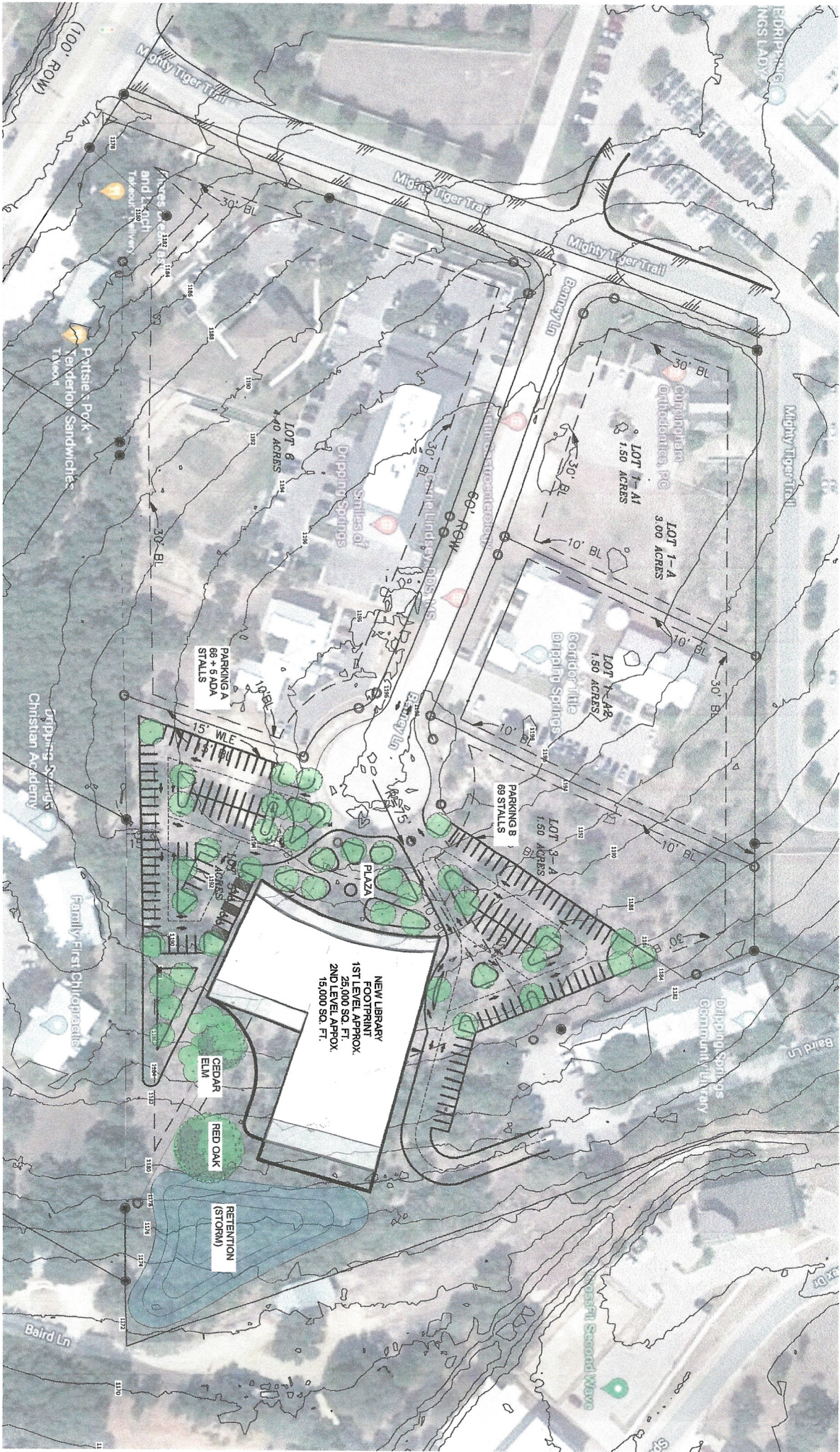
(S 89°14'48" E  
 24.80')

(S 89°14'48" E  
 24.80')

(S 89°14'48" E  
 24.80')

(S 89°14'48" E  
 24.80')

(S 89°14'48" E  
 24.80')



**BENNY LANE PROPERTY -  
PRELIMINARY SITE PLAN**

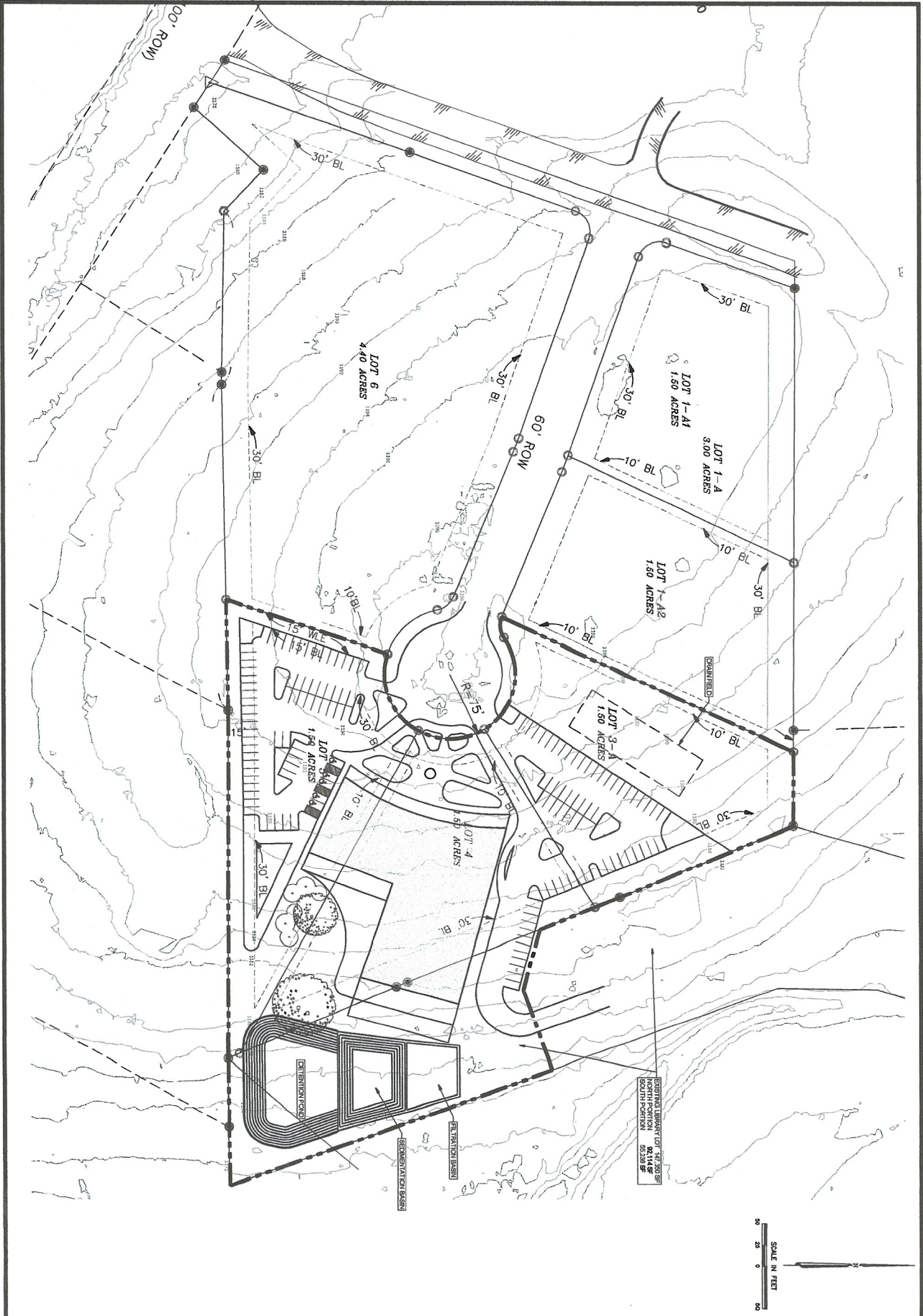
AUGUST 6, 2021



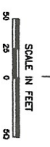
**DIPPING SPRINGS  
COMMUNITY LIBRARY**

SCALE: 1/8" = 1'





EXISTING LIBRARY LOT 1-A, 3.00 ACRES  
 SOUTH PORTION  
 62,748 sq ft



FOR REVIEW PURPOSES ONLY, NOT FOR CONSTRUCTION

**SITE LAYOUT**  
 DRIPPING SPRINGS LIBRARY  
 Dripping Springs, Texas

**Banks & Associates**  
 Civil and Environmental Engineering  
 820 Currie Ranch Road  
 Wimberley, Texas 78676  
 (512) 801-9049  
 Firm Registration No. F-2002

NO.	DATE	REVISIONS	BY

FOR EXAMINEE USE  
 THIS DOCUMENT IS THE PROPERTY OF BANKS & ASSOCIATES. IT IS NOT TO BE REPRODUCED OR TRANSMITTED IN ANY FORM OR BY ANY MEANS, ELECTRONIC OR MECHANICAL, WITHOUT THE WRITTEN PERMISSION OF BANKS & ASSOCIATES.

Sheet No.  
 C-1  
 09/14/21  
 Rev. 0