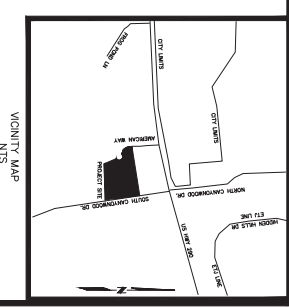
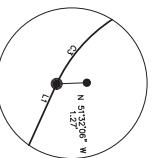


WILLIAM WALKER SURVEY NO. 130  
ABSTRACT NO. 475



LEGEND

- IRON ROD FOUND WITH CAP (AS NOTED)
  - 1/2" IRON ROD FOUND (OR AS NOTED)
  - IRON ROD SET WITH CAP
  - MARKED "CARDINAL SURVEYING"
- P.R.H.C.T. PLAT RECORDS HAYS COUNTY TEXAS  
D.R.H.C.T. DEED RECORDS HAYS COUNTY TEXAS



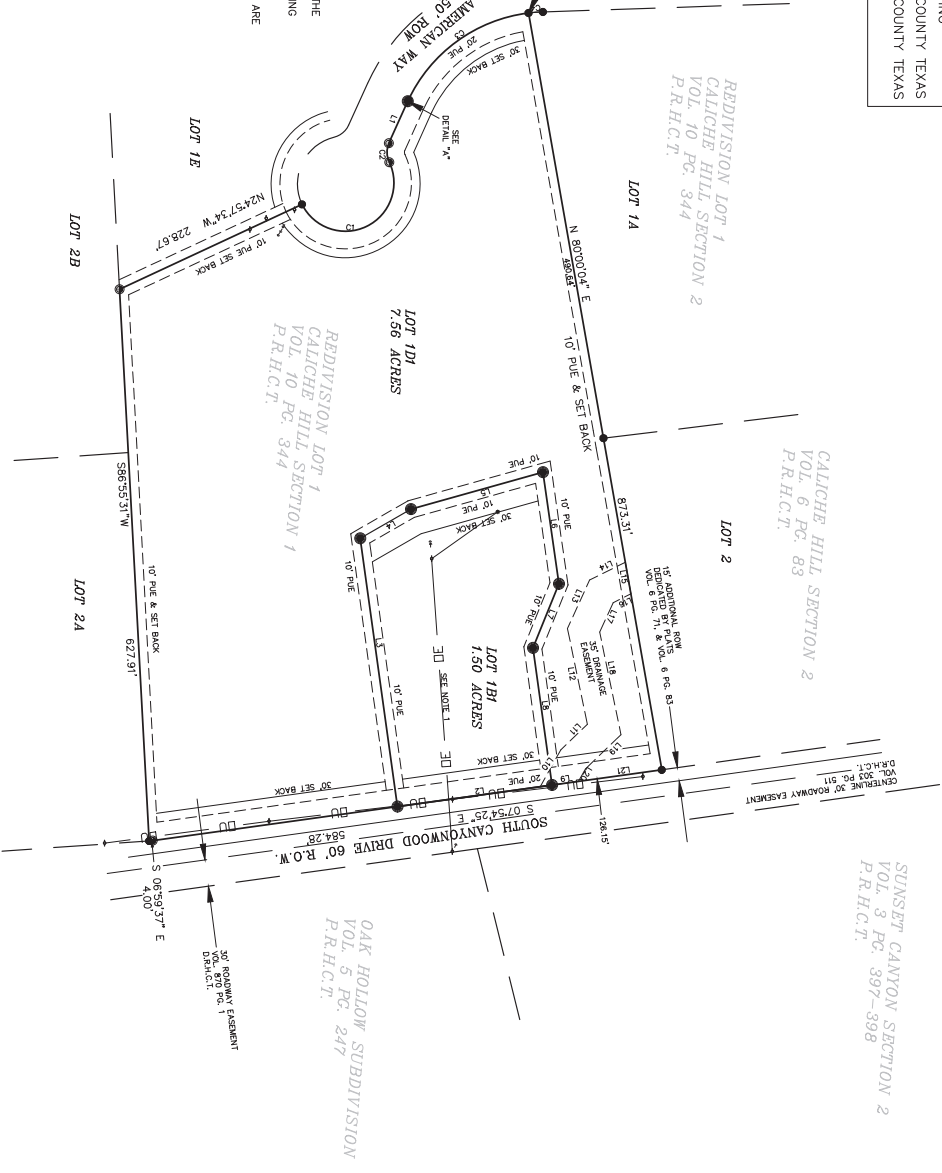
POINT OF BEGINNING  
GRID COORDINATES  
N 13892918.28  
E 2274110.63

SUMMARY OF LOTS  
1 LOT 8 TO 10 ACRES  
1 LOT 1 TO 2 ACRES

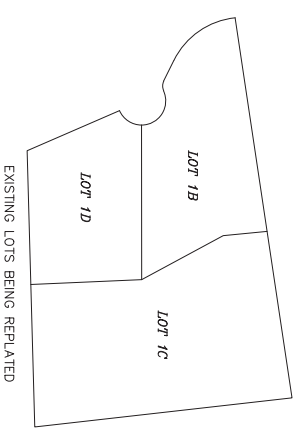
LOT 101 7.56 ACRES 299.314 SQUARE FEET  
LOT 102 1.50 ACRES 65,340 SQUARE FEET  
TOTAL 9.06 ACRES 304,654 SQUARE FEET

- NOTES
1. NO EASEMENT OF RECORD WAS FOUND BY THE SURVEYOR.
  2. STATE PLANE VALUES WERE GENERATED USING THE LEICA SMARTNET NETWORK, NAD83/2018 ADJUSTMENT.
  3. DISTANCES SHOWN ARE SURFACE BEARINGS ARE ON GRADES.
  4. COMBINED SCALE FACTOR 0.999920201

LINE	BEARINGS	DISTANCE
L1	N65°41'36"E	52.30'
L2	S07°54'25"E	172.26'
L3	S07°54'25"E	58.43'
L4	N25°03'35"W	38.45'
L5	N15°39'20"W	156.74'
L6	N81°48'43"E	128.14'
L7	S67°54'25"E	78.67'
L8	N82°05'55"E	157.38'
L9	N27°54'25"E	43.82'
L10	N27°54'25"W	43.82'
L11	N43°48'44"W	41.88'
L12	S78°16'23"W	111.18'
L13	N65°28'22"W	60.64'
L14	N28°28'37"W	45.30'
L15	S23°03'47"E	35.49'
L16	S23°03'47"E	35.49'
L17	S65°28'22"E	36.27'
L18	N78°16'23"E	119.09'
L19	S43°48'44"E	55.98'
L20	S60°54'25"E	18.36'
L21	S07°54'25"E	95.79'



REPLAT LOT 2 CALICHE HILL SECTION 1  
VOLUME 18, PAGE 140  
P.R.H.C.T.



CURVE	RADIUS	ARC LENGTH	DELTA ANGLE	CHORD BEARING	CHORD LENGTH
C1	55.04'	171.78'	178°49'22"	N25°44'43"W	110.07'
C2	25.00'	22.35'	51°13'20"	S85°38'52"W	21.61'
C3	175.00'	177.54'	58°07'35"	N56°09'56"W	170.02'
C4	175.00'	16.39'	5°22'03"	N04°24'21"W	16.39'

CURVE TABLE

DATE	BY	REVISIONS

**Cardinal**  
Surveying & Mapping  
David P. Carr, RPLS  
TBPEL'S FIRM NO. 10194078

FINAL PLAT  
BEING A REPLAT OF LOTS 1B THRU 1D  
OF THE  
REDIVISION OF LOT 1 CALICHE HILL SECTION 1  
WITHIN THE EXTRATERRITORIAL JURISDICTION  
OF THE CITY OF DRIPPING SPRINGS, TEXAS