

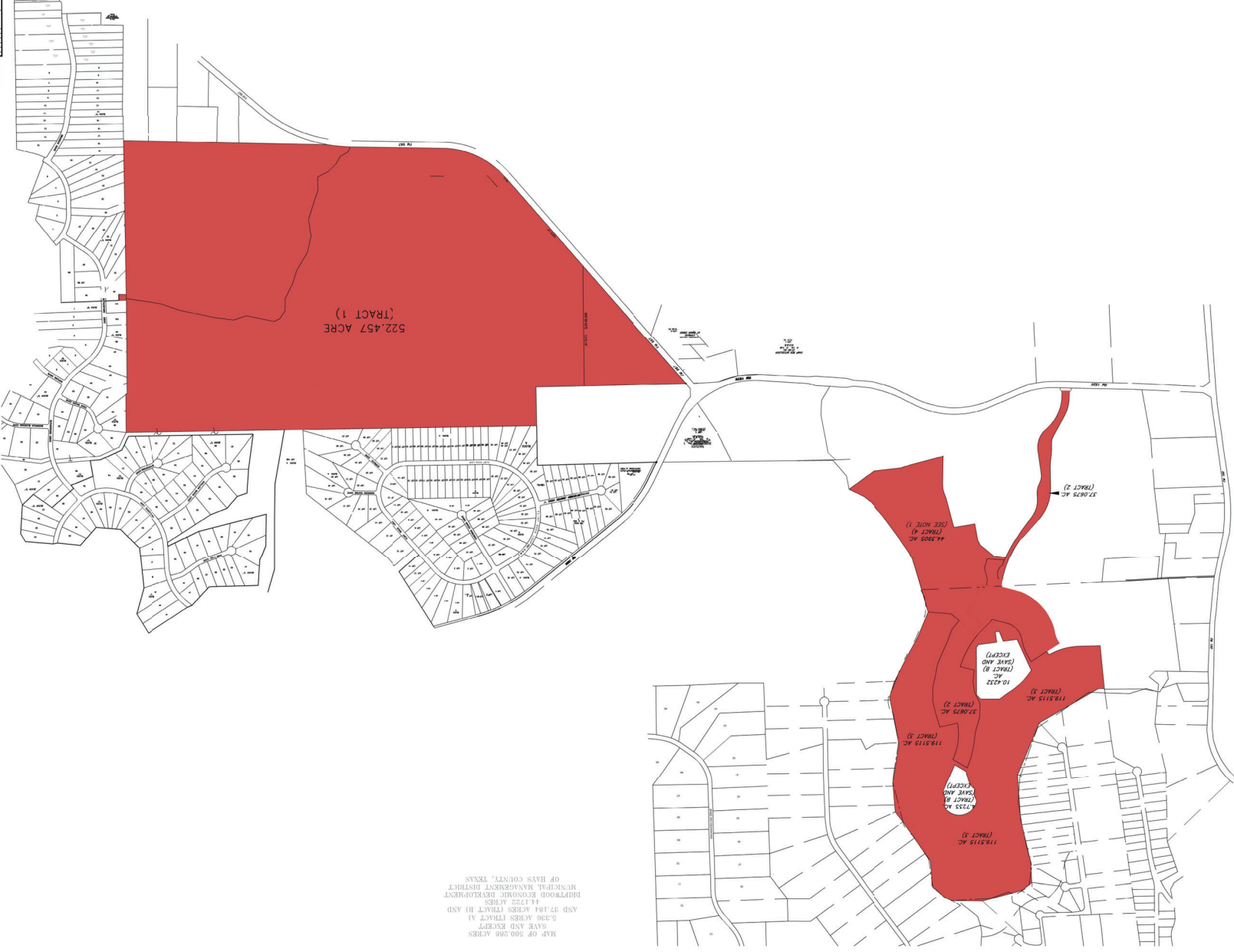
DRIFTWOOD GOLF AND RANCH CLUB
CONSERVATION DISTRICT BOUNDARY

DATE: 2/11/2021
JOB NO: 18-004-13
SCALE: AS SHOWN
CHECKED BY: JMS
DRAWN BY: RLW

Metric Engineering Company
Texas Registered Engineering Firm #353
1101 Capital of Texas Highway, Suite 110, Austin, Texas 78746 (512) 327-8804

MEC

FOR PLANNING PURPOSES ONLY



DCD

MAP OF 500.000 ACRES
SAVE AND EXCEPT
3.336 ACRES (TRACT A)
AND 37.184 ACRES (TRACT B) AND
11.722 ACRES
DRIFTWOOD ECONOMIC DEVELOPMENT
MENTAL MANAGEMENT DISTRICT
OF HAYS COUNTY, TEXAS

