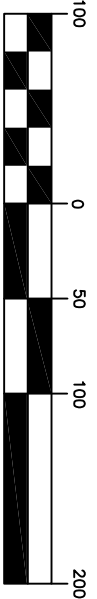
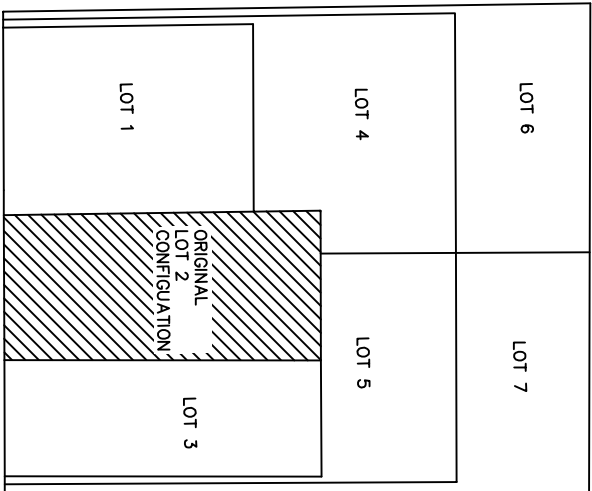


The map shows a shaded black rectangular area representing the proposed project. To the left of this area is a vertical line labeled 'US HWY 290'. Below the shaded area, a horizontal line is labeled 'CITY LIMITS'. To the right of the shaded area, a vertical line is labeled 'CITY LIMITS'. Further to the right, a horizontal line is labeled 'ETJ'. A north arrow is located in the bottom right corner, pointing towards the top of the page. A scale bar at the bottom indicates a distance of 1 mile.



(IN FEET)
1 inch = 100 ft

- ## LEGEND



BASIS OF BEARINGS:
 TEXAS STATE PLANE NAD83/2018 ADJUSTMENT
 TEXAS SOUTH CENTRAL ZONE 4204.
 DISTANCES SHOWN ARE SURFACE
 COORDINATES SHOWN ARE GRID
 COMBINED SCALE FACTOR 0.999918511

[illegible]

