



VICINITY MAP

OWNER/TEAM INFORMATION

CIVIL ENGINEER
 CIVIL & ENVIRONMENTAL CONSULTANTS, INC.
 317 CHASE LANE #240
 AUSTIN, TX 78748
 CONTACT: BRIAN ESTES, PE

LAND SURVEYOR
 CIVIL & ENVIRONMENTAL CONSULTANTS, INC.
 317 CHASE LANE #240
 AUSTIN, TX 78748
 CONTACT: STACY SMITH, ANS, R.F.S.

SUMMARY

FULL PURPOSE CITY LIMITS
 ZONING: SF-2

AREAS

LOTS (P) 80.0%
 ROW (L) 10.0%
 ROW 11.82%
 TOTAL = 78.82 AC.

IMPERVIOUS COVER

CONCRETE = 170,798 SF
 SIDEWALK = 49,993 SF
 ASSUMED IC PER RESIDENTIAL LOT = 5,500 SF
 IMPERVIOUS COVER TOTAL = 226,291 SF
 TOTAL AREA = 288,444 SF
 TOTAL AREA = 78.82 AC.
 PROPOSED IMPERVIOUS COVER = 26.47%
 MAX. ALLOWED IMPERVIOUS COVER = 40%

LOT COUNT

NUMBER OF LOTS = 78
 FRONT = 26'
 BACK = 19'
 TOTAL = 60.10 AC

PLAT NOTES

- ALL RESPONSIBILITY FOR THE ACCURACY OF THESE PLANS REMAINS WITH THE ENGINEER WHO PREPARED THESE PLANS. THE CITY MUST REVIEW THE ACCURACY OF THE WORK OF THE DESIGN ENGINEER.
- ASSIGNED CITY ADDRESS NUMBERS SHALL BE PERMANENTLY AFFIXED TO ALL STRUCTURES IN SUCH POSITION AS TO BE PLAINLY VISIBLE AND LEGIBLE FROM THE STREET.
- NO PORTION OF THIS TRACT FALLS WITHIN FEMA 1% ANNUAL CHANCE FLOOD HAZARD AREA PER FEMA PANEL 48060008P DATED 9/2/2009.
- WATER PROVIDER: DRIPPING SPRINGS WATER SUPPLY CORP.
- A PORTION OF THE PROJECT IS LOCATED WITHIN THE EDWARDS AQUIFER CONTRIBUTING ZONE.
- THE JURISDICTIONAL AUTHORITY FOR WASTE STORAGE FACILITIES (WSS) FALLS UNDER THE TEXAS COMMISSION ON ENVIRONMENTAL QUALITY. THE AUTHORIZED AGENT IS THE CITY OF DRIPPING SPRINGS.
- THE HOA SHALL BE RESPONSIBLE FOR OPERATION AND MAINTENANCE OF STORMWATER FACILITIES.
- DRIPPING SPRINGS WATER SUPPLY CORPORATION WILL OWN AND OPERATE THE WATER FACILITIES AS PER NOTE 4.
- THE HOA SHALL BE THE OWNER AND OPERATOR OF ROADWAY FACILITIES.

APPROVED BY: _____

CITY ADMINISTRATOR

CITY SECRETARY

CITY ENGINEER

DRIPPING SPRINGS WATER SUPPLY CORPORATION

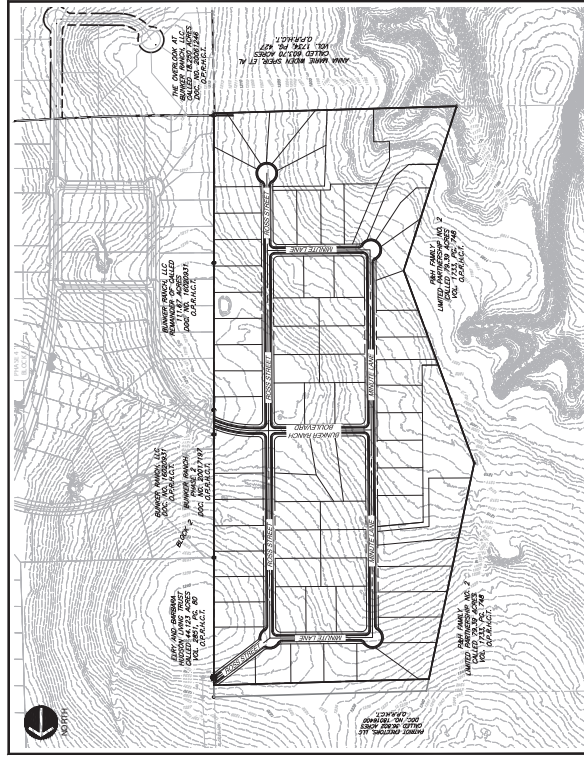
PLANNING DIRECTOR

HAYS COUNTY ESD #6

PLANNING & ZONING COMMISSION CHAIR

SITE PERMIT NUMBER

PRELIMINARY PLAT FOR HARDY T LAND CITY OF DRIPPING SPRINGS, HAYS COUNTY, TX



SITE MAP
 SCALE: 1"=300'

SHEET #	DESCRIPTION
01	COVER SHEET
02	PRELIMINARY PLAT SHEET 1 OF 2
03	PRELIMINARY PLAT SHEET 2 OF 2
04	EXISTING DRAINAGE AREA MAP
05	PROPOSED DRAINAGE AREA MAP
06	DETENTION POND PLAN A
07	DETENTION POND PLAN B
08	DETENTION POND PLAN C
09	WATER & EGS PLAN

LEGAL DESCRIPTION

BEING A 78.82 AC TRACT OUT OF THE BURNHAM F. HIRSH SURVEY, NO. 28, ABSTRACT NO. 222, SHERMAN COUNTY, TEXAS, BEING MORE PARTICULARLY DESCRIBED UNTIL SPECIAL WARRANTY DEED OF RECORD IN DOCUMENT NO. 2185171, OFFICIAL PUBLIC RECORDS OF HAYS COUNTY, TEXAS (OP.HHCT).

NOTES

- OWNER WILL BE ABLE TO CONTINUE DEVELOPMENT PROCESS, SUCH AS ROADS, UTILITIES, AND EASEMENTS, SUBJECT TO THE CITY'S REVIEW AND APPROVAL. THE CITY'S REVIEW SHALL BE LIMITED UNTIL THE DEVELOPMENT PROCESS IS ESTABLISHED IN CONFORMANCE WITH THE 2018 INTERNATIONAL FIRE CODE, APPENDIX D, SECTION D107.7 AND SECTION D107.2.
- CONNECTION TO THE EXISTING BUNKER RANCH BOULEVARD STUB AT BUNKER RANCH PHASE 4 MUST BE COMPLETED PRIOR TO APPROVAL OF THE FINAL PLAT FOR HARDY.
- STREET TREES SHALL BE PLANTED IN EACH LOT PRIOR TO THE ISSUANCE OF A CERTIFICATE OF OCCUPANCY. THE QUANTITY, SIZE AND LOCATION REQUIREMENTS OF SUBDIVISION ORDINANCE 28.06.039.
- DEVELOPER WILL BUILD SIDEWALKS ADJACENT TO COMMON AREAS. HOME BUILDERS WILL BUILD SIDEWALKS ON RESIDENTIAL LOTS. DEVELOPER WILL BOND SIDEWALKS PRIOR TO CONSTRUCTION.



SUBMITTED BY: BRIAN ESTES, PE

06/27/2022

EVERY STATE ENGINEER ASSUMES RESPONSIBILITY FOR THE ACCURACY OF THE PLANS AND THE INTENDED PURPOSES, INCLUDING CONSTRUCTION, BUT ARE NOT AUTHORIZED FOR CONTROL OR FOR FORMAL CITY APPROVAL.

APPROVED BY: _____

CITY ADMINISTRATOR

CITY SECRETARY

DRIPPING SPRINGS WATER SUPPLY CORPORATION

PLANNING DIRECTOR

HAYS COUNTY ESD #6

PLANNING & ZONING COMMISSION CHAIR

SITE PERMIT NUMBER



811
 BE CAUTION!!
 BE CAUTION!!
 IT IS THE CONTRACTOR'S RESPONSIBILITY TO BEPT ALL EXISTING UTILITIES PRIOR TO CONSTRUCTION. CONTACT THE ENGINEER IMMEDIATELY IF ANY INTERFERENCES.

