

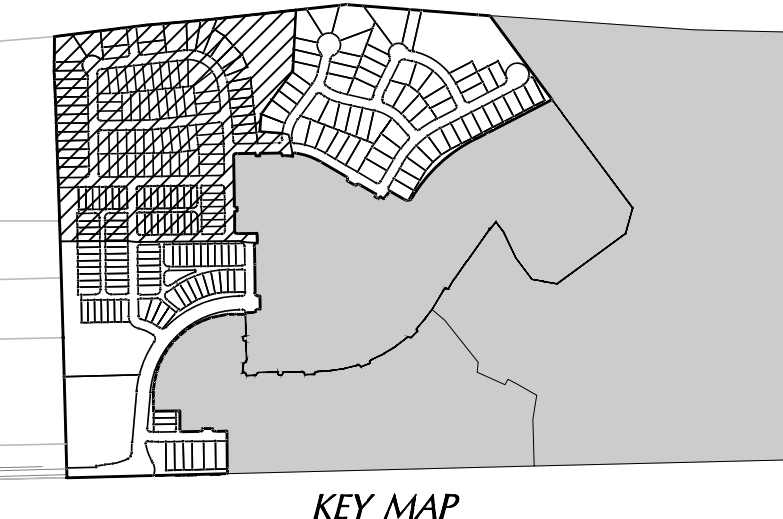
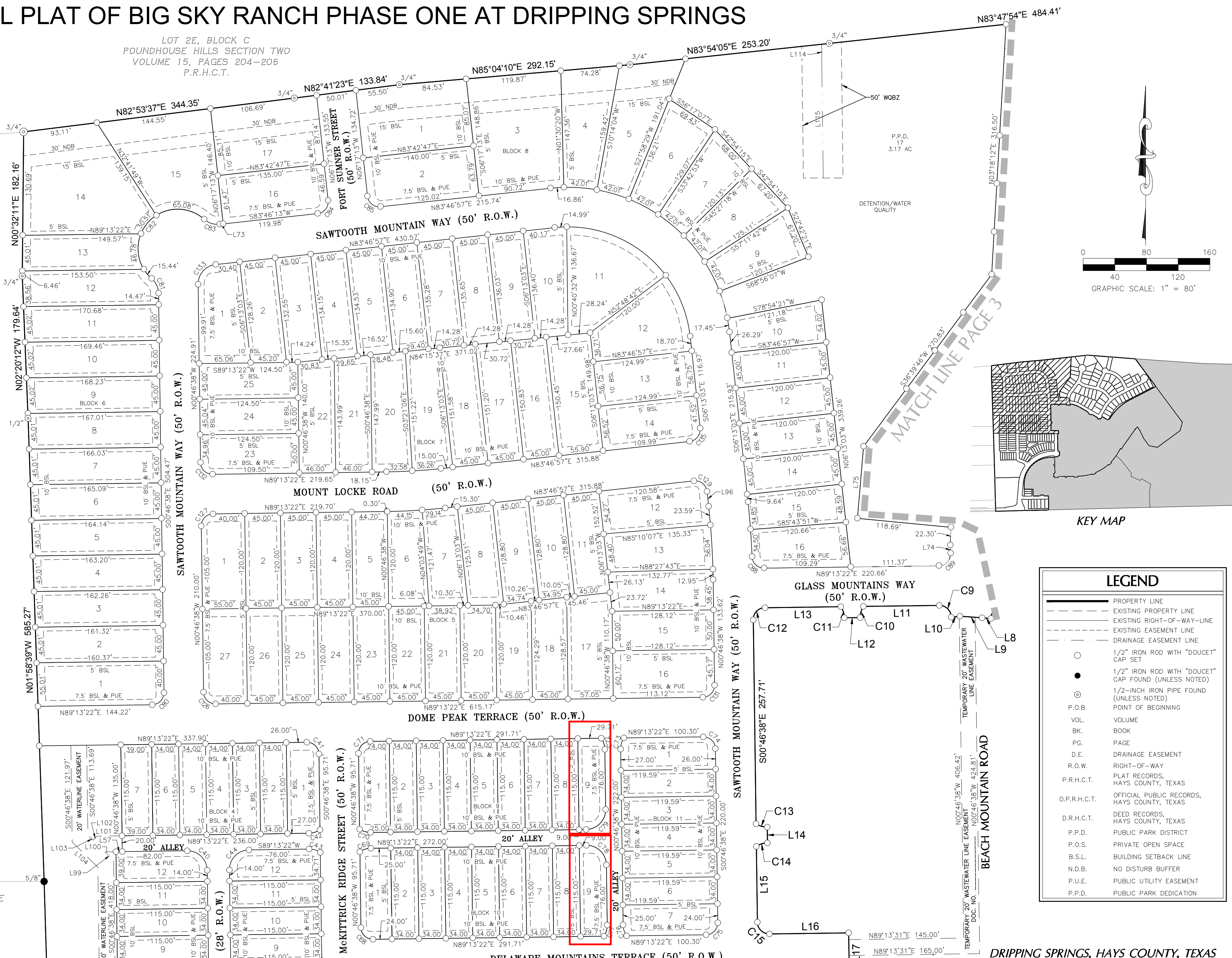
AMENDED FINAL PLAT OF BIG SKY RANCH PHASE ONE AT DRIPPING SPRINGS

PHILLIP A. SMITH LEAGUE,
SURVEY #26,
ABSTRACT NUMBER 415

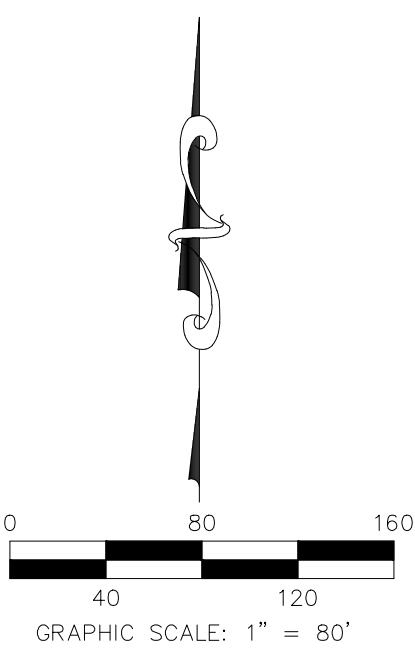
LOT 2E, BLOCK C
POUNDFIELD HILLS SECTION TWO
VOLUME 15, PAGES 204-206
P.R.H.C.T.

H.C. CARTER
(17.185 ACRES)
VOLUME 3030, PAGE 809
O.P.R.H.C.T.

FRIENDS OF THE POUNDFIELD
FOUNDATION
(1.978 ACRES)
VOLUME 1714, PAGE 295
O.P.R.H.C.T.



LEGEND	
	PROPERTY LINE
	EXISTING PROPERTY LINE
	EXISTING RIGHT-OF-WAY LINE
	EXISTING EASEMENT LINE
	DRAINAGE EASEMENT LINE
	1/2" IRON ROD WITH "DOUCET" CAP SET
	1/2" IRON ROD WITH "DOUCET" CAP FOUND (UNLESS NOTED)
	1/2-INCH IRON PIPE FOUND (UNLESS NOTED)
	P.O.B. POINT OF BEGINNING
	VOL. VOLUME OF BEGINNING
	BK. BOOK
	PG. PAGE
	D.E. DRAINAGE EASEMENT
	R.O.W. RIGHT-OF-WAY
	P.R.H.C.T. PLAT RECORDS, HAYS COUNTY, TEXAS
	O.P.R.H.C.T. OFFICIAL PUBLIC RECORDS, HAYS COUNTY, TEXAS
	D.R.H.C.T. DEED RECORDS, HAYS COUNTY, TEXAS
	P.P.D. PUBLIC PARK DISTRICT
	P.O.S. PRIVATE OPEN SPACE
	B.S.L. BUILDING SETBACK LINE
	N.D.B. NO DISTURB BUFFER
	P.U.E. PUBLIC UTILITY EASEMENT
	P.P.D. PUBLIC PARK DEDICATION



MATCH LINE PAGE 4

DA DOUCET & ASSOCIATES
Civil Engineering - Planning - Geospatial
7401 B. Highway 71 W, Suite 160
Austin, Texas 78735, Phone: (512)-583-2600
www.doucetengineers.com
TBPLS Firm #10105800 / TBPE Firm #3937

Date: 08/12/2020
Scale: 1"=80'
Drawn by: JWF
Reviewer: GC
Project: 1691-002
Sheet: 3 OF 7
Field Book: -
Party Chief: JSM
Survey Date: 01-30-2018

X:\Departments\Geospatial\Projects\1691-002_Big_Sky (Scott - Tracy)\CAD\Drawings\1691-002_Plat1-Plat1-AMENDED.dwg