

**A Restaurant Remodel for**

---

# **CP 290 LLC & Pig Pen BBQ**

---

**301 U.S. Highway 290 West  
Dripping Springs, Texas 78620**

*Herron Design Studio*

a r c h i t e c t u r e

101 Hays Street, Suite 409  
Dripping Springs, Texas 78620  
512.858.9889





**Site Photos**

**An Restaurant Remodel for  
CP 290 LLC & Pig Pen BBQ  
Phase 1 - Screened Cooking Porch  
301 U.S. Highway 290 West  
Dripping Springs, Texas 78620**

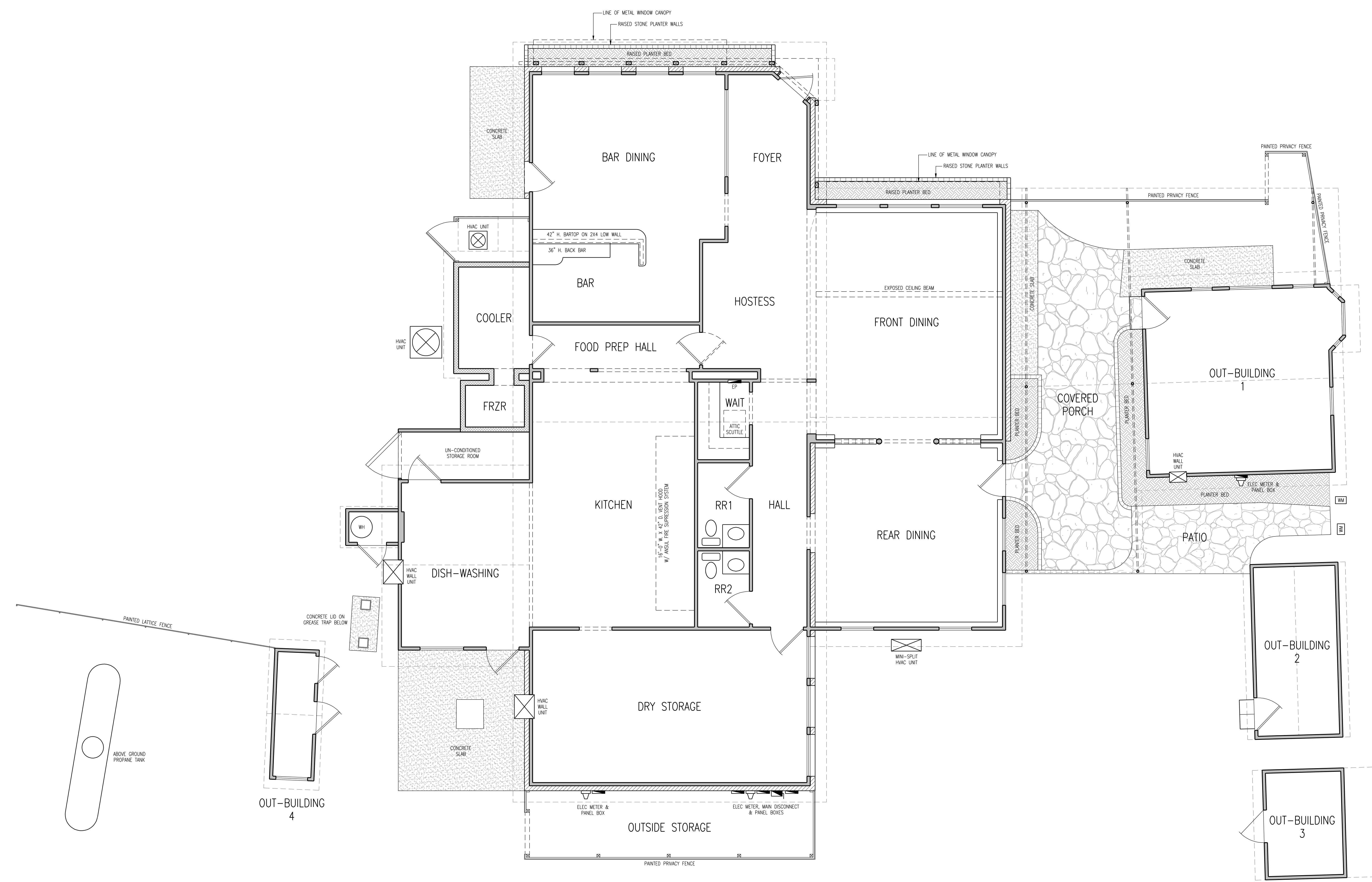


**Site Photos**



**An Restaurant Remodel for  
CP 290 LLC & Pig Pen BBQ  
Phase 1 - Screened Cooking Porch  
301 U.S. Highway 290 West  
Dripping Springs, Texas 78620**

SQUARE FOOTAGES	
MAIN BLDG. HEATED AREA	2738 SQ. FT.
MAIN BLDG. WH CLOS. & STORAGE AREAS	71 SQ. FT.
MAIN BLDG. FRONT COVERED PORCH	12 SQ. FT.
COVERED PORCH AREA	549 SQ. FT.
OUTBLDG. 1 HEATED AREA	306 SQ. FT.
OUTBLDG. 2 COVERED AREA	130 SQ. FT.
OUTBLDG. 3 COVERED AREA	76 SQ. FT.
OUTBLDG. 4 COVERED AREA	49 SQ. FT.
TOTAL PROJECT COVERED AREA	3922 SQ. FT.



EXISTING FLOOR PLANS  
SCALE: 1/4" = 1'-0"

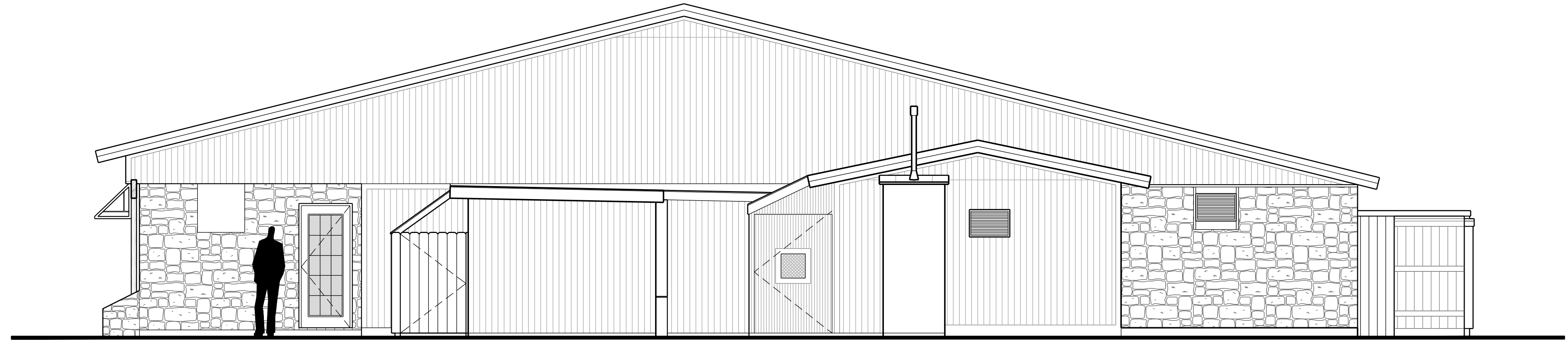
A Restaurant Remodel for CP 290 LLC & Pig Pen BBQ  
301 U.S. Highway 290 West  
Dripping Springs, Texas 78620



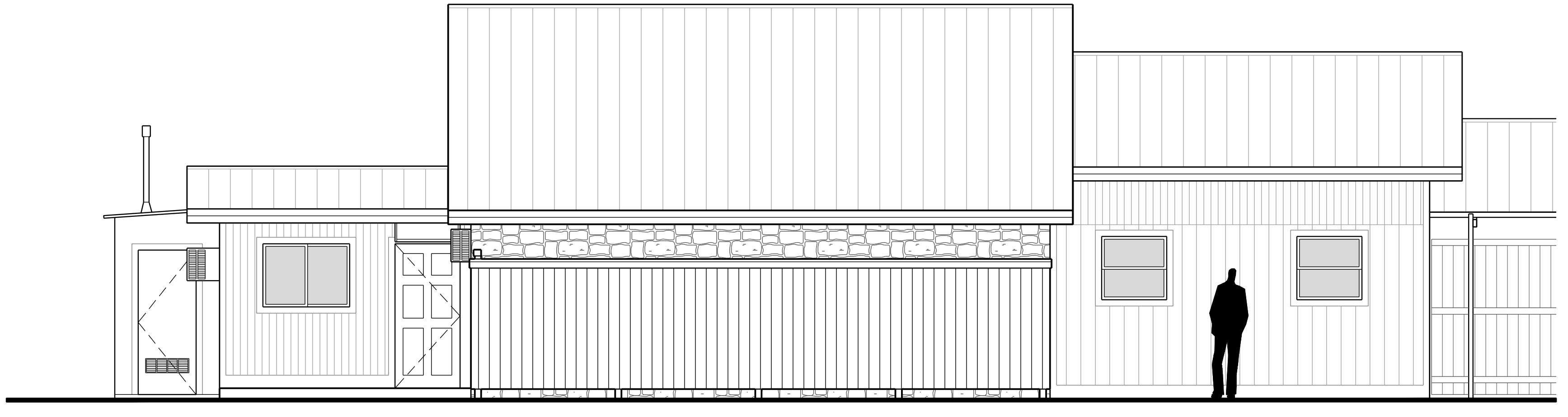
**Hennon Design Studio**  
architects  
101 Hays Street, Suite 409  
Dripping Springs, Texas 78620  
512.858.9889

REVISIONS

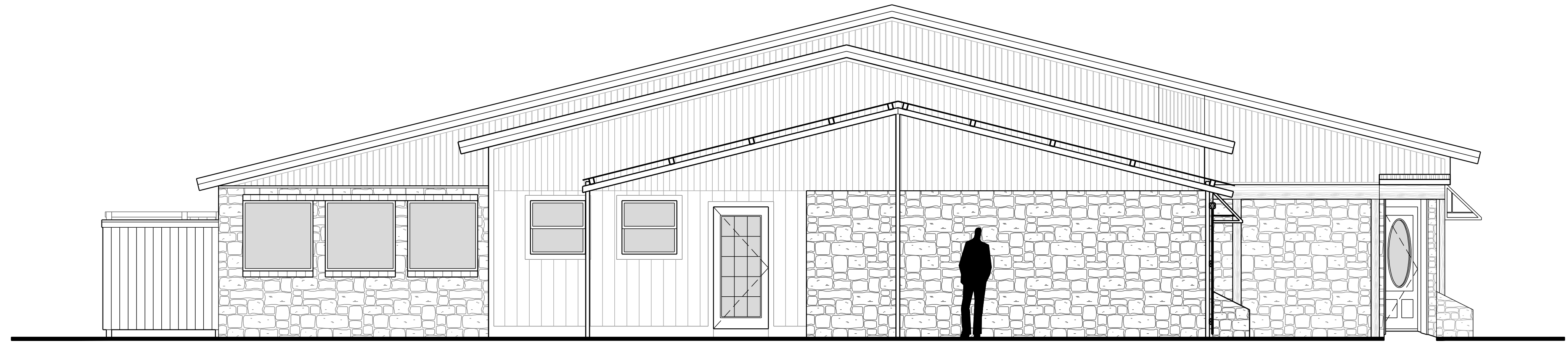
CRE2016  
AUG. 31, 2020  
**A1**



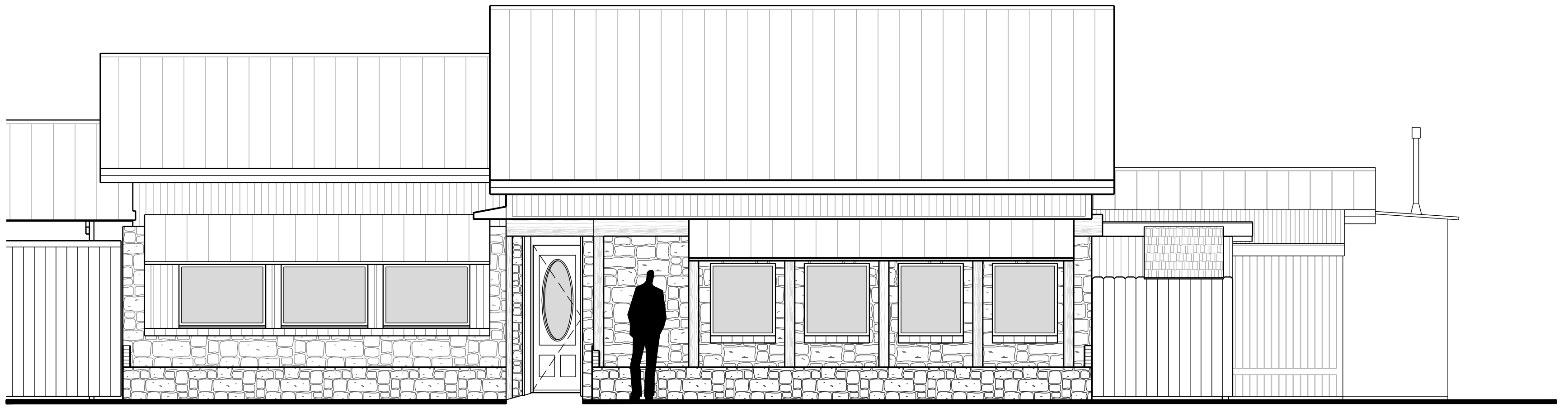
EXISTING RIGHT ELEVATION  
FACES WEST  
 SCALE : 1/4" = 1'-0"



EXISTING REAR ELEVATION  
FACES SOUTH  
 SCALE : 1/4" = 1'-0"



EXISTING LEFT ELEVATION  
FACES EAST  
 SCALE : 1/4" = 1'-0"



EXISTING FRONT ELEVATION  
FACES NORTH  
 SCALE : 1/4" = 1'-0"

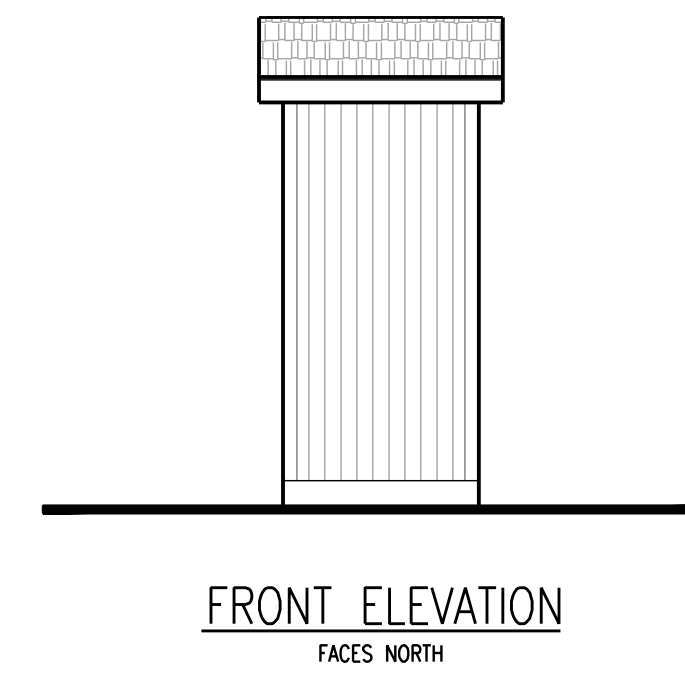
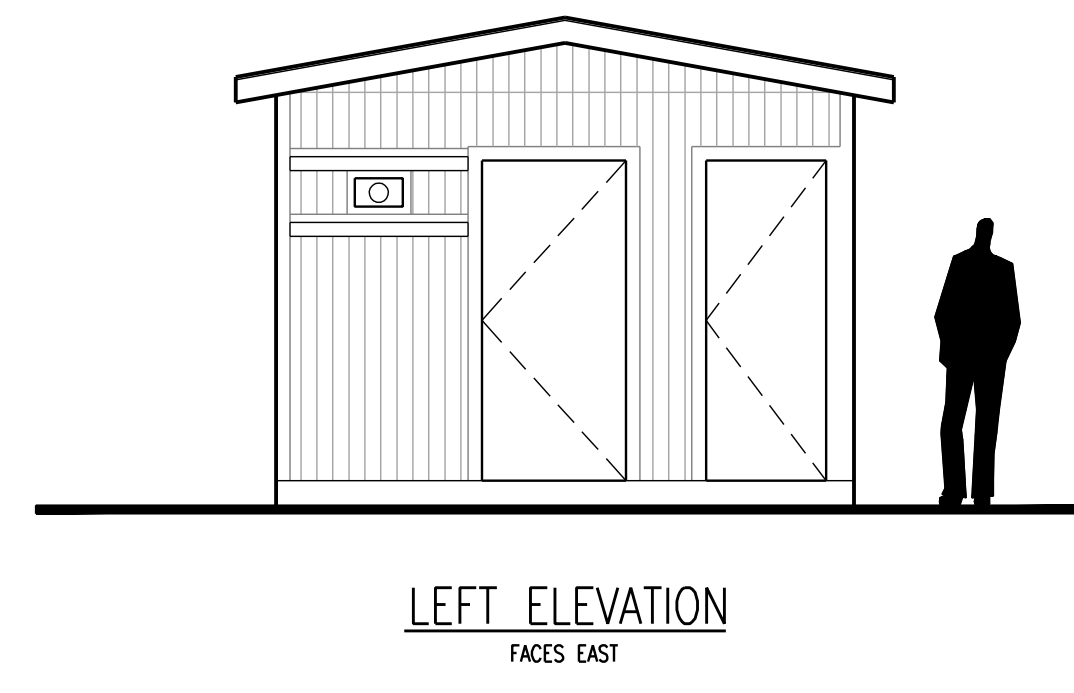
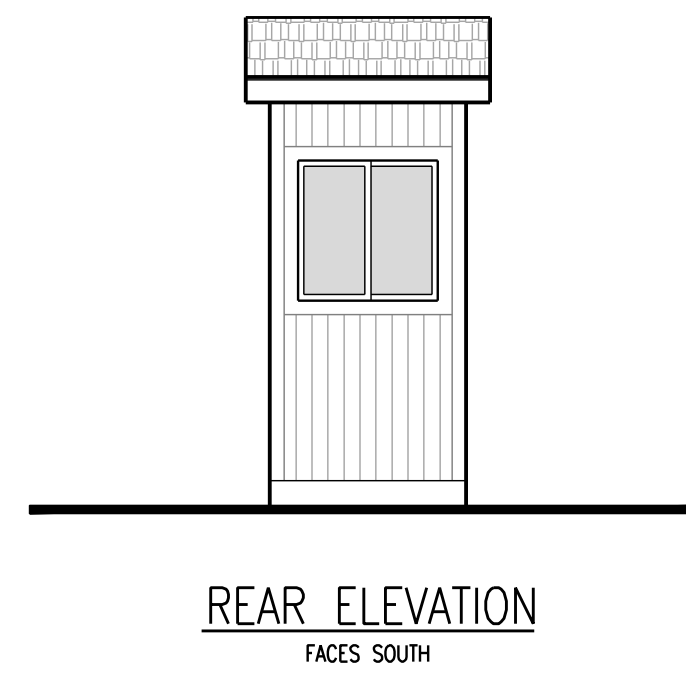
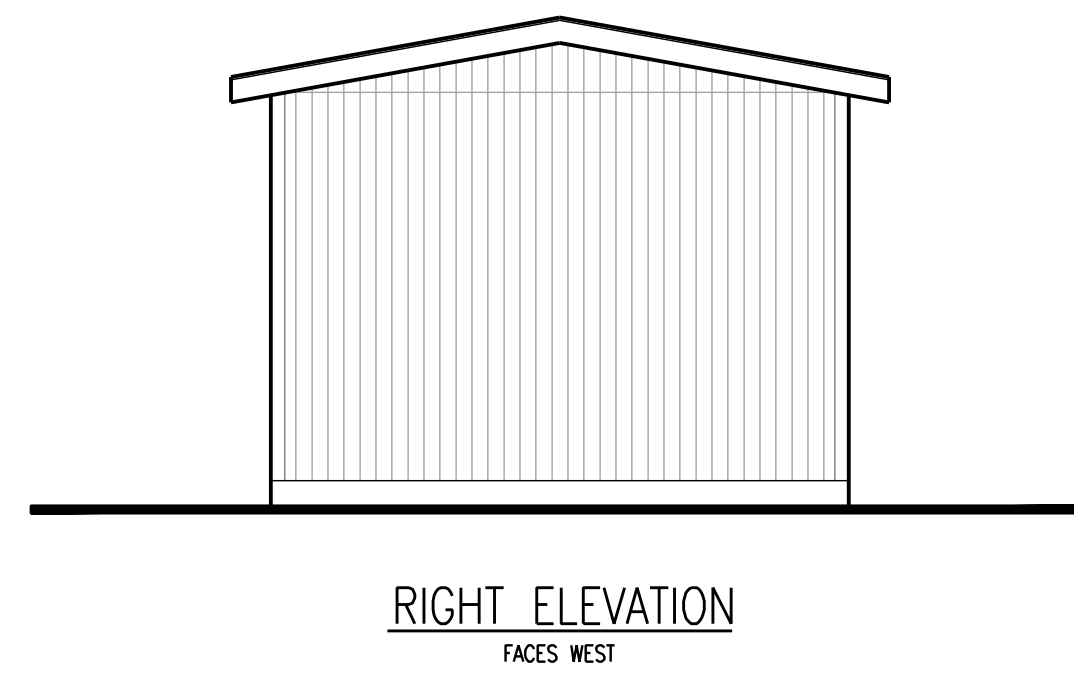
A Restaurant Remodel for CP 290 LLC & Pig Pen BBQ  
 301 U.S. Highway 290 West  
 Dripping Springs, Texas 78620



*Hennon Design Studio*  
 a r c h i t e c t u r e  
 101 Hays Street, Suite 409  
 Dripping Springs, Texas 78620  
 512.858.9889

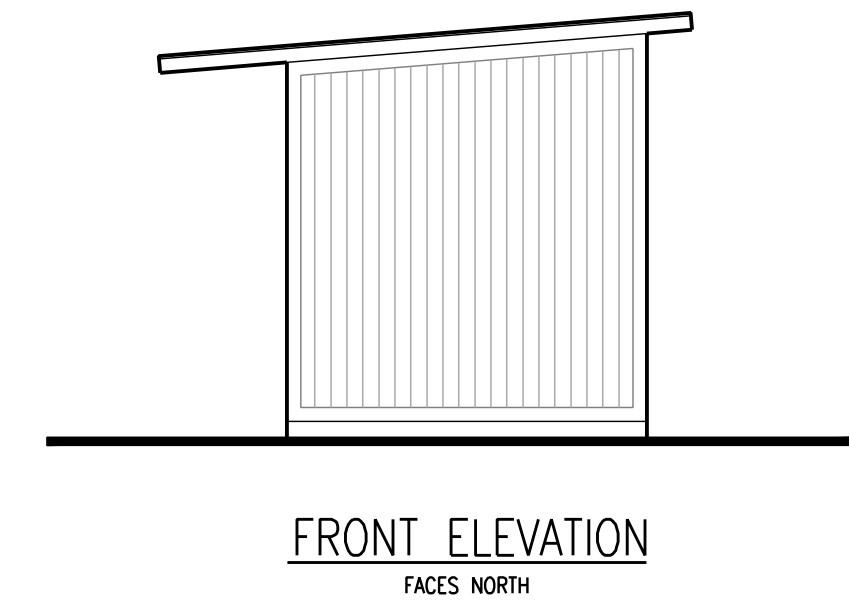
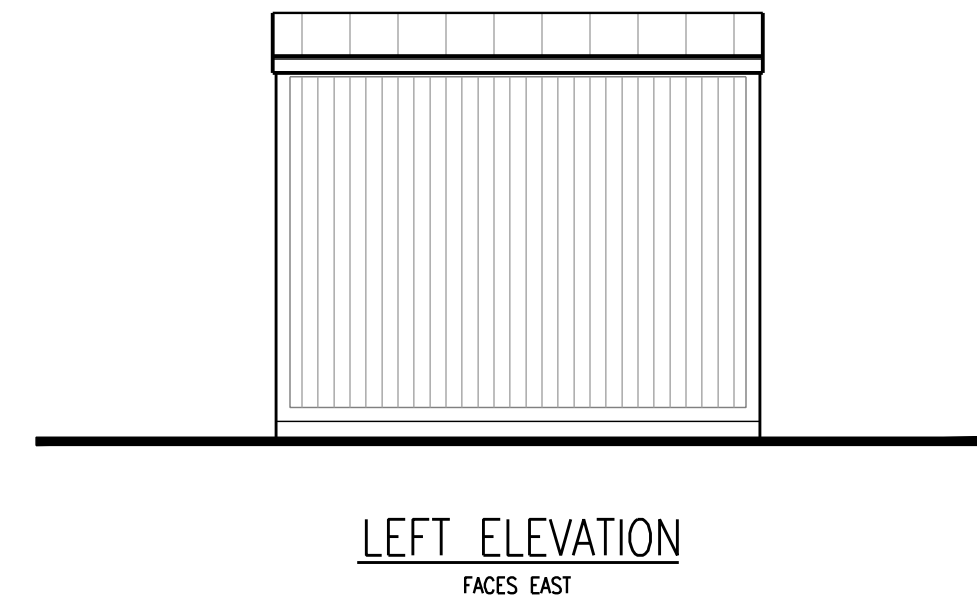
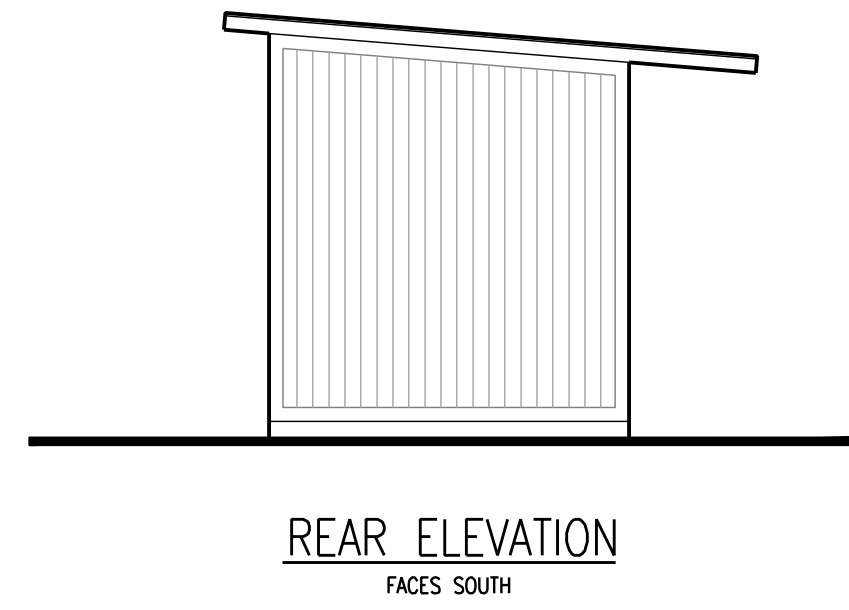
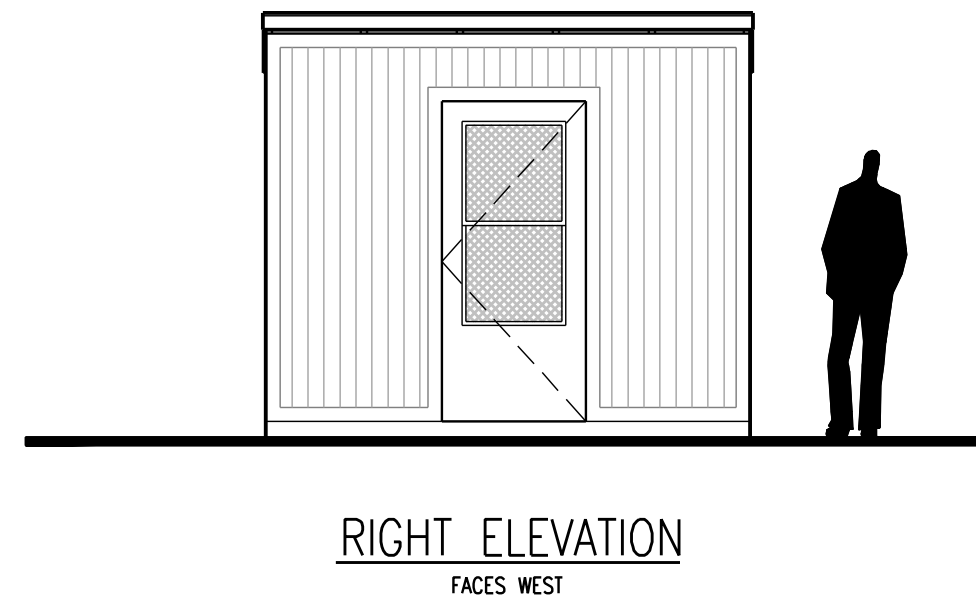
REVISIONS

CRE2016  
 AUG. 31, 2020  
**A2**



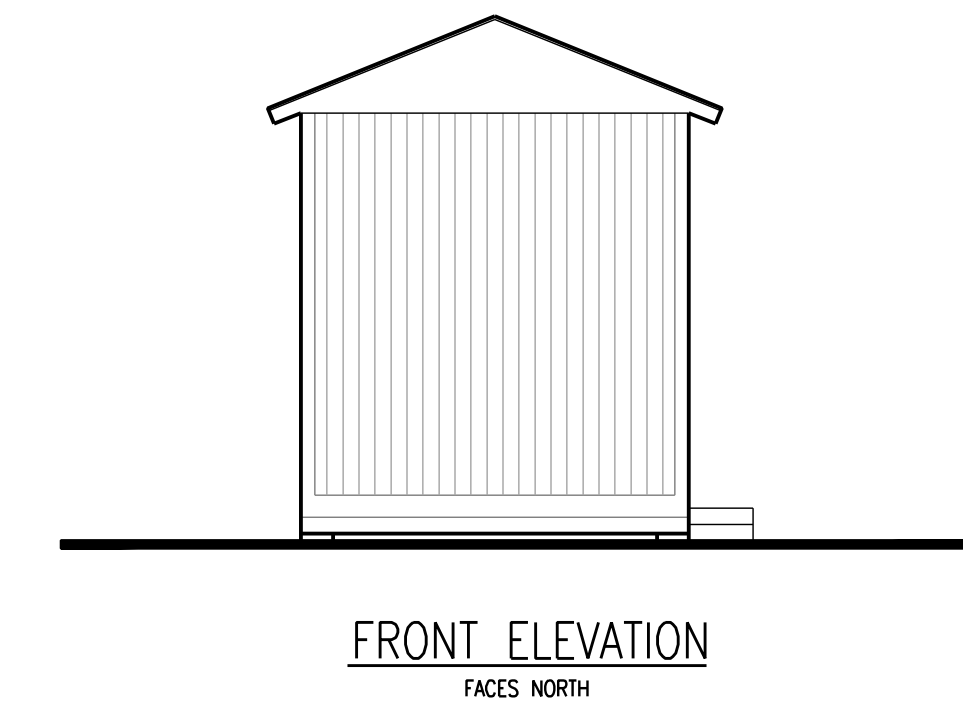
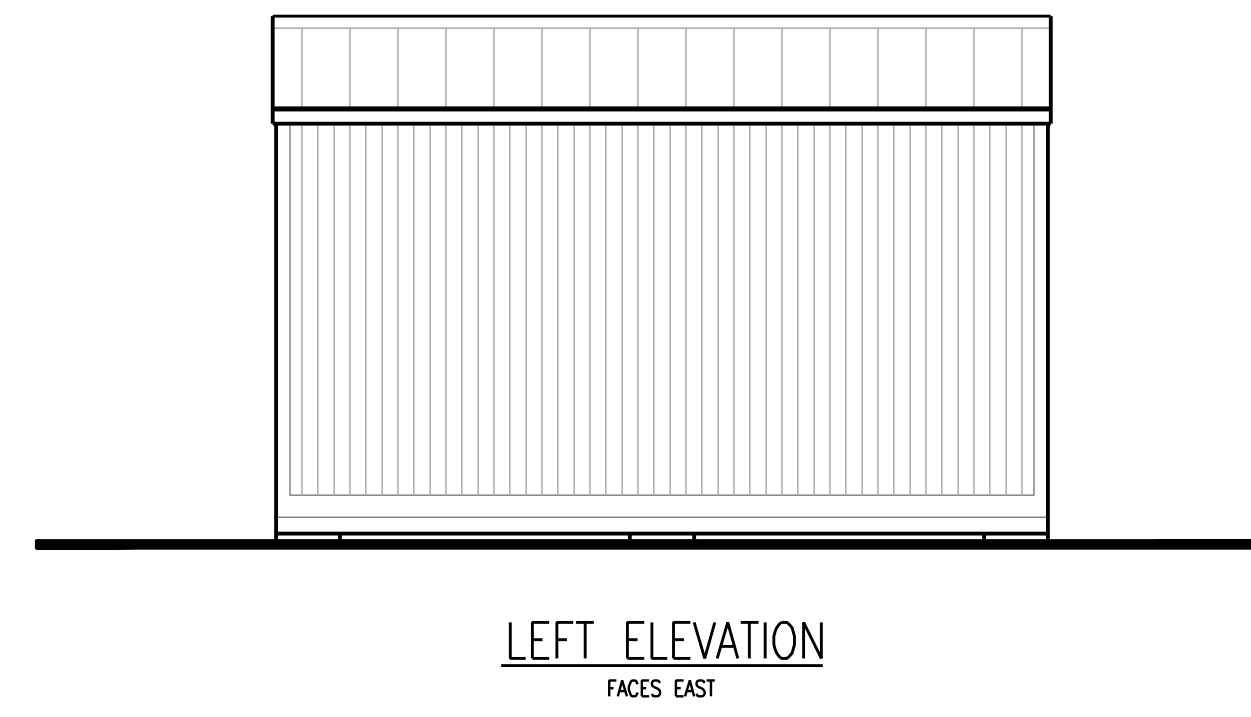
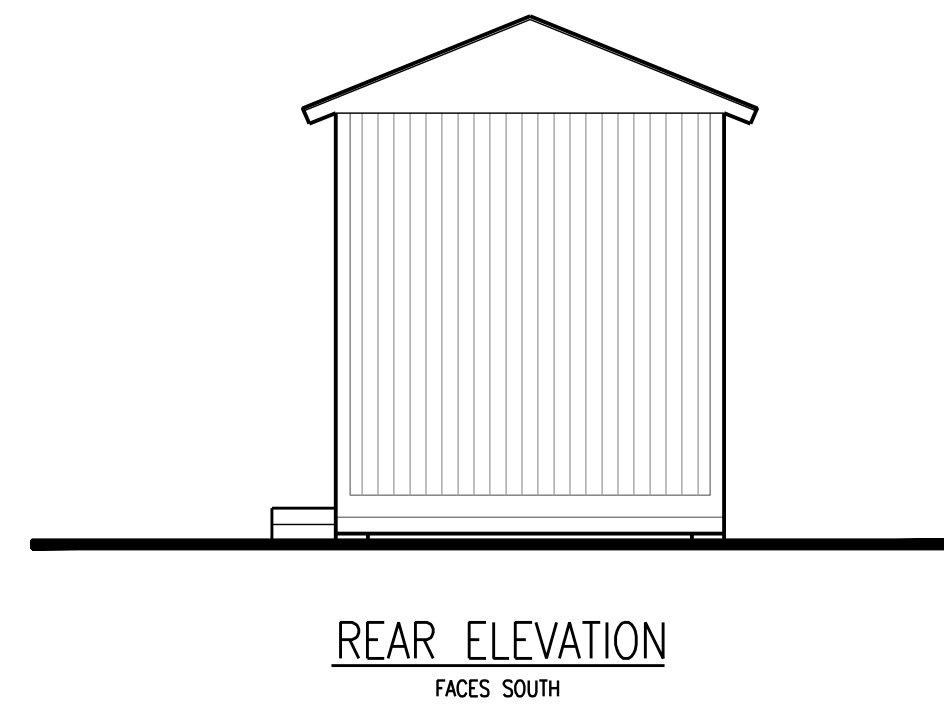
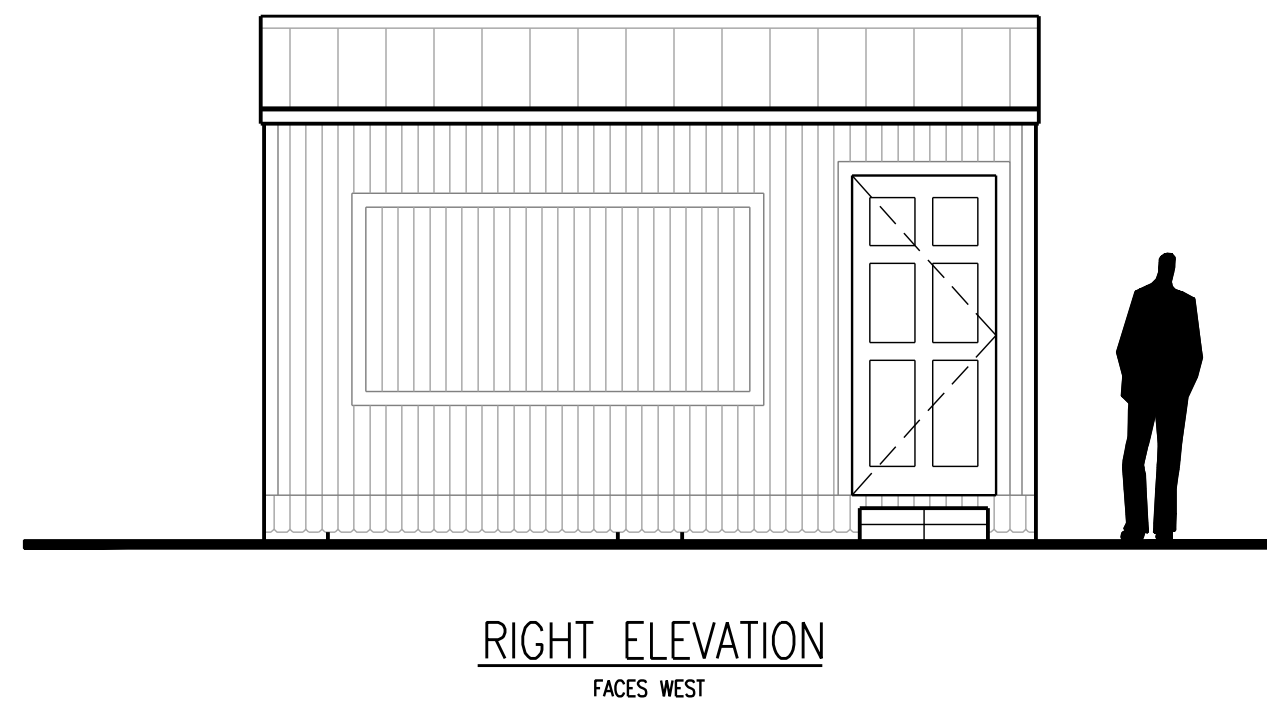
EXISTING OUT-BUILDING 4

SCALE : 1/4" = 1'-0"



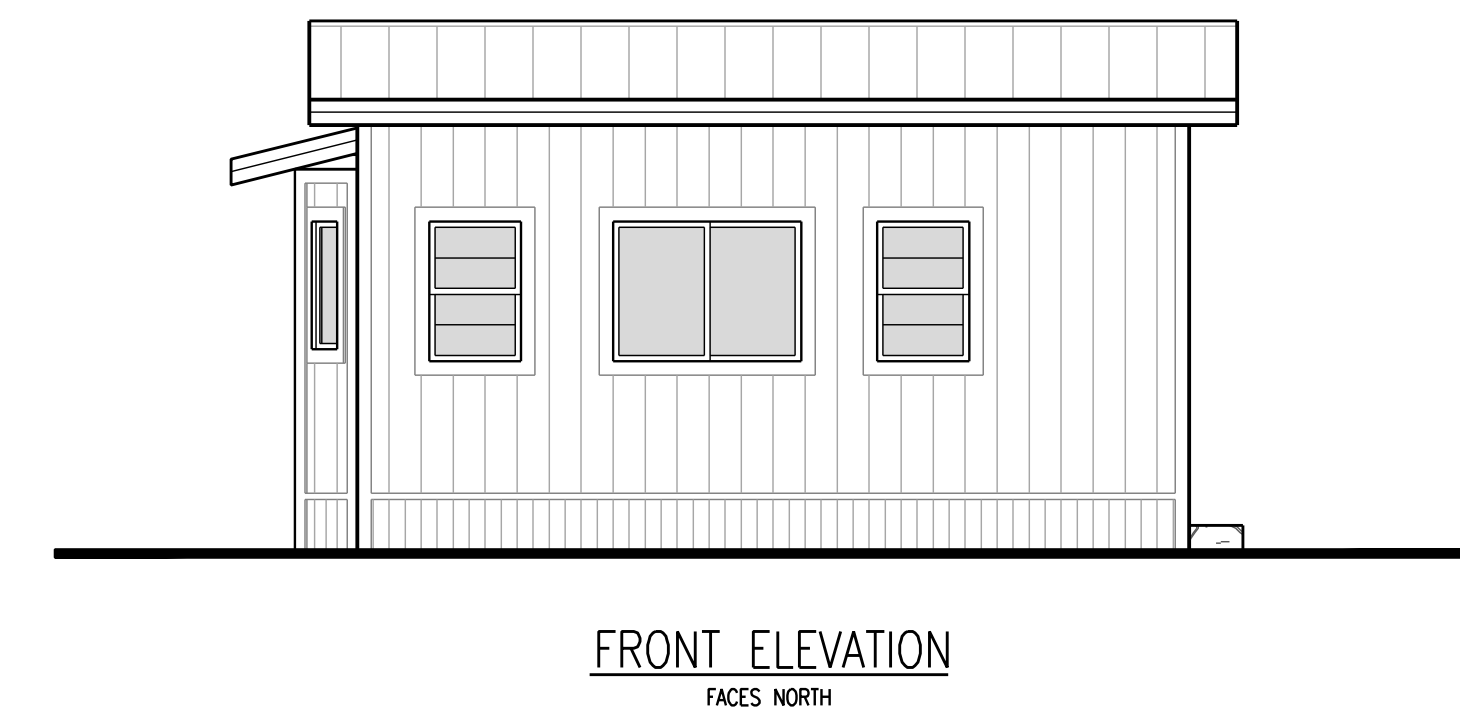
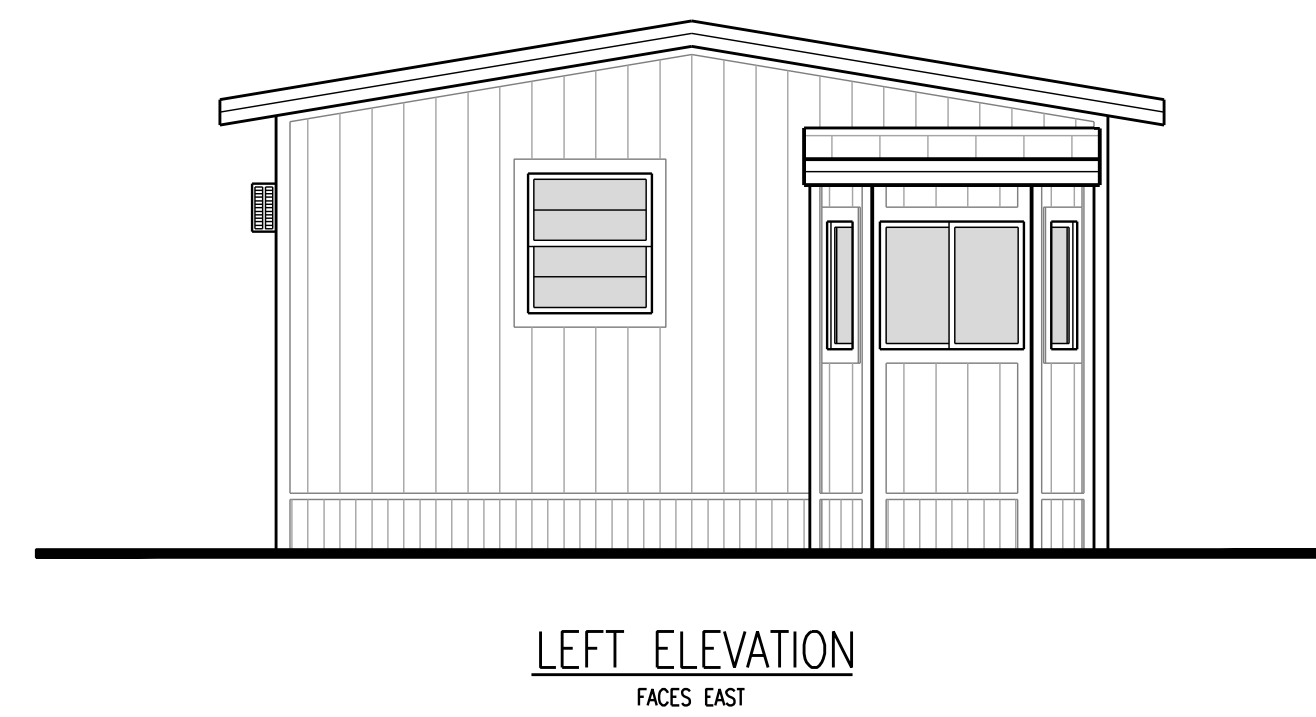
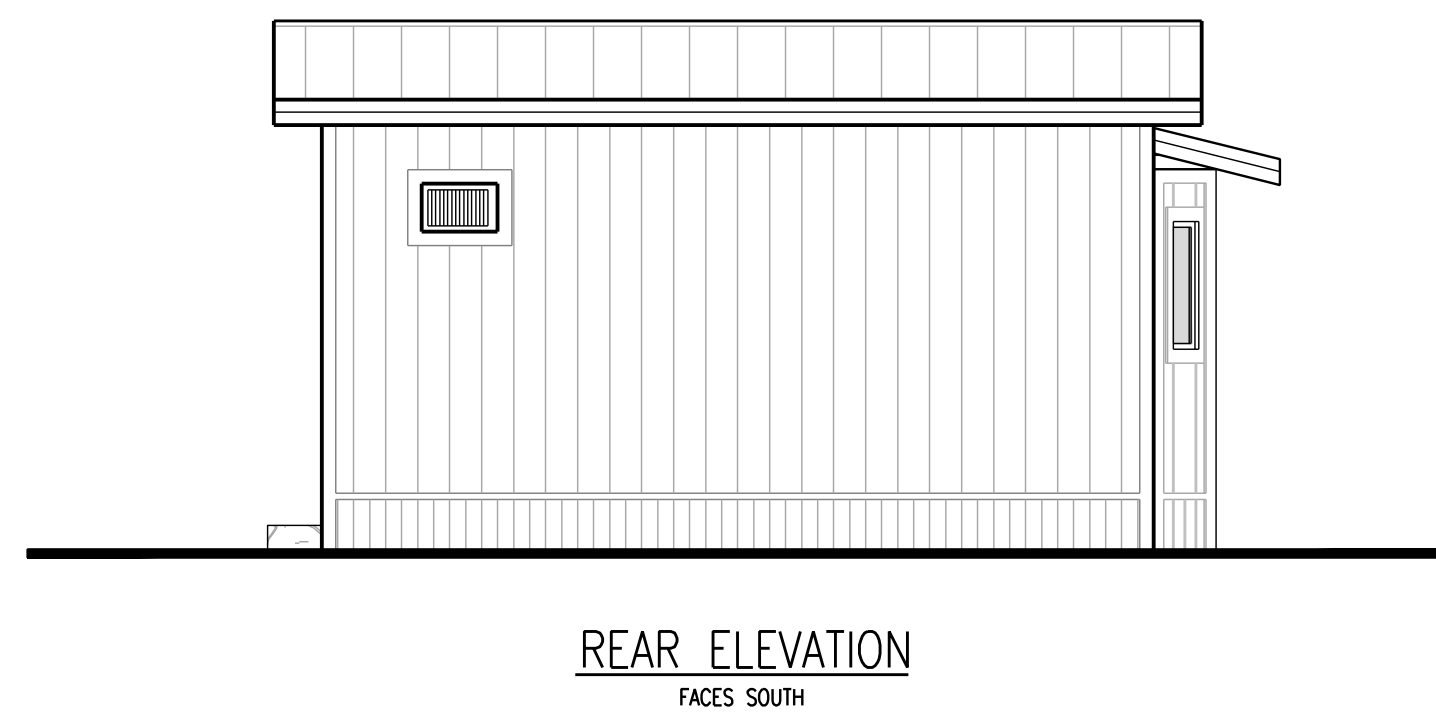
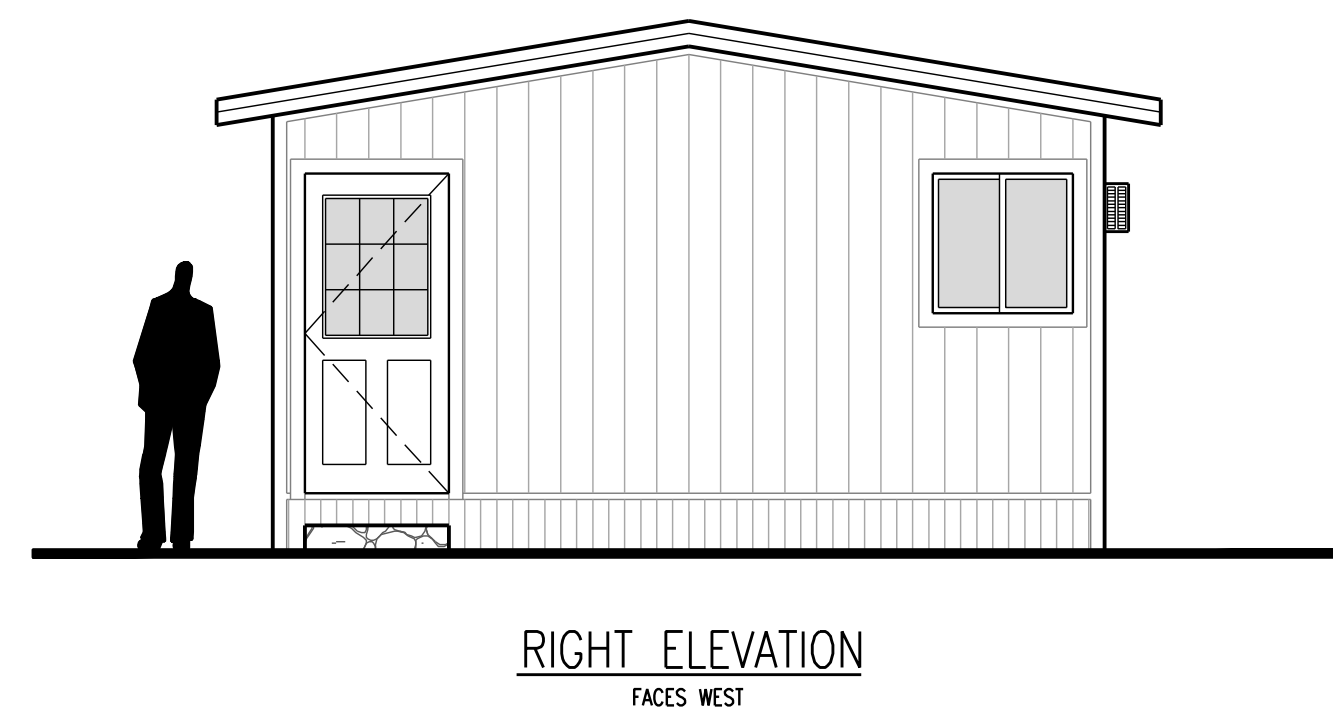
EXISTING OUT-BUILDING 3

SCALE : 1/4" = 1'-0"



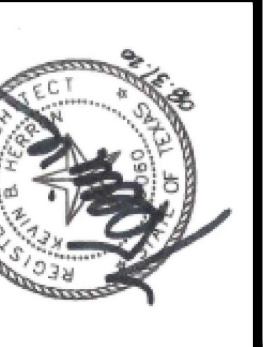
EXISTING OUT-BUILDING 2

SCALE : 1/4" = 1'-0"



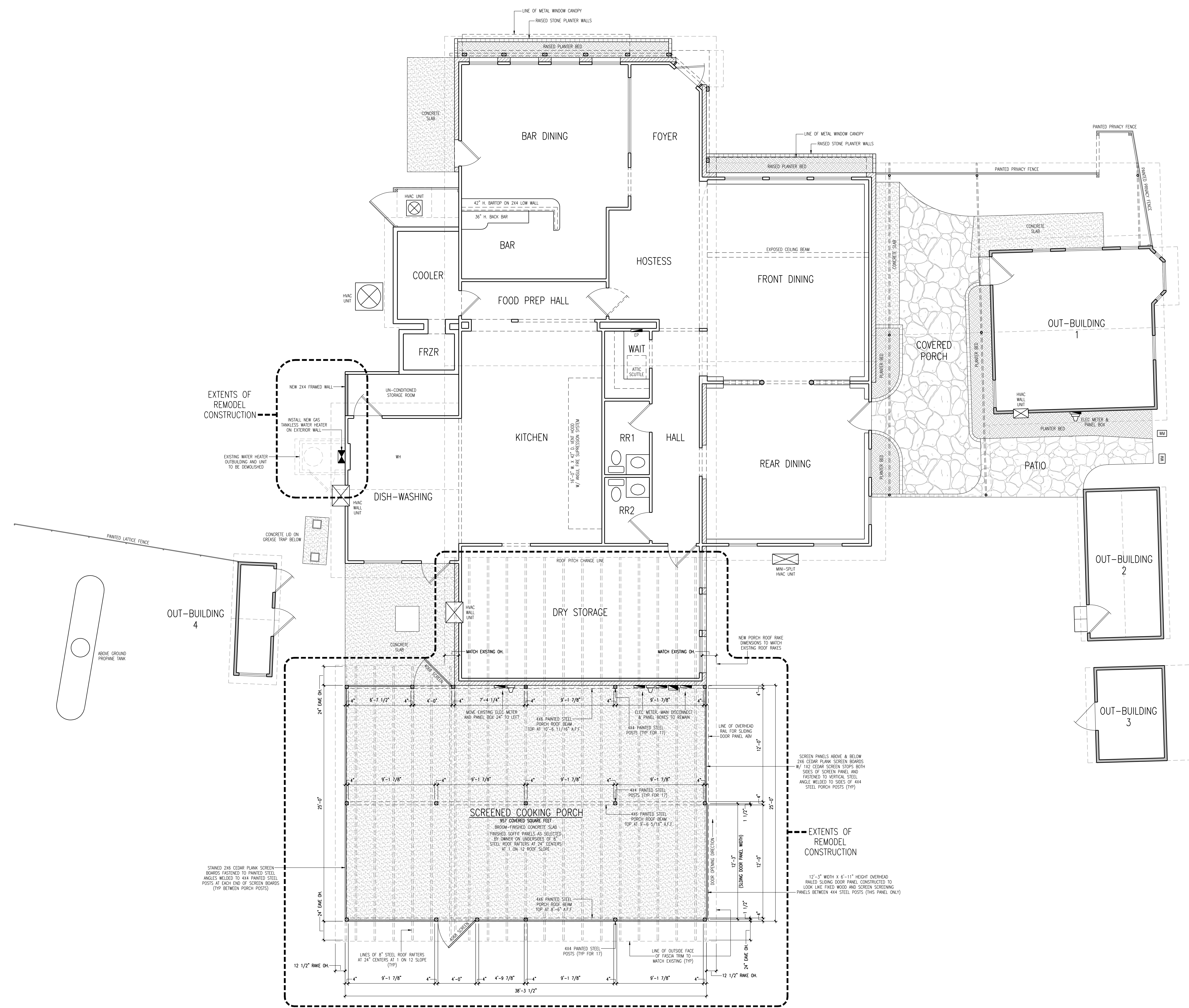
EXISTING OUT-BUILDING 1

SCALE : 1/4" = 1'-0"



REVISIONS

SQUARE FOOTAGES	
MAIN BLDG. HEATED AREA	2738 SQ. FT.
MAIN BLDG. WH CLOS. & STORAGE AREAS	71 SQ. FT.
MAIN BLDG. FRONT COVERED PORCH	12 SQ. FT.
COVERED PORCH AREA	540 SQ. FT.
OUTBLDG. 1 HEATED AREA	306 SQ. FT.
OUTBLDG. 2 COVERED AREA	130 SQ. FT.
OUTBLDG. 3 COVERED AREA	76 SQ. FT.
OUTBLDG. 4 COVERED AREA	49 SQ. FT.
TOTAL PROJECT COVERED AREA	3922 SQ. FT.



REMODEL FLOOR PLAN  
SCALE: 1/4" = 1'-0"

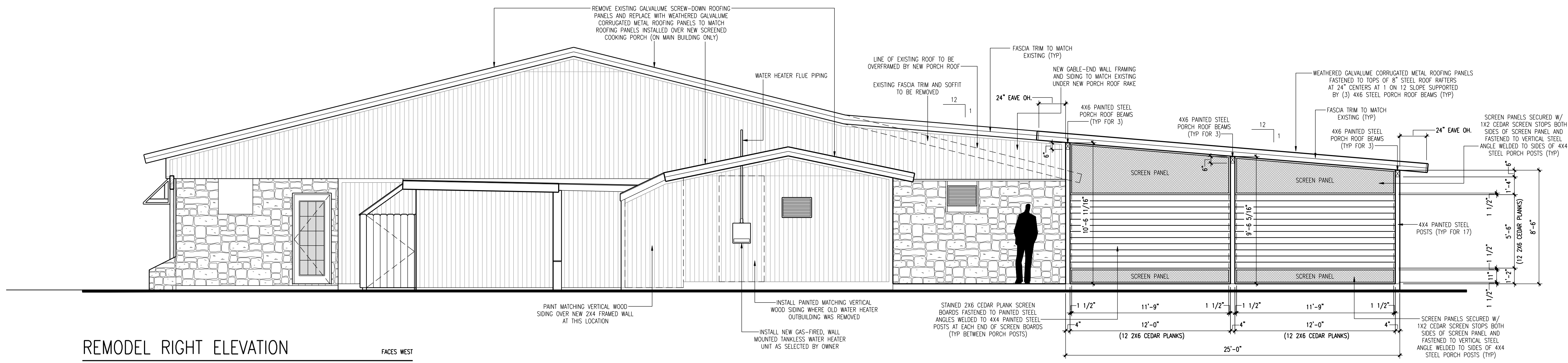
A Restaurant Remodel for CP 290 LLC & Pig Pen BBQ  
301 U.S. Highway 290 West  
Dripping Springs, Texas 78620



**Hennon Design Studio**  
a r c h i t e c t u r e  
101 Hays Street, Suite 409  
Dripping Springs, Texas 78620  
512.856.9899

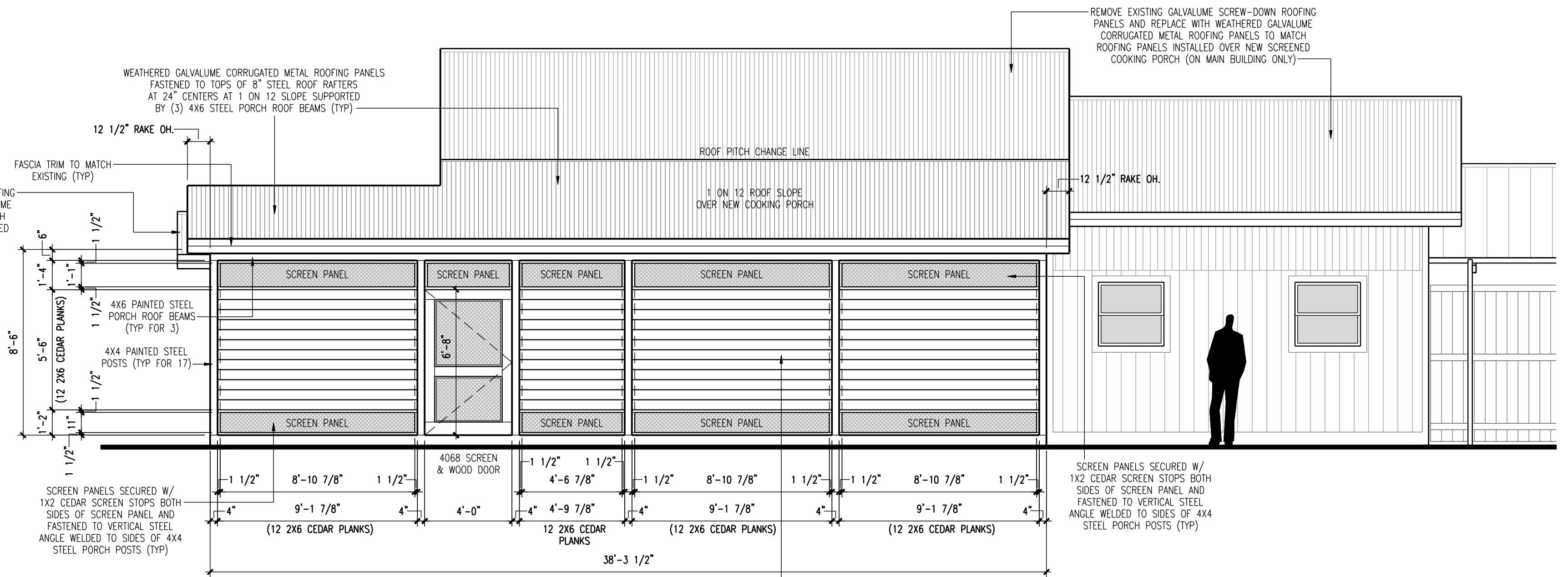
REVISIONS





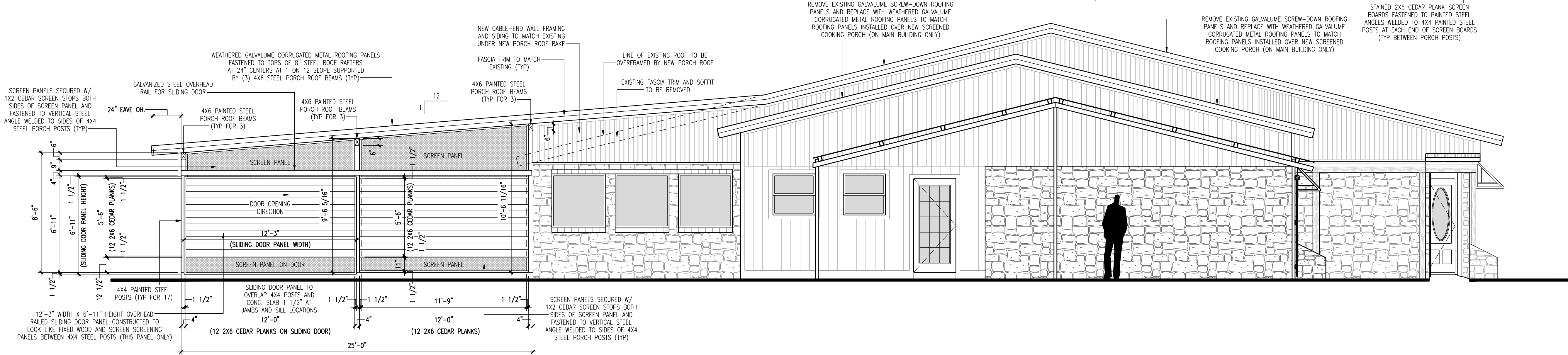
REMODEL RIGHT ELEVATION

FACES WEST  
SCALE: 1/4" = 1'-0"



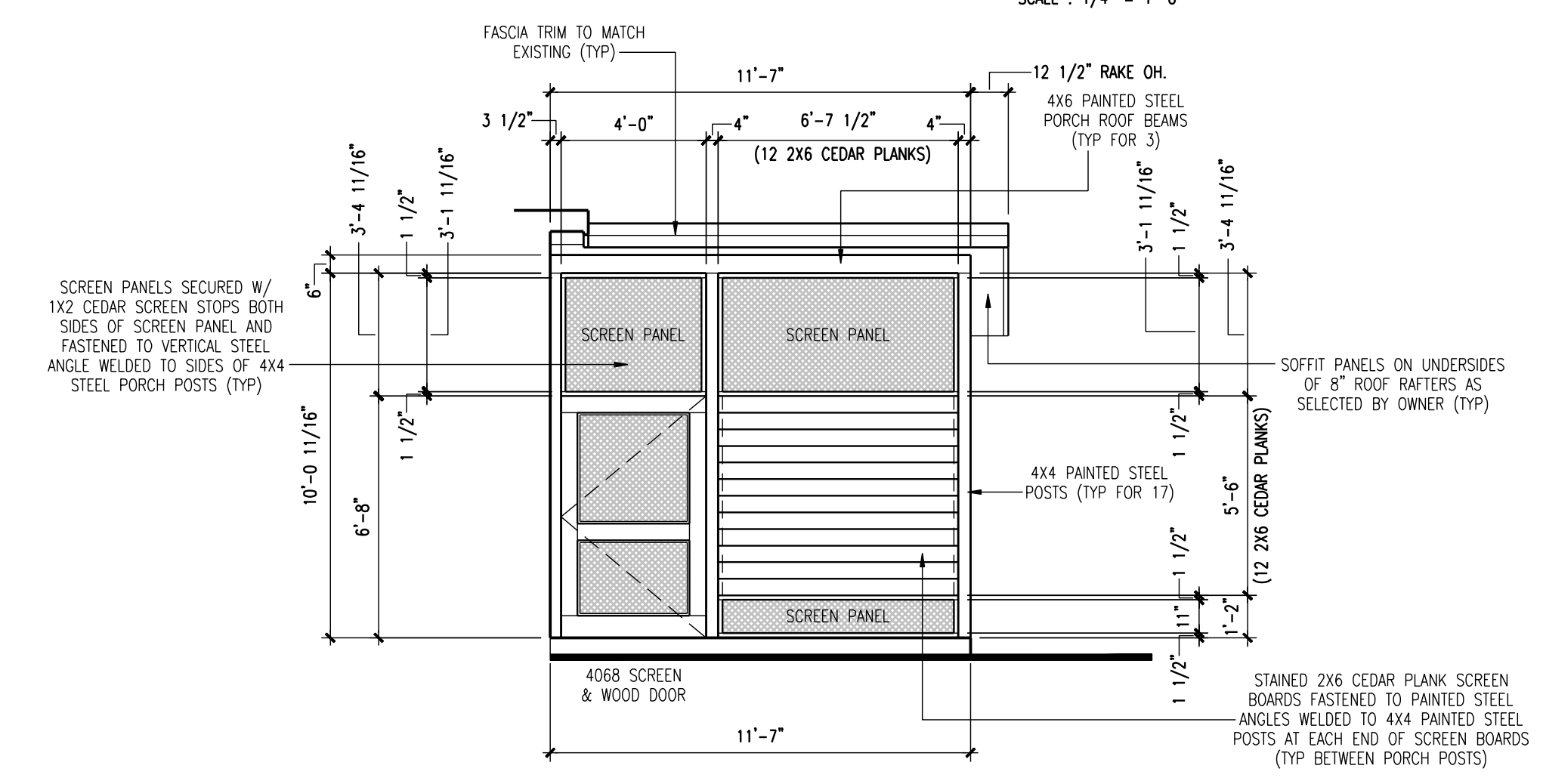
REMODEL REAR ELEVATION

FACES SOUTH  
SCALE: 1/4" = 1'-0"



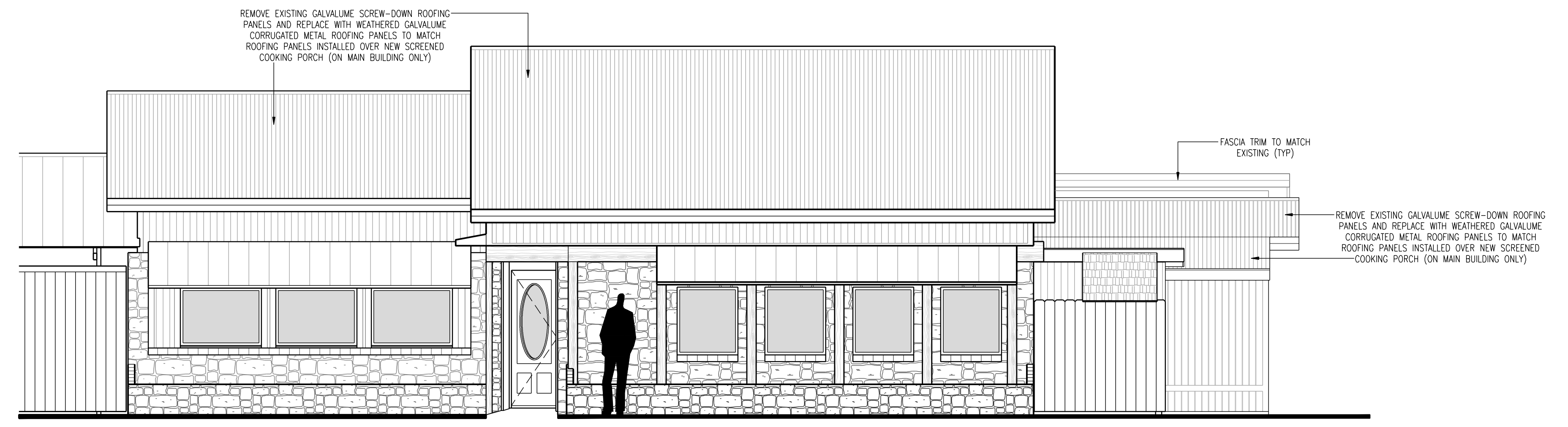
REMODEL LEFT ELEVATION

FACES EAST  
SCALE: 1/4" = 1'-0"



SCREENED COOKING PORCH FRONT ELEVATION

FACES NORTH  
SCALE: 1/4" = 1'-0"



REMODEL FRONT ELEVATION

FACES NORTH  
SCALE: 1/4" = 1'-0"

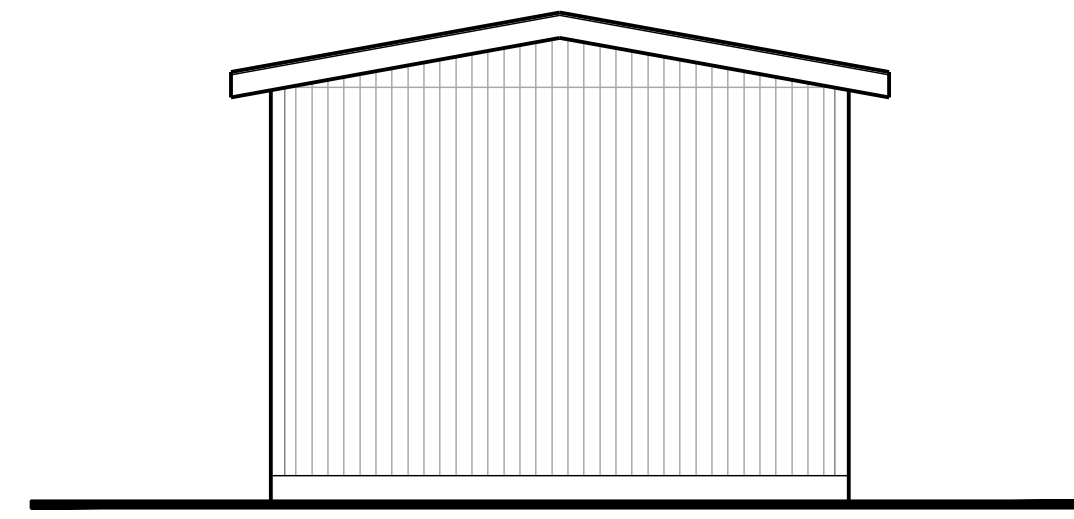
A Restaurant Remodel for CP 290 LLC & Pig Pen BBQ  
301 U.S. Highway 290 West  
Dripping Springs, Texas 78620



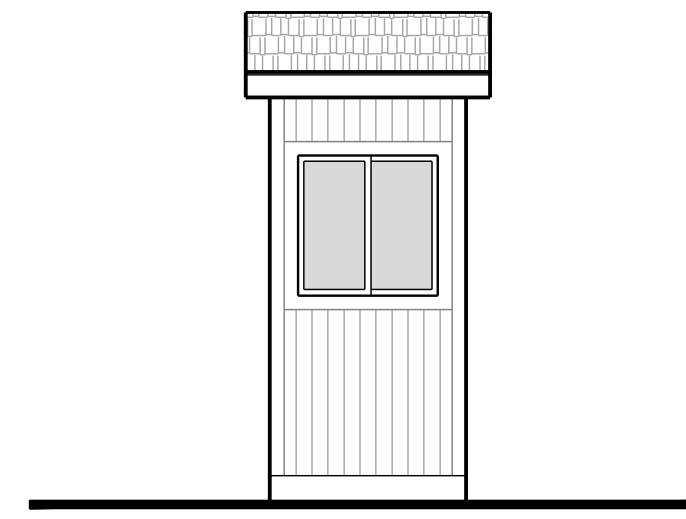
Hennon Design Studio  
architects  
101 Hays Street, Suite 409  
Dripping Springs, Texas 78620  
512.856.9899

REVISIONS

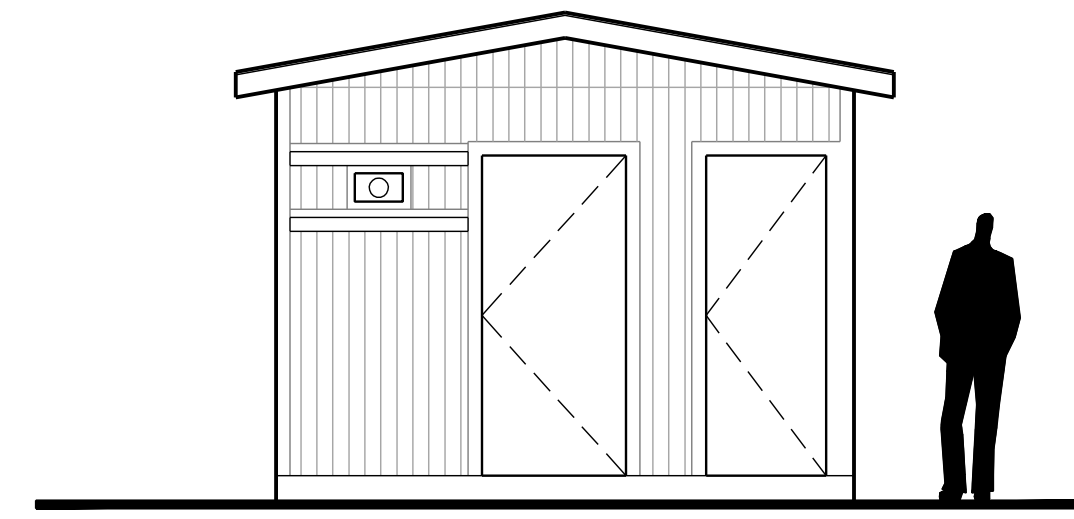
CRE2016  
AUG. 31, 2020  
**A5**



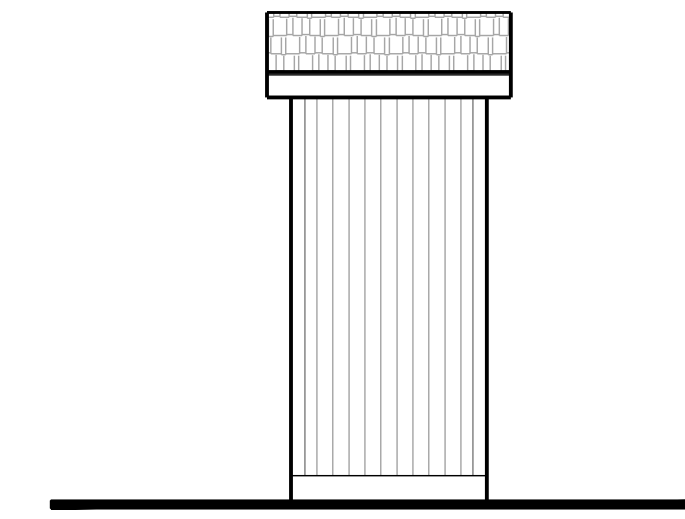
RIGHT ELEVATION  
FACES WEST



REAR ELEVATION  
FACES SOUTH



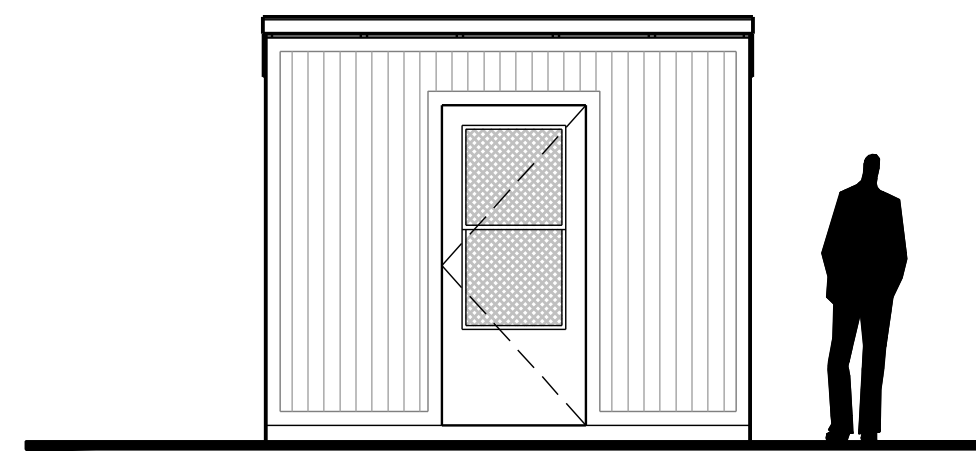
LEFT ELEVATION  
FACES EAST



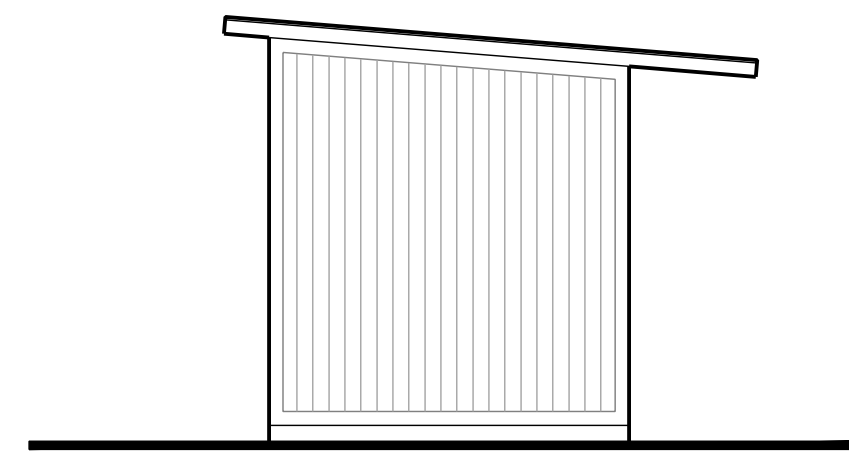
FRONT ELEVATION  
FACES NORTH

REMODEL OUT-BUILDING 4

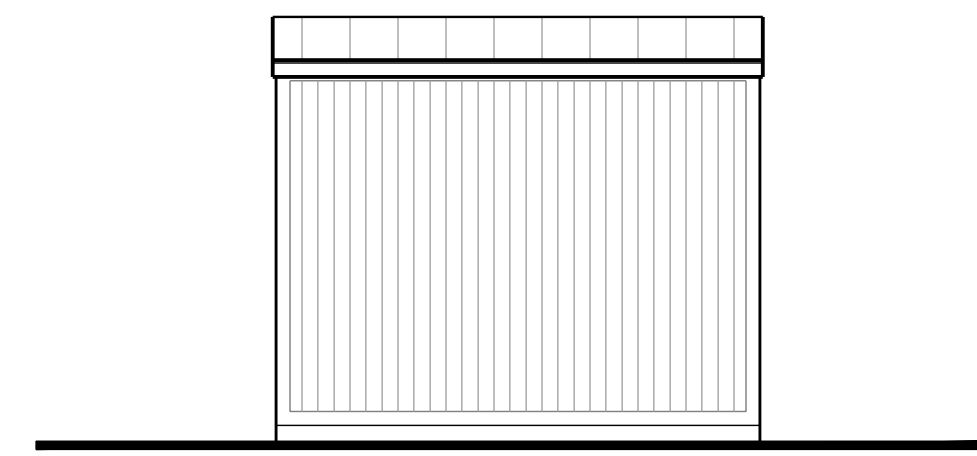
SCALE : 1/4" = 1'-0"



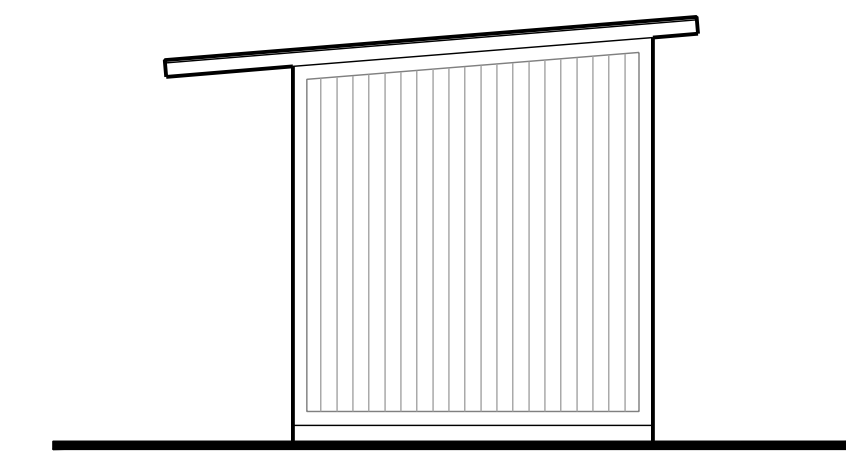
RIGHT ELEVATION  
FACES WEST



REAR ELEVATION  
FACES SOUTH



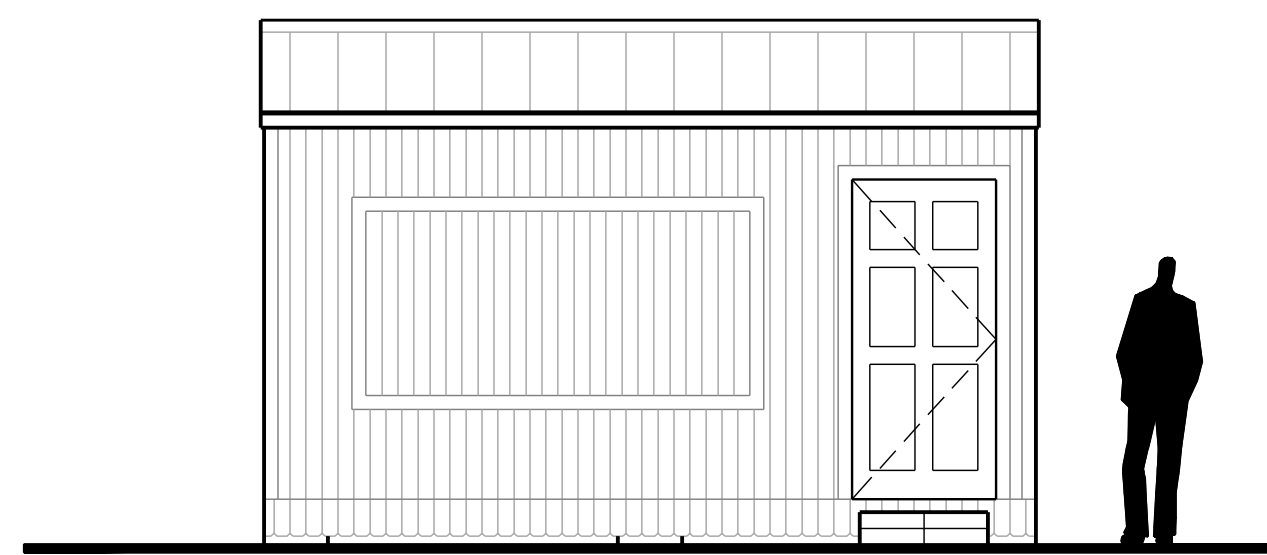
LEFT ELEVATION  
FACES EAST



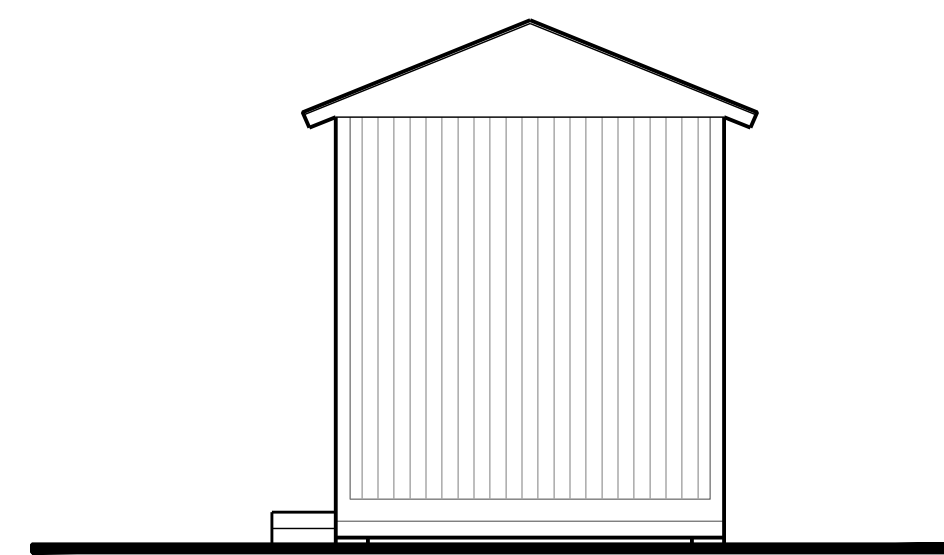
FRONT ELEVATION  
FACES NORTH

REMODEL OUT-BUILDING 3

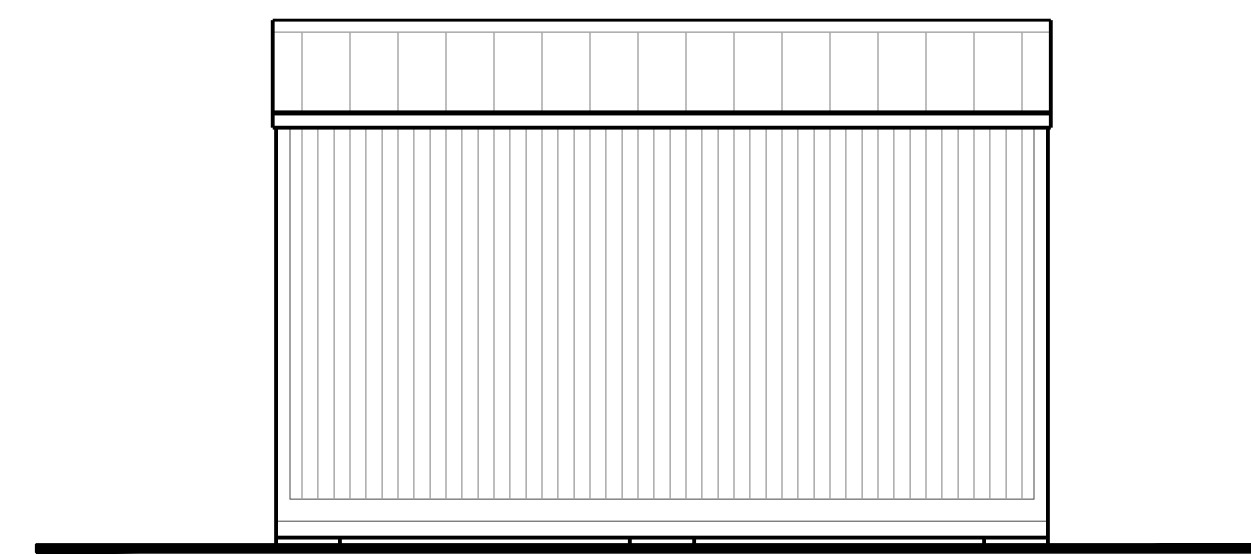
SCALE : 1/4" = 1'-0"



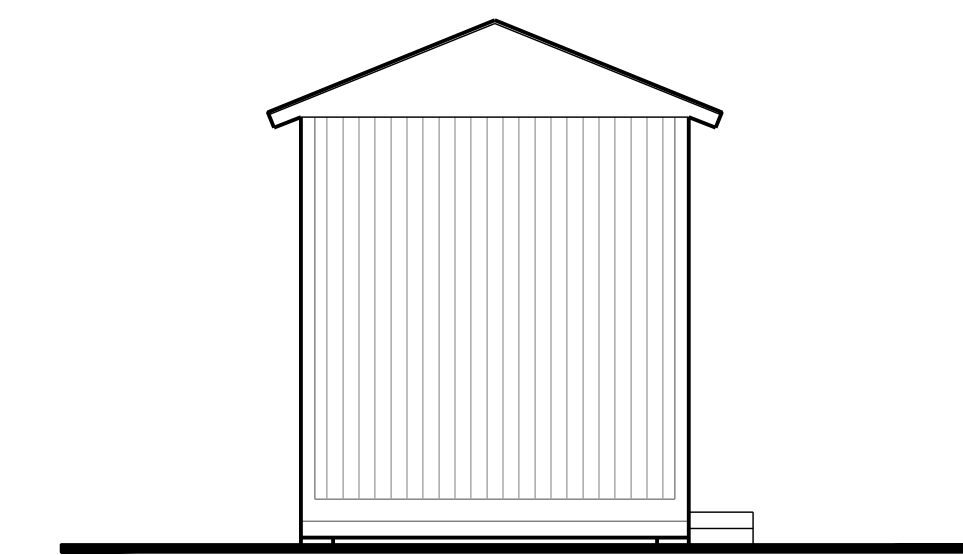
RIGHT ELEVATION  
FACES WEST



REAR ELEVATION  
FACES SOUTH



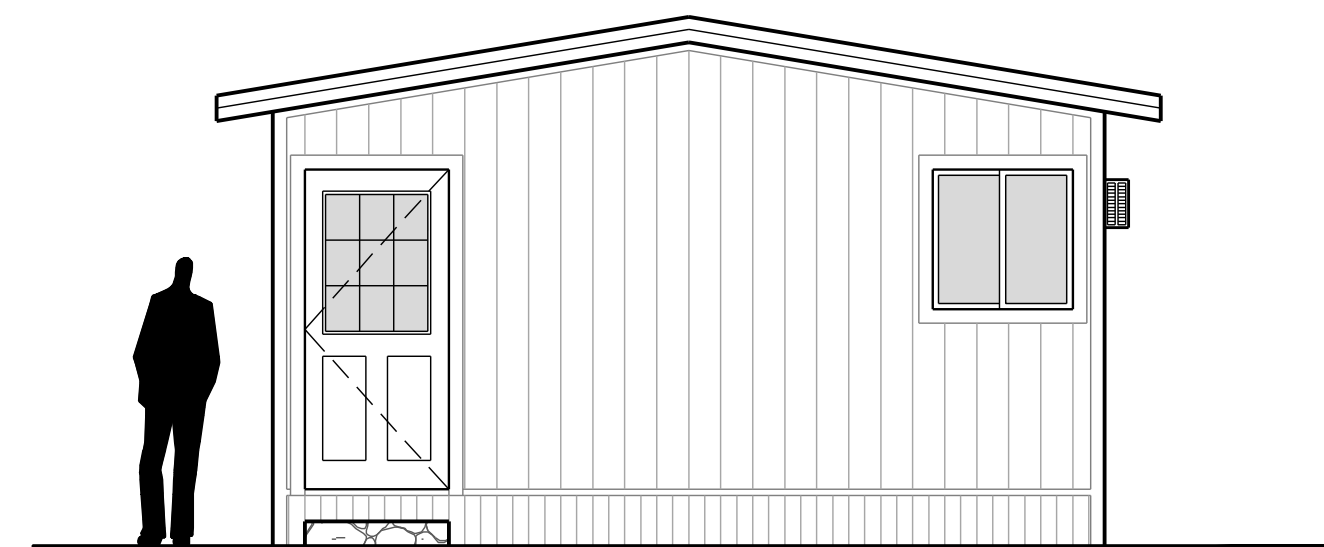
LEFT ELEVATION  
FACES EAST



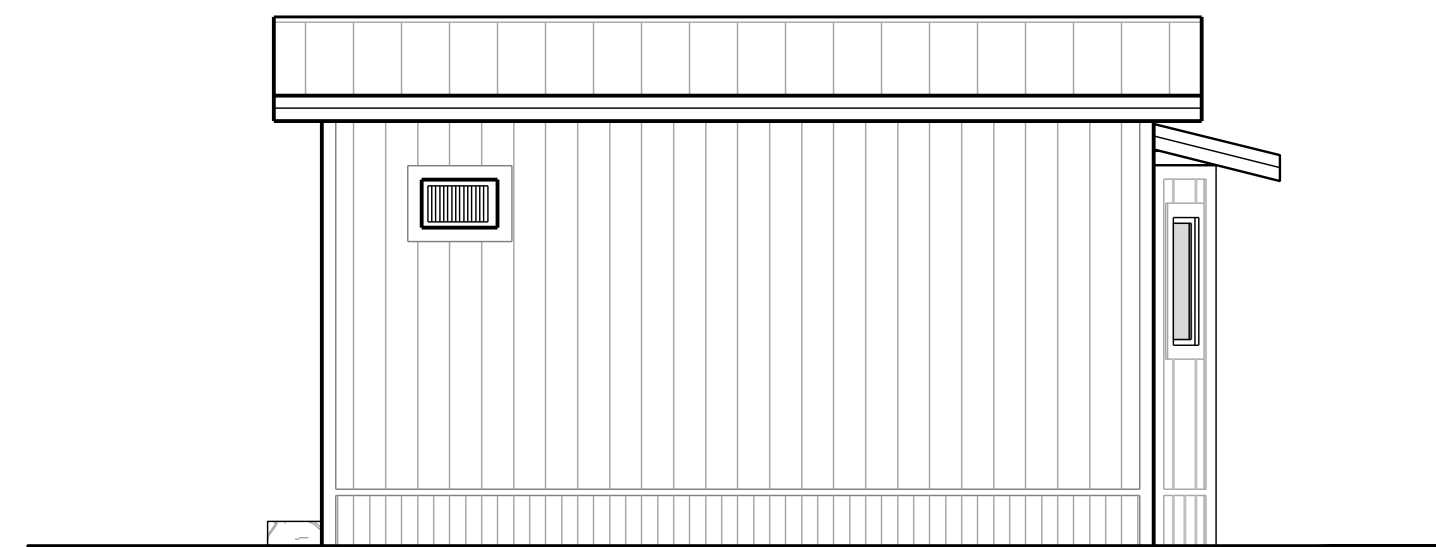
FRONT ELEVATION  
FACES NORTH

REMODEL OUT-BUILDING 2

SCALE : 1/4" = 1'-0"



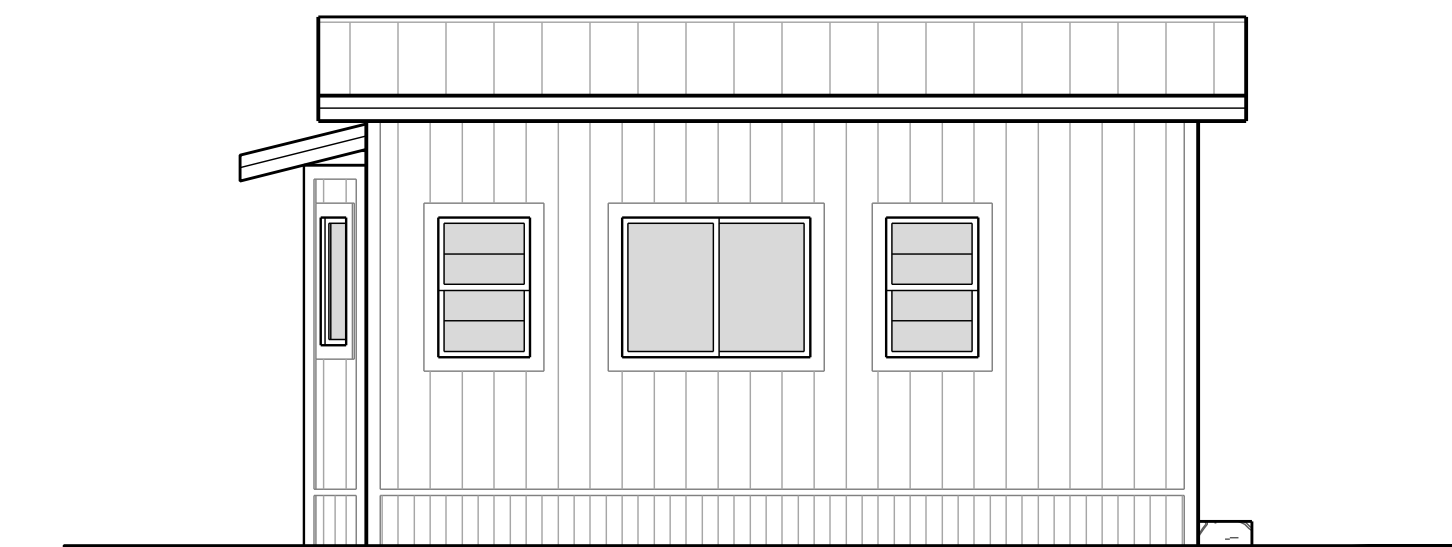
RIGHT ELEVATION  
FACES WEST



REAR ELEVATION  
FACES SOUTH



LEFT ELEVATION  
FACES EAST

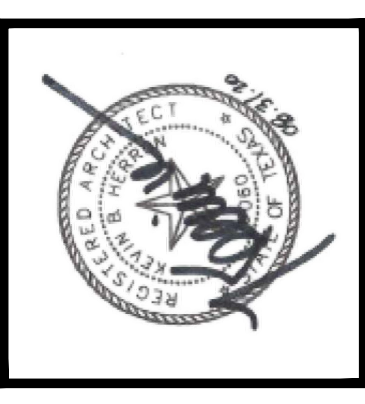


FRONT ELEVATION  
FACES NORTH

REMODEL OUT-BUILDING 1

SCALE : 1/4" = 1'-0"

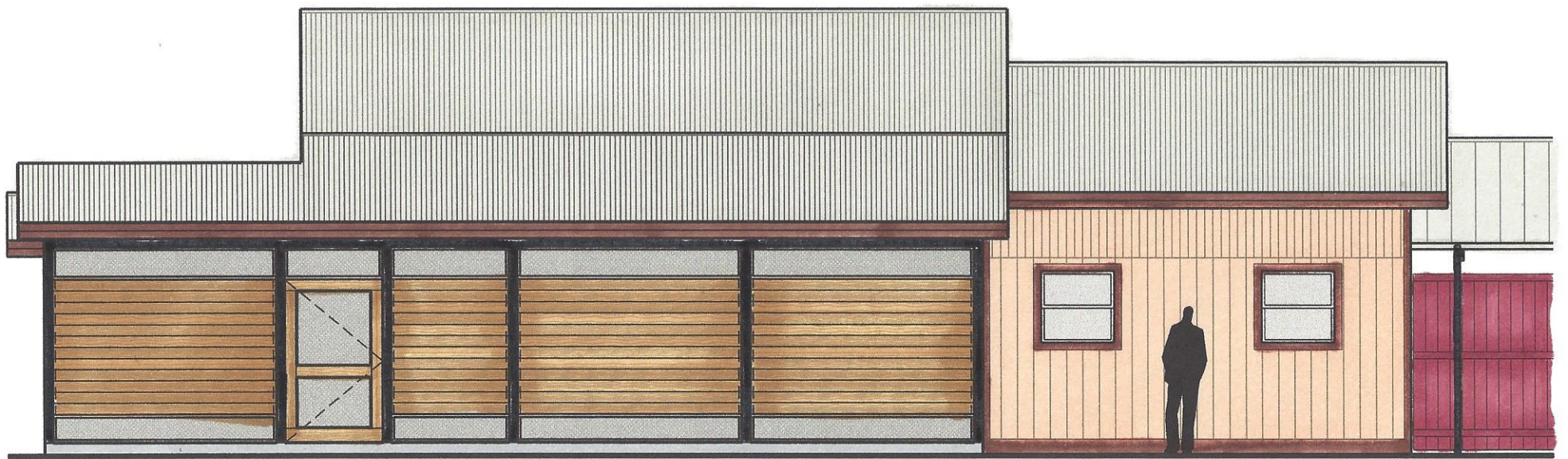
A Restaurant Remodel for CP 290 LLC & Pig Pen BBQ  
301 U.S. Highway 290 West  
Dripping Springs, Texas 78620



Hennon Design Studio  
architectural  
101 Hays Street, Suite 409  
Dripping Springs, Texas 78620  
512.856.9889

REVISIONS

CRE2016  
AUG. 31, 2020  
**A6**



REMODEL REAR ELEVATION

FACES SOUTH

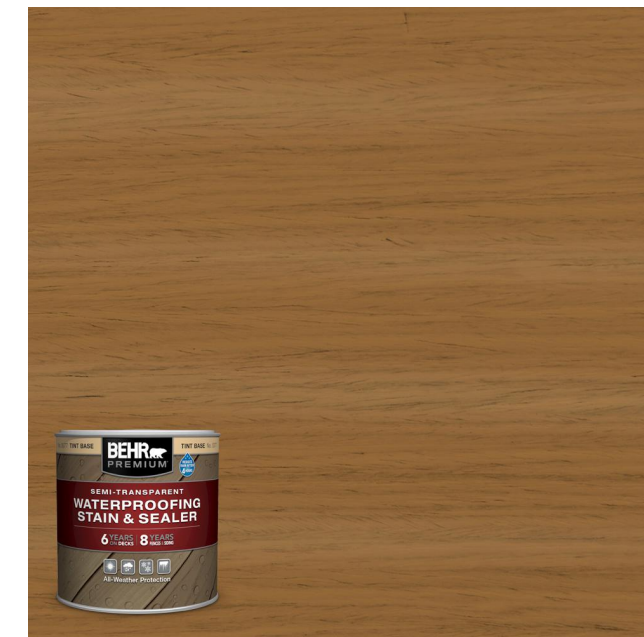
## Exterior Materials & Colors



Black Paint for Screened Cooking  
Porch Steel Posts, Beams & Rafters



Stained 2X6 S4S Cedar Plank Screen Panels  
installed between 4X4 Steel Porch Posts  
and 4X6 Steel Porch Beams  
(All Steel to be painted Black)



Wood Stain for Cedar Plank Screen  
Panels, Screen Door & Screen  
Panel Frames



48" wide x 80" tall Stained  
Cedar Screen Door

**An Restaurant Remodel for  
CP 290 LLC & Pig Pen BBQ  
Phase 1 - Screened Cooking Porch  
301 U.S. Highway 290 West  
Dripping Springs, Texas 78620**

**Herron Design Studio, architecture  
101 Hays Street, Suite 409  
Dripping Springs, Texas 78620  
512.858.9889**



Pre-weathered Galvalume Corrugated  
Metal Roofing Panels on New Screened  
Cooking Porch and to be installed on  
Roof of Main Building